



*"Building A Greener Tomorrow!"*

## ECHO ELIMINATOR™ Bonded Acoustical Cotton



**Bonded Acoustical Cotton (B.A.C.) The Most Cost Effective Acoustical Absorbing Material On The Market**

Echo Eliminator is a high performance acoustical material made from recycled cotton. This product is ideal for noise control applications. Echo Eliminator can be used as an acoustic wall panel or hanging baffle. Common applications are school gyms, classrooms, lunch rooms and any application where a high performance noise control product is needed. Echo Eliminator is eligible for LEED™ credits, Class A fire rated and 100% recyclable.

### Product Features:

- Recycled Cotton (Green Acoustical Material)
- Class A – Non-Flammable (Per ASTM E-84)
- May Contribute Toward LEED Credits
- Lightweight
- Easy to Install (Adhesively Applied)
- Impact Resistant ■ Durable
- Low Cost ■ High Light Reflectance
- High Performance Acoustical Absorption
- Relocatable (with Grommets)

**MATERIAL:** Bonded Acoustical Cotton. Recyclable, Fiberglass Free, Recycled Cotton Material

**PATTERN:** Soft Textured Surface

**FEATURES:** Economical, multi-purpose, high performance, durable, lightweight, impact resistant

**COM. SIZES:** Standard Size: 2' x 4'. Also available in 12" x 12", 2' x 2', 4' x 4' and 4' x 8'. (minimum quantities may apply, please call for details). (1" thickness panels available in #3 lb. or #6 lb. per cubic foot, 2" thick panels available in #3 lb. density only.)

**COLOR:** Black, Navy Blue, Light Grey, Graphite, Pure Blue, White, Burgundy, Marble Light Blue, Hunter Green. Beige

**Flammability:** ASTM E-84, Flame Spread: 5. Smoke Developed: 35.

### ASTM E-84 CLASS A FIRE RETARDANT



Echo Eliminator™ Acoustical Cotton is fire retardant, fungi, mold & mildew resistant and has been tested for numerous acoustical and thermal insulating properties including the following ASTM specification and test methods:

E84, C665, C518, E96, E970, C423-98, E97-97, E413-87, E492-90, E989-89; C739-97 Sec. 9, 11, 13, 15; CA. Lic. #TI-1367 Reg. #CA-T367AZ



Also Available –  
Echo Eliminator,  
Soundwave Eggcrate  
Acoustical Panel

### Typical Applications:

Bonded Acoustical Cotton panels are ideally suited for ■ gymnasiums ■ auditoriums ■ classrooms ■ music rooms ■ arenas & stadiums ■ churches ■ offices ■ computer rooms ■ restaurants/cafeterias ■ residential ■ concert halls & theaters ■ pro audio ■ gun ranges ■ manufacturing plants ■ machine enclosures ■ water treatment plants ■ multi-purpose rooms ■ community centers and more.

Echo Eliminator PANEL: Sound Absorption Coefficients	Mount	125Hz	250Hz	500Hz	1KHz	2KHz	4KHz	NRC
1" 3 lb./cf.	A	.08	.31	.79	1.01	1.00	.99	.80
2" 3 lb./cf.	A	.35	.94	1.32	1.22	1.06	1.03	1.15
1" 6 lb./cf.	A	.07	.30	.86	1.10	1.05	1.03	.85

Echo Eliminator BAFFLE: Sabins/Baffle	Avg.	125Hz	250Hz	500Hz	1KHz	2KHz	4KHz	Sabins/Avg.
1" x 2' x 4'	2.43	4.93	8.43	12.35	15.57	16.73	10.30	
2" x 2' x 4'	2.40	6.55	12.86	17.46	18.49	16.77	13.85	





*"Building A Greener Tomorrow!"*

## ULTRATOUCH™ Demi Insulation



### Safe For You & The Environment

UltraTouch™ Denim Insulation is the successful combination of 35 years of insulation experience and a revolutionary patented manufacturing process that has created a superior and safe product.

UltraTouch is made from high quality natural fibers. These fibers contain inherent qualities that provide for extremely effective sound absorption and maximum thermal performance. UltraTouch DOES NOT ITCH and is very easy to handle and work with. UltraTouch contains no chemical irritants and requires no warning labels compared to other traditional products. There are no VOC concerns when using UltraTouch, as it is safe for you and the environment.

UltraTouch is also a Class-A Building Product and meets the highest ASTM testing standards for fire and smoke ratings, fungi resistance and corrosiveness.

UltraTouch™ Denim Insulation contains 80% post-consumer recycled natural fibers making it an ideal choice for anyone looking to use a high quality sustainable building material.

By installing UltraTouch, you are making both your building and the environment a safer place to live, work, and enjoy.

### Product Features:

- Does Not Itch and Is Easy To Handle
- No Chemical Irritants
- 80% Post-Consumer Recycled Denim
- Provides Maximum R-Value Performance
- Offers a High NRC Value to Reduce Noise
- Mold and Mildew Resistant
- Class A – Non-Flammable (Per ASTM E-84)
- May Contribute Toward LEED Credits
- Requires no carcinogenic warning labels compared to other traditional insulation products
- Contains no harmful airborne particulates
- Passed the extremely stringent Environmental Specification 1350 Indoor Air Pollutant testing used for California Public Schools
- Extremely high Noise Reduction Coefficient to effectively reduce airborne sound transmission including traffic, airplanes, radios, television, and conversation

UltraTouch Insulation – Ultrasonic Sound Absorption – ASTM C423							
Frequency	125Hz	250Hz	500Hz	1KHz	2KHz	4KHz	NRC
3"	0.95	1.30	1.19	1.08	1.02	1.00	<b>1.15</b>
5"	0.97	1.37	1.23	1.05	1.00	1.01	<b>1.15</b>



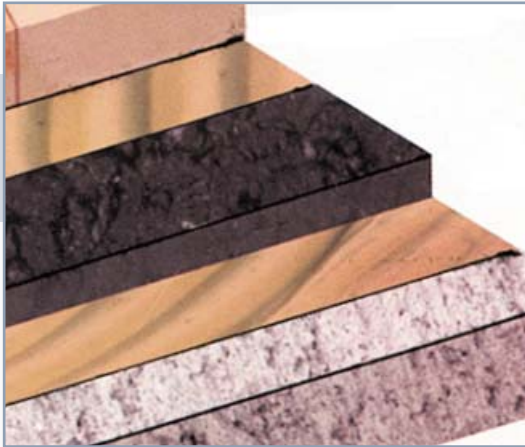
### Class A Material



SGS U.S. Testing Company Inc.  
 ASTM E-84, Flame Spread Index  
 Flame Spread Index = 5  
 Smoked Developed Value = 35

### Environmentally Friendly:

- UltraTouch consists almost entirely of natural denim and cotton fibers that are 100% recyclable, reducing landfill waste. The denim and cotton are also 80% post-consumer.
- UltraTouch requires a minimal amount of energy to manufacture aiding the environment with energy conservation and reduction in pollution compared to other types of traditional insulation.



*"Building A Greener Tomorrow!"*

**ACOUSTIK™**  
Acoustic Subflooring



**Acoustik™**  
acoustic subflooring

**Soundproof Your Floors with An Innovative Product Made from 100% Recycled Rubber**

Acoustik™ subflooring is made from 100% recycled tires. Ideal under wood, ceramic or marble floors. It provides better resistance to impact noise and enhances the floors acoustic performance.

Acoustik™ has been tested by renowned acousticians and/or architects specializing in acoustics.

This high-quality product is suitable for all types of structures and floor coverings.

**MATERIAL:** Recycled Rubber

**PATTERN:** Flat

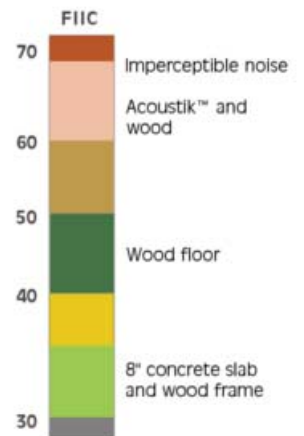
**THICKNESS:** 3/8"

**ROLL SIZE:** 4' x 25' – Sold in Full Rolls

**COLOR:** Black

**FLAMMABILITY** ASTM E-84: Flame Spread – 83;  
Smoke Developed – 315

**INSTALLATION:** Adhesive Poly 300 or DA5



**Product Features:**

- High Performance Noise Control
- Recycled Rubber Materials
- May Contribute Toward LEED Credits
- Cost Effective
- Dampens Vibrations
- Provides High Thermal Insulation
- Fully Waterproof, 100% Vapor Barrier
- Easy to Install and Work With

**Typical Applications:**

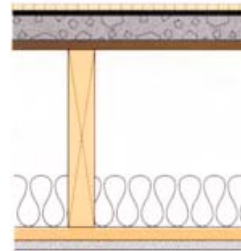
Effective impact noise control and soundproofing. For use as a subfloor in new and renovation construction projects. Reduces impact noise and vibrations while reducing airborne sound transmission. Great under hardwood, ceramic or carpet.

**FIC 62**



- COMPOSITION:**
- Wood Floor Adhesive
  - 8-mm (5/16") Acoustik Membrane
  - Adhesive
  - Concrete slab (8")

**FIC 61**

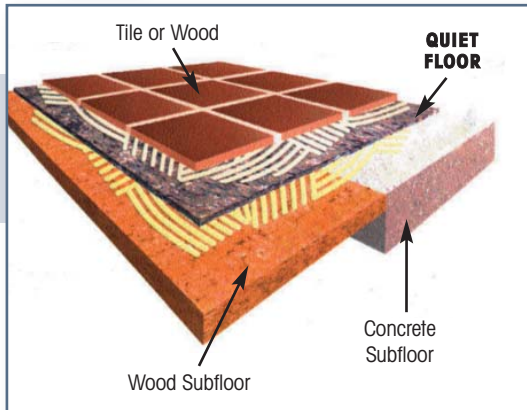


**COMPOSITION:**

- Wood Floor
- Adhesive
- 8-mm (5/16") Acoustik Membrane Adhesive
- 38-mm Concrete Slab
- 11.1-mm (7/16") Particleboard
- 38 x 235-mm (2" x 10") Floor Joist
- RSI 1.470-mm (2-3/4") Sound Insulation



*"Building A Greener Tomorrow!"*



## QUIET FLOOR™ Acoustic Underlay

### Impact Reduction Pad for Floors

Impact noise through floors to occupied spaces below and the "click" or hollow sound occurring within a space from foot traffic is a common problem. Apply Quiet Floor™ 1/8" acoustic underlayment under laminate, wood or ceramic floors to improve soundproofing. Quiet Floor™ also reduces squeaks, provides thermal insulation and a moisture barrier. It absorbs over 5 times its own weight of water without swelling. Quiet Floor™ outperforms 1/8" cork underlayment and 40% thicker rubber pad in a majority of test band frequencies.

#### Product Features:

- Economical
- Recycled "Green" Product
- May Contribute Toward LEED Credits
- Easy to Install
- Lightweight – Smooths Minor Floor Imperfections
- **STC up to 52, IIC up to 58**

#### Typical Applications:

Flooring underlay to reduce impact floor noise in commercial and residential construction.

**MATERIAL:** 100% Pre-consumer Recycled Synthetic Fiber

**FEATURES:** Lightweight – Smooths Minor Floor Imperfection

**THICKNESS:** 1/8"

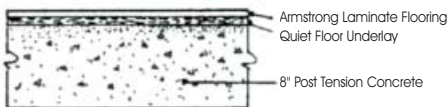
**SIZES:** 3' x 33-1/3' & 61" x 60' Rolls

**WEIGHT:** 2.22 oz/sf

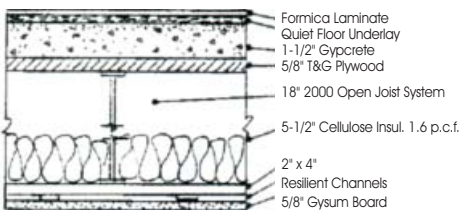
**DENSITY:** 13.3 lbs/cub. ft.

**FLAMMABILITY:** Meets Federal Flammability Standard CPSC-FFI-70 (Pill Test)

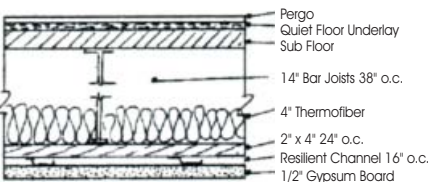
**INSTALLATION:** Noise S.T.O.P.™ Acoustical Adhesive



FFIC 60  
FFIC 39 20" Porcelain Tile



STC 52 STC 53 IIC 52 2" x 12" Ceramic Glazed Tile



FFIC 58

Quiet Floor™ – Impact Insulation Class per ASTM E-492-92 (Impact)							
	125Hz	250Hz	500Hz	1KHz	2KHz	4KHz	IIC
Quiet Floor	58	56	44	30	20	18	<b>58</b>

Quiet Floor™ – Sound Transmission Class per ASTM E-90-97 (Airborne)							
	125Hz	250Hz	500Hz	1KHz	2KHz	4KHz	STC
Quiet Floor	35	40	54	63	70	71	<b>52</b>



*"Building A Greener Tomorrow!"*

## CLIMATE SEAL™ Thermal, Acoustic, Preservation Window Inserts



THE WORLD'S BEST THERMAL, ACOUSTIC, PRESERVATION WINDOW INSERTS

### Product Features:

- Strong, yet Lightweight
- Unique "Bellows" Creates Tight Fit
- Keeps In Heat During Winter and Out During Summer – Energy Cost Savings
- Half the Weight of Glass Competitors, Which can Make Removal Very Dangerous with Their System

Problem windows can be found in about 80% of American homes and businesses. The solution is Climate Seal™ – which protects against:

- Cold/Heat ■ Infiltration Noise ■ Condensation
- High Utility Bills ■ Dust and Pollen



**Two Installation Location Options:**  
*Surface Mount* – Over The Existing Window Cavity or  
*In-Jamb Mount* – Within The Existing Window Cavity

**Climate Seal™ is Unquestionably the Most Effective Interior Insulating Window System on the Market**

### THERMAL SERIES:

Relief from high fuel prices is here...just in the nick of time! Actually, the Climate Seal™ Thermal Series window insert has been slashing heating and cooling costs for its customers for over 30 years.

Our acrylic glazing is clear and guaranteed against yellowing & clouding for 10 years. It is light in weight, yet, 17 times more impact resistant than glass of equal thickness, Climate Seal™ inserts are also safer and better insulators than glass.

Our magnetic vinyl extrusion is strong, yet light in weight and a much better insulator than aluminum. It will help prevent condensation and will not deteriorate from the sun's UV rays, as will moldings made from ABS plastic.

The most unique feature of Climate Seal™ window inserts is the "bellows" built into our molding – this allows the acrylic to expand in a flat plane without "bowing" – therefore, the window will not "pop-off" due to sheet edge rotation.

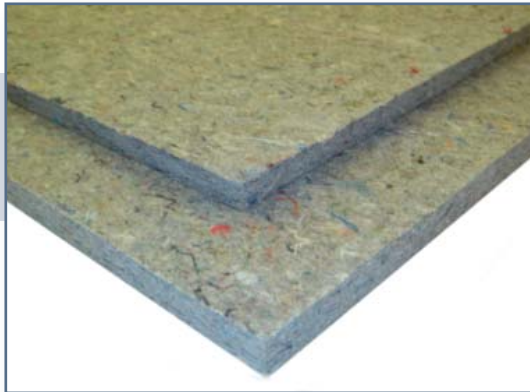
Climate Seal™ is not a storm or prime replacement window. It is a Magnetic Interior Insulating Window that installs within or over the existing window cavity, yet it's performance rivals or exceeds prime replacement windows – for much less cost!

Climate Seal™ covers the existing window, creating a thermal barrier. The Climate Seal™ insert keeps heat in during winter and out during summer. It is made of vinyl and acrylic – superior insulating materials. Vinyl and acrylic will not conduct or lose heat nearly as fast as materials like aluminum and glass.

Climate Seal's™ magnetic seal is virtually airtight. By installing the Climate Seal™ over an existing window, an insulating dead-air space is created. This separates the warm inside air from cold prime window glass. And with our exclusive bellows design that expands or contracts as temperatures change, the seal is maintained and annoying drafts are eliminated. The flexible bellows also adjust for installation of contoured moldings.

Climate Seal Website: [www.climate seal.com](http://www.climate seal.com)





*"Building A Greener Tomorrow!"*

## ACOUSTI-BOARD™ ULTRA Soundproofing Backer

**Certified 100% Pre-consumer Recycled Synthetic Fiber**

**MATERIAL:** Certified 100% Pre-consumer recycled synthetic fiber

**FEATURES:** Can contribute to LEED MRc4.1-4.2 credits

**THICKNESS:** 0.50" (± 2%)

**SIZES:** 2' x 4' or 4' x 8' panels

**WEIGHT:** 4000gm/sq m (120 oz/sq yd)

4' x 8' sheets = approx.25 lbs – 68 sheets/pallet= 1700lbs – 12 pallets/tkld

2' x 4' sheets = approx.6.25 lbs – 272 sheets/pallet= 1700lbs – 24 pallets/tkld

**DENSITY:** 20 lbs/ft<sup>3</sup>

**R-VALUE:** @0.50" thickness = 2.09 hr-ft<sup>2</sup>-°F/Btu (4.19/inch)

**VOLATILE ORGANIC COMPOUNDS:** Certified SCS Indoor Advantage – Gold. Passed Section 01350 VOC test to comply with Collaborative High Performance Schools (CHPS) and Office Spaces

**SOUND:** Impact Insulation Class (IIC): ASTM E2179-03. **IIC = 20**

Sound Transmission Class. (STC): ASTM E90-04, ASTM E413-04 **STC = 15**

Noise Reduction Coefficient (NRC): **NRC = 0.50**

Sound Absorption Average (SAA): **SAA = 0.49**

**INSTALLATION:** Acoustical Adhesive

### Product Features:

- Economical
- Recycled "Green" Product
- May Contribute Toward LEED Credits
- 100% Pre-Consumer Recycled Synthetic Fiber
- Tackable
- Easy to Install

### Typical Applications:

Soundproof backer for Wallmate, flooring underlay-ment, behind drywall and other applications.

Acousti-Board Ultra – Sound Transmission Class

Size	125Hz	250Hz	500Hz	1KHz	2KHz	4KHz	STC
1/2"	12	14	13	14	17	21	<b>15</b>

Acousti-Board Ultra – Sound Absorption

Size	Mount	125Hz	250Hz	500Hz	1KHz	2KHz	4KHz	NRC
1/2"	A	.05	.12	.32	.69	.83	.87	<b>.50</b>