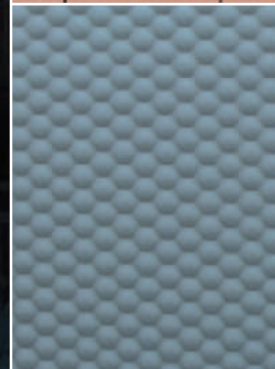
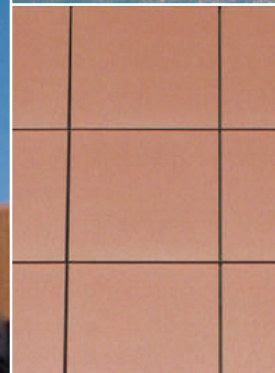


07 40 00/CEN  
BuyLine 9165



ARCHITECTURAL METAL WALL AND ROOF SYSTEMS

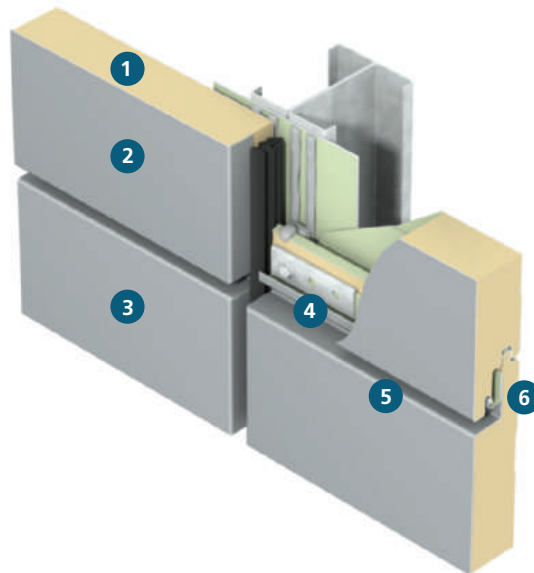
  
**CENTRIA**

# Distinctively INNOVATIVE. Distinctively SUSTAINABLE. Distinctively INSTALLED.

CENTRIA is the place where owner and architect visions are realized, contractor challenges are conquered and discoveries are made for greener ways to build with metal. Through continuous pursuit of excellence and innovation in the design, engineering and manufacturing of exterior wall and roof systems, no other company does more to improve the aesthetics, durability and performance of our world's commercial buildings than CENTRIA.



CENTRIA Formawall is the most advanced insulated metal composite wall system available today, providing outstanding thermal, moisture and air infiltration; integrated window, louver and sunshade offerings; and unprecedented design freedom from two design series – Dimension Series® and Graphix Series™. All Formawall panels may be installed vertically or horizontally, and are often curved in a design. Formawall is simply the most complete wall system available today.



- 1 Insulating foam core, factory foamed-in-place, provides a thermally efficient exterior wall in either 2" [51mm] or 3" [76mm] thickness
- 2 Durable metal skins provide impact resistance, strength for increased span capability and a built-in vapor barrier
- 3 High performance coatings offer long-term performance, minimal maintenance and excellent color selection for your building's exterior
- 4 Concealed clips and fasteners provide a sleek exterior appearance with proven long-term performance
- 5 Variable reveal sizes, 1/2" [13mm] to 6" [152mm]
- 6 Rainscreen and pressure equalization design with concealed sealant protects against water penetration

2  
16

## FORMAWALL® DIMENSION SERIES®

For complete  
details and  
specifications  
visit  
CENTRIA.com

Parkwest Medical Center  
Knoxville, TN  
Architect:  
Earl Swensson Assoc. Inc  
Nashville, TN





With Formawall® Dimension Series®, designers combine panels of varying thickness, width of reveal, and profile shape to give walls unique articulations and shadows.

#### VARYING PANEL THICKNESS

Combine Formawall panels of varying thickness – 2" thick or 3" thick.

#### VARYING REVEALS

Specify the width of Steel Faced Formawall panel reveals – anywhere from 1/2" to 6" in 1/2" increments.

Aluminum Faced Formawall panel reveals, consult CENTRIA

#### STEEP SLOPE JOINTS

With optional steep sloped joints Formawall panels can be installed horizontally on an angle.

#### DS-59 PROFILE

Explore even more interesting wall articulations by incorporating optional 2" thick panel profile shapes. (12" wide only)

#### DS-60 PROFILE

## SUBSTRATE & CORE

- Standard – 22/26 gage G-90 galvanized steel face and liner with HCFC-free polyurethane or polyisocyanurate foam-insulated core
- Optional gages available – consult CENTRIA
- Optional – stainless steel face sheet, 304 stainless steel, 22 or 20 gage, smooth, embossed or striated
- Optional – .040 Aluminum Face (2" thick only), flat embossed or smooth striated

## JOINERY

- Horizontal oriented panel – Rainscreen, pressure-equalized and drainable joinery, 1/2" nom. joint – standard
- Vertical oriented panel – Double tongue-and-groove, 1/8" nom. joint – standard

## SURFACE FINISH

- Exterior – Non-directional embossed flat or striated  
– Smooth flat or striated
- Interior – Non-directional embossed planked or flat  
– Smooth planked

## PANEL WIDTH

- Available from – 10" to 40"

## PANEL LENGTH (Steel Face)

- Smooth – 16' max.
- Embossed striated – 37' max.
- Embossed – 37' max.
- Smooth striated – 20' max.
- Duracast – 28' max.

## PANEL LENGTH (Aluminum Face)

- Embossed – 12'6" max.
- Smooth striated – 12'6" max.

## PANEL THICKNESS/DEPTH OF REVEAL

- 2" with 1-3/16" deep reveal – standard
- 3" with 2-3/16" deep reveal

## "R" VALUE

- 2" panel with 1/2" reveal – R14
- 3" panel with 1/2" reveal – R21

R-Values are based on ASTM C1363.  
Air films are included.

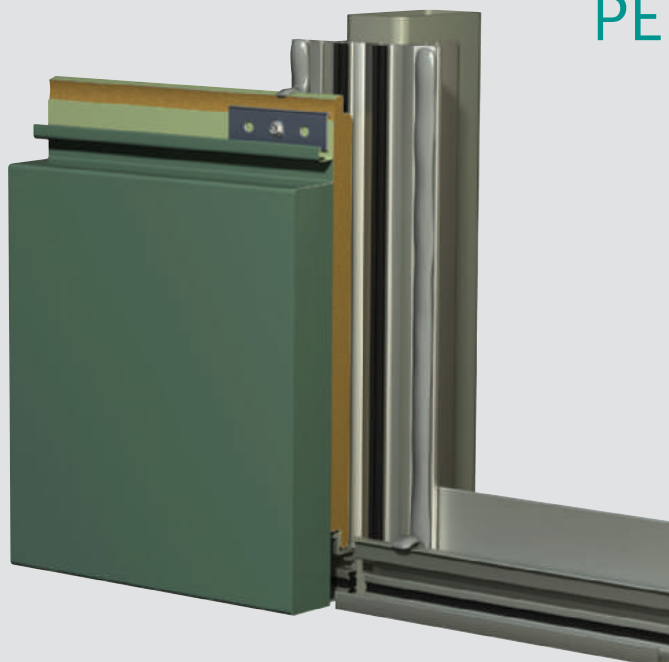


# FORMAWALL® DIMENSION SERIES® PE PERFORMANCE OPTION

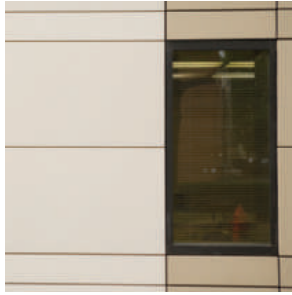
Formawall® Dimension Series PE features an integral pressure equalized vent drainage channel for Formawall Dimension Series and Formawall Graphix Series exterior metal wall panels. The continuous air seal is not compromised by the seal plate venting and the plate transfers load to vertical support. This design creates two lines of defense against water intrusion.

## FEATURES & BENEFITS

- Pressure-equalized vertical & horizontal joinery
- Lightweight – easy to handle and install
- Mitered panels permit clean, sharp corners and soffit transitions
- High strength panels offer increased span capability with less framing required
- Concealed clips, fasteners and sealants
- Trimless ends eliminate overlapping
- Cradle to Cradle<sup>SM</sup> Certification
- Integrated louvers and sunshades available
- Thermal break between face and liner offers efficient panel R-Values



## INTEGRATION OPTIONS



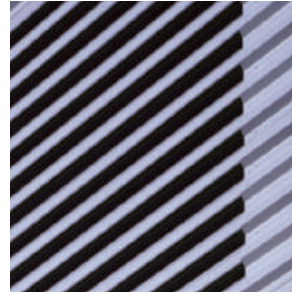
### Formavue® Windows

Full line of windows for any framing type that integrate mechanically with Formawall panels for the highest performing panel/window interface



### C/S Sunshades

Attractive and functional sunshades designed specifically for thermal and structural integration with Formawall panels and Formavue windows



### C/S Louvers

High-quality line of fixed, drainable and storm-resistant louvers engineered specifically for fast and easy integration with Formawall panels



### Kalwall® Translucent Windows

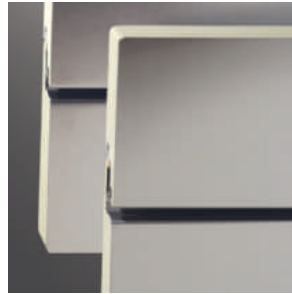
Lightweight yet strong, these window systems combine the beauty of diffused, natural lighting with the functional qualities of high insulation, shatterproof construction and low maintenance

## FINISH OPTIONS



### Duracast® Textured Finish

Create a textured wall appearance with this durable textured coating. Available in eight standard natural earthtones



### Stainless Steel

A strikingly beautiful choice of substrate that instantly elevates any project to a higher echelon



### Aluminum

Available either smooth or embossed, aluminum facing offers increased design versatility and performance



4  
16

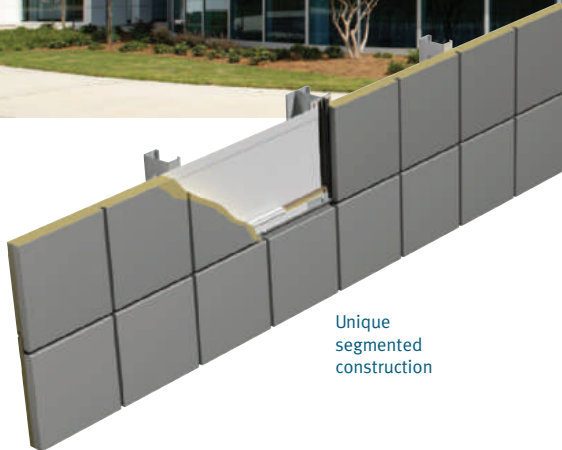
For complete  
details and  
specifications  
visit  
[CENTRIA.com](http://CENTRIA.com)

# FORMAWALL® DIMENSION SERIES®

## THE COMPLETE WALL SYSTEM

Tacoma Public Utilities  
Administration Building  
Tacoma, WA  
Architect:  
BCRA Architects  
Tacoma, WA





Unique  
segmented  
construction

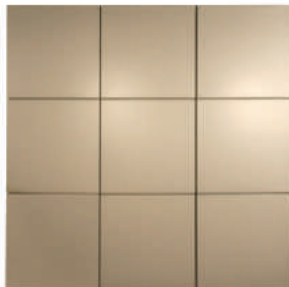
Formawall® Graphix Series™ segmented construction creates the illusion of multiple smaller panels from a single large wall panel – easily and economically.

- Segments can be specified as frequently as every 12" across the length of a Formawall panel for virtually unlimited grid like design possibilities.
- Add Formawall panel reveals – 1/2" to 6" – to a Graphix Series design for even more possibilities.
- Reduced length of weather joints leads to reduced risk of leaks.
- Faster erection/assembly.

NOTE: Graphix Series panels are not available with DS-59 or DS-60 panels, in stainless steel, or with a striated surface finish. Maximum panel length is 20'.

### EASILY CREATE THESE COMPLEX PATTERNS FROM FEWER PANELS

The appearance of nine individual panels is created from just three Graphix Series panels.



The appearance of 28 individual panels is created from just five Graphix Series panels.



## FORMAWALL® GRAPHIX SERIES™

### GRAPHIX SERIES DESCRIPTION

Insulated metal composite wall panel system

#### SUBSTRATE & CORE

- Standard – 22/26 gage G-90 galvanized steel face and liner with HCFC-free polyurethane or polyisocyanurate foam-insulated core
- Optional gages available – consult CENTRIA
- Optional – .040 Aluminum face (2" thick only), embossed\* and smooth

#### JOINERY

- Horizontal oriented panel – Rainscreen, pressure-equalized and drainable joinery, 1/2" nom. joint – standard
- Vertical oriented panel – Double tongue-and-groove, 1/8" nom. joint – standard
- Segmented joint – 5/8" x 3/4" deep embossment with factory applied black gasket, standard
  - Max. segments per panel – 12
  - Min. length of segment – 1'

#### SURFACE FINISH

- Exterior – Non-directional embossed – Smooth flat
- Interior – Non-directional embossed planked or flat – Smooth planked

#### PANEL WIDTH

- Available from 10" to 40"

#### PANEL LENGTH (Steel Face)

- 20' max.

#### PANEL LENGTH (Aluminum Face)

- Embossed, Flat – Overall Max. Length – 12'6"
  - Max. Length of Segment – 11'6"
  - Min. Length of Segment – 12"
  - Max. Number of Segments – 12
- Smooth, Flat
  - Overall Max. Length – 12'6"
  - Max. Length of Segment – 4'
  - Min. Length of Segment – 12"
  - Max. Number of Segments – 12

#### PANEL THICKNESS

- 2" – standard
- 3" – consult CENTRIA

\* Length and reveal restrictions apply, please consult CENTRIA



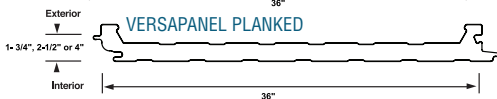
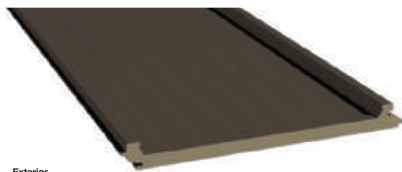
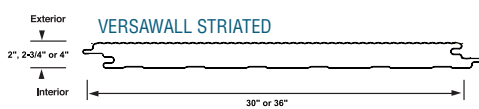
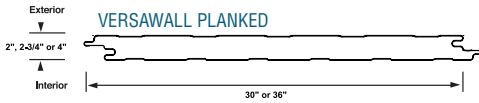
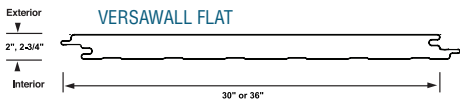
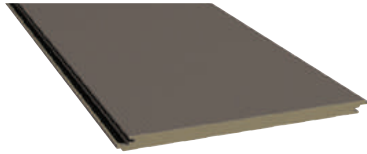
## DESCRIPTION

Insulated metal composite wall and roof system

Versawall and Versapanel (Cradle to Cradle certified) insulated metal composite panels install vertically to create a wall with advanced thermal and moisture protection properties.

Architects enjoy the systems' ability to provide long, uninterrupted sight lines – up to 48 feet. Plus, Versawall and Versapanel wall panels can be coated with CENTRIA Duracast® to provide a natural textured look.

Versapanel is extra-versatile. With its bold standing seam, Versapanel doubles as a high-performance insulated roof when combined with its watertight, snap-on batten cap.



## SUBSTRATES

- Standard – 26/26 G-90 galvanized steel face and liner with HCFC-free foam insulated core
- Optional gages available, consult CENTRIA

## JOINERY

- Double tongue-and-groove joinery with factory-applied air and vapor seal Surface Finish
- Versawall Exterior – Non-directional embossing, flat, striated or planked. For non-embossed and non-striated consult CENTRIA
- Versapanel Exterior – Non-directional embossing, planked or flat
- Interior – Non-directional embossing, planked
- Optional Duracast textured finish is available for Versawall and Versapanel wall applications, consult CENTRIA for panel length options

## PANEL WIDTH

- Versawall – 30", 36"
- Versapanel – 36"

## PANEL LENGTH

- 6' to 40' standard
- 48' max. consult CENTRIA

## PANEL THICKNESS

- Versawall – 2", 2-3/4" nom.
- Versapanel – 1-3/4", 2-1/2"

## "R" VALUE

Versawall

- 2" depth – R14
- 2-3/4" – R20
- 4" – R27

Versapanel

- 1-3/4" – R14
- 2-1/2" – R19
- 4" – R27

R-Values are based on ASTM C1363

Air films are included.



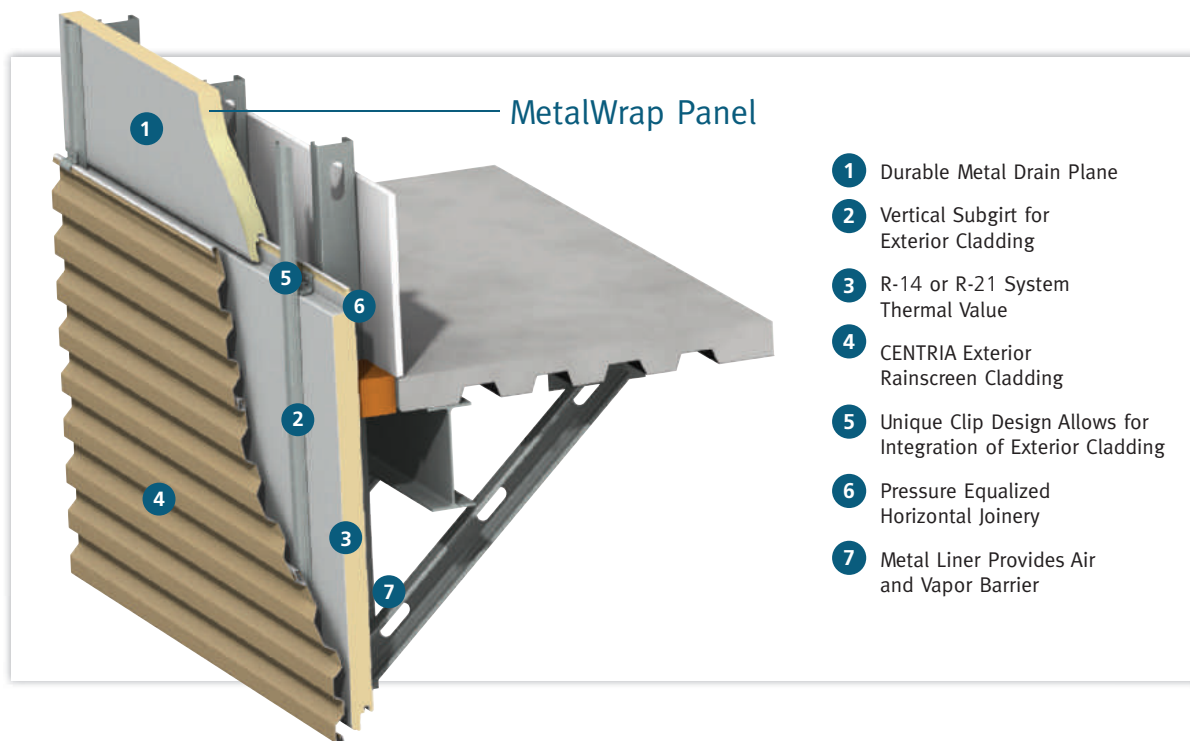
6  
16

# VERSAWALL® & VERSAPANEL® WALL & ROOF SYSTEMS

For complete details and specifications visit [CENTRIA.com](http://CENTRIA.com)

Cal Train Maintenance Facility  
San Jose, CA  
Architect:  
STV  
Los Angeles, CA





### Distinctively Innovative.

CENTRIA introduces the latest in metal wall technology. MetalWrap is an alternative thermal, air and moisture backup panel system designed specifically for CENTRIA non-insulated metal wall systems, such as FormaBond® and Profile Series.

With its integrated single-panel design, MetalWrap is the smart and economical backup panel choice. With MetalWrap, there is no need for conventional batt or board insulation, exterior gypsum board, air barriers, vapor retarders or building wraps, which reduces the amount of waste at the worksite and decreases labor costs and coordination. Because MetalWrap makes use of ATMP® building envelope science, it effectively controls moisture without sacrificing thermal efficiency, making it a highly superior product.

## METALWRAP™ INSULATED COMPOSITE BACKUP PANEL SYSTEM

7  
16

### DESCRIPTION

Foam Insulated Composite Backup Panel

#### FEATURES & BENEFITS

- Single-panel design allows for one-step installation and lower labor costs
- Flexible design allows for application of CENTRIA horizontal and vertical exterior cladding
- Faster close-in and dry-in for reduced building costs
- High R-Values reduce energy costs
- Superior water drain plane
- Excellent moisture, air and thermal barriers
- Unique foam insulated composite backup system
- Minimal construction waste
- Universal backup wall solution for all building types in any climate

#### THICKNESS

- 2" [51mm] or 3" [76mm]

#### THERMAL SYSTEM

- 2" [51mm] – R-14
- 3" [76mm] – R-21

#### WIDTH

- 36" [914mm]

#### LENGTH

- 12' [3.66m] or 20' [6.10m] standard lengths

#### FACE AND LINER

- 29GA AZ-50 Galvalume Plus

#### FOAM INSULATION

- High performance air and water testing

Bartle Hall Convention  
Center Ballroom  
Kansas City, MO  
Architect:  
HNTB Architecture Inc.  
Kansas City, MO



Unlike ordinary ACM – made by lamination, then fabricated into panels by a second party – FormaBond is manufactured entirely by CENTRIA using a proprietary reaction injection molding process. The result is a stronger, flatter, finished ACM panel, with a pressure-equalized open, dry joinery. The panels' joinery are engineered to prohibit the entry of water without using sealants. Yet, because of its open design, this joinery also provides optimum venting to allow wall cavities to dry any residual vapor or moisture. CENTRIA also provides window, louver and sunshade components that are engineered to integrate with FormaBond panels.



8  
16

## FORMABOND® WALL SYSTEM

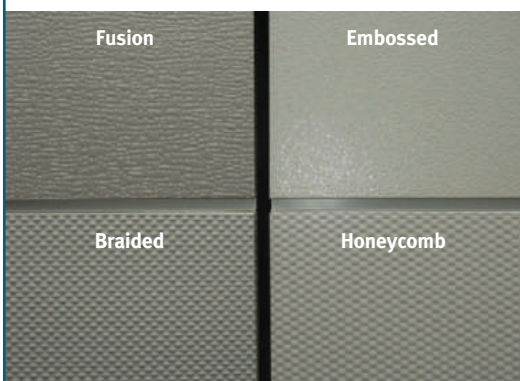
For complete  
details and  
specifications  
visit  
[CENTRIA.com](http://CENTRIA.com)

### DESCRIPTION

Aluminum composite wall panel system

#### SUBSTRATE & CORE

- Metal – 0.032" nominal aluminum face and liner
- Core – Highly cross-linked polymer that meets fire code requirements
- 8mm sheet thickness
- Smooth, Fusion, Embossed, Braided or Honeycomb Surface Finish



#### JOINERY

All dry construction that is pressure equalized and provides ventilation to the inner wall cavity

#### PANEL WIDTH

- Up to 60"

#### PANEL LENGTH

- Up to 180"

#### VARIABLE REVEALS

- From 1/2" to 6" in 1/2" increments. May also be colorized

#### COATINGS

- Available in micas, metallics, and Fluorofinish

#### PERFORMANCE

- High performance water testing
- Pressure-equalized joinery
- AAMA 508-05



## DESCRIPTION

Concealed fastener pre-formed wall panel system

07 40 00/CEN

BuyLine 9165

The ribs of these six interchangeable panels are based on an identical asymmetrical form. Thousands of combinations of patterns, articulations, shadows and sight lines may be achieved by creatively combining these panels in either vertical or horizontal orientations.

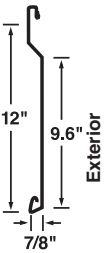
## SUBSTRATES

- Standard 22-18 gage G-90 galvanized steel
- Optional 24 gage CS-260 and CS-660 only
- Galvalume® steel, aluminum or stainless steel – optional
- Smooth or embossed surface texture

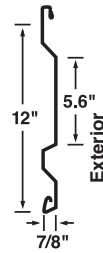
## CONCEPT SERIES PROFILES

- Lengths up to 30'
- Concealed clips and fasteners
- Stand-off clip provides ventilation cavity and continuous drain plane behind panel
- May be installed vertically or horizontally
- Common joint design permits multiple profile integration
- Concealed fastener extended leg option

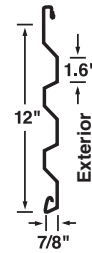
CS-200\*



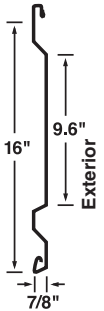
CS-210



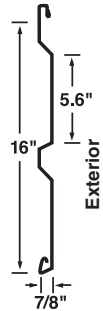
CS-260



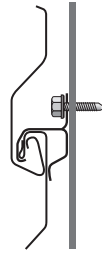
CS-610\*



CS-620\*



CS-660



CONCEALED CLIP  
With Standoff



CONCEALED  
Fastener Extended  
Leg Optional

Concealed with  
flush clip,  
consult CENTRIA



# CONCEPT SERIES® WALL SYSTEM

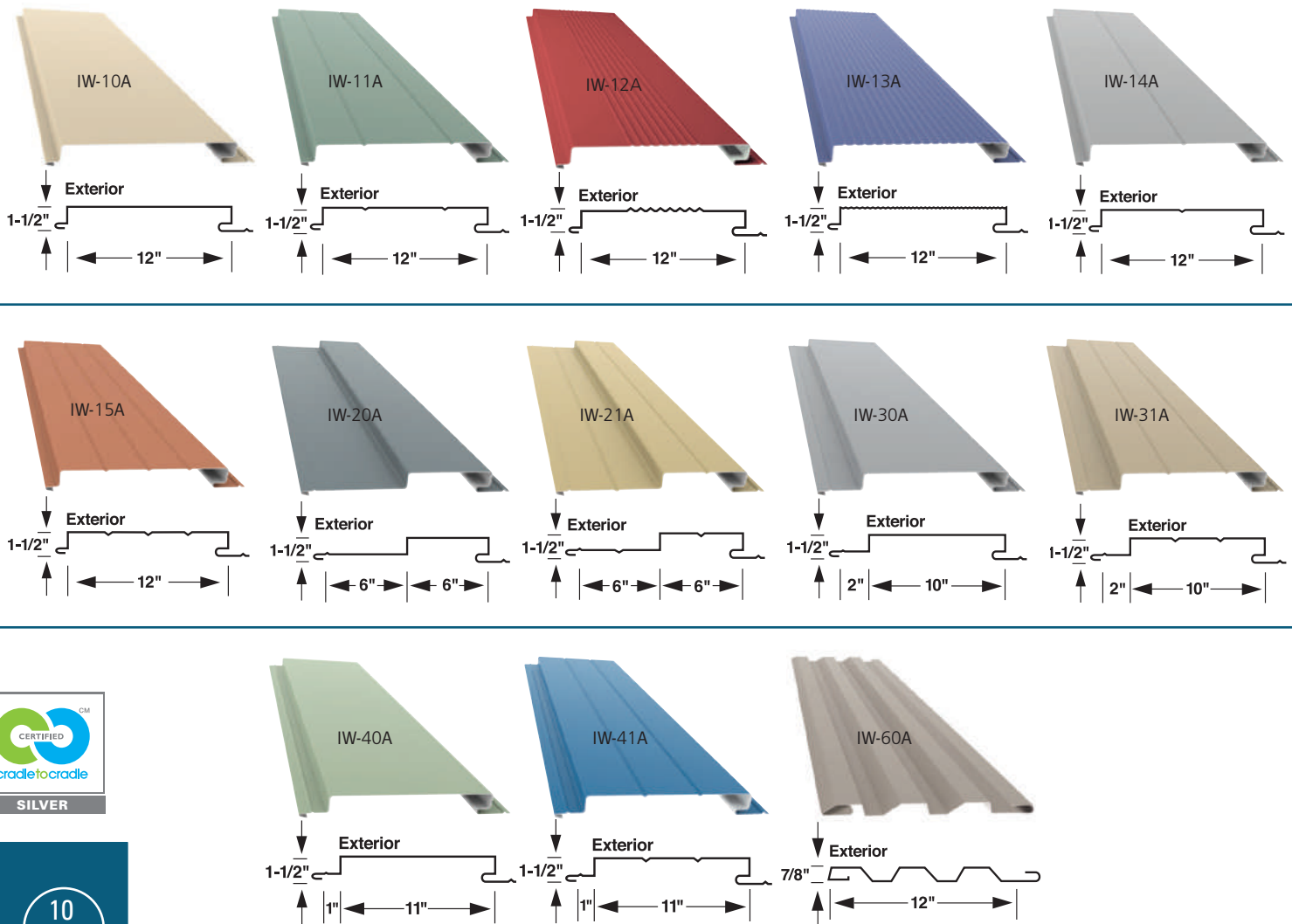
Harrah's Chester Casino & Race Track  
Chester, PA  
Architect:  
SOSH Architects  
Atlantic City, NJ

## OPTIONS

- MicroLine™ Extrusions – Slim, 2" wide aluminum trim for finishing around windows and doors, at corners and joints, and at the head and base of walls (horizontal or vertical panel)
- MicroSeam® Corners – Perfectly seamless inside or outside corners with no welds or pop rivets
- Liner Panels – Used for creating an attractive, finished interior for a field-assembled wall
- Firewall System – Field-assembled wall systems that employ layers of gypsum to provide UL 1-hour through 4-hour firewalls
- Quietwall™ System – Field-assembled wall system with specific sound absorption or transmission loss values

\*Patent No.: US D527,834; D538,948

These thirteen panels come in your choice of flat panels or with reveal depths of 1", 2" or 6", with or without pencil bead stiffeners. By combining these panels in either a vertical or horizontal fashion, you're able to create thousands of combinations of attractive wall patterns and designs.



10  
16

## IW SERIES WALL SYSTEM

For complete details and specifications visit [CENTRIA.com](http://CENTRIA.com)

### DESCRIPTION

Concealed fastener pre-formed wall panel system

### SUBSTRATES

- Standard 22-18 gage G-90 galvanized steel
- Optional 24 gage IW-13A, IW-21A and IW-60A
- Galvalume® steel, aluminum or stainless steel – optional
- Smooth or embossed surface texture

### IW SERIES PROFILES

- Lengths up to 30'
- Horizontal or vertical wall installation
- Lock-joint design of IW-10A through IW-41A makes panels interchangeable
- 2" swaged laps are available in gages lighter than 18
- Not available for IW-12A, IW-14A, IW-15A and IW-60A

### OPTIONS

- MicroLine™ Extrusions – Slim, 2" wide aluminum trim for finishing around windows and doors, at corners and joints, and at the head and base of walls (horizontal panels only)
- MicroSeam® Corners – Perfectly seamless inside or outside corners with no welds or pop rivets
- Liner Panels – Used for creating an attractive, finished interior for a field-assembled wall
- Firewall System – Field-assembled wall systems that employ layers of gypsum to provide UL 1-hour through 4-hour firewalls
- Quietwall™ System – Field-assembled wall system with specific sound absorption or transmission loss values



## DESCRIPTION

Exposed fastener pre-formed wall and roof panel systems

07 40 00/CEN

BuyLine 9165

## SUBSTRATES

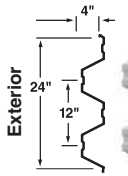
- Standard 24-18 gage G-90 galvanized steel\*
- Galvalume® steel, aluminum or stainless steel – optional
- Smooth or embossed surface texture

## EXPOSED FASTENER PROFILES

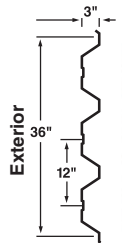
- Horizontal or vertical wall installation
- Wall and roof installation
- Lengths up to 40', consult CENTRIA for longer lengths

\* Super-Rib is not available in 24 gage

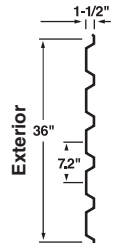
**SUPER-RIB**



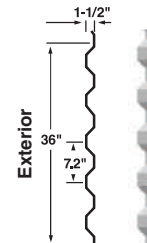
**MR3-36**



**BR5-36**



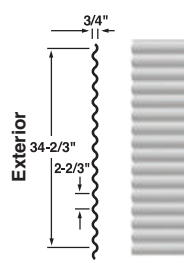
**STYLE-RIB**



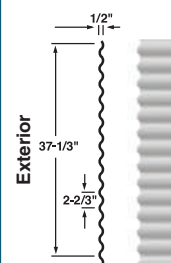
**TR4-36**



**ECONOLAP-3/4"**



**ECONOLAP-1/2"**



# EXPOSED FASTENER WALL & ROOF SYSTEM

CENTRIA manufactures seven exposed fastener profile panels. In addition to wall panels, these versatile panels may also be used for roofing, and soffit applications, they are readily curved for walls, canopies, awnings, parapets, column and beam wraps and more. Like all CENTRIA profile panels, these panels can be mixed and matched to create virtually unlimited designs.

## OPTIONS

- MicroLine™ Extrusions – Slim, 2" wide aluminum trim for finishing around windows and doors, at corners and joints, and at the head and base of walls (BR5-36, Style-Rib, TR4-36 and Econolap 3/4" Horizontal only)
- MicroSeam® Corners – Perfectly seamless inside or outside corners with no welds or pop rivets (all profiles except Econolap 1/2")
- Liner Panels – Used for creating an attractive, finished interior for a field-assembled wall
- Firewall System – Field-assembled wall systems that employ layers of gypsum to provide UL 1-hour through 4-hour firewalls
- Quietwall™ System – Field-assembled wall system with specific sound absorption or transmission loss values
- Curving is available in a wide selection of exposed fastener profiles, finishes and colors to match virtually any architectural, commercial or industrial application.

# ECOSCREEN® PERFORATED SCREENWALL

CENTRIA offers exterior and interior perforated screenwall panels using CS-260, CS-660, Econolap 3/4", MR3-36, Style-Rib, and BR5-36 in 20 gage stainless steel and 0.040" painted aluminum. This unique fabrication provides a 10% to 40% open area for the effect of a translucent screen to control light, air movement and provide safety and security.

Perforated screenwalls can help blend industrial and other functional applications with the surrounding communities.

Please consult CENTRIA for optional panels and perforation patterns. **Paint finish not warranted in perforated panels.**

## ECOSCREEN PERFORATION PATTERN OPTIONS

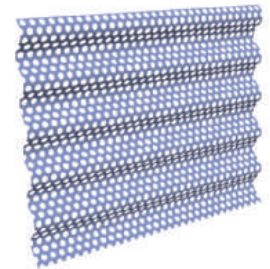
Open/Free Area	Pattern	Diameter (in)	Spacing (in)
<b>10</b>	<b>Reverse</b>	<b>1/8</b>	<b>3/8</b>
23	Staggered	1/8	1/4
23	Reversed	1/4	1/2
30	Staggered	1/8	7/32
33	Staggered	3/16	5/16
40	Staggered	1/8	3/16
<b>40</b>	<b>Staggered</b>	<b>3/8</b>	<b>9/16</b>

Bold lines are standard. For additional patterns, contact CENTRIA.

BR5-36



ECONOLAP 3/4"



CS-660



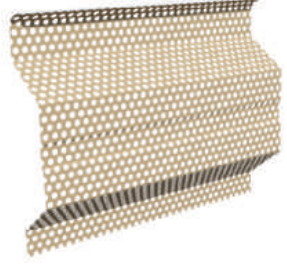
STYLE-RIB



CS-260



MR3-36



Images showing standard 40% open area staggered pattern, 3/8" [10mm] diameter, 9/16" [14mm] spacing.



12  
16

# SOLARCREST™ SOLAR ROOF SYSTEM

For complete details and specifications visit [CENTRIA.com](http://CENTRIA.com)

## DESCRIPTION

BIPV Metal Roof Systems

## FEATURES & BENEFITS

- Integrated and lightweight – allows for easy installation
- Long-lasting solar panel solution that stands up to foot traffic
- Allows for curved roof design (Not available with Versapanel)
- Reduced building and labor costs – BIPV factory integrated onto panels – no on-site assembly required
- Provides 20% more energy production (kWhr) per rated output than previous solar roofing products

- Contributes to the U.S. Green Building Council's LEED Certification
- Backed by a 20 Year Warranty

## SUBSTRATES

- Standard – 26/26 gage

## SURFACE FINISH

- EXTERIOR – Non-directional embossing, non-planked
- EXTERIOR – Non-directional embossing, planked

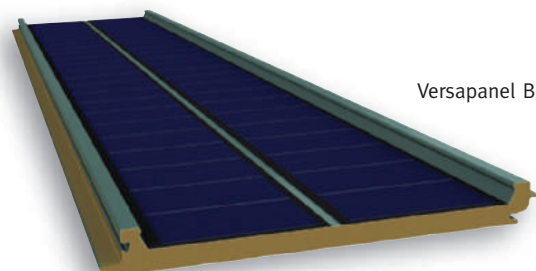
## PANEL WIDTH

- 36"

## PANEL THICKNESS

- 1-3/4", 2-1/2", 4"

SolarCrest solar roof panels are pre-engineered and manufactured using CENTRIA's Versapanel foam composite roof panels to provide superior thermal insulation, weather resistance and an air and vapor barrier. SolarCrest also adds a new level of performance to CENTRIA's standing seam metal roof panels – SRS2, SDP-200 and SDP-175.



Versapanel BIPV



## DESCRIPTION

SRS® Structural standing seam roof system

### SUBSTRATES

- SRS 2 – 24-20 gage
- SRS 3 – 24-18 gage
- G90 galvanized steel, Galvalume®, stainless steel, and aluminum

### PANEL WIDTH

- 12", 16", 18"

### PANEL DEPTHS

- SRS 2 – 2"
- SRS 3 – 3"

### PANEL LENGTH

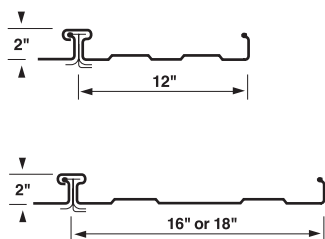
- Factory-formed – up to 48'-0" max. – standard, up to 60'-0" – optional
- Field-formed – 220'-0" max.

Oil canning within industry standard guidelines as defined by MCA is not a cause for rejection.

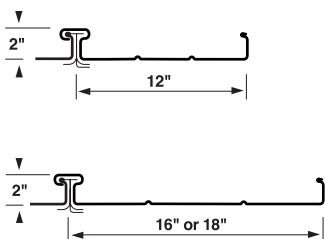


## SRS® STRUCTURAL STANDING SEAM ROOF SYSTEMS

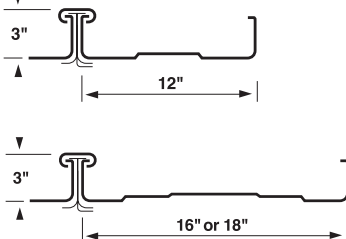
### SRS 2 PLANKED



### SRS 2 PENCIL BEAD



### SRS 3 PLANKED



### OTHER ROOF PROFILES

#### ARCHITECTURAL DESIGN PANELS

##### ADP 100



##### ADP 100C



##### ADP 100B



#### OTHER STRUCTURAL DESIGN PANELS

##### SDP 175



##### SDP 200



# COATING SYSTEMS AND SUBSTRATES

## Distinctively Protected.

CENTRIA has devoted more than 100 years to the art and science of producing color coated metal walls and roofs that impart the very best in aesthetics and performance. This includes a wide variety of high-quality coating systems, a full palette of colors and a range of substrates and surface textures to meet even the most demanding environmental conditions.

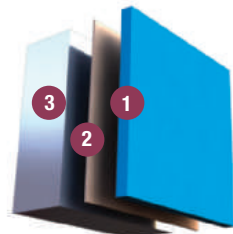
### THE INDUSTRY'S WIDEST ARRAY OF COLORS

CENTRIA offers you a full array of colors (see CENTRIA Colors brochure) including micas and bright metallics.

### CUSTOM COLOR MATCHING

CENTRIA is also equipped with the latest color matching technology enabling us to provide fast turnaround on even the most unique or unusual colors.

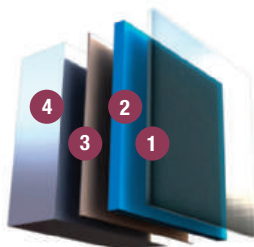
For complete information on CENTRIA coating systems, contact us for a copy of our coatings brochure.



### FLUOROFINISH\*\*

A Kynar 500®, or Hylar 5000® coating providing good durability.

- 1 0.8 mil [20 micron] nominal Color Coat
- 2 0.2 mil [5.1 micron] nominal Primer
- 3 Substrate



### DURAGARD® PLUS

A premium, high build architectural coating providing the ultimate in color retention and fade resistance.

- 1 0.8 mil [20 micron] nominal Polyvinylidene Fluoride Clear Coat\*
- 2 0.8 mil [20 micron] nominal Polyvinylidene Fluoride Color Coat\*
- 3 0.8 mil [20 micron] nominal Primer
- 4 Substrate

### Duragard®

0.8 mil [20 micron] nominal Polyvinylidene Fluoride Color Coat\*

0.8 mil [20 micron] nominal Primer

### Prismatic™ Series Colors – Fluorofinish, Duragard and Duragard Plus

			Unless specified otherwise, CENTRIA will provide a standard backer coat on the reverse side of single skin panels. Color may vary. Polyester Arctic Ice is the standard finish offering for the interior surfaces of foam panels. Other finishes available upon request.				

C ENERGY STAR® qualified cool roofing color for low\* or steep\* slope applications

CS ENERGY STAR qualified cool roofing color for steep\* slope application

† Standard Duracast finish color. Consult CENTRIA for custom colors.

- Low Slope Roofs: - 2:12, Steep Slope Roofs: > 2:12

Colors shown are for preliminary selection only. Printed colors can vary from actual painted material.

Contact CENTRIA for painted metal samples before final selection.

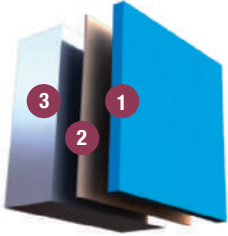
Cost of CENTRIA coatings may vary depending on color and finish selection.

NOTE: Because of the differences in the formulation and application properties of spray-applied coatings versus coil coatings, a slight color variation is likely to occur when matching coatings of these different types.

14  
16

For complete  
details and  
specifications  
visit  
CENTRIA.com

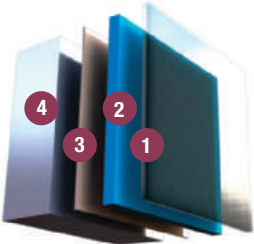




#### SUNDANCE MICA\* 2-COAT FINISH

A Kynar 500®, Hylar 5000® or FEVE-based coating providing good durability.

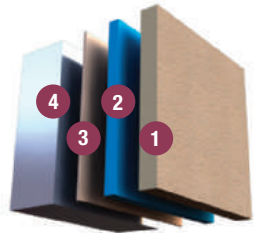
- 1 0.8 mil [20 micron] nominal Color Coat
- 2 0.2 mil [5.1 micron] nominal Primer
- 3 Substrate



#### SUNDANCE AM-ALUMINIUM METALLIC 3-COAT FINISH

A quality, durable coating providing the iridescence and reflectivity of a metallic surface.

- 1 0.5 mil [12.7 micron] nominal Polyvinylidene Fluoride Clear Coat\*
- 2 0.8 mil [20 micron] nominal Polyvinylidene Fluoride Color Coat\*
- 3 0.2 mil [5.1 micron] nominal Primer
- 4 Substrate



#### DURACAST® TEXTURED FINISH SYSTEM\*\*

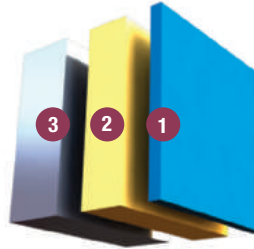
Factory-applied coating with natural aggregate matrix providing the look and feel of precast. Available exclusively for Formawall Dimension Series, Formawall Graphix Series and Versawall panels.

- 1 Acrylic and Natural Aggregate Matrix
- 2 0.8 mil [20 micron] nominal Polyester
- 3 0.2 mil [5.1 micron] nominal Primer
- 4 Substrate

\*\* Subject to minimum quantity requirements.

#### VERSACOR® ULTRA

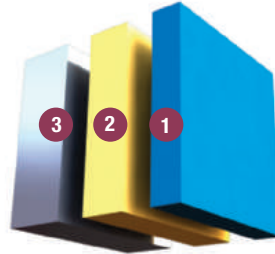
A premium, high build, multi-layer coating for applications where corrosion and abrasion resistance is more important.



#### VERSACOR® ULTRA PF

An excellent coating for corrosive architectural applications.

- 1 0.8 mil [20 micron] nominal PVDF Coat
- 2 3.0 mil [75 micron] nominal Versacor Ultra Barrier Coat Primer
- 3 Substrate



#### VERSACOR® ULTRA TF and HF

A coating merging the superior corrosion resistance of the Versacor Barrier Coat Primer with the durability of a Urethane Finish.

- 1 1.5 or 3.0 mil [38 or 75 micron] nominal Urethane Coat
- 2 3.0 mil [75 micron] nominal Versacor Ultra Barrier Coat Primer
- 3 Substrate

#### What is Reverse Side Coating Protection?

On CENTRIA's Profiled Series panels with a Versacor Ultra coating system, an additional Versacor Barrier Coating Primer is applied to the interior of the metal substrate. Then either a wash coat, Urethane top coat or primer are applied over the barrier coat. This additional coating protects the metal against corrosion from the interior and at lap conditions. Another reason Versacor Ultra provides superior protection.

#### AVAILABLE SUBSTRATES

- Standard G-90 hot-dip galvanized steel conforming to ASTM A924 and ASTM A653 structural quality
- Galvalume steel, unpainted hot-dip coated with aluminum-zinc alloy conforming to ASTM A924 and ASTM A792
- Stainless Steel\*\*, Type 304 AISI architectural grade alloy; austenitic, non-magnetic, non-glare surface; slight variation in surface finish
- Aluminum Alloy 3003 or 5052 and for standing seam roof panels, 3004\*\*, available in smooth surface as a substrate

#### Sundance™ Series Colors

##### Sundance Mica 2-coat



##### Sundance AM Aluminum Metallic 3-coat



Custom colors may require an additional clear and/or barrier coat. Consult CENTRIA for details.

#### Duracast



\*Polyvinylidene Fluoride (PVDF) coat contains 70% Kynar 500 or Hylar 5000 resin. Kynar 500 is a Reg. TM of Atofina Chemicals, Inc. Hylar 5000 is a Reg. TM of Solvay Solvents, Inc. Galvalume is a Reg. TM of BIEC International, Inc.

NOTE: Galvalume, Stainless and Aluminum may not be available for all product profiles or coating systems. Consult CENTRIA sales. Galvalume offers improved heat resistance only when used unpainted.



## NORTHEAST REGION

**1.800.586.1372**

### Baltimore, MD

Phone: 410.549.6018  
Fax: 410.795.5984

### Boston, MA

Phone: 978.779.7929  
Fax: 978.779.7930

### Hartford, CT

Phone: 860.659.4045  
Fax: 860.659.4034

### Newark, NJ

Phone: 917.405.6428  
Fax: 973.327.2426

### New York, NY

Phone: 914.834.7697  
Fax: 914.833.1843

### Philadelphia, PA

Phone: 215.643.6040  
Fax: 215.643.0629

### Pittsburgh, PA

Phone: 412.299.8175  
Fax: 412.299.8016

### Syracuse, NY

Phone: 315.263.0497  
Fax: 315.214.3753

### Washington, DC

Phone: 703.406.9588  
Fax: 703.406.9457

## SOUTH CENTRAL REGION

**1.800.586.1372**

### Atlanta, GA

Phone: 678.947.4407  
Fax: 678.947.4612

### Charlotte, NC

Phone: 704.341.0202  
Fax: 704.341.0204

### Cincinnati, OH

Phone: 513.793.9160  
Fax: 513.793.9161

### Detroit, MI

Phone: 734.529.7256  
Fax: 734.529.7257

### Greenville, SC

Phone: 864.288.9129  
Fax: 864.288.7401

### Indianapolis, IN

Cell: 317.514.7330  
Fax: 317.566.9675

### Memphis, TN

Phone: 901.550.0355  
Fax: 901.861.8144

### Milwaukee, WI

Phone: 262.538.4415  
Fax: 262.538.4417

### Sarasota, FL

Phone: 941.342.0722  
Fax: 941.342.8862

### Western Michigan

Phone: 248.486.6867  
Fax: 248.486.8939

## WEST REGION

**1.888.745.8527**

### Dallas, TX

Phone: 972.422.5856  
Fax: 972.390.9103

### Denver, CO

Phone: 303.743.7430  
Fax: 303.743.7451

### Des Moines, IA

Phone: 630.922.3303  
Fax: 630.922.3833

### Houston, TX

Phone: 281.397.9900  
Fax: 281.397.6363

### Minneapolis, MN

Phone: 763.577.1417  
Fax: 763.577.0319

### Phoenix, AZ

Phone: 480.282.2799  
Fax: 602.997.7062

### San Francisco, CA

Phone: 650.369.9400  
Fax: 650.369.9483

### St. Louis, MO

Phone: 314.432.3434  
Fax: 314.432.6863

### Seattle, WA

Phone: 253.460.3779  
Fax: 253.460.1664

### Southern California (Los Angeles)

Phone: 949.589.0997  
Fax: 562.690.1610

**1.800.759.7474**

1005 Beaver Grade Road, Moon Township, PA 15108-2944  
Phone: 412.299.8000  
Fax: 412.299.8317

Office of Business Development  
Phone: 860.490.2670

**www.CENTRIA.com**

CENTRIA products have inherent sustainable characteristics. Our products are primarily composed of steel and other metals which have been, and can repeatedly be, recycled. Our factory foamed insulation provides an insulation value in excess of alternative systems saving energy cost and fuel resources.

CENTRIA also offers specific high-performance, sound-reducing products to protect the environment from machine or process-generated noise pollution.



Reference SWT 09/09 5M PG  
Copyright ©2010 CENTRIA  
Printed in U.S.A.