



Series 325X, 325G Thermal 3 1/4" Heavy Commercial Projected Flush-Face Window



CONFIGURATIONS

Project-In • Project-Out • Casement In • Casement Out • Fixed

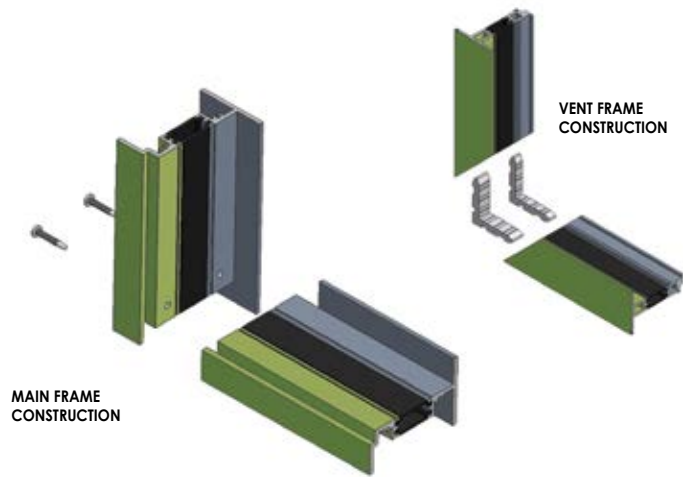
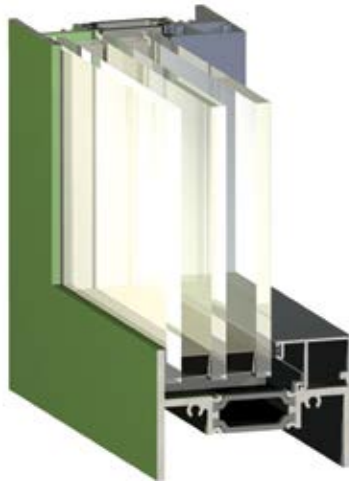
The 325X and 325G XTherm™ window series, were developed to meet the increasing energy efficiency demands of today's marketplace. The deeper strutted thermal break allows for triple glazing while also providing superior thermal separation of the framing materials. This window system is an attractive and versatile product that can be utilized on a wide range of applications from educational, to office and healthcare facilities. Offered with a complete line of thermal subframes, mullions and architectural sills, the 325X and 325G provides the complete solution for your fenestration needs.

Features

Benefits

35 mm E-Strut™ thermal isolator	Exceptional U-Value performance Dual finish capability Eliminates potential for dry shrinkage
Vertical or horizontal stacking members	Increases configuration options
Dual glazing with optional integral blinds	Improved energy savings and interior light or privacy control with low maintenance
Pressure equalization	Superior water resistance
Angle reinforced vent corners	Improves sash/vent rigidity
Wide variety of locking and operating hardware available	Permits hardware options to address specific requirements
Accessory line of subframes, mullions, and architectural sills	Allows custom designs with standard product
Anodized or painted finishes available	Multiple options to answer economic and aesthetic concerns
Screen frames of extruded aluminum alloy are available	Stronger, more durable screens
Snap-In grid available with 325G version	Removes grid from glazing pocket Easily removed for exterior glass cleaning

Series 325X, 325G Thermal 3 1/4" Heavy Commercial Projected Flush-Face Window



PERFORMANCE DATA

FIXED ARCHITECTURAL GRADE

AAMA RATING	AW-PG135-FW
AIR INFILTRATION	<.10 CFM/SF @ 6.24 PSF
WATER	NO LEAKAGE @ 15.0 PSF
CRF-FRAME	71
CRF-GLASS	81

CASEMENT ARCHITECTURAL GRADE

AAMA RATING	AW-PG95-C
AIR INFILTRATION	<.10 CFM/SF @ 6.24 PSF
WATER	NO LEAKAGE @ 15.0 PSF
CRF-FRAME	67
CRF-GLASS	77

Note: All performance data is subject to change based on testing recertification and/or revised AAMA testing protocol. Please contact EFCO for latest performance values.

325X THERMAL U-FACTORS*

CENTER OF GLASS U-FACTOR	CONFIGURATION AND SIZE					
	PO**	PO	PO Csmt**	PO Csmf	FX**	FX
	59" X 24"	60" X 66"	24" X 59"	54" X 84"	47" X 59"	65" X 77"
0.46	0.57	0.52	0.58	0.52	0.53	0.51
0.34	0.50	0.43	0.50	0.42	0.42	0.40
0.28	0.46	0.39	0.47	0.38	0.38	0.36
0.24	0.44	0.35	0.44	0.35	0.34	0.32
0.20	0.41	0.32	0.42	0.31	0.31	0.28
0.16***	0.33	0.26	0.34	0.25	0.24	0.22
0.12***	0.31	0.23	0.32	0.23	0.21	0.19

*BASED ON NFRC 100

**NFRC GATEWAY SIZE

***TRIPLE LITE INSULATED UNIT

S-325X HARDWARE CHART	BUTT HINGES	4-BAR ARMS	FRICTION ADJUSTER	KEY RELEASE LIMIT ARM	ROTOR OPERATOR*	CAM HANDLE	POLE RING CAM HANDLE	POLE RING PULL**	ACCESS CONTROLLED LOCK	LIFT LOCK
PROJECT-IN		S				S				O
PROJECT-OUT		S				S	O		O	O
CASEMENT INSWING WITH 4-BAR ARMS		S				S	O	O	O	O
CASEMENT OUTSWING WITH 4-BAR ARMS		S				S	O		O	O
CASEMENT INSWING WITH BUTT HINGES	S		O	O		S	O		O	O
CASEMENT OUTSWING WITH BUTT HINGES	S		S	O	O	S	O		O	O

Some size restrictions may apply depending on hardware selected.

* Casements requiring roto operators will be furnished with lift locks, providing vents meet minimum width requirements.

** Pole ring pull will be furnished on project-out vents when optional pole ring cam handle is selected.

O - Optional

S - Standard

Blank - N/A

S-325X GLAZING CHART		POLYCARBONATE		GLASS OR PANEL											
		3/16"	1/4"	3/16"	.200"	1/4"	1/4**	7/8"	1"	1-1/8"	1-1/4"	1-1/2"	1-3/4"	2"	
INSULATED GLASS								A	A	A		A	A	A	
DUAL GLAZING	EXTERIOR LITE							I	A	A		A	A		
	INTERIOR LITE	A	A	A	A	A	A								

* Obscure glass thickness

** Laminated glass thickness

A - Available glazing option
I - Internal blinds can be used with this type of dual glazing
Blank - N/A

S-325G GLAZING CHART		POLYCARBONATE		GLASS OR PANEL													
		3/16"	1/4"	3/16"	.200"	1/4"	1/4**	5/8"	3/4"	7/8"	1"	1-1/8"	1-1/4"	1-1/2"	1-3/4"	2"	
INSULATED GLASS										A	A	A	A	A	A	A	
DUAL GLAZING	EXTERIOR LITE							A	A		A		A				
	INTERIOR LITE	A	A	A	A	A	A										



Series 325X, 325G Thermal 3 1/4" Heavy Commercial Projected Flush-Face Window

Main Frame Construction

The frame is constructed from .125" nominal material wall thickness aluminum of 6063-T6 alloy with a depth of 3 1/4". An equal leg frame is standard. Corners are of screw spline construction and back sealed with a small-joint seam sealer. See Illustration 1.

Vent Frame Construction

The 3 1/4" deep vent consists of tubular aluminum members with .125" nominal material wall thickness of 6063-T6 alloy. Vent corners are mitered, angle reinforced, crimped, cold epoxy welded and back sealed with a small-joint seam sealer. Vents present a flush appearance with the frame in the closed position. See Illustration 2.

Weather Stripping

All vents are dual weather-stripped with a dual-durometer Santoprene® gasket. Exterior gasket is intentionally omitted at vent bottom rail for project-out vents and at vent top rail for project-in vents allowing air to pressure equalize the void between the vent and frame. Each vent utilizes the pressure equalization technique for superior water resistance.

Screens

Screen frames are extruded 6063-T6 aluminum alloy frames. Full width hinged wickets or fully hinged screens are available. 18 x 16 mesh screens are available in fiberglass and in .011" diameter aluminum. 18 x 18 mesh screens are available in .009" diameter stainless steel.

Thermal Barrier

All frames and vents are thermally isolated with two thermal struts which consist of glass reinforced polyamide nylon, mechanically crimped in raceways extruded in the exterior and interior extrusions. See Illustration 3.

Hardware

Locking cam handles, access controlled locks, and keepers are of cast white bronze in a US25D finish. 4-bar arms are fabricated from stainless steel meeting AAMA 904.1 requirements. Butt hinges are fabricated from extruded aluminum of 6063-T6 alloy with stainless steel pins. See Hardware Chart for available hardware types.

Glazing

Windows are inside glazed with an extruded aluminum snap-in glazing bead. Glazing of 3/16" to 2" can be accommodated. Dual glazing is also available in 1/8", 3/16", and 1/4" glass. Between the glass aluminum blinds are available with dual glazed windows. See the Glazing Chart for the exact size.

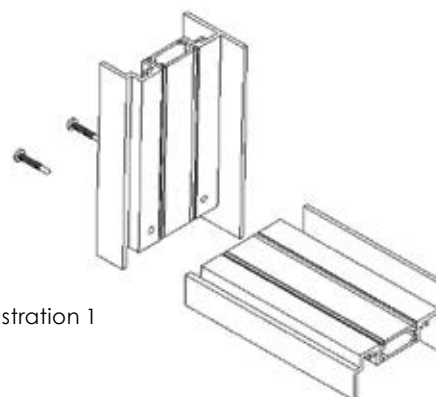


Illustration 1

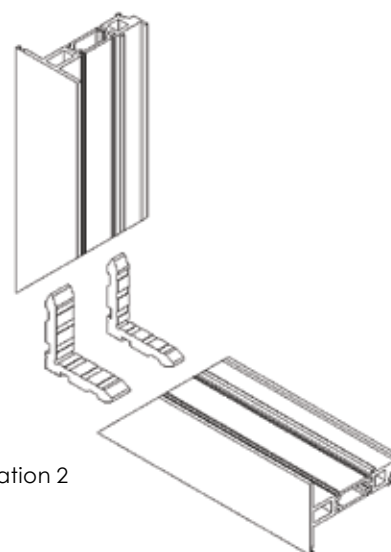


Illustration 2

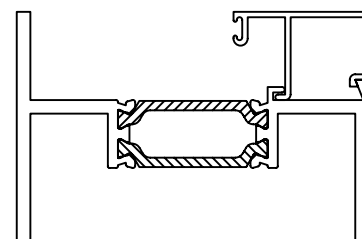


Illustration 3