

Series 433

2" x 4 1/2" Thermal Triple Set™ Storefront Framing



CONFIGURATIONS

Screw Spline • Shear Block

System 433 is a thermally broken storefront framing system. Glass planes can be placed in an outside set, center set or inside set configuration, which gives you design flexibility to meet any multi-plane glazing specification. Series 433 is compatible with all EFCO entrances.

Features

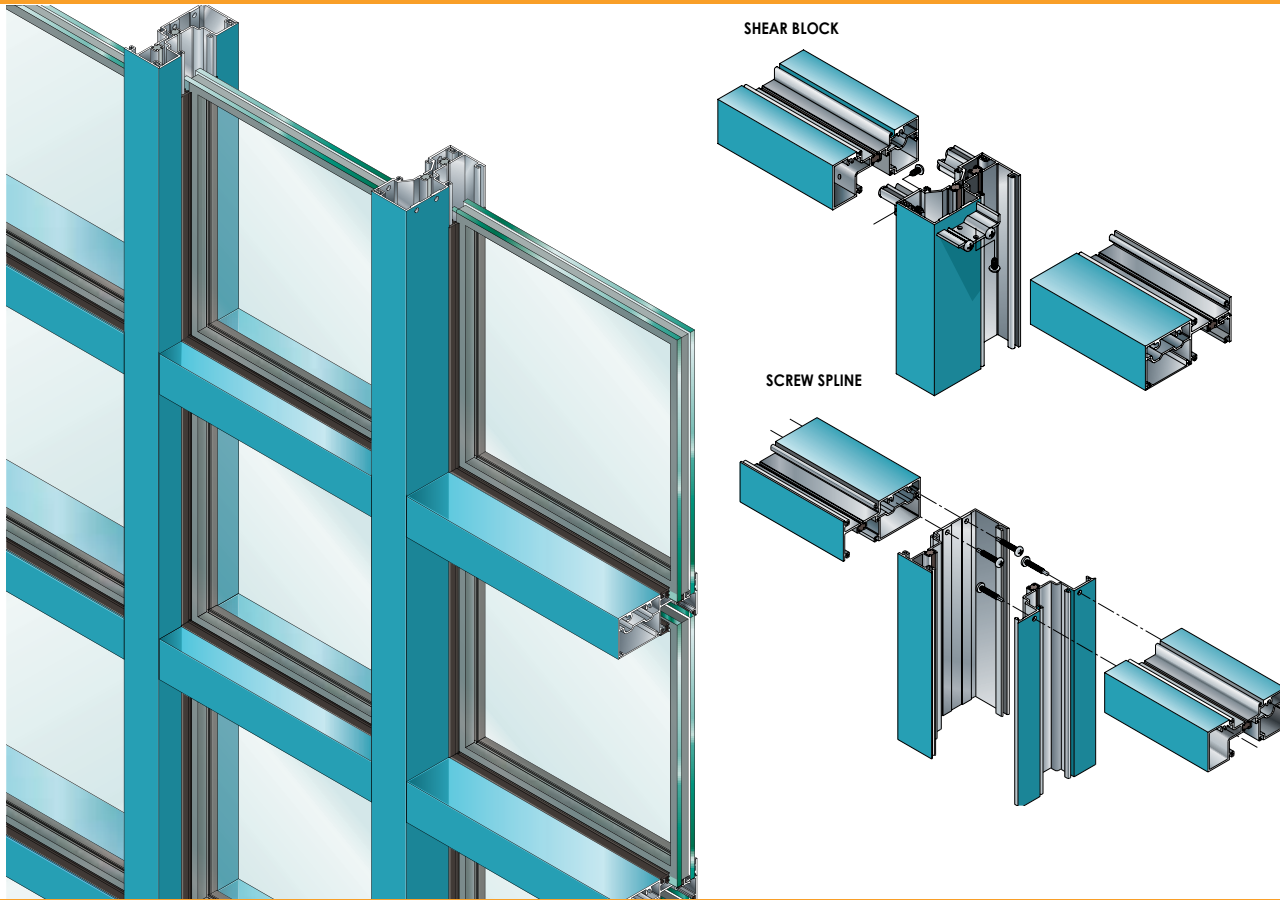
Benefits

Thermally broken frames	Enhanced thermal performance
Three glass planes	Create shadow box effect, match vision of architect
All joints and horizontal mullions are square cut	Facilitates shop fabrication of "ladders" that can be transported as a unit to job sites for quick installation
Door frames will accommodate glass in three planes	Allows quick fabrication in the field
90° and 135° inside and outside corner mullions	Glass plane effect can continue at door frames
All joint fasteners are #12 screws	Accommodates multifaceted elevations
Steel is available for mullions as stock steel bars or custom fabricated steel shapes	Utilizes a common mullion with standard verticals attached to reduce number of dies
Accommodates up to 1 1/16" glazing	Strengthens system to allow transportation of ladders without damage to joinery system
Inside or outside glazing in all glass planes	Simplifies fabrication
Uniform glazing gasket is used for exterior and interior	Eliminates the cost of customer steel fabrication
Stock length or fabricated	Allows system performance enhancements
Anodized or painted finishes available	Energy savings options
	Allows flexibility of construction methods
	Allows optimized use of gasket
	Simplifies ordering and installation
	Provides customers with an option
	Multiple options to answer economic and aesthetic concerns



Series 433

2" x 4 1/2" Thermal Triple Set™ Storefront Framing



PERFORMANCE DATA

OUTSIDE SET/OUTSIDE GLAZED SCREW SPLINE CONFIGURATION
 AIR INFILTRATION <.06 CFM/SF @ 6.24 PSF
 WATER NO LEAKAGE @ 10.0 PSF
 STRUCTURAL visit MyEFCO at www.efcocorp.com
 CRF-FRAME (1503-98) 66^F
 CRF-GLASS (1503-98) 69^F

OUTSIDE SET/OUTSIDE GLAZED SHEAR BLOCK CONFIGURATION
 AIR INFILTRATION <.06 CFM/SF @ 6.24 PSF
 WATER NO LEAKAGE @ 10.0 PSF
 STRUCTURAL visit MyEFCO at www.efcocorp.com
 CRF-FRAME (1503-98) 66^{A, E}
 CRF-GLASS (1503-98) 69^{A, E}

INSIDE SET/OUTSIDE GLAZED SCREW SPLINE CONFIGURATION
 AIR INFILTRATION <.06 CFM/SF @ 6.24 PSF
 WATER NO LEAKAGE @ 10.0 PSF
 STRUCTURAL visit MyEFCO at www.efcocorp.com
 CRF-FRAME (1503-98) 66^F
 CRF-GLASS (1503-98) 69^F

INSIDE SET/OUTSIDE GLAZED SHEAR BLOCK CONFIGURATION
 AIR INFILTRATION <.06 CFM/SF @ 6.24 PSF
 WATER NO LEAKAGE @ 10.0 PSF
 STRUCTURAL visit MyEFCO at www.efcocorp.com
 CRF-FRAME (1503-98) 66^{A, E}
 CRF-GLASS (1503-98) 69^{A, E}

A = Estimated values and/or designations
 B = Non-standard size or configuration
 C = Dual glazed
 D = 1" Insulated - 1/4" clear, 1/2" air, 1/4" clear
 E = 1" Insulated - 1/4" clear (Low Emissivity), 1/2" air, 1/4" clear
 F = 1" Insulated - 1/4" clear (Low Emissivity), 1/2" argon, 1/4" clear
 G = 1" Insulated - 1/4" clear, 1/2" air, 1/4" clear (Low Emissivity)

GLAZING

SYSTEM 433 CAN BE INSIDE OR OUTSIDE GLAZED WITH EXTRUDED ALUMINUM, SNAP-IN GLAZING BEAD. GLASS IS "DRY GLAZED" WITH TOP LOAD GASKET. GLAZING OF 3/16" TO 1-1/16" INFILL PANELS ARE ACCOMMODATED. SEE GLAZING CHART BELOW FOR EXACT SIZE.

433 THERMAL U-FACTORS*		
CENTER OF GLASS U-FACTOR	CONFIGURATION AND SIZE	
	FX/FX** 78 3/4" X 78 3/4"	FX/FX 120" X 120"
0.46	0.56	0.51
0.34	0.46	0.41
0.30	0.43	0.37
0.24	0.39	0.32
0.20	0.35	0.28

* Based on NFRC 100
 **NFRC Gateway size

SYSTEM 433 GLAZING CHART	POLYCARBONATE		GLASS OR PANEL													
	3/16"	1/4"	5/16"	3/16"	1/4"	1/4"***	5/16"	7/16"	1/2"	9/16"	5/8"	3/4"	7/8"	15/16"	1"	1-1/16"
MONOLITHIC GLASS	C	C	C	C	C	C	C	C	C	C	C	C	C	C	C	C
INSULATED GLASS													C	C	A	C

*Obscure glass thickness
 ***Laminated glass thickness
 A-Available glazing option
 C-Adaptor and/or gasket required
 Blank - N/A



Series 433 2" x 4 1/2" Thermal Triple Set™ Storefront Framing

Frame Construction

Members are extruded 6063-T6 aluminum alloy with a nominal wall thickness of .080". Corner construction employs a screw spline or shear block method and utilize #12 fasteners. Frame members have a face sight line of 2" and frame depth of 4 1/2". See Illustration 1 & 2 for system joinery.

Glass planes can be placed in an outside set, center set, or inside set configuration. Both inside and outside glazing is available. 90° and 135° inside and outside corners are available.

Door Frames

Series 433 offers integral entrance frames in shear block construction. Members are nominally .080" in thickness. A standard entrance header is available as well as an entrance header that is designed for use with concealed overhead closers. Transom lite glazing is accommodated through either applied glass stops and glazing beads or extruded in place glazing pockets. Door stops are available as extruded in place or screw applied configurations.

Weather Stripping

All entrance frames are weather-stripped with bulb gasket.

Thermal Barrier

All frames and vents are thermally broken using the latest technology in two part, high density polyurethane.

Glazing

Series 433 can be inside or outside glazed with extruded aluminum, snap-in glazing bead. Glass is "dry glazed" with top load gasket. Glazing of 3/16" to 1 1/16" infill panels are accommodated. See Glazing Chart for exact size.

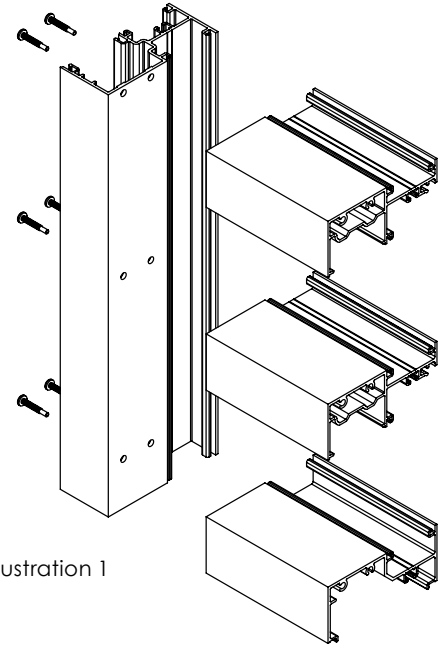


Illustration 1

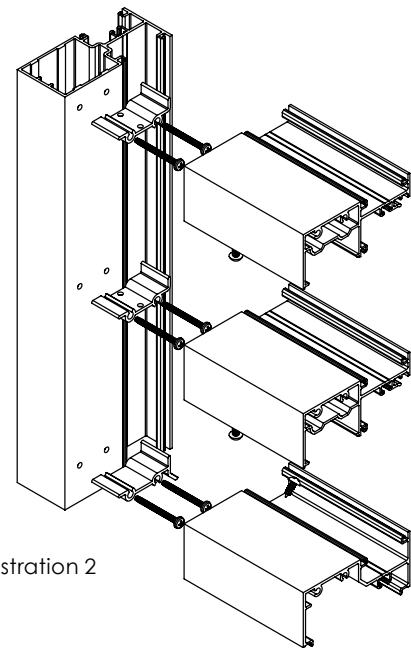
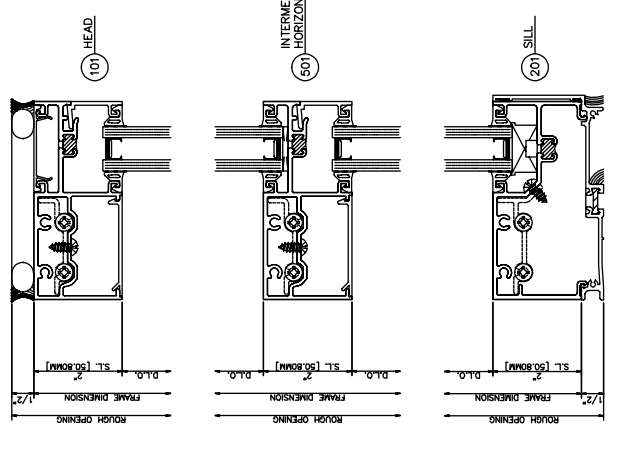
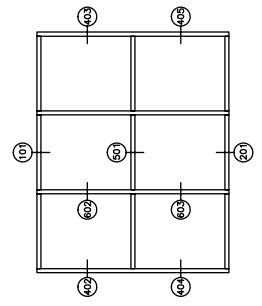
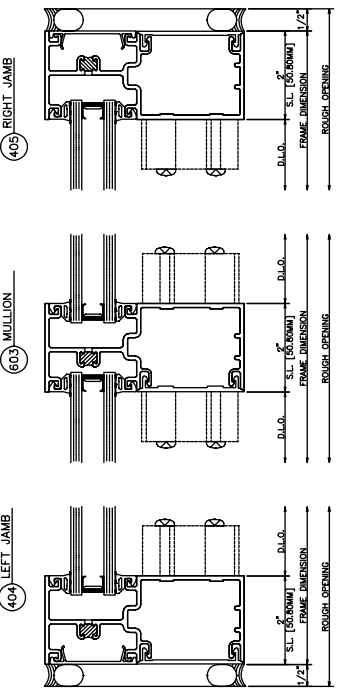
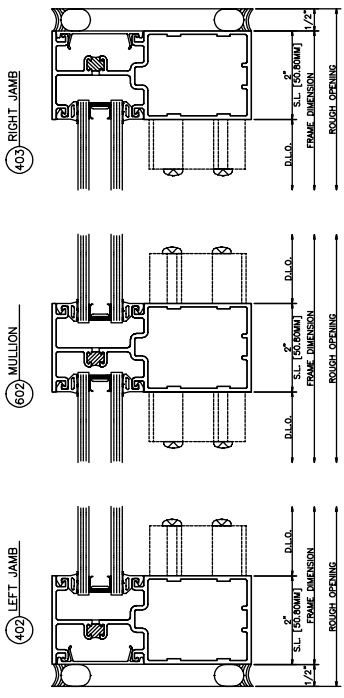
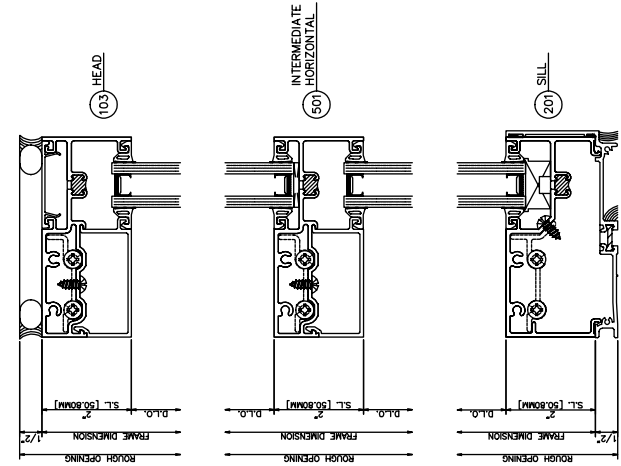
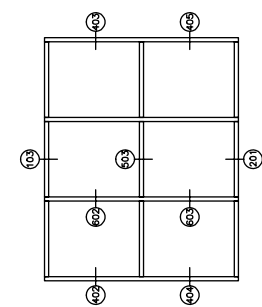
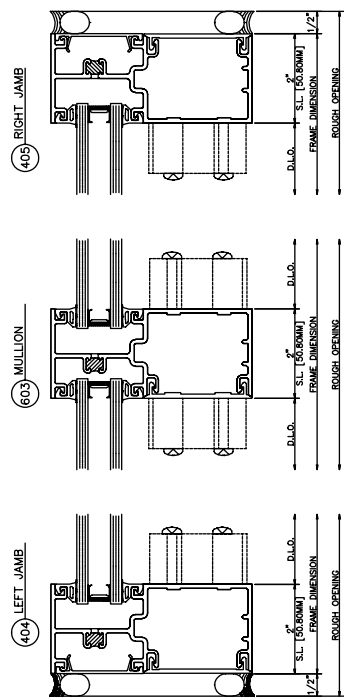
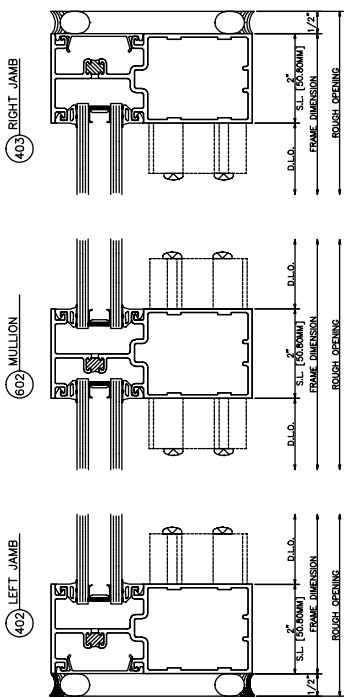


Illustration 2



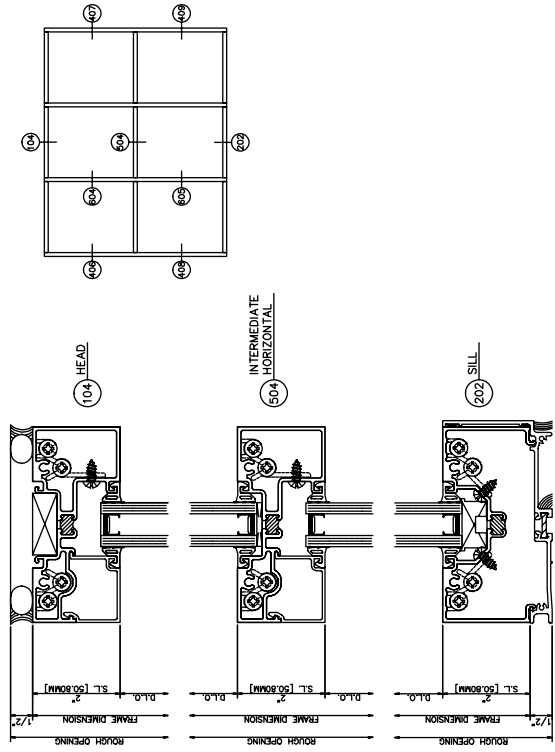
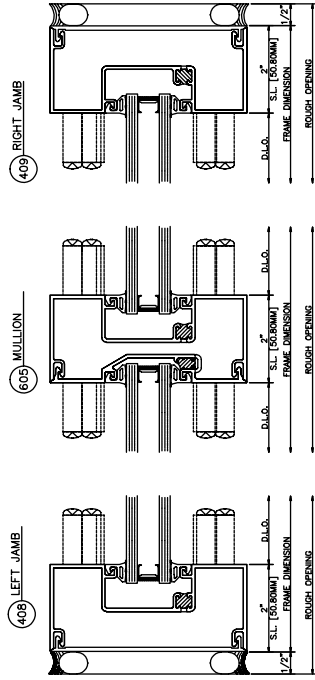
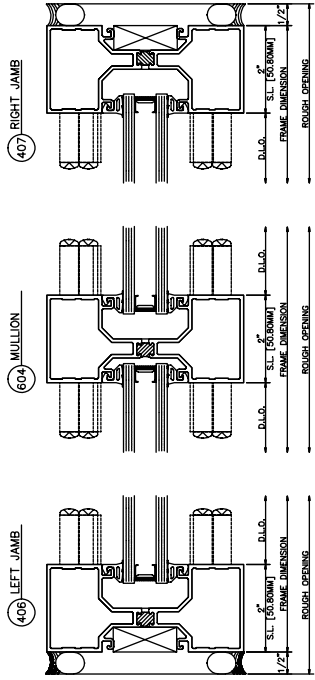
433 Shear Block
Outside Glazed • Inside Set



433 Shear Block
Inside Glazed • Inside Set

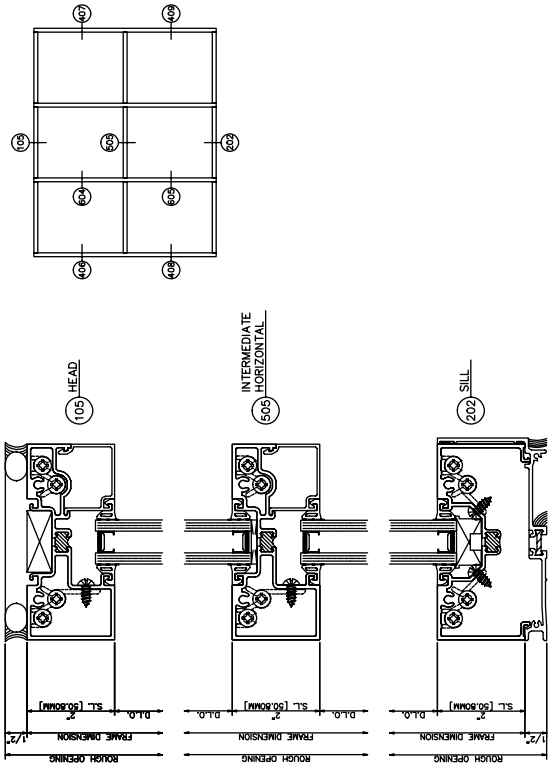
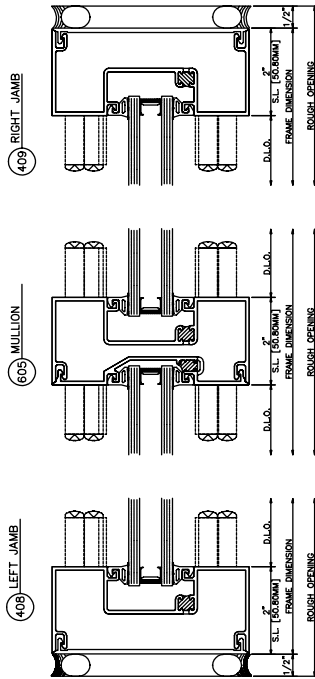
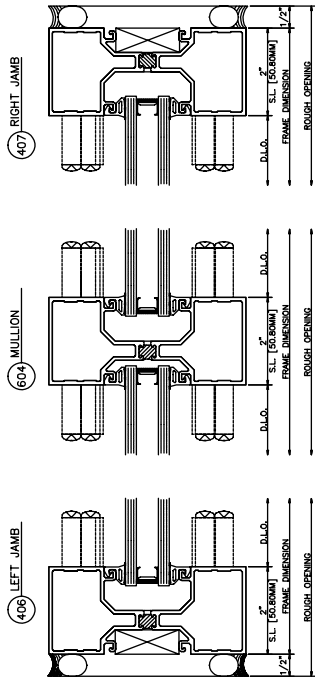
433 Shear Block

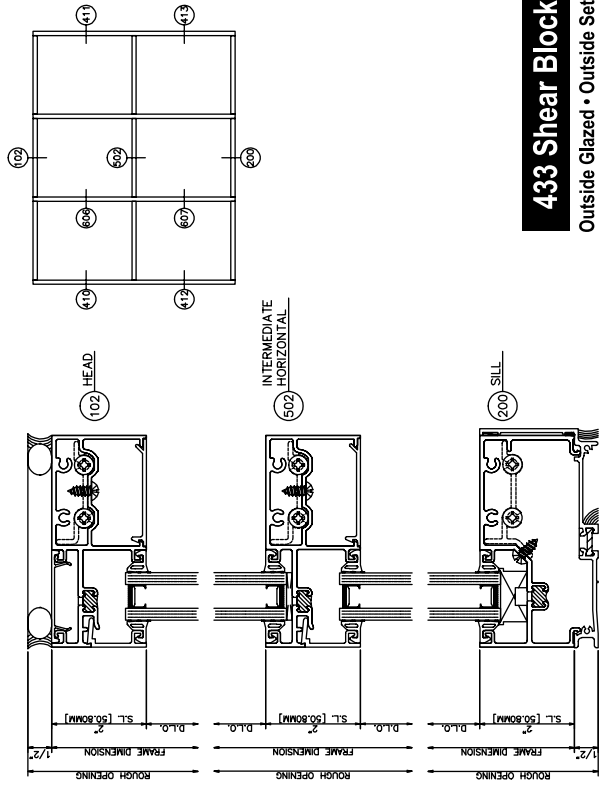
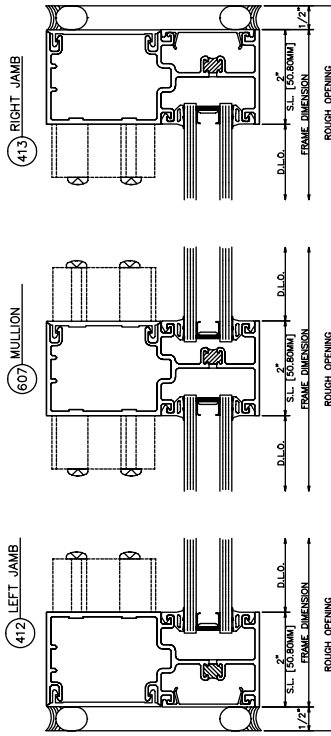
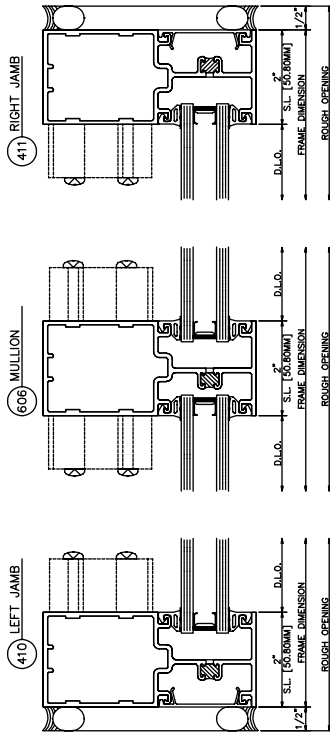
Outside Glazed • Center Set



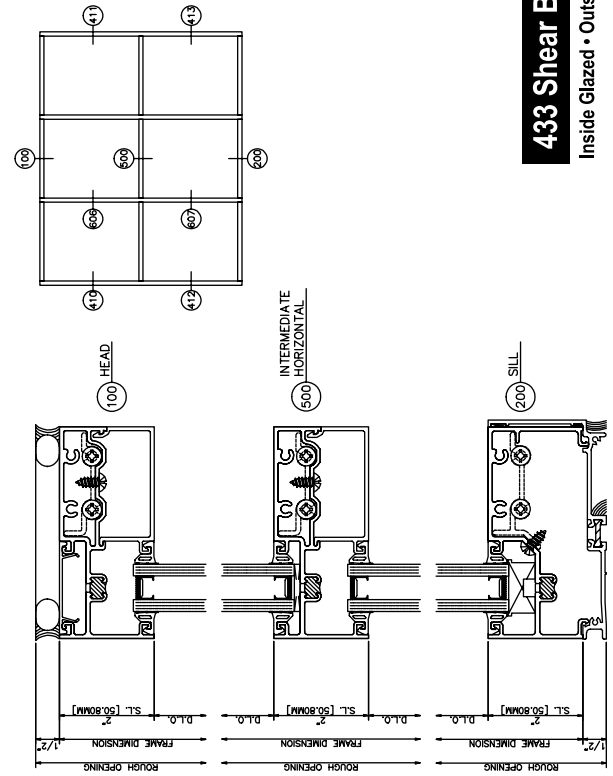
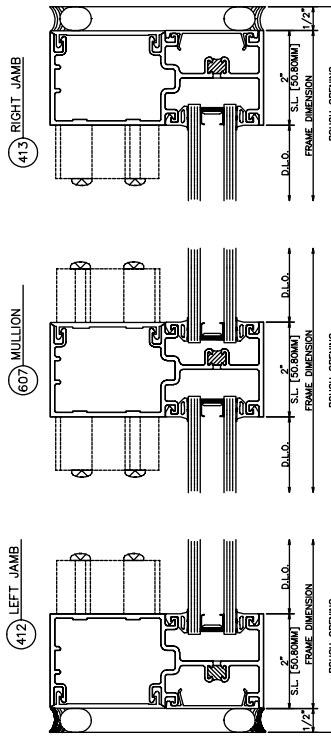
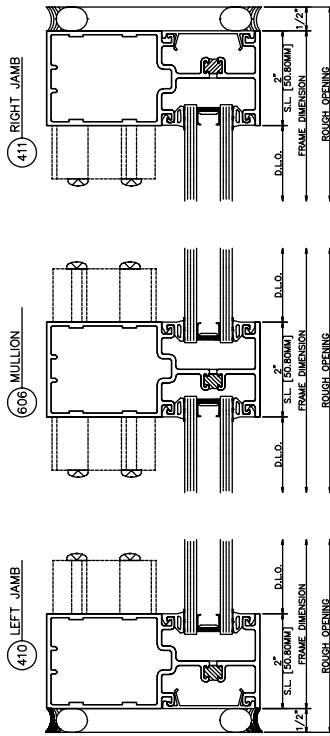
433 Shear Block

Inside Glazed • Center Set





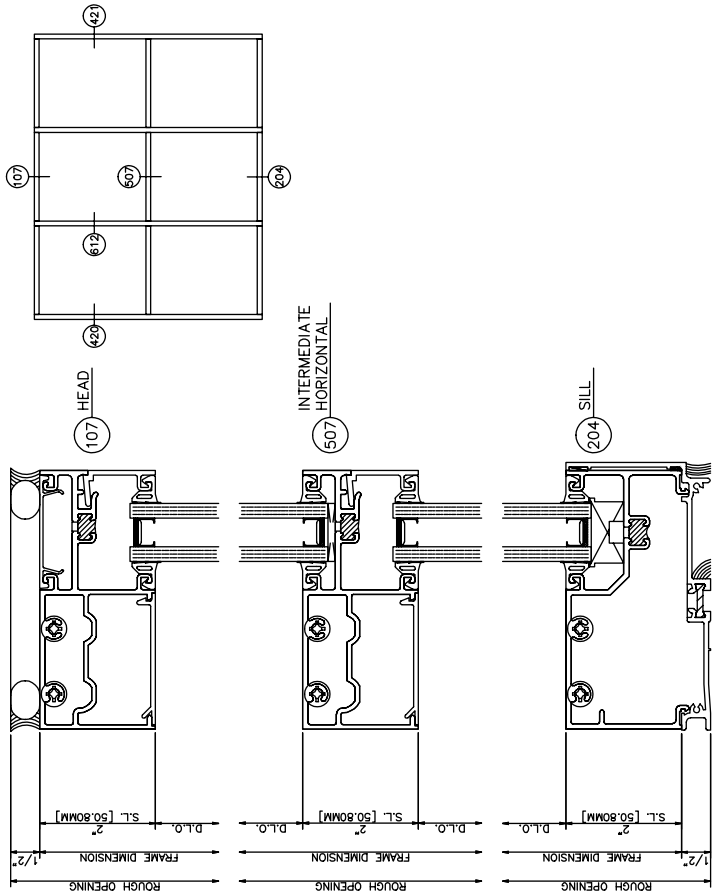
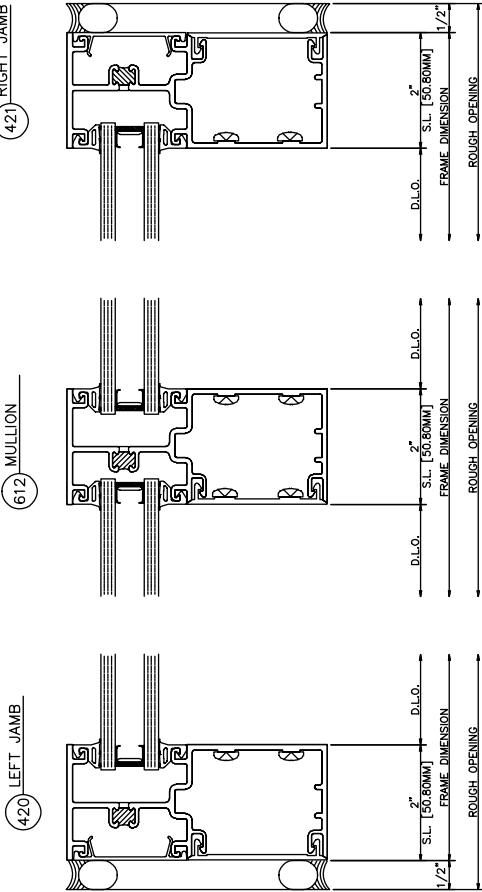
433 Shear Block
Outside Glazed • Outside Set



433 Shear Block
Inside Glazed • Outside Set

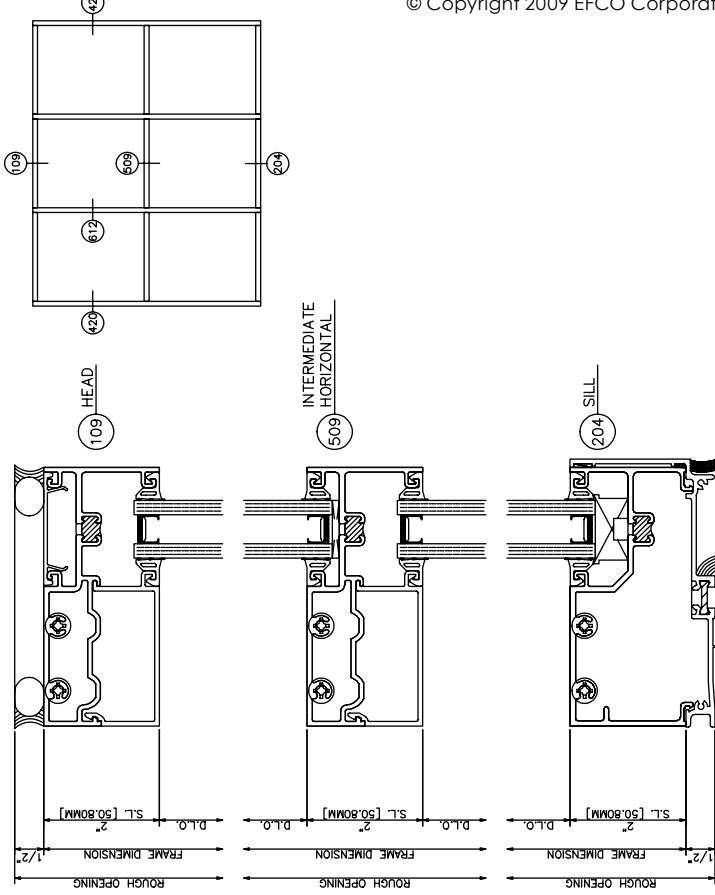
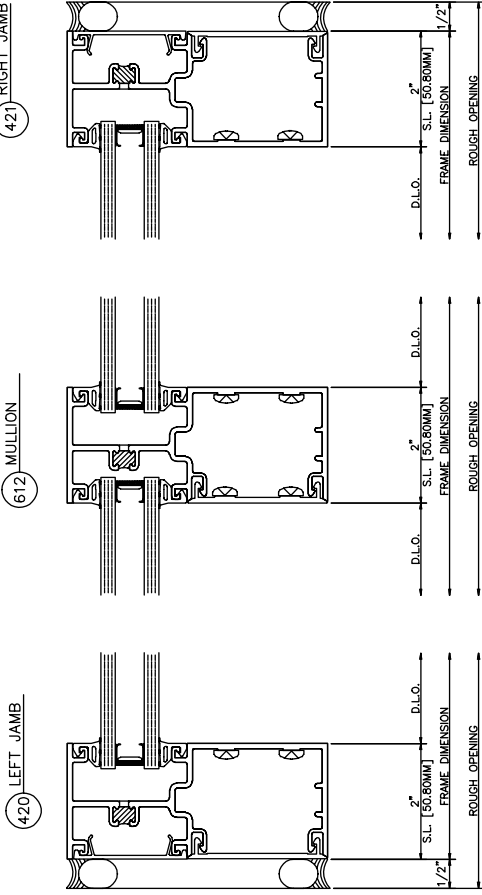
433 Screw Spline

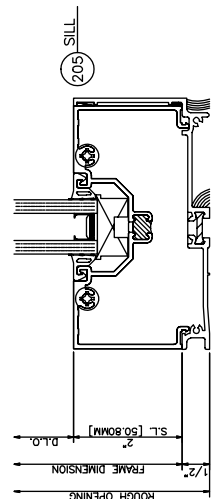
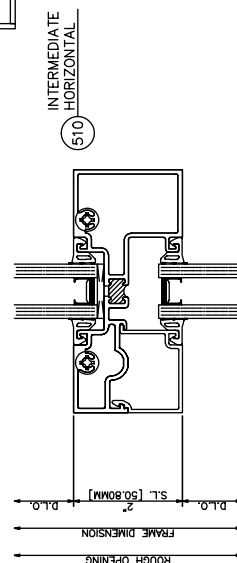
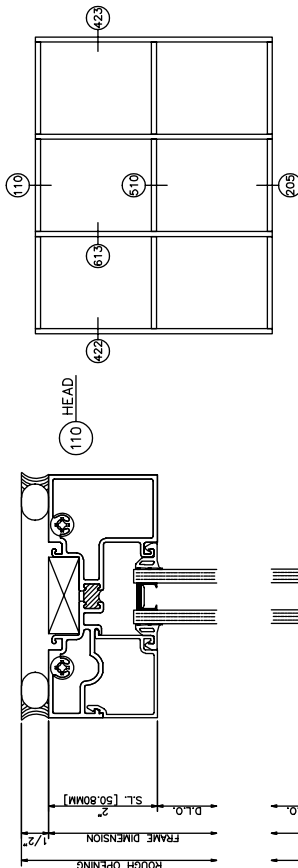
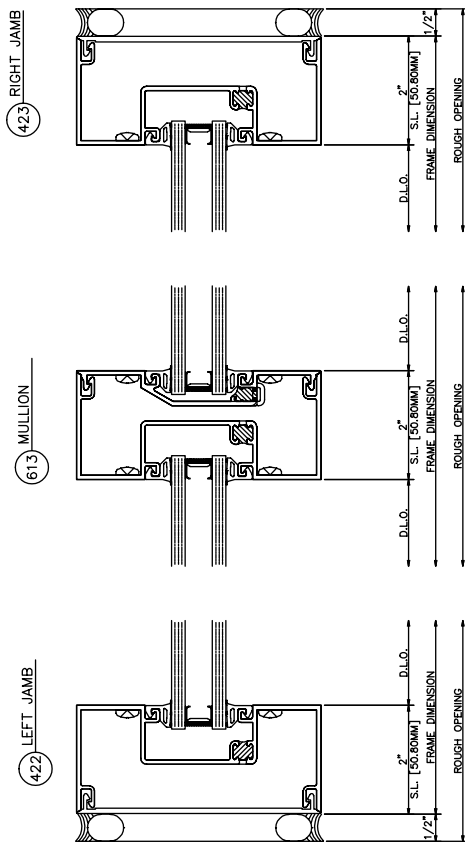
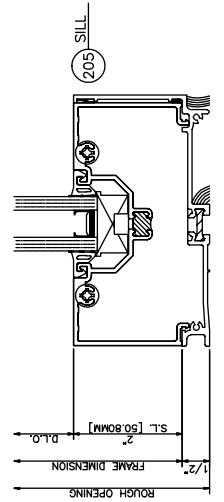
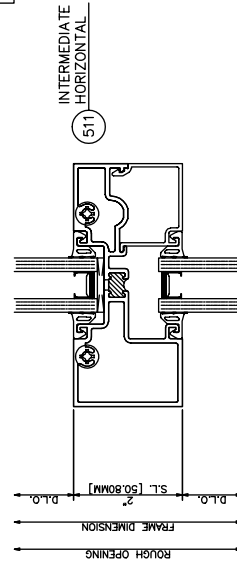
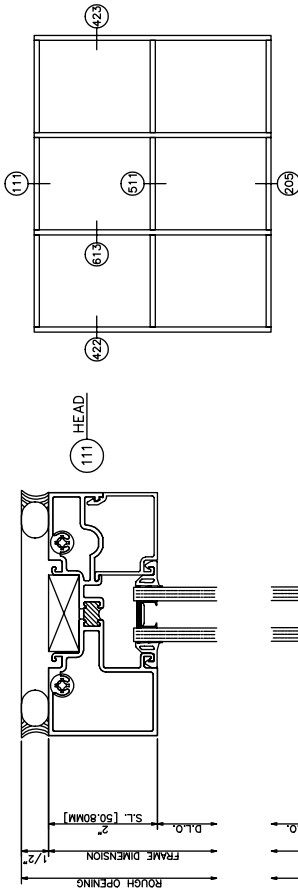
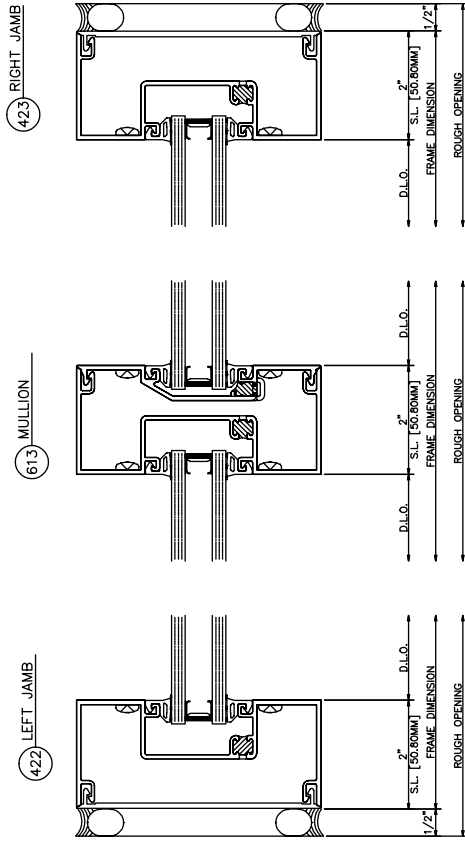
Inside Glazed • Inside Set



433 Screw Spline

Outside Glazed • Inside Set



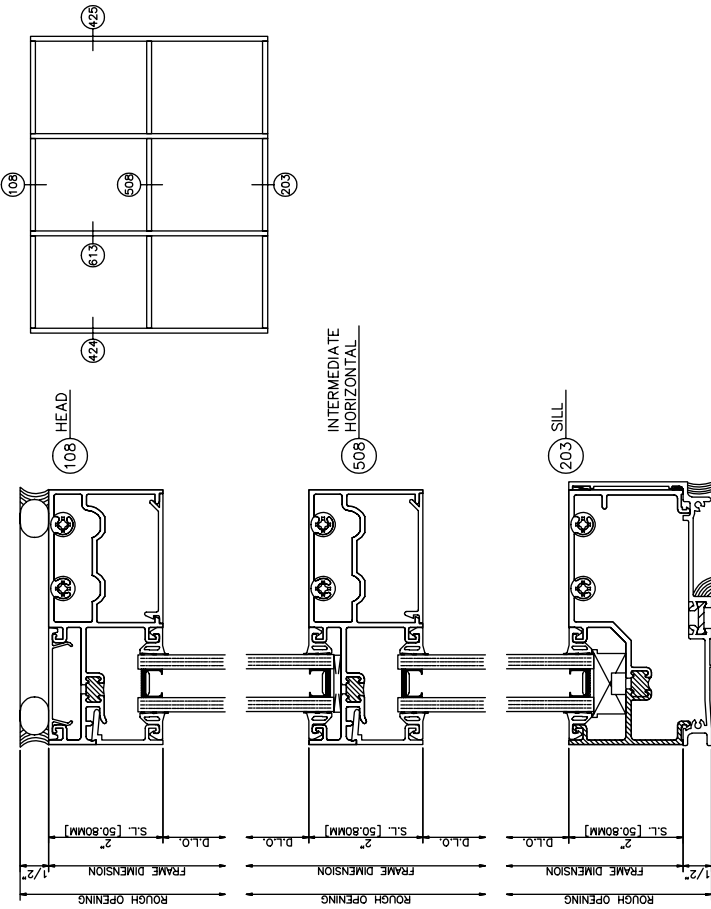
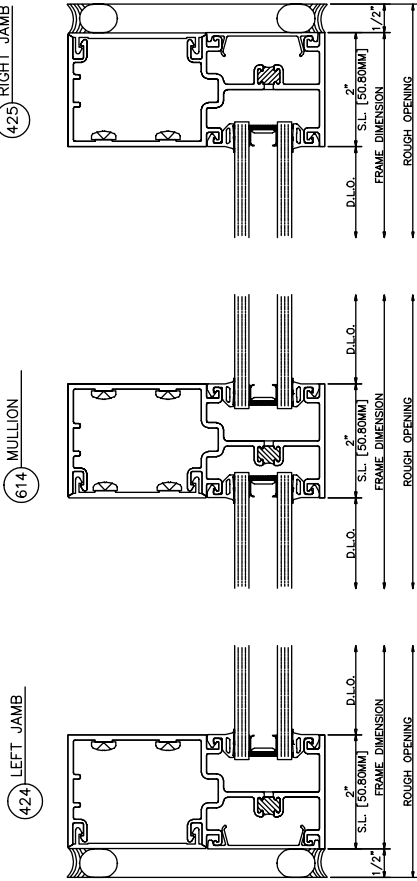


433 Screw Spine
Inside Glazed • Center Set

433 Screw Spine
Outside Glazed • Center Set

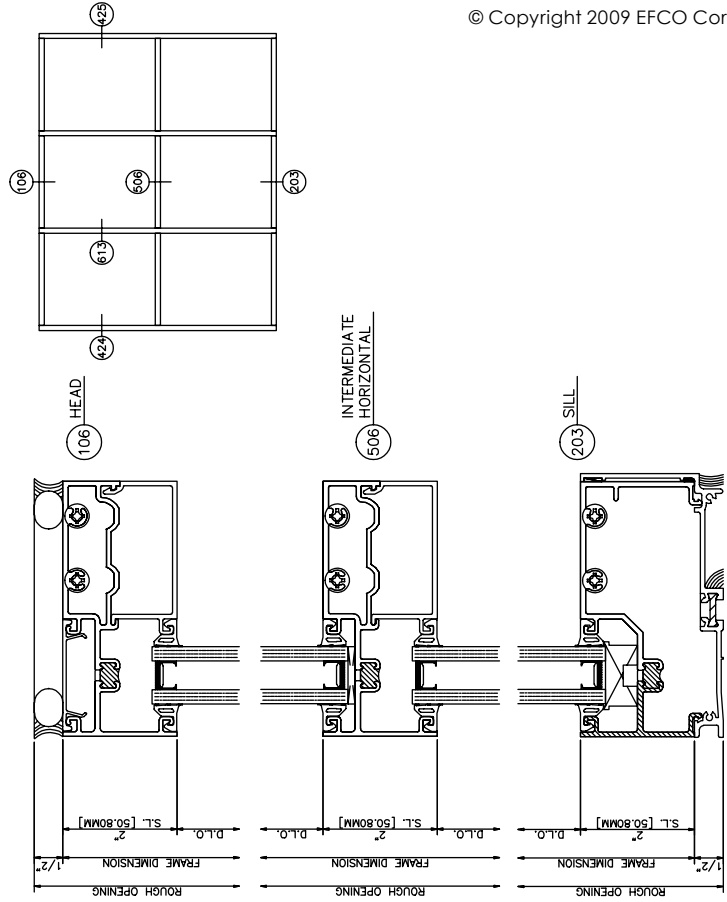
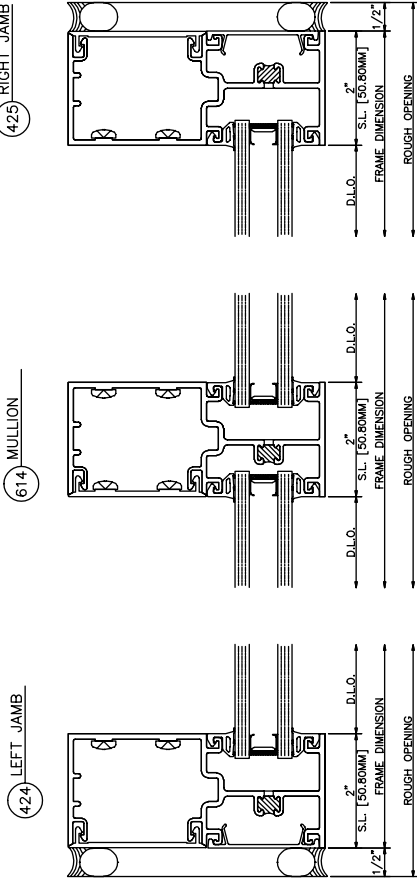
433 Screw Spline

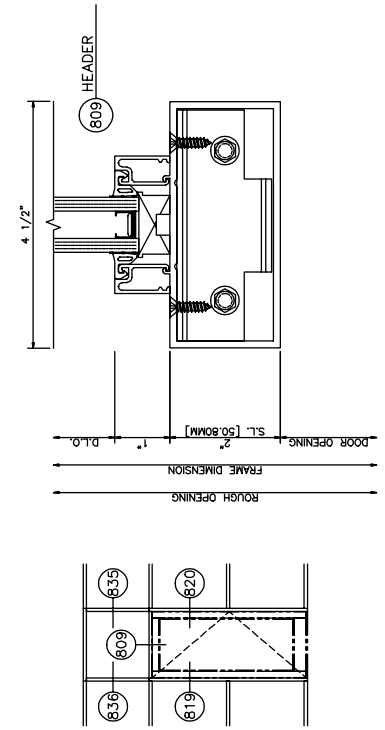
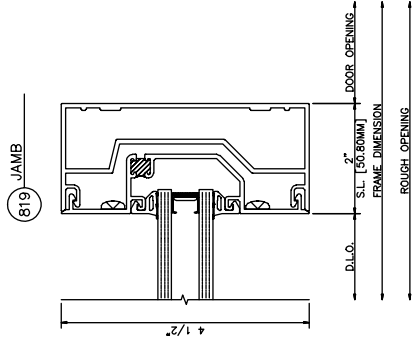
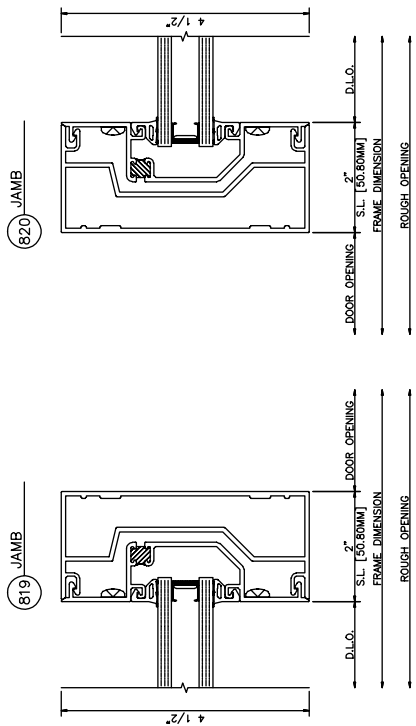
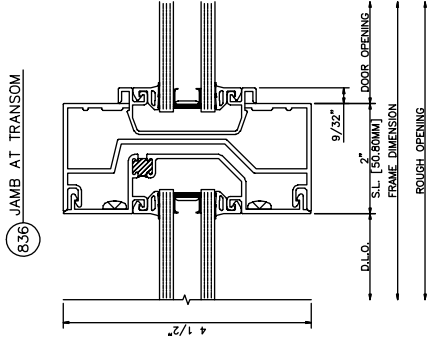
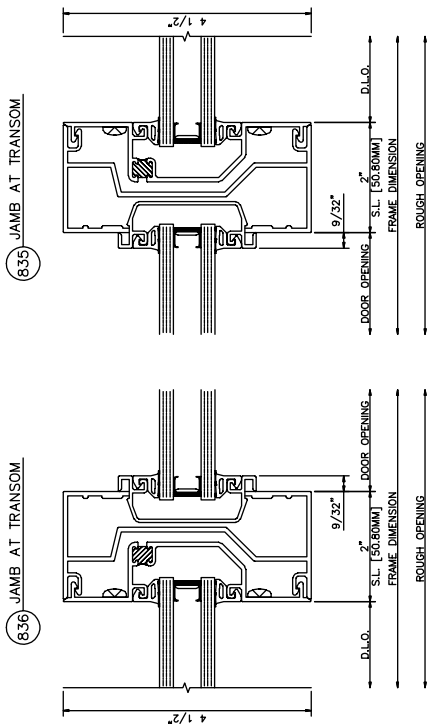
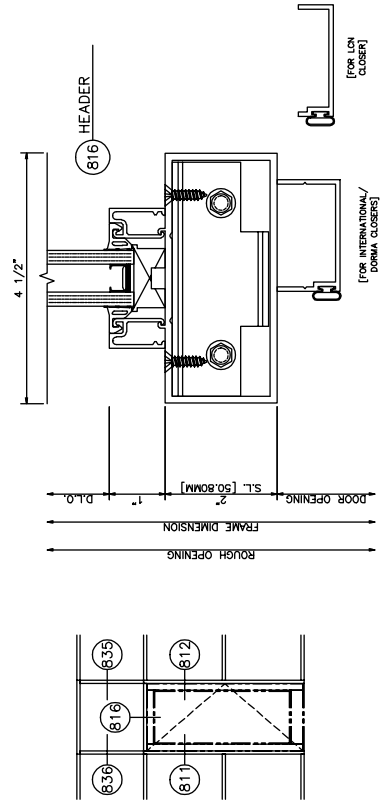
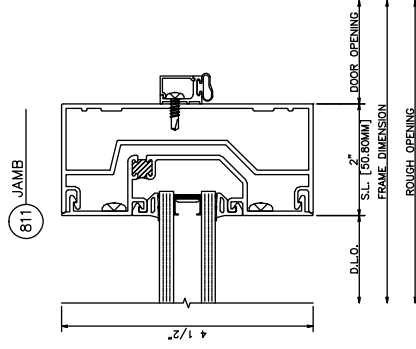
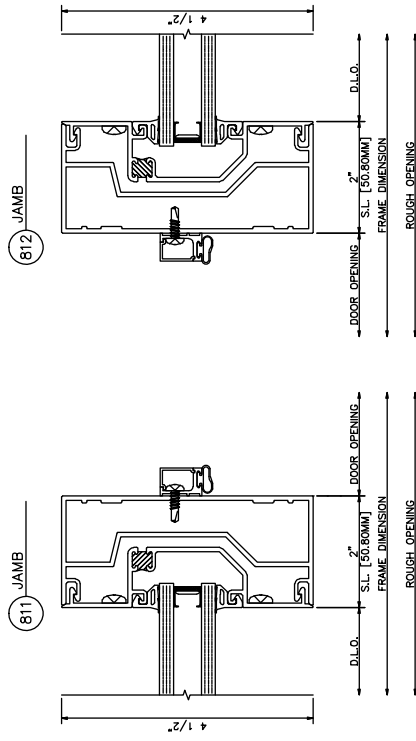
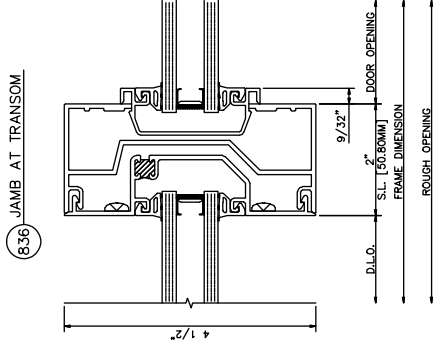
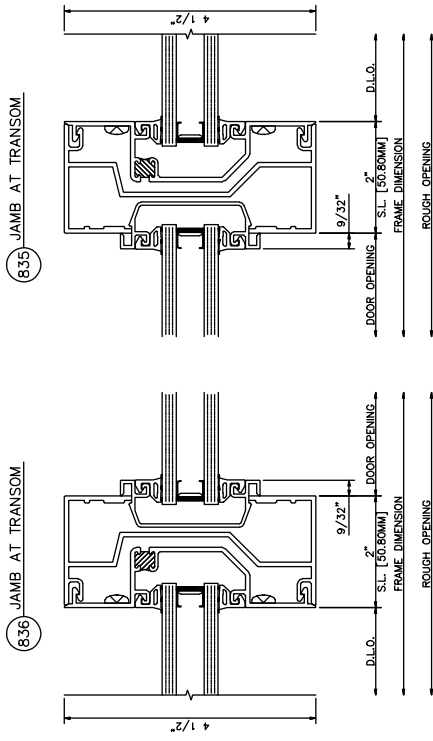
Outside Glazed • Outside Set



433 Screw Spline

Inside Glazed • Outside Set





433 Door Frame with Transom

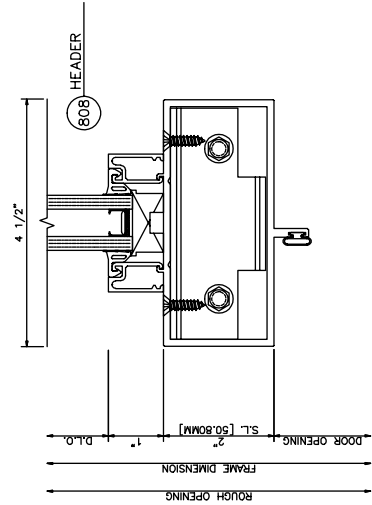
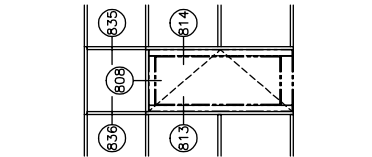
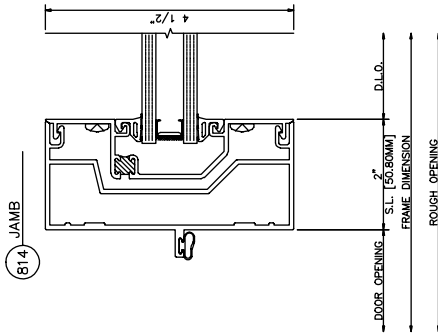
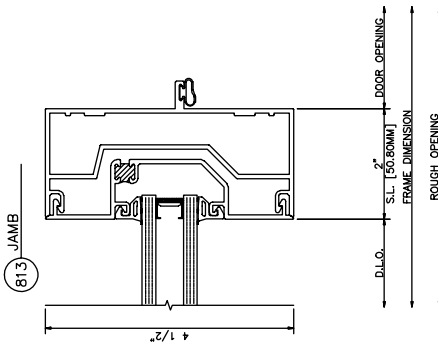
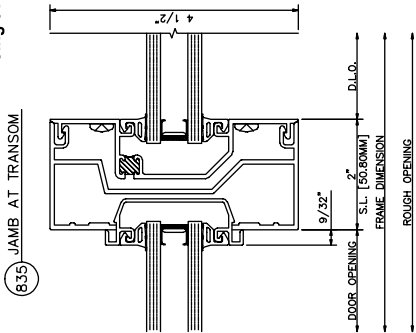
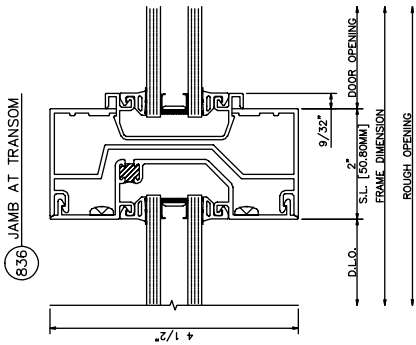
Single Acting • Center Set

433 Door Frame with Transom

Single Acting w/C.O.C. • Center Set

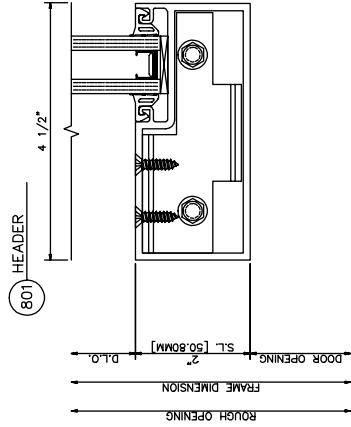
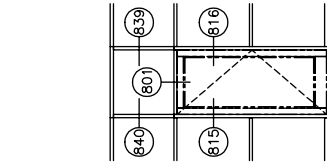
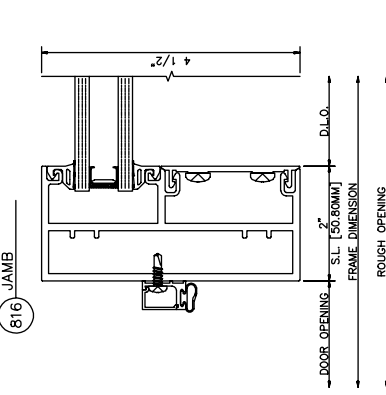
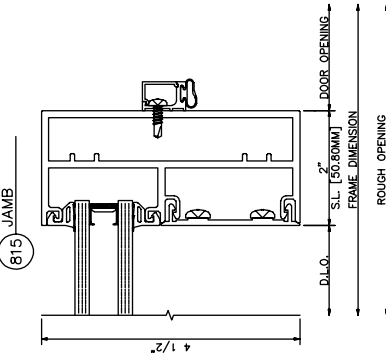
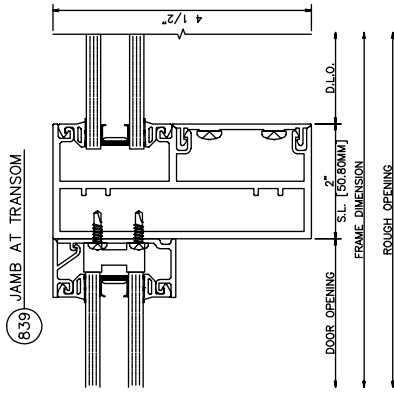
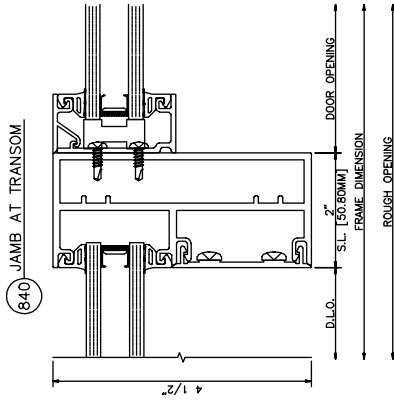
433 Door Frame with Transom

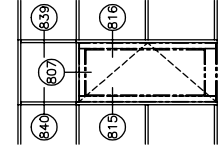
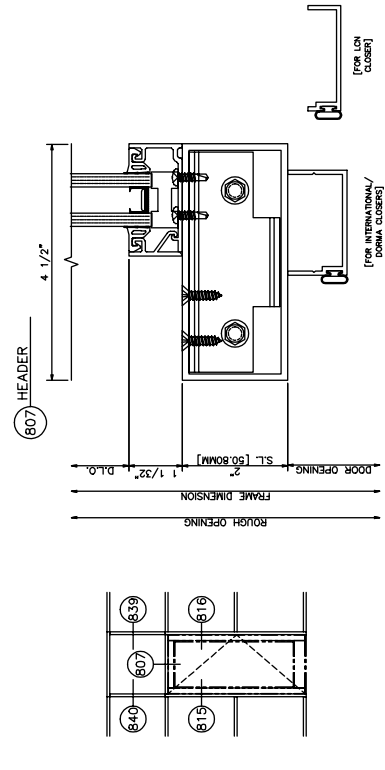
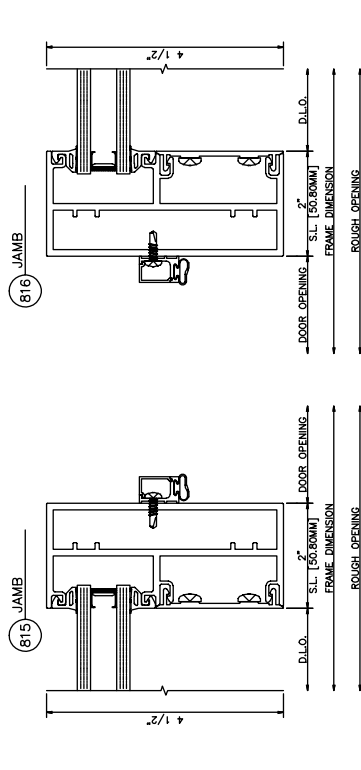
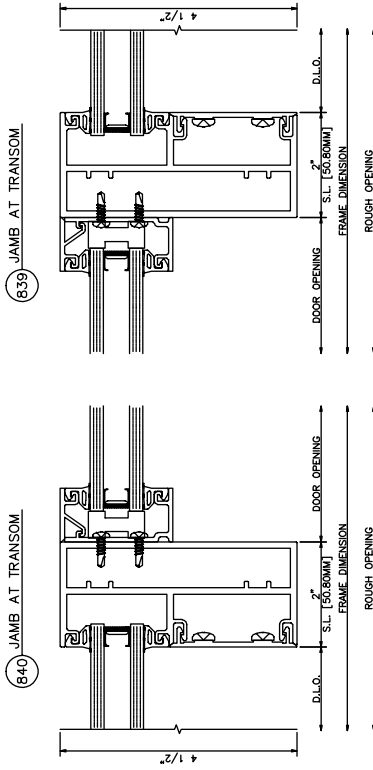
Single Acting • Center Set



433 Door Frame with Transom

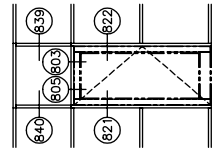
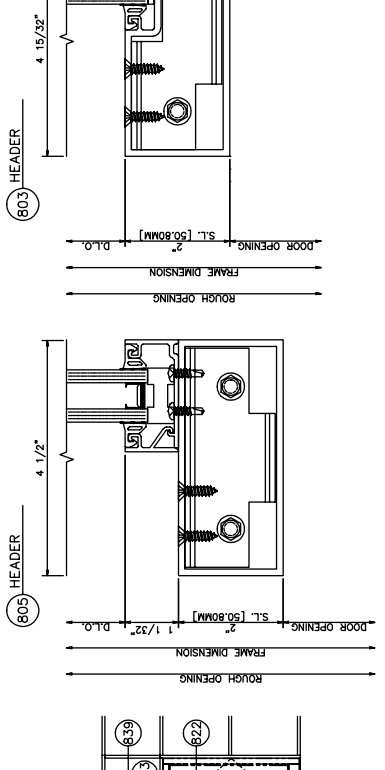
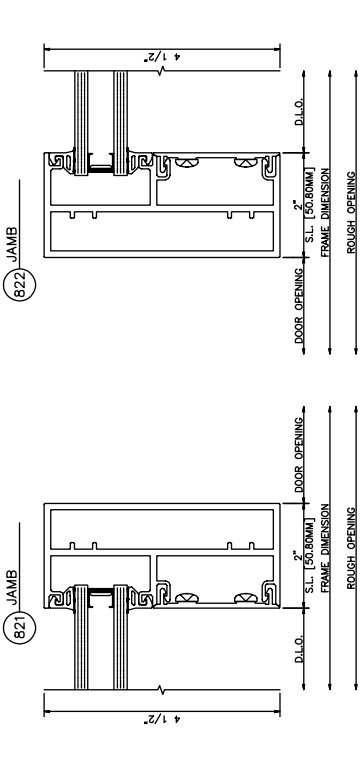
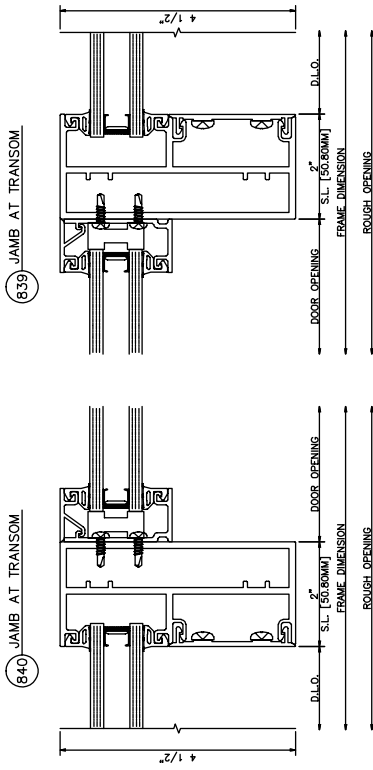
Single Acting • Inside Set





433 Door Frame with Transom

Single Acting w/C.O.C. • Inside Set

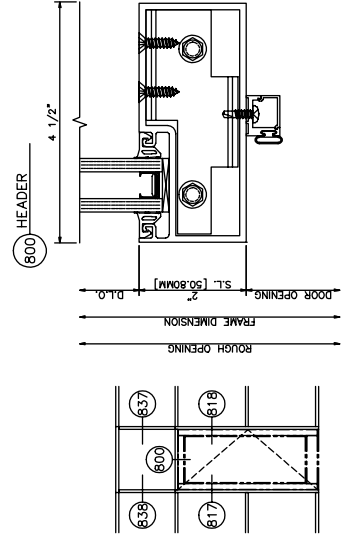
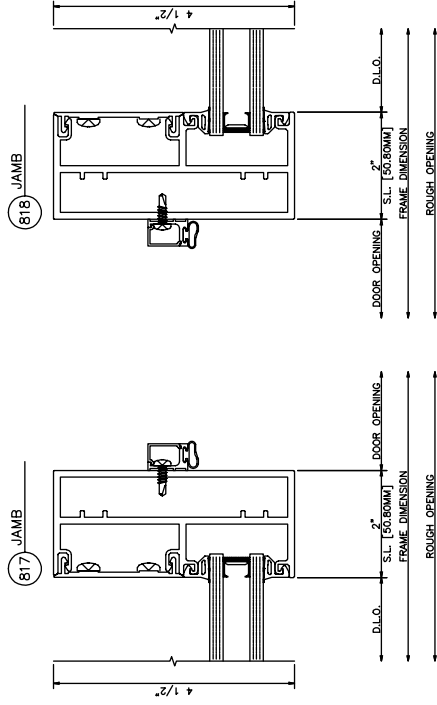
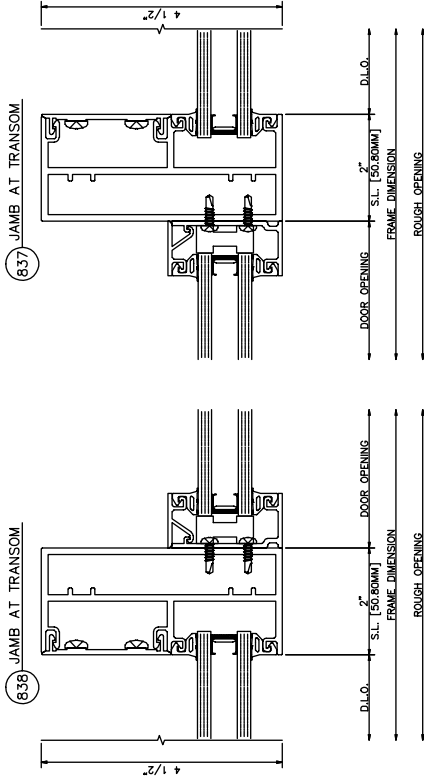


433 Door Frame with Transom

Dual Acting • Inside Set

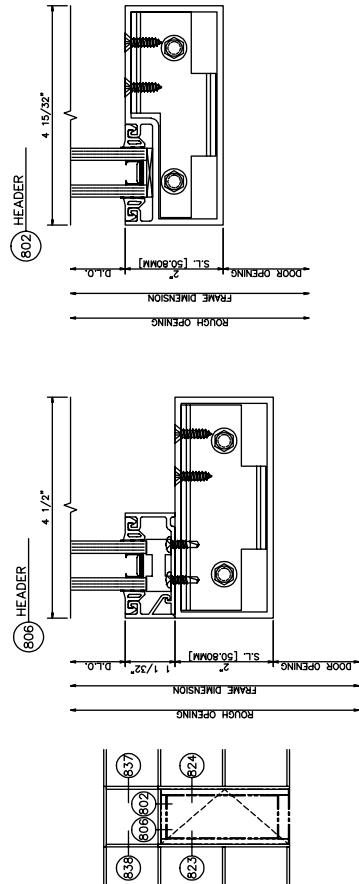
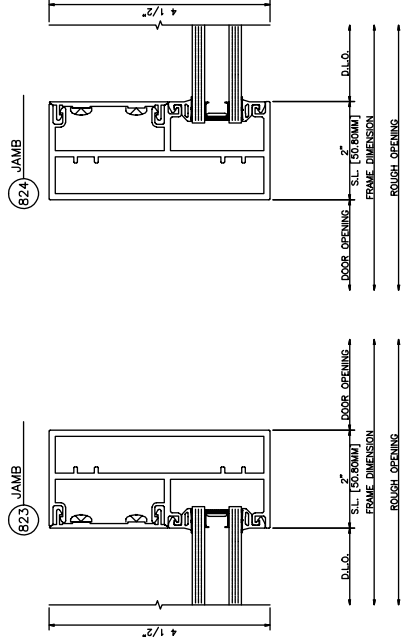
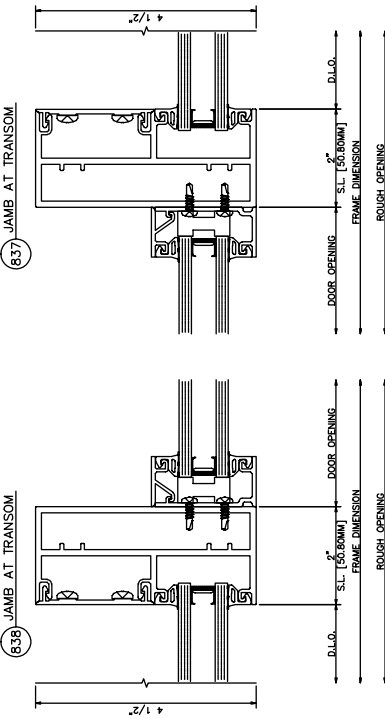
433 Door Frame with Transom

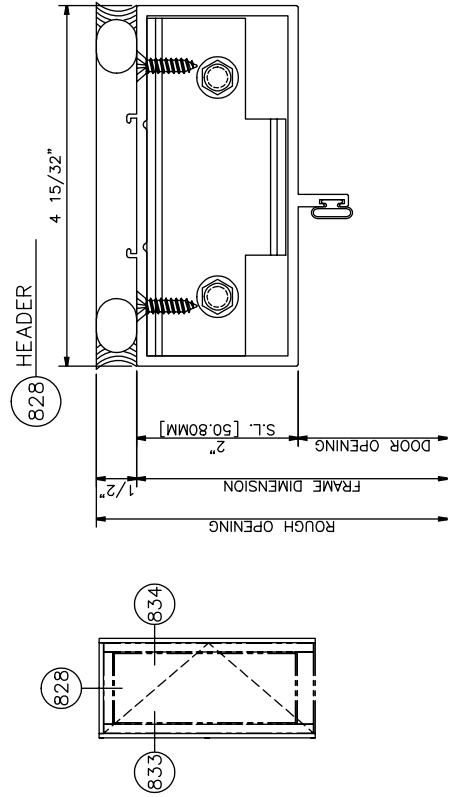
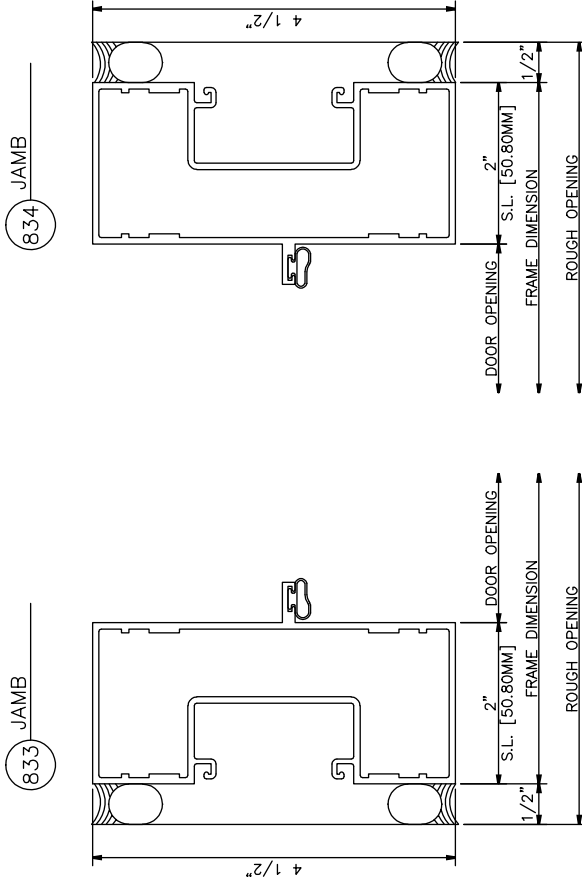
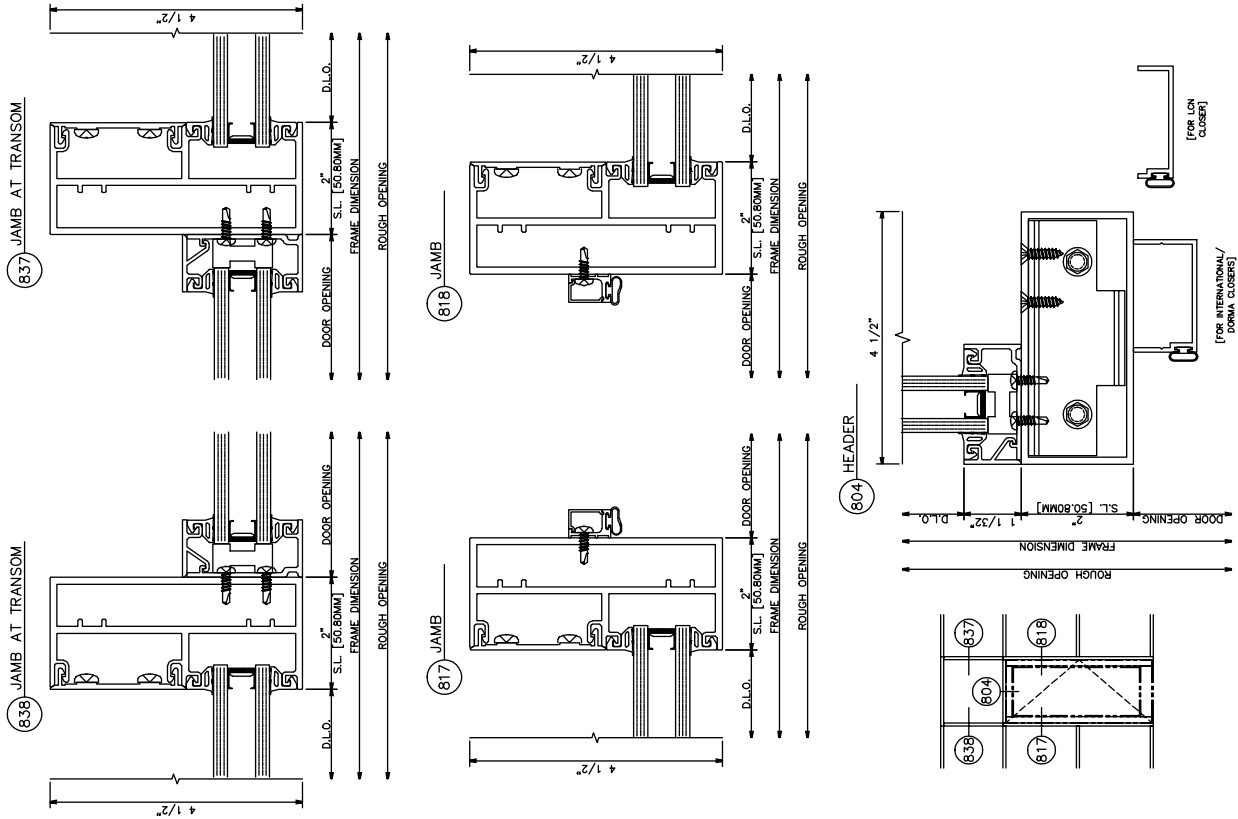
Single Acting • Outside Set



433 Door Frame with Transom

Dual Acting • Outside Set





433 Door Frame with Transom

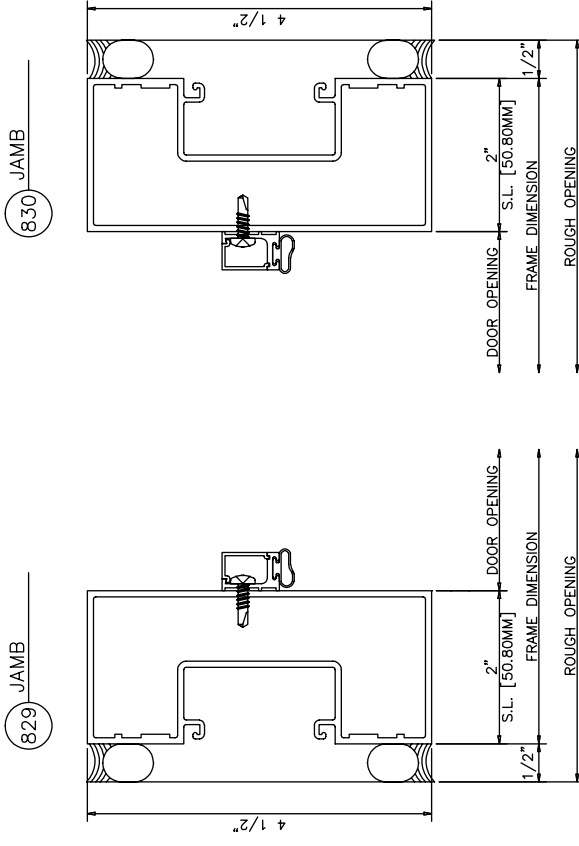
Single Acting w/C.O.C. • Outside Set

433 Door Frame with Transom

Dual Acting • Center Set

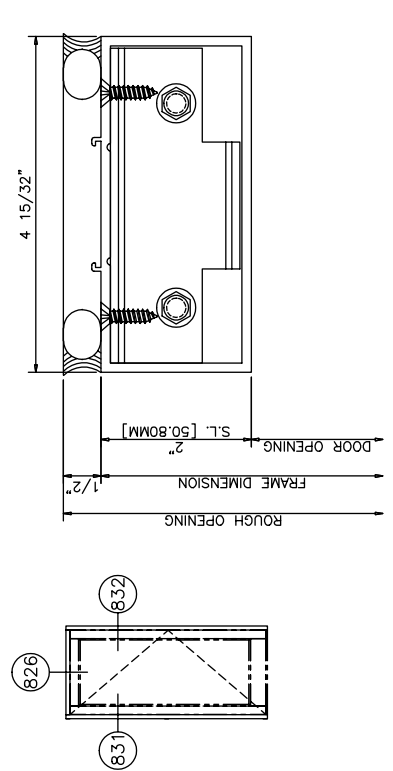
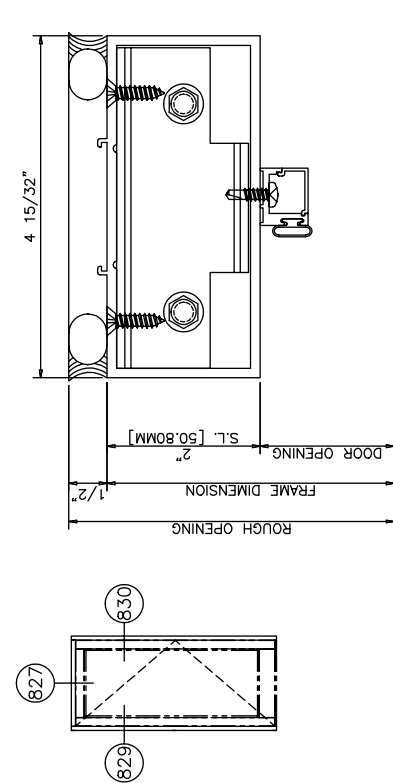
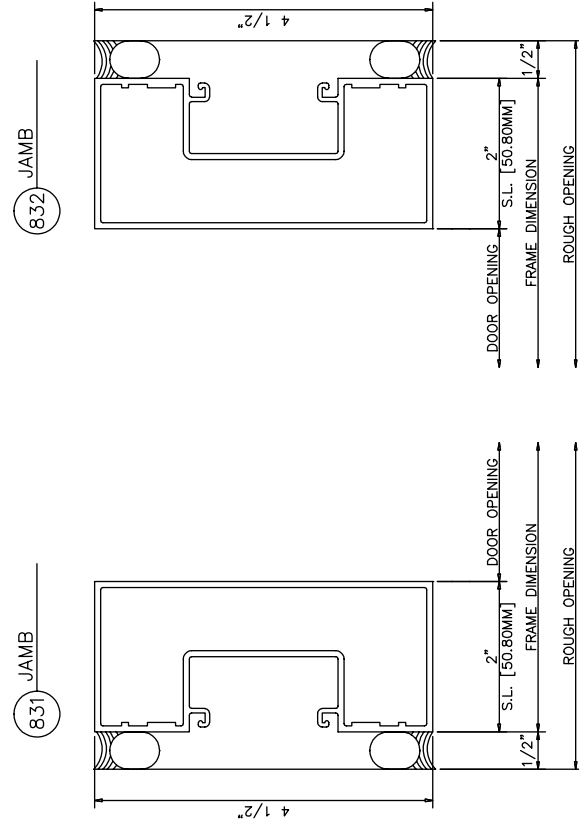
433 Door Frame Without Transom

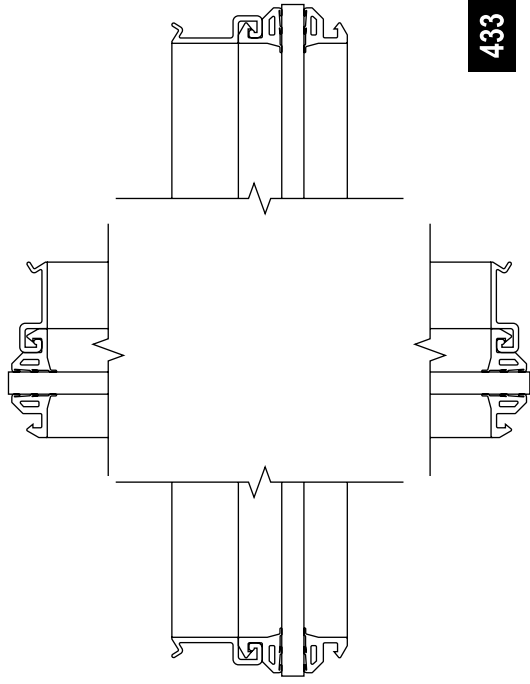
Single Acting with Applied Stops



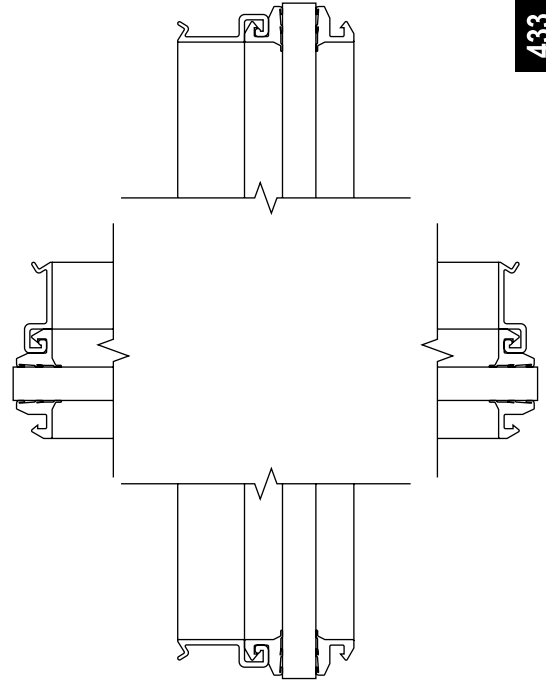
433 Door Frame Without Transom

Dual Acting

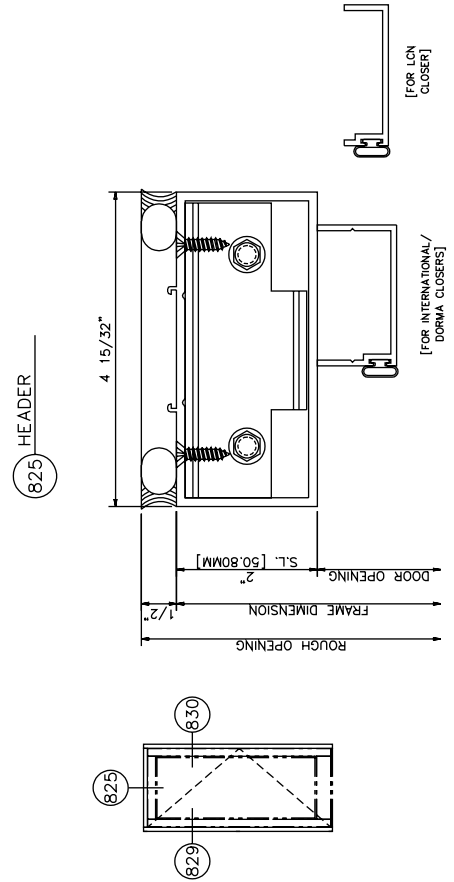
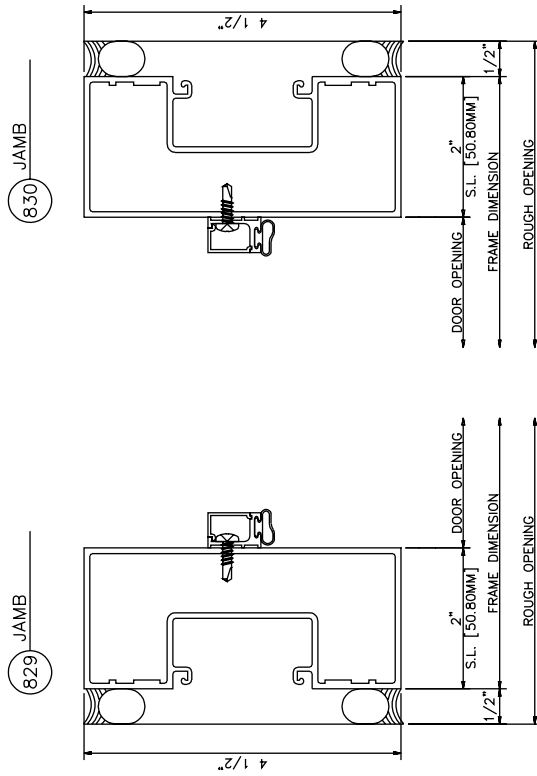




433 1/4" Glazing



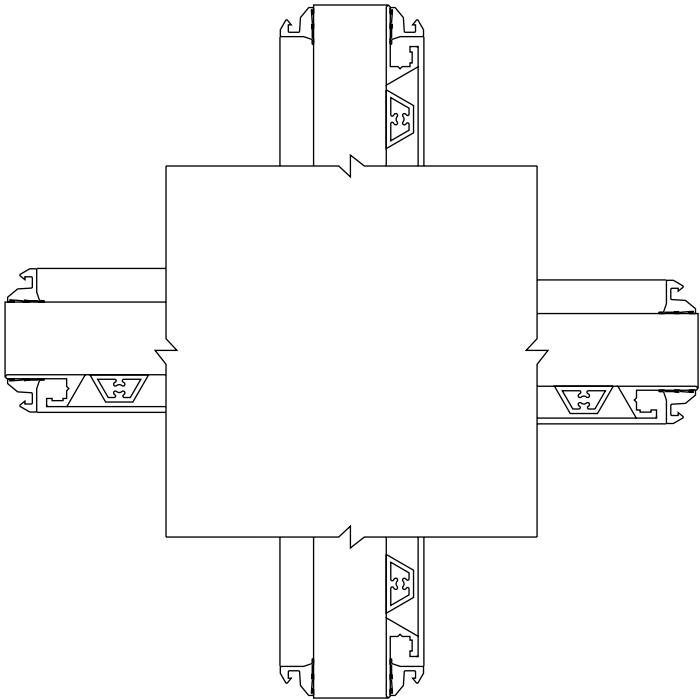
433 3/8" Glazing



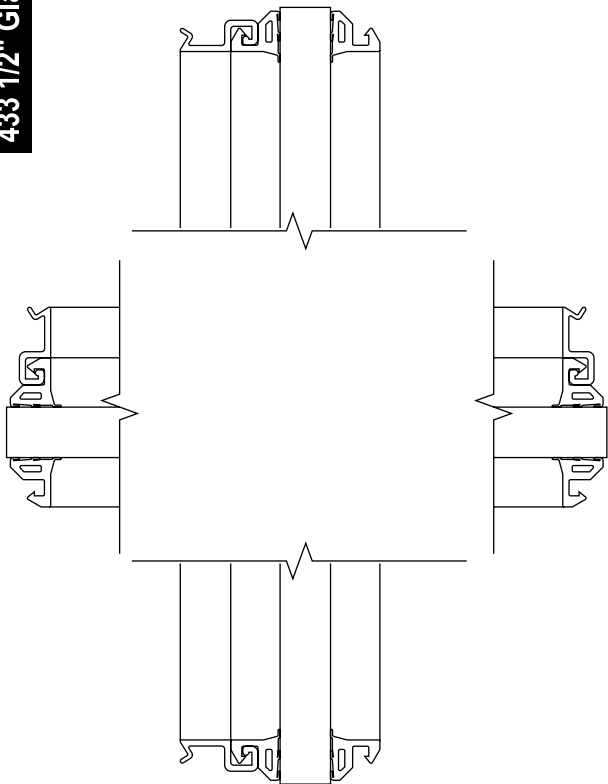
433 Door Frame Without Transom

Single Acting

433 1" Glazing



433 1/2" Glazing



433 5/8" Glazing

