



# Ductile Iron Hinged Hatch Access Assembly

Ductile iron access hatches have been designed for improved ergonomics, and are available in heavy duty and airport extra heavy duty applications. On a cover that can weigh as much as 550 lbs, the lifting force required to open the cover is less than 35 lbs due to the uniquely designed mechanical strut. The self-engaging safety bar provides added protection while the underground infrastructure is accessed, and safety grates can be specified for added fall through protection.

### Features

- Ductile iron frame and cover
- Cover opens to 105°, safety catch and removal at 90°
- Self-engaging safety bar
- EON LOCK®
- MPIC® multi-tool pick bar
- Bolting

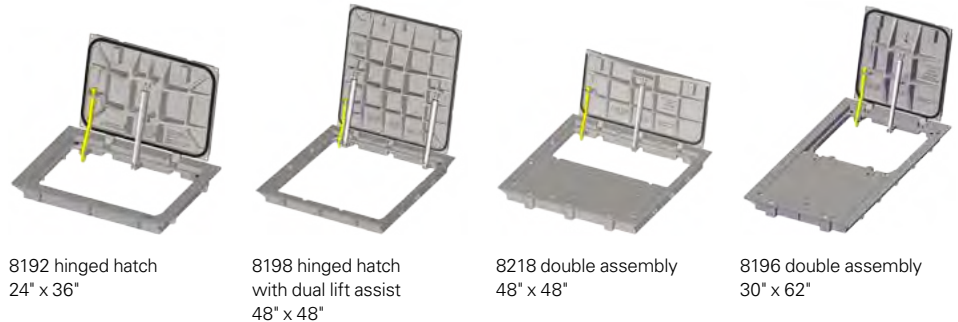
### Options

- Mechanical lift assist (standard feature for airport rated models)
- Top and bottom flange designs
- Safety grate
- INFRA-RISER® adjustment riser
- Forming skirt



### Wide Availability of Sizes

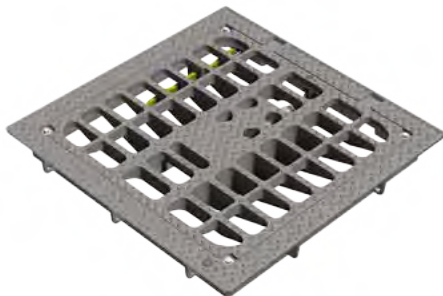
Shown below are just a sample of the various cover openings and sizes. See the table below for the full range of available clear opening sizes and load ratings.



### Ductile Hinged Hatch Clear Opening Options

Clear Opening Size	Airport Extra Heavy Duty Series No.	Heavy Duty Series No.
24 x 24	8195	8215
24 x 36	8192	8212
30 x 30	8196	8216
30 x 62	8196—Double	8216—Double
36 x 36	8197	8217
36 x 74	—	8217—Double
48 x 48	8198	—
48 x 48	—	8218—Double

Note: All dimensions are in inches.



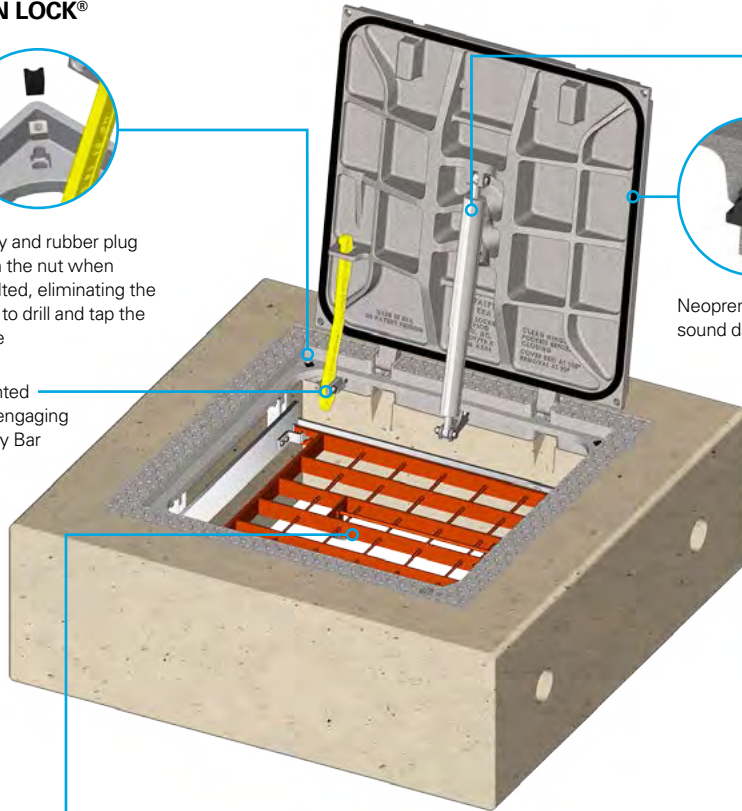
8197 grate option  
36" x 36"

**EON LOCK®**



Cavity and rubber plug retain the nut when unbolted, eliminating the need to drill and tap the frame

Patented Self-engaging Safety Bar



Neoprene gasket for sound dampening

**Lift Assist**

Lift Assist is a corrosion-resistant stainless steel mechanical spring strut. The rugged design is clean and maintenance free. The strut takes up less space in the clear opening than a traditional spring assist. It is fully self-contained, protecting coils from exposure to the elements.

Made without internal gases or seals, the struts have an effective operating temperature range of -30° F to 400° F. The durability has been tested at over 150,000 cycles.



**Optional Cam Lock**



Security cam lock and wrench shown. Wrench is only removable when cover is in the locked position.

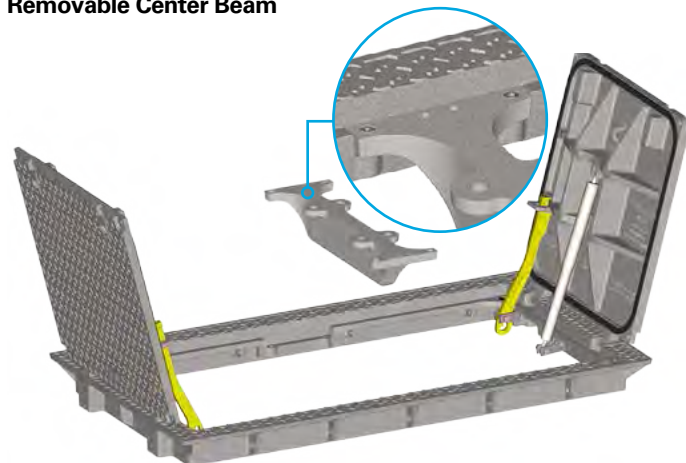
**Optional Safety Grate**

Provides additional safety features

- Doors cannot be closed unless the fall through protection has been put back in place (protecting the next operator).
- Visual inspections and limited maintenance can be done while safety grate is left in place.
- Orange safety grates create a visual barrier around the pit; an orange epoxy coating promotes an awareness of the hazard and provides a durable finish.
- Grate can be locked independently of the hatch, adding another level of security when needed.

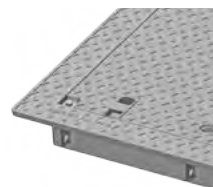


**Removable Center Beam**

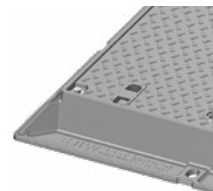


Removable center beam provides a much greater clear opening access on several double hatch models. Removal/replacement is simple with 4 bolts securing the beam to the frame.

**Frame Options**



Top flange frame



Bottom flange frame

**Optional Forming Skirt**



Available forming skirt simplifies precasting the hatch in concrete—no need for added forming to protect the inner hatch. The leave-in-place aluminum skirt can be made to fit any concrete slab thickness. (Image showing hatch upside down with forming skirt.)



Visit our YouTube Channel for videos on this and other products at [www.youtube.com/AccessInfrastructure](http://www.youtube.com/AccessInfrastructure)