

Louver Finishes & Colors

- KYNAR 500®/HYLAR 5000® (70% or 50%)
- Baked Enamel



BUILDING VALUE IN AIR.

 **GREENHECK**
Building Value in Air.

July
2006

Standard Colors

Greenheck offers 24 standard colors available in 70% KYNAR 500®/HYLAR 5000®, 50% KYNAR 500®/HYLAR 5000®, and Baked Enamel. Finishes meet AAMA chalk, gloss and erosion specifications for weather and chemical exposure as well as dry film thickness requirements. See back cover for Finish Reference Chart.

Custom color matching is available upon request. Contact your local Greenheck representative for color matching requirements and possible additional lead-time or cost.



Ivy GF101



Bone White GF102



Stone Gray GF103



Smoke GF104



Hampton Brown GF105



Capri Blue GF106



Herring Bone GF107



Classic Bronze GF108



Military Blue GF109



Cambridge White GF110



Brandy Wine GF111



Sandstone GF112



Spartan Bronze GF113



Patina Green GF114



Portland Stone GF115



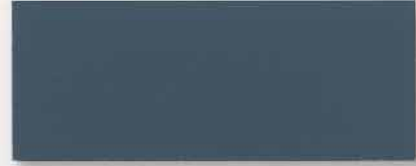
Pueblo Tan GF116



Forest Green GF117



Sierra Tan GF118



Wedgewood Blue GF119



Ascot White GF120



Coronado Red GF121



Ivory 031



Flat Black 044



Gloss Black 045

Mica Colors

Greenheck now offers nine standard 2-coat KYNAR 500®/HYLAR 5000® mica colors. Organic micas are comprised of natural minerals and crushed pearlescent that are resistant to the harmful effects of the environment compared to a synthetic 2-coat metallic which requires a third clear top-coat for comparable weather resistance.



Slate GF200



Rust GF203



Brownstone GF206



Sterling GF201



Frost GF204



Mocha GF207



Sand GF202



Sandalwood GF205



Charcoal GF208

Anodize Colors

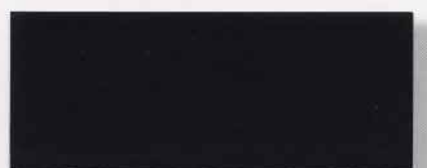
Greenheck offers seven industry standard anodize colors for our aluminum louver and architectural products.



Clear Anodize 215R1 or 204R1



Medium Bronze Anodize ANO-302



Extra Dark Bronze Anodize ANO-304



Champagne Anodize ANO-300



Dark Bronze Anodize ANO-303



Black Anodize ANO-305



Light Bronze Anodize ANO-301

Reference Chart

Choosing the right finish is as critical to a louver project as performance and ratings. The following chart puts complete application information at your fingertips to make the right choice.

Finish Type	Description/Application	Color Selection	Standard Warranty (Aluminum)
2-coat 70% KYNAR 500®/HYLAR 5000® AAMA 2605 – Dry film thickness 1.2 mil. (AKA: Duranar®, Fluoropon®, Trinar®, Fluoropolymer, Polyvinylidene Fluoride, PVDF2)	“Best.” The premier finish for extruded aluminum. Tough, long-lasting coating has superior color retention and abrasive properties. Resists chalking, fading, chemical abrasion and weathering.	Standard Colors: Any of the 24 standard colors shown can be furnished in 70% or 50% KYNAR 500®/HYLAR 5000® or Baked Enamel.	10 Years (Consult Greenheck for availability of extended warranty)
2-coat 50% KYNAR 500®/HYLAR 5000® AAMA 2604 – Dry film thickness 1.2 mil. (AKA: Acroflur®, Acrynar®)	“Better.” Tough, long-lasting coating has excellent color retention and abrasive properties. Resists chalking, fading, chemical abrasion and weathering.	2-Coat Mica: Greenheck offers 9 standard 2-coat Mica colors. Other colors are available. Consult Greenheck for possible extra cost when selecting non-standard colors or special finishes.	5 Years
Baked Enamel AAMA 2603 – Dry film thickness 0.8 mil. (AKA: Acrabond Plus®, Duracron®)	“Good.” Provides good adhesion and resistance to weathering, corrosion and chemical stain.	Light, Medium or Dark Bronze; Champagne; Black	1 Year
Integral Color Anodize AA-M10C22A42 (>0.7 mil)	“Two-step” anodizing is produced by following the normal anodizing step with a second, colorfast process.	Light, Medium or Dark Bronze; Champagne; Black	5 years
Clear Anodize 215 R-1 AA-M10C22A41 (>0.7 mil)	Clear, colorless and hard oxide aluminum coating that resists weathering and chemical attack.	Clear	5 years
Clear Anodize 204 R-1 AA-M10C22A31 (0.4-0.7 mil)	Clear, colorless and hard oxide aluminum coating that resists weathering and chemical attack.	Clear	1 Year
Industrial coatings	Greenheck offers a number of industrial coatings such as Hi-Pro Polyester, Epoxy, and Permator®. Consult a Greenheck Product Specialist for complete color and application information.		Consult Greenheck
Mill	Materials may be supplied in natural aluminum or galvanized steel finish when normal weathering is acceptable and there is no concern for color or color change.		N/A

Finishes meet or exceed AAMA 2605, AAMA 2604, and AAMA 2603 requirements.
Please consult www.greenheck.com for complete information on standard and extended paint warranties.
Paint finish warranties are not applicable to steel products.

