

OHIO GRATINGS, INC. ARCHITECTURAL METAL FENCES



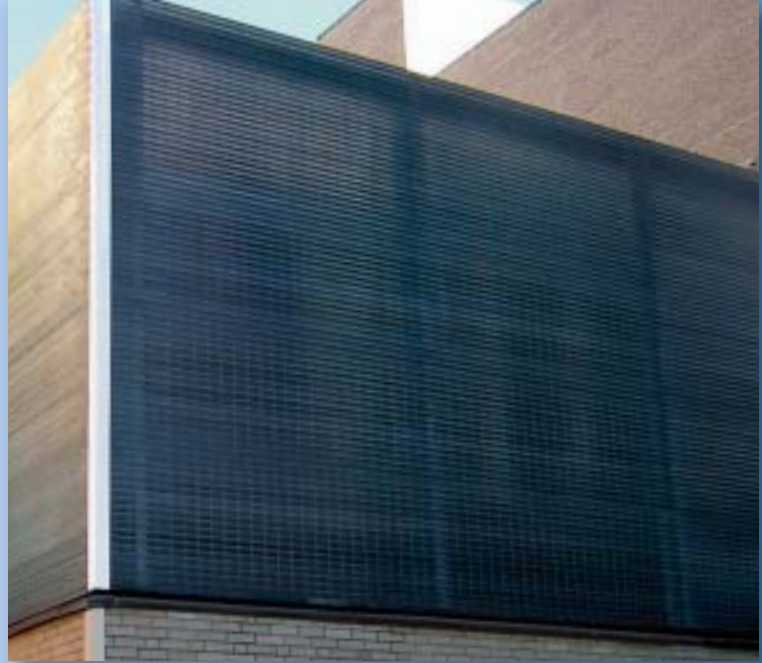
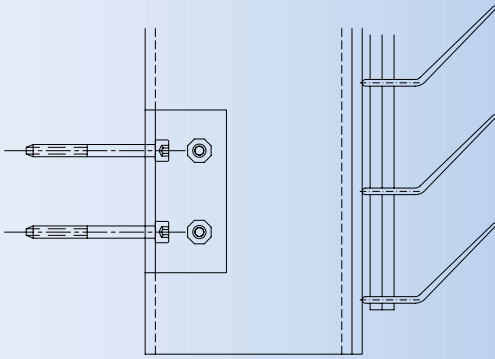


ARCHITECTURAL ALUMINUM FENCING

Ohio Gratings, Inc. (OGI) offers various aluminum fence designs which can be offered in a variety of strengths and visual specifications. Our fencing products can be customized to meet your exact requirements by adjusting the opening size as well as the bar thickness, depth and framing. Special finishes are available including anodized, Kynar and powder coat.

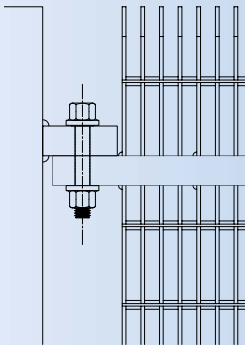
PTRP Biotech Research Building - Winston Salem, NC

Customer: Commercial Fabricators, NC
Architects / Engineers: O'Brien/Atkins Assoc.,PA
Contractor: Shelco Inc.
Grille: **VisiShield LG-75**, aluminum mill finish



St. Paul International Airport - Minneapolis, MN

Contractor: Morcon Construction, MN
Architect / Engineer: Kimley/Horn Assoc. - St. Paul, MN
Fencing: 3/4" opening, aluminum with powder coat finish
Bar Size: 1" x 1/8"





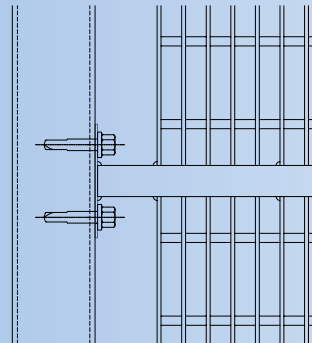
Ohio Gratings, Inc. (OGI) offers architectural infills that not only work good ...but look good too. They are ideal for dozens of uses, especially when you demand a level of flexibility that includes little maintenance, reasonable cost, easy installation, field adaptability yet pleasing to the eye. Our infills come with the required technical support, value engineering and all are customized to your particular specifications.

ARCHITECTURAL INFILL PANELS



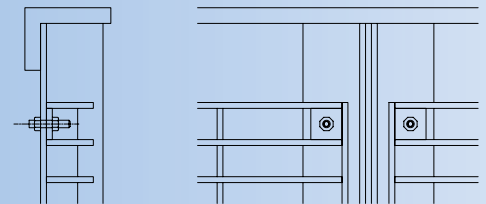
Virginia Tech. Physics Building - Blacksburg, VA

Customer: Commercial Fabricators, Inc.
Architect / Engineer: Clark Nexson - Norfolk, VA
Fence Infill: **Light Duty Steel** galvanized, gray powder coated
Bar Size: 1" x 3/16"



BYU Recreation Center - Provo, UT

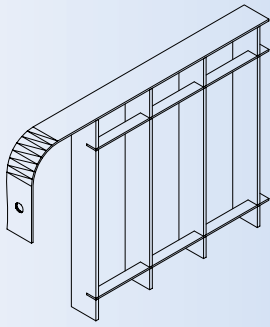
Customer: Grating Systems
Architect: VCBO Architecture
Contractor: Oakland /Span Construction
Handrail Infill: 1" opening between aluminum bars
Finish: white powder coated
Bar Size: 1" x 3/16"





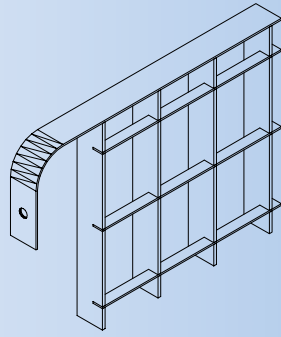
ARCHITECTURAL PressLock STEEL FENCING

Ohio Gratings, Inc. (OGI) is proud to offer our **NEW** architectural **PressLock** steel fence, which is ideal for multiple uses where esthetics and strength need to co-exist. OGI can custom manufacture and fabricate most mesh sizes or panel configurations required. Contact one of our sales team for assistance at 877-321-9800. Refer to the chart below for more specific information on how to specify what you need.



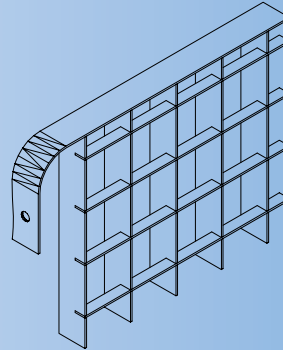
Urban

Opening: 2-3/8" x 5-1/4"
Bar Size: 1" x 12 gauge (.1046")



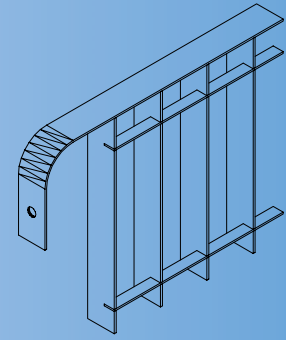
Guardian

Opening: 2-3/16" x 2-5/8"
Bar Size: 1" x 12 gauge (.1046")



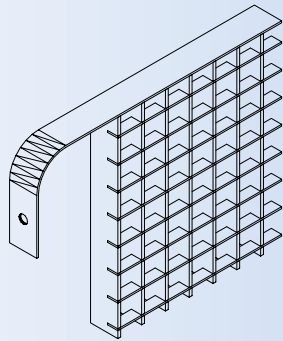
Perimeter

Opening: 1-3/4" x 1-3/4"
Bar Size: 1" x 14 gauge (.0747")



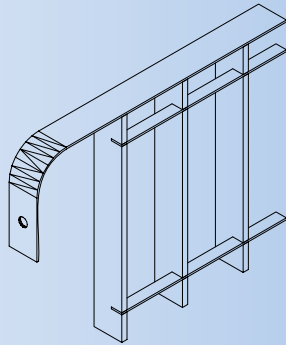
Palladium

Opening: 1-3/4" x 5-1/4"
Bar Size: 1" x 14 gauge (.0747")



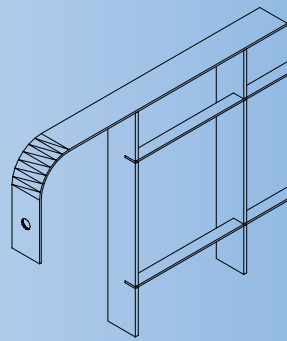
Screen

Opening: 7/8" x 7/8"
Bar Size: 1" x 12 gauge (.1046")



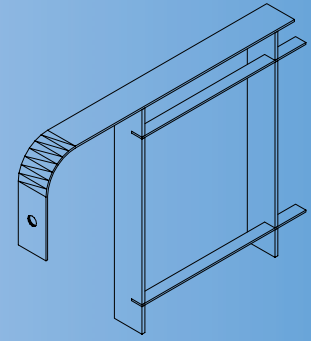
SafeGuard

Opening: 2-3/16" x 5-1/4"
Bar Size: 3/16" x 3/16" gauge (.0747")



Modular

Opening: 3-15/16" x 3-15/16"
Bar Size: 1" x 12 gauge (.1046")

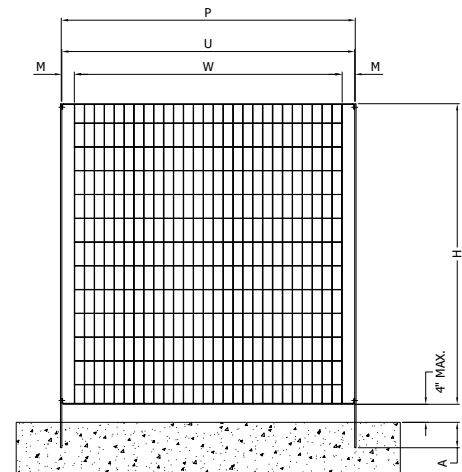


Tuscan

Opening: 4-13/16" x 5-1/4"
Bar Size: 1" x 12 gauge (.1046")

How to Specify...

Post Size	"H" Panel Height	"A" Anchorage Length	"P" Post Centers	"U" Unit Width	"W" Grille Width	"M" Mounting Projection
2-1/2" x 5/16"	36"	8"	52-5/16"	52"	48"	2"
2-1/2" x 5/16"	48"	8"	64-5/16"	64"	60"	2"
2-1/2" x 5/16"	60"	10"				
2-1/2" x 5/16"	72"	12"				
2-1/2" x 5/16"	96"	14"				



see us at
Sweets.com

