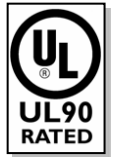


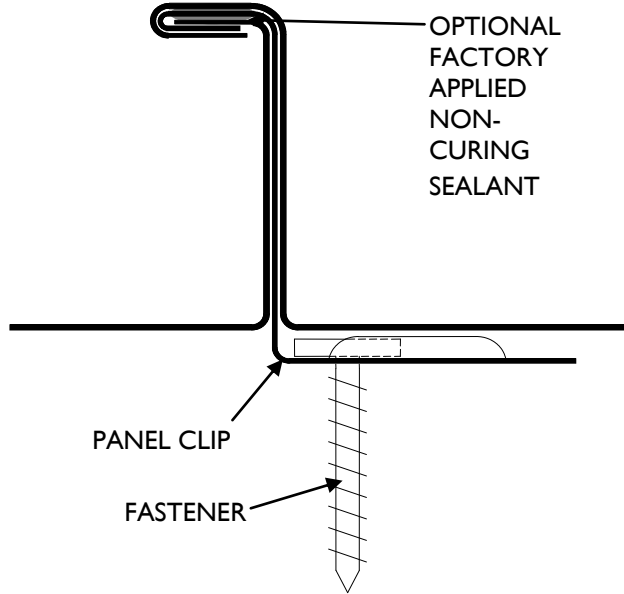


CURVED-RADIUS DOUBLE-LOCK

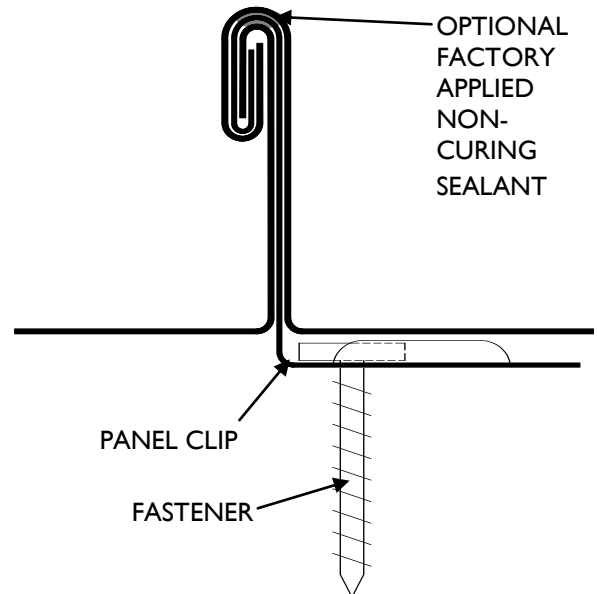
CR-DL15



www.dmimetals.com

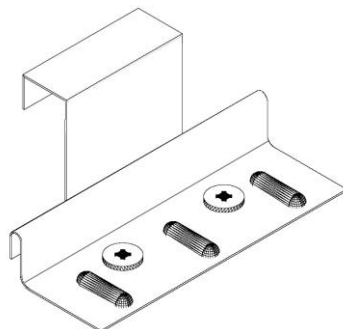


SEAM CROSS SECTION
(SINGLE-LOCK FOR RADII LESS THAN 40'-0" & 22 GA.)

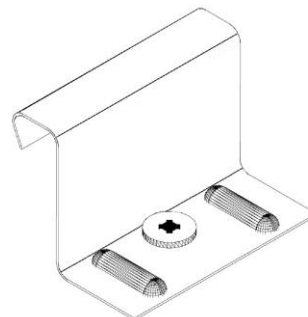


SEAM CROSS SECTION
(DOUBLE-LOCK FOR RADII GREATER THAN 40'-0")

CR-DL15 PANEL PROFILE:



DL15 EXPANISON CLIP



DL15 FIXED CLIP

CURVED-RADIUS DOUBLE-LOCK CR-DL15 (continued)

STANDARD PRODUCT OFFERING

24 ga., 22 ga. Steel, and .032 Aluminum:

MODEL NO.	SEAM ON-CENTER
CR-DL1512	12"
CR-DL1517	17"
CR-DL1520	20"

16 oz. and 20 oz. Copper:

MODEL NO.	SEAM ON-CENTER
CR-DL1514	14"
CR-DL1520	20"

Custom panel widths are available. Consult DMI for associated costs and lead times.

PRODUCT: CURVED-RADIUS DOUBLE-LOCK CR-DL15 is a structural panel which is mechanically seamed during installation. The product is an integral interlocking system by design meaning the panels install in one direction from a given starting point. A CR-DL15DM (double-male) starter panel is available (for a minimal set-up fee) and may be installed in the middle of a roof area to achieve a symmetrical layout. CURVED-RADIUS DOUBLE-LOCK utilizes the traditional SMACNA standing seam "double-lock" plate. CURVED-RADIUS DOUBLE-LOCK is a very flexible panel design which works well with a wide range of building designs.

NOTE: Continuous lengths from 3'-0" (min.) up to 90'-0" (max.) is standard. Lengths over 53' require additional crating fees and special hauling permits. Contact DMI for details.

22 ga. steel cannot be double-locked and is not stocked in all colors. Minimum order quantities and extended lead times may accompany panel orders when utilizing these substrates

Oil-canning, the slight waviness inherent with light gauge metal, does not affect the finish or structural integrity of the panel and is therefore not cause for rejection.

All DOUBLE-LOCK products are smooth standard.

Double Male panels are not recommended with metallic finishes due to the paint finish being directional and may cause color variation or shading.

ROOF ASSEMBLIES: DOUBLE-LOCK DL15 can be applied over various roof assemblies including: open framing, rigid insulation (utilizing a bearing plate under each panel clip spaced 30" o.c., max.) over 22 ga. corrugated steel deck, and various solid substrates including plywood sheathing, nail base insulation, or steel deck.

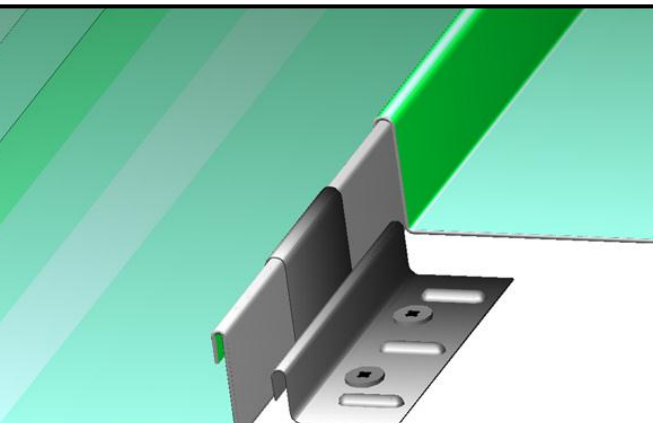
PRODUCT USES AND APPLICATIONS: Product uses include low to high slope barrel roofing, equipment screens, and mansards.

ADVANTAGES:

1. UL-90 classified assemblies: high wind uplift loading capacities
2. ASTM Air, Water Infiltration and Structural Tested: proven air and water tightness
3. Factory Applied Non-Curing Sealant: superior watertightness
4. SMACNA Seam Design: a traditional and historical aesthetic appearance
5. Mechanically Seamed: may be installed on low slope applications
6. Expansion Clips: allows for thermal expansion and contraction
7. Continuous Rollformed Lengths: eliminates need for panel lap joints.

RADIUS GUIDELINES:

GAGE / MATERIAL	MINIMUM CONVEX RADIUS	MINIMUM LAYOVER RADIUS
24 GA.	9'	120'
22 GA.	9'	135'
.032 AL	9'	90'
COPPER	9'	90'



DIMENSIONAL METALS, INC.

DMI has specialized in the manufacturing of Architectural Metal Panel Systems and Fabricated Architectural Sheet Metal for the construction industry for over 20 years. We use the most technologically advanced Fixed Base Roll-Forming Equipment with in house quality control so that we can offer the highest product quality available.

Please contact our Engineering Department today for technical assistance.

Headquarters
58 Klema Drive North
Reynoldsburg, OH 43068
Tel: 800-828-1510
Fax: 740-927-3319

North Carolina
Tel: 800-919-1510

Web: www.dmimetals.com
E-mail: sales@dmimetals.com

