



FIRESTOPPING

Products for Life Safety and Code Compliance

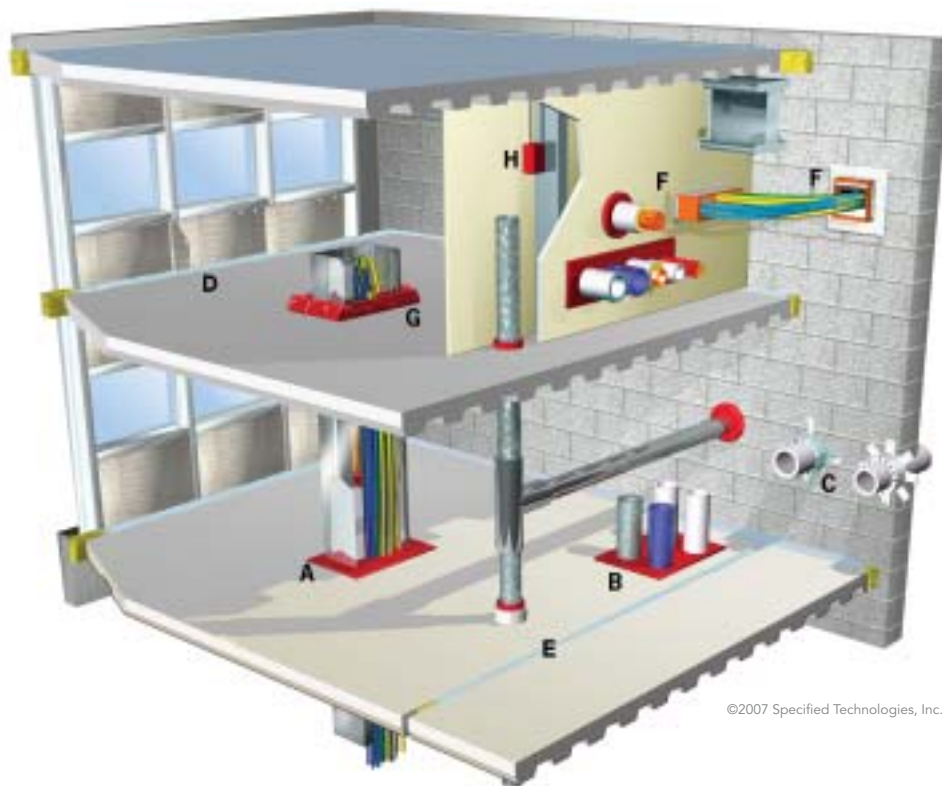
PRODUCT SELECTOR



SPECIFIED TECHNOLOGIES INC.

Specified Technologies, Inc. (STI) is an industry leader solely committed to the development of innovative, reliable firestopping solutions that help stop the spread of fire, smoke and toxic fumes.

For over 25 years, our management team has worked hand in hand with the construction industry to create innovative firestop solutions for all types of new construction and retrofit applications. We offer the broadest range of UL® Classified Systems — more than any other manufacturer. We keep material requirements to a minimum and we design systems with the installer in mind. The result is less labor and significantly lower installed costs.



FIRESTOP SEALANTS



Triple S® Intumescent Sealant

Premium grade intumescent firestop sealant featuring STI's patented two-stage intumescent technology. Triple S can be used in most common through-penetrations as well as a variety of membrane penetrations and construction joints.



LCI Intumescent Sealant

Standard grade intumescent firestop sealant engineered to economically address many common through-penetration applications in light commercial construction.



LC Endothermic Sealant

High quality, non-halogenated firestopping sealant designed for non-combustible penetrants in through-penetrations and construction joints.

PENSIL® Silicone Products

Premium silicone-based firestop sealant for use with construction joints as well as a variety of through-penetration firestop applications. PEN300 is a highly elastomeric product in construction joint applications that allows ± 50% movement.

RESIDENTIAL CAULK



WF300 Firestop Caulk

Intumescent firestop caulk designed for sealing through-penetrations and gaps in fire resistance-rated wood frame construction.

SmokeBlock® E-136 Caulk

Meets the requirement of ASTM E136 for use in non-rated applications for fireblocking and draftstopping.



FIRESTOP MORTAR

SSM Firestop Mortar

Lightweight, cementitious, compound suitable for openings of all sizes in fire-rated construction.

WRAP STRIPS & RESTRAINING COLLARS



SSW Wrap Strips

Intumescent, flexible wrap strips for through-penetrations.

WSC Restraining Collars

Preformed metal restraining collars for use with SSW Wrap Strips in plastic pipe applications.

FIRESTOP COLLARS



Firestop Collars

Ready-to-use firestop devices designed to collapse plastic pipe penetrations when exposed to fire conditions.

Range-Taking Collars

Factory-manufactured device designed to seal plastic pipes penetrating fire resistance rated walls and floors. SpecSeal® RTC Collars are designed to allow a single collar to fit 3" and 4" trade size pipes (89 and 114 mm) and corresponding 3" and 4" couplings (102 and 127 mm).



FIRESTOP SPRAYS & JOINT SEALANT



AS Elastomeric Spray

Water-based, spray applied coating for joints and certain through-penetrations in fire-rated walls or floors.



Fast Tack™ Firestop Spray

Quick dry firestop spray for use in curtainwall/ edge of slab, and general construction joints that are subject to movement.

Cable Spray

Latex-based cable spray for electrical, data or communication cables (racked or in cable trays).



ES Elastomeric Sealant

Non-halogenated latex-based sealant designed to provide passive smoke and fire protection in construction joint applications.

SMOKE & ACOUSTICAL SPRAY & SEALANT



Smoke 'N' Sound Acoustical Spray

Spray grade product for sealing openings in non-rated smoke barriers and partitions.



Smoke 'N' Sound Acoustical Sealant

High quality acrylic latex sealant designed for sealing through-penetrations and membrane penetrations in non-rated construction.

JOINT PROFILE



SpeedFlex™ Joint Profile

A quick, economical alternative to using strips of mineral wool forming material in the joint area between the fire-rated wall assembly and the bottom of a steel deck or concrete floor.

FIRESTOP ANGLE



FyreFlange™ Duct Angle

Duct support and firestopping in one product.

PATHWAYS



EZ-Path® Fire Rated Pathways

Easy installation and cable changes without the need to firestop. Used in a variety of cabling applications where re-entry is frequently needed and allows easy retrofits for existing cables.

FIRESTOP PILLOWS



SSB Intumescent Firestop Pillows

Intumescent firestop pillows expand in all directions for a tough, tight seal and easy retrofit for hard-to-fill, multiple penetrants, and large openings.

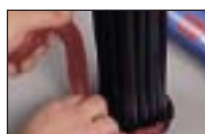
COMPOSITE SHEET



Composite Sheet

Lightweight, firestop panels effectively seal medium to large openings with a variety of penetrants in fire-rated floors and walls.

FIRESTOP PUTTY



SSP Putty

Two-stage intumescent, non-hardening putty for cable and pipe penetrations. Ideal in small to medium sized applications that will require re-entry.

PUTTY PADS



SSP Putty Pads

Two-stage intumescent, non-hardening putty pads are sized to provide protection for electrical outlet boxes.

FIRESTOP SLEEVES



Ready™ Sleeve

Everything needed to install a firestopped sleeve in new openings including sleeve, mounting hardware and all firestopping materials.



Ready™ Split Sleeve

Everything needed to install a firestopped sleeve around existing cables. The ONLY UL® Classified firestop sleeve for use in oversize openings.

ELECTRICAL BOX INSERTS



Powershield™ Electrical Box Inserts

Intumescent firestop electrical box insert pads install inside electrical boxes for applications where external pads cannot be used.

Building Codes

STI products meet the requirements of the following building code bodies:

- International Building Code
- Southern Building Code Congress International Chapter 7
- International Code Council
- Building Officials and Code Administrators, International Chapter 7
- International Conference of Building Officials (ICBO) Chapter 7
- Council of American Building Officials; Coordinating Agency between ICBO, SBCCI, and BOCA

National Codes

NEC

National Electric Code; Section 300-21

NFPA 101

The National Fire Protection Association Life Safety Code; Chapter 6, Appendix A-6

NFPA 70

The National Fire Protection Association, National Electric Code Chapters 3, 7, and 8.

Test Requirements

- ASTM E814
Test method for fire tests of through-penetration firestops
- UL1479
Fire tests of through-penetration firestops
- ASTM E119
Test methods of building construction and materials
- UL263
Standard fire test of building construction and materials
- ASTM E84
Test method for surface burning characteristics of building materials
- ASTM E2307
Test method for perimeter joints
- UL723
UL standard for surface burning characteristics of building materials
- ASTM E1966
Test method for fire resistive joint systems
- UL2079
Tests for fire resistance of building joint systems
- ASTM E90
Standard test method for laboratory measurement of airborne sound transmission loss of building partitions

Common Firestop Systems

SYSTEM NUMBER	DESCRIPTION	ASSEMBLY	PRODUCT
Bare Metallic Pipes & Tubing			
CAJ1080	Max 30" steel or iron pipe, max 6" copper pipe or tube	Concrete floor/Wall	SSS Sealant
CAJ1240	Max 6" steel conduit or max 4" EMT. 2-1/2" concrete Optional sleeve. 1/4" thickness sealant.	Concrete floor/Wall	SSS Sealant
CAJ1354	Multiple max 2" steel, iron, or copper pipe/tube, steel conduit, EMT, or flexible steel conduit. Caulk & backing.	Concrete floor/wall	LCI Sealant
CBJ1058	Max 12" steel or iron pipe, max 4" copper pipe, max 6" conduit, max 4" EMT. W Rating (class 1).	Concrete floor/wall	PEN300
FC1053	Max 4" steel, iron or copper pipe, copper tube, max 4" steel conduit, EMT. Optional chase wall. Caulk only.	Floor/Ceiling	WF300
WL1049	Max 24" steel or iron pipe, max 6" copper pipe or tubing. Caulk only.	Gypsum board wall	SSS Sealant
WL1062	Max 12" steel or iron pipe, 6" copper pipe/tube, 6" conduit, 4" EMT, or 1" flexible conduit. Caulk only.	Gypsum board wall	PEN300
WL1222	Max 6" steel conduit, max 4" EMT or flexible steel conduit. Caulk only.	Gypsum board wall	LCI Sealant
Insulated Metallic Pipes & Tubing			
CAJ5010	Max 2" steel, iron or copper pipe or copper tube with 1" thick fiberglass or mineral fiber. W Rating (class 1) when PVC jacket is used.	Concrete floor/Wall	PEN300
CAJ5079	Max 4" steel, iron or copper pipe or tubing with 3/4" AB/PVC.	Concrete floor/Wall	SSS Sealant
CAJ5087	Max. 24" steel or iron pipe, max 6" copper pipe or tubing with 2" fiberglass. Optional sleeve.	Concrete floor/Wall	SSS Sealant
FC5043	Max 4" steel, iron or copper pipe tubing with 1-1/2" fiberglass or 1" AB/PVC. Optional chase wall. Steel plate to connect discontinuous lumber plates. Caulk only.	Wood floor/Ceiling	LCI Sealant
WJ5005	Max 12" steel or iron pipe, max 4" copper pipe or tubing with 2" thick fiberglass. Caulk only.	Concrete/Masonry wall	SSS Sealant
WJ5012	Max. 4" steel, iron or copper pipe or tubing with 3/4" to 1" AB/PVC. Caulk only. Bottom install.	Concrete/Masonry wall	SSS Sealant
WL5014	Max 12" steel or iron pipe, max 4" copper pipe or tubing with 2" fiberglass. Caulk only.	Gypsum board wall	SSS Sealant
WJ5054	Max 6" steel or iron pipe, 4" copper pipe/tube with max 2" thick fiberglass or mineral fiber. Caulk only.	Concrete floor/Wall	LCI Sealant
WJ5055	Max 4" steel or iron pipe, 2" copper pipe/tube with max 3/4" AB/PVC. Caulk only.	Concrete floor/Wall	LCI Sealant
WL5054	Max 4" steel, iron, or copper pipe or copper tube with 3/4" or 1" thick AB/PVC. Caulk only.	Gypsum wall	SSS Sealant
WL5121	Max 6" steel or iron pipe, 4" copper pipe/tube with max 2" thick fiberglass or mineral fiber. Caulk only.	Gypsum wall	LCI Sealant
WL5122	Max 4" steel or iron pipe, 2" copper pipe/tube with max 3/4" AB/PVC. Caulk only.	Gypsum wall	LCI Sealant
Non-metallic Pipes & Tubing			
CAJ2282	Max 4" PVC, CPVC or ABS. Optional sleeve. Tuck-in method.	Concrete floor/Wall	BLU Wrap Strip BLU2 Wrap Strip
CAJ2290	Max 2" PVC, CPVC (DWV or closed), RNC, ENT, or OFR. Caulk only. Optional steel sleeve.	Concrete floor/Wall	LCI Sealant
CAJ2297	Max 6" PVC CPVC or ABS.	Concrete floor/Wall	RED Wrap Strip, BLU Wrap Strip, BLU2 Wrap Strip
CAJ2574	Max 4" PVC, CPVC pipe (DWV or closed), RNC, or ENT. Wrap Strip tuck-in with precut strips.	Concrete floor/Wall	SSW Precut Strips`
FA2048	Max 4" PVC, CPVC, ABS or FRPP. Steel plate.	Concrete floor	BLU Wrap Strip BLU2 Wrap Strip
FA2077	Max 4" PVC, CPVC, ABS, RNC, Max 3" FRPP. Optional sleeve. Tuck-in method.	Concrete floor	BLU Wrap Strip BLU2 Wrap Strip
FC2014	Chase wall. Max 2" PVC or CPVC pipe (DWV or closed). Caulk only.	Floor/Ceiling	WF300 Caulk
FC2032	Max. 2" PVC, CPVC, 1-1/2" ABS, 1" PB, PEX or PEX-AL-PEX. Optional chase wall. Caulk only.	Wood floor/Ceiling	SSS Sealant, LCI Sealant
FC2044	Chase wall optional. Max 2" PVC, CPVC or ABS (DWV closed) or RNC. Wrap strip tuck-in.	Floor/Ceiling	RED Wrap Strip
FC2158	Max 4" PVC, CPVC or ABS. Optional branch piping. Optional chase wall.	Wood floor/Ceiling	RED Wrap Strip BLU Wrap Strip, SSC Collar, LCC Collar
WL2100	Max 1" PB, PEX, max 1-1/2" ABS, max 2" PVC or CPVC. Caulk only.	Gypsum board wall	SSS Sealant
WL2241	Max 2" PVC or CPVC, max 1-1/2" ABS, max 1" PEX. Caulk only.	Gypsum board wall	LCI Sealant
WL2243	Super System. Max 6" PVC CPVC or ABS pipe (DWV or closed) or RNC. Wrap strip collar or factory collar	Gypsum wall	BLU Wrap Strip BLU2 Wrap Strip RED Wrap Strip SSC Collar

Visit us online for over 800 UL® Classified Solutions

www.stifirestop.com

SYSTEM NUMBER	DESCRIPTION	ASSEMBLY	PRODUCT
Multiple or Mixed Mechanical/Electrical			
CAJ8022	Multiple 4" steel, iron or copper pipes with or without pipe insulation or steel conduits/EMT. W Rating (class 1).	Concrete floor/Wall	PEN300
CAJ8083	Multiple max 4" steel, iron or copper with optional max 2" fiberglass or 3/4" or 1" AB/PVC or 4" steel conduit/EMT. Optional thermostat wires.	Concrete floor/Wall	LCI Sealant
CAJ8093	Max 12" steel or iron Pipe, max 6" copper pipe or tube, 2" fiberglass, 1" AB/PVC, 3" cellular glass or calcium silicate, max 2" PVC or CPVC, max 18" diameter duct	Concrete floor/ Wall	Pillows
CAJ8179	Multiple AC Line Sets with 3/4" pipes, 1/2" AB/PVC, thermostat wire and optional 1-1/4" PVC line. Optional sleeve. Caulk & backing.	Concrete floor/Wall	LCI Sealant SSS Sealant
CAJ8181	Multiple metal pipes or conduits, cables, cable tray, busway, and EZ-Path. 24 sq. foot opening.	Concrete floor/Wall	Composite Sheet
FC8021	Multiple A/C Line Sets. Optional chase wall. Caulk only.	Wood floor/Ceiling assemblies	LCI Sealant
FC8036	Optional chase wall. AC line set with 3/4" metal pipe, 1/2" AB/PVC line, and thermostat wire. Caulk only.	Concrete floor/Wall	WF300
WJ8040	Multiple metal pipes or conduits(bare or insulated), plastic pipe, cables, cable tray, busway, and EZ-Path. 24 sq. foot opening.	Concrete floor/Wall	Composite sheet
WL8011	AC Line set with 1" metal pipe, 3/4" AB/PVC & thermostat wire. Caulk only.	Gypsum wall	SSS Sealant
WL8025	AC Line set with 1" metal pipe, 3/4" AB/PVC & thermostat wire. Caulk only.	Gypsum wall	LCI Sealant
Air Duct			
CAJ7023	Max 6" steel duct.	Concrete floor	SSS Sealant
CAJ7027	Max 24" by 12" steel duct.	Concrete floor	SSS Sealant
CAJ7040	Max 12" diam steel duct. Optional metallic sleeve.	Concrete floor/Wall	LCI Sealant
CAJ7041	Max 24" x 12" steel duct.	Concrete floor/Wall	LCI Sealant
FC7014	Max 10" steel duct. Caulk only.	Wood floor/Ceiling assemblies	LCI Sealant
FC7034	Chase wall. Max 4" round steel duct. Caulk only.	Floor/Ceiling	WF300
WJ7005	Max 24" steel duct. Caulk only.	Concrete/Masonry wall	SSS Sealant
WJ7007	Max 100" by 100" steel duct. Caulk only.	Concrete/Masonry wall	SSS Sealant
WJ7092	Max 92" x 96" steel duct. Optional max 2" fiberglass insulation. FyreFlange.	Floor/Ceiling	FyreFlange™
WL7025	Max 100" by 100" steel duct. Caulk only.	Gypsum board wall	SSS Sealant
WL7026	Max 24" steel duct. Caulk only.	Gypsum board wall	SSS Sealant
WL7060	Max 24" x 30" steel duct. Caulk only. Steel retaining angles.	Gypsum board wall	LCI Sealant
WL7061	Max 8" round steel duct. Caulk only.	Gypsum board wall	LCI Sealant
WL7164	Max 92" x 96" steel duct. Optional max 2" fiberglass insulation. FyreFlange.	Gypsum board wall	FyreFlange™
Blank Openings			
CAJ0094	Max 4" opening. Metallic or nonmetallic sleeve.	Concrete floor/Wall	SSS Sealant, LCI Sealant
CAJ0113	Max 900 sq. in. opening.	Concrete floor/Wall	Composite Sheet
Cables			
CAJ3023	Electrical, telephone or data cables (40% Fill). W Rating (class1). Culk & backing material. 2, 3 Hr.	Concrete floor/Wall	PEN300
CAJ3154	Electrical, telephone, or data cables. Armored cables or metal clad cables. 45% Fill. 2-1/2" concrete. Metallic or nonmetallic sleeve.	Concrete floor/Wall	SSS Sealant, Putty/Putty Pads
CAJ3177	Electrical, telephone or data cables (34% Fill). Optional steel sleeve. 2-1/2" concrete. Caulk & backing material.	Concrete floor/Wall	LCI Sealant
FA3015	EZ-PATH® 33 One to Seven Device Modules. Electrical, telecom or data cables.(max 100% visual fill).	Concrete floor	EZ-PATH® 33
FA3021	Telephone or data cables (max 100% visual fill). EZ-Path Kick-In Plate.	Concrete floor/Wall	EZ-PATH® 33
FA3037	EZ-Path® 44 sixteen device modules. Floor grid system. Electrical, telecom or data cable.(max 100% visual fill).	Concrete floor	EZ-PATH® 44
FC3010	Electrical, telephone, or data cables, armored cables or metal clad cables (45% fill). Optional chase wall. Caulk only.	Floor/Ceiling	WF300
FC3057	Electrical, telepone or data cables. Armored cables or metal clad cables. 54% Fill. Optional chase wall. Caulk only.	Wood floor/Ceiling assemblies	LCI Sealant
WJ3158	EZ-Path® 44 One to five device modules. Electrical, telecom or data cable. (max 100% visual fill).	Concrete/Masonry wall	EZ-PATH® 44
WL3076	Electrical, telephone or data cables, armored cables or metal calad cables (4-1/2" bundle). Caulk only.	Gypsum wall	SSS Sealant

Regional Approvals

- New York City MEA
(Consult individual product data sheets which are available online at www.stifirestop.com or by contacting customer service - 800.992.1180)
- State of California Fire Marshal #4485-1332:100
- City of Los Angeles #RR25125
- Birmingham, AL - 11/3/1993
- Palm Beach County, FL - 01/25/1993
- State of Wisconsin #920078-G

In areas where local codes dictate, contact your STI representative for assistance.

Industry Associations

- AFSCC - Alliance for Fire and Smoke Containment and Control
- ASHE - American Society for Healthcare Engineering
- BICSI - Building Industry Service International
- CSI - Construction Specifications Institute
- IFC - International Firestop Council
- NAED - National Association of Electrical Distributors
- NEMRA - National Electrical Manufacturer's Representatives Association
- NIAC - National Insulation and Abatement Contractors
- STAFDA - Specialty Tool and Fastener Distributor Association
- NIA - National Insulation Association

Common Firestop Systems (continued)

SYSTEM NUMBER	DESCRIPTION	ASSEMBLY	PRODUCT
Cables (continued)			
WL3169	Electrical, telephone or data cables, armored cables or metal clad cables (4-1/2" bundle). Caulk only.	Gypsum wall	LCI Sealant
WL3210	Electrical, telephone or data cables. Armored cable or metal clad cables. 48% Fill. Extended steel sleeve.	Gypsum board wall	SSS Sealant, LCI Sealant, Putty/Putty Pads
WL3218	EZ-PATH® 33 One to Seven Device Module. Electrical, telecom or data cable. (max 100% visual fill).	Gypsum board wall	EZ-PATH® 33
Cable Tray			
CAJ4029	Multiple 18" by 5" steel or aluminum cable trays. Electrical, telephone or data cables.	Concrete floor/Wall	Pillows
CAJ4079	Max 24" wide cable tray with electrical, telephone or data cables.	Concrete floor/Wall	Composite Sheet
WL4008	Max 18" by 5" steel or aluminum cable tray	Gypsum board wall	Pillows
WL4063	Open ladder aluminum or steel cable tray with electrical, telephone or data cables.	Gypsum wall	Composite sheet
Bus Ducts			
CAJ6003	Max 23" by 4-1/2" busway.	Concrete floor/Wall	PEN300
WL6005	Max 19" by 5" busway.	Gypsum wall	Pillows
Bottom-of-Wall			
BW-S-0003	Max. 3/4" joint. Caulk only.	Gypsum board/Concrete floor	ES, LCI
Floor-to-Floor			
FF-D-0001	Max. 1" joint. Caulk over backer rod (both sides).	Concrete floor	PEN300 or PEN300SL (top)
FF-D-1010	Max. 4" joint. Concrete to concrete floor. 1 and 2 Hr.	Concrete floor	PEN300 or PEN300SL
FF-D-1025	Max 4" joint 3 Hr.	Concrete floor	AS Spray
Floor-to-Wall			
FW-D-1010	Max. 4" joint. Caulk and backing. 1/4" of sealant.	Concrete/Floor/Masonry wall	PEN300 or PEN300SL
FW-D-1035	Max. 4" joint. Spray and backing.	Concrete/Floor/Masonry wall	AS200
Head-of-Wall			
HW-D-0041	Max. 1" joint. Caulk over backer rod.	Concrete/Masonry wall Concrete slab	ES
HW-D-0043	Max. 1 to 2" joint. Optional metal or plastic conduit. Perpendicular wall.	Gypsum board/Steel deck	AS200
HW-D-0079	Max. 3/4" joint. Caulk only.	Gypsum board/Concrete slab	ES
HW-D-0086	Max. 1 to 2" joint. Optional metal or plastic conduit. Perpendicular wall.	Concrete/Masonry wall Steel deck	AS200
HW-D-0103	Max. 3/4" joint. Castle cut gypsum board. Caulk only.	Gypsum board/Steel deck Optional Cafco® or Monokote® fireproofing	ES
HW-D-0194	Max. 3/4" joint. Shaft wall system. Caulk only.	Gypsum board shaft wall Concrete slab	ES
Wall-to-Wall			
WW-D-0001	Max. 1" joint. Caulk over backer rod.	Concrete/Masonry wall	PEN300
WW-D-0004	Max. 1" joint. Caulk over backer rod.	Concrete/Masonry wall	ES
Perimeter Fire Barrier Systems			
CWD2042	Aluminum framed curtain wall with glass/aluminum/stone spandrels. Reduced spandrel panel height and vision panel sill height.		AS Spray Fast Track Spray
CWS1019	Gypsum sheathed/steel stud wall. Glass fiber batts in stud cavity. Various finishes: brick/metal/stucco/EIFS. Low sill height.		AS Spray Fast Track Spray
CWS1020	Steel backpan. Aluminum framed curtain wall with glass/aluminum/stone spandrel panels. Thermafiber products.		AS Spray Fast Track Spray
CWS2061	Aluminum framed curtain wall with glass/aluminum/stone spandrels. Reduced spandrel panel height and vision panel sill height.		AS Spray Fast Track Spray
CWS2062	Aluminum framed curtain wall with glass/aluminum/stone spandrels. 90 degree insulation hangers. Min 2" 8 pcf CW insulation. Thermafiber. 3 Hr.		AS Spray Fast Track Spray



Additional
CAD details, technical documents, product data sheets and MSDS sheets are available online through our Technical Library!

www.stifirestop.com



200 Evans Way
Somerville, NJ 08876
Toll Free: 800-992-1180
Fax: 908-526-9623
e-mail: specseal@stifirestop.com
www.stifirestop.com

SpecSeal®, EZ-Path® and Triple S® are registered trademarks of Specified Technologies, Inc.
High-Traffic™ is a trademark of Specified Technologies, Inc.
UL® is a registered trademark of Underwriters Laboratories, Inc.

© Copyright 2007. All rights reserved.