

**Non-loadbearing gypsum
wall partition assemblies for
elevator, mechanical and air
return shafts, stairwells, and
horizontal membranes**



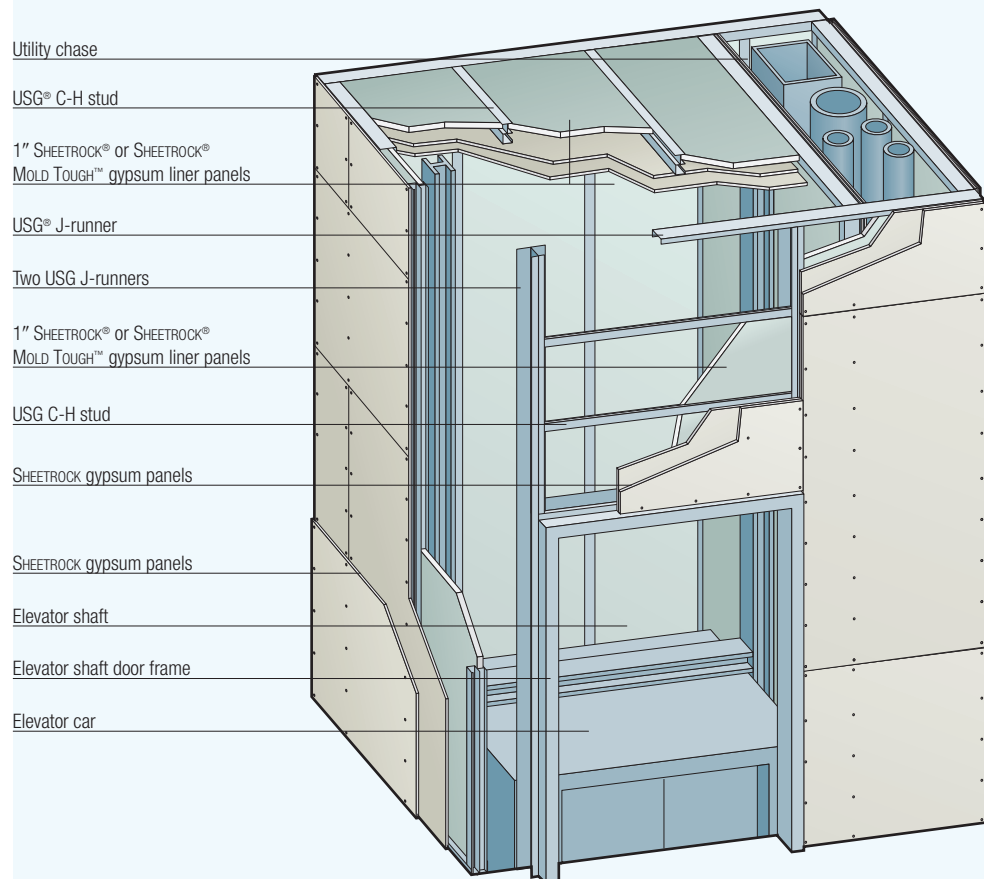
Shaft Wall Systems



Overview

USG shaft wall systems are non-loadbearing gypsum wall partition assemblies constructed from outside the shaft at each floor. Shafts are enclosed early in construction, and the walls are finished later along with interior partitions. Installation is quick and easy, using components and application procedures familiar to drywall contractors. This system installs faster than other multilayer gypsum panel systems because it is installed from one side, leaving the shaft free of scaffolding. The assemblies are constructed of gypsum liner panels friction-fitted into C-H studs in a progressive manner, with gypsum panels, gypsum fiber panels or cement board applied to the face.

Typical Shaft Wall Assembly



Fire-Rated Assemblies

09 20 00/USG
BuyLine 2425

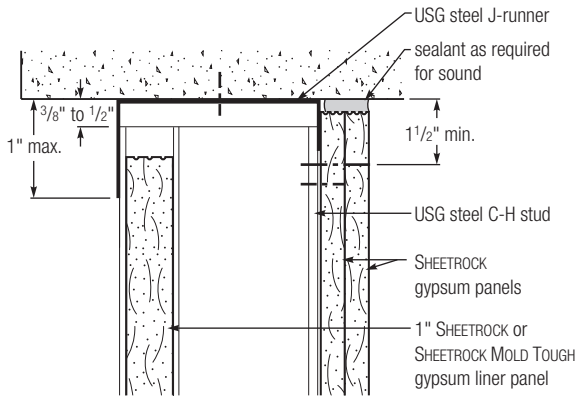
The assemblies listed below are a small sample of the UL Designs in which USG shaft wall systems can be used. For more details on fire-rated assemblies, see USG literature SA926, *Shaft Wall Systems*.



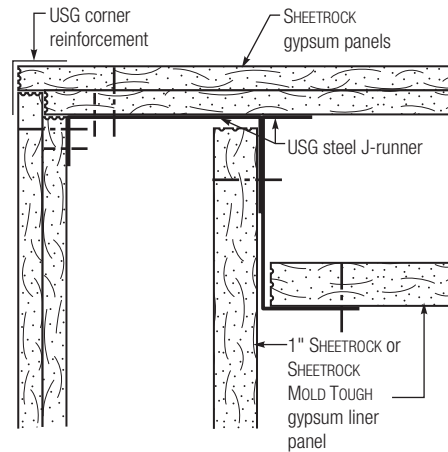
1 Hour Fire-rated Construction		Non-loadbearing	Acoustical Performance	
Construction Detail	Description	Test Number	STC	Test Number
wt. 8 	<ul style="list-style-type: none"> 5/8" SHEETROCK® brand FIRECODE® Core gypsum panels, joints finished 2-1/2" USG C-H studs 25 gauge 24" o.c. 1" SHEETROCK brand gypsum liner panels 	UL Des U415, System A or U469	39	USG-040901 Based on 4" C-H studs 25 gauge
2 Hour Fire-rated Construction				
wt. 9 	<ul style="list-style-type: none"> 1/2" SHEETROCK FIRECODE C Core gypsum panels, face layer joints finished 2-1/2" USG C-H studs 25 gauge 24" o.c. 1" SHEETROCK gypsum liner panels 	UL Des U415, System B or U438	38	USG-040917
			43	USG-040912 Based on 4" C-H studs 25 gauge
			48	RAL-OT-04-022 Based on 1" sound batts in cavity
			50	RAL-OT-04-019 Based on 4" C-H studs 25 gauge with 3" mineral fiber insulation
3 Hour Fire-rated Construction				
wt. 13 	<ul style="list-style-type: none"> 5/8" SHEETROCK FIRECODE C Core gypsum panels, face layer joints finished 2-1/2" USG C-H studs 25 gauge 24" o.c. 1" SHEETROCK gypsum liner panels 	UL Des U415, System G	45	USG-040903 Based on 4" C-H studs 25 gauge
			51	RAL-OT04-018 Based on 4" C-H studs with 3" mineral fiber insulation
4 Hour Fire-rated Construction				
wt. 18 	<ul style="list-style-type: none"> 3/4" SHEETROCK ULTRACODE® Core gypsum panels, on furring channel 24" o.c., over 2 layers 3/4" SHEETROCK ULTRACODE Core gypsum panels, face layer joints finished 2-1/2" USG C-H studs 25 gauge 24" o.c. 1" SHEETROCK gypsum liner panels – base layer over furring channel applied vertically 	UL Des U415, System I		

Details

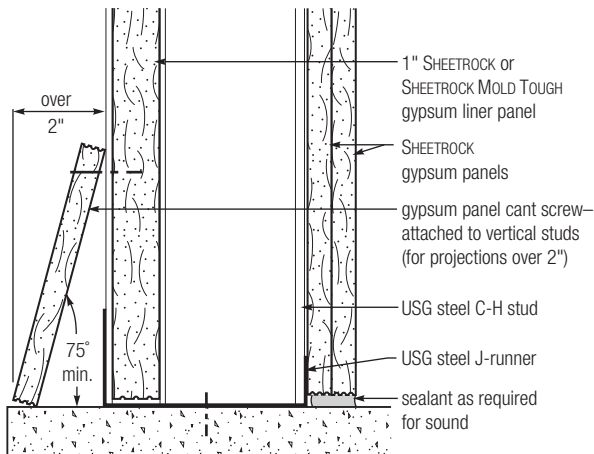
Head Section



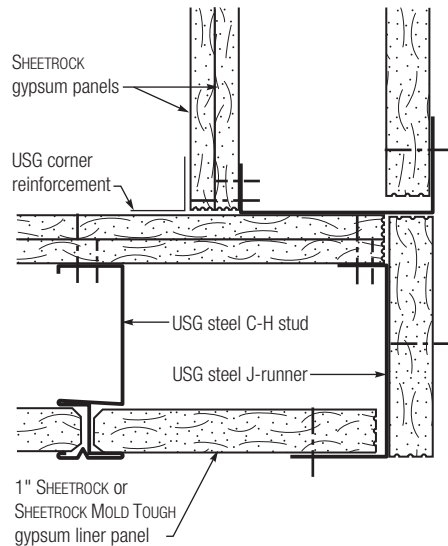
Outside Corner



Base Section



Inside Corner



Website

usg.com

Technical Service

800 USG.4YOU

Samples/Literature

888 874.2450

Samples/Literature E-mail

samplit@usg.com

Samples/Literature Fax

888 874.2348

Customer Service

800 950.3839

Product Information

See usg.com for the most up-to-date product information.

Metric Specifications

USG Corporation, through its operating subsidiaries, will provide metric conversions on its products and systems to help specifiers match metric design sizes. In addition, some products are available in metric dimensions from selected manufacturing plants. Refer to SA100 *Fire-Resistant Assemblies* for additional information and a Table of Metric Equivalents.

Trademarks

The following trademarks used herein are owned by United States Gypsum or a related company: FIRECODE, MOLD TOUGH, SHEETROCK, ULTRACODE, USG.

Notice

We shall not be liable for incidental and consequential damages, directly or indirectly sustained, nor for any loss caused by application of these goods not in accordance with current printed instructions or for other than the intended use. Our liability is expressly limited to replacement of defective goods. Any claim shall be deemed waived unless made in writing to us within thirty (30) days from date it was or reasonably should have been discovered.

Note

All products described here may not be available in all geographic markets. Consult your local sales office or representative for information.

Safety First!

Follow good safety and industrial hygiene practices during handling and installation of all products and systems. Take necessary precautions and wear the appropriate personal protective equipment as needed. Read material safety data sheets and related literature on products before specification and/or installation.



Manufactured by
United States Gypsum Company
550 West Adams Street
Chicago, IL 60661

SA926S/rev. 1-08
© 2008, USG Corporation
Printed in U.S.A.