

ASSA ABLOY

Behavioral Health Series™

ADAMS RITE | CECO DOOR | CORBIN RUSSWIN | CURRIES | MAIMAN
MARKAR | MCKINNEY | PEMKO | ROCKWOOD | SARGENT

The global leader in
door opening solutions



Portland VA Medical Center
Portland, OR

Behavioral Health Series™

ADAMS RITE | CECO DOOR | CORBIN RUSSWIN | CURRIES | MAIMAN
MARKAR | MCKINNEY | PEMKO | ROCKWOOD | SARGENT

With a broad range of products for healthcare environments, ASSA ABLOY is the only company that offers complete behavioral health solutions for your facility. From door locks and hardware to hinges and thresholds to doors and frames, our market-leading brands provide a unique combination of aesthetics, safety, security and durability that is unmatched in the industry.

Not sure which products are right for you? For more information visit www.assaabloydss.com/healthcare or contact a Door Security Solutions sales representative. Visit www.assaabloydss.com to find a consultant near you.



MicroShield®

As part of their promise to provide innovative solutions to their customers, certain ASSA ABLOY Group brands offer the MicroShield® technology, a silver-based antimicrobial coating designed to inhibit the growth of bacteria.

MicroShield® is a registered trademark of Yale Security Inc., an ASSA ABLOY Group company.

ASSA ABLOY

The global leader in
door opening solutions

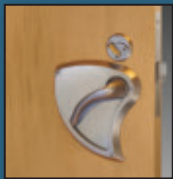
ASSA ABLOY

Behavioral Health Series™

Integrated Low Profile Trim

The global leader in
door opening solutions





Behavioral Health Series™

Integrated Low Profile Trim

Features

- Accepted by the New York State Office of Mental Health (OMH) and recommended by the National Association of Psychiatric Health Systems (NAPHS) for use in high risk areas
- Aesthetic, modern design with integrated lever and escutcheon
- Uses the ANSI/BHMA Grade 1 mortise lock
- Available in 30+ functions including Asylum/Institutional (ANSI F30), Institutional Privacy (ANSI F26) and Privacy (ANSI F22, F19 and F02) as well as electrified options
- For use on SARGENT 8200 Series and 9200 High Security Series mortise locks and CORBIN RUSSWIN ML2000 mortise lock
- Stainless steel finishes standard; MicroShield® antimicrobial coating optional
- Matching behavioral health thumbturn available
- ADA compliant
- Patent pending
- Available from CORBIN RUSSWIN (BHSS) and SARGENT (BHW)

Benefits

- Strong and durable: lock exceeds ANSI/BHMA Grade 1 requirements to withstand abusive environments. Robust, low profile trim is ideal for any application where carts or gurneys pass through doorways.
- Versatile: 30+ functions, including electrified and behavioral health specific; can be used on many opening types
- Minimizes risk: helps contribute to patient safety with unique design; available with MicroShield® antimicrobial coating

CORBIN RUSSWIN | SARGENT

ASSA ABLOY

www.corbinruswin.com / www.sargentlock.com

Copyright © 2013, ASSA ABLOY Inc. All rights reserved. Reproduction in whole or in part without the express written permission of ASSA ABLOY Inc. is prohibited.

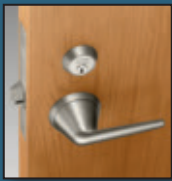
The global leader in
door opening solutions

Behavioral Health Series™

Lever Trim

The global leader in
door opening solutions





Behavioral Health Series™ Lever Trim

Features

- Designated as Use with Caution by the New York State Office of Mental Health (OMH) for use in low and medium risk areas
- Overlapping lever and rose construction
- Uses the ANSI/BHMA Grade 1 mortise lock
- Available in 20+ functions, including Asylum/Institutional (ANSI F30) and Institutional Privacy (ANSI F26) and 4 electrified options
- Stainless steel finishes standard; MicroShield® antimicrobial coating optional
- Matching behavioral health thumbturn available
- ADA Compliant
- Available from CORBIN RUSSWIN (BLSS) and SARGENT (BHL)

Benefits

- Strong and durable: lock exceeds ANSI/BHMA Grade 1 requirements to withstand abusive environments
- Flexible: 20+ functions, including electrified; can be used on many opening types
- Minimizes risk: Sloped surfaces and overlapping rose with lever address common concerns in behavioral health environments; available with MicroShield® antimicrobial coating
- Simple retrofit: Upgrade existing openings easily; uses standard mortise door prep

CORBIN RUSSWIN | SARGENT

ASSA ABLOY

www.corbinruswin.com / www.sargentlock.com

Copyright © 2013, ASSA ABLOY Inc. All rights reserved. Reproduction in whole or in part without the express written permission of ASSA ABLOY Inc. is prohibited.

The global leader in
door opening solutions

ASSA ABLOY

Behavioral Health Series™
Push/Pull Trim

The global leader in
door opening solutions





Behavioral Health Series™ Push/Pull Trim

Features

- Designated as Use with Caution by the New York State Office of Mental Health (OMH) for use in low and medium risk areas
- For use on mortise or bored locks
- Available in 40+ functions and a full range of finishes
- Electrified options provide connection to access control
- ANSI/BHMA Grade 1
- MicroShield® antimicrobial finish option
- “Push” and “Pull” identification available for paddles
- ADA Compliant
- Available from CORBIN RUSSWIN (HPSK) and SARGENT (ALP)

Benefits

- Beautiful: sleek, aesthetic form aligns with evidence-based design approach to healing environments
- Strong and durable: Grade 1 locks hold up to abusive environments
- Flexible: multiple mounting orientations allow customized openings
- Easy open: paddle shape and location create target for door activation without using hands, and push/pull motion is easy to operate

CORBIN RUSSWIN | SARGENT

ASSA ABLOY

www.corbinruswin.com / www.sargentlock.com

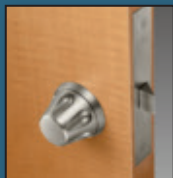
Copyright © 2013, ASSA ABLOY Inc. All rights reserved. Reproduction in whole or in part without the express written permission of ASSA ABLOY Inc. is prohibited.

The global leader in
door opening solutions

Behavioral Health Series™
Detention Knob

The global leader in
door opening solutions





Behavioral Health Series™

Detention Knob

Features

- Designated as Use with Caution by the New York State Office of Mental Health (OMH) for use in low and medium risk areas
- Uses ANSI/BHMA Grade 1 mortise lock
- Available in over 30 functions
- Overlapping knob and rose construction, with sloped surfaces throughout
- Stainless steel finishes standard; Microshield® antimicrobial coating optional
- Matching behavioral health thumbturn available
- For use on SARGENT 7800 Series and 9200 High Security Series mortise locks and CORBIN RUSSWIN ML2000 mortise lock
- Available from CORBIN RUSSWIN (HSS) and SARGENT (BHD)

Benefits

- Strong and durable: lock exceeds ANSI/BHMA Grade 1 requirements to withstand abusive environments
- Flexible: 30+ functions; can be used on many opening types
- Minimizes risk: helps contribute to patient safety with unique design; available with Microshield® antimicrobial coating

CORBIN RUSSWIN | SARGENT

ASSA ABLOY

www.corbinruswin.com / www.sargentlock.com

Copyright © 2013, ASSA ABLOY Inc. All rights reserved. Reproduction in whole or in part without the express written permission of ASSA ABLOY Inc. is prohibited.

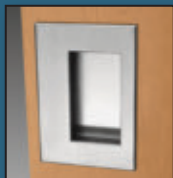
The global leader in
door opening solutions

ASSA ABLOY

Behavioral Health Series™
Recessed Flush Pull

The global leader in
door opening solutions





Behavioral Health Series™

Recessed Flush Pull

Features

- Accepted by the New York State Office of Mental Health (OMH) for use in high risk areas
- Fasteners concealed in cup
- Flush mount design
- Stainless steel construction
- MicroShield® antimicrobial coating optional
- Tamper-proof TORX security fasteners optional
- Available from ROCKWOOD (94C)

Benefits

- Concealed fasteners prevent patient tampering
- Smooth flush design presents no pinch points
- Ideal for use on slider doors, closets, and many other openings
- Durable stainless steel material for healthcare environments
- Minimize risk with MicroShield® antimicrobial coating and TORX fasteners

ROCKWOOD

www.rockwoodmfg.com

Copyright © 2013, ASSA ABLOY Inc. All rights reserved. Reproduction in whole or in part without the express written permission of ASSA ABLOY Inc. is prohibited.

ASSA ABLOY

The global leader in
door opening solutions

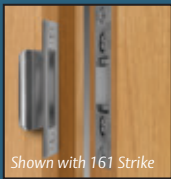
ASSA ABLOY

Behavioral Health Series™

Roller Latch with Strike

The global leader in
door opening solutions





Behavioral Health Series™

Roller Latch with Strike

Features

- Accepted by the New York State Office of Mental Health (OMH) for use in high risk areas
- For use on non fire-rated interior openings such as toilet rooms, bathrooms, shower rooms, closets, etc.
- Solid nylon roller for durable silent operation
- Simple adjustment for roller projection
- Used in conjunction with a variety of different strikes
- Available from ROCKWOOD (592)

Benefits

- Provides a safe latching system for en-suite bathroom doors
- Quiet operation for areas with multiple patients
- Provides patient privacy without providing a locking door
- Easy to install and use

ROCKWOOD

www.rockwoodmfg.com

Copyright © 2013, ASSA ABLOY Inc. All rights reserved. Reproduction in whole or in part without the express written permission of ASSA ABLOY Inc. is prohibited.

ASSA ABLOY

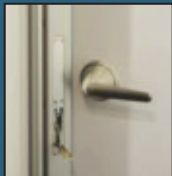
The global leader in
door opening solutions

Behavioral Health Series™

Double Swing Hinge

The global leader in
door opening solutions





Behavioral Health Series™

Double Swing Hinge

Features

- Unique 100° swing design allows the door to swing wide in either direction
- Continuous geared hinge design spans the full height of the door
- Used in conjunction with PEMKO Emergency Release Stop, with quick open flush bolt feature
- Hospital tips and TORX security fasteners are standard
- ADA and CMS Compliant
- Used in conjunction with PEMKO Emergency Release Stop (ERS_)
- Emergency Release Stop (shown above) available from PEMKO (ERS_)
- Available from PEMKO (DSH_)

Benefits

- Wide opening in either direction to allow access for equipment and gurneys
- Emergency Release Stop provides quick access in an emergency situation
- Provides added privacy while maintaining safety and security
- Continuous geared hinges provide proper alignment and weight distribution and extend the life of the door
- Hospital tips help provide a safer healthcare environment
- TORX security fasteners prevent tampering

PEMKO

ASSA ABLOY

www.pemko.com

Copyright © 2013, ASSA ABLOY Inc. All rights reserved. Reproduction in whole or in part without the express written permission of ASSA ABLOY Inc. is prohibited.

The global leader in
door opening solutions

ASSA ABLOY

Behavioral Health Series™

Hinges with Hospital Tips

The global leader in
door opening solutions





Behavioral Health Series™

Hinges with Hospital Tips

Features

- Knuckle or cap of the hinge is modified by tapering
- Smooth angled surfaces
- MicroShield® antimicrobial coating option available
- Stainless steel available on many models
- Can also be electrified for use with electronic locks and access control systems
- Available as (HT) option on a wide variety of ASSA ABLOY Group Brand hinges including:
 - MARKAR Continuous Pin & Barrel Hinges
 - MARKAR 200 and 300 Series hinges are accepted by the New York State Office of Mental Health (OMH) for use in high risk areas
 - McKINNEY Hinges
 - PEMKO Continuous Geared Hinges

Benefits

- Smooth tapered tips provide a safer environment for healthcare environments
- MicroShield® antimicrobial coating available to help inhibit the spread of germs
- Wide variety of specific use hinges are available with hospital tips to meet the needs of the specific application

MARKAR | McKINNEY | PEMKO

ASSA ABLOY

www.markar.com / www.mckinneyhinge.com / www.pemko.com

Copyright © 2013, ASSA ABLOY Inc. All rights reserved. Reproduction in whole or in part without the express written permission of ASSA ABLOY Inc. is prohibited.

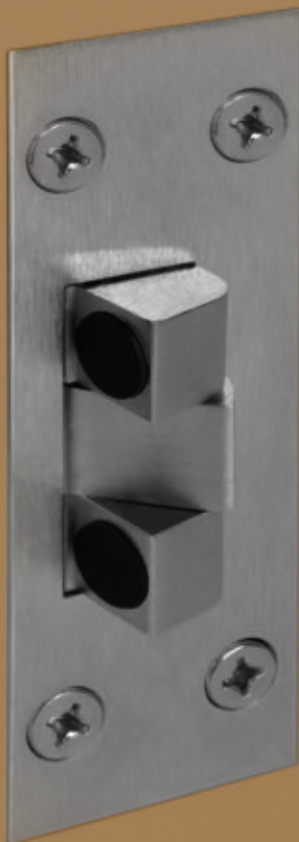
The global leader in
door opening solutions

ASSA ABLOY

Behavioral Health Series™

Emergency Door Stop

The global leader in
door opening solutions





Behavioral Health Series™

Emergency Door Stop

Features

- Accepted by the New York State Office of Mental Health (OMH) for use in high risk areas
- Emergency release allows door to swing open in the opposite direction
- Latch releases with a touch of the finger; Second touch of lever returns latch to original position
- Allows center hung or 1/8" inset doors to be opened in both directions without damaging the frame
- Used to convert double acting doors hung on center pivots to single acting doors
- Recommended for use with McKINNEY EP-J5 Jamb Mount Pivot Set
- Available from McKINNEY (DS-6)

Benefits

- Emergency release allows door to swing open, thwarting barricade efforts
- Latch release and return are intuitive and easy to use
- Reduces maintenance costs by preventing damage to the door frame
- Stretch budget by converting existing double acting doors



McKINNEY EP-J5

McKINNEY

www.mckinneyhinge.com

Copyright © 2013, ASSA ABLOY Inc. All rights reserved. Reproduction in whole or in part without the express written permission of ASSA ABLOY Inc. is prohibited.

ASSA ABLOY

The global leader in
door opening solutions

Behavioral Health Series™

Door Stops

The global leader in
door opening solutions





Behavioral Health Series™

Heavy Duty Door Stops

Features

- Accepted by the New York State Office of Mental Health (OMH) for use in high risk areas
- Flame resistant molded rubber bumper
- Prevents door from hitting the wall
- Vandal resistant
- No exposed fasteners
- Suitable for floor or wall mounting
- Available from ROCKWOOD (467 and 468)

Benefits

- Reduces costly wall and door damage caused by banging doors
- Resists patient tampering
- Withstands abuse due to thick rubber bumper and screw length in floor and bumper

ROCKWOOD

www.rockwoodmfg.com

Copyright © 2013, ASSA ABLOY Inc. All rights reserved. Reproduction in whole or in part without the express written permission of ASSA ABLOY Inc. is prohibited.

ASSA ABLOY

The global leader in
door opening solutions

ASSA ABLOY

Behavioral Health Series™
Wrought Wall Stops

The global leader in
door opening solutions





Behavioral Health Series™

Wrought Wall Stops

Features

- Accepted by the New York State Office of Mental Health (OMH) for use in high risk areas
- Bumper made of soft DuraFlex rubber
- Sloped design with no pinch points
- Concealed mounting
- Back plate prevents damage to wall
- Available in stainless steel for healthcare environments
- Tamper-proof TORX security fasteners optional
- Available from ROCKWOOD (406 and 409)

Benefits

- Resists patient tampering
- Reduces costly wall and door damage caused by banging doors

ROCKWOOD

www.rockwoodmfg.com

Copyright © 2013, ASSA ABLOY Inc. All rights reserved. Reproduction in whole or in part without the express written permission of ASSA ABLOY Inc. is prohibited.

ASSA ABLOY

The global leader in
door opening solutions

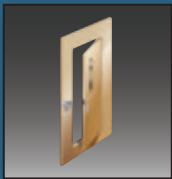
ASSA ABLOY

Behavioral Health Series™

Patient Room Access Door

The global leader in
door opening solutions





Behavioral Health Series™

Patient Room Access Door

Features

- Accepted by the New York State Office of Mental Health (OMH) for use in high risk areas
- First in the industry to achieve a UL10C (positive pressure) 45 minute fire rating for this type of application
- Steel stiffened construction for strength
- Eased edges for safety
- Standard top cases for security
- Astragal applied to face of door for privacy
- Two styles available (step through and walk through)
- Available from CECO DOOR and CURRIES (PRAD)

Benefits

- Has the security and dependability required for healthcare facilities, yet is beautiful enough for healing environments
- Gives caretakers or authorized personnel access to a patient's room in case of an emergency and maintain the security needed for the facility
- Main door functions as a standard in-swing patient room door
- Inner door opens to the corridor giving authorized personnel quick access to the patient's room

CECO DOORS | CURRIES

ASSA ABLOY

www.cecodoor.com / www.curries.com

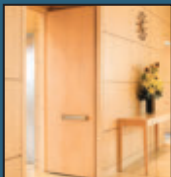
Copyright © 2013, ASSA ABLOY Inc. All rights reserved. Reproduction in whole or in part without the express written permission of ASSA ABLOY Inc. is prohibited.

The global leader in
door opening solutions

Behavioral Health Series™
The RITE Door®

The global leader in
door opening solutions





Behavioral Health Series™
The RITE Door®

Features

- Pre-installed hardware, ready to hang
- Top latching - no floor preparation required
- Complies with ADA, Life Safety & Fire Codes
- Exceeds ANSI/BHMA A156.32 Integrated Door Opening Assemblies - Grade 1 standards
- Meets or exceeds security and positive pressure tests
- Fire ratings up to 3 hours
- No maintenance service contract needed
- MicroShield® antimicrobial coating optional
- GREENGUARD Indoor Air Quality Certified
- Available from Adams Rite

Benefits

- Pre-installed hardware reduces field installation time and labor costs and eliminates fire inspection problems
- Continuous hinges ensure complete alignment between the door and frame, resulting in smooth maintenance-free operation under even the most demanding conditions
- Fiber-reinforced polymer bearings eliminate black dust and provide clean, quiet operation
- Exit devices and doors are available with MicroShield® protection, ideal for healthcare applications
- Factory installed low profile recessed exit bars keep openings clear for gurneys and wheelchairs

ADAMS RITE

ASSA ABLOY

www.ritedoor.com

Copyright © 2013, ASSA ABLOY Inc. All rights reserved. Reproduction in whole or in part without the express written permission of ASSA ABLOY Inc. is prohibited.

The global leader in
door opening solutions

ASSA ABLOY

Behavioral Health Series™
Thermal Fused Door

The global leader in
door opening solutions





Behavioral Health Series™

Thermal Fused Door

Features

- Low pressure laminating process fuses the face directly to the core to eliminate delamination
- Wide variety of standard wood-look surfaces
- Scratch-resistant cured surface
- Certified by WDMA for extra heavy duty performance level
- Passed the WDMA TM-7 cycle-slam test for 1,000,000 cycles
- STC Rated for 30, 32, and 40
- Manufactured with up to 85% recycled content
- FSC chain of custody available
- No Added Urea Formaldehyde available
- Green guard certified and CARB compliant
- Available from Maiman (TF)

Benefits

- Edge banding on tops and bottoms of doors seals out moisture from cleaning and adds protection against chipping
- Consistent look of wood makes it perfect for retrofit applications
- Designed to be long lasting - withstands the requirements of an extreme sanitary and abusive environment
- Lifetime warranty

MAIMAN

www.maiman.com

Copyright © 2013, ASSA ABLOY Inc. All rights reserved. Reproduction in whole or in part without the express written permission of ASSA ABLOY Inc. is prohibited.

ASSA ABLOY

The global leader in
door opening solutions

The Healthcare Solutions Showroom

The global leader in door opening solutions

We know that meeting the needs of clients and exceeding their expectations is a priority for healthcare facilities. ASSA ABLOY offers solutions and services that help meet these challenging goals. View door and hardware products that address patient security and asset protection needs. Explore openings that answer complex life safety and compliance concerns. Imagine the Good Design and Green possibilities offered by aesthetic and sustainable doorways.



ASSA ABLOY

Behavioral Health Series™

ADAMS RITE | CECO DOOR | CORBIN RUSSWIN | CURRIES | MAIMAN
MARKAR | MCKINNEY | PEMKO | ROCKWOOD | SARGENT

ASSA ABLOY Door Security Solutions

110 Sargent Drive
New Haven, CT 06511
www.assaabloydss.com

ASSA ABLOY is the global leader in door opening solutions, dedicated to satisfying end-user needs for security, safety and convenience

Copyright © 2013, ASSA ABLOY Inc. All rights reserved. Reproduction in whole or in part without the express written permission of ASSA ABLOY Inc. is prohibited.

2500-2081 1/14