



Shower Room Design Guide

Solutions for
commercial
shower
applications



bradleycorp.com



Shower Room Design Guide

Durable. Reliable. Diverse.

Are you in pursuit of the commercial shower solution designed to provide a solid foundation for your functional and aesthetic values – and withstand the test of time?

So are the experts at Bradley.

In fact, this approach to enduring, classic design has been our passion – and secret to success – for over 85 years.

Bradley offers the most comprehensive line of shower valves and shower systems, in addition to lavatories, faucets, partitions, thermostatic valves, solid plastic lockers, washroom accessories, and emergency fixtures. The goal is to provide you and the people who rely on your services with the widest array of design solutions available anywhere.



This Shower Room Guide has been designed to help you see how you can get the most from your relationship with Bradley.

BRADLEY: THE SOLUTION FOR SHOWER APPLICATIONS

	1 PERSON BUILT-IN	1 PERSON PREFAB	2-3 PERSON PREFAB
	<ul style="list-style-type: none">• Familiar to users and maintenance staff• Each shower built on site (in wall)• Requires independent supply connections• Layout flexibility	<ul style="list-style-type: none">• Eliminates in-wall piping• Preassembled – no need to “build” on site• Requires independent supply connections• Accommodates exposed or concealed piping• Best in tight spaces	<ul style="list-style-type: none">• One set of supply connections• Preassembled – no need to “build” on site• Soap dispensing can be incorporated• Accommodates exposed or concealed piping
	In-Wall Shower (1C)	In-Wall Shower (WS-1WCA)	Group Wall Shower (WS-3W)
School	•	•	•
Park and Rec	•	•	•
Industrial Plant	•	•	•
Stadiums or Arena	•	•	•
Health Club	•	•	
Student Housing	•	•	



COLUMN PREFAB

- One set of supplies for up to six stations
- Preassembled complete with drain system
- Water wear on walls eliminated
- Ideal for remodel
- Small surface to clean



WALL PANEL PREFAB

- Preassemble
- Easy access to supply piping
- One set of connections per panel
- Layout flexibility
- Ideal for remodel

Column Shower (COL-4C)	Panelon® Wall Shower (1PA)
•	•
•	•
•	•
•	•

● – Shower is applicable to facility type

3:1

Person-to-
Product Ratio

Schools K-12

The pathway from kindergarten through high school is probably one of the ultimate test tracks in any product's life cycle. Only proven, solid solutions that can withstand the rigors of children and young adults will make the grade. Bradley shower products score high on this test.

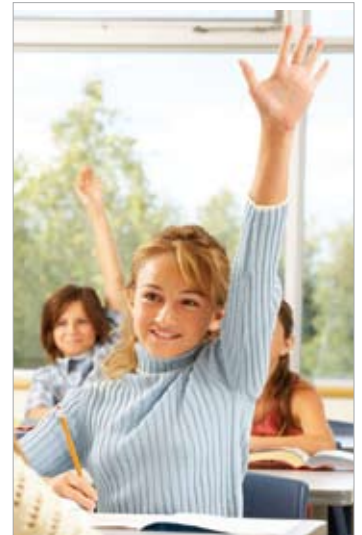
Key points:

Elementary Schools

- Shower rooms should have their showers installed at 5'6"
- Showers without partitions allow for easier supervision

High Schools

- Shower rooms should have their showers installed at 6'0"
- In situations where an entire class must shower in a limited time, maximum space utilization must be achieved
- Provide adequate number of showers for time limitations (3 minutes)
- Utilize a layout design that allows maximum supervision



Air Metering Valve

Reliably meters water from preset intervals of 5 to 45 seconds. ADA compliant.



Column Shower

Maximize shower space while virtually eliminating water wear on walls. One set of supply lines complete with its own drain.



MAINTENANCE	PRIVACY	VANDALISM	CONSERVATION
Choose fixtures that combine the showerheads, piping, control valves, and soap trays or dispenser into a single unit	Consult on privacy requirements with appropriate school representative prior to project starting	Use vandal-resistant showerheads and valves	The installation of electronic or pneumatic control valves in push button configurations shut off automatically after preselected time increments
Electronic metering valves prove more reliable than mechanical valve versions	Gender differences may impact privacy needs – avoid providing too little – especially for girls	Enclosed piping, low-profile designs with fixed directional spray protect the fixtures	2.5 or lower GPM flow restrictors for the showerheads
	Properly positioned partitions add privacy within budget limitations	Stainless steel construction offers long-lasting durability	

School facilities must now balance creating resilient and safe environments that are also welcoming. Furthermore, proper restroom and locker room planning must account for a multitude of issues from security and vandalism to traffic flow, ADA compliance and ease of maintenance.

TouchTime® Metering Valve

The most reliable metering valve in the industry - is easy to install, just plug it in and go. Performance is guaranteed since there are few moving parts and its operation is unaffected by most chemicals and minerals often present in municipal water supplies. The solid state digital circuitry is completely sealed within the push button cylinder, so water and humidity won't affect performance. Available pre-set in 60- or 180-second cycles. ADA compliant.



EconoWall Shower

Great solution for limited space and ease of use. Comes completely preassembled for quick installation.



4:1

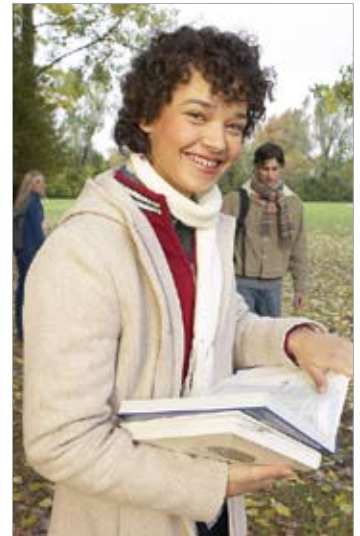
Person-to-Product Ratio

Student Housing

The transition from home into one's first experience with independence is a major moment in any person's life. And as schools look for new ways to compete for the best talent, not surprisingly, housing presentation is playing a greater role in defining a parent's comfort level, and a student's ultimate decision. That is why today's student housing market calls for both durable yet increasingly upscale bath and shower solutions.

Key points:

- Student housing and shower rooms are increasingly private accommodations
- Showers provide a space and moment for relaxation in an otherwise hurried day: focus on systems and designs that appeal to feelings of "home"
- In public spaces, focus on designs that encourage social interaction, while offering a sense of privacy with respect to personal space



Pivoting Wall Shower

With an industry-unique hinge for easy access and quick installation.



Terreon® Shower Pan

Solid surface, textured floor with ribbed bottom for extra strength. Available in white, bone, taupe and gray.

Equa-Flo™ HD

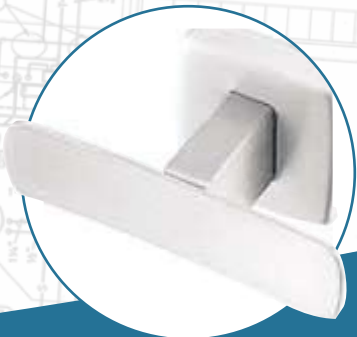
Pressure-balancing valve for heavy usage applications, with soft flow showerhead.



MAINTENANCE	PRIVACY	VANDALISM	CONSERVATION
<p>Reduce valve-servicing expense by specifying simplified, single-handle, pressure-balancing or thermostatic valves</p> <p>Consider Bradley's durable Terreon® shower pans for both long-lasting and aesthetic design options</p>	<p>Consult on specific student housing privacy requirements, which may vary by institution</p> <p>Gender preferences indicate that private showering and changing units are essential for women, and of increasing interest to men</p> <p>Privacy can be selectively designed into public spaces by the use of Bradley's partitions; available in a variety of materials and finishes</p>	<p>Vandalism may be minimized or eliminated in more public spaces in the following ways:</p> <p>Balance visual goals with durable pressure-balancing, or thermostatic valve with metal stem and control handle</p> <p>Durable chrome-plated brass showerheads also extend useful life</p>	<p>We suggest avoiding metering valves and other options that restrict water flow and temperature controls, to respect personal requirements and preferences.</p> <p>Select water-conserving shower-heads with 2.5 or lower GPM flow controls</p>

You need accessory options and we have them to fit every washroom and every budget. Satin finish stainless steel design to match any decor in recessed, semi-recessed and surface-mounted styles.

Shower Room Accessories
Shower curtains, grab bars, soap dispensers, towel/robe hooks and more.



10:1

Person-to-Product Ratio

Fitness Clubs

At the heart of things, fitness clubs are about maintaining a sense of connectedness and balance in one's life. And so the club's physical environment ultimately needs to mirror the membership experience. Competition, personal challenge and achievement, are the things that get reinforced every time a member "hits the showers" at the end of a workout session. It's also what keeps them coming back. Bradley solutions help reinforce the right impression every time.



Key points:

- Members, especially in private clubs, typically prefer more personalized spaces that balance privacy with social ease
- Demographic needs should be considered, especially in more traditional settings, or in areas catering to retiree members

Lenox® Lockers

Design flexibility, 20-year warranty, and shipped fully assembled for easy installation.

- Better alternative to metal because they are unaffected by moisture, humidity, or chlorine.
- Completely corrosion-proof
- Can be easily cleaned with soap and water.
- Absorption rate of nearly zero



Barrier-Free Hand-Held Shower

Includes thermostatic mixing valve to maintain consistent water temperature. Showerhead is connected to a 60" stainless steel flexible hose. A lever handle diverter controls the flow of water between the hand shower and the showerhead.

Equa-Flo C5

Pressure-balancing valve with deluxe showerhead.



MAINTENANCE	PRIVACY	VANDALISM	CONSERVATION
<p>Reduce valve-servicing expense by specifying simplified, single-handle, pressure-balancing or thermostatic valves</p> <p>Consider Bradley's hinge design Pivoting Individual Wall Shower Model WS-1X which allows servicing without dismantling</p>	<p>Both women and men prefer individual shower and dressing stalls – especially in exclusive clubs</p> <p>Generously sized shower stalls, which are balanced for space/frequency constraints, are generally preferred</p>	<p>Vandalism is not usually a concern at membership-driven fitness clubs</p> <p>Always use pressure-balancing or thermostatic valves to maintain consistent temperature and avoid scalding</p>	<p>To respect personal requirements and preferences, avoid metering valves and other options that restrict personally desired water flow</p>

“We were confident that the Lenox Lockers would perform well in securing items, they look good and they’re easy to clean. The only challenge our maintenance staff has is water inside the lockers when they’re cleaned with a pressure washer...we can handle that.”

Recreational manager
Muehlenbeck Center

Bradley's WS-1X individual shower and WS-1X-HN individual showers provide options at the fitness club.

The club also features Bradley's Express® Lavatory MG Series, Lenox® solid plastic lockers and pedestal benches, Mills® stainless steel partitions, and washroom accessories.



4:1

Person-to-
Product Ratio

Sport & Rec Facilities

There are few places on earth that see as much rugged foot traffic and rigorous use as a sports and recreation facility. Especially when it comes to shower room fixtures. Designed to handle the roughest traffic flows in the business, count on Bradley's enduring quality and flexibility to handle any team's (or fan's) peak-performance needs.

Key points:

Public and Private Sports & Recreational Facilities

- Multi-generational usage means showerheads should be installed at varying heights
- It is essential to comply with all public-use rules, including Americans with Disabilities Act (ADA)
- Water conservation is of high interest to owners looking to contain costs
- Specify vandal-resistant fixtures

Stadium & Arena Shower Rooms

- Specify quick clean up, vandal-resistant fixtures
- Showerheads to accommodate athlete heights
- Avoid metering valves that restrict duration of water flow

University & College Athletic Facilities

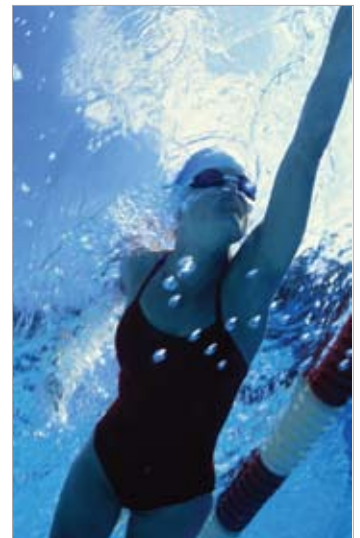
- Provide independent temperature control
- Design with aesthetics in mind – as these facilities are often showcased for athletic recruiting

Coverall Wall Shower

Preassembled, for easy installation, heavy-duty construction. Ideal for Park and Rec usage.

Equa-Flo HD

Pressure-balancing valve keeps water temperature and pressure at a consistent level. Shown with soft flow showerhead.



MAINTENANCE	PRIVACY	VANDALISM	CONSERVATION
Reduce valve-servicing expense by specifying simplified, single-handle, pressure-balancing or thermostatic valves	Privacy is preferred in shower stalls for both men and women in public sports and recreational facilities	Consideration of valves without volume or temperature controls is recommended for bathers in public facilities. Enclosed piping is also recommended	Consider electronic control valves with automatic shutoffs in public facilities
Consider Bradley's line of durable stainless steel wall showers	Privacy is of less concern in athletic stadium shower rooms, or university athletic facilities	Heavy-duty, institutional showerheads featuring low-flow design and fixed directional spray patterns are recommended only in public facilities	Select water-conserving showerheads with 2.5 or lower GPM flow restrictions
	Recreation Facilities that cater to families, larger shower stalls make it easier for parents with young children. Consideration should also be given to a Family Locker or Shower Room for moms with boys or dads with girls		Avoid metering valves and other options that restrict desired water flow in athletic facilities and stadiums
			Allow for independent temperature control in athletic facilities

“It’s been a year and a half since we started the shower renovation with Bradley...There are no drips and the shower rooms are dry. We have had no maintenance on any of the showers, which has saved us huge dollars in labor and parts, as well as the water savings.”

Maintenance manager
Edmonton Mall



5:1

Person-to-
Product Ratio

Industrial Plants

Supporting the manufacturing goals of throughput and uptime was the original inspiration behind Bradley's first industrial group shower and washroom systems. The designs spearheaded an industrial revolution of their own by helping employees feel and ultimately deliver their best. Now, more than 85 years later, Bradley is still refining solutions to help meet employee needs for both comfort and safety, keeping the wheels of industry turning.



Key points:

- Industrial settings typically prefer privacy showers in both women and men's locker rooms
- These settings also must appeal to individual needs and preferences, including selective temperature controls, while avoiding use of metering valves and extremely low-flow conservation showerheads
- Specify heavy-duty fixtures
- Accommodate peak demand with an ample supply of showerheads

Thermostatic Mixing Valve

Reliable wax-filled thermostat with adjustable set point. Positive shutoff of hot supply.



Panelon®

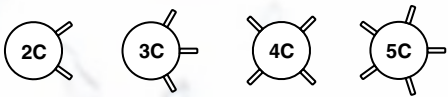
Prefabricated modular showers can be built to your specifications

MAINTENANCE	PRIVACY	VANDALISM	CONSERVATION
<p>Panelon® showers and prefabricated modular shower systems are recommended, especially for open shower room applications</p> <p>Consider Bradley's hinge design. Pivoting Individual Wall Shower for streamlined, trouble-free servicing, without dismantling</p>	<p>Check with management's preferred privacy requirements</p> <p>Adult men and women prefer use of private shower stalls</p>	<p>Vandalism is not a common concern. However, if present, it can be minimized or eliminated in the following ways:</p> <p>Balance aesthetic goals with durable, pressure-balancing, or thermostatic valve with metal stem and control handle</p> <p>Durable, chrome-plated brass showerheads also extend useful life</p>	<p>To respect personal requirements and preferences, avoid metering valves and other options that restrict personally-desired water flow</p> <p>Specify simple, single-handle pressure-balancing valves or thermostatic valves to reduce valve-servicing costs</p>

Privacy Multi-Stall

Unit complete with curtain and necessary hardware for installation. Panels available in Solid Plastic or Stainless Steel.

Showerhead Configurations for Models 2C–5C





ADA compliance

The Americans with Disabilities Act (ADA) is a comprehensive civil rights law enacted in 1990 to establish various rights to people with disabilities. Following are some considerations for providing barrier-free shower room access that meets ADA. More information/guidelines can be obtained at www.ada.gov.

Designing the Room Layout

- Obtain specific rules from ADA regarding mounting heights, clearances and ease of operation
- Recheck all measurements for entire space – as it is considered in the guidelines
- Consult local codes for any special requirements

ADA Shower System Requirements

- 36" x 36" shower stall
- Seat mounted 17-19" from floor
- Seat is full depth of stall wall
- Grab bar installed on the control side and back side of stall 33" to 36" from floor
- Spray unit must offer both hand-held unit with 60" hose and fixed showerhead
- Controls are 38-48" from floor
- Shower controls must require less than 5 lb of pressure to operate without any grasping
- Suggest Bradley's Equa-Flo pressure-balancing valve or TouchTime® metering valve with tempered water supply



Layout Considerations

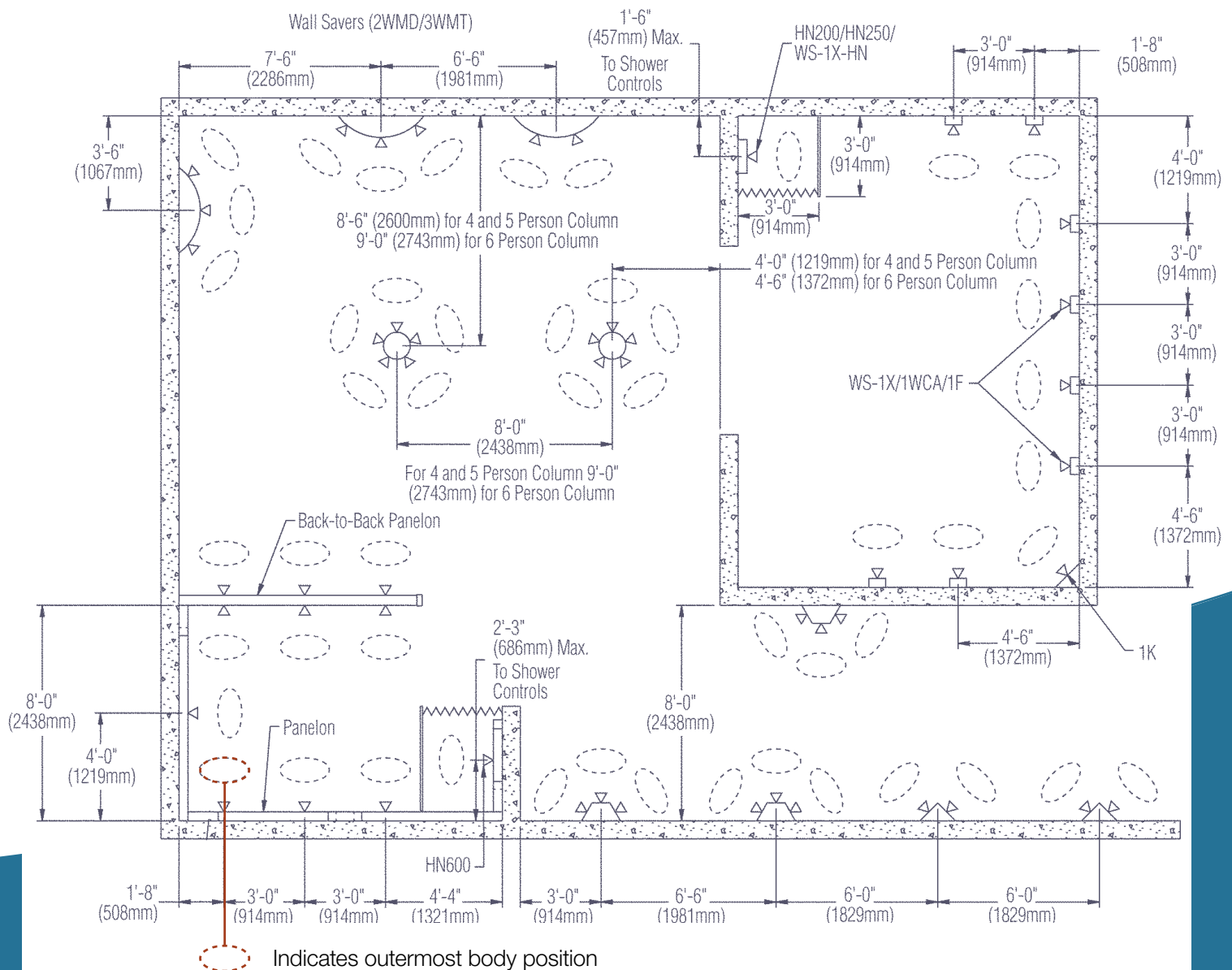
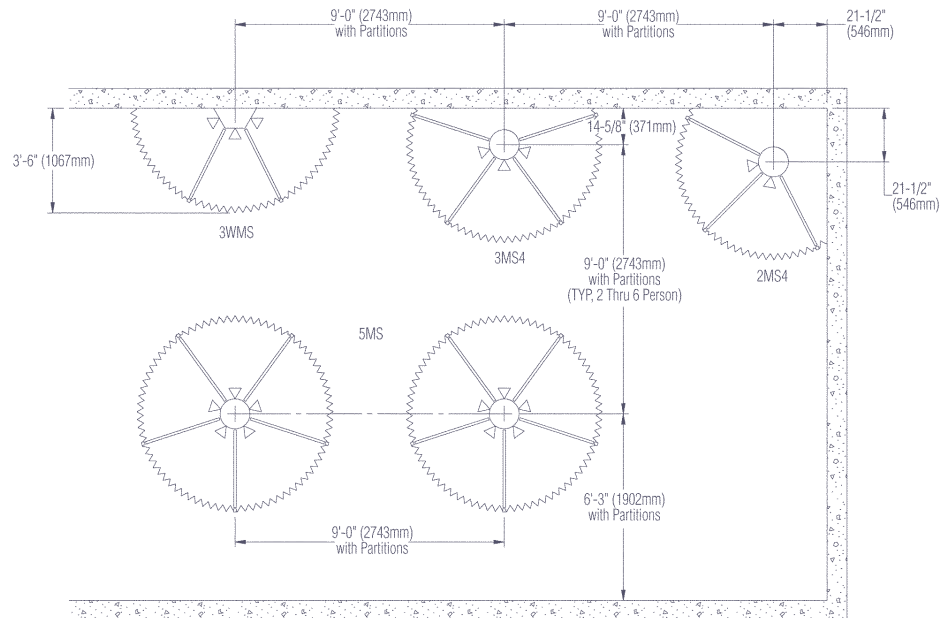
Maximum Space Efficiency

Can be achieved by utilizing the center of the shower room. Back-to-back panel showers, conventional showers or the use of column showers provide multi-station showering.

Minimum Practical Clearances

For additional Shower room layout information, refer to Bradley's Technical Data found on the web: bradleycorp.com.

The clearances shown are absolute minimums. Always allow a minimum of 24" for traffic to/from a station.





800.BRADLEY (800.272.3539) bradleycorp.com
W142 N9101 Fountain Boulevard
Menomonee Falls, WI 53051

Bradley 
bradleycorp.com

3580-5-0409DL