



# **General Contractors**

**Tormax iMotion<sup>®</sup>  
TN 110 In-Floor Swing Door Operator**

## **Installation/Facilitation Guidelines**

*Center Pivot Application – Left Hand Operator w/ Flush Mounted Box*

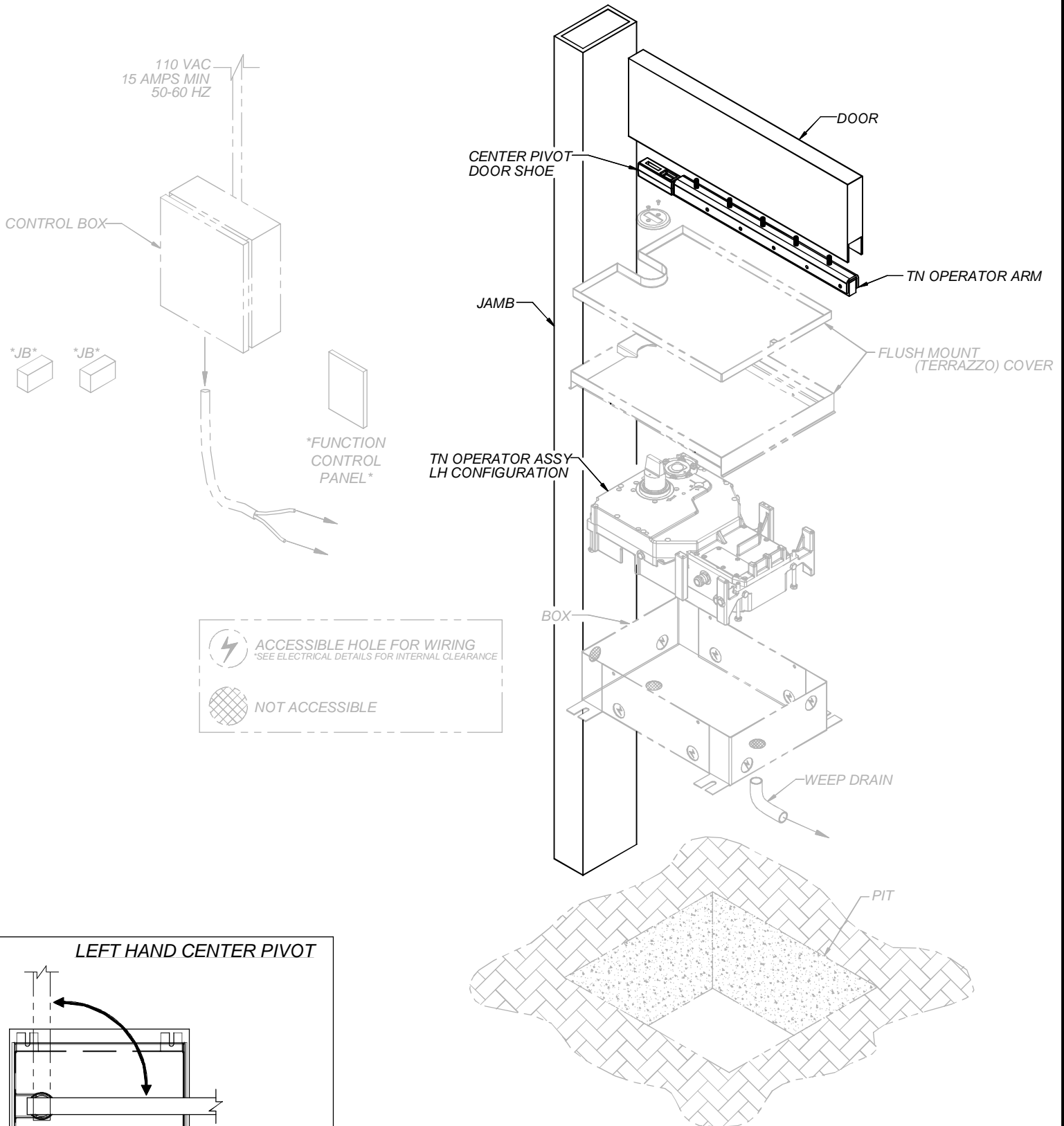
### **Table of Contents**

---

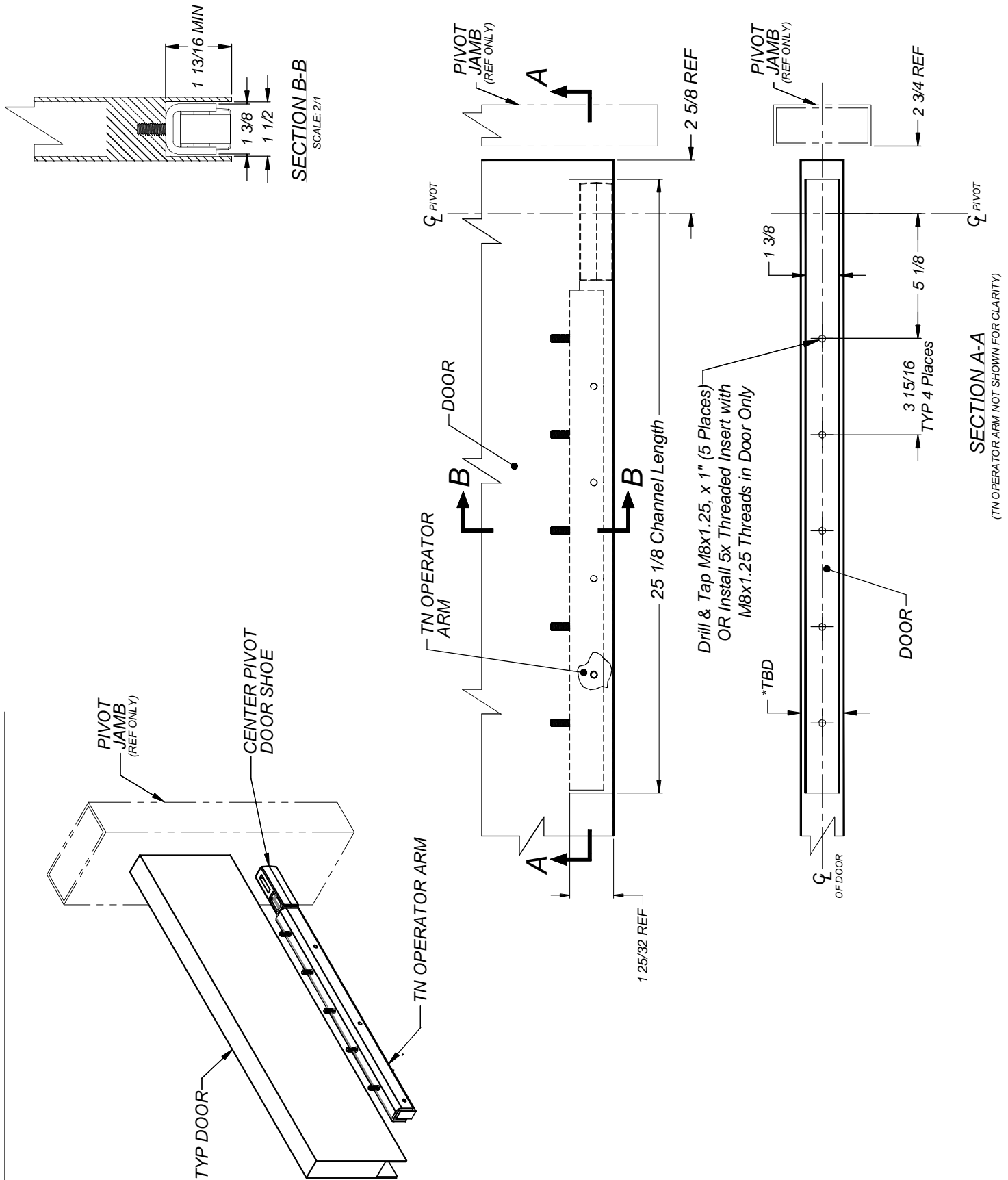
<b><i>Door Fabrication Details</i></b>	<b><i>1-2</i></b>
<b><i>Electrical Details</i></b>	<b><i>3-5</i></b>
<b><i>Masonry/Pit Details</i></b>	<b><i>6-7</i></b>

**DOOR FABRICATION DETAILS**

NOTE: " \* " - INDICATES COMPONENT IS JOB SPECIFIC OR OPTIONAL

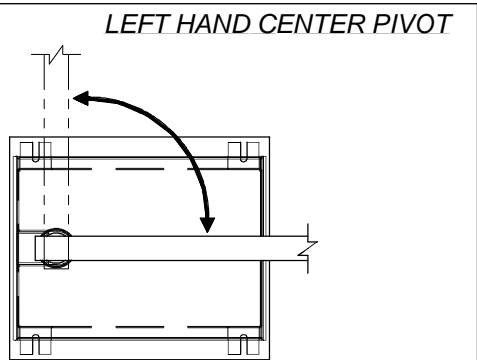
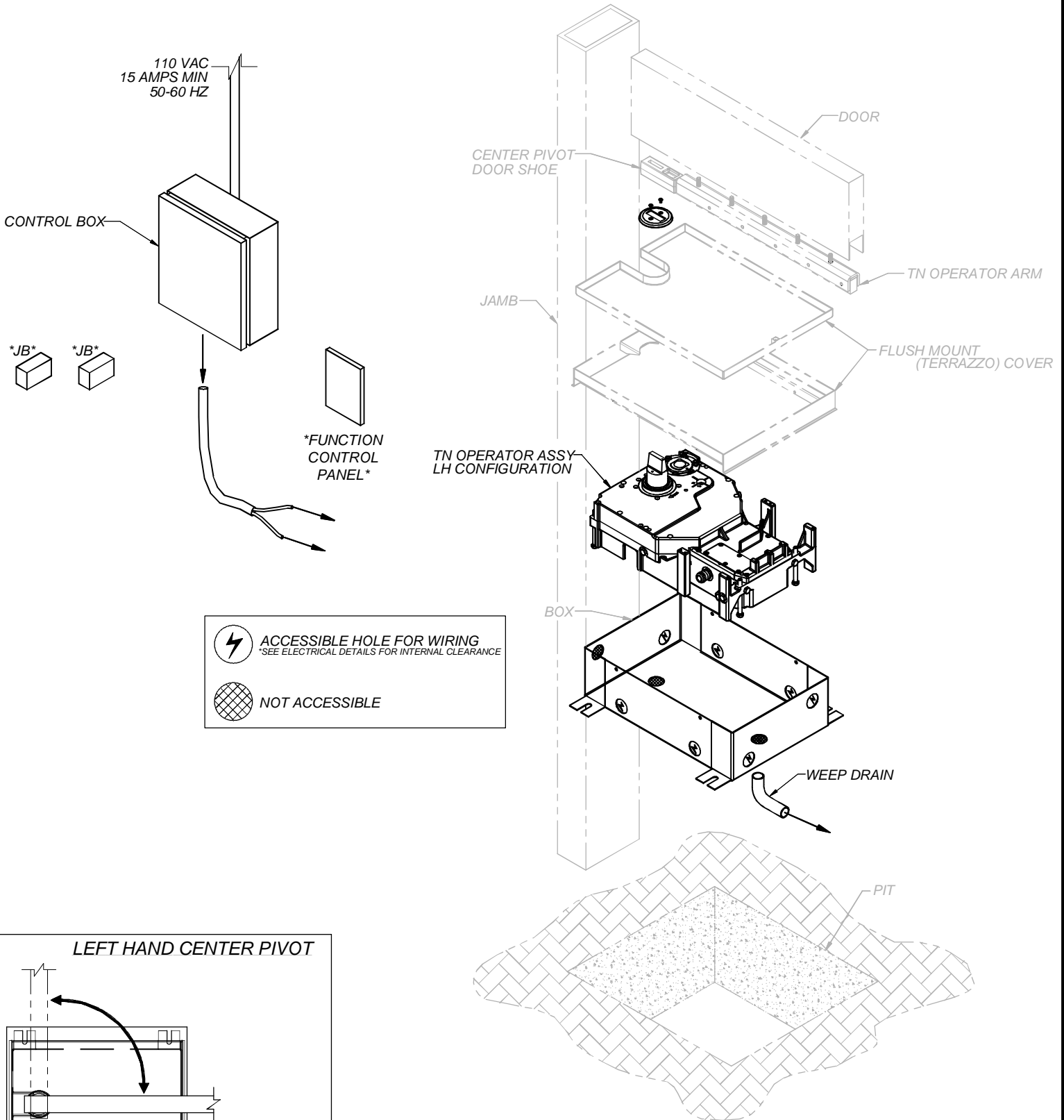


DOOR FABRICATION DETAILS



**ELECTRICAL DETAILS**

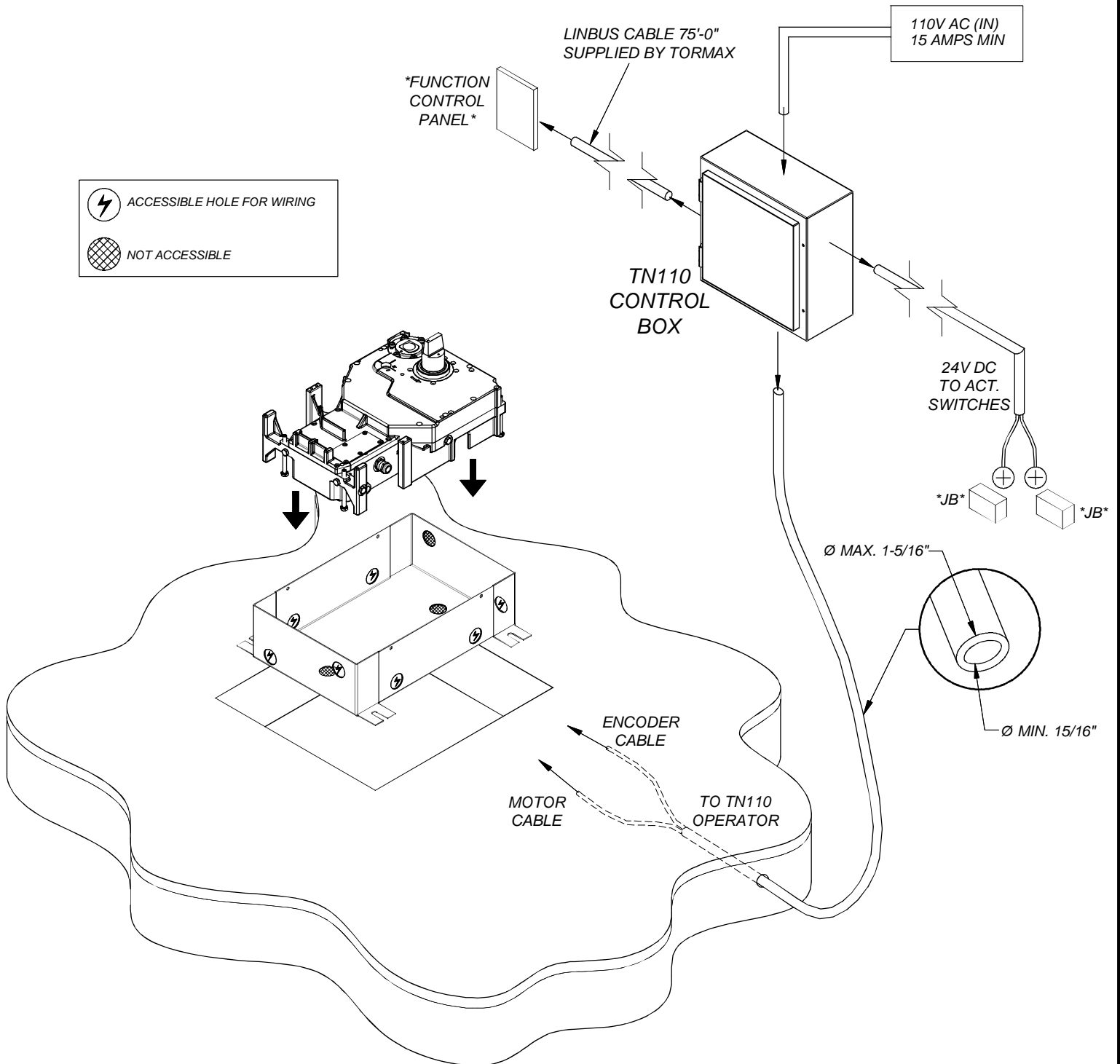
NOTE: " \* \* " - INDICATES COMPONENT IS JOB SPECIFIC OR OPTIONAL



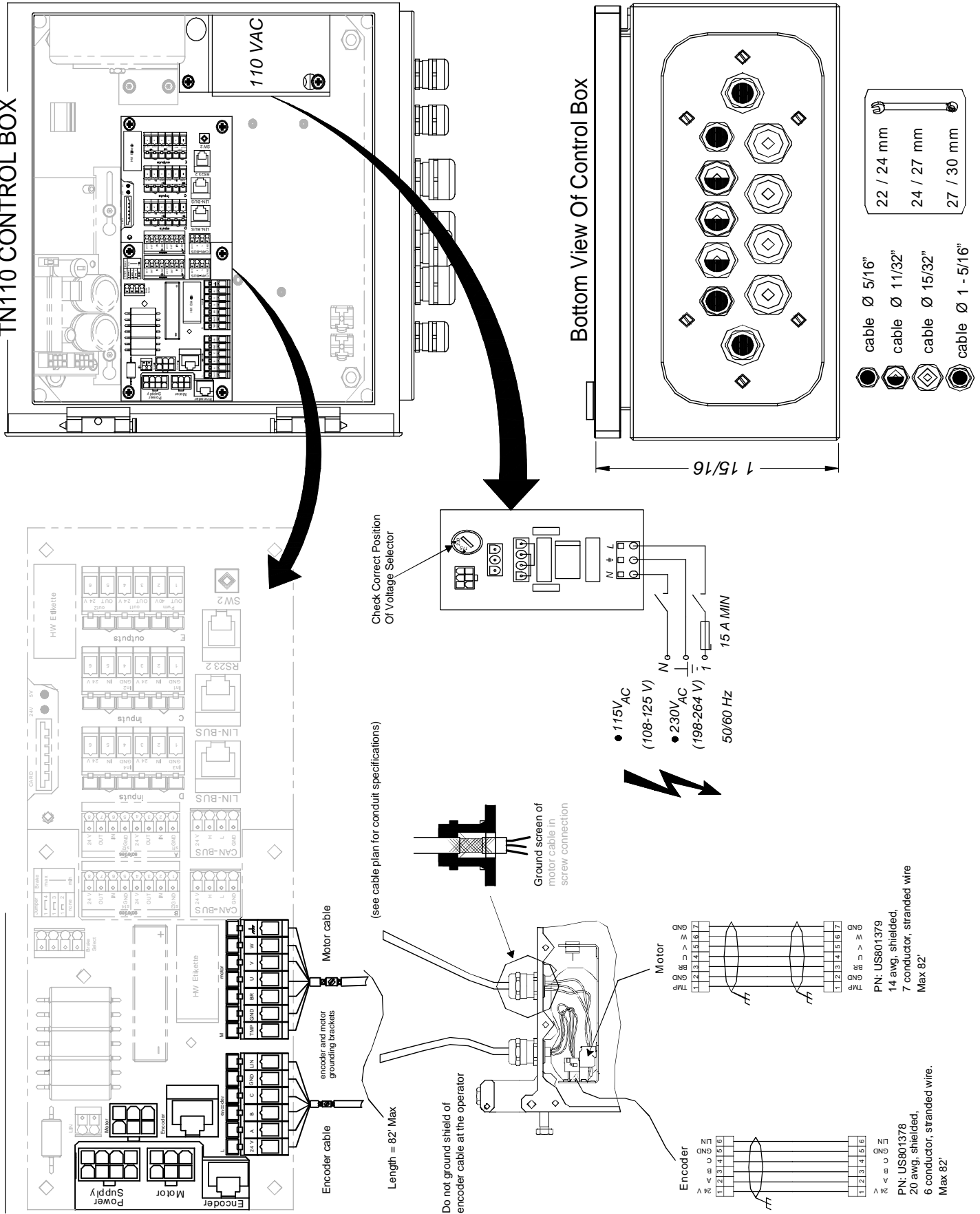
**NOTES:**

- (1) \* \* \* INDICATES JOB SPECIFIC. CONSULT GC FOR FURTHER DETAILS.
- (2) REF NEXT PAGE (ELECTRICAL DETAILS, SHT 3) FOR WIRING DETAILS.
- (3) REF TN110 OPERATION MANUAL (P/N: US801461) FOR ADDITIONAL INFORMATION.
- (4) INSTALLATION AND WIRING PRACTICES MUST COMPLY WITH LOCAL CODES.

**ELECTRICAL DETAILS**

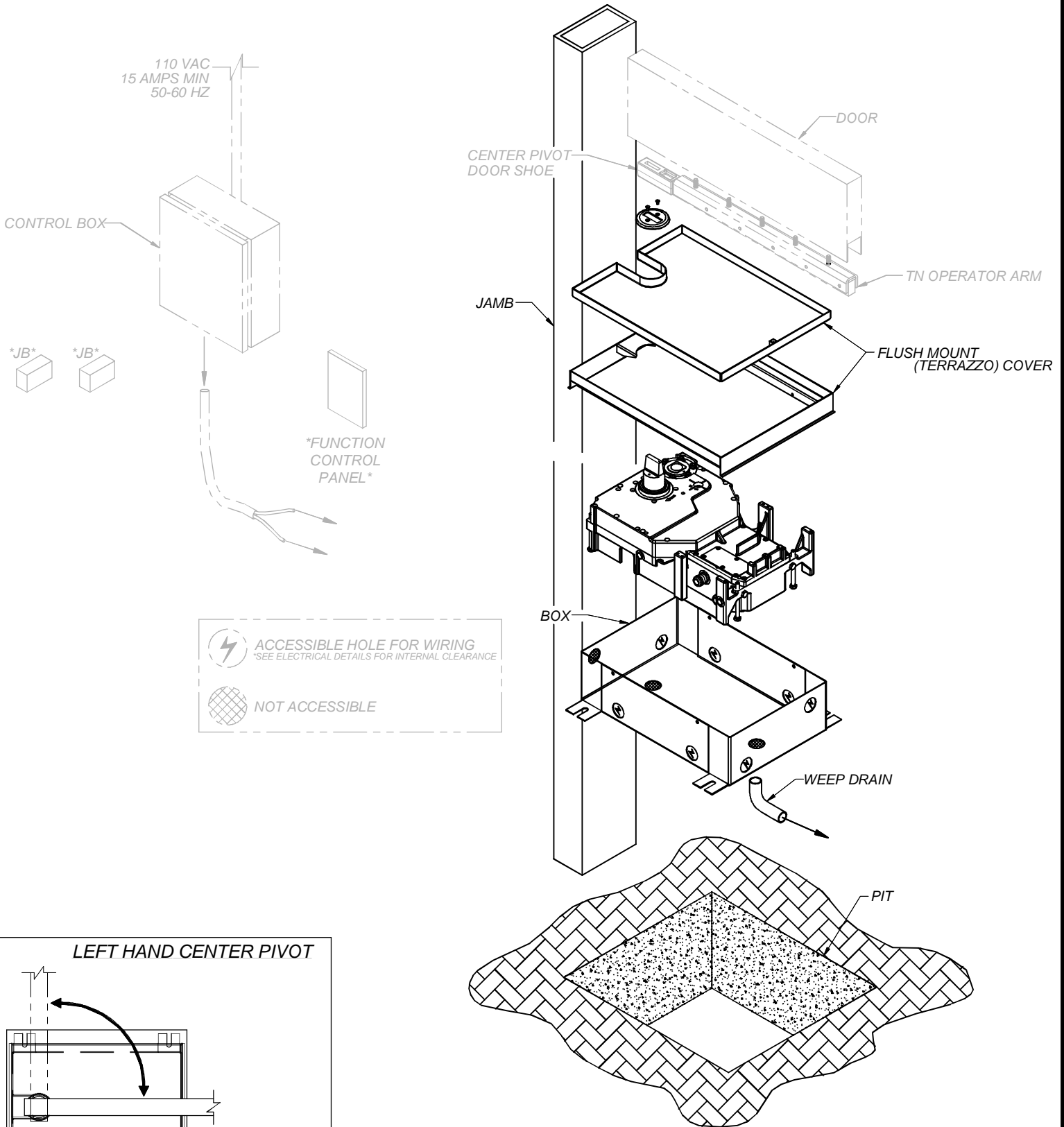


**ELECTRICAL DETAILS**



**PIT PREP DETAILS**

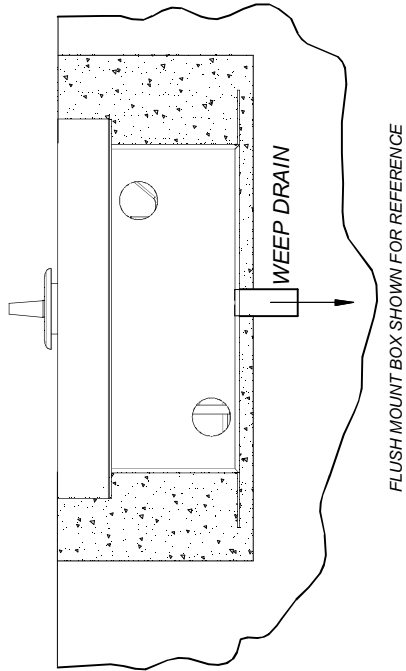
NOTE: "\*" "\*" - INDICATES COMPONENT IS JOB SPECIFIC OR OPTIONAL



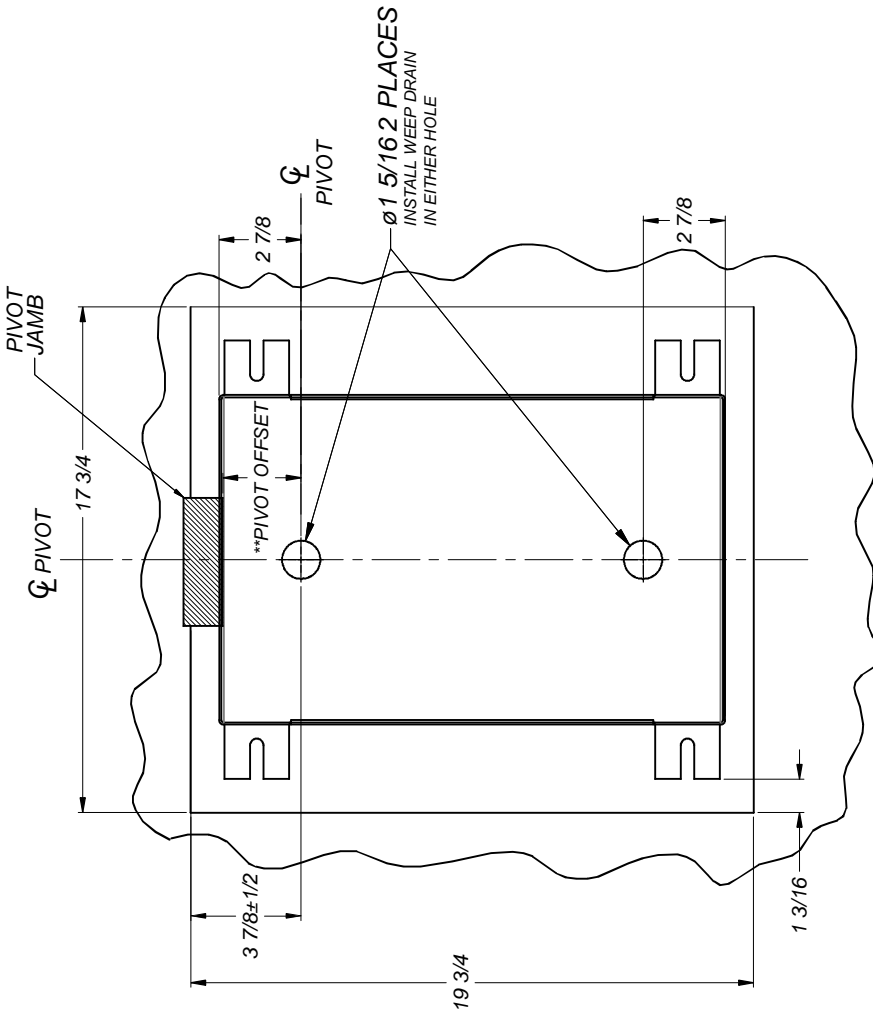
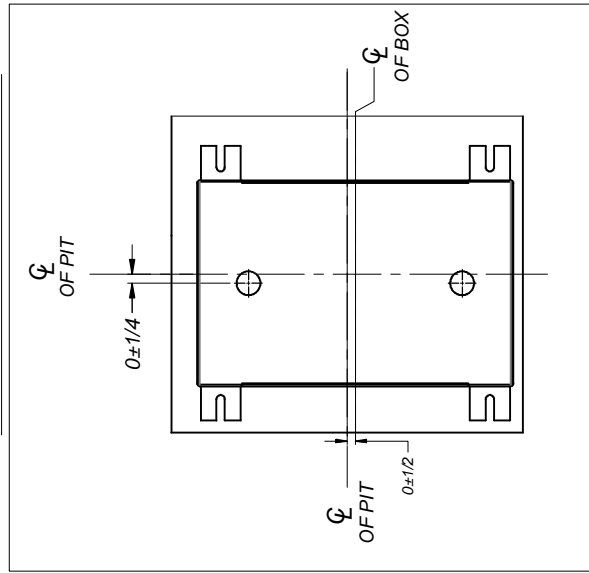
**PIT PREP DETAILS**

- NOTES:**
- (1) Ensure provisions for weep drain and electrical wiring have been made prior to filling the pit with mortar.
  - (2) Weep drain must be installed or manufacturer's warranty will be void.
  - (3) Weep drain hardware to be provided by GC. Weep drain installation & location of termination must comply with city and/or state codes.
  - (4) \*\* = Job specific.

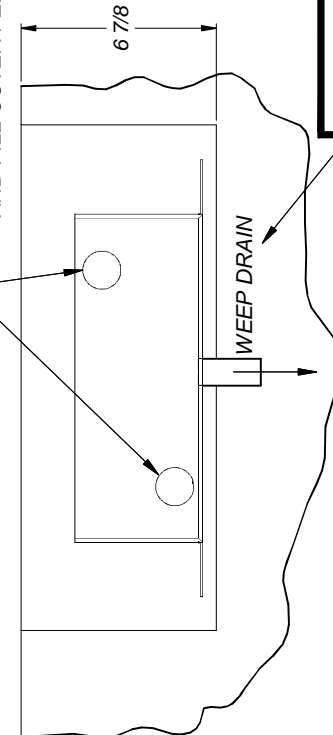
**PIT DIMENSIONS:**  
 19-3/4" L x 17-3/4" W x 6-7/8" D



**BOX LOCATION TOLERANCES**



COVER ANY UNUSED HOLES AROUND BOX  
 AND FILL OUTER PERIMETER WITH MORTAR.



**! WEEP DRAIN MUST BE INSTALLED  
 OR MANUFACTURER'S WARRANTY  
 WILL BE VOID.**