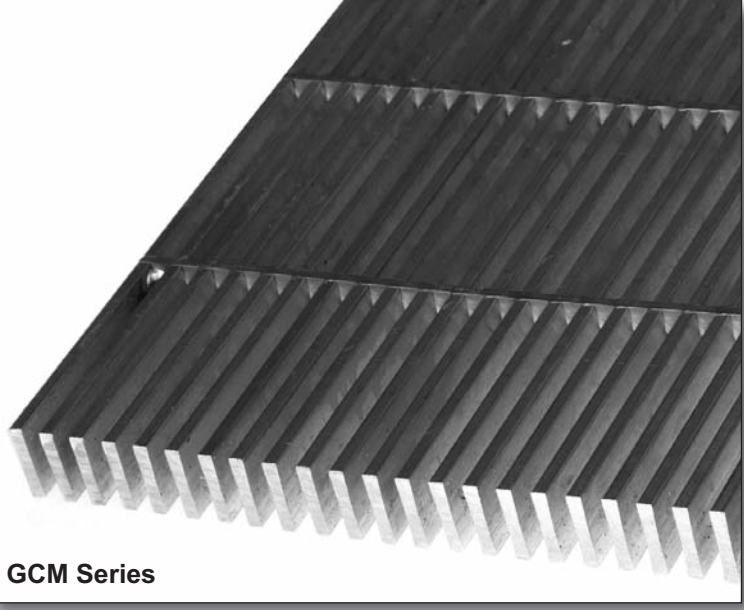




McNICHOLS
1-800-237-3820

GRATINGS and TRENCH COVERS SECTION 05532

Rectangular Bar Grating



GCM Series

GCM Series Close Mesh Press-Locked Grating

McNICHOLS® Close Mesh Grating is desirable for sidewalk, manhole and vault covers, vents and other applications where ventilation and easy access are required. Mill finish stainless appearance may not be aesthetically suitable for all applications. Sandblasting results in a dark gray brushed appearance and is available by special order.

Not recommended for wheel traffic or barefoot pedestrian. Field cutting not recommended.

CONSTRUCTION: Press-locked
MATERIAL: Plain Steel
Stainless Steel 304 (mill finish)
Aluminum
HEIGHTS: 3/4" to 2-1/2" (see chart)
WIDTHS: 36" stock
LENGTH: 12' stock
BAR THICKNESS: 3/16" or 1/8"
BAR SPACINGS: 1/4" to 5/8"

SERIES	GCM-5 (13P4)	GCM-4 (11P4)	GCM-3 (10P4)	GCM-2 (8P4)	GCM-1 (7P4)					
Close Mesh Steel Bar Spacing										
Bearing Bar Size	Item No.	#/SF	Item No.	#/SF	Item No.	#/SF	Item No.	#/SF	Item No.	#/SF
3/4" x 1/8"	GCM-5-75A	5.5			GCM-3-75A	6.9	GCM-2-75A	8.6		
3/4" x 3/16"	GCM-5-75	7.8	GCM-2-75	12.3			GCM-4-75	9.0	GCM-1-75	13.7
1" x 1/8"	GCM-5-100A	7.1			GCM-3-100A	9.0	GCM-2-100A	11.5		
1" x 3/16"	GCM-5-100	10.2	GCM-4-100	11.9			GCM-2-100	16.5	GCM1-100	18.1
1-1/4" x 1/8"	GCM-5-125A	8.9			GCM-3-125A	11.2	GCM-2-125A	14.2		
1-1/4" x 3/16"	GCM-5-125	12.7	GCM-4-125	14.8			GCM-2-125	20.7	GCM-1-125	22.6
1-1/2" x 1/8"	GCM-5-150A	10.8			GCM-3-150A	13.5	GCM-2-150A	17.2		
1-1/2" x 3/16"	GCM-5-150	15.3	GCM-4-150	17.8			GCM-2-150	25.0	GCM-1-150	27.2
1-3/4" x 3/16"	GCM-5-175	17.8	GCM-4-175	20.8			GCM-2-175	29.4	GCM-1-175	31.6
2" x 3/16"	GCM-5-200	20.5	GCM-4-200	23.8			GCM-2-200	33.2	GCM-1-200	36.2
2-1/4" x 3/16"	GCM-5-225	22.7	GCM-4-225	26.5			GCM-2-225	37.3	GCM-5-225	40.1
2-1/2" x 3/16"	GCM-5-250	25.0	GCM-4-250	29.3			GCM-2-250	41.1		

(STOCK)

Gratings that meet ADA spacing requirements are noted with this symbol.

CLOSE MESH GCM SERIES PANEL WIDTHS

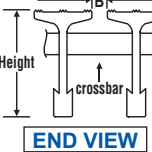
NO. OF BARS	GCM-1					GCM-2					NO. OF BARS	GCM-1		GCM-2		
	*3/16"	*3/16"	*1/8"	*3/16"	*1/8"	*3/16"	*3/16"	*1/8"	*3/16"	*1/8"		*3/16"	*3/16"	*1/8"	*3/16"	
10	4-1/8	4-11/16	5-3/4	6-3/8	7-7/16	7-1/2	35	15-1/16	17-3/16	21-3/8	23-9/16	27-3/4	27-13/16	60	26	29-11/16
11	4-9/16	5-3/16	6-3/8	7-1/16	8-1/4	8-5/16	36	15-1/2	17-11/16	22	24-1/4	28-9/16	28-5/8	61	26-7/16	30-3/16
12	5	5-11/16	7	7-3/4	9-1/8	9-1/8	37	15-5/16	18-3/16	22-5/8	24-15/16	29-3/8	29-7/16	62	26-7/8	30-11/16
13	5-7/16	6-3/16	7-5/8	8-7/16	9-7/8	9-15/16	38	16-3/8	18-11/16	23-1/4	25-5/8	30-3/16	30-1/4	63	27-5/16	31-3/16
14	5-7/8	6-11/16	8-1/4	9-1/8	10-11/16	10-3/4	39	16-13/16	19-3/16	23-7/8	26-5/16	31	31-1/16	64	27-3/4	31-11/16
15	6-5/16	7-3/16	8-7/8	9-13/16	11-1/2	11-9/16	40	17-1/4	19-11/16	24-1/2	27	31-13/16	31-7/8	65	28-3/16	32-3/16
16	6-3/4	7-11/16	9-1/2	10-1/2	12-5/16	12-3/8	41	17-11/16	20-3/16	25-1/8	27-11/16	32-5/8	32-11/16	66	28-5/8	32-11/16
17	7-3/16	8-3/16	10-1/8	11-3/16	13-1/8	13-3/16	42	18-1/8	20-11/16	25-3/4	28-3/8	33-7/16	33-1/2	67	29-1/16	33-3/16
18	7-5/8	8-11/16	10-3/4	11-7/8	13-15/16	14	43	18-9/16	21-3/16	26-3/8	29-1/16	34-1/4	34-5/16	68	29-1/2	33-11/16
19	8-1/16	9-3/16	11-3/8	12-9/16	14-3/4	14-13/16	44	19	21-11/16	27	29-3/4	35-1/16	35-1/8	69	29-15/16	34-3/16
20	8-1/2	9-11/16	12	13-1/4	15-9/16	15-5/8	45	19-7/16	22-3/16	27-5/8	30-7/16	Mill finish stainless appearance may not be esthetically suitable for all applications. Sand-blasting results in a dark gray brushed appearance and is available by special order.	31-1/8	70	30-3/8	34-11/16
21	8-15/16	10-3/16	12-5/8	13-15/16	16-3/8	16-7/16	46	19-7/8	22-11/16	28-1/4	31-1/8			71	30-13/16	35-3/16
22	9-3/8	10-11/16	13-1/4	14-5/8	17-3/16	17-1/4	47	20-5/16	23-3/16	28-7/8	31-13/16			72	31-1/4	35-11/16
23	9-13/16	11-3/16	13-7/8	15-5/16	18	18-1/16	48	20-3/4	23-11/16	29-1/2	32-1/2			73	31-11/16	
24	10-1/4	11-11/16	14-1/2	16	18-13/16	18-7/8	49	21-3/16	24-3/16	30-1/8	33-3/16			74	32-1/8	
25	10-11/16	12-3/16	15-1/8	16-11/16	19-5/8	19-11/16	50	21-5/8	24-11/16	30-3/4	33-7/8			75	32-9/16	
26	11-1/8	12-11/16	15-3/4	17-3/8	20-7/16	20-1/2	51	22-1/16	25-3/16	31-3/8	34-7/8			76	33	
27	11-9/16	13-3/16	16-3/8	18-1/16	21-1/4	21-5/16	52	22-1/2	25-11/16	32	35-1/4			77	33-7/16	
28	12	13-11/16	17	18-3/4	22-1/16	22-1/8	53	22-15/16	26-3/16	32-5/8				78	33-7/8	
29	12-7/16	14-3/16	17-5/8	19-7/16	22-7/8	22-15/16	54	23-3/8	26-11/16	33-1/4				79	34-5/16	Panel widths shown are cut-to-size.
30	12-7/8	14-11/16	18-1/4	20-1/8	23-11/16	23-3/4	55	23-13/16	27-3/16	33-7/8				80	34-3/4	
31	13-5/16	15-3/16	18-7/8	20-13/16	24-1/2	24-9/16	56	24-1/4	27-11/16	34-1/2				81	35-3/16	
32	13-3/4	15-11/16	19-1/2	21-1/2	25-5/16	25-3/8	57	24-11/16	28-3/16	35-1/8				82	35-5/8	
33	14-3/16	16-3/16	20-1/8	22-3/16	26-1/8	26-1/16	58	25-1/8	28-11/16	35-3/4				83	36-1/16	
34	14-5/8	16-11/16	20-3/4	22-7/8	26-15/16	27	59	25-9/16	29-3/16							

SAFE-T-GRID® Extruded T-Bar Series

CONSTRUCTION: Extruded T-Bars with cross bars locked by swaging
MATERIAL: Aluminum
HEIGHTS: 1", 1-1/4", 1-1/2", 2"
WIDTHS: 36-1/4" (TB-626)
36-9/16" (TB-940)
LENGTHS: 24' STOCK
SURFACE: Groove or Grip Tight surface
2 spacings and top flange widths available along with frames and fasteners

NOTE: In chart below, spans listed in the shaded area produce a deflection of 1/4" or less under uniform load of 100 pounds per sq. ft. This deflection is recommended as the maximum to provide pedestrian comfort.

U = safe uniform load, lb./sq. ft.
D = deflection in inches
C = safe concentrated load, lb./ft. of grating width, at mid-span
Theoretical values based on f = 12,000 psi, E = 10,000,000 psi, gross section of bearing bar



Height	Item No. TB-626	"B"	#/SF	Open Area	Item No. TB-940	"B"	#/SF	Open Area
1"		.5615	2.7	47.2%		.2475	3.0	20.8%
1-1/4"		.5615	3.3	47.2%		.2475	4.2	20.8%
1-1/2"		.5615	3.6	47.2%		.2475	4.4	20.8%
2"		.5615	4.1	47.2%		.2475	5.0	20.8%

Other bar sizes and spacings are available, please inquire!

Height	Type	SAFE-T-GRID® Extruded T-Bar											LOAD TABLE		
		1'-0"	1'-6"	2'-0"	2'-6"	3'-0"	3'-6"	4'-0"	4'-6"	5'-0"	5'-6"	6'-0"	6'-6"	7'-0"	
1"	TB626	U	3961	1761	990	634	440	323	248	196	158	131	110	94	81
		D	.033	.076	.135	.212	.305	.415	.543	.688	.845	1.026	1.220	1.436	1.665
		C	1981	1320	990	792	660	566	495	440	396	360	330	305	283
1" STOCK	TB940	D	.027	.061	.108	.169	.244	.332	.434	.549	.678	.820	.976	1.147	1.330
		U	4204	1868	1051	673	467	343	263	208	168	139	117	99	86
		D	.031	.070	.124	.195	.280	.382	.499	.633	.779	944	1.125	1.311	1.532
1-1/4"	TB626	C	2102	1401	1051	841	701	601	525	467	420	382	350	323	300
		D	.024	.056	.099	.156	.224	.305	.398	.505	.623	.754	.897	1.053	1.221
		U	6063	2695	1516	970	674	495	379	299	243	200	168	144	124
1-1/4"	TB940	D	.026	.060	.108	.168	.243	.330	.432	.545	.676	.814	.969	1.144	1.325
		C	3032	2021	1516	1213	1011	866	758	674	606	551	505	466	433
		D	.021	.048	.086	.135	.194	.264	.345	.437	.539	.653	.777	.911	1.058
1-1/4"	TB940	U	6952	3090	1738	1112	772	568	435	343	278	230	193	165	142
		D	.024	.054	.096	.151	.217	.296	.387	.489	.604	.732	870	1.024	1.186
		C	3476	2317	1738	1390	1159	993	869	772	695	632	579	535	497
1-1/2"	TB626	D	.019	.043	.077	.120	.174	.236	.309	.391	.483	.585	.696	817	.948
		U	8084	3593	2021	1293	898	660	505	399	323	267	225	191	165
		D	.022	.051	.091	.142	.205	.279	.364	.461	.568	.688	.821	.960	1.116
1-1/2"	TB940	C	4042	2695	2021	1617	1347	1155	1011	898	808	735	674	622	577
		D	.018	.041	.072	.113	.164	.223	.291	.369	.455	.551	.656	.770	.892
		U	9378	4168	2344	1500	1042	766	586	463	375	310	260	222	191
1-1/2"	TB940	D	.020	.046	.081	.127	.184	.250	.327	.414	.511	619	735	865	1.001
		C	4689	3126	2344	1876	1563	1340	1172	1042	938	853	781	721	670
		D	.016	.036	.065	.102	.147	.200	.261	.331	.409	.495	.589	.691	.802
2"	TB626	U	12692	5641	3173	2031	1410	1036	793	627	508	420	353	300	259
		D	.017	.039	.069	.108	.156	.212	.277	.351	.433	.524	.624	.731	.849
		C	6346	4231	3173	2538	2115	1813	1587	1410	1269	1154	1058	976	907
2"	TB940	D	.013	.031	.055	.086	.12								