



The world's only THX-certified panel

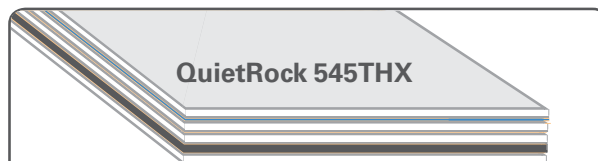
QuietRock 545THX is the only THX-certified sound damping wall and ceiling panel designed to meet the high-end requirements of commercial theaters, recording studios and home theaters. QuietRock 545THX delivers superior sound isolation within demanding media and privacy environments, even at 50 Hz.

QuietRock 545THX Benefits

- Highest performing wall panel in the world
- Delivers STC ratings of 60-80
- Highest total sound loss factor across all frequencies from low to high
- Hangs and finishes like standard drywall
- Outperforms older technologies such as mass loaded vinyl by 60-90%
- Low frequency isolation up to 50dB; high frequency up to 90dB
- Environmentally friendly, lab tested
- Worldwide patents pending

Product Specifications

Model:	QuietRock 545THX
Thickness:	1-3/8"
Tolerance:	Min - 1.300", Max - 1.450"
Weight:	6.7 lbs/ft ²
STC-rated:	60-80
Permeability:	0
R value:	0.88



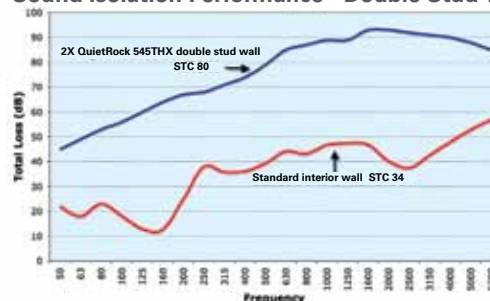
Patent-pending 11-layer ceramic-polymer-gypsum (CPG) composite provides maximum noise reduction.

STC Comparison*

5/8" gypsum	39
6" CMU	45
Soundboard	46
Mass loaded vinyl	45
QuietRock 545THX	60

*in single wood stud construction, 24" OC

Sound Isolation Performance - Double Stud Wall



Applications

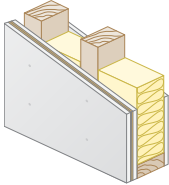
- Home theaters
- Commercial theaters
- Recording studios
- Government
- Offices
- Conference rooms

STCs shown are on 24" wood studs, except for 516.



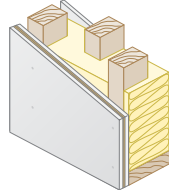
Lowest-Cost Solutions in the Market

Lowest Cost Wall
QuietRock on one side



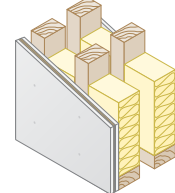
STC: 56*

Staggered Stud Wall
QuietRock on one side



STC: 64*

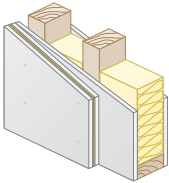
Double Stud Wall
QuietRock on one side



STC: 71*

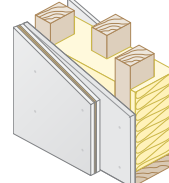
Retrofit and Remodeling

Single Stud Wall
QuietRock on one side
of existing drywall



STC: 58*

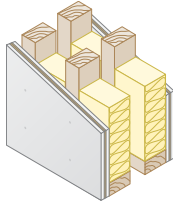
Staggered Stud Wall
QuietRock on one side
of existing drywall



STC: 66*

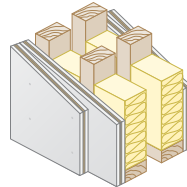
High Performance

Double Stud Wall
QuietRock on both sides



STC: 75

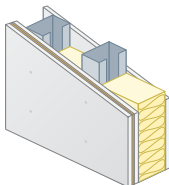
Double Stud Wall
Double layer of QuietRock
on both sides



STC: 80

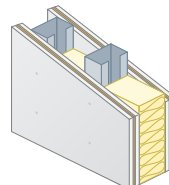
Steel - Single layer assembly noise reduction

Lowest Cost Wall
QuietRock on one side



STC: 62*

Single Stud Wall
QuietRock on both sides



STC: 66*

*Estimate

The information contained in this document is for general information purposes only. Features and specifications are subject to change. The diagrams and stated STC ratings listed are intended to serve as a guide. Construction practices have an influence on final STC ratings. Serious Materials cannot guarantee actual STC ratings. Flanking sound patterns, the integrity of the wall, and floor and ceiling construction are important factors in effective sound control.

STCs shown are on 24" wood studs.