



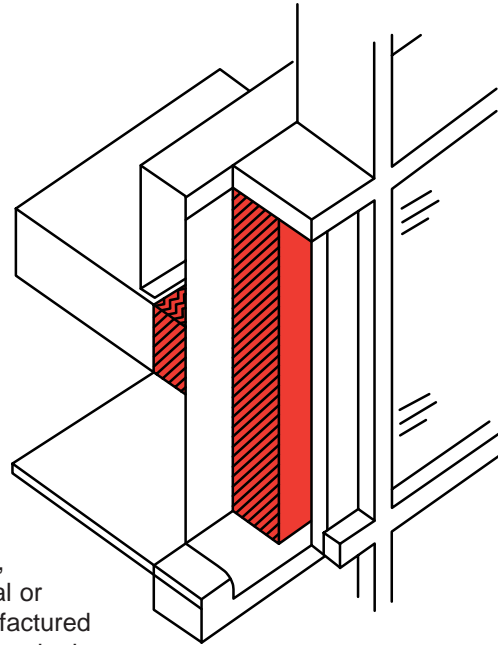
## CURTAIN WALL (CW) INSULATION

### PRODUCT NAME

FIBREX CURTAIN WALL (CW)  
CW 30, 50, 70, 90  
CW Series - FSK Faced  
CW Series - BMF (Black Mat Faced)

### MANUFACTURER

FibreX Insulations Inc.  
561 Scott Road  
Sarnia, Ontario N7T 7L4  
Phone: 1-800-265-7514  
Fax: 1-800-363-4440



### PRODUCT DESCRIPTION

FibreX Curtain Wall Insulation provides superior fire resistance, acoustical and thermal properties when installed in glass, metal or stone spandrel systems or in fabricated metal pans. It is manufactured from basaltic rock, utilizing patented technology, with a melting point in excess of 2000°F (1093°C).

The fibres are bonded and preformed into five types of self-supporting, semi-rigid or rigid boards, that provide superior handleability and easy fabrication/installation capabilities.

FibreX Curtain Wall Insulations are manufactured plain or unfaced and faced with FSK or Black Mat - see product options.

### PRODUCT INFORMATION

STANDARD SIZES	24" X 48" (610mm X 1220mm) Custom, metric and special sizes available
STANDARD THICKNESSES	1" to 4" (25mm to 102mm) 1/2" (13mm) increments
MOISTURE ADSORPTION	less than 0.1% by volume when tested in accordance with ASTM C553, section 14
SURFACE BURNING CHARACTERISTICS	Flame Spread 5 Smoke Developed 0 when tested in accordance with CAN4-S102, ASTM E-84, and UL 723
NON-COMBUSTIBILITY	material listed as non-combustible by ULC and ULI; tested in accordance with CAN4-S114 and ASTM E-136
NON-CORROSIVE	will not cause or contribute to corrosion; NRC 1.36, ASTM C692, ASTM C795 and ASTM C871
PRODUCT OPTIONS	Please call Fibrex for all facing capabilities. CW 30, 50, 70, 90 (Plain or Unfaced) CW Series - FSK Faced (CW 30FSK, 50FSK, 70FSK, 90FSK) CW Series - Black Mat Faced (CW 50BMF, 70BMF, 90BMF)

## THERMAL PERFORMANCE (ASTM C518)

FIBREX CURTAIN WALL (CW) 50			FIBREX CURTAIN WALL (CW) 70 AND 90		
THICKNESS	R VALUE	RSI	THICKNESS	R VALUE	RSI
1"	4.20	.74	1"	4.35	.76
1.5"	6.30	1.11	1.5"	6.52	1.15
2"	8.40	1.48	2"	8.70	1.53
2.5"	10.50	1.84	2.5"	10.90	1.91
3"	12.60	2.21	3"	13.05	2.29
3.5"	14.70	2.58	3.5"	15.22	2.67
4"	16.80	2.95	4"	17.40	3.06

## SOUND ABSORPTION COEFFICIENTS

1/3 OCTAVE CENTER FREQUENCY (HZ)								
TYPE	THICKNESS	125	250	500	1000	2000	4000	NRC*
CW 50	1 1/2" (38mm)	.13	.48	1.02	1.08	1.02	1.01	.90
	2" (51mm)	.20	.61	1.07	1.06	1.04	1.07	.95
	4" (102mm)	.88	1.14	1.17	1.08	1.06	1.10	1.10
CW 70	1 1/2" (38mm)	.18	.62	1.08	1.08	1.03	1.07	.95
	2" (51mm)	.25	.85	1.15	1.10	1.04	1.06	1.05
	3" (76mm)	.80	1.07	1.11	.99	.98	.96	1.05

\* Noise Reduction Coefficient

Tested in accordance with ASTM C423 and E795. The test specimen was applied directly against the test surface.

## SPECIFICATION COMPLIANCE

ASTM C665, TYPE 1 and TYPE 2 (Class A)

ASTM C612, TYPE I, II, III and IV

(CAN/CGSB 51.10-92 (Type 2, Class 4)

DND - CONSTRUCTION MATERIALS BOARD (SCHEDULE 01000)  
REFERENCE NO. 07212 - 03

CITY OF NEW YORK MEA 341-98-M

FED. SPEC. HH-558B

CONFORMS TO CAN/ULC S702.2 (formerly CSA A101-M83)

FACING OPTIONS CW FSK PRODUCT (1"-4" TK)(ALL TYPES)  
CW 50 BMF (3"-6")  
CW 70 BMF (2"-6")  
CW 90 BMF (1.5"-6")



**FIBREX**  
Insulations Inc.®

561 SCOTT ROAD  
SARNIA, ONTARIO CANADA N7T 7L4  
<http://www.fibrex.on.ca>

**CUSTOMER SERVICE: 1-800-265-7514**  
1-519-336-7770  
FAX: 1-800-363-4440

Technical Information:  
Please ask for the name of your area representative.