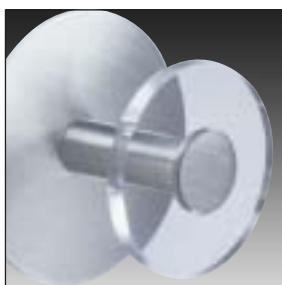
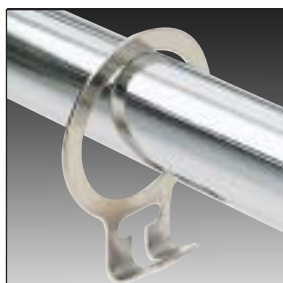
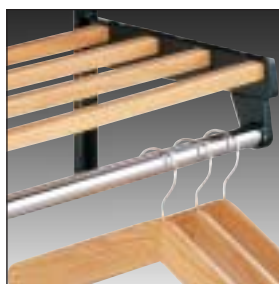
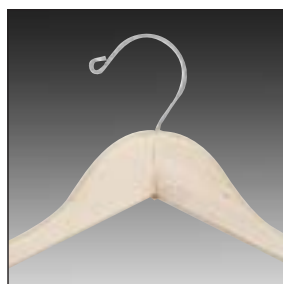
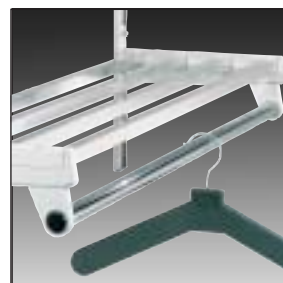


ARCHITECTURAL SERIES





HOOKS & HOOK PANELS

Stylish hooks in both traditional and contemporary styles. Specify for unique garment storage solutions or simply as an architectural element to enhance a space. See specifications for available color choices.

SPECIFICATIONS: Furnish and install Magnuson Group Model...

RAMA-1 WALL MOUNTED COAT HOOK constructed of injected polypropylene. Hooks can be single-mounted or fixed on vertical supports. Choose from manufacturers' standard finishes of blue, vanilla or anthracite.

MANHATTAN-1 WALL MOUNTED COAT HOOK constructed of injected polypropylene and finished in anthracite or lined in black or brown imitation leather. Hook consists of a wall mounted support in anthracite with the hook fixed to the support.

K-10/K-10T COAT HOOK finished in brushed aluminum. **Model K-10** has center knob in fixed position. **Model K-10T** has center knob that extends to 4" to increase capacity.

K-50/FMP die cast zinc garment bag hook in Brushed Chrome or Polished Chrome finish. Mounts directly to wall or door.

K-1202 COAT HOOK in brushed stainless finish with polycarbonate retainer for use with one hanger.

HH-1 SAFETY RELEASE HOOK is constructed of high strength polycarbonate and is available in Red, Beige, Blue, Graphite and Light Gray finishes. Designed to support coats, backpacks, purses and other articles weighing up to 26 lbs. When weight limit is exceeded, the hook automatically releases and the article falls then automatically resets itself in the upright position. Mount direct to wall or on panel.

K-60 WALL KNOB in brass matte nickel plated finish. Mounts directly to wall or door.

K-801 SINGLE PRONG COAT HOOK in Silver anodized aluminum finish. Hook can be mounted directly to wall or door or to wood or laminate panel.

K-802 DOUBLE PRONG COAT HOOK in Silver anodized aluminum finish. Hook can be mounted directly to wall or door or to wood or laminate panel.

K-81 SINGLE PRONG HAT AND COAT HOOK in Silver anodized aluminum finish. Hook can be mounted directly to wall or door or to wood or laminate panel.

K-82 DOUBLE PRONG HAT AND COAT HOOK in Silver anodized aluminum finish. Hook can be mounted directly to wall or door or to wood or laminate panel.

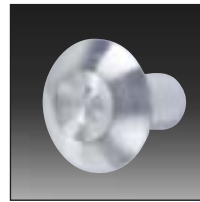
K-21 SERIES HAT AND COAT HOOK in anodized aluminum finish. Specify finish from manufacturers' standard offering of Silver (K21S), Chrome (K21C), Bronze (K21B) or powder coated (K21N, specify color; Black, Sandstone, Blueberry, Evergreen). Hook can be mounted directly to wall or door or to wood or laminate panel.

K-41ST HAT AND COAT HOOK in stainless steel finish. Hook can be mounted directly to wall or door or on wood or laminate panel. Also available on stainless steel panel (see page 3)

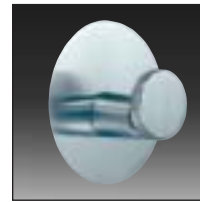
K-50 SERIES COAT HOOK constructed of die cast zinc. Specify finish from manufacturers' standard offering of Chrome (K50C), Brushed Chrome (K50BC), Polished Brass (K50PB), or powder coated (K50N, specify color, Black, Sandstone, Blueberry, Evergreen). When mounting to wall or door, use FM (front mount) version, i.e.,



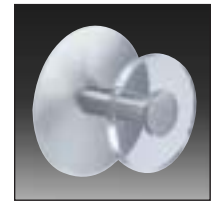
RAMA-1



K-10



K-50/FMP



K-1202



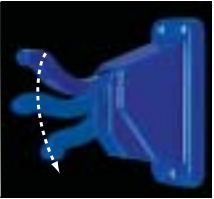
MANHATTAN-1



K-10T



HH-1



K-60



K-801



K-802



K-81



K-82



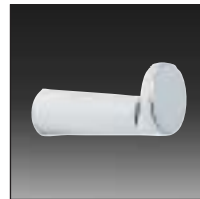
K-21 SERIES



K-41ST



K-50 SERIES



K-55 SERIES

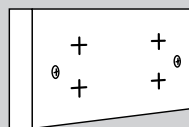


K-71C

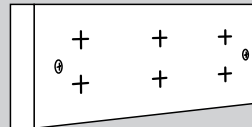


K-15

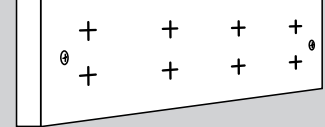
K SERIES HOOK PANEL



2 HOOK PANEL



3 HOOK PANEL



4 HOOK PANEL

LAMINATE HOOK PANELS Many of the above hooks can be mounted to laminate panels in configurations of 2, 3 or 4 hook units. Panels are available in Oak, Walnut, Mahogany, Cherry, Black or Featherstone Gray laminate.

SPECIFICATIONS: Furnish and install Magnuson Group laminate hook panel with Hook Model _____ on 4" x 12" 2-hook panel (2K), 4" x 18" 3 hook panel (3K) or 4" x 34" 4 hook panel(4K). Select hook and panel color from manufacturers' standards.

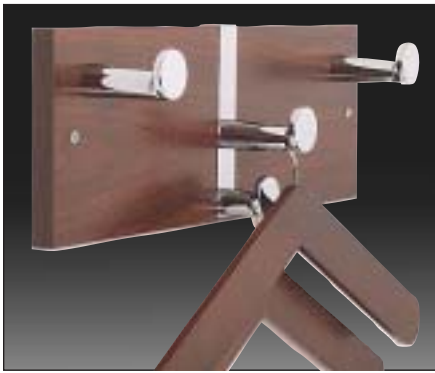
K50C/FM for chrome front mount hook.

K-55 SERIES COAT HOOK constructed of die cast zinc. Specify finish from manufacturers' standard offering of Chrome (K55C), Brushed Chrome (K55BC), Polished Brass (K55PB), or powder coated (K55N, specify color; Black, Sandstone, Blueberry, Evergreen). When mounting to wall or door, use FM (front mount) version, i.e.,

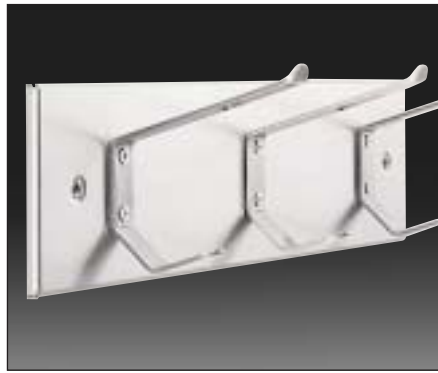
K55C/FM for chrome front mount hook.

K-71C SINGLE PRONG UTILITY STEEL COAT HOOK in polished chrome finish.

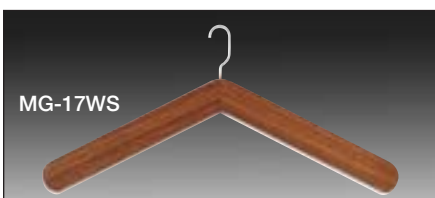
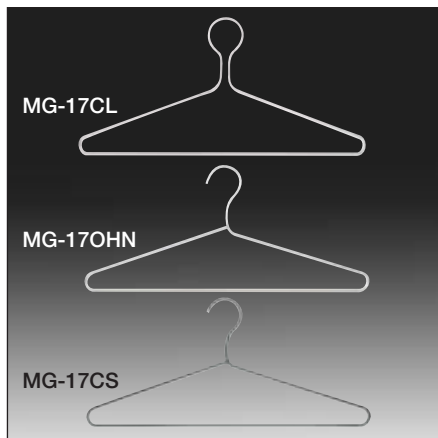
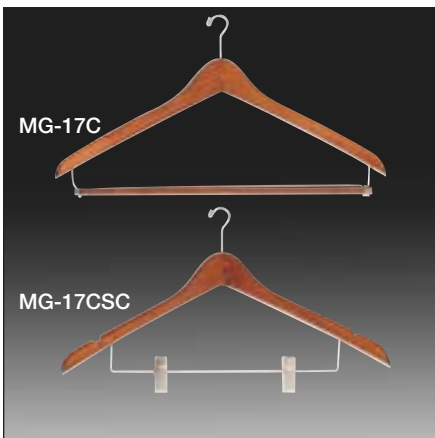
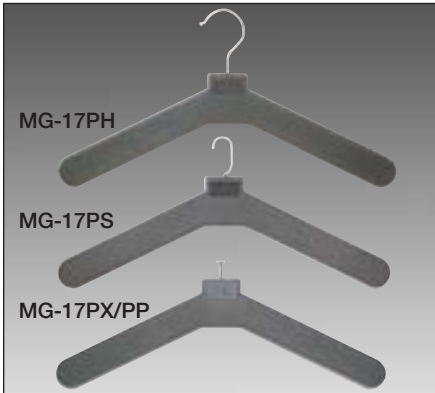
K-15 COAT AND HAT HOOK constructed of black nylon. Hook can be mounted directly to wall or door or on wood or laminate panel.



PC-550



K41ST



PC-550 EXECUTIVE WALL COSTUMERS
The **PC550** executive wall costumer features a 6" x 18" x 3/4" wood laminate panel with chrome die cast knobs and two matching wood hangers with mini hook. Laminate panels are available in Oak, Walnut, Mahogany, Cherry and Black. Can also be provided in unfinished red oak for staining in field.

The **PC550N** (not pictured) features a Featherstone Gray laminate panel, with knobs painted in our standard powder coat finishes of Black, Sandstone, Blueberry or Evergreen with matching painted hangers.

SPECIFICATIONS: Furnish and install Magnuson Group Model **PC550** executive wall costumer with wood laminate panel, chrome knobs and two matching wood

hangers. Select laminate finish from manufacturers' standard colors.

Furnish and install Magnuson Group Model **PC550N** executive wall costumer with Featherstone Gray panel and hooks and hangers in manufacturers' standard colors.

K41ST STAINLESS STEEL HOOK PANELS

The K41ST hook panel is available with 2 hooks on 4" x 12" stainless steel panel (2K41ST), 3 hooks on 4" x 18" stainless steel panel (3K41ST), or 6 hooks on 4" x 36" stainless steel panel (6K41ST).

SPECIFICATIONS: Furnish and install Magnuson Group Model _____ stainless steel hook panel with _____ K41ST stainless steel hooks on _____ stainless steel panel.

HANGERS AND RECEPTACLES

Magnuson Group offers a variety of hanger styles in plastic, wood and steel finishes. When used in conjunction with our coat racks, we recommend a maximum of 5 hangers per foot of rack.

SPECIFICATIONS: Furnish and install Magnuson Group Model _____ coat hanger spaced _____ per foot of rack.

MG17PM MOLDED POLYSTYRENE HANGER with theft deterrent slotted top for use on wire mesh shelves. Choose from manufacturers' standard colors of Charcoal Gray or Black.

MG17PH MOLDED POLYSTYRENE HANGER with 1-1/2" nickel plated steel open hook. Choose from manufacturers' standard colors of Charcoal Gray or Black.

MG17PS MOLDED POLYSTYRENE HANGER with 5/8" nickel plated steel mini hook for use on 5/8" hanger rod. Choose from manufacturers' standard colors of Charcoal Gray or Black.

MG17PX MOLDED POLYSTYRENE HANGER with T-top for use with SR34 receptacle. Choose from manufacturers' standard colors of Charcoal Gray or Black.

MG17PP MOLDED POLYSTYRENE HANGER with parallel T-top for use with R1.5 receptacle. Choose from manufacturers' standard colors of Charcoal Gray or Black.

MG17 SERIES WOOD HANGERS with 1-1/2" nickel plated steel open hook. Choose from manufacturers' standard finishes of Walnut (Model MG17WH), Oak (Model MG17OH), Mahogany (Model MG17MH), Cherry (MG17CH), Black (Model MG17BKH), Blueberry (Model MG17BLH), Evergreen (MG17EVH) or Sandstone (MG17SAH).

MG17 Series wood hangers are also available with 5/8" nickel plated steel mini hook for use on 5/8" hanger rod. Specify model MG17WS (Walnut), MG17OS (Oak), MG17MS (Mahogany), MG17CHS (Cherry), MG17BKS (Black), MG17BLS (Blueberry), MG17EVS (Evergreen) or MG17SAS (Sandstone).

MG17H LIGHT WAXED HARDWOOD HANGER in natural finish with 1-1/2" nickel plated steel open hook.

MG17B LIGHT WAXED HARDWOOD HANGER in natural finish with ball top for use with R1.5 or SR34 receptacle.

MG17C CONTOURED HARDWOOD HANGER with locking trouser bar and 5/8" nickel plated mini hook for use on 5/8" hanger rod. Choose from manufacturers' standard finishes of Natural or Dark Brown stain. Also available with 1-1/2" open hook for use on 1" hanger rod.

MG17CSC CONTOURED HARDWOOD HANGER with skirt clips and 5/8" nickel plated mini hook for use on 5/8" hanger rod. Choose from manufacturers' standard finishes of Natural or Dark Brown stain. Also available with 1-1/2" open hook for use on 1" hanger rod.

MG17CL NICKEL PLATED 3/16" STEEL HANGER with closed loop. Fits up to 1-1/4" o.d. rod.

MG17OHN NICKEL PLATED 3/16" STEEL HANGER with 1-1/2" open hook.

MG17CS VINYL COATED 3/16" STEEL HANGER with 1-1/2" open hook. Charcoal Gray finish.

SR34 VINYL COATED STEEL RECEPTACLE fits 3/4" square tubing. For use with ball top or T-top hangers. Choose from manufacturers' standard finishes of Charcoal Gray, Black or Sandstone.

R1.5 NICKEL PLATED STEEL RECEPTACLE fits 1-1/4" o.d. hanger rods. For use with ball top or parallel T-top hangers.



WALL RACKS

Wall mounted coat racks are custom built to your length requirements. One or two shelves can be vertically adjusted in their steel channels to provide needed space between shelves and appropriate hanging distance to the floor. WH hanger bar style, WK hook style and WU boot shelf or utility shelf style are available in natural oak (OK), anodized aluminum (AL) or powder coated steel (ST) finish.

SPECIFICATIONS: Furnish and install Architectural Series Model number _____ coat and hat racks as manufactured by Magnuson Group Inc.

Shelves shall consist of four 3/4" square 18 gauge powder coated steel, silver anodized aluminum or natural oak shelf bars.

Brackets shall be 18 gauge die formed and welded box construction steel arm and back plate with bracket cap to positively hold and enclose tube ends. Wall mounts shall be 16 gauge formed steel "U" channels to provide large load bearing surface on wall and height adjustment of shelves; to be fitted with molded end enclosures.

Hooks shall be 14 gauge die formed steel, vinyl coated for safety and rust resistance, three pronged design provides high storage capacity.

HANGER STYLE WH SERIES: Wall rack hanger bar shall be 1" o.d. 18 gauge chrome plated round steel tube plugged at ends. Optional hangers shall be provided of manufacturers' Model _____ spaced _____ hangers per linear foot of hanger bar. Available with one (WH01A) or two (WH02A) shelves which can be vertically adjusted.

HOOK STYLE WK SERIES: Triple prong vinyl coated steel hooks (Model K73) shall be mounted on 2nd and 4th tubes per manufacturers' standard arrangement and number. Hooks shall be of manufacturers' standard colors of Gray, Black or Sandstone as selected by architect. Available with one (WK01A) or two (WK02A) shelves which can be vertically adjusted.

UTILITY/BOOT SHELF WU SERIES: WU01A single shelf boot rack shall be mounted _____ inches AFF in specified length.

WU01A can be used as a utility shelf or in conjunction with hangers and receptacles mounted on first tube. Receptacles shall be Model SR34 spaced _____ per foot with MG17B ball top hardwood hangers or MG17PX T-top plastic hangers.

UTILITY HOOK STRIP WEX SERIES: Model K-73 triple prong vinyl coated hooks mounted on 3/4" square 18 gauge steel tube provide additional compact coat or book bag storage. Mount directly to wall or combined in wall channels of Model WU, WH and WK wall racks.

MODEL K-73 VINYL COATED TRIPLE PRONG STEEL COAT HOOKS fit 3/4" square tubing and are standard on WK and WEX Series. Charcoal Gray, Black or Sandstone vinyl coated finish.

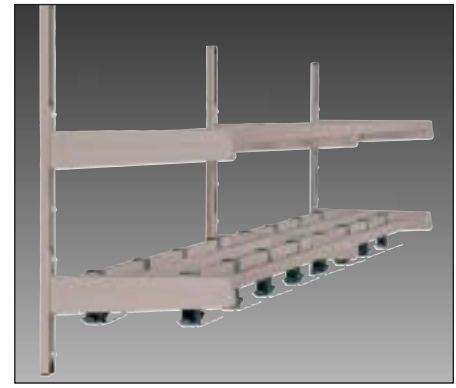
STANDARD STEEL COLORS: Gray, Sandstone, Evergreen, Black or Blueberry powder coat.

SHELF TUBES: Choose from manufacturers' standard steel colors or Silver anodized aluminum or natural oak shelf bars.

SHELF BRACKETS: Choose from manufacturers' standard steel colors of Gray, Sandstone, Evergreen, Black or Blueberry powder coated steel finish.



WK01A W/WU01A BOOT SHELF



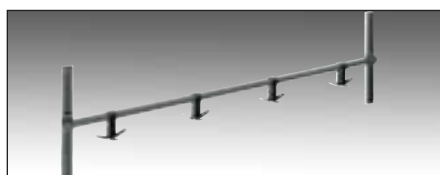
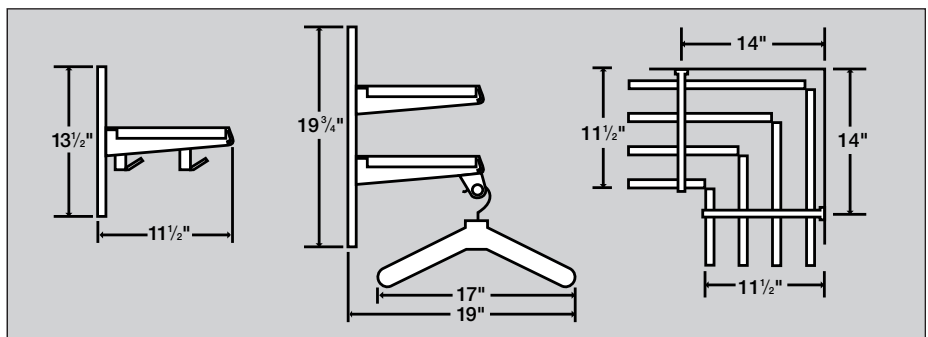
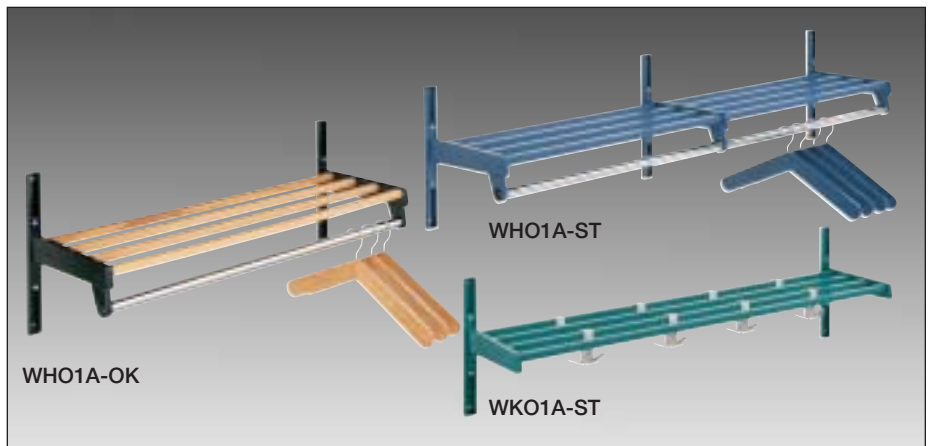
WK02A-ST



WH01A-AL



WU01A-ST W/SR34 & MG17B



WEX HOOK STRIP



K-73



DHA-4 W/CBA CASTER BASE

DKA-5 W/CBA CASTER BASE



SHA-3

SKA-3

FLOOR RACKS

Floor standing single and double faced coat racks are available in 3, 4 and 5 ft basic length. Add-on units in 3, 4 and 5 ft lengths make any lengths over 5 ft possible in 1' increments. Chrome plated 1" o.d. hanger rod accepts the hanger of your choice on hanger style SHA (single sided) or DHA (double sided). Hook style units SKA (single sided) or DKA (double sided) are furnished with K73 vinyl coated steel triple prong hooks. Optional locking casters with shock braces provide easy mobility (Model CBA). All floor standing racks are one shelf high.

SPECIFICATIONS: Furnish and install Architectural Series Model number _____ coat and hat racks as manufactured by Magnuson Group Inc.

Shelves shall consist of four 3/4" square 18 gauge steel or anodized aluminum tubes.

Brackets shall be 18 gauge die formed and welded box construction steel arm and back plate with bracket cap to positively hold and enclose tube ends.

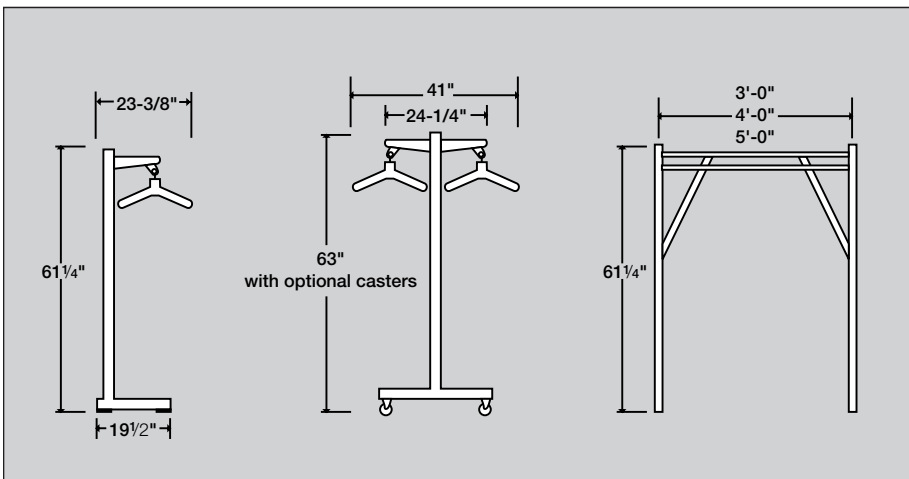
Frames shall be 18 gauge 2-1/2" x 1" welded tubular steel with color coordinated molded tubing closures and base feet, diagonally braced for extreme strength and rigidity. Specify single or double face.

Hooks shall be 14 gauge die formed steel, vinyl coated for safety and rust resistance, three pronged design provides high storage capacity.

HANGER STYLE SHA/DHA SERIES: Single face (SHA) or double face (DHA) hanger style floor rack shall include 1" o.d. 18 gauge chrome plated steel hanger bar plugged at ends. Hangers shall be provided of manufacturers' type _____ spaced _____ hangers per linear foot of hanger bar.

HOOK STYLE SKA/DKA SERIES: Single face (SKA) or double face (DKA) hook style floor racks shall include K73 triple prong vinyl coated steel hooks on 2nd & 4th tubes spaced per manufacturers' standard. Hook color to be selected by architect from manufacturers' standard colors.

CBA CASTER BASE ASSEMBLY: Optional caster base assembly with shock braces and 2" locking casters provide easy mobility.



STANDARD COLORS

SHELF TUBES: Choose from manufacturers' standard colors of Gray, Sandstone or Black powder coated steel or Silver anodized aluminum.

FRAMES: Choose from manufacturers' standard colors of Medium Gray, Sandstone or Black powder coated steel.

HOOKS: Choose from manufacturers' standard colors of Black, Charcoal Gray or Sandstone vinyl coated steel.



FARGO SERIES

The Fargo Series features wall mounted as well as floor standing/wall supported units for garment storage. Basic and add on units make any length possible. Optional shelves, hooks and open hook or theft deterrent hangers can be added.

ESCUADRAS SPECIFICATIONS: Escuadras features aluminum bars with cast aluminum brackets. Double bar units include FCO ABS plastic hooks. Add on units make longer lengths possible. Additional hooks are optional as are open hook or theft deterrent hangers. Can be ordered with black powder coated steel shelf.

Furnish and install Escuadras Model _____.

FE-1/60 single aluminum bar with cast aluminum brackets, 28 inches long or MODEL **FE-1/100** 44 inches long. Use add on MODEL **FEP-1/60** (26" long) or MODEL **FEP-1/100** (44" long) to create longer lengths.

FE-2/60 double aluminum bar with cast aluminum brackets, 28 inches long with four MODEL **FCO** black ABS plastic hooks, or MODEL **FE-2/100** 44 inches long with six MODEL **FCO** black ABS plastic hooks. Use add on MODEL **FEP-2/60** (26 inches long w/4 FCO hooks) or MODEL **FEP-2/100** (42 inches long w/6 FCO hooks) to create longer lengths. Hooks are movable along back bar.

Add optional black powder coated steel shelf MODEL **FS-60** (24 inches long) or MODEL **FS-100** (40 inches long).

MODEL **FPE** BLACK POLYURETHANE HANGER with 1-1/2" open hook.

MODEL **FAH** BLACK POLYURETHANE HANGER with theft deterrent ball top and receptacle.

MODEL **FCO** BLACK ABS PLASTIC COAT HOOK. Can be used on Linear or Escuadras models.

LINEAR SPECIFICATIONS: Linear features an extruded aluminum profile in four sizes with FCO ABS plastic hooks included. Units can be mounted end to end to achieve longer lengths. Additional FCO hooks can be added as necessary and all can be moved along the extruded aluminum profile.

Furnish and install Linear Model _____.

FL-1/20 + 2 FCO extruded aluminum hook strip 8 inches long with 2 ABS plastic hooks;

FL-1/30 + 3 FCO extruded aluminum hook strip 12 inches long with 3 ABS plastic hooks;

FL-1/60 + 4 FCO extruded aluminum hook strip 24 inches long with 4 ABS plastic hooks;

FL-1-100 + 6 FCO extruded aluminum hook strip 40 inches long with 6 ABS plastic hooks.

Mount units end to end to achieve longer lengths. Choose from manufacturers' standard colors of Gray or Black aluminum. **FCO** hooks available in black only.

FSG-2 SPECIFICATIONS: The Fargo **FSG-2** system features aluminum profiles that hold a 40" or 79" long bar on each side of profile. Bars attach from profile to profile and can be secured to wall with cast aluminum wall supports and accommodate conventional (FPE) or anti-theft (FAH) coat hangers or FCO coat hooks.

Furnish and install MODEL **FSG-2** double-sided wardrobe system in quantity required to achieve length per project specifications. Provide MODEL **FB-100** (40" long) aluminum bars between **FSG-2** units to achieve required overall length. Mount end of bars to cast aluminum wall supports MODEL **FSP**. Choose from manufacturers' standard colors of Black or Gray for Model **FSG-2**. Furnish Model _____ (hanger or hook) _____ per foot of bar.



FARGO ESCUADRAS FE1/60 W/FS60 SHELF



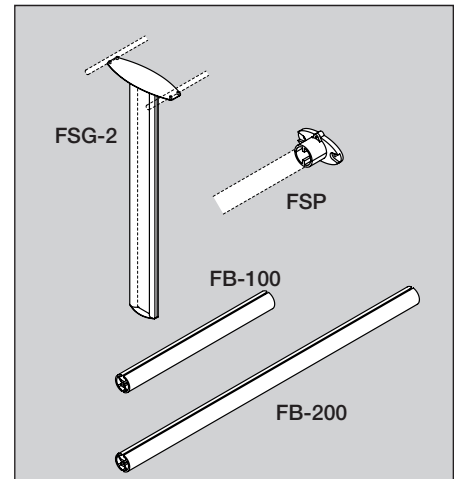
FARGO LINEAR

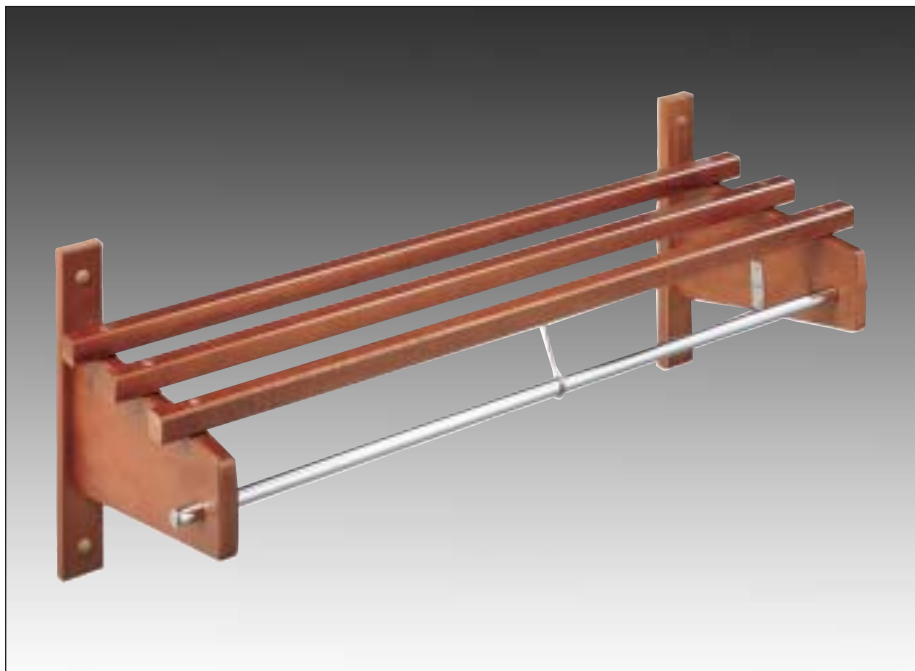


FARGO ESCUADRAS FE2/60 W/FS60 SHELF

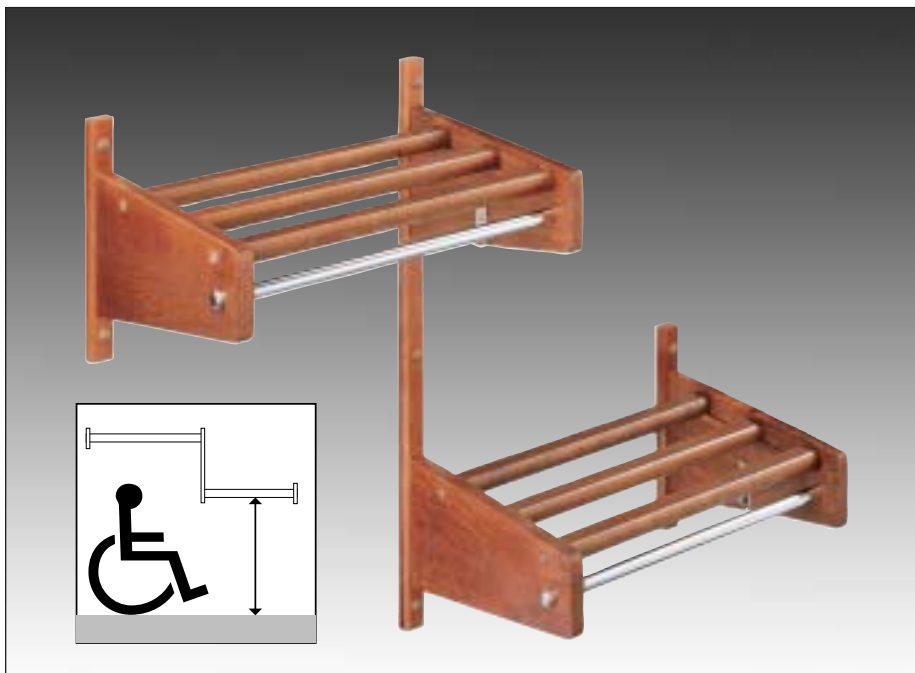


FARGO FSG-2





MC-HWA



MC-HWA-2L



HOSPITALITY RACKS

Wall mounted coat racks are custom built to your length requirements. Choose from single shelf **MC-HWA** racks, or from split level **MC-HWA-2L** ADA compliant racks. Units feature a 5/8" diameter chrome hanger rod for theft deterrent mini hook hangers and are available in Victorian Cherry or Mahogany stain.

SPECIFICATIONS: Furnish and install Magnuson Group Model _____.

MC-HWA hardwood stained guest room closet rack. Shelf consists of three 1" square hardwood slats mounted to hardwood brackets and backplate. Hanger rod is 5/8" chrome plated steel for use with theft deterrent mini hook hangers. Hooks are single prong steel chrome plated mounted to the interior of each bracket. Choose from manufacturers' standard colors of Mahogany or Victorian Cherry.

MC-HWA-2L hardwood stained split level handicapped accessible guest room closet rack. Unit consists of hardwood brackets and backplates with a center backplate that mounts two brackets and a 5/8" o.d. chrome plated steel hanger rod for use with theft deterrent mini hook hangers for each level. Hooks are single prong steel chrome plated mounted to the interior of each bracket. Shelf consists of three 1" square hardwood slats for each shelf. Choose from manufacturers' standard colors of Mahogany or Victorian Cherry.

USR UNDERSHELF ROD AND BRACKET SETS

USR under shelf rods are available with either a 1" o.d. chrome rod (MODEL USR1000) or with a 5/8" o.d. chrome rod (MODEL USR625) (for use with mini hook hangers). These units are available in custom lengths and mount to the underside of any existing shelf. Brackets are Medium Gray powder coat finish.

SPECIFICATIONS: Furnish and install Magnuson Group Model **USR1000** 1" o.d. undershelf rod and bracket sets in lengths required per plans.

Furnish and install Magnuson Group Model **USR625** 5/8" o.d. undershelf rod and bracket sets in lengths required per plans.



MEGA RAK™

Mega Rak™ can be wheeled into place and opened at a moments notice to meet the requirement for quick set up of a large capacity wraps storage area close to the need. Available in six or eight foot models, **Mega Rak™** is the right choice when compact storage, large capacity and quick relocation is needed.

Model MR611H (6 ft hanger style) and **MR611K** (6 ft hook style) feature black frame with tubular steel shelves. Hanger style features 1" o.d. chrome plated steel hanger rods which accommodate up to 72 hangers (sold separately, see hanger **Model MG17PH**). Hook style unit includes 40 triple prong vinyl coated steel hooks for a capacity of 120 coats. Both units include 4" locking rubber tire ball bearing casters.

Model **MR801H** (8 ft. hanger style) and **MR801K** (8 ft hook style) feature charcoal gray frame with medium gray wire mesh shelves. Hanger style unit accommodates up to 100 hangers (open hook or theft deterrent slotted top, sold separately. See Models **MG17PM** and **MG17PH**). Hook style unit includes 48 triple prong vinyl coated steel hooks for a capacity of 144 coats. Both units include 4" locking rubber tire ball bearing casters.

All units fold compactly for storage when not in use and are shipped completely assembled.

SPECIFICATIONS: Furnish and install Magnuson Group **Mega Rak™** Model _____.

MR611H 6 ft. hanger style portable folding rack with capacity for 72 open hook hangers on 1" o.d. chrome plated steel hanger rods and 4 locking casters. Black finish. Optional hangers to be selected from manufacturers' standard hanger offering.

MR611K 6 ft hook style portable folding rack with 40 triple prong hooks for a capacity of 120 coats. 4" locking casters. Black finish.

MR801H 8 ft. hanger style portable folding rack with capacity for 100 theft deterrent or open hook hangers. Charcoal Gray finish. 4" locking casters. Optional hangers to be selected from manufacturers' standard-hanger offering.

MR801K 8 ft hook style portable folding rack with 48 triple prong hooks for a capacity of 144 coats. Charcoal Gray finish. 4" locking casters.



In addition to our Wardrobe Products line, Magnuson Group also offers a complete line of Commercial Recycling & Waste Containers, Visual Communications and Merchandising Displays, Showcase Units, Magazine Racks,

Lecterns and Moveable Screens, Occasional, Computer and Auxiliary Tables, Umbrella Stands, Ashtrays and Desk Accessories. See our website or contact us directly for more information.



Magnuson Group

1400 INTERNATIONALE PKWY • WOODRIDGE, IL 60517-4942 • (Tel) 1-800/342-5725 (Fax) 1-888/329-4729

www.magnusongroup.com