

Johnsonite®


VENETO | TOSCANO | ETRUSCO

LINOLEUM



Linoleum xf™
THE TARKETT COLLECTION





“Ninety percent of business decision-makers say improvements in design can increase productivity.”

*ASID research study:
The Impact of Interior Design on the Bottom Line*

Studies show that high-quality design that integrates all interior elements can increase productivity by as much as 20 percent. The right flooring can make people more comfortable, control noise, reduce slips/falls, lower maintenance costs and downtime, and minimize change-rate costs. And it can motivate and inspire through color, pattern, texture and design.

INTRODUCING THE WORLD’S MOST INTEGRATED, HIGH-PERFORMANCE FLOORING SYSTEM.

Now you can design floors that make perfect sense over the whole space, working with one trusted partner. Our system, which includes rubber, linoleum, homogeneous and heterogeneous vinyl, sports flooring, stair treads, finishing borders and transitions, is modeled after all good design paradigms, uniting function and aesthetics to help you create efficiencies that pay off for the end-user in real lifetime return. Every element is designed to work together functionally, aesthetically and logistically.

THE SYSTEM MAKES YOUR LIFE EASIER.

The Johnsonite system simplifies the design process by allowing you to deal with a single knowledgeable source – a Johnsonite consultant – to help you create high-performance spaces that work hard for end-users.



Creating high-performance environments.

Take a new look at linoleum.

A NATURALLY SUSTAINING SOLUTION.

Johnsonite linoleum is handcrafted and made from rapidly renewable natural materials. It's beauty you can feel good about. We use wood and cork flour, limestone and linseed oil. Nothing unpronounceable. Or harmful to the environment. It's a traditional sustainable solution, aesthetically, environmentally and economically.

A SYSTEM THAT LETS YOU COORDINATE AESTHETICS.

Now you can coordinate every element across product lines, whether you're using different materials, textures and designs. Plus, linoleum is available in custom colors.

COLOR FOUNDATIONS.

Now you'll never again have to worry about coordinating neutrals across product lines, patterns or textures. We guarantee you'll always have neutrals that coordinate over our whole system of rubber, vinyl, linoleum, stairwell systems, finishing borders and accessories. And with six neutral palettes – Warm Grey, Cool Grey, Warm Beige, Cool Beige, Black and White – you can design any space with confidence.

HOW LINOLEUM xf™ CAN HELP YOU CREATE HIGH-PERFORMANCE ENVIRONMENTS.

Extreme finish construction (xf).

- naturally durable surface with long service life
- homogeneous construction
- maintains appearance over time
- extended life means fewer replacements
- less disruption to people using the space

Long life cycle, lower costs.

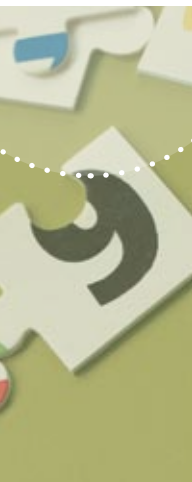
- no initial surface treatment needed
- less susceptible to abrasion, stains and chemicals
- easy to clean
- saves 30% on maintenance costs
- saves 50% on water, detergent and energy
- easy installation with less waste

Low environmental impact.

- made with rapidly renewable natural resources
- longer life means fewer resources to reproduce, transport and install
- ISO 14001 Environmental Management System
- FloorScore certified

Elements for a motivating space .

- four dynamic color palettes
- coordinating wall base, transitions and other finishing accessories
- custom color capabilities
- underfoot comfort contributes to a more productive workforce
- naturally quieter, more resilient and fire retardant
- Veneto Acoustic absorbs more noise and cushions the impact on joints and backs
- non-fading pigments with UV resistance
- naturally bacteriostatic surface



Linoleum xf™.

The story of more and less. And more.

MORE SURFACE PROTECTION.
LESS MAINTENANCE COSTS.
MORE RETURN ON INVESTMENT.

Linoleum xf is exactly what linoleum needed. A tough surface to protect and enhance a beautifully natural and renewable product. Which is exactly what our exclusive xf surface treatment does.

xf changes the whole linoleum equation, starting with maintenance.

Thanks to our xf technology, the end-user saves 30 percent on maintenance costs.

That's because xf requires much less wax and polish, and cleaning and stain removal are faster and easier. In addition, end-users reduce their use of water, detergent and energy by 50 percent. All of which gives Linoleum xf an extremely low life-cycle cost.

The greatest percentage of cost over the life of a floor is not the initial investment and installation – it's the cleaning and maintenance. Because Linoleum xf is so much easier to maintain, xf finish pays for itself within one year. That's real ROI.

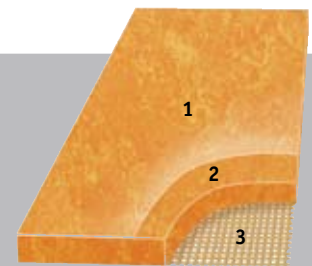
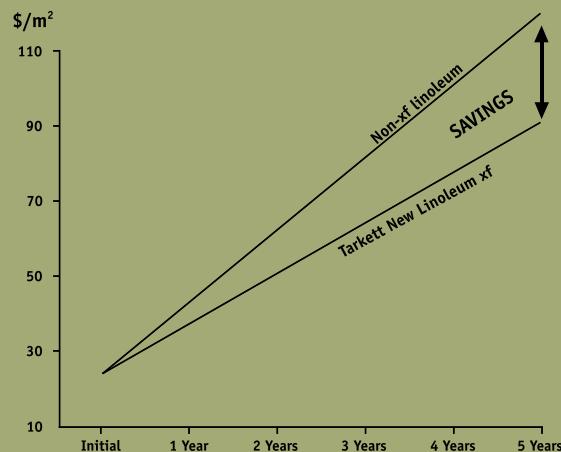
Linoleum xf is the intersection of beauty and toughness. No other linoleum is so resistant to stain, abrasion and chemicals.

THE PROOF.

Linoleum xf has been tested extensively at the WFK Institute in Germany, a leading international cleaning technology research center. Tests focused on our Linoleum xf versus ordinary linoleum. Results show that Linoleum xf significantly outperforms ordinary linoleum in brightness and color retention, in alkali resistance and in stain resistance to a series of substances, including acetone, coffee and betadine.

The cost of the initial investment and installation normally represents just a small part of a flooring's total life-cycle cost. The rest is cleaning and maintenance. And that is why the reduced frequency and extent of cleaning and maintenance create a very favorable life-cycle cost for Johnsonite's Linoleum xf. Compared with untreated linoleum flooring, payback on the initial investment comes within one year.

life-cycle cost for Linoleum xf

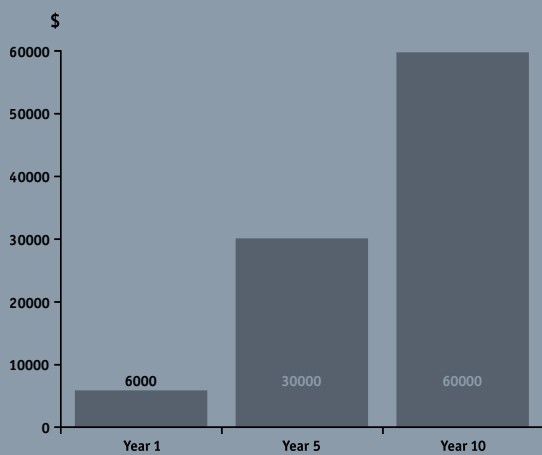


New Linoleum xf construction

1. Urethane polymer based surface treatment with particle reinforcement
2. Solid linoleum
3. Jute backing

Linoleum xf. Exactly what linoleum needed.

cleaning costs – savings for over 10,000 sq ft



Cleaning and maintenance costs are reduced by 30%. Example: For an area of approximately 10,000 sq ft over a period of 10 years, the savings will reach \$60,000.

Natural

THE ELEVATION OF WELL-BEING TO AN ART FORM.



Veneto | 617 Quartz WB
Roll 2.0 mm, 2.5 mm
Weldrod 1750617



Etrusco | 036 Amber
Roll 2.5 mm
Weldrod 1750036



Veneto | 619 Carnelian
Roll 2.0 mm, 2.5 mm
Weldrod 1750619



Veneto | 623 Peridot WB
Roll 2.0 mm, 2.5 mm
Weldrod 1750119



Veneto | 620 Opal WB
Roll 2.0 mm, 2.5 mm
Weldrod 1750119




Veneto | 611 Moonstone WB
Roll 2.0 mm, 2.5 mm, 3.2 mm
Weldrod 1750617




Veneto | 631 Citrine WB
Roll 2.0 mm, 2.5 mm, 3.2 mm
Tile | Weldrod 1750631

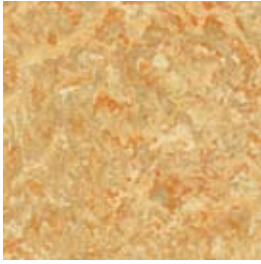


Veneto | 616 Feldspar WB 
Roll 2.0 mm, 2.5 mm, 3.2 mm
Tile | Weldrod 1750313

Veneto 2.0 mm, 3.2 mm, Acoustic and tiles are standard non-stocking items available in full rolls and cartons. Call for availability.

We've identified Color Foundations neutrals in the following way: **WB** (warm beige), **CB** (cool beige), **WG** (warm grey), **CG** (cool grey), **B** (black), **W** (white). All colors are available in tiles. Contact us for details.

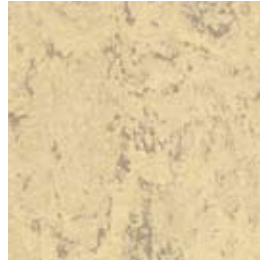
 Denotes optional Acoustic construction with Elafono to reduce sound transmission. Available in rolls only.



Veneto | 630 Malachite WB
Roll 2.0 mm, 2.5 mm
 Weldrod 1750018



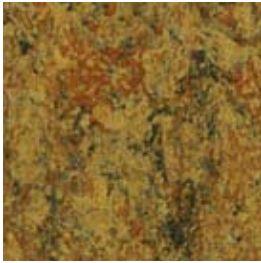
Veneto | 605 Beryl WB
Roll 2.0 mm, 2.5 mm
 Weldrod 1750622



Veneto | 624 Azurite WB
Roll 2.0 mm, 2.5 mm
 Weldrod 1750611



Veneto | 622 Geode WB
Roll 2.0 mm, 2.5 mm
 Weldrod 1750119




Toscano | 522 Jasper
Roll 2.5 mm
 Weldrod 1750522



Toscano | 502 Fossil WB
Roll 2.5 mm
 Weldrod 1750502



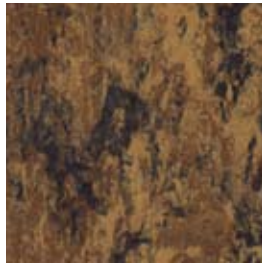
Veneto | 600 Limestone WB 
Roll 2.0 mm, 2.5 mm | **Tile**
 Weldrod 1750622



Veneto | 632 Garnet
Roll 2.0 mm, 2.5 mm
 Weldrod 1750632



Toscano | 504 Hematite WB
Roll 2.5 mm
 Weldrod 1750504



Toscano | 524 Tiger Eye
Roll 2.5 mm
 Weldrod 1750524



COLOR FOUNDATIONS™

Now you'll never again have to worry about coordinating neutrals across product lines, patterns or textures. We guarantee you'll always have neutrals that coordinate over our whole system of rubber, vinyl, linoleum, stairwell systems, finishing borders and accessories. And with six neutral palettes – Warm Grey, Cool Grey, Warm Beige, Cool Beige, Black and White – you can design any space with confidence.



Contemporary

UNEXPECTED SENSATIONS THAT ADD EXCITEMENT TO EVERYDAY LIFE.



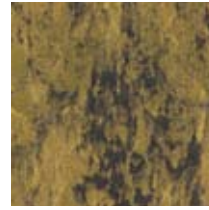
Toscana
535 Hot Spring
Roll 2.5 mm
Weldrod 1750535



Etrusco
095 Turtle Bay
Roll 2.5 mm
Weldrod 1750095



Veneto
658 Lily Pad
Roll 2.0 mm, 2.5 mm
Weldrod 1750658



Toscana
559 Fish Pond
Roll 2.5 mm
Weldrod 1750559



Veneto
695 Marsh
Roll 2.0 mm, 2.5 mm
Weldrod 1750695



Veneto
603 Sand Dollar **WG**
Roll 2.0 mm, 2.5 mm | **Tile**
Weldrod 1750603



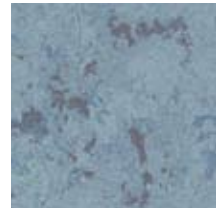
Veneto
657 Seagull
Roll 2.0 mm, 2.5 mm
Weldrod 1750657



Veneto
659 Parrot Fish
Roll 2.0 mm, 2.5 mm
Weldrod 1750457



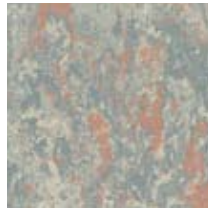
Veneto
652 Kayak
Roll 2.0 mm, 2.5 mm | **Tile**
Weldrod 1750652



Veneto
666 Raindrop
Roll 2.0 mm, 2.5 mm, 3.2 mm
Tile | Weldrod 1750664



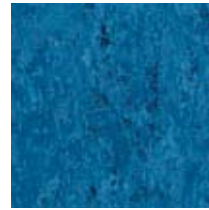
Veneto
663 Lighthouse **(A)**
Roll 2.0 mm, 2.5 mm
Weldrod 1750660



Veneto
660 Riverfront **(A)**
Roll 2.0 mm, 2.5 mm
Weldrod 1750467



Etrusco
068 Wave
Roll 2.5 mm
Weldrod 1750068



Veneto
669 Rapids
Roll 2.0 mm, 2.5 mm
Weldrod 1750669



Veneto
664 Tidal
Roll 2.0 mm, 2.5 mm
Weldrod 1750664



Veneto
681 Lakefront
Roll 2.0 mm, 2.5 mm | **Tile**
Weldrod 1750681



Veneto
661 Waterfall
Roll 2.0 mm, 2.5 mm
Weldrod 1750661



Veneto
665 Peninsula
Roll 2.0 mm, 2.5 mm, 3.2 mm
Weldrod 1750661

We've identified Color Foundations™ neutrals in the following way: **WB** (warm beige), **CB** (cool beige), **WG** (warm grey), **CG** (cool grey), **B** (black), **W** (white). All colors are available in tiles. Contact us for details.

(A) Denotes optional Acoustic construction with Elafono to reduce sound transmission. Available in rolls only.



ELEGANTLY COMBINING THE RAW AND THE SOPHISTICATED.

Urban



Etrusco
002 Crescent Moon WG
Roll 2.5 mm
 Weldrod 1750002



Veneto
675 Horizon WG
Roll 2.5 mm
 Weldrod 1750672



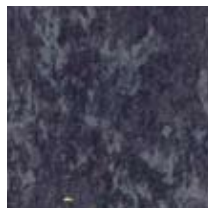
Veneto
672 Twilight WG
Roll 2.0 mm, 2.5 mm
 Weldrod 1750672



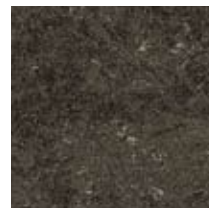
Veneto
602 Luminary WG
Roll 2.0 mm, 2.5 mm | Tile
 Weldrod 1750306



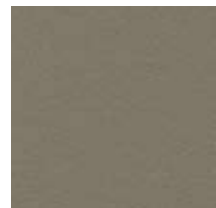
Veneto
673 Comet WG
Roll 2.0 mm, 2.5 mm
 Weldrod 1750673



Veneto
646 Dragonfly
Roll 2.5 mm
 Weldrod 1750646



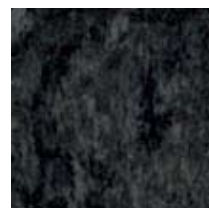
Veneto
609 Supernova B
Roll 2.5 mm
 Weldrod 1750609



Etrusco
004 Lunar WG
Roll 2.5 mm
 Weldrod 1750306



Veneto
608 Northern Lights
Roll 2.0 mm, 2.5 mm | Tile
 Weldrod 1750504



Veneto
674 Falling Star B
Roll 2.0 mm, 2.5 mm | Tile
 Weldrod 1750674



Etrusco
098 Nighttime B
Roll 2.5 mm
 Weldrod 1750674

Veneto 2.0 mm, 3.2 mm, Acoustic and tiles are standard non-stocking items available in full rolls and cartons. Call for availability.

Cosmopolitan

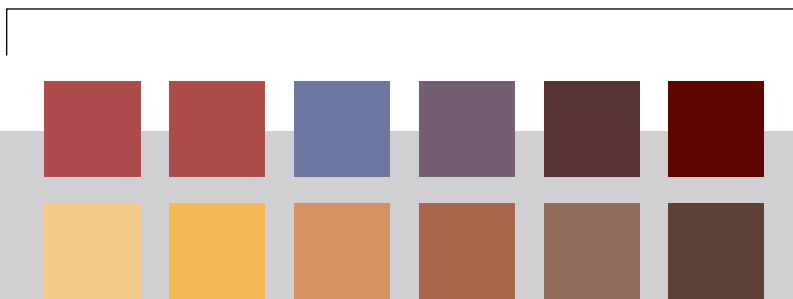
RICH EXPRESSIONS BUILT ON BEAUTIFULLY CELEBRATED TONES.



Veneto | 641 Towpath Trail
Roll 2.0 mm, 2.5 mm | **Tile**
 Weldrod 1750641




Veneto | 648 Earth
Roll 2.0 mm, 2.5 mm
 Weldrod 1750648



COORDINATING JOHNSONITE COLORS

Johnsonite has a full palette of coordinating colors to help you select rubber flooring, stair treads, finishing borders and accessories and then coordinate them with Linoleum xf™. Our Color Guide can provide you with exact color representations so you can choose colors without having to request additional samples. There are more than 140 standard solid colors to choose from. And if you don't see your color, we can create it — and virtually any other color — with our industry-leading custom color capabilities.

We've identified Color Foundations™ neutrals in the following way: **WB** (warm beige), **CB** (cool beige), **WG** (warm grey), **CG** (cool grey), **B** (black), **W** (white). All colors are available in tiles. Contact us for details.

 Denotes optional Acoustic construction with Elafono to reduce sound transmission. Available in rolls only.




Veneto | 615 Honeysuckle
Roll 2.0 mm, 2.5 mm
Weldrod 1750615



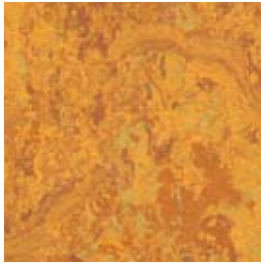
Veneto | 634 Daisy
Roll 2.0 mm, 2.5 mm | Tile
Weldrod 1750634



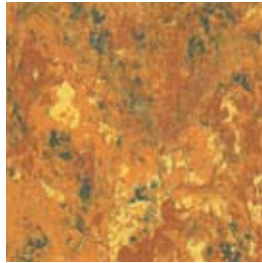
Veneto | 612 Dandelion 
Roll 2.0 mm, 2.5 mm, 3.2 mm
Tile | Weldrod 1750612



Veneto | 614 Cricket
Roll 2.5 mm
Weldrod 1750614



Veneto | 636 Daylily
Roll 2.0 mm, 2.5 mm
Weldrod 1750636



Toscano | 534 Oak Tree WB
Roll 2.5 mm
Weldrod 1750534



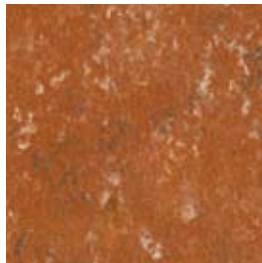
Veneto | 628 Sunflower
Roll 2.0 mm, 2.5 mm
Weldrod 1750628



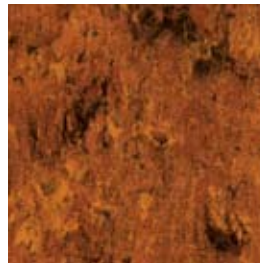
Etrusco | 034 Woodpecker
Roll 2.5 mm
Weldrod 1750034



Veneto | 642 Azalea
Roll 2.0 mm, 2.5 mm
Weldrod 1750642



Veneto | 639 Sequoia
Roll 2.0 mm, 2.5 mm
Weldrod 1750339



Toscano | 539 Hazelnut
Roll 2.5 mm
Weldrod 1750339



Etrusco | 041 Cardinal
Roll 2.5 mm
Weldrod 1750041



Veneto | 645 Ladybug
Roll 2.0 mm, 2.5 mm
Weldrod 1750645



Veneto | 626 Wild Berries
Roll 2.0 mm, 2.5 mm
Weldrod 1750626



Veneto | 649 Thistle
Roll 2.0 mm, 2.5 mm
Weldrod 1750649



Etrusco | 040 Orchid
Roll 2.5 mm
Weldrod 1750040



Veneto 2.0 mm, 3.2 mm, Acoustic and tiles are standard non-stocking items available in full rolls and cartons. Call for availability.



Linoleum xf™ | The Tarkett Collection

DESCRIPTION EN 548: Linoleum homogeneous floorcovering on jute backing for rolls (except for acoustic on Elafono backing) and synthetic backing for tiles.
Composition: Wood and cork flour, linseed oil, limestone, natural resins, pigments.

Technical Data	Standards	Veneto			Veneto Acoustic	Veneto Tiles	Toscano	Etrusco
Total Thickness	EN 428	.080" (2.0 mm)	.100" (2.5 mm)	.125" (3.2 mm)	.160" (4.0 mm)	.100" (2.5 mm)	.100" (2.5 mm)	.100" (2.5 mm)
Homogeneity of Linoleum Layer	EN 12466	Homogeneous Floorcovering						
Classification	ASTM F 2034 (Sheet) ASTM 2195 (Tile)	Type 1	Type 1	Type 1	Type 3	Type 1	Type 1	Type 1
Total Weight/sq.yd./m ²	EN 430	4.5 lbs/2.40 kg	5.5 lbs/3 kg	7.2 lbs/3.90 kg	7.2 lbs/3.90 kg	5.8 lbs/3.150 kg	5.5 lbs/3 kg	5.5 lbs/3 kg
Residual Indentation	ASTM F 970 (Modified for weight only)	650 lbs	650 lbs			650 lbs	650 lbs	650 lbs
Caster Chair	EN 425	Suitable for office chairs with casters type W (Norm EN 12529)						
Flexibility	EN 435 Method A	≤ 25 mm Ø	≤ 30 mm Ø	≤ 40 mm Ø	≤ 30 mm Ø	≤ 30 mm Ø	≤ 30 mm Ø	≤ 30 mm Ø
Flammability	ASTM E 648	Class 1				Class 1	Class 1	Class 1
Smoke Density	ASTM E 622	≤ 450				≤ 450	≤ 450	≤ 450
Cigarette Burns	EN 1399	Resistant to cigarette burns. Stubborn stains will be gently rubbed away with steel wool and soap, and a few drops of a standard polish applied afterwards.						
Static Electrical Propensity	EN 1815	< 2 kV	< 2 kV	< 2 kV	< 2 kV	< 2 kV	< 2 kV	< 2 kV
Impact Sound Reduction	EN ISO 140-8 EN ISO 717/2 ΔL _w	5 dB	6 dB	9 dB	14 dB	6 dB	6 dB	6 dB
Impact Sound Reduction with Elafono		14 dB	15 dB	15 dB			15 dB	15 dB
Light Fastness	EN ISO 105-B02 Method 3	≥ 6	≥ 6	≥ 6	≥ 6	≥ 6	≥ 6	≥ 6
Chemical Resistance	EN 423	Resistant to dilute acids, oils, fats, current solvents and alkalis.						
Thermal Resistance	DIN 52612 BS 874	0.012 m ² K/W	0.015 m ² K/W	0.019 m ² K/W	0.040 m ² K/W	0.015 m ² K/W	0.015 m ² K/W	0.015 m ² K/W
Colors		43	49	6	6	13	8	9
Roll Length Roll Width Tile Size		20-30 lm/65-100 linear feet nominal 6' 6" nominal (2 m)				50 x 50 cm 19.68" X 19.68" nominal 20 tiles per ctn 53.8 sq ft (5 m ² per ctn) 35 lbs per ctn (15.75 kg)	20-30 lm/65-100 linear feet nominal 6' 6" nominal (2 m)	
Quantity								
Weight								

Please visit johnsonite.com for the most updated installation, cleaning and maintenance instructions.

The weldrods listed are intended to correspond with the denoted Linoleum colors. Other welding rods can be used for a variety of visual effects.

How to Order:

Veneto

Rolls
 2.0 mm: VEN-R-(XXX) Color Number - 2.0
 2.5 mm: VEN-R-(XXX) Color Number - 2.5
 3.2 mm: VEN-R-(XXX) Color Number - 3.2
 Acoustic: VENAC-R-(XXX) Color Number - 2.0
 Tiles
 2.5 mm: VEN-T-(XXX) Color Number

Etrusco

Roll: ETR-R-(XXX)-Color Number

Toscano

Roll: TSC-R-(XXX)-Color Number

The Johnsonite system includes several accessories, including transitions, finishing borders, wall base, cove fillers and caps to complete your flooring design and installation. The Johnsonite system simplifies the design process by allowing you to deal with a single knowledgeable source - a Johnsonite consultant - to help you create high-performance spaces that work hard for end-users.

Johnsonite
A Tarkett Company
 16910 Munn Road
 Chagrin Falls, OH 44023
 800-899-8916 or 440-543-8916

www.johnsonite.com

Johnsonite®