

Johnsonite
Flooring Solutions to Integrate Design & Life-Safety

USA: (800) 899-8916 Fax (440) 543-8920
Canada: (800) 661-2162 Fax (519) 747-9155
www.johnsonite.com
e-mail: info@johnsonite.com

REMOVABLE (RECYCLABLE) RESILIENT WALL BASE

The replaceable or recyclable resilient wall base furnished under this specification shall be the **JOHNSONITE rePLACE WALL BASE SYSTEM**. It shall be constructed of first quality raw materials and free from any imperfections which would detract from its appearance. The Johnsonite rePLACE Wall Base System shall be specified by style _____ [specify toe type wall base profile; **RB-A** with an overall height of 4-3/8" (11.11cm) and with a thickness of .080" (2.03mm); **RB-F** with an overall height of 4-3/8" (11.11cm) and a thickness of .080" (2.03mm); or **RB-G** with an overall height of 4-1/2" (11.43cm) and a thickness of 13/64" (5.16mm), at its thickest point]; and a length of 4' (1.22m), and with integral locking tabs on the back of the profile which interlock onto wall track **RBT-00**. The rePLACE Wall Track RBT-00 shall be mechanically fastened to the wall using screws appropriate for the type of substrate material. The rePLACE Wall Base color shall be _____ (specify by color number and name). The rePLACE Corner Stops and End Stops specify by style _____ [**RBOC** outside corner stop with an overall height of 4-5/8" (11.75cm) and thickness of 9/16" (14.28mm); **RBIC** inside corner stop with an overall height of 4-5/8" (11.75cm) and thickness of 5/8" (15.88mm); **RBRS** right end stop with an overall height of 4-5/8" (11.75cm) and a thickness of 1/8" (3.18mm); or **RBLS** left end stop with an overall height of 4-5/8" (11.75cm) and a thickness of 1/8" (3.18mm)]. The rePLACE Wall Base Preformed Corners, Corner Stops and End Stops color shall be _____ (specify by color number and name). The wall base shall conform in all respects to United States Patent #6,122,872 and other patents pending and meet the dimensional and performance requirements of ASTM F-1861, Type TP, Group I (solid) Standard Specification for Resilient Wall Base.

Go to johnsonite.com for current product specifications.

rePLACE Demountable Wall Base System® has won numerous awards for innovation and design excellence.



©2006 Johnsonite Inc. Printed in the USA 95100-565 01/06 joh1366-5



rePLACE®

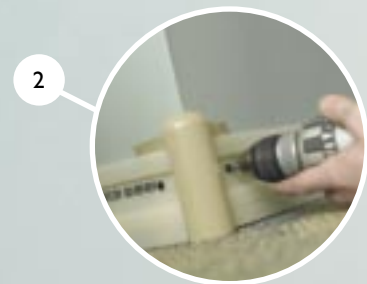
THE WORLD'S FIRST
DEMOUNTABLE
WALL BASE SYSTEM.

IT'S ABOUT TIME.

Johnsonite®



1
INSTALL TRACK.
(No adhesive required)



2
ATTACH CORNERS.



3
SLIDE ON rePLACE.



rePLACE

CHANGE ROOMS FASTER.
REPAIR HIGH-ABUSE AREAS QUICKLY.
REDUCE DOWNTIME.
PROTECT THE ENVIRONMENT.
INCREASE RETURN ON INVESTMENT.

We punch clocks.

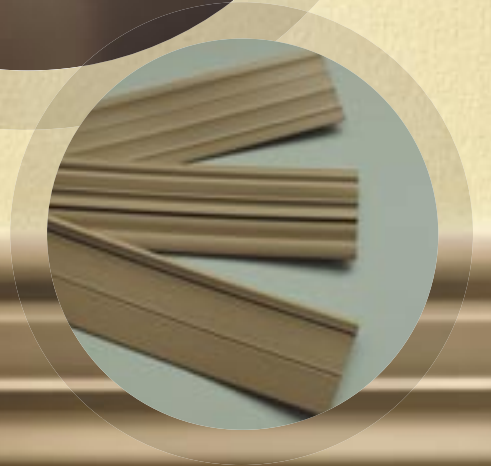
We bill hours. We track productivity.

Time is what the world runs on. And time is what rePLACE is designed to save. Take a simple thing like repairing a section of damaged base in a high-abuse area. In theory, it should be easy. But in the real world, you remove the damaged base, and you take some of the wall with it. Now you have to patch the wall. Then prime it. Then repaint it. And finally, two days later, you install the new section of base. If time is money, you do the math. 🕒 Now what if a section of rePLACE gets damaged? Because it hangs on a track with no adhesive, you just slide it off and slide on a new one. It literally takes minutes. It's about as complicated as changing a lightbulb.

CHANGE HAPPENS. FASTER.

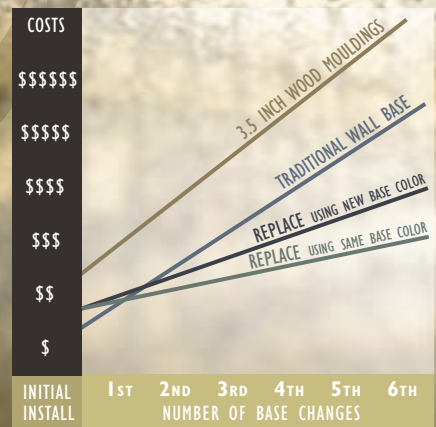


rePLACE LETS
YOU CHANGE OUT
SPACE FASTER WITH
LESS MESS AND LESS
DOWNTIME.




To keep pace with the world today, organizations have to be more productive and flexible than ever. They have to adapt quickly. And so do their interior spaces. rePLACE makes it easier to change out space. It's a logical step in a long line of innovations that have changed the way organizations think about space and work: wireless networks, modular furniture, demountable walls.

rePLACE is a cost-effective solution for organizations that change out their space frequently. In fact, rePLACE can pay for itself after just one change-out. There's almost no downtime when space is reconfigured or repaired. No patching, priming, sanding or repainting. No airborne dust or debris and no adhesive odor to interrupt the people who use the space. There's less downtime, which means more productivity. ⌚



LIFE-CYCLE COST ILLUSTRATION
Compare change-outs using 3.5" wood mouldings (painted), traditional wall base (installed with adhesive), vs. change-outs with rePLACE using the original base or a new profile.



*rePLACE is
the perfect solution
for high-traffic,
high-abuse areas.*

THE CHALLENGE

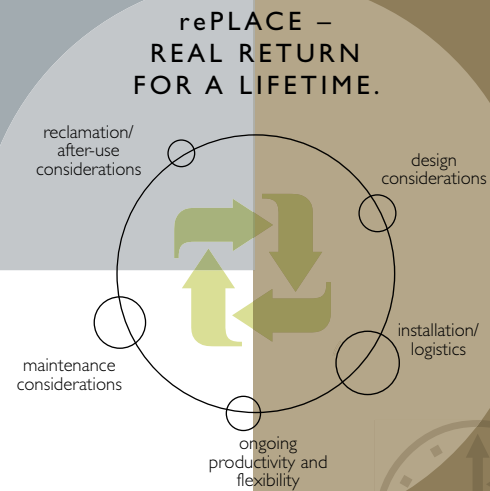
STUYVESANT TOWN, NEW YORK CITY

The common areas of Stuyvesant Town hadn't been remodeled in many years. It was time to upgrade. The owners wanted to give the space a more upscale feel, but they recognized that the hallways were high-traffic, high-abuse areas. They wanted to use carpet, instead of resilient, but they knew they would have to change it out more frequently and that tearing out base and repairing the walls each time would be costly.

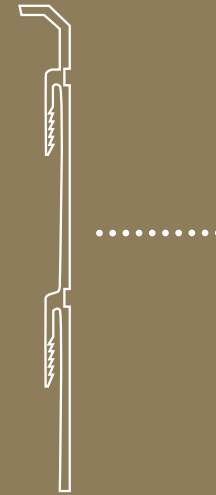
rePLACE turned out to be the perfect solution, allowing their maintenance staff to easily make repairs to the walls or the floor without having to tear out the base. And without having to repair and repaint the walls. There's much less disruption to their tenants, and the staff is freed up to focus on maintaining the units, which makes the tenants happier.

Stuyvesant Town is a residential apartment complex set within a private 80-acre park, located in the heart of Manhattan.

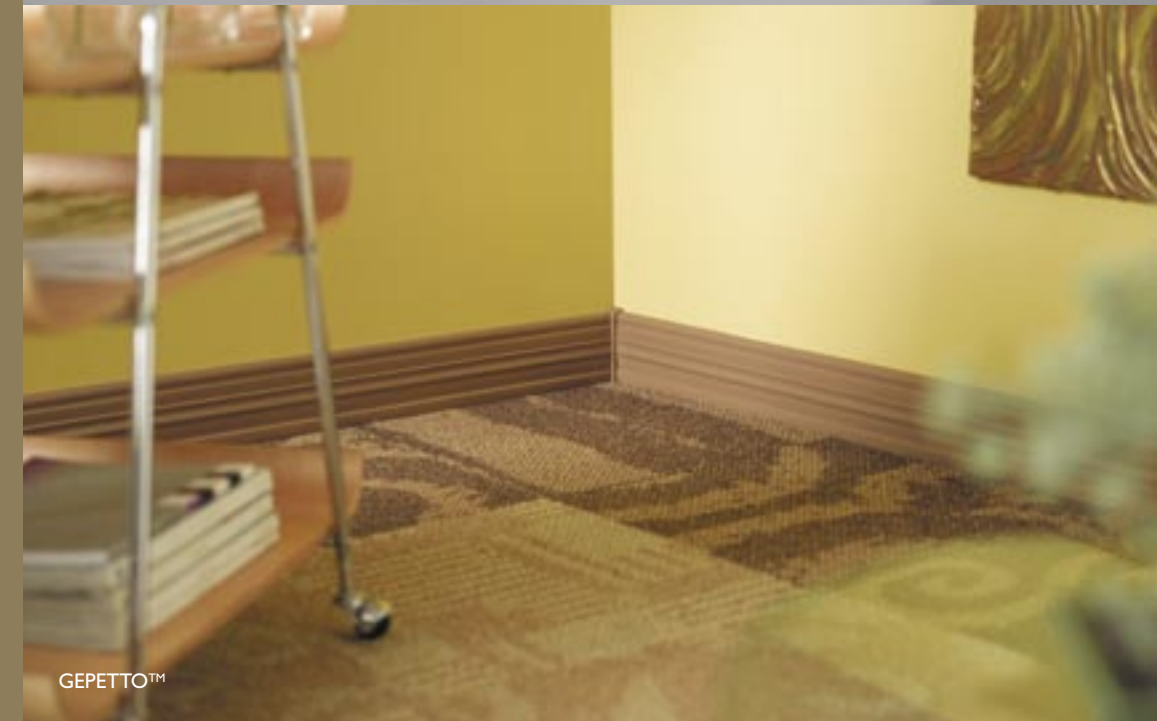
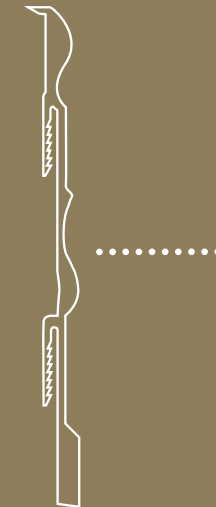
rePLACE MAY NOT
HAVE A SOUL,
BUT IT DOES HAVE
AN AFTERLIFE.



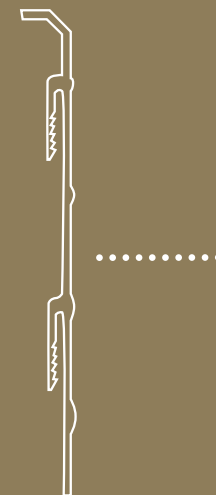
Because rePLACE doesn't use adhesives, it's easy to recycle. In fact, rePLACE is an innovation that prompted another new idea: Johnsonite's material reclamation program. We call it RESTART.™ Just send us the base or track when you're done with it, and we'll reprocess it into new product. (For more information about RESTART, see the last page of this brochure or go to johnsonite.com.) But the fact that rePLACE is recyclable is only part of its sustainability story. The real bonus is that it's reusable. When you change out a space that contains rePLACE, you reuse the same base. Which means you won't have to order new product. And we won't have to use the resources to manufacture more base and then transport it to you. Everyone wins, including the environment.



TEMPO™



GEPETTO™



PROMINENT™



APPLICATIONS

- Space with high change rates
- Space where interior finishes are often changed
- Organizations concerned with downtime
- Organizations concerned with sustainability
- High-traffic/high-abuse areas

APPLICATION BENEFITS

- Ideal for tenant improvement projects with tight budgets and timetables
- Floors or walls can be changed without replacing the wall base
- Track may be installed before carpet or hard surface materials; base can then be snapped on after flooring materials are completed or after all trades are completed

COST BENEFITS

- Removability allows for reuse of product, eliminating replacement cost during multiple remodels
- Elimination of adhesives reduces cleanup costs
- Full payback, often after one reuse, due to elimination of replacement materials and installation
- Damaged sections can be easily and cost effectively replaced
- No special tools needed for typical applications

DESIGN BENEFITS

- Quickly refresh any space by changing wall base colors or designs, with or without changing flooring or walls
- Paint walls without masking wall base; simply lift off rePLACE, then re-install
- Complements any design motif
- Works with most types of flooring applications
- Design engineered to eliminate kick-in
- Masks wall imperfections
- Available in 30 ColorMatch® colors (standard); all other colors available by special order

RESTART- MATERIAL RECLAMATION PROGRAM

rePLACE is hung on a track, so it can be easily reused, replaced or recycled. By reducing landfill waste and fossil fuels required to manufacture and transport more product, rePLACE minimizes the environmental impact while maximizing your return on investment.

All rePLACE wall base that is not intended to be reused in the facility or another facility will be recycled in the best possible manner. A reclamation plan will be submitted, which will provide directions for the reclamation of all rePLACE at the job site.

RESTART Services:

- Collection:**
1. rePLACE must be removed from the existing installation and prepared for shipment.
 2. Snap off rePLACE base.
 3. Unscrew rePLACE track.

Shipping Preparation:

1. rePLACE must be palletized and secured for shipping (i.e., shrink wrap, banding, strapping).
2. rePLACE must be kept dry.
3. rePLACE must be clean of any construction debris.

Processing:

1. All rePLACE wall base and track must be approved prior to shipment.
2. Contact the Johnsonite RESTART Return Coordinator at 800.899.8916 and submit in writing details of goods to be returned (e.g., weight, color, etc.).
3. Request a Return Goods Authorization Number.

Return of Goods:

1. Upon receipt of an approved Return Goods Authorization Number (RGA#), the customer will arrange for the return of the goods.
2. The customer must arrange for the carrier of their choice to transport the goods to the Johnsonite facility designated on the RGA form.
3. The shipment must be prepaid by the customer.
4. A copy of the RGA must accompany all returns.

Certification:

Upon request, a certificate will be furnished verifying the return and reclamation of the rePLACE materials and the number of pounds diverted from a landfill.

Information:

For further information on the Johnsonite RESTART material reclamation program, please call 800.899.8916.

WWW.JOHNSONITE.COM



ColorMatch is a designer palette of 30 leading colors that match Johnsonite's Rubber and Vinyl Specialty Flooring Products and Finishing Accessories.

COLOR PALETTE



For accurate color representation, please refer to the Johnsonite Color Selector, Color Guide or Johnsonite Story.

rePLACE WALL BASE AND TRACK				
Profile	Product Code	Height	Length Per Piece	Linear Feet Per Carton
Prominent™	RB-XX-A	4-3/8" (11.11cm)	4' (1.2m)	80' (24.4m)
Tempo™	RB-XX-F	4-3/8" (11.11cm)	4' (1.2m)	80' (24.4m)
Gepetto™	RB-XX-G	4-1/2" (11.43cm)	4' (1.2m)	80' (24.4m)
rePLACE Track	RBT-00	for use with all profiles	4' (1.2m)	80' (24.4m)
rePLACE CORNERS AND END STOPS (for use with all profiles)				
Profile	Product Code	Height	Pieces Per Carton	
Inside Corner	RBIC-XX	4-5/8" (11.75cm)	25	
Outside Corner	RBOC-XX	4-5/8" (11.75cm)	25	
Right End Stop	RBRs-XX	4-5/8" (11.75cm)	25	
Left End Stop	RBLs-XX	4-5/8" (11.75cm)	25	
SPECIAL NOTES	• RBIC, RBOC, RBRs, RBLs are universal Corners and End Stops for use with all profiles. Profiles other than standards available by special request. Consult factory for details.			
HOW TO ORDER	1. Select Product Code – i.e., RB-XX-F – [RB-XX-F] 2. Select Color Code – i.e., 42 – [RB-42-F] – Select from color palette A 3. Select rePLACE track – RBT-00 4. Select Inside and Outside Corners, Right and Left End Stops to complement installation.			

Johnsonite can help create high-performance environments by enhancing resource and human productivity.