



Johnsonite®

HIGH-PERFORMANCE RESILIENT TILES AND PLANKS

LUXURY VINYL TILES

I.D. Moduline®
THE TARKETT COLLECTION

“Ninety percent of business decision-makers say improvements in design can increase productivity.”

*ASID research study:
The Impact of Interior Design on the Bottom Line*

Studies show that high-quality design that integrates all interior elements can increase productivity by as much as 20 percent. The right flooring can make people more comfortable, control noise, reduce slips/falls, lower maintenance costs and downtime, and minimize change-rate costs. And it can motivate and inspire through color, pattern, texture and design.

INTRODUCING THE WORLD'S MOST INTEGRATED, HIGH-PERFORMANCE FLOORING SYSTEM.

Now you can design floors that make perfect sense over the whole space, working with one trusted partner. Our system, which includes rubber, linoleum, homogeneous and heterogeneous vinyl, sports flooring, stair treads, finishing borders and transitions, is modeled after all good design paradigms, uniting function and aesthetics to help you create efficiencies that pay off for the end-user in real lifetime return. Every element is designed to work together functionally, aesthetically and logistically.

THE SYSTEM MAKES YOUR LIFE EASIER.

The Johnsonite system simplifies the design process by allowing you to deal with a single knowledgeable source – a Johnsonite consultant – to help you create high-performance spaces that work hard for end-users.



Creating high-performance environments.

How I.D. Moduline® can help you create high-performance environments.

Striking. Unconventional. And multi-dimensional. The design possibilities are endless with the I.D. Moduline collection, combining the rich looks of wood, stone, aluminum and other contemporary materials.

Add depth to your design with unique 3-dimensional effects accentuated with beveled edges. Mix and match minerals and woods, metals and woods, or light and dark woods using a combination of tiles and planks for your own custom design.

Highly durable, I.D. Moduline comes with one of the industry's most attractive life-cycle costs. Its PUR-reinforced wear layer makes it easy to maintain and resistant to chemicals. That reduces its maintenance costs by up to 30 percent and the costs for water, detergents and energy by as much as 50 percent. Enhanced slip resistance, noise reduction and resistance to stains, chemicals and abrasions make I.D. Moduline a smart design choice in every way possible.

Dynamic design that stimulates ROI.

- color, texture and contemporary materials that enhance any environment
- ideal for retail, hospitality, restaurant and commercial environments
- floor design that boosts the overall experience with the space

Tough construction for low maintenance.

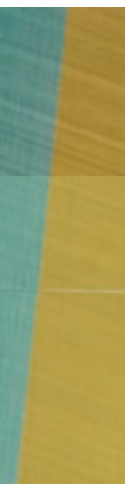
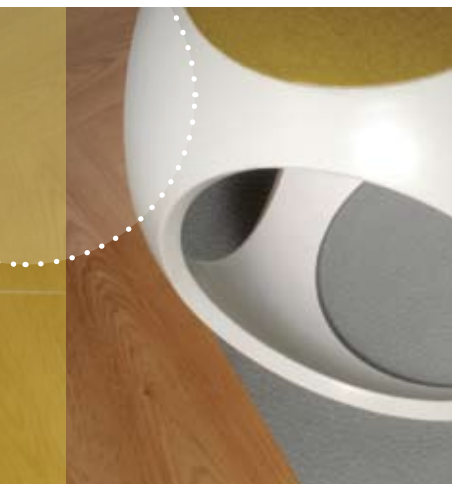
- tear-resistant solid calendered sheet with glass fiber reinforcement
- 0.8 mm pure PVC transparent wear layer is exceptionally hard wearing and indentation resistant
- PUR-reinforced surface makes it easy to clean and resistant to stains and chemicals

Low environmental impact.

- raw materials selected for their limited impact on the environment
- extensive use of recycled materials and easy cleaning characteristics help conserve natural resources and reduce the need for chemicals
- ISO 14001 environmental management system
- FloorScore certified

Elements for a motivating space.

- tiles and planks provide a diverse blend of design and colors to inspire creativity
- woods, stone, metal and other striking elements can combine to create new and unique design concepts
- 2.5 mm thick with beveled edges to create realistic effects



I.D. Moduline® Wood

The rich look of wood without the high costs in materials, labor and maintenance – made all the more attractive with beveled edges.



6001 Maple WB 3.25" Plank



7013 Doussie 6.5" Plank



6002 Birch 3.25" Plank | 7011 Birch 6.5" Plank



7018 Zebrano 6.5" Plank



6003 Light Beech WB 3.25" Plank | 7012 Light Beech WB 6.5" Plank



7015 Oriental Plum 6.5" Plank



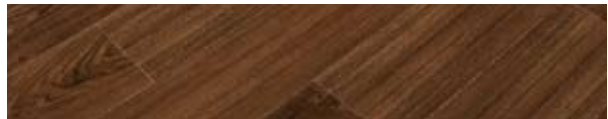
7016 Pecan WB 6.5" Plank



6008 Mahogany 3.25" Plank



7005 Light Oak WB 6.5" Plank



7004 Oiled Teak 6.5" Plank



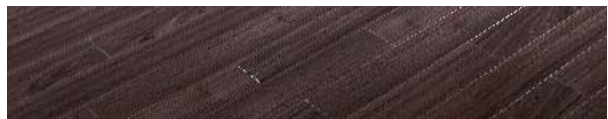
6010 Medium Oak WB 3.25" Plank | 7006 Medium Oak WB 6.5" Plank



9001 Dark Weathered Oak B 6.5" Plank



7002 Golden Beech 6.5" Plank



6006 Indian Laurel 3.25" Plank



7001 Cherry 6.5" Plank



7017 Wenge B 6.5" Plank



7014 Golden Cherry 6.5" Plank



9002 Light Weathered Oak CB 6.5" Plank

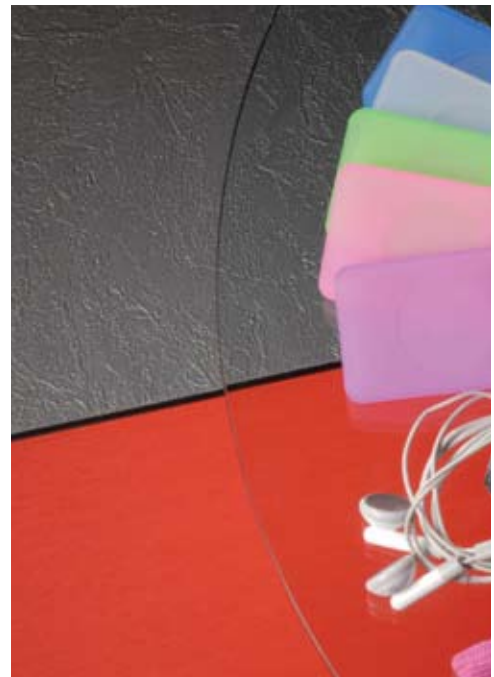


7007 Merbau 6.5" Plank



8001 Concrete Oak CG 6.5" Plank

I.D. Moduline Woods can be coordinated with Johnsonite Wall Art™ patterns in Millwork®, TightLock™ and standard wall base for a complete finished environment. Color, shade and pattern vary for realistic natural appearance.



I.D. Moduline **Metallics**

Designed to inspire modern and dynamic patterns, I.D. Moduline metals selection includes four metallic options for use individually, or with other ID moduline tiles and planks.



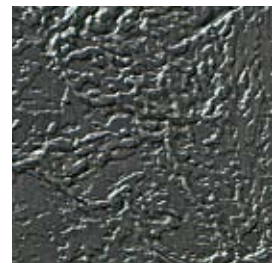
5028 Steel CG Tile



6001 Hammered Silver CG Tile



5001 Aluminum CG Tile



7001 Natural Slate CG Tile

COLOR FOUNDATIONS

Now you'll never again have to worry about coordinating neutrals across product lines, patterns or textures. We guarantee you'll always have neutrals that coordinate over our whole system of rubber, vinyl, linoleum, stairwell systems, finishing borders and accessories. And with six neutral palettes – Warm Grey, Cool Grey, Warm Beige, Cool Beige, Black and White – you can design any space with confidence.



We've identified Color Foundations neutrals in the following way: **WB** (warm beige), **CB** (cool beige), **WG** (warm grey), **CG** (cool grey), **B** (black), **W** (white)

I.D. Moduline® UNI

This collection of vibrant UNI color tiles is a palette for exciting modular design effects, from mixed color patterns or zoning features, to lively, modern designs that use color and other tiles or wood planks in creative combinations.



5002 Acid Green Tile



5003 Impulse Yellow Tile



5004 Vibrant Orange Tile



5005 Dynamic Red Tile



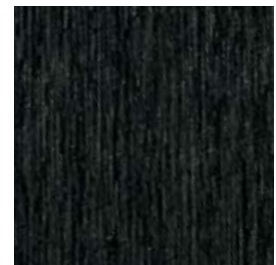
5009 Pink Emotion Tile



5007 Eclectic Blue Tile



5006 Turquoise Boost Tile



5008 Urban Black B Tile



COORDINATING JOHNSONITE COLORS

The Johnsonite system of flooring and accessory items coordinates color as well as design elements. Finishing borders and accessories in more than 140 colors can tie the whole design together.



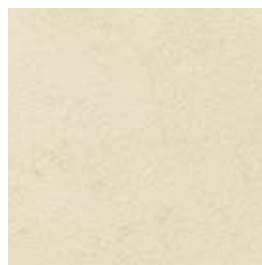
We've identified Color Foundations neutrals in the following way: **WB** (warm beige), **CB** (cool beige), **WG** (warm grey), **CG** (cool grey), **B** (black), **W** (white)

I.D. Moduline Cements

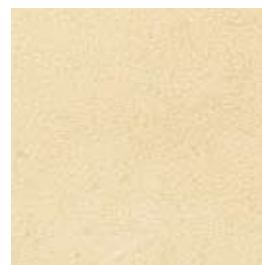
Designed to inspire modern and dynamic patterns, this I.D. Moduline concrete and stone selection includes light stone shades, and slate options for use individually or in combination, or to complement wood plank effects.



5024 Concrete WG Tile



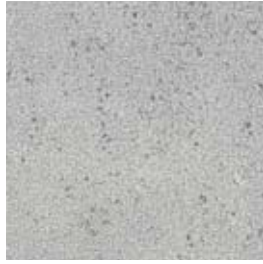
5025 Ecrú Stone CB Tile



5026 Sand Stone WB Tile



5027 Beige Stone WB Tile



5023 Light Concrete CG Tile





I.D. Moduline® | The Tarkett Collection

DESCRIPTION

Luxury vinyl floor covering with PUR-reinforced surface. In tile and plank form.

Technical Data	Standards	I.D. Moduline
Type of Product		Luxury Vinyl Tiles and Planks
Classification	ASTM F-1700	Class III Type B
Total Thickness	EN 428	.100" nominal (2.5 mm)
Wear Layer Thickness	EN 429	.032" nominal (0.80 mm)
Total Weight /sq yd/m ²	EN 430	7.02 lbs (3.81 kg)
Abrasion Group	EN 660-1	Group T – Transparent
Residual Indentation	ASTM F-970	250 psi
Wear by Furniture Legs	EN 424	No Damage
Dimensional Stability	EN 434	≤ 0.10%
Curl Resistance	EN 434	≤ 2 mm
Critical Radiant Flux	ASTM E-648	Class 1
Slip Resistance	ASTM D-2047	> 0.6
Electrostatic Properties		
Static Electrical Charge	EN 1815	< 2 kV
Electrical Resistance	EN 1081	> 10 ¹⁰ ohms
Grading	IEC 1340-4-1	ASF Class 2
Impact Sound Reduction	EN ISO 140/8	+ 5 dB
	EN ISO 717/2	
Acoustic Improvement	NFS 31-074	+ 5 dB
Light Fastness	EN ISO 105-B02	≥ 6
Chemical Resistance	ASTM 925-02	No Change
Thermal Resistance	EN 12524	0.03 m ² K/W
Underfloor Heating		Suitable
Colors		40
Form of Delivery	EN 427	
Tile		Size 19.68" x 19.68" nominal (50 x 50 cm) Quantity 20 tiles per ctn 53.8 sq ft per ctn (5 m ² per ctn) Weight 42.01 lbs per ctn (19.05 kg per ctn)
3.25" Plank		Size 39.25" x 3.25" nominal (100 x 8.33 cm) Quantity 48 planks per ctn 43.04 sq ft per ctn (4 m ² per ctn) Weight 33.60 lbs per ctn (15.24 kg per ctn)
6.5" Plank		Size 39.25" x 6.50" nominal (100 x 16.66 cm) Quantity 24 planks per ctn 43.04 sq ft per ctn (4 m ² per ctn) Weight 33.60 lbs per ctn (15.24 kg per ctn)

Please visit johnsonite.com for the most updated specifications, and installation, cleaning and maintenance instructions.

How to Order:

Tile: IDM-T-(XXXX) Color Number | 3.25" Plank: IDM-P-(XXXX) Color Number - 3 | 6.5" Plank: IDM-P-(XXXX) Color Number - 6

The Johnsonite system includes several accessories, including transitions, finishing borders, wall base, cove fillers and caps to complete your flooring design and installation. The Johnsonite system simplifies the design process by allowing you to deal with a single knowledgeable source – a Johnsonite consultant – to help you create high-performance spaces that work hard for end-users.

Johnsonite
A Tarkett Company
16910 Munn Road
Chagrin Falls, OH 44023
800-899-8916 or 440-543-8916

Johnsonite®