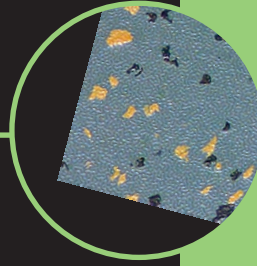


Roundel®

Speckled RUBBER TILE



Roundel® Speckled Rubber Tile provides another durable design choice to help create a special look for your space. It beautifully combines distinctive styling with all the practical benefits of rubber flooring. Plus, it's easy to maintain and resists wear, even in high traffic areas, while offering the lowest life-cycle cost of any flooring option.

The distinctive flecked appearance of Roundel Speckled Rubber Tile is available in a variety of color combinations. Choose from the **Artisan™** collection – twelve dark and neutral tones that work well with nearly any décor. Or – for a lighter, brighter look – try our **Vibrance™** collection. This exciting new addition includes eight vivid color combinations.

Because Speckled tile is part of the Roundel Rubber Flooring System, it integrates well with other Johnsonite flooring solutions. So you can confidently mix and match components of your own design. And you can easily complete your project with coordinating treads, risers, stringers, wallbase and accessories. Whether it's the center of your flooring design or simply an accent element, our Speckled tiles can add flair to any space.

Johnsonite®
Flooring Solutions to Integrate Design & Life-Safety



Roundel® Speckled

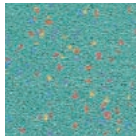
ROUNDEL® SPECKLED RUBBER TILE
BALANCES FUNCTIONALITY WITH
DISTINCTIVE STYLING.

- Larger 24" x 24" (610mm x 610mm) tiles install faster with fewer seams.
- Available in 12" x 12" size by special order for even greater design flexibility.
- Resists most chemicals, cigarette scorches and dents from impact and static loads.
- Unique formulation self-heals most scratches and abrasions.
- All surface textures are easy to maintain.
- Provides a naturally slip-resistant surface, meeting ADA recommendations for ramps and flat surfaces.

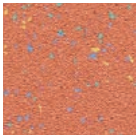
Vibrance™ Collection



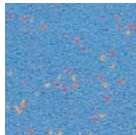
718
Sunburst



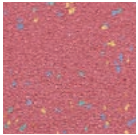
720
Aquamarina



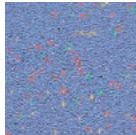
719
Citrus



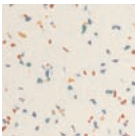
721
Blue Skies



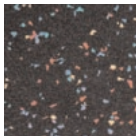
722
Watermelon



717
Wildflower



724
Confetti



723
Fireworks

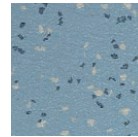
Artisan™ Collection



728
Sidewalk



711
Steam



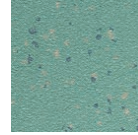
715
Ming Blue



713
Sahara



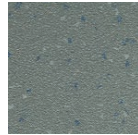
725
Meteor



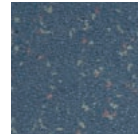
716
Celadon



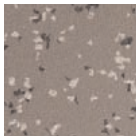
712
Curry



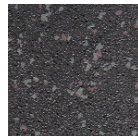
710
Saber



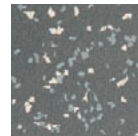
714
Azure



726
Mud Pie



709
Empire



727
Vine

SELECT FROM 5 SURFACE TEXTURES



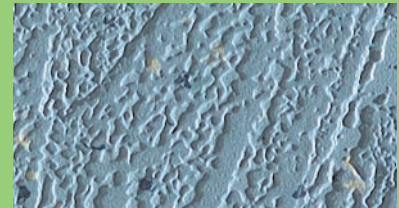
Weathered (WRTSP)

Standard in Artisan and Vibrance Collections.



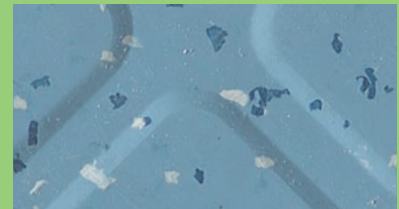
Hammered (HRTSP)

Standard in Artisan and Vibrance Collections.



Flagstone (FRTSP)

Standard in Artisan and Vibrance Collections.



Raised Square (RTSP)

Standard in Artisan and Vibrance Collections.



Raised Round (RTSP)

Special order for Artisan and Vibrance Collections.

| Color Designs | Surface Textures | Sizes | Thicknesses |
|------------------------------------|---|---|--------------------|
| Vibrance™ and Artisan™ Collections | Flagstone (FRTSP), Hammered (HRTSP), Weathered (WRTSP), Raised Square (RTSP), Raised Round (RTSP)* <i>* Special Order only</i> | 24" x 24" (610mm x 610mm) | .125" (3.175mm) |
| | | 12" x 12" (305mm x 305mm) <i>Special Order only</i> | .125" (3.175mm) |

Johnsonite®
Flooring Solutions to Integrate Design & Life-Safety

A Division of Duramax, Inc.
USA: (800) 899-8916 Fax (440) 543-8920
Canada: (800) 661-2162 Fax (519) 747-9155
www.johnsonite.com
e-mail: info@johnsonite.com

© 2000 Johnsonite, Div. of Duramax, Inc.
Printed in the USA 95000-725 12/00 306089