



Acoustical Surfaces, Inc.

SOUNDPROOFING, ACOUSTICS, NOISE & VIBRATION CONTROL SPECIALISTS

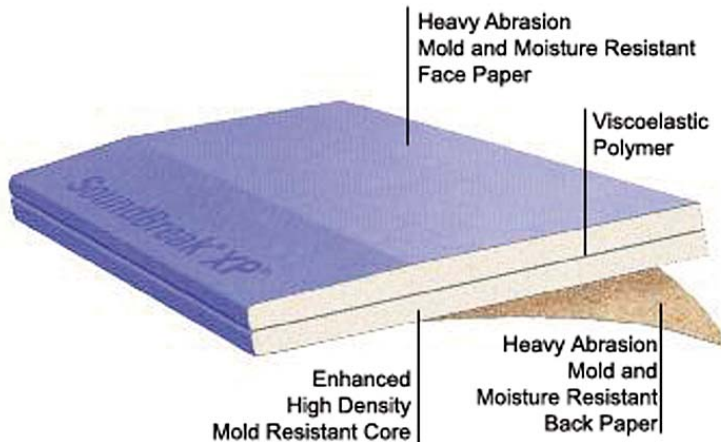
123 Columbia Court North • Suite 201 • Chaska, MN 55318

(952) 448-5300 • Fax (952) 448-2613 • (800) 448-0121

Email: sales@acousticalsurfaces.com

Visit our Website: www.acousticalsurfaces.com

We Identify and S.T.O.P. Your Noise Problems



SoundBreak® XP®

SoundBreak XP Acoustically Enhanced Gypsum Board

- Superior Sound Damping
- Acoustical Enhanced for High Rated STC Wall Assemblies
- Mold/Mildew/Moisture Resistant
- Approved For Use on Walls and Ceilings

Soundbreak XP Gypsum Board is an acoustically enhanced gypsum board used in the construction of high STC wall assemblies. This innovative gypsum board allows for construction of high STC wall assemblies that are thinner, cost effective and more reliable than traditional methods for constructing these types of assemblies.

SoundBreak XP Gypsum Board has an acoustically enhanced, high density gypsum core encased in a heavy, abrasion and mold/mildew/moisture resistant, 100% recycled, purple paper on both sides. Used in construction of high rated STC wall assemblies, SoundBreak XP consists of a layer of viscoelastic damping polymer sandwiched between two pieces of high density mold resistant gypsum board, providing constrained layer damping.

MARKET TRENDS DRIVING THE NEED FOR HIGHER RATED STC WALL PARTITIONS

Increasing land costs have resulted in larger amounts of high density multi-family housing in a growing number of United States housing markets. The result of high density housing is individual living units positioned closer together than traditional single-family housing.

Home theatre systems are becoming more prevalent in use and sophistication, resulting in the potential for more noise being transmitted between wall partitions. Commercial buildings such as schools, hospitals and hotels also have an increasing need to control sound between areas of a building.

All of these changing market dynamics have resulted in an increased need for higher rated Sound Transmission Class (STC) wall partitions, which reduce the transmission of airborne sound between living spaces within buildings.

Continued on next page...



Acoustical Surfaces, Inc.

SOUNDPROOFING, ACOUSTICS, NOISE & VIBRATION CONTROL SPECIALISTS

123 Columbia Court North • Suite 201 • Chaska, MN 55318

(952) 448-5300 • Fax (952) 448-2613 • (800) 448-0121

Email: sales@acousticalsurfaces.com

Visit our Website: www.acousticalsurfaces.com

We Identify and S.T.O.P. Your Noise Problem

FEATURES/BENEFITS

- Resists the growth of mold per ASTM G 21 with a score of 0, the best possible score.
- Resists the growth of mold per ASTM D 3272 with a score of 10, the best possible score.
- Use of SoundBreak XP Gypsum Board results in wall partitions with high rated STC values that are thinner than traditionally built high rated STC wall partitions providing increased usable floor space.
- Superior sound damping, cost-efficient material that is easily finished and decorated in the same manner as standard gypsum board.
- All SoundBreak XP Gypsum Board designs were tested by an independent third-party acoustical laboratory using the full-scale ASTM E90 test procedure.
- Heavy abrasion resistant paper and denser core provide greater resistance to surface abuse and indentation when tested in accordance with ASTM C 1629.
- Features a smooth, heavy face paper that is highly resistant to scuffing and provides a superior surface for decoration.
- 5/8" SoundBreak XP features a fire resistant Type X core and is UL Classified and approved for inclusion in specific UL fire-rated designs.
- SoundBreak XP Gypsum Board is GREENGUARD Children & SchoolsSM Certified for indoor air quality.
- Approved for use on walls and ceilings.

LIMITATIONS

- Exposure to excessive or continuous moisture and extreme temperatures should be avoided. SoundBreak XP Gypsum Board is not recommended where it will be exposed to temperatures exceeding 125°F (52°C) for extended periods of time.
- Installing SoundBreak XP Gypsum Board panels over an insulating blanket, installed continuously across the face of the framing members, is not recommended. Blankets should be recessed and flanges attached to the sides of the studs.
- SoundBreak XP Gypsum Board must be stored off the ground and under cover. Sufficient risers must be used to ensure support for the entire length of the gypsum board to prevent sagging.
- SoundBreak XP Gypsum Board must be kept dry to minimize the potential for mold growth. Adequate care should be taken while transporting, storing, applying and maintaining SoundBreak XP Gypsum Board. For additional information, refer to the Gypsum Association publication, "Guidelines for the Prevention of Mold Growth on Gypsum Board" (GA-238-03), which is available at gypsum.org under the "Download Free Gypsum Association Publications" section.

ACCESSORIES

- Fasteners: Drywall Screws or Nails
- Joint Tape
- Joint Compound
- Cornerbead
- Trims
- Casing Beads
- Acoustical Sealant
- Acoustical Putty Pads

Continued on next page...



Acoustical Surfaces, Inc.

SOUNDPROOFING, ACOUSTICS, NOISE & VIBRATION CONTROL SPECIALISTS

123 Columbia Court North • Suite 201 • Chaska, MN 55318

(952) 448-5300 • Fax (952) 448-2613 • (800) 448-0121

Email: sales@acousticalsurfaces.com

Visit our Website: www.acousticalsurfaces.com

We Identify and S.T.O.P. Your Noise Problem

DESIGN CONSIDERATIONS IN ACOUSTICAL WALL PARTITIONS

The goal of a high rated STC wall partition is to decrease the amount of sound transmission through the partition. The following five variables can have impact on the ability of the partition to provide this loss.

Mass

Increasing the mass of a wall partition increases the amount of sound transmission loss. Increasing mass in a cost and space effective way can be a challenge.

Stiffness

Increasing the stiffness of a wall partition will decrease the amount of sound transmission loss. For that reason metal studs outperform wood studs, and 24" o.c. framing spacing outperforms 16" o.c. framing spacing.

Damping

Introduction of damping will increase the amount of sound transmission loss. In particular, constrained layer damping can be effective for structure type applications.

Cavity Depth

Increasing the depth of the cavity of the partition can increase the amount of sound transmission loss, especially when the cavity is filled with acoustical insulation.

Cavity Absorption

Adding sound-absorbing material such as fiberglass or mineral fiber insulation to the cavity of a partition will increase the amount of sound transmission loss. The sound-absorbing material should completely fill the cavity but not be compacted or compressed in any way.

WHAT IS AN ACCEPTABLE STC RATING FOR A WALL PARTITION?

National Research Council of Canada Survey

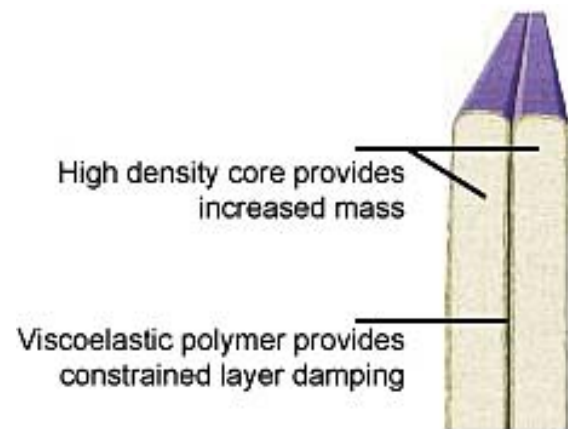
- 600 multi-family residences (300 party walls between them)
- Residents with lower STC rated walls are more likely to:
 - Want to move
 - Be awakened by noises
 - Have trouble falling asleep due to noises
 - Think neighbors are less considerate

GENERAL SURVEY CONCLUSIONS

- $STC \geq 55$ - A realistic goal for acceptable sound insulation
- $STC \geq 60$ - More ideal, would practically eliminate negative effects of noise from neighbors
- Music related sounds may require the highest rated walls

J.S. Bradley, Deriving Acceptable Values for Party Wall Sound Insulation survey results

HOW SOUNDBREAK XP GYPSUM BOARD WORKS



Continued on next page...



Acoustical Surfaces, Inc.

SOUNDPROOFING, ACOUSTICS, NOISE & VIBRATION CONTROL SPECIALISTS

123 Columbia Court North • Suite 201 • Chaska, MN 55318

(952) 448-5300 • Fax (952) 448-2613 • (800) 448-0121

Email: sales@acousticalsurfaces.com

Visit our Website: www.acousticalsurfaces.com

We Identify and S.T.O.P. Your Noise Problem

APPLICABLE STANDARDS AND REFERENCES
ASTM C 1396
ASTM C 1629
ASTM C 840
ASTM D 3273
ASTM G 21
Gypsum Association GA-216
Gypsum Association GA-214

PHYSICAL PROPERTIES		
Thickness, nominal	1/2" Regular (12.7 mm)	5/8" Type X (15.9 mm)
Width, nominal	4' (1219 mm)	4' (1219 mm)
Length, standard	8' through 12' (2438 mm - 3657 mm)	8' through 12' (2438 mm - 3657 mm)
Weight, lbs./sq. ft, nominal	2.3	2.3
Surface Burning Characteristics (per ASTM E 84)	Flame Spread: 15 Smoke Developed: 0	Flame Spread: 15 Smoke Developed: 0
Surface Abrasion Resistance (per ASTM C 1629)	Level 3	Level 3
Indentation Resistance (per ASTM C 1629)	Level 1	Level 1
Soft Body Impact Resistance (per ASTM C 1629)	Level 1	Level 1

Continued on next page...

- Soundproofing Products • Sonex™ Ceiling & Wall Panels • Sound Control Curtains • Equipment Enclosures • Acoustical Baffles & Banners • Solid Wood & Veneer Acoustical Ceiling & Wall Systems
- Professional Audio Acoustics • Vibration & Damping Control • Fire Retardant Acoustics • Hearing Protection • Moisture & Impact Resistant Products • Floor Impact Noise Reduction
- Sound Absorbers • Noise Barriers • Fabric Wrapped Wall Panels • Acoustical Foam (Egg Crate) • Acoustical Sealants & Adhesives • Outdoor Noise Control • Assistive Listening Devices
- OSHA, FDA, ADA Compliance • On-Site Acoustical Analysis • Acoustical Design & Consulting • Large Inventory • Fast Shipment • No Project too Large or Small • Major Credit Cards Accepted



Acoustical Surfaces, Inc.

SOUNDPROOFING, ACOUSTICS, NOISE & VIBRATION CONTROL SPECIALISTS

123 Columbia Court North • Suite 201 • Chaska, MN 55318


(952) 448-5300 • Fax (952) 448-2613 • (800) 448-0121

Email: sales@acousticalsurfaces.com


Visit our Website: www.acousticalsurfaces.com

We Identify and S.T.O.P. Your Noise Problem

1/2" REGULAR GYPSUM BOARD PARTITIONS — WOOD FRAMING

Description	Test No.	STC
SINGLE LAYER - 2X4 STUDS		
 <p>1/2" Regular Gypsum Board vertically applied to each side of 2x4 studs 16" o.c. with 1-1/4" type W screws 12" o.c. Joints staggered on opposite side. 3" glass fiber insulation in stud cavity.</p>	NBC-W1b	34

1/2" SOUNDBREAK XP GYPSUM BOARD PARTITIONS — WOOD FRAMING


Description	Test No.	STC
SINGLE LAYER - 2X4 STUDS		
 <p>1/2" SoundBreak XP Gypsum Board vertically applied to one side of 2x4 studs 24" o.c. with 1-1/4" type W screws 12" o.c. 1/2" Standard Gypsum Board vertically applied to opposite side with 1-1/4" type W screws 12" o.c. Joints staggered on opposite side. 3" glass fiber insulation in stud cavity.</p>	NGC 2009027	49

UNBALANCED - 2X4 STUDS



<p>Base layer of 1/2" Standard Gypsum Board vertically applied to one side of 2x4 studs 24" o.c. with 1-1/4" type W screws 24" o.c. Face layer of 1/2" SoundBreak XP Gypsum Board vertically applied with 1-5/8" type W screws 12" o.c. 1/2" Standard Gypsum Board vertically to opposite side with 1-1/4" type W screws 12" o.c. Joints staggered each layer and opposite sides. 3" glass fiber insulation in stud cavity.</p>	NGC 2009028	51
---------------------------------------------------------------------------------------------------------------------------------------------------------------------------------------------------------------------------------------------------------------------------------------------------------------------------------------------------------------------------------------------------------------------------------	-------------	----

5/8" SOUNDBREAK XP GYPSUM BOARD PARTITIONS — WOOD FRAMING

Fire Rating	Description	Test No.	STC
SINGLE LAYER - 2X4 STUDS			
1 hr.	 <p>5/8" SoundBreak XP Gypsum Board vertically applied to each side of 2x4 studs spaced 24" o.c. with 1-1/4" type W screws 12" o.c. 3-1/2" glass fiber in stud cavity.</p>	RAL TL-07-145	53
Ref.	Design No.		
UL	U309		

Continued on next page...



Acoustical Surfaces, Inc.

SOUNDPROOFING, ACOUSTICS, NOISE & VIBRATION CONTROL SPECIALISTS

123 Columbia Court North • Suite 201 • Chaska, MN 55318

(952) 448-5300 • Fax (952) 448-2613 • (800) 448-0121

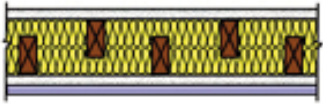
Email: sales@acousticalsurfaces.com

Visit our Website: www.acousticalsurfaces.com

We Identify and **S.T.O.P.** Your Noise Problem

UNBALANCED STAGGERED - 2X4 STUDS

1 hr.



Ref. Design No.

GA Based on WP3514

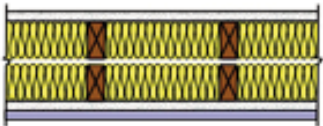
Base layer 5/8" Fire-Resistance Rated Gypsum Board vertically applied to staggered 2x4 studs spaced 16" o.c. on 2x6 plates with 1-1/4" type W screws 12" o.c. Face layer of 5/8" SoundBreak XP vertically applied with 2" type W screws 16" o.c. 5/8" Fire-Resistance Rated Gypsum Board vertically applied to opposite side with 1-1/4" type W screws 12" o.c. Vertical joints staggered 16" each layer and opposite sides. 2-1/2" glass fiber in stud cavity.

[RAL TL-07-170](#)

60

UNBALANCED DOUBLE ROW - 2X4 STUDS

1 hr.



Ref. Design No.

GA Based on WP3514

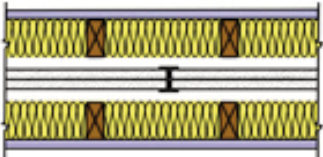
Base layer 5/8" Fire-Resistance Rated Gypsum Board vertically applied to double row of 2x4 studs spaced 16" o.c. on separate plates with 1-1/4" type W screws 12" o.c. Face layer of 5/8" SoundBreak XP vertically applied with 2" type W screws 16" o.c. 5/8" Fire-Resistance Rated Gypsum Board vertically applied to opposite side with 1-1/4" type W screws 12" o.c. Vertical joints staggered 16" each layer and opposite sides. 3-1/2" glass fiber in stud cavity.

[RAL TL-07-147](#)

64

H-STUD AREA SEPARATION WALL

2 hr.



Ref. Design No.

UL U347

Two layers of 1" Fire-Shield Shaftliner inserted in 2" H-studs spaced 24" o.c. Minimum 3/4" air space between shaftliner and adjacent construction.

[NRCC B-3451.1](#)

67

5/8" Soundbreak XP Gypsum Board vertically applied to outside of 2x4 studs spaced 16" o.c. with 1-1/4" type W screws 12" o.c. 3-1/2" glass fiber in stud cavity.

5/8" SOUNDBREAK XP GYPSUM BOARD PARTITIONS — STEEL FRAMING

Fire Rating	Description	Test No.	STC
-------------	-------------	----------	-----

SINGLE LAYER - 3-5/8" STUDS

1 hr.



Ref. Design No.

UL U465

5/8" SoundBreak XP Gypsum Board vertically applied to one side of 3-5/8" steel studs 24" o.c. with 1" type S screws 8" o.c. at perimeter and 12" o.c. in the field. 5/8" Fire-Resistance Rated Gypsum Board vertically applied to opposite side with 1" type S screws 8" o.c. at perimeter and 12" o.c. in the field. Joints staggered on opposite side. 3-1/2" glass fiber in stud cavity.

[RAL TL-07-389](#)

54

Continued on next page...



Acoustical Surfaces, Inc.

SOUNDPROOFING, ACOUSTICS, NOISE & VIBRATION CONTROL SPECIALISTS

123 Columbia Court North • Suite 201 • Chaska, MN 55318


(952) 448-5300 • Fax (952) 448-2613 • (800) 448-0121

Email: sales@acousticalsurfaces.com


Visit our Website: www.acousticalsurfaces.com

We Identify and **S.T.O.P.** Your Noise Problem


UNBALANCED - 3-5/8 STUDS

1 hr.		Base layer 5/8" SoundBreak XP Gypsum Board vertically applied to 3-5/8" steel studs spaced 24" o.c. with 1" type S screws 24" o.c. Face layer 5/8" Fire-Resistance Rated Gypsum Board vertically applied with 1-5/8" type S screws 12" o.c. 5/8" Fire-Resistance Rated Gypsum Board vertically applied to opposite side with 1" type S screws 12" o.c. Vertical joints staggered 24" each layer and opposite sides. 3-1/2" glass fiber in stud cavity.	RAL TL-06-334	57
Ref.	Design No.			
UL	UL465			

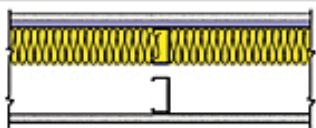
DOUBLE LAYER - 3-5/8 STUDS

2 hr.		Base layer 5/8" Soundbreak XP Gypsum Board vertically applied to 3-5/8" steel studs spaced 24" o.c. Two layers 5/8" Fire-Resistance Rated Gypsum Board vertically applied to opposite side. Base layer attached with 1" type S screws 24" o.c. Face layer attached with 1-5/8" type S screws 12" o.c. Vertical joints staggered 24" each layer and opposite sides. 3-1/2" glass fiber in stud cavity.	RAL TL-07-168	60
Ref.	Design No.			
UL	V484			

DOUBLE LAYER - 6" STUDS

2 hr.		Base layer 5/8" SoundBreak XP Gypsum Board vertically applied to 6" steel studs spaced 24" o.c. with 1" type S screws 24" o.c. Face layer 5/8" Fire-Resistance Rated Gypsum Board vertically applied with 1-5/8" type S screws 12" o.c. Two layers 5/8" Fire-Resistance Rated Gypsum Board vertically applied to opposite side. Base layer attached with 1" type S screws 24" o.c. Face layer attached with 1-5/8" type S screws 12" o.c. Vertical joints staggered 24" each layer and opposite sides. 6" glass fiber in stud cavity.	NRCC B-3456.2	61
Ref.	Design No.			
UL	V484			

UNBALANCED DOUBLE ROW - 2-1/2" STUDS

1 hr.		Base layer 5/8" SoundBreak XP Gypsum Board applied vertically to double row of 2-1/2" steel studs 24" o.c. with 1" type S screws 8" o.c. at perimeter and 12" o.c. in the field. Face layer 5/8" Fire-Resistance Rated Gypsum Board applied vertically to opposite side with 1" type S screws 8" o.c. at perimeter and 12" o.c. in the field. Joints staggered on opposite side. 3" glass fiber or mineral wool insulation in stud cavity.	NGC 2008036	59
Ref.	Design No.			
UL	V488			

Continued on next page...



Acoustical Surfaces, Inc.

SOUNDPROOFING, ACOUSTICS, NOISE & VIBRATION CONTROL SPECIALISTS

123 Columbia Court North • Suite 201 • Chaska, MN 55318

(952) 448-5300 • Fax (952) 448-2613 • (800) 448-0121

Email: sales@acousticalsurfaces.com

Visit our Website: www.acousticalsurfaces.com

We Identify and S.T.O.P. Your Noise Problem

Note: In multi-layer systems, SoundBreak XP Gypsum Board can be used as either a face layer or a base layer without affecting the STC Rating.

UL Listed Assemblies

The 5/8" SoundBreak XP Gypsum Board is tested in accordance with ASTM Standard E 119 and is classified as Type X for use in the following UL listings: U017, U301, U302, U305, U309, U326, U330, U332, U338, U339, U341, U342, U351, U354, U355, U356, U357, U358, U360, U364, U368, U369, U371, U379, U392, U405, U411, U418, U420, U425, U428, U429, U434, U439, U449, U450, U460, U465, U466, U475, U487, U494, U499, U505, U524, U525, U531, U646, U647, U648, U649, U651, U652, U926, V408, V415, V419, V420, V421, V425, V430, V432, V433, V434, V435, V438, V449, V450, V486, V483, V484, V488

UL Core Designation

5/8" SoundBreak XP Gypsum Board: SoundBreak XP