

# **CHILDERS**

**CARPORTS & STRUCTURES, INC.**



**GALVANIZED  
STEEL**

**EYEBROW  
CANOPIES**

**WALKWAY  
COVERS**

**COMMERCIAL  
AND  
INDUSTRIAL  
STRUCTURES**

**PRE-  
ENGINEERED,  
PRE-  
FABRICATED  
CARPORTS**

**SPECIAL  
STRUCTURES**



**OUR QUALIFIED STAFF PROVIDES ENGINEERING, DETAILS, INSTALLATION, DRAWINGS,  
AND OTHER ASSISTANCE IN ALL PHASES OF YOUR PROJECT**

11711 BRITTMORE PARK DRIVE, HOUSTON, TX 77041  
PHONE: 713-460-2181 FAX: 713-460-2566  
[www.childersonline.com](http://www.childersonline.com)



# CHILDERS

## Introduction

Founded in 1947 Childers has become America's largest manufacturer of pre-engineered, pre-fabricated carports, walkways, covers, industrial canopies, and special structures to the construction industry. The combination of design engineering, manufacturing, marketing, and installation programs has made Childers the top source for both canopies and carports.

Childers light gauge metal fabrication facilities produce canopy systems designed and engineered to meet the highest quality standards as well as the simplest installation requirements. All of Childers various systems are easy to install and offer



pre-fabricated structural members with bolted connections, factory cut-to-length panels, factory formed trims, and all miscellaneous hardware which eliminates any need for costly jobsite welding or fabrication.

Childers Carports and Structures, Inc. has built a highly qualified staff of sales, engineering, technical and production personnel, all experts in the canopy industry. This qualified staff is available to provide engineering, installation drawings, details and any other assistance that may be required throughout all phases of a project.

For the Childers representative servicing your location, contact our home office at (713) 460-2181

Please visit our website at:  
[www.childersonline.com](http://www.childersonline.com)

# CHILDERS

## Materials Finishes Colors

Childers carports and structures are engineered to meet the highest quality standards. Columns are manufactured from high strength steel tubing with a minimum yield point of 46,000 psi (ASTM A-500, Grade B). The hot-dip galvanized coating is an average of 2.00 oz. psf after fabrication. Structural panels are cold formed from high strength galvanized steel with a minimum yield point of 50,000 psi. The ASTM A-525, G-90 galvanized panels are furnished either unpainted or with a factory applied baked paint finish on topside and uniform wash-coat on the underside. Framing members are manufactured from galvanized high strength steel with a minimum yield point of 50,000 psi.

Childers finishes are a two coat paint system consisting of a primer coat and a polyester top coat applied over HDG, G-90 galvanized steel. On larger orders non-standard colors are available, with slightly longer lead times and cost considerations. Contact Childers for requirements. Please note that the color presentation is as close as possible to actual color offering within printing standards. Actual painted metal chips are available upon request.

### COVER PHOTOS

Cust: Corte Ent.  
Windsor Village Elementary.  
Houston, TX; GWC-9 with 6" Biscayne Trim

Cust: W.G. Yates; R & M Energy Systems.  
Willis, TX; SS-9 with 18" Bullnose Trim



COP-R-PANEL



CHOC-LET-PANL



WHITE



PEBBLE TAN



Cust: Hunnicutt Const.; Evergreen Strip Center #2; Loc: Bentonville, AR.; EB-9 with 18" Bullnose Trim



Customer: Thompson Realty Corp.; Proj: Atrium Office; Loc: Richardson, TX.  
Model: SC-9 with Biscayne Trim.

# CHILDERS

## Eye brow Canopies

Childers' unique design for mar-quees, entrance canopies and load-ing dock covers totally eliminates the use of sag rods or valance hangers, while providing a minimum 30 psf live loads and a 25 psf horizontal wind load. Only Childers can offer an architecturally appealing product with this unique design in widths (depths) of 4 feet to 10 feet. The material specifications are the same as those of our pre-engineered, pre-fabricated structure product.

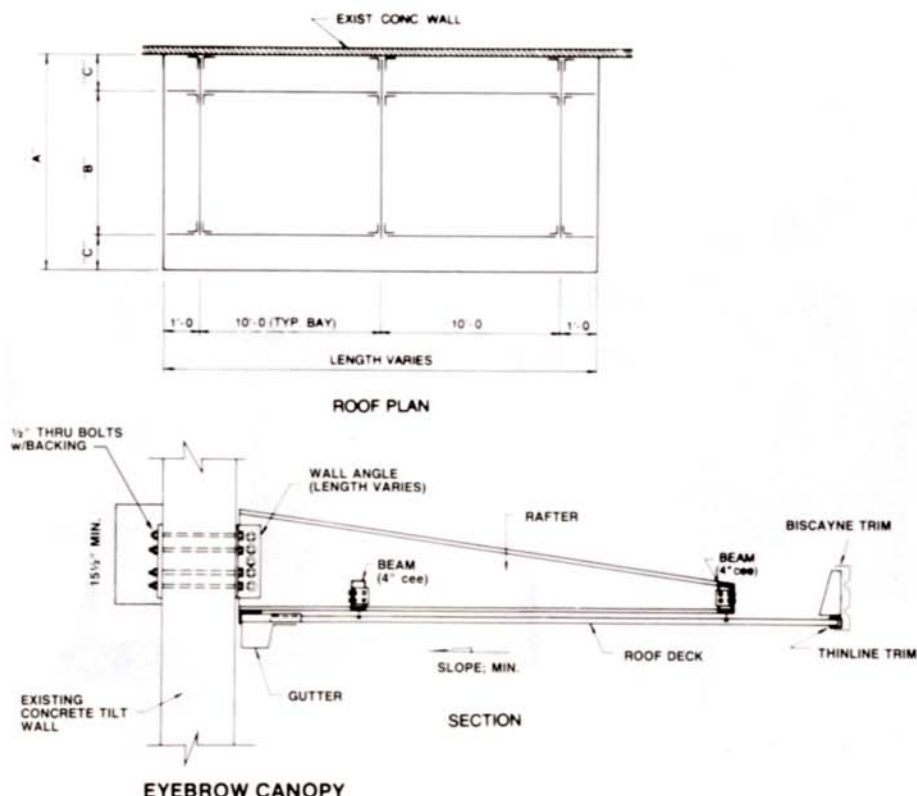


Customer: Hill Partners MGM.; Project: 2521 & 2523 Fairway Park;  
Location: Houston, TX ; Model: EB-9 5'-0" Projection with 12" Nassau Trim

### STANDARD MODELS

DIMENSION SCHEDULE			
MODEL	"A"	"B"	"C"
EB-16 x 4'-0"	4'-0"	2'-0"	1'-0"
" x 6'-0"	6'-0"	3'-0"	1'-6"
" x 8'-0"	8'-0"	4'-0"	2'-0"
" x 10'-0"	10'-0"	5'-0"	2'-6"

\* THESE UNITS REQUIRE DOUBLE RAFTERS



Customer: Maynard Enterprises.;  
Project: Shelby Commerce Park;  
Location: Calera, AL  
Model: EB-9 4'-0" Projection with 12" Bullnose Trim





## Pre-Engineered Walkway Cover Systems

Schools, churches, hospitals, commercial buildings, industrial plants—wherever you need walkway covers, Childers provides a maintenance-free, eye-pleasing walkway cover system to complement any architectural style—at a cost that will meet budget requirements.

All components are heavily galvanized with high purity zinc to provide a maintenance-free system. (Roof panels and trim are available with a factory applied polyester paint finish over the galvanized coating.)

By choosing one of Childers Walkway Systems which fits your architectural requirements, you can be assured of the highest quality pre-engineered, pre-fabricated, maintenance-free galvanized steel system available.

Childers now offers five different systems:

- Childers Model WCS  
Walkway cover with fascia gutter, integral drainage system and soffit.
- Childers Model WCD  
Walkway cover with an internal drainage system.
- Childers Model WC  
Our utilitarian walkway cover available with your choice of trim style and/or gutter.
- Childers Model GWC Gable  
walkway cover
- Childers Model GWCS Gable  
walkway cover with soffit and internal drainage system.



Customer: Danville Findorf G.C.; Project: Cope Center School; Location: Miami, FL; Model: GWC-9; Architect: Zyscovich Architects



Customer: GLF Const.; Project: Southern Oaks Middle School; Location: Port St. Lucie, FL; Model: WC-9 with Biscayne Trim

Childers pre-engineered walkway cover systems have economy and versatility built in to suit any need. Childers offers full design capability on our standard walkway cover system as well as an in-house Engineering Department for any special

walkway cover requirements. Certified shop drawings and engineering calculations are furnished on request.

Let a local Childers Representative show you the cost saving advantage of a Childers Walkway System.



Customer: Manhattan Const.; Project: Cigna Health Care; Location: Irving, TX  
Model: WC-9 with Biscayne Trim



Customer: JBM Builders.; Project: Hurst Hills Elem.  
Location: Hurst, TX  
Model: WC-9 15'wide with 12" Nassau Trim

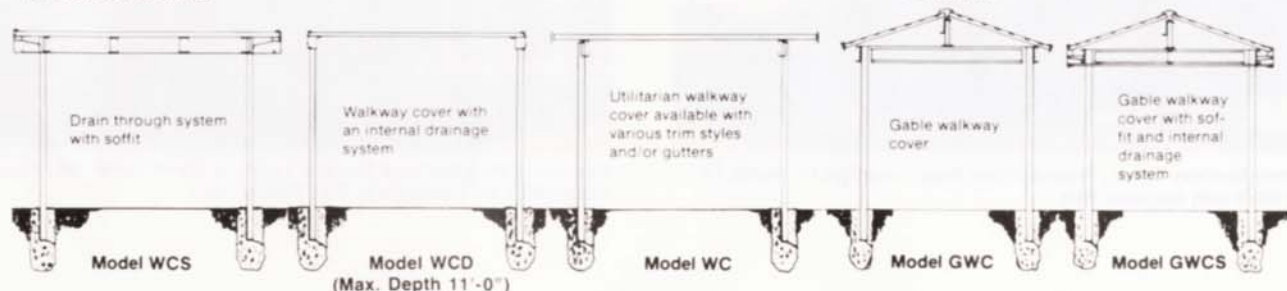


Customer: M. Stephens & Company; Project: Universal Technical Institute; Location: Glendale Heights, IL; Model: WC-11 with Biscayne Gutter Drain-Thru; Architect: Model Design Lab, Inc.



Customer: BFW Construction; Project: Justin Jr. High School; Location: Justin, TX; Model: WCS-9 with Vertical Mansard Trim; Architect: Pfluger Associates

#### TYPICAL DESIGNS







## Commercial and Industrial Structures

Childers various systems offer the architect and developer the tools for greater design flexibility meeting a high level of aesthetic quality. Not only does Childers offer a complete line of standard models which blend with any setting as well as complementing various architectural design; it also meets special customer requirements. The engineering, and technical staff of Childers are ready to work with the architect or designer to meet any custom job-site conditions or special customer requirements.

The economy of Childers Structures is the result of simple design, pre-fabrication and mass-production.

- Pre-engineered of cold formed, high strength steel.
- All-galvanized steel construction requires little maintenance.
- Pre-engineered modular components bolt together — no costly job site fabrication or welding is required.

- Architecturally compatible with all settings.
- Pre-engineered to meet all building code requirements and/or customer specifications.
- Covered parking for office buildings.
- Automotive and heavy equipment storage.
- Recreational vehicle storage.
- People shelter.

Listed below are some applications of Commercial and Industrial structures.

**Roof top carports for multi-level parking garages.**

**Gas island canopies.**

**Customer applications.**

**Bank drive-thru canopies.**

**Car wash structures.**

**Dock canopies.**

**Industrial storage.**



Customer: Carbone Construction; Project: South Hills Office Development; Location: Cleveland, OH; Model: NE-11 with 18" Bullnose Trim; Architect: Richard L. Bowen & Associates



Customer: Berkeley Const.; Project: Office Bldg.; Location: Ft. Worth, TX  
Model: GC-9 with Biscayne Trim



Customer: Neighborhood Storage; Location: 12610 Tanner Rd., Houston, TX  
Model: SS-9 RV Canopy with 2-1/2" Thinline Trim

# CHILDERS

## Carports

Childers delivers a complete canopy package easily erected, without costly job-site welding or fabrication. In addition, the cost of customer engineering and design is eliminated.

### Features and Benefits

Engineering to meet loading and building code requirements anywhere.

Calculations and shop drawings certified by a Registered Professional Engineer furnished upon request.

All framing member and structural roof panels cold formed from high strength steel, heavily galvanized with high purity zinc coating. Minimum average 1.25 oz. psf.

Childers columns are galvanized after fabrication with high purity zinc coating that averages 2.00 oz. psf.



Customer: Maxie Corp.; Project: Commercial Building Parking Garage; Location: Houston, TX; Model: NE-9 with Biscayne Trim

All structures are pre-engineered and pre-fabricated for fast easy erection with no costly job welding. All structural framing bolts together; with the roof panels fastening to the frame with self-drilling screws. Exclusive structural design which allows a 3-car bay construction; single or double-row parking. Also adaptable for diagonal parking when required.

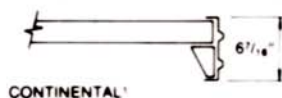
Architecturally designed with your choice of Thinline, Continental,

Biscayne, Bullnose, Nassau or Mansard fascia trim styles with integral gutters if required. These standard trims compliment any architectural design and harmonize with any setting. Childers is also capable of supplying fascia treatment to meet the customers special requirements. Please contact the local representative for the various quantity and price consideration.

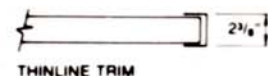
Full freight allowed anywhere in the Continental U.S.A.

### AVAILABLE ROOF TRIMS

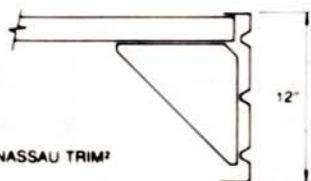
Custom trim available upon request. Please inquire about details.



CONTINENTAL<sup>1</sup>

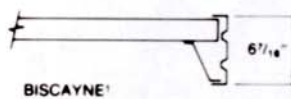


THINLINE TRIM

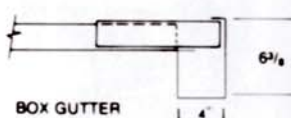


12" NASSAU TRIM<sup>2</sup>

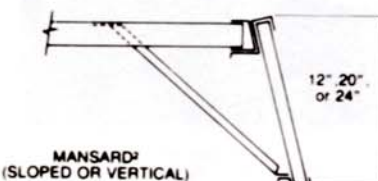
1 — AVAILABLE WITH INTEGRAL GUTTER



BISCAYNE<sup>1</sup>

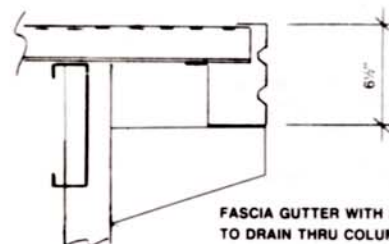


BOX GUTTER

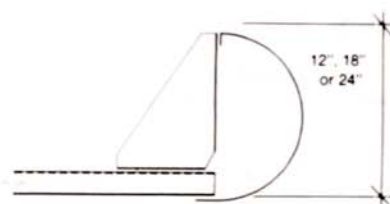


MANSARD<sup>2</sup>  
(SLOPED OR VERTICAL)

2 — AVAILABLE WITH BOX GUTTER



FASCIA GUTTER WITH LEADER  
TO DRAIN THRU COLUMN



BULLNOSE TRIM  
(w/GUTTER: OPTIONAL)

### TYPICAL DESIGNS



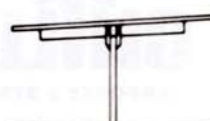
GABLE



WIND BREAKER



NEWPORT



ARLINGTON



DETROIT



# CHILDERS

## General Specifications

### SPECIFICATIONS PART 1 GENERAL

#### 1.1 WORK INCLUDED

- A. Furnish and install prefabricated steel canopies, walkways covers, carports, or special structures.

#### 1.2 RELATED WORK

- A. Concrete: General contractor shall block out openings in concrete slab at each column location.

#### 1.3 REFERENCES

- A. **ASTM A-500** - Specification for Structural Tubing for construction of bridges and buildings.  
B. **ASTM A-653** - Specification for Steel Sheet, zinc coated by the hot-dip process, structural quality.  
C. **ASTM A-924** - General requirements for Steel Sheet, metallic coated by the hot-dip process.  
D. **AISI** - Specification for the Design of Cold-Formed steel structural members.

#### 1.4 SYSTEM DESCRIPTION

- A. Design of canopy shall be in accordance with applicable local building Codes and certified by a registered Professional Engineer.

#### 1.5 QUALITY ASSURANCE

- A. Manufacturer: Shall have a minimum of 20 years experience in the manufacture and supplying of steel canopies.  
B. Installer: Shall have a minimum of 5 years experience installing pre-engineered steel canopies. Installation shall be in accordance with manufacturers shop drawings.

#### 1.6 REGULATORY REQUIREMENTS

- A. Conform to the Local Building Code Requirements.

#### 1.7 SUBMITTALS

- A. Submit shop drawings and product data.  
B. Submit two 2" x 3" color samples for selection of roof deck and trim.  
C. Submit manufacturer's certificate that materials meet or exceed these specifications.

#### 1.8 DELIVERY, STORAGE AND HANDLING

- A. Deliver products to site.  
B. Store and protect products.  
C. Store materials on site in a manner so they will not be damaged. Materials shall be placed so water will drain and not accumulate.

#### 1.10 WARRANTY

- A. Provide one year manufacturer's warranty.  
B. Warranty: Includes coverage of materials and workmanship.

### PART 2 PRODUCTS

#### 2.1 ACCEPTABLE MANUFACTURERS

- A. Childers Carports & Structures, Inc., Houston, Texas. 713/460-2181

#### 2.2 MATERIALS

- A. Roof deck and trim shall be pre-painted, hot-dip galvanized steel meeting ASTM Specification A-653, Grade 50, 50,000 psi yield. Galvanizing shall meet ASTM Specification A-924, G-90 Class. Paint shall be factory applied baked polyester with a full coat on color side and a uniform wash coat on reverse.  
B. Roof beams shall meet ASTM Specification A-653 Grade 50, 50,000 psi yield. Galvanizing shall meet ASTM Specification A-924, G-90 Class.  
C. Columns shall be square tubes meeting ASTM Specifications A-500, Grade B. Columns shall be hot-dip

galvanized after fabrication with a minimum zinc coating of 2 ounces per square foot.

### PART 3 EXECUTION

#### 3.1 INSPECTION

- A. Verify that canopies are installed straight and true.

#### 3.2 INSTALLATION

- A. Install canopy in accordance with manufacturer's drawings and specifications.

#### 3.3 TOLERANCES

- A. Maximize Variations From Plan or Location Indicated on Drawings: None.  
B. Maximize Offset From True Alignment between Adjacent Members Butting or In Line: None

#### 3.4 ADJUSTING AND CLEANING

- A. Clean up site and remove excess material.

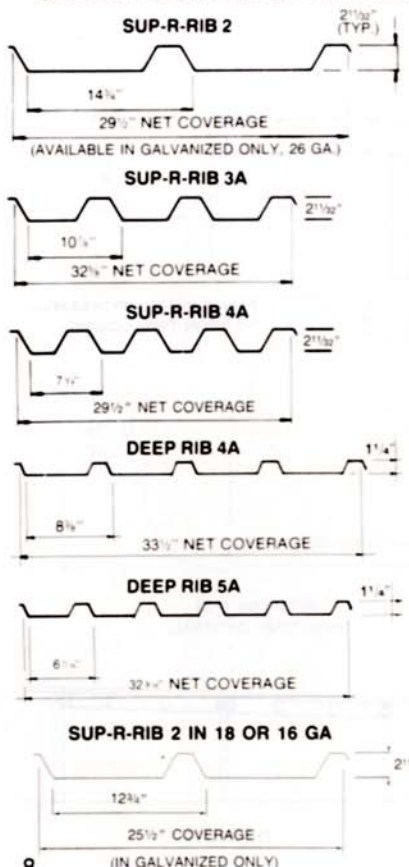
#### 3.5 PROTECTION

- A. Protect finished installation.

## CHILDERS

### Panel Profiles

#### STRUCTURAL ROOF PANELS

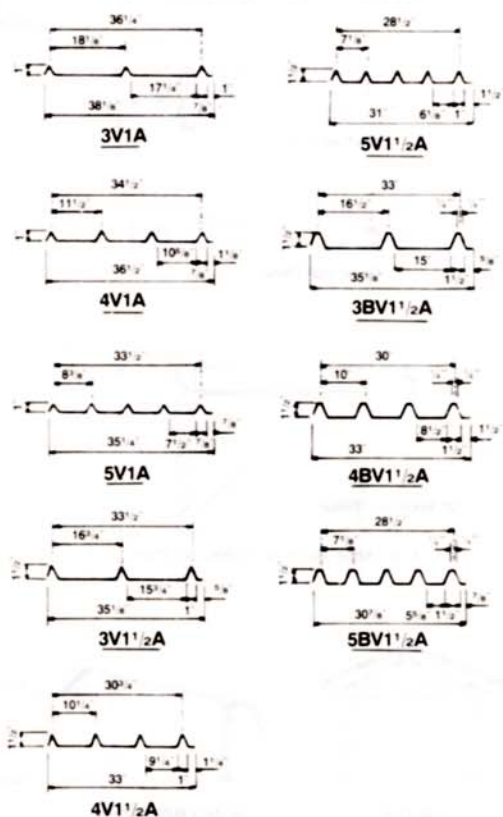


#### PANELS IN STANDARD 26 GA. MATERIALS



Customer: T.W. Foster Incorporated,  
General Contractor; Project: American  
Airlines Learning Center; Location: Arlington,  
TX; Architects: Corgan Associates

#### ARCHITECTURAL PANELS



**CHILDERS**  
CARPORTS & STRUCTURES, INC.

P.O. Box 800397  
Houston, Texas 77280-0397  
(713) 460-2181  
FAX (713) 460-2566  
[www.childersonline.com](http://www.childersonline.com)