

CUSTOM BENDING

In addition to manufacturing products for our stock catalog, the **Wagner OEM** group contracts services for others. We have the experience and facilities for any stamping or bending demand.

INDUSTRIAL PRODUCTS

Bending, beading, cutting, punching, drilling, tapping, threading, flaring, machining, swaging, rolling, welding, polishing and design assistance are all services within **Wagner's** capabilities.

Wagner OEM can provide assemblies and kitting services as well as water jet cutting, custom polishing, tube and structural shape laser functions, and other surface treatments to OEM clients and commercial users using mild steel, stainless, aluminum, brass, bronze and cooper.

ARCH SHAPES

The Wagner Companies present a high quality supplier option uniquely positioned to provide you with competitive alternatives regardless if your order is small or large in quantity. **Wagner** can address all of your needs.



AI • Estimating



Food Processing



Building and Contracting Trades



Building and Contracting Trades



Transportation



Lawn and Garden



Recreational Applications



Medical



Miscellaneous

STAMPING

- 1/4" x 10' Amada Shear Mild Steel
- Thirty-four Presses from 10 Ton to 400 Ton
- Coil Capacity to 1/4" x 12" Mild Steel
- Various Coil Cradles, Straighteners and Reels



Metals available include mild steel, stainless, aluminum, brass, copper and bronze.



George • Bending



Megan • Estimating



SECONDARY PRODUCTS EQUIPMENT

- Eleven Drilling and Tapping Presses
- Two Multi-head Drill Presses
- Four Deburring/Tumbling/Drying Machines to 24 Cubic Feet
- Two Hot Water Dip and Rinse Machines
- Water Wash Degreaser - Hot Pressure Wash

CUSTOM BENDING

INDUSTRIAL PRODUCTS

ARCH SHAPES

CUSTOM BENDING

INDUSTRIAL PRODUCTS

ARCH SHAPES

BENDING

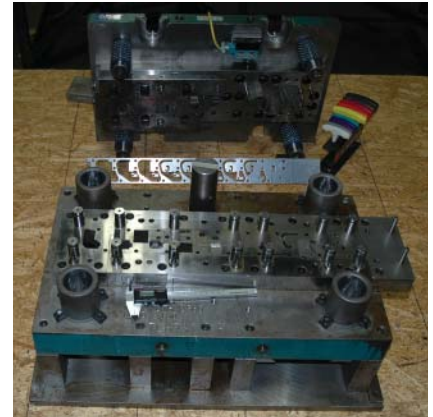
- Fifteen Rotary Draw Benders thru 4" Sch. 80 Pipe (4.500" OD)
- VB300 Eaton Leonard CNC 3" Rotary Bender
- VB400 Eaton Leonard CNC 4" Rotary Bender
- Two Elva Induction Benders through 5.000" OD, ¼" Wall
- Unison CNC Rotary Draw Bender thru 2.500" OD, .065" Wall
- Four RAM Benders from 3T-30T (Vertical Press Bends)
- R-3 Roundo Roll Bender - 1½" Sch. 80 Pipe (1.900" OD)
- R-6S Roundo Roll Bender - 4" Sch. 80 Pipe (4.500" OD)
- Two Buffalo Roll Benders
- Six Cold Saws
- Seven Band Saws
- Six Tube End Forming Machines
- Three Auto Feed Band Saws
- Two Pipe Belt Copers
- Milling Pipe Coper



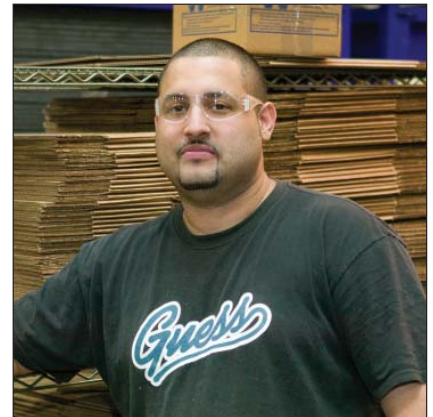
TOOL MAKING

Wagner makes over 95% of required tools in-house to meet customer requirements.

- Charmilles Wire EDM 16" x 10" x 8"
- Six Bridgeport Vertical Milling Machines
- Three CNC Bridgeport Mills with Accurite Controls
- American Radial Drill, 8" x 4'
- Giddings and Lewis Horizontal Boring Mill
- Hurco Ultimax 40T CNC Vertical Mill
- Hurco Ultimax 50T CNC Vertical Mill, 67" x 28" Bed, 52" x 30" x 24" Travel
- Surfcam Cam Software
- Victor 12" Engine Lathe
- LeBlond 16" Engine Lathe with Sliding Gap to 36"
- Two Chevalier & Okamoto 618 Style Surface Grinders
- Chevalier Auto-feed Horizontal Wet Grinder
- Heat Treat Furnace, 12" x 16" x 24"
- HAAS-SL-20 2-Axis CNC Lathe equipped with an FMB Turbo 13' Bar Feeder
- Piranha Iron Worker



Mike • Tool & Die



Jose • Shipping



QUALITY

- Brown and Sharpe Gage 2000 Coordinate Measuring Machine with a measuring capacity of 22" x 30" x 19"
- Complete Set of Digital and Mechanical Height Gauging and Layout Equipment
- Romer Stinger Ili Portable Coordinate Measuring Machine; 12' work envelope, PowerINSPECT software for layouts and DOCS tube inspection software

CUSTOM BENDING

INDUSTRIAL PRODUCTS

ARCH SHAPES

CUSTOM BENDING

INDUSTRIAL PRODUCTS

ARCH SHAPES

POLISHING

- Twelve Polishing Lathes
- 6" Tannewitz Auto-feed Belt Polisher
- Assorted Air Operated Grinders and Polishers
- Two Comecel Thru Feed Cylindrical Finishing Machines
- Longitudinal Pipe/Tube Polishing Machine
- 10' x 10' Swing Grinder Gantry
- Two 10' x 20' Swing Grinder Gantries
- Two Axis Polishing Turntable
- Long Length Circumferential Polishing Machine through 6" OD



Muszoo • Press



ENGINEERING

- Five AutoCAD Stations including AutoCAD Inventor and AutoCAD Professional
- IGES capable design assistance available



FABRICATING

- Six Tig Welders
- Three Spot Welders
- Flash Upset / Butt Welder equipped with a modern Entron Weld Controller
- Automated Cold Wire Tig Welding Lathe
- Calypso Hammerhead Twin-Head CNC Waterjet
- Welding Turntable for circumferential welding of assemblies
- Mazak Fabrigear 300 Tube Laser, 6 Axis

WATERJET CUTTING

The Wagner Companies offers *Waterjet* machining services with a *Calypto HammerHead WaterJet*.

The *HammerHead* uses a 60,000 PSI stream of water and abrasive grit to cut, shape, drill and finish any 2D design in sheet material.

- Your design executed with computer precision
- CNC controls capable of .010" accuracy
- Cuts Steel, Stainless Steel, Aluminum, Brass, Bronze, Plastics, Rubber and Exotic Metals
- Cuts materials up to 4" thick
- Minimal edge distortion
- Cost effective cutting
- No thermal damage or warping
- 10' x 5' bed

For a quote, you may send a .dxf file to oem_quoting@mailwagner.com.

ADVANTAGES

- Extremely fast setup and programming
- Minimal fixturing for most parts
- Machine virtually any 2D shape
- Almost no heat generation
- No start hole required
- Machine thick stock



Photo courtesy of Iron Creations Glendale, Wisconsin



Brad • Bending



Willie • Press



TUBE LASER CAPABILITIES

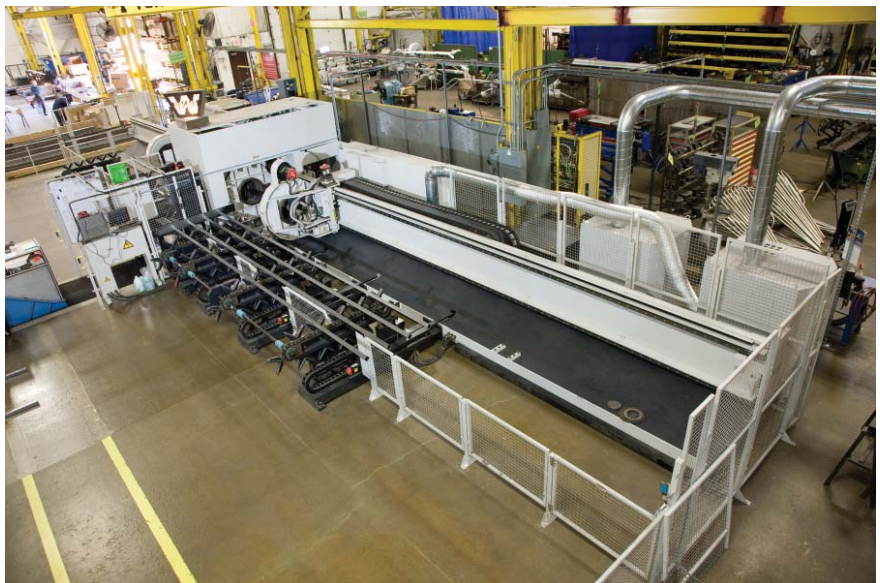
Wagner is pleased to add a *Mazak Fabrigear 300, 4000-watt Tube Laser* to its manufacturing operation. The multi-axis torch and simultaneously controlled chuck fabricate – in one operation – precise angle cuts, weld-prep bevels and advanced, complex contours such as saddle joint cuts.

With 6-axis laser cutting, the *Fabrigear 300* can cut at any desired angle for weld preparation. It can achieve high accuracy for easy fit-up of assemblies – all in a single program cycle. The *Fabrigear 300 Laser* cuts large size tube and pipe – up to 10.5" outside diameter – for round materials and 8" for square and structural shapes. Additionally, it can process I and H-beams; C-channel; angle iron; and other user-defined shapes.

With 26' of standard length capacity, the *Fabrigear 300* accommodates standard mill lengths and has a cutting capacity of 3/8" wall in stainless steel and 1/2" wall in steel.

Using 2D .dxf or 3D .igs format files, programming software is utilized to perform dynamic nesting thereby maximizing material usage and reducing scrap material.

For more information on *Wagner's Tube Laser* capabilities or other services, visit www.wagneroem.com.



CUSTOM BENDING

INDUSTRIAL PRODUCTS

ARCH SHAPES

WAGNER OEM LINE CARD

CUSTOM BENDING

STAMPING

- ¼" x 10' Amada Shear Mild Steel
- Thirty Presses from 10 Ton to 400 Ton
- Coil Capacity to ¼" x 12" Mild Steel
- Various Coil Cradles, Straighteners and Reels

SECONDARY PRODUCTS EQUIPMENT

- Eleven Drilling and Tapping Presses
- Two Multi-head Drill Presses
- Four Deburring/Tumbling/Drying Machines to 24 Cubic Feet
- Two Hot Water Dip and Rinse Machines
- Water Wash Degreaser - Hot Pressure Wash

TOOL MAKING

- Charmilles Wire EDM 16" x 10" x 8"
- Six Bridgeport Vertical Milling Machines
- Three CNC Bridgeport Mills with Accurite Controls
- American Radial Drill, 8" x 4'
- Giddings and Lewis Horizontal Boring Mill
- Hurco Ultimax 40T CNC Vertical Mill
- Hurco Ultimax 50T CNC Vertical Mill, 67" x 28" Bed, 52" x 30" x 24" Travel
- Surfcam Cam Software
- Victor 12" Engine Lathe
- LeBlond 16" Engine Lathe with Sliding Gap to 36"
- Two Chevalier & Okamoto 618 Style Surface Grinders
- Chevalier Auto-feed Horizontal Wet Grinder
- Heat Treat Furnace, 12" x 16" x 24"
- HAAS-SL-20 2-Axis CNC Lathe equipped with a FMB Turbo 13' Bar Feeder
- Piranha Iron Worker

POLISHING

- Twelve Polishing Lathes
- 6" Tannewitz Auto-feed Belt Polisher
- Assorted Air Operated Grinders and Polishers
- Two Comecel Thru Feed Cylindrical Finishing Machines
- Longitudinal Pipe/Tube Polishing Machine
- 10' x 10' Swing Grinder Gantry
- Two 10' x 20' Swing Grinder Gantries
- Two Axis Polishing Turntable
- Long Length Circumferential Polishing Machine through 6" OD

INDUSTRIAL PRODUCTS

ARCH SHAPES

BENDING

- Fifteen Rotary Draw Benders thru 4" Sch. 80 (4.500" OD) Pipe
- VB300 Eaton Leonard CNC 3" Rotary Bender
- VB400 Eaton Leonard CNC 4" Rotary Bender
- Two Elva Induction Benders through 5.000" OD ¼" Wall
- Unison CNC Rotary Draw Bender thru 2.500" OD .065" Wall
- Four RAM Benders from 3T-30T (Vertical Press Bends)
- R-3 Roundo Roll Bender - 1½" Sch. 80 Pipe (1.900" OD)
- R-6S Roundo Roll Bender - 4" Sch. 80 Pipe (4.500" OD)
- Two Buffalo Roll Benders
- Six Cold Saws
- Seven Band Saws
- Six Tube End Forming Machines
- Three Auto Feed Band Saws
- Two Pipe Belt Copers
- Milling Pipe Coper

FABRICATING

- Five Mig Welders
- Six Tig Welders
- Three Spot Welders
- Flash Upset / Butt Welder equipped with a modern Entron Weld Controller
- Automated Cold Wire Tig Welding Lathe
- Calypso Hammerhead Twin-Head CNC Waterjet
- Welding Turntable for circumferential welding of assemblies
- Mazak Fabrigeam 300 Tube Laser, 6 Axis

QUALITY

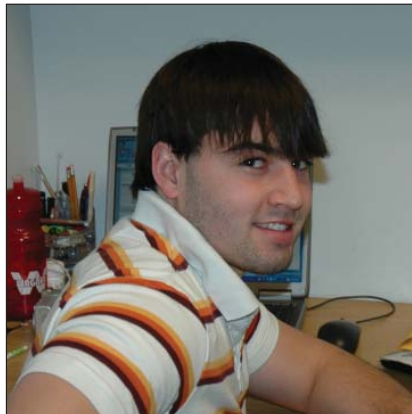
- Brown and Sharpe Gage 2000 Coordinate Measuring Machine with a measuring capacity of 22" x 30" x 19"
- Complete Set of Digital and Mechanical Height Gauging and Layout Equipment
- Romer Stinger Ili Portable Coordinate Measuring Machine; 12' work envelope, PowerINSPECT software for layouts and DOCS tube inspection software

ENGINEERING

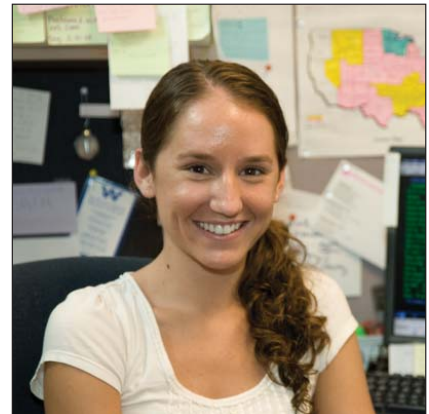
- Five AutoCAD Stations including AutoCAD Inventor and AutoCAD Professional
- IGES capable design assistance available



Nou • City Sales



Kurt • Engineering



Heather • Technical Services