

13 34 19/VAR
BuyLine 3500



V A R C O P R U D E N B U I L D I N G S

The Ultimate
Building Solution
for Building Designers





VP Buildings is a world leader in systems construction.

VP specializes in providing architects, engineers and building specifiers with cost-effective solutions to meet their project requirements for both design and function.

With five strategically located service centers and multiple production resources, VP is a market leader in the building systems industry throughout the United States and Canada.

Using advanced design and engineering tools such as VP Command, our proprietary design and estimating software, building decision makers can rely on VP and the VP Builders to provide a complete system solution – on time and within budget.

With the growing focus on the environmental impact a building has on its surroundings and occupants, both initially AND over the life cycle of the building, VP's superior design strategies optimize steel design to reduce waste and cost. Further, design and construction practices in the building systems industry notably reduce, and in some cases eliminate certain perceived negative impacts a building may have on the environment and occupants. You may have heard it referred to as **Sustainable Design**.

While VP provides part of the overall solution for a project seeking to become LEED certified, the areas where VP provides the most direct impact are:

- ▶ Recycled Content
- ▶ Recyclability / Reuse in the future
- ▶ Energy Efficiency
- ▶ Cool Roof materials
- ▶ Proximity of manufacturing facilities to job-sites

S U S T A I N A B L E D E S I G N



- 1 VP uses recycled materials and all structural elements can be recycled in the future
- 2 VP uses advanced engineering and design strategies to optimize material usage to minimize waste in construction
- 3 VP's proprietary SuperBlock system, when used with the appropriate type and amount of insulation, can deliver an in-place and hot-box tested R-value of up to 23.5.

- 4 VP's roof panels are available in Cool Roof Colors for both low slope and high slope applications
- 5 Using VP's Tuf-Dome or other passive lighting solutions, such as VP's Wallites, can enhance your building's energy efficiency and improve interior lighting
- 6 Roof slopes, gutters and downspouts promote water efficiency by directing water run-off

KXL™ Finish Wall & Roof Panel Colors

VP uses high-quality paint systems designed to provide long-term performance and protection. Each coating is formulated with thoroughly researched, tested and field-proven pretreatments, primers, resins and pigments that can meet your design and performance requirements. VP Buildings reserves the right to change color offerings without notice. Metal sample chips are available upon request from VP Buildings.

■ VP colors designated as Cool have a value for Solar Spectrum Reflectance and Emissivity. These values are listed on the back of the corresponding color sample cards along with ASTM testing data. For Architectural Panel Colors, ask for item #6020; for Wall & Roof Panel Colors, item #6021. Consult your local governing agency for individual project requirements.

KXL™ on Hot Dipped Galvanized & Galvalume®
This paint system combines ceramic pigmentation with polyvinylidene fluoride for superior, long-lasting performance. PVDF finishes are respected for their durability, resistance and color retention. Note: 70% PVDF finishes meet both Kynar 500® and Hylar 5000® specifications. Special order colors are available upon request with pricing adjustments as needed. Some restrictions apply.

KYNAR 500® is a registered trademark of Atofina Chemicals, Inc. HYLAR 5000® is a registered trademark of Solvay Solexis, Inc. Galvalume® is a registered trademark of B.I.E.C. International, Inc.

 Cool Regal White 1,2,3,4	 Ash Gray 2,4	 Cool Colonial Red 1,2,3,4	 Forest Green 3
 Egyptian White 1,2,3,4	 Jade Green 3	 Leaf Green 1,2,3,4	 Tahoe Blue 2,3,4
 Patrician Bronze 1,2,4	 Cool Sierra Tan 2,3,4	 Hemlock Green 3	 Matte Black 3,5
 Regal Blue 1,2,3,4	 Cool Dark Bronze 3	 Arctic White 2,4	 Ash Gray 2,4
 Classic Beige 2,4	 Zinc Gray 3,4	 Terra-Cotta 2,3,4	 Cool Weathered Copper 3
<p>Key to Product/Color availability 1 = SSR Roof 2 = Panel Rib Roof 3 = Snap Seal, SLR, & Soffit 4 = Panel Rib, RPR, Vee & Stran-Lok 5 = Wall Trim Only</p>			
			 Unpainted Galvalume® 1,2

Varco Pruden Buildings throughout North America and Around the World



Varco Pruden Buildings are distributed through a network of General Contractors and building systems specialists.

There are 1,000 independent, authorized Varco Pruden Builders throughout the United States and Canada.

The Varco Pruden Builder in your area can assist with structural design, material specifications and project estimates.

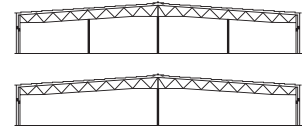
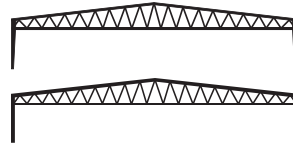
Varco Pruden also has a world-wide presence with builders and licensee affiliates around the world. For more information about Varco Pruden and our network of independent authorized builders, visit us on-line at www.vp.com.



Low-Rise Construction for a Variety of Applications



Rigid Frame



Rigid Frame

The VP Rigid Frame is the ideal system when economical, column-free interior space is desired. Clear spans up to 300' or more are available. On-Center, Off-Center Ridges and Single-Slope designs are available. All these economical clear-span structures permit unsurpassed flexibility in interior space utilization.

Rigid Truss

If your building plans call for unobstructed, column-free interior space, VP's open web Rigid Truss frame offers long clear spans along with the advantages of open web rafters. The open web design of the Rigid Truss frames holds down construction costs through optimal material use and reduction of required building heights. Ductwork, wiring, sprinkler systems and lighting can be incorporated through the trusses. Rigid Truss frames can be designed with tapered or straight columns and can have a pitched or straight bottom rafter. Roof pitch can be as low as 1/4:12.

Continuous Truss

The open web design of VP's Continuous Truss frames can hold down construction costs through optimal material use and reduction of required building heights. HVAC ducts, wiring, sprinkler systems and lighting can be incorporated "into" the trusses to maximize clearance beneath the rafter. The open web design also provides for enhanced lighting dispersal for better interior visibility. Continuous Truss frames can also be used with other framing systems including block, tilt-up, ordinary steel framing or even wood.



Continuous Truss



Lean-To



Continuous Beam

Where interior support columns are acceptable, as in vast production or storage areas, VP's Continuous Beam provides the greatest space at the lowest cost per square foot, with total flexibility in locating interior columns. Any width or eave height can be achieved. Interior column spaces can reach 100' or more.

Secondary Framing Solutions

Cee & Zee Shaped Girts & Purlins

VP's standard secondary structural members include Zee shaped purlins for roof support and Cee shaped girts for wall support. These factory-formed members come in sizes of 6^{1/2"}, 8^{1/2"} and 11^{1/2"} and a full range of gauges. These structural members are protected with G-30 galvanized coating and clear acrylic finish for protection against rusting



and weather during transport and erection. VP also offers an optional selection of factory applied primers including Patrician Bronze, Gray, or Red Oxide.

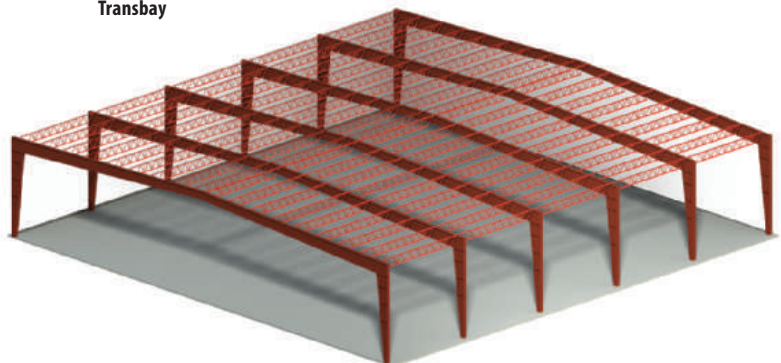


Continuous Beam

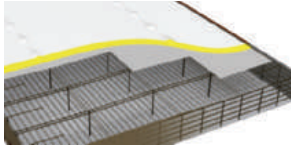


Continuous Truss with Transbay

Transbay



Through research and development, VP has expanded the capabilities of our systems to provide cost-effective solutions for all types of low-rise construction. Most recent Varco Pruden innovations include our WideBay Trussed Purlin system which allows spans up to 60' or greater and our Deck•Frame system that allows an EPDM roofing system to be used as part of a VP building.



Deck•Frame

Deck•Frame is the first metal building support solution specifically designed for membrane roof applications. Deck•Frame combines the efficiency, speed and economy of steel systems construction with the aesthetic performance of a membrane roof system.



Hybrid Construction

Each Hybrid Construction project is evaluated on an individual basis to determine the most economical and efficient solution. Hybrid projects are defined by their need for a tall structure, long span capabilities, and specific heavy design load requirements.



Hard Wall System

VP Buildings works with designers and engineers to provide cost-efficient hard wall solutions that combine the benefits of VP's framing and roofing systems with hard wall applications. VP can accommodate either load-bearing and non load-bearing wall conditions and with VP's continuous beam structural framing, interior support spacing can meet a variety of floor plans.



Deck•Frame Exterior



Deck•Frame Interior



Hybrid Framing System



WideBay Trussed Purlins



Continuous Truss with WideBay



Transbay Bar Joist System

Perfect with bay spacing in excess of 40'

VP's Transbay Bar Joist System can be used with all VP framing systems. It allows any bay spacing you need and is particularly appropriate in facilities with bay spacing in excess of 40'.

WideBay/Trussed Purlin

Less weight. Less cost.
Less Restrictions.

Now today's open-space buildings have a new construction solution for bays up to 60' wide. VP's WideBay Trussed Purlin will cover 70% of traditional bar joist applications, and the results are stronger and more attractive with 16% less weight per foot than traditional bar joists. The WideBay Trussed Purlin design can accommodate roof snow loads up to 40 pounds per square foot at a 5'



spacing for a 60' span. Adjusting the span and/or spacing can accommodate higher loads. And in spite of their brawn, WideBay purlins are better looking. VP Buildings has designed a product that does more, plus has more aesthetic appeal.

WideBay / Trussed Purlin



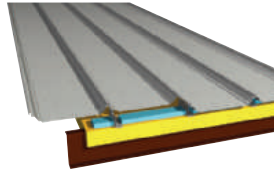


SSR

Varco Pruden's top-of-the-line SSR™ standing seam roof, with millions of square feet in place has established itself as the benchmark in roofing value. The value starts with an unmatched useful life – backed by an available 20 year weathertightness warranty. SSR is comprised of factory-formed panels which are interlocked and machine seamed in place, yielding a single unit membrane. SSR's unique design effectively accommodates thermal expansion and contraction caused by temperature changes. VP's patented SSR ridge system provides a complete seal at the apex of your building. SSR accommodates up to six inches of faced fiberglass blanket insulation for high levels of energy efficiency.



SSR



SSR

Low slope, low maintenance



FEATURES

- ▶ 24" Coverage
- ▶ Lengths up to 50'
- ▶ Available in 6 standard colors and unpainted Galvalume™
- ▶ Weather-tight seams over clip system
- ▶ Field-Seamed Weather-Resistant Joint
- ▶ Roof Slopes as low as 1/4" in 12"
- ▶ UL 90 Wind Uplift Rating Available
- ▶ U.S. Army Corps of Engineers Approved for Wind Uplift Resistance
- ▶ Dade County Building Commission Approved
- ▶ Factory Mutual Approved

The SSR system is a low-slope, clip-mounted roof that meets the most demanding performance specifications. These durable, low-maintenance panels are interlocked and mechanically field-seamed in place. This yields a single membrane allowing for quick construction and strength at a lower cost. The slotted clip allows for thermal movement. SSR's patented ridge system seams together and provides a true expansion joint. Panels are available in either 24 or 22 gauge zinc aluminum coated steel with 3"-high ribs. Available in 6 colors plus base Galvalume™.

* Energy Star listings are available for Galvalume™ finished products only.



SSR

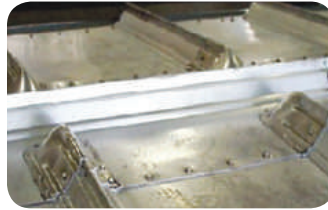


SSR



SSR

Patented Seamed Ridge for SSR



SSR Seamed Ridge

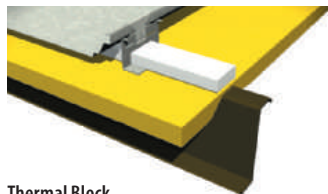
The perfect way to cap off a VP Buildings SSR roof. This unique design allows for a consistent look and efficient closure and protection at the apex of the roof.

Using a male and female ridge panel and a ridge end mastic, this assembly is easy to install.

The VP SSR Seamed Ridge is available in either standard 24 gauge or optional 22 gauge zinc aluminum coated galvanized steel. Ridge caps can be powder coated to match VP standard roof colors.

VP Buildings' patented seamer tool seams the ridge to a weathertight 360° seal.

Patented Superblock™ System with SSR

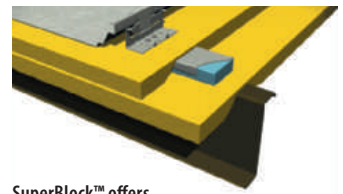


Thermal Block offers insulation values up to R-15.8.

Superblock™ for SSR

Superblock™ is an exclusive and proprietary insulation system designed specifically for VP's SSR standing seam roof and is capable of delivering an ASTM-C236 Hot Box tested, in-place R-value of 22.8 with a non-reflective facing. If using a reflective facing, the R-value can be as high as 23.5.

The unparalleled performance of the Superblock System is a direct result of the spatial relationship between the uniquely designed thermal block and fiberglass

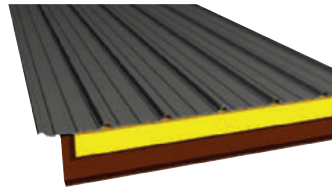
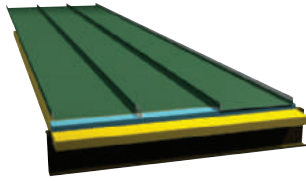
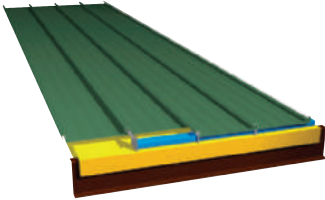


SuperBlock™ offers insulation values up to R-23.5*

insulation. Other systems require more material and more labor, without achieving the same performance.

VP's Superblock System holds down the faced blanket as soon as it is placed and the roof clip tabs maintain a precise module without constant measuring.

SuperBlock is an energy-efficient sustainable solution for your VP building.



SLR

SLR

Meets architectural specifications

FEATURES

- ▶ 16" Coverage with 2" Depth
- ▶ Lengths up to 40'
- ▶ Available in 15 colors
- ▶ Weather-tight seams over clip system
- ▶ Roof Slopes as low as 1/4" in 12"
- ▶ UL 90 Wind Uplift Rating Available
- ▶ U.S. Army Corps of Engineers Approved for Wind Uplift Resistance
- ▶ Field-Seamed Weather-Resistant Joint
- ▶ Factory Mutual Approved

This Architectural/Structural Roof System is a low-slope, concealed-fastener roof that meets most architectural performance specifications. Using factory-installed sealant, pre-caulked galvanized clips and field-seaming, this roof system provides unsurpassed performance and leak resistance. Panels are available in 22 or 24 gauge Galvalume™ steel. The thermally responsive galvanized panel clip combines a 22 gauge hook and a 16 gauge clip.

Snap Seal

High-performance

FEATURES

- ▶ 18" Coverage
- ▶ Lengths up to 41'
- ▶ 1-3/4"-High Rib
- ▶ 24 ga. standard and 22 ga. optional
- ▶ Available in 15 colors
- ▶ Weather-tight seams over clip system

The Snap Seal Architectural Roof System is a high-performance, concealed-fastener standing seam roof system that is both good-looking and durable. The system is a high-performance, weather-resistant roof by virtue of its unique snap and seal joinery system. Available in either 22 or 24 gauge Galvalume™ steel with 1-3/4"-high ribs, with thermally responsive galvanized 18 gauge panel clips.

Panel Rib

Attractive and economical

FEATURES

- ▶ 36" Coverage
- ▶ Lengths up to 41'
- ▶ Available in 16 standard colors and unpainted Galvalume™
- ▶ Color matched fasteners
- ▶ Roof Slopes as low as 1/2" in 12"
- ▶ UL 60 and UL 90 Wind Uplift Ratings Available
- ▶ Dade County Building Commission Approved

Panel Rib is an attractive, high-quality, low-maintenance roof for tight budgets. The panel is 36" wide and is attached with self-drilling, color-matched fasteners. This system offers you enhanced roof integrity and quicker installation. Sealant is applied to every metal-to-metal contact point, resulting in a weather-resistant roof. The panel has 1-1/4"-high ribs and comes in lengths up to 41'. Panels are available in either 24 or 26 gauge zinc aluminum coated steel.

* Energy Star listings are available for Galvalume™ finished products only.



Snap Seal

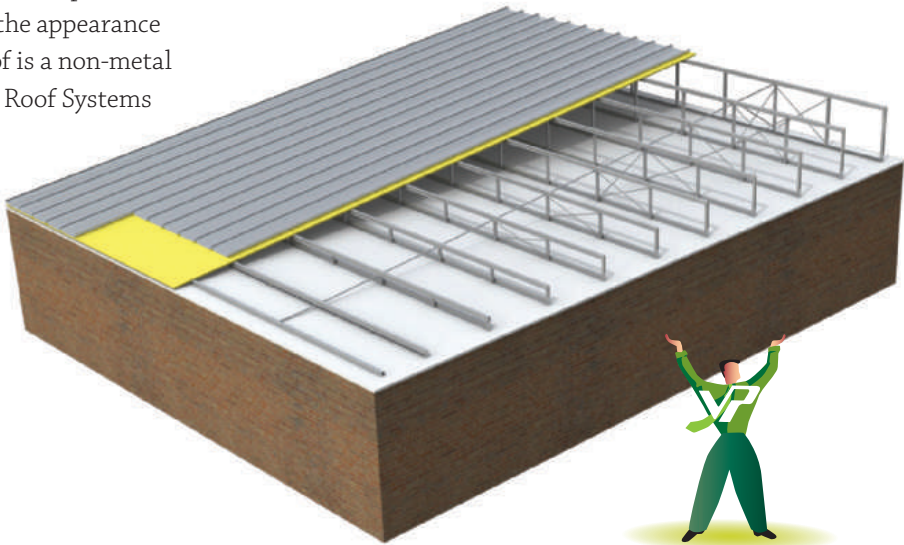


Panel Rib

Varco Pruden Retrofit and Re-roof Solutions

Whether your building is pre-engineered or conventional construction, VP Roof Systems has a solution to stop roof leaks, reduce maintenance cost and improve the appearance of your facility. Regardless if your current roof is a non-metal or a metal roof... flat or sloped, Varco Pruden Roof Systems gives you:

- ▶ A roof system designed to meet the highest industry standards for quality and performance
- ▶ A wide selection of panel options and architecturally attractive colors
- ▶ The option of adding slope to flat roofs, eliminating "ponding" and problems related to standing water
- ▶ Increased energy-efficiency with additional insulation and "cool paint" formulations
- ▶ Long-term, weather-tight protection and fewer roofing headaches





Metal Wall and Roof Systems

VP Buildings' steel wall and roof systems are designed, engineered and manufactured to give years of efficient, low-maintenance service. Available in a wide selection of attractive color choices (See page 3 for KXL color options), VP panels are warranted for up to 20 years.

VP metal panels can be insulated with most standard insulation systems to achieve a thermally efficient building envelope. Additionally, VP Buildings offers a complete line of trim and accessory packages including gutters, downspouts and opening trims, windows, doors, entrance canopies, vents and louvers.



Panel Rib

Most economical exterior wall system

FEATURES

- ▶ 36" Coverage
- ▶ Lengths up to 41'
- ▶ 1-1/4"-High Rib
- ▶ 26 and 24 ga. Galvalume™ Steel standard or 22 ga. optional
- ▶ Available with standard crimped base (see illustration below) or square cut with base trim
- ▶ Dade County Building Commission Approved

Panel Rib is our most economical wall system. In fact, this wall system is more economical than wood, concrete or masonry alternatives. Self-drilling, color-matched fasteners and a 36" panel width give you rapid, economical installation. Panel Rib comes in lengths up to 41', which can provide a continuous panel from foundation to eave. This eliminates the need for endlaps and assures you of wall integrity and weathertightness. Panels are available in 26 gauge standard and 24 or 22 gauge options.



RPR Panel

Reverse-rolled version of Panel Rib

FEATURES

- ▶ 36" Coverage
- ▶ Lengths up to 41'
- ▶ 1-1/4"-High Rib
- ▶ 26 and 24 ga. Galvalume™ Steel
- ▶ Semi-concealed Fasteners
- ▶ Supports 6" blanket or 2-1/2" insulation board

RPR panel is a reverse-rolled version of our popular Panel Rib profile. This economical wall system features self-drilling, color-matched fasteners and a 36" panel width to provide fast and easy installation. RPR Panel comes in lengths up to 41', which can allow a continuous panel from foundation to eave. No need for endlaps means better wall integrity and weathertightness. RPR can effectively utilize up to 6" of blanket insulation as well as up to 2-1/2" of rigid board insulation. Your VP builder can assist you in selecting the optimal insulation approach, considering up-front costs and long term energy savings.



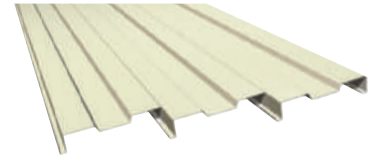
Vee Rib

Features semi-concealed fasteners

FEATURES

- ▶ 36" Coverage
- ▶ Lengths up to 39'
- ▶ 1-1/4"-High Reveal
- ▶ 26 ga. Galvalume™ Steel standard and 24 or 22 ga. optional
- ▶ Embossed Finish
- ▶ Semi-concealed Fasteners
- ▶ Dade County Building Commission Approved

The Vee Rib wall panel features semi-concealed fasteners located in the bottom of the V-groove. Its surface, embossed for aesthetics, reduces glare. Self-drilling fasteners and 36" panel width provide for economical installation. Vee Rib comes in lengths up to 39', which can provide a continuous panel from foundation to eave. This eliminates the need for endlaps and assures you of wall integrity and weathertightness. Panels have a V-groove pattern creating 1-1/4" reveals and are available in standard 26 gauge with 24 or 22 gauge options.



Stran-Lok

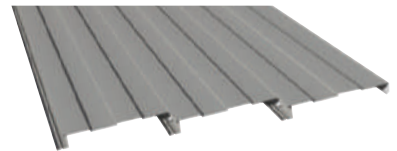
Concealed fasteners wall system

FEATURES

- ▶ 16" on-center panel can also be used as metal studs for interior walls
- ▶ Lengths up to 30'
- ▶ 1-1/4" deep x 5" wide recess
- ▶ 3" depth for added strength
- ▶ Embossed finish
- ▶ Concealed fasteners
- ▶ 24 ga. standard and 22 ga. optional

Stran-Lok panels provide 16" of coverage and are 3" deep for added strength with a 1-1/4"-deep by 5" wide recess. Panels are standard 24 gauge (or a 22 gauge option) and come in lengths up to 30', which can provide a continuous wall panel from foundation to eave. This eliminates the need for endlaps and assures wall integrity and weather tightness.

All fasteners are concealed and the steel is embossed to enhance appearance. Stran-Lok can effectively utilize a variety of insulation systems.



Tech-Four

Concealed fastener wall system

FEATURES

- ▶ 16" on-center panel
- ▶ Lengths up to 40'
- ▶ 3/8" deep x two 4" wide recesses
- ▶ 2" depth for added strength
- ▶ Embossed finish
- ▶ Concealed fasteners
- ▶ 24 ga. standard

Tech-Four panels provide 16" of coverage and are 2" deep for added strength. The panel features two 3/8"-deep 4" wide recesses for a 4"x4"x4"x4" profile. Panels are standard 24 gauge and come in lengths up to 40'. Tech Four's interlocking fastener locations give the panel a concealed profile with bold architectural lines. All fasteners are concealed and the steel is embossed to enhance appearance. Tech-Four can be easily insulated with a wide variety of insulation systems—batt, blanket, or rigid board—to greatly enhance the energy efficiency of your building.



Panel Rib



RPR Panel



Vee Rib

ThermalClad insulated wall and roof panels are ideal for food processing facilities, dry goods warehouses and other controlled-environment buildings where temperature and insulation values are critical. The lightweight yet durable panels have a superior insulating value which is maintained throughout the life of the building. All insulated cores of ThermalClad panels are made from foam-in-place blister-free, non-CFC polyurethane, which meets the requirements of most major building codes for cold storage construction. ThermalClad panels have been tested and received a Factory Mutual-Class 1 approval.



Architectural

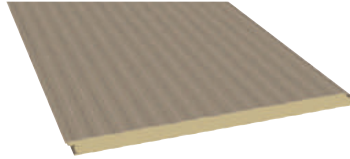
For controlled-environments

FEATURES

- ▶ Offset double tongue-and-groove side joint
- ▶ Fastener head and clip concealed in side joint
- ▶ Lengths from 8'-32'
- ▶ R-values up to R-34.9 available
- ▶ 36" Coverage
- ▶ 22 ga. Galvalume™ Steel external with 26 ga. internal standard

VP's Architectural wall panels are designed for high profile projects that require a flush exterior wall finish. This panel is 36" wide and available in four thicknesses, each with an insulated core made from foamed in-place, blister free, non-CFC polyurethane. Maximum panel length is 32'.

The exterior panels are made from extra heavy-duty 22 gauge, G-90 steel, coated with a 70% PVDF fluoropolymer finish. Interior panels are planked style 26 gauge steel, factory coated with a white polyester finish. USDA approved finishes available.



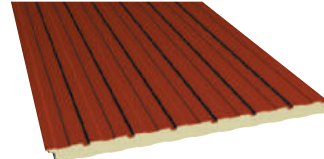
Planked

For controlled-environments

FEATURES

- ▶ Offset double tongue-and-groove side joint
- ▶ Fastener head and clip concealed in side joint
- ▶ Lengths from 8'-40'
- ▶ R-values up to R-34.9 available
- ▶ 42" Coverage
- ▶ 26 ga. Galvalume™ Steel external with 26 ga. internal standard
- ▶ 24 ga. external optional

VP's ThermalClad Planked Panels feature sturdy 26 gauge steel panels on both exterior and interior faces. The exterior panel is factory-formed with vertical lines to present an attractive and durable finished wall ideally suited for most commercial and industrial buildings. The embossed G-90 steel exterior panels are coated in 70% fluoropolymer finish to provide long term, low maintenance performance. Interior panels are factory coated with a white polyester finish. USDA approved finishes available.



Reveal

For controlled-environments

FEATURES

- ▶ Offset double tongue-and-groove side joint
- ▶ Clips and fasteners concealed in side joint
- ▶ R-values up to R-34.9 available
- ▶ Standard lengths from 8'-40'
- ▶ 42" Coverage
- ▶ 26 ga. Galvalume™ Steel external with 26 ga. internal standard
- ▶ 24 ga. external optional
- ▶ Embossed Finish

Reveal Panels feature sturdy 26 gauge steel panels on both exterior and interior faces. The exterior panel is factory-formed with bold vertical lines to present an attractive and durable finished wall, ideally suited for most commercial and industrial buildings. The embossed G-90 steel exterior panels are coated in 70% fluoropolymer finish to provide long term, low maintenance performance. Interior panels are planked design 26 gauge steel, factory coated with a white polyester finish. USDA approved finishes available.



Tuff-Wall™

Features semi-concealed fasteners

FEATURES

- ▶ The masonry look of stucco with the efficiency of an insulated metal panel.
- ▶ A durable finish that is highly resistant to impact and abrasion
- ▶ A 10-year limited warranty
- ▶ 42" panel width

VP's Tuff-Wall™ is an exceptionally attractive stucco-like insulated wall panel that provides a highly-desired look. The panel's textured surface has a hard aggregated fiber reinforced polymer coating created with the factory applied Tuff-Cote finish system. Tuff-Cote™ finish offers an extremely durable, impact and abrasion resistant coating that withstands severe weather conditions. Unlike field-applied finishes that are vulnerable to damp or cold weather, Tuff-Wall™ panels can be erected in virtually any weather condition. As an added value, Tuff-Wall™ panels can function as the finished interior walls in many applications. Maximum panel length is 40'.

Exterior metal walls are a sturdy 26 gauge steel, surrounding an insulated core of foamed in-place, blister free, non-CFC polyurethane. Interior panels are 26 gauge steel, factory coated with a white polyester finish. USDA approved finishes available.

Insulation Effectiveness

Panel Insulation Thickness	Operating Temperature	Thermal Conductivity (K-Factor)	Heat Transfer Coefficient (U-Value)	Thermal Resistance (R-Value)
2"	+40° F	.1146	.0573	17.45
2.5"	+40° F	.1146	.0459	21.81
3"	+40° F	.1146	.0382	26.18
4"	+40° F	.1146	.0287	34.9



Architectural



Planked



Reveal



Tuff-Wall™

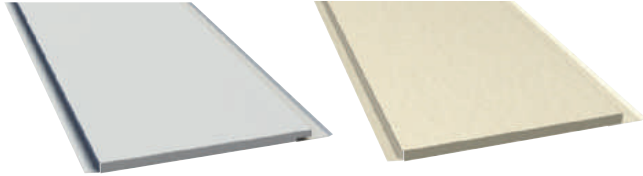


Alternative Wall & Roof Systems

Masonry, Block, Tilt-up Concrete Walls

VP framing systems permit an unlimited variety of materials for a building exterior.

Regardless of the type of project, VP systems can be combined with wood, stone, brick, block, glass, tilt-up concrete or EIFS, adding design flexibility and economy. Additional examples can be seen at vp.com. VP has manufactured thousands of projects where the architect or owner preferred an alternative to exterior metal panels. To view examples of facilities with concrete, brick, glass curtain wall, wood and stone exteriors, visit vp.com today.



ImpresaClad

A metal panel with an embossed texture

FEATURES

- ▶ 16" wide coverage
- ▶ Easy installation with concealed fasteners
- ▶ Clip-less design
- ▶ Panels to 26' length
- ▶ Color-matched accessories
- ▶ Lightweight – 2 lbs/sq. ft.
- ▶ 20 year warranty
- ▶ 6 standard colors (custom colors available)

ImpresaClad is an architectural wall panel system that combines heavy gauge galvanized steel with embossed color finishes. ImpresaClad panels are manufactured from 20-gauge galvanized G-90 steel, coated with long-life Kynar paint finishes in 6 unique colors. Kynar paint finishes are respected for their durability, resistance and color retention. ImpresaClad comes with a 20-year warranty. Installed panel width is 16". Panel lengths range from 14" to 26". The top and bottom of every panel has a 5/8" fold back. This allows the panel to nest end-to-end when installing on taller building projects.

TextureClad

A metal panel with the look of textured stucco

FEATURES

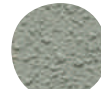
- ▶ 16" wide coverage
- ▶ Lengths from 2' to 25'
- ▶ Concealed fastener installation
- ▶ Factory applied stucco finish
- ▶ Color-matched accessories
- ▶ Lightweight – 2 lbs/sq. ft.
- ▶ Low maintenance
- ▶ Durable
- ▶ Available in 24 standard colors

TextureClad combines the rich look of textured stucco with the strength and durability of 20 gauge steel to create a lightweight, easy to install, exterior wall system. Panels are designed to meet the demands of local building ordinances where traditional metal wall panels are prohibited. Panels are coated with a specially formulated blend of fiber reinforced polymer/aggregate composition and are oven cured to ensure added durability. Finish is resistant to water, cracking, flaking, chalking and mildew. TextureClad finish is backed with a 20 year warranty. Panels can be attached directly to standard wall girts with up to 6" of batt insulation.

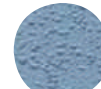
TextureClad Colors



White



Sage



Surf



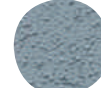
Tawny



Haze



Light Stone



Blue Gray



Wheat



Steel



Terrain



Platinum



Fog



Regal White



Doeskin



Cloud



Shrimp



Plantation



Driftwood



Tan



Surrey Beige



Emerald



Cocoa



Sand



Taupe Sand

ImpresaClad Colors



Sandstone



Linen



Gray



Ash



Khaki



Taupe



ImpresaClad



TextureClad



ImpresaClad

Interior Liner Panels



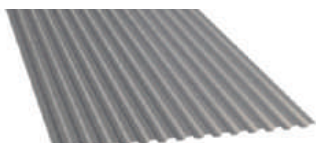
Agri-Liner

Ideal for agricultural use

FEATURES

- ▶ 36" panel width
- ▶ Lengths up to 25'
- ▶ 3/4" profile depth of panel
- ▶ 29 ga. standard
- ▶ 9" on center ribs
- ▶ Available in white or Galvalume®

Agri-Liner panel is an attractive, lightweight, low maintenance panel with nine-inch on-center ribs. With its screw-down, direct-fastening system, it is easy to install in the field.



Deck-Liner Panel

Dual purpose interior panel

FEATURES

- ▶ 36" Coverage
- ▶ Lengths up to 25'
- ▶ 28 ga. zinc coated steel
- ▶ Available in white or Galvalume®
- ▶ 7/8" profile depth of panel

This dual purpose liner panel performs well as part of a composite roof system or as an interior wall panel. Longer lengths available with considerations for shipping and erection.



VP Liner Panel

Economical interior wall system

FEATURES

- ▶ 36" Coverage
- ▶ Lengths up to 41'
- ▶ Same profile as Panel Rib
- ▶ 28 ga. zinc coated steel
- ▶ 12" on center ribs

Liner Panel is an ASTM A653 Grade 33 steel with a zinc coating. The panel is painted with a white polyester finish on one side and a gray primer coating on the reverse.

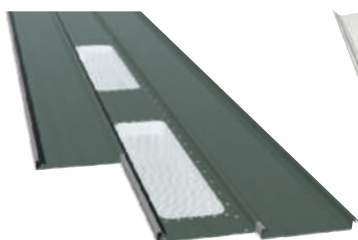


Liner Panel



Agri-Liner Panel

Accessories

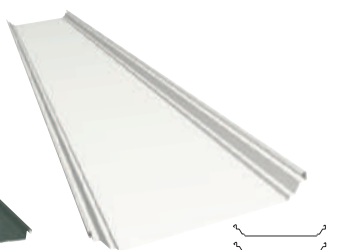


Most everything you may need to complete your building project

VP offers quality and economical accessories designed and manufactured to work with building systems.

- ▶ Roof and wall vents or louvers
- ▶ Walk doors
- ▶ Windows
- ▶ Canopies for walk doors or deck doors
- ▶ Skylights and wall-lites
- ▶ Roof curbs

Accessories come in a selection of colors and finishes to meet the overall design requirements of a building. Using accessories and components designed to work with your building will help assure years of trouble-free service. VP also provides a wide variety of special-use items to make sure your finished building is an attractive, functional, high-quality structure.



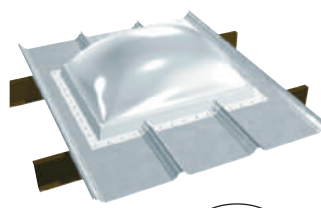
Translucent Tuf-Lite & Wallite

Allows 60% light transmission

FEATURES

- ▶ 60% light transmission
- ▶ Corrosion, chemical and weather resistant
- ▶ Class 1 fire rated; exceeds ASTM D3841: ICBO listing #5048
- ▶ Condensation pans optional on Tuf-Lite.

Choose these VP panels are the economical choice when natural diffused lighting is desired for brighter working conditions as well as savings on lighting costs. These translucent panels are made of white, fire-retardant FRP (fiber reinforced polymer) allowing for light transmission of 60%. And both Tuf-Lite and Wallite panels are extremely cost effective because they are incorporated right into the roof and wall panels of the building. Tuf-Lites are available for SSR, SLR and Panel Rib Roof. Wallites are available in Panel Rib and Vee Rib Wall profiles.



Tuf-Dome

Superior clarity

FEATURES

- ▶ One-piece curb and dome design
- ▶ Use in new construction or retrofit
- ▶ Rounded top side diverts water
- ▶ Pre-drilled holes and installation kit
- ▶ Insulated versions available.

Tuf-Dome allows a higher level of natural light transmission because of the superior clarity of its polycarbonate material. With Tuf-Dome, a VP building will have years of energy-saving natural lighting as well as trouble-free maintenance. Tuf-Dome has been tested to withstand high winds, hail, ice and rain. The product's unique one-piece design that includes the curb, makes for simplified installation. Plus, it's designed to fit the roof panel profile so there's a superior weather-tight seal.



FP-12 Soffit

Beaded or flush

FEATURES

- ▶ 12" panel width
- ▶ Lengths from 2' to 30' [panel lengths over 15' require stiffening bead(s)]
- ▶ 7/8" profile depth of panel
- ▶ 24 ga. standard and 22 ga. optional
- ▶ Available in 15 colors
- ▶ Concealed fasteners
- ▶ Choose solid steel or vented aluminum

FP-12 can be rolled in a selection of profile appearances including: Smooth face (12" flat — limited to applications less than 15'); one stiffening bead (6"/6") or two stiffening beads (4"/4"/4") FP-12 is available in standard 24 gauge or optional 22 gauge; PVDF finish and offered in 15 Architectural panel colors. FP-12 is also available in a .032 aluminum in Cool Regal White or Cool Parchment in either vented or unvented.



VP Buildings, Inc.
 3200 Players Club Circle,
 Memphis, TN 38125
 901-748-8000
 www.vp.com

©2010 BlueScope Buildings North America, Inc. All rights reserved. Varco Pruden Buildings® is a division of BlueScope Buildings North America, Inc.

Service Center Locations

Arkansas

1115 Commerce Road
 Pine Bluff, AR 71601
 870.534.6030

North Carolina

1140 West Mountain Street
 Kernersville, NC 27284
 330.996.4801

California

530 South Tegner Road
 Turlock, CA 95380
 209.667.4951

Wisconsin

273 Water Street
 Evansville, WI 53536
 608.882.5000

Missouri

2250 Lower Lake Road
 St. Joseph, MO 64504
 816.238.7550

Participating Organizations

Metal Building Manufacturers Association — Founding Member
 Metal Building Contractors & Erectors Association — Member
 US Green Building Council — Member
 Cool Roof Rating Council — Participant



Certifications

VP Buildings leads the industry in meeting or exceeding the highest standards of testing and certification.



IAS/ICC Certified



Cool Roof Rating Council



Miami-Dade County Approved



ASTM International



Energy Star®



Quasar A660 Certified



Canadian Welding Bureau



Factory Mutual



US Army Corps of Engineers



Construction Specifiers Institute



Florida Building Code Approved

For more specific information, ask for item #2099, where approvals and certifications for Dade County Florida to California Title 24 requirements, US Corps of Engineers to Factory Mutual and Underwriters Laboratory Wind Uplift approvals are identified.

