

The Ultimate
Building Solution
for Building Designers




VP Buildings is a world leader in systems construction.

Varco Pruden specializes in providing architects, engineers and building specifiers with cost-effective solutions to meet their project requirements for both design and function.

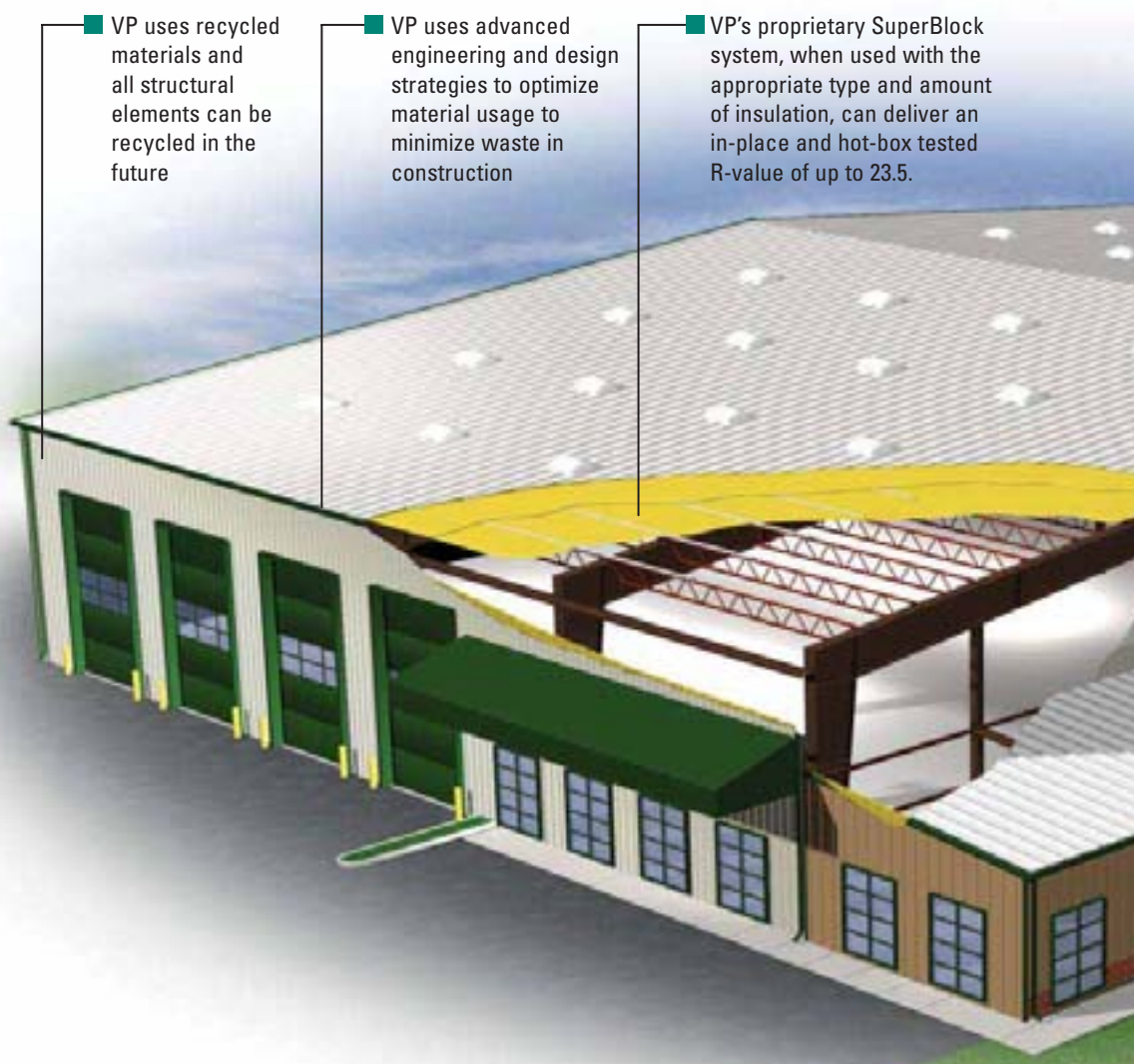
Distributed through a network of over 1,000 independent authorized VP Builders, VP Buildings are available throughout the United States and Canada.

Using advanced design and engineering tools such as VP Command, our proprietary design and estimating software, building decision makers can rely on VP and the VP Builders to provide a complete system solution – on time and within budget.

In recent years, consideration for the environmental impact a building has on its surroundings and occupants, both initially AND over the life cycle of the building has brought about a growing trend toward “**building GREEN.**” Simply put, it is a combination of design and construction practices that notably reduce, and in some cases eliminate certain perceived negative impacts a building may have on the environment and occupants. You may have heard it referred to as **Sustainable Design.**



■ VP uses recycled materials and all structural elements can be recycled in the future



■ VP uses advanced engineering and design strategies to optimize material usage to minimize waste in construction

■ VP's proprietary SuperBlock system, when used with the appropriate type and amount of insulation, can deliver an in-place and hot-box tested R-value of up to 23.5.

Today, VP Buildings is leading the transformation of the steel systems construction industry. From the traditional metal building to the exciting architecturally enhanced projects of today, VP Buildings is the answer to almost any low-rise commercial building. From retail space to office space, and from light industrial centers to a busy community center, school or place of worship, VP Buildings provides attractive, cost-efficient space. And VP Buildings lets you tailor your building to your specific needs. Inside, choose the framing system that meets your individual space requirements. Outside, choose the architectural look and material you want. VP Buildings is "The Ultimate Building Solution." To learn more, access www.vp.com.

VP's roof panels are available in Cool Roof Colors for both low slope and high slope applications

Using VP's Tuf-Dome or other passive lighting solutions, such as VP's Wallites, can enhance your building's energy efficiency and improve interior lighting

Roof slopes, gutters and downspouts promote water efficiency by directing water run-off

While VP provides part of the overall solution for a project seeking to become LEED certified, the areas where VP provides the most direct impact are:

- ▶ Recycled Content
- ▶ Recyclability / Reuse in the future
- ▶ Energy Efficiency
- ▶ Cool Roof materials
- ▶ Proximity of manufacturing facilities to job-sites



Low-Rise Construction for a Variety of Applications

VP frames are custom-designed for your project. All frames can be specified for use with non-load-bearing conventional walls – glass, brick, tilt-up, block, etc. Continuous Beam and Continuous Truss frames are recommended for use with load-bearing block or tilt-up walls.



Rigid Frame

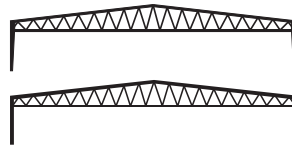


Rigid Frame

The VP Rigid Frame is the ideal system when economical, column-free interior space is desired. Clear spans up to 300' or more are available. On-Center, Off-Center Ridges and Single-Slope designs are available. All these economical clear-span structures permit unsurpassed flexibility in interior space utilization.

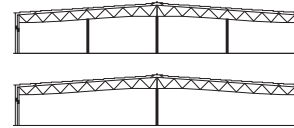


Continuous Truss



Rigid Truss

If your building plans call for unobstructed, column-free interior space, VP's open web Rigid Truss frame offers long clear spans along with the advantages of open web rafters. The open web design of the Rigid Truss frames holds down construction costs through optimal material use and reduction of required building heights. Ductwork, wiring, sprinkler systems and lighting can be incorporated through the trusses. Rigid Truss frames can be designed with tapered or straight columns and can have a pitched or straight bottom rafter. Roof pitch can be as low as 1/4:12.



Continuous Truss

The open web design of VP's Continuous Truss frames can hold down construction costs through optimal material use and reduction of required building heights. HVAC ducts, wiring, sprinkler systems and lighting can be incorporated "into" the trusses to maximize clearance beneath the rafter. The open web design also provides for enhanced lighting dispersal for better interior visibility. Continuous Truss frames can also be used with other framing systems including block, tilt-up, ordinary steel framing or even wood.



Lean-To



Continuous Beam

Where interior support columns are acceptable, as in vast production or storage areas, VP's Continuous Beam provides the greatest space at the lowest cost per square foot, with total flexibility in locating interior columns. Any width or eave height can be achieved. Interior column spaces can reach 100' or more.



Continuous Beam

Secondary Framing Solutions

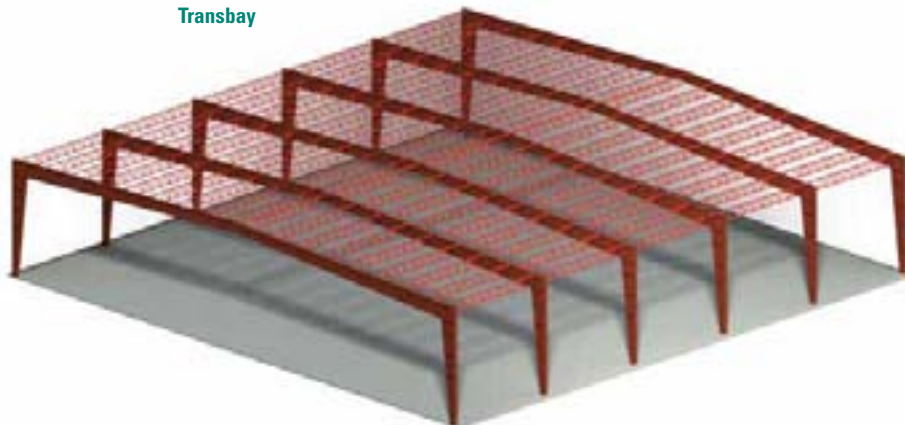
Cee & Zee Shaped Girts & Purlins

VP's standard secondary structural members include Zee shaped purlins for roof support and Cee shaped girts for wall support. These factory-formed members come in sizes of 6 1/2", 8 1/2" and 11 1/2" and a full range of gauges. These structural members are protected with G-30 galvanized

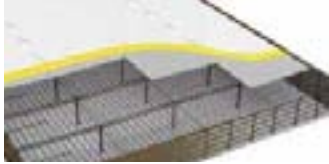


coating and clear acrylic finish for protection against rusting and weather during transport and erection. VP also offers an optional selection of factory applied primers including Patrician Bronze, Gray, Red Oxide or White.

Transbay

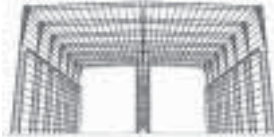


Through research and development, VP has expanded the capabilities of our systems to provide cost-effective solutions for all types of low-rise construction. Most recent Varco Pruden innovations include our WideBay Trussed Purlin system which allows spans up to 60' or greater and our Deck•Frame system that allows an EPDM roofing system to be used as part of a VP building.



Deck•Frame

Deck•Frame is the first metal building support solution specifically designed for membrane roof applications. Deck•Frame combines the efficiency, speed and economy of steel systems construction with the aesthetic performance of a membrane roof system.



Hybrid Construction

Each Hybrid Construction project is evaluated on an individual basis to determine the most economical and efficient solution. Hybrid projects are defined by their need for a tall structure, long span capabilities, and specific heavy design load requirements.



Hard Wall System

VP Buildings works with designers and engineers to provide cost-efficient Hard Wall solutions that combine the benefits of VP's framing and roofing systems with hard wall applications. VP can accommodate either load-bearing and non load-bearing wall conditions and with VP's continuous beam structural framing, interior support spacing can meet a variety of floor plans.



Deck•Frame Exterior



Deck•Frame Interior



Hybrid Framing System



WideBay Trussed Purlin



Transbay Bar Joist System

Perfect with bay spacing in excess of 40'

VP's Transbay Bar Joist System can be used with all VP framing systems. It allows any bay spacing you need and is particularly appropriate in facilities with bay spacing in excess of 40'.

WideBay Trussed Purlin

Less weight. Less cost. Less Restrictions.

Now today's open-space buildings have a new construction solution for bays up to 60' wide. VP's WideBay Trussed Purlin will cover 70% of traditional bar joist applications, and the results are stronger and more attractive with 16% less weight per foot than traditional bar joists. The WideBay Trussed Purlin design



can accommodate roof snow loads up to 40 pounds per square foot at a 5'-0" spacing for a 60'-0" span. Adjusting the span and/or spacing can accommodate higher loads. And in spite of their brawn, WideBay purlins are better looking. VP Buildings has designed a product that does more, plus has more aesthetic appeal.

Widebay





SSR



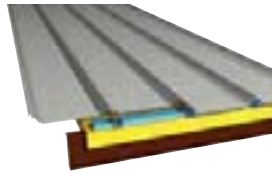
SLR



Panel Rib



SS-12



SSR



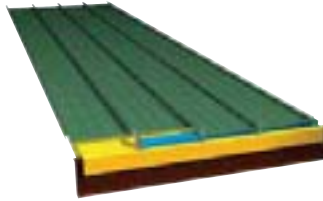
Low slope, low maintenance

FEATURES

- ▶ 24" Coverage
- ▶ Lengths up to 50'-0"
- ▶ Available in 6 standard colors and unpainted Galvalume™
- ▶ Weather-tight seams over clip system
- ▶ Field-Seamed Weather-Resistant Joint
- ▶ Roof Slopes as low as 1/4" in 12"
- ▶ UL 90 Wind Uplift Rating Available
- ▶ U.S. Army Corps of Engineers Approved for Wind Uplift Resistance
- ▶ Dade County Building Commission Approved
- ▶ Factory Mutual Approved

The SSR system is a low-slope, clip-mounted roof that meets the most demanding performance specifications. These durable, low-maintenance panels are interlocked and mechanically field-seamed in place. This yields a single membrane allowing for quick construction and strength at a lower cost. The slotted clip allows up to 3 1/4" of thermal movement. SSR's patented ridge system seams together and provides a true expansion joint. Panels are available in either 24 or 22 gauge zinc aluminum coated steel with 3"-high ribs. Available in 6 colors plus base Galvalume™.

* Energy Star listings are available for Galvalume™ finished products only.



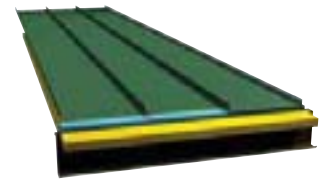
SLR

Meets architectural specifications

FEATURES

- ▶ 16" Coverage with 2" Depth
- ▶ Lengths up to 40'-0"
- ▶ Available in 15 colors
- ▶ Weather-tight seams over clip system
- ▶ Roof Slopes as low as 1/4" in 12"
- ▶ UL 90 Wind Uplift Rating Available
- ▶ U.S. Army Corps of Engineers Approved for Wind Uplift Resistance
- ▶ Field-Seamed Weather-Resistant Joint
- ▶ Factory Mutual Approved

This Architectural/Structural Roof System is a low-slope, concealed-fastener roof that meets most architectural performance specifications. Using factory-installed sealant, pre-caulked galvanized clips and field-seaming, this roof system provides unsurpassed performance and leak resistance. Panels are available in 22 or 24 gauge Galvalume™ steel. The thermally responsive galvanized panel clip combines a 22 gauge hook and a 16 gauge clip.



Snap Seal

High-performance

FEATURES

- ▶ 18" Coverage
- ▶ Lengths up to 41'
- ▶ 1-3/4"-High Rib
- ▶ 24 ga. standard and 22 ga. optional
- ▶ Available in 15 colors
- ▶ Weather-tight seams over clip system

The Snap Seal Architectural Roof System is a high-performance, concealed-fastener standing seam roof system that is both good-looking and durable. The system is a high-performance, weather-resistant roof by virtue of its unique snap and seal joinery system. Available in either 22 or 24 gauge Galvalume™ steel with 1-3/4"-high ribs, with thermally responsive galvanized 18 gauge panel clips.

Patented Seamed Ridge for SSR



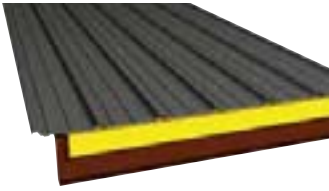
SSR Seamed Ridge

The perfect way to cap off a VP Buildings SSR roof. This unique design allows for a consistent look and efficient closure and protection at the apex of the roof.

Using a male and female ridge panel and a ridge end mastic, this assembly is easy to install.

The VP SSR Seamed Ridge is available in either standard 24 gauge or optional 22 gauge zinc aluminum coated galvanized steel. Ridge caps can be powder coated to match VP standard roof colors.

VP Buildings' patented seamer tool seams the ridge to a weathertight 360° seal.



Panel Rib

Attractive and economical

FEATURES

- ▶ 36" Coverage
- ▶ Lengths up to 41'-0"
- ▶ Available in 16 standard colors and unpainted Galvalume™
- ▶ Color matched fasteners
- ▶ Roof Slopes as low as 1/2" in 12"
- ▶ UL 60 and UL 90 Wind Uplift Ratings Available
- ▶ Dade County Building Commission Approved

Panel Rib is an attractive, high-quality, low-maintenance roof for tight budgets. The panel is 36" wide and is attached with self-drilling, color-matched fasteners. This system offers you enhanced roof integrity and quicker installation. Sealant is applied to every metal-to-metal contact point, resulting in a weather-resistant roof. The panel has 1-1/4"-high ribs and comes in lengths up to 41'. Panels are available in either 24 or 26 gauge zinc aluminum coated steel.

* Energy Star listings are available for Galvalume™ finished products only.



FP-12 Soffit

Beaded or flush

FEATURES

- ▶ 12" panel width
- ▶ Lengths from 2'-0" to 30'-0" [panel lengths over 15'-0" require stiffening bead(s)]
- ▶ 7/8" profile depth of panel
- ▶ 24 ga. standard and 22 ga. optional
- ▶ Available in 15 colors
- ▶ Concealed fasteners
- ▶ Choose solid steel or vented aluminum

FP-12 can be rolled in a selection of profile appearances including: Smooth face (12" flat — limited to applications less than 15'); one stiffening bead (6"/6") or two stiffening beads (4"/4"/4") FP-12 is available in standard 24 gauge or optional 22 gauge; PVDF finish and offered in 15 Architectural panel colors. FP-12 is also available in a .032 aluminum in Cool Regal White or Cool Parchment in either vented or unvented.

KXL™ Finish Roof Panel Colors

Key to Product/Color availability

1 = SSR Roof

2 = Panel Rib Roof

3 = Snap Seal, SLR, & Soffit

Cool Regal White ^{1,2,3}

Egyptian White ^{1,2,3}

Patrician Bronze ^{1,2}

Regal Blue ^{1,2,3}

Classic Beige ²

Ash Gray ²

Jade Green ³

Cool Sierra Tan ^{2,3}

Cool Weathered Copper ³

Cool Dark Bronze ³

Zinc Gray ³

Cool Colonial Red ^{1,2,3}

Leaf Green ^{1,2,3}

Hemlock Green ³

Arctic White ²

Terra-Cotta ^{2,3}

Forest Green ³

Tahoe Blue ^{2,3}

Matte Black ³

Zinc Gray ²

Unpainted Galvalume®^{1,2}

Patented SuperBlock™ System with SSR



Thermal Block offers insulation values up to R-15.8.

SuperBlock™ for SSR

SuperBlock™ is an exclusive and proprietary insulation system designed specifically for VP's SSR standing seam roof and is capable of delivering an ASTM-C236 Hot Box tested, in-place R-value of 22.8 with a non-reflective facing. If using a reflective facing, the R-value can be as high as 23.5.

The unparalleled performance of the SuperBlock System is a direct result of the spatial relationship between the uniquely designed



SuperBlock™ offers insulation values up to R-23.5*

thermal block and fiberglass insulation. Other systems require more material and more labor, without achieving the same performance.

VP's SuperBlock System holds down the faced blanket as soon as it is placed and the roof clip tabs maintain a precise module without constant measuring.

SuperBlock is an energy-efficient sustainable solution for your VP building.

KYNAR 500® is a registered trademark of Atofina Chemicals, Inc. HYLAR 5000® is a registered trademark of Solvay Solexis, Inc. Galvalume® is a registered trademark of B.I.E.C. International, Inc.



Panel Rib



Vee Rib



Stran-Lok and Vee Rib



Panel Rib

VP Buildings' steel wall and roof systems are designed, engineered and manufactured to give years of efficient, low-maintenance service. Available in a wide selection of attractive color choices, VP panels are warranted for up to 20 years.



Panel Rib

Most economical exterior wall system

FEATURES

- ▶ 36" Coverage
- ▶ Lengths up to 41'-0"
- ▶ 1-1/4"-High Rib
- ▶ 26 and 24 ga. Galvalume™ Steel standard and 24 or 22 ga. optional
- ▶ Available with standard crimped base or square cut with base trim
- ▶ Dade County Building Commission Approved

Panel Rib is our most economical wall system. In fact, this wall system is more economical than wood, concrete or masonry alternatives. Self-drilling, color-matched fasteners and a 36" panel width give you rapid, economical installation. Panel Rib comes in lengths up to 41', which can provide a continuous panel from foundation to eave. This eliminates the need for endlaps and assures you of wall integrity and weathertightness. Available in 13 standard KXL finish colors and a variety of custom colors. Panels are available in 26 gauge standard and 24 or 22 gauge options.



RPR Panel

Reverse-rolled version of Panel Rib

FEATURES

- ▶ 36" Coverage
- ▶ Lengths up to 41'-0"
- ▶ 1-1/4"-High Rib
- ▶ 26 and 24 ga. Galvalume™ Steel
- ▶ Semi-concealed Fasteners
- ▶ Supports 6" blanket or 2-1/2" insulation board

RPR panel is a reverse-rolled version of our popular Panel Rib profile. This economical wall system features self-drilling, color-matched fasteners and a 36" panel width to provide fast and easy installation. RPR Panel comes in lengths up to 41', which can allow a continuous panel from foundation to eave. No need for endlaps means better wall integrity and weathertightness. Available in 13 standard KXL finish colors and a variety of custom colors. RPR can effectively utilize up to 6" of blanket insulation as well as up to 2-1/2" of rigid board insulation. Your VP builder can assist you in selecting the optimal insulation approach, considering up-front costs and long term energy savings.



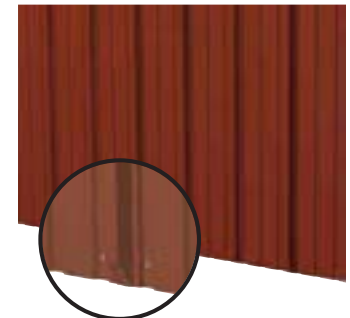
VP Liner Panel

Most economical interior wall system

FEATURES

- ▶ 36" Coverage
- ▶ Lengths up to 41'
- ▶ Same profile as Panel Rib
- ▶ 28 ga. zinc coated steel
- ▶ White Polyester Finish with Gray on reverse

LPR-36 wall panels are 28 gauge and measure 36" wide. The panel is available in lengths up to 41'. Liner Panel is an ASTM A653 Grade 33 steel with a zinc coating. The panel is painted with a white polyester finish on one side and a gray primer coating on the reverse.



Crimped Base Panel Rib

VP offers our popular Panel Rib wall panel with crimped base as an alternative to base trim.

VP metal panels can be insulated with most standard insulation systems to achieve a thermally efficient building envelope. Additionally, VP Buildings offers a complete line of trim and accessory packages including gutters, downspouts and opening trims, widows, doors, entrance canopies, vents and louvers.



Stran-Lok

Concealed fasteners wall system

FEATURES

- ▶ 16" on-center panel can also be used as metal studs for interior walls
- ▶ Lengths up to 30'-0"
- ▶ 1-1/4" deep x 5" wide recess
- ▶ 3" depth for added strength
- ▶ Embossed finish
- ▶ Concealed fasteners
- ▶ 24 ga. standard and 22 ga. optional

Stran-Lok provides an architectural look that is more economical than concrete, masonry or wood alternatives. Stran-Lok panels provide 16" of coverage and are 3" deep for added strength with a 1-1/4"-deep by 5" wide recess. Panels are standard 24 gauge (or a 22 gauge option) and come in lengths up to 30', which can provide a continuous wall panel from foundation to eave. This eliminates the need for endlaps and assures wall integrity and weather tightness.

All fasteners are concealed and the steel is embossed to enhance appearance, making Stran-Lok panels excellent for use alongside other exterior wall materials. Stran-Lok can effectively utilize a variety of blanket insulation systems. Therefore, your VP Builder can recommend the optimal insulation approach, which considers up-front cost and long-term energy savings. Stran-Lok is available in 13 standard KXL finish colors and a variety of custom colors.



Vee Rib

Features semi-concealed fasteners

FEATURES

- ▶ 36" Coverage
- ▶ Lengths up to 39'-0"
- ▶ 1-1/4"-High Reveal
- ▶ 26 and 24 ga. Galvalume™ Steel standard and 24 or 22 ga. optional
- ▶ Embossed Finish
- ▶ Semi-concealed Fasteners
- ▶ Sculptured Reveal Appearance
- ▶ Dade County Building Commission Approved

The Vee Rib wall panel features semi-concealed fasteners located in the bottom of the V-groove. Its surface, embossed for aesthetics, reduces glare. Self-drilling fasteners and 36" panel width provide for economical installation. Vee Rib comes in lengths up to 39', which can provide a continuous panel from foundation to eave. This eliminates the need for endlaps and assures you of wall integrity and weathertightness. Available in 13 standard KXL finish colors and a variety of custom colors. Panels have a V-groove pattern creating 1-1/4" reveals and are available in standard 26 gauge with 24 or 22 gauge options.

KXL™ Finish Wall Panel Colors

VP uses high-quality paint systems designed to provide long-term performance and protection. Each coating is formulated with thoroughly researched, tested and field-proven pretreatments, primers, resins and pigments that can meet your design and performance requirements. VP Buildings reserves the right to change color offerings without notice. Metal sample chips are available upon request from VP Buildings.



VP colors designated as **Cool** have a value for **Solar Spectrum Reflectance and Emissivity**. These values are listed on the back of the corresponding color sample cards along with ASTM testing data. For Architectural Panel Colors, ask for item #6020; for Wall & Roof Panel Colors, item #6021. Consult your local governing agency for individual project requirements.

KXL™ on Hot Dipped Galvanized & Galvalume® This paint system combines ceramic pigmentation with polyvinylidene fluoride for superior, long-lasting performance. PVDF finishes are respected for their durability, resistance and color retention. Note: 70% PVDF finishes meet both Kynar 500® and Hylar 5000® specifications.

Special order colors are available upon request with pricing adjustments as needed. Some restrictions apply.



Tuf-Dome



Wallite



Tuf-Lite & Wallite

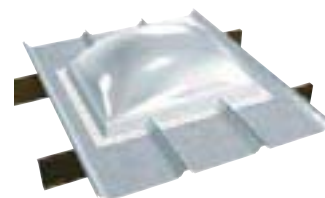
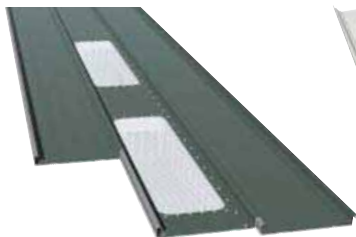


Walk Door Canopies

Masonry, Block, Tilt-up Concrete Walls

VP framing systems permit an unlimited variety of materials for a building exterior. Regardless of the type of project, VP systems can be combined with wood, stone, brick, block, glass, tilt-up concrete or EIFS, adding design flexibility and economy. Additional examples can be seen at vp.com. VP has manufactured thousands of projects where the architect or owner preferred an alternative to exterior metal panels. To view examples of facilities with concrete, brick, glass curtain wall, wood and stone exteriors, visit vp.com today.

Accessories



Most everything you may need to complete your building project

VP offers quality and economical accessories designed and manufactured to work with building systems.

- ▶ Roof and wall vents or louvres
- ▶ Walk doors
- ▶ Windows
- ▶ Canopies for walk doors or deck doors
- ▶ Skylights and wall-lites
- ▶ Roof curbs

Accessories come in a selection of colors and finishes to meet the overall design requirements of a building. Using accessories and components designed to work with your building will help assure years of trouble-free service. VP also provides a wide variety of special-use items to make sure your finished building is an attractive, functional, high-quality structure.

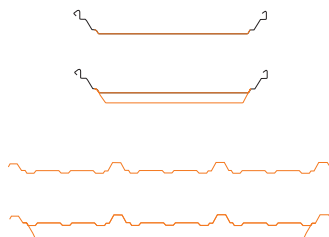
Translucent Tuf-Lite & Wallite

Allows 60% light transmission

FEATURES

- ▶ 60% light transmission
- ▶ Corrosion, chemical and weather resistant
- ▶ Class 1 fire rated; exceeds ASTM D3841: ICBO listing #5048
- ▶ Condensation pans optional on Tuf-Lite.

These VP panels are the economical choice when natural diffused lighting is desired for brighter working conditions as well as savings on lighting costs. Both translucent panels are made of white, fire-retardant FRP (fiber reinforced polymer) allowing for light transmission of 60%. And both Tuf-Lite and Wallite panels are extremely cost effective because they are incorporated right into the roof and wall panels of the building. Tuf-Lites are available in SSR and Panel Rib Roof profiles. Wallites are available in Panel Rib and Vee Rib Wall profiles.



Tuf-Dome

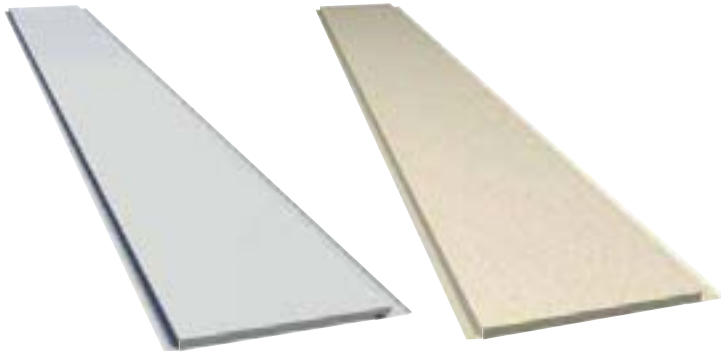
Superior clarity

FEATURES

- ▶ Raised dome for attractive architectural appearance
- ▶ Durable, high-clarity polycarbonate composition
- ▶ Convenient one-piece curb and dome design
- ▶ Use in new construction or retrofit
- ▶ Rounded top side diverts water
- ▶ Includes pre-drilled holes and installation kit
- ▶ Insulated versions available.

Tuf-Dome allows a higher level of natural light transmission because of the superior clarity of its dome's polycarbonate material. With Tuf-Dome, a VP building will have years of energy-saving natural lighting as well as trouble-free maintenance. Tuf-Dome has been tested to withstand high winds, hail, ice and rain. The product's unique one-piece design that includes the curb, makes for simplified installation. Plus, it's designed to fit the roof panel profile so there's a superior weather-tight seal. Tuf-Dome is the ideal skylight for warehouses, manufacturing facilities, retail operations or any building where optimized interior natural light is desired.





ImpressaClad

A metal panel with an embossed texture

FEATURES

- ▶ 16" wide coverage
- ▶ Easy installation with concealed fasteners
- ▶ Clip-less design
- ▶ Panels to 26' length
- ▶ Color-matched accessories
- ▶ Lightweight – 2 lbs/sq. ft.
- ▶ 20 year warranty
- ▶ 6 standard colors (custom colors available)

ImpressaClad is an architectural wall panel system that combines heavy gauge galvanized steel with embossed color finishes. ImpressaClad panels are manufactured from 20-gauge galvanized G-90 steel, coated with long-life Kynar paint finishes in 6 unique colors. Kynar paint finishes are respected for their durability, resistance and color retention. ImpressaClad comes with a 20-year warranty. Installed panel width is 16". Panel lengths range from 14" to 26'. The top and bottom of every panel has a 5/8" fold back. This allows the panel to nest end-to-end when installing on taller building projects.

TextureClad

A metal panel with the look of textured stucco

FEATURES

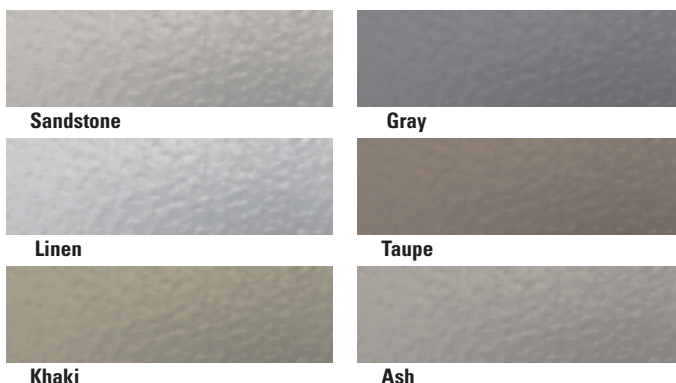
- ▶ 16" wide coverage
- ▶ Lengths from 2'0" to 25'0"
- ▶ Concealed fastener installation
- ▶ Factory applied stucco finish
- ▶ Color-matched accessories
- ▶ Lightweight – 2 lbs/sq. ft.
- ▶ Low maintenance
- ▶ Durable
- ▶ Available in 24 standard colors

TextureClad combines the rich look of textured stucco with the strength and durability of 20 gauge steel to create a lightweight, easy to install, exterior wall system. Panels are designed to meet the demands of local building ordinances where traditional metal wall panels are prohibited. Panels are coated with a specially formulated blend of fiber reinforced polymer/aggregate composition and are oven cured to ensure added durability. Finish is resistant to water, cracking, flaking, chalking and mildew. TextureClad finish is backed with a 20 year warranty. Installing over hat channels allows up to 6" of batt insulation.

TextureClad Color Options



ImpressaClad Color Options





VP Buildings

3200 Players Club Circle
Memphis, TN 38125
www.vp.com

*For More Information,
Call 901-748-8000*

Service Center Locations

Alabama

1274 Church Avenue
Rainsville, AL 35986
256.638.2264

Arkansas

1115 Commerce Road
Pine Bluff, AR 71601
870.534.6030

California

530 South Tegner Road
Turlock, CA 95380
209.667.4951

Missouri

2250 Lower Lake Road
St. Joseph, MO 64504
816.238.7550

North Carolina

1140 West Mountain Street
Kernersville, NC 27284
330.996.4801

Wisconsin

273 Water Street
Evansville, WI 53536
608.882.5000



Participating Organizations

Metal Building Manufacturers Association — Founding Member
Metal Building Contractors & Erectors Association — Member
US Green Building Council — Member
Cool Roof Rating Council — Participant



MBCEA



Certifications

VP Buildings leads the industry in meeting or exceeding the highest standards of testing and certification.



IAS/ICC Certified



Cool Roof Rating Council



Miami-Dade County Approved



ASTM International



Energy Star®



Quasar A660 Certified



Canadian Welding Bureau



Factory Mutual



US Army Corps of Engineers



Construction Specifiers Institute



Florida Building Code Approved



For more specific information, ask for item #2099, where approvals and certifications for Dade County Florida to California Title 24 requirements, US Corps of Engineers to Factory Mutual and Underwriters Laboratory Wind Uplift approvals are identified.