

HES® 1006 Series Electric Strike

- The strongest, most versatile electric strike available
- 27 faceplate options accommodate virtually every lockset
- Heavy-duty, all stainless steel construction
- Internally mounted solenoid
- Available with LBM and LBSM monitoring options
- UL 10C, 3hour fire-rated (fail secure)
- ANSI A250.13-2003 windstorm listed
- UL 1034, burglary resistant listed



HES® 5000 Series Electric Strike

- The grade 1, low profile electric strike
- A solution for openings with limited space behind the jamb
- Accommodates cylindrical locksets with ½"-5/8" latchbolts
- Dual voltage 12 or 24 VAC/VDC
- Field selectable fail secure/fail safe
- Available with LBM monitoring option
- Available with stackable lip extensions
- UL 1034, burglary resistant listed



HES® 5900 Series Electric Strike

- The concealed electric strike solution
- No cutout on frame for fast, easy installation
- Patented vertical adjustability to accommodate door sag and misalignment
- Accommodates cylindrical locks with ½"-5/8" latchbolts
- Dual voltage 12 or 24 VAC/VDC
- Field selectable fail secure/fail safe
- Available with LBM monitoring option
- ANSI/BHMA 156.31, Grade 1



HES® 9500 Series Electric Strike

- The completely surface mounted, fire-rated solution
- Requires no cuts to the jamb
- Designed for use with exit devices with up to ¾" pullman latch
- Features horizontal adjustability
- Dual voltage 12 or 24 VDC
- Field selectable fail secure/fail safe
- Available with LBM and LBSM monitoring options
- UL 10C fire-rated, 1-1/2 hour (fail secure)
- UL 1034, burglary resistant listed



For more information, contact us at:
HES, Inc.
22630 N. 17th Avenue
Phoenix, AZ 85027
Tel: (800) 626-7590
Fax: (623) 582-4641
Website: www.hesinnovations.com
Email: service@hesinnovations.com

Folger Adam® EDC 310-2-¾ Electric Strike

- An industrial grade electric strike used with cylindrical or mortise locks
- Accommodates a ¾" throw latchbolt without deadbolt
- Tamper resistant, heavy duty construction
- Horizontally adjustable keeper to allow for misalignment
- Non-handed and reversible
- Available with LCBMA monitoring option
- UL 10C 3 hour fire-rated (fail secure)
- UL 1034, burglary resistant listed



Folger Adam® EDC 310-4 Electric Strike

- The industrial grade electric strike for rim exit devices with pullman style latchbolts
- Used on a single door opening or the top of a surface vertical-rod device
- Accommodates ¾" keeper depth
- Includes an integrated shim for customization of faceplate thickness
- Features set screws for adjustment lockdown
- Available with LCBMA monitoring option
- UL 10C, 3 hour fire-rated (fail secure)
- UL 1034, burglary resistant listed



Folger Adam® EDC 712-75 Electric Strike

- The industrial grade electric strike for hollow-metal frame applications
- Accommodates locksets with ½", 5/8" or ¾" throw latchbolts
- Tamper resistant, heavy duty construction
- Fits a standard 4-7/8" cutout without modification to the face of the frame
- Horizontally adjustable keeper to allow for misalignment
- Available with LBMLCM monitoring option
- UL 10 C, 3 hour fire-rated (fail secure)
- UL 1034, burglary resistant listed



Folger Adam® EDC 742-75 Electric Strike

- An industrial grade electric strike that works with all major mortise locks (without deadbolts)
- Accommodates cylindrical locks, mortise locks and mortise exit devices with ½, 5/8" or ¾" throw latchbolts
- Tamper resistant, heavy duty construction
- Horizontally adjustable keeper to allow for misalignment
- Available with LBMLCM monitoring option
- UL 10 C, 3 hour fire-rated (fail secure)
- UL 1034, burglary resistant listed

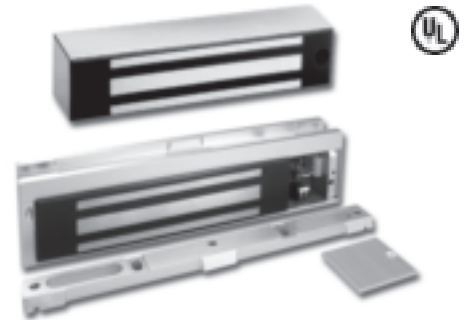


For more information, contact us at:
 HES, Inc.
 22630 N. 17th Avenue
 Phoenix, AZ 85027
 Tel: (800) 626-7590
 Fax: (623) 582-4641
 Website: www.hesinnovations.com
 Email: service@hesinnovations.com

ASSA ABLOY

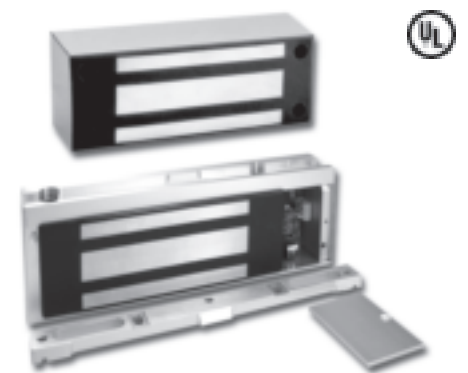
M32/M38 Series 600lb Magnalock®

- Medium security maglocks featuring auto-sensing dual voltage
- Instant release circuit - no residual magnetism
- Low current consumption produces less heat and greater product life
- Installs easily using a minimum of tools
- Available with Senstat lock status sensor
- Mounting brackets and dress covers available to configure any door
- MagnaCare Lifetime Replacement Warranty
- UL listed



M62/M68 Series 1,200lb Magnalocks

- High security maglocks featuring auto-sensing dual voltage
- Instant release circuit - no residual magnetism
- Low current consumption produces less heat and greater product life
- Installs easily using a minimum of tools
- Available with Senstat lock status sensor
- Mounting brackets and dress covers available to configure any door
- MagnaCare Lifetime Replacement Warranty
- UL listed



UnLatch® and Mortise UnLatch® Strikes

- Fits standard ANSI 4-7/8" strike cutout - no cutting on the jamb required
- Motorized, no solenoids
- Fully concealed installation
- Maintains dead-latch function at all times
- Continuous duty
- Releases under preload
- MagnaCare Lifetime Replacement Warranty
- UL listed



Touch Sense Bars and Handles

- Patented technology releases magnetic locks by sensing human touch
- Field adjustable to sense through clothing or gloves
- No moving parts reliability outperforms mechanical units
- DPST contacts release magnetic lock and signals access/alarm system
- Meets "no special tools or knowledge" code requirements
- Easy installation - not "handed"
- MagnaCare Lifetime Replacement Warranty
- UL listed



MagnaCare covers every product that Securitron manufactures.
No product registration is required.
Your product will be replaced FOREVER for any reason, including
but not limited to installation error, vandalism or act of God.

BPS Power Supplies

- 1, 4 or 8 separate output circuit breakers based on model
- Clean linear power for flawless operation with sensitive electronics
- LEDs monitor zone status (voltage, no voltage)
- Internal lead acid battery charging capability while operating DC load
- Fire alarm relay terminal connections, releases devices upon activation
- Slide switches connect or disconnect power from load
- MagnaCare Lifetime Replacement Warranty
- UL listed



DK-16 & DK-26 Digital Keypad/Entry Systems

- Red, green and yellow LEDs indicate status and operation
- Remote circuit board inside metal enclosure for increased security
- 5 AMP DPDT output for lock and alarm shunt, camera call-up, rex input
- User code and/or hard code disable feature
- Wiegand output available
- 59 user codes - expandable to 119
- True 10-digit operation
- MagnaCare Lifetime Replacement Warranty



MM15 Series 4,000lb Dual-Action Maglock

- Rotating hardened steel mandibles capture the edges of the armature
- Dual voltage (12/24) and dual current (AC/DC)
- Mounting plate provides easy and accurate installation
- Fail safe, but can be installed with a battery backup power supply
- Optional door position switch and anti-tamper switch
- Prepped for use with 1/2" conduit
- Brackets and accessories to configure any opening
- MagnaCare Lifetime Replacement Warranty



GL1 2,000lb Electromechanical Gate Lock

- Operates under preload up to 100 lbs
- Automatic dual voltage - no field adjustment required
- Fail Safe, but can be converted to Field Locked
- Manual key override (right or left hand)
- Self-aligning receiver adjusts +/- 1/2" horizontally and vertically
- Heavy wall 1/2" ID threaded steel coupling for Conduit
- Weather resistant
- MagnaCare Lifetime Replacement Warranty



For more information, contact us at:
Securiton Magnalock Corp.
550 Vista Blvd.
Sparks, NV 89434
Tel: (800) MAGLOCK
Fax: (775) 355-5625
Website: www.securitron.com
Email: info@securitron.com

ASSA ABLOY, the global leader
in door opening solutions