

PITTCO ARCHITECTURAL METALS, INC.

08 40 00/PIT
BuyLine 5239



ENTRANCE, STOREFRONT & CURTAIN WALL SYSTEMS



The Boeing Company - Learning Center - St. Louis, Missouri

Since 1936, Pittco Architectural Metals, Incorporated has been in the business of furnishing architectural aluminum storefronts and curtain wall systems on notable projects throughout the U.S. and around the world. That tradition continues... and today, Pittco is stronger than ever!

With an experienced group of dedicated professionals and state-of-the-art manufacturing facilities, Pittco continues to offer a broad line of popular storefront systems as well as extraordinary custom capabilities that are second to none.

Pittco products are engineered and manufactured to the same exacting standards that helped build the company's reputation for quality and reliability. Today designers and specifiers choosing Pittco have far greater flexibility and many more choices from an almost unlimited array of aluminum shapes, colors, and glazing systems. We proudly feature a few examples of our custom capabilities in this brochure.

The Pittco professionals proudly serve the building construction industry with one simple goal in mind – to provide value and ensure total customer satisfaction.

For more information or for assistance with your next project, call 800-992-7488 or visit our Website at www.pittcometals.com.



Johns Hopkins Cancer Research - Baltimore, Maryland

Park Tower - Chicago, Illinois



ENTRANCES

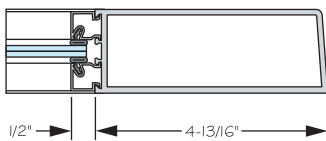
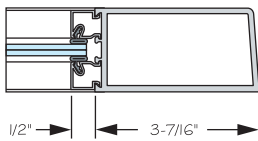
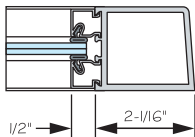
Standard Narrow,
Medium & Wide Stile



08 40 00/PIT
BuyLine 5239



Embassy of Ethiopia - Washington, D.C.



Pittco offers standard entrances with narrow, medium, and wide stiles along with a variety of other options. For strength and endurance, all Pittco entrances are manufactured to desired specifications using a mortise and tenon design and steel tension tie rod construction. The corner design allows the rails to mate into the stiles with a perfect hairline appearance. All models are available with a multitude of custom options, including horizontal and vertical muntins and custom bottom rails to meet either state code specifications or appearance requirements. All Pittco models feature standard ADA approved hardware. Custom hardware can be furnished and factory applied to ensure precision fit and alignment.

Monumental Doors

Designed for high traffic locations such as schools, universities, municipalities, stadiums, or any installation requiring a massive, heavy-duty appearance, Pittco's monumental entrances provide the ultimate in strength and integrity. Constructed from $\frac{3}{16}$ " wall by 2" thick extrusions, these entrances are manufactured by the same, time-proven method of construction as Pittco's standard doors. They are available in either medium or wide stile design, and are custom produced to the required specifications with only heavy duty, Grade I hardware

Custom Doors - U.S. Botanical Garden Conservatory - Washington, D.C.



Embassy of Brunei - Washington, D.C.



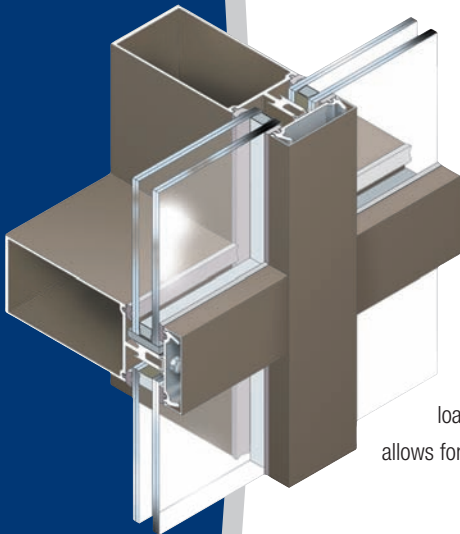
70 WALL

Engineered Curtain Wall Systems

Swedish Covenant Hospital - Chicago Illinois - Architects: O. W. P. & P.

70 Wall, a 2½" wide profile curtain wall system with varying depths, is a proven system for low and high-rise applications. 70 Wall is water-tight, rugged, and versatile, and its thermally broken design makes it an excellent choice for today's complex applications.

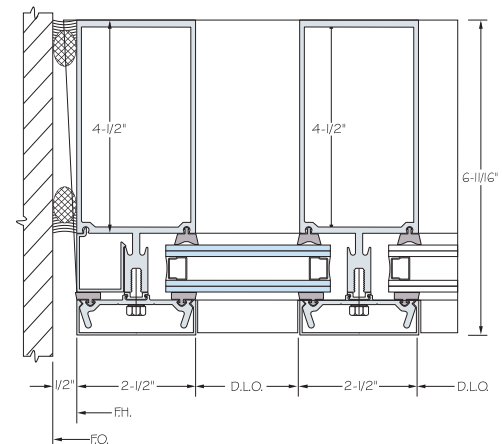
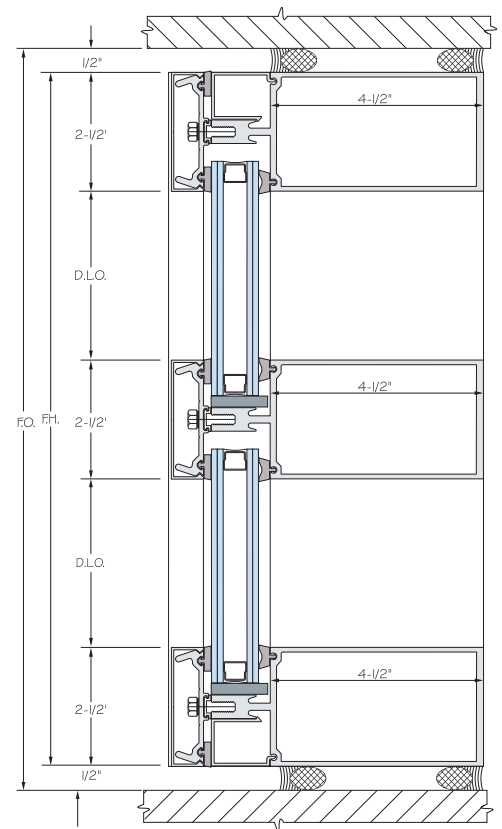
Available in overall nominal depths from 5¼" to 10⅞" when installed with 1" glazing, 70 Wall will accommodate a wide range of infills from ⅛" to 1⅞". It can also be furnished with different inside and outside finishes to meet the most demanding design criteria, and is tested to meet stringent wind load requirements. Additionally, 70 Wall easily allows for horizontal expansion and vertical stacking.



EFG 800

Two-Sided, Silicone Glazed Curtain Wall

Designed with the same strength and versatility as 70 Wall, Pittco's EFG 800 is the right choice when two-sided, silicone glazed curtain wall is required. Specifically designed for silicone glazing, EFG 800 can accommodate two-sided structural glazing, and incorporates all silicone glazing guidelines provided by AAMA. In addition, its compatibility with Pittco's 70 Wall allows for easy transition between the two systems.



Description	Test Method	Allowable	Achieved
Air	ASTM E-283	.06 cfm/sqft @ 6.24 psf	.04 cfm @ 6.24 psf
Water (Static)	ASTM E-331	No Uncontrolled Water @ 10.0 psf	Passed
Water (Dynamic)	ASTM E-501.1	No Uncontrolled Water @ 10.0 psf	Passed
Structural	ASTM E-330	No Permanent Deformation @ 50 psf	Passed
Seismic Racking	UBC 2334	No Failure	No Failure
GRF	AAMA 1503.1	N/A	64.0
U Value	AAMA 1503.1	N/A	.47 BTU/hr/ft²/°F

TMW 250, 450 & 453

Strip & Ribbon Systems

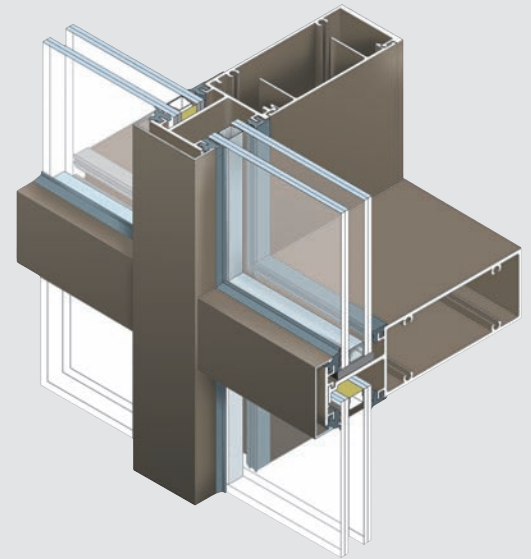
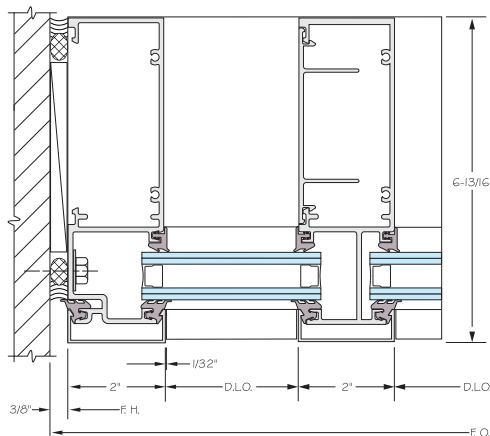
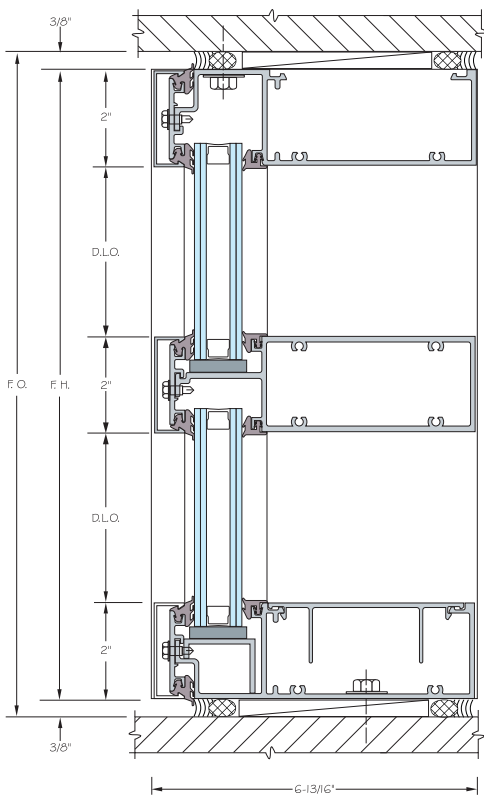


08 40 00/PIT
BuyLine 5239

TMW 450 – McCormick Place Bridge, Chicago, Illinois - Architects: A. Epstein & Sons

This family of thermally broken products features screw spline construction for simpler fabrication and erection. Each product is inherently versatile as they can all be either exterior or interior glazed. In their EFG designation either product can accommodate two-sided structural glazing. TMW 250 and 450 feature a 2" profile with 4 $\frac{3}{4}$ " or 6 $\frac{3}{4}$ " depths, while 453 is 2 $\frac{1}{2}$ " with a 6 $\frac{3}{4}$ " depth.

TMW 250 is best suited for ribbon window and storefront applications, while TMW450 and TMW453 are ideally suited for curtain wall applications where the benefit of the modified I-beam mullion design comes into play.



Description	Test Method	Allowable	Achieved
Air	ASTM E-283	.06 cfm/sqft @ 6.24 psf	.02 cfm @ psf
Water (Static)	ASTM E-331	No Uncontrolled Water @ 6.24 psf	Passed
Water (Dynamic)	ASTM E-501.1	No Uncontrolled Water @ 6.24 psf	Passed
Structural	ASTM E-330	No Permanent Deformation @ 30 psf	Passed
CRF	AAMA 1503.1	N/A	58.0
U Value	AAMA 1503.1	N/A	.59 BTU/hr/ft ² /°F

FLUSHLOK II

Horizontal Strip Window/Storefront System



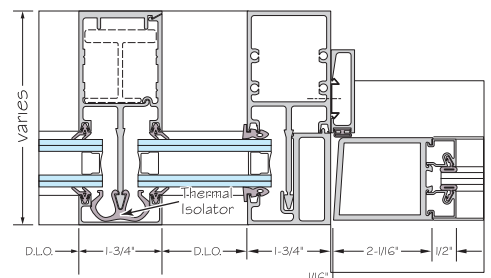
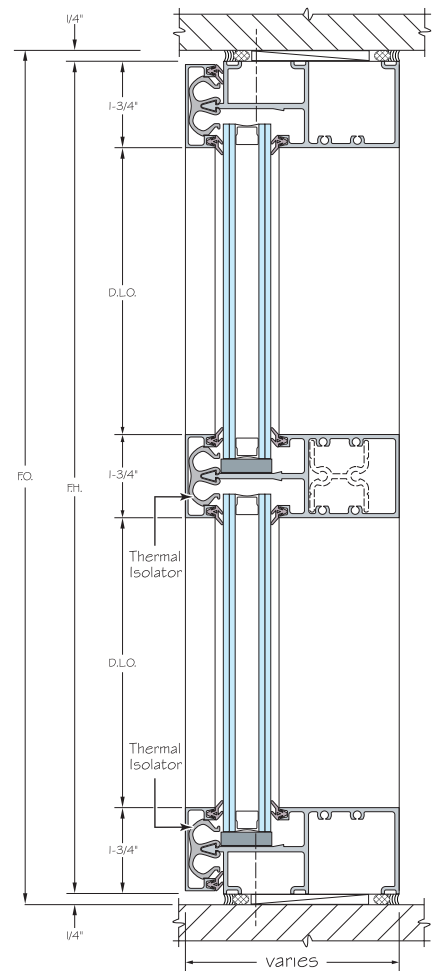
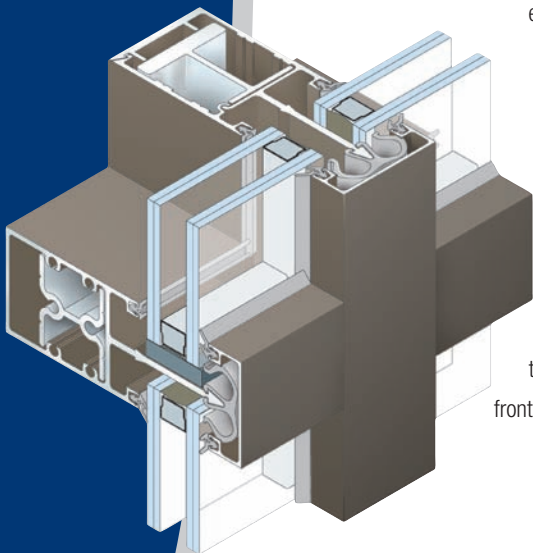
Columbus Center - Baltimore, Maryland

Flushlok II, a front-set, thermally broken, single-span slim line storefront system, is specifically designed for installation with insulated glass, but may be adapted for installation with other infills. Its very efficient thermal qualities are achieved through the use of a Celcon® clip that separates the face cap from the back member.

Flushlok II is available in two standard face cap depths and two back member depths for structural integrity (dependent upon windload conditions) to result in overall system depths of from 4½" to 6" in ½" increments. All framing members are square cut, which, when combined with screw spline construction, allows for ease of fabrication and installation in either unitized or modular mode. Also, shear block construction can be specified in order to obtain greater flexibility.

The Celcon® clip thermal separation between the face cap and back member allows for the use of different colors for the face and back members, thus adding to the versatility of this economical, thermal, storefront system.

The Celcon® clip thermal separation between the face cap and back member allows for the use of different colors for the face and back members, thus adding to the versatility of this economical, thermal, storefront system.



Description	Test Method	Allowable	Achieved
Air	ASTM E-283	.06 cfm/sqft @ 6.24 psf	.04 cfm @ 6.24 psf
Water (Static)	ASTM E-331	No Uncontrolled Water @ 10.0 psf	Passed
Water (Dynamic)	ASTM E-501.1	No Uncontrolled Water @ 10.0 psf	Passed
Structural	ASTM E-330	No Permanent Deformation @ 30 psf	Passed
CRF	AAMA 1503.1	N/A	57.0
U Value	AAMA 1503.1	N/A	.59 BTU/hr/ft²/°F

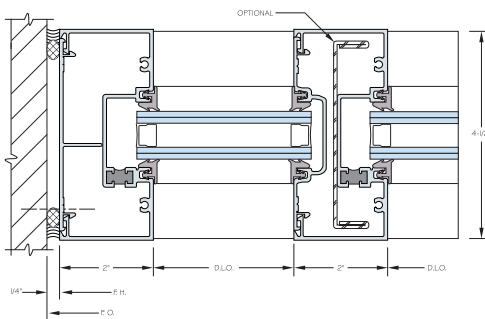
TMS 114T

Single Span Flush Glazed Storefront System

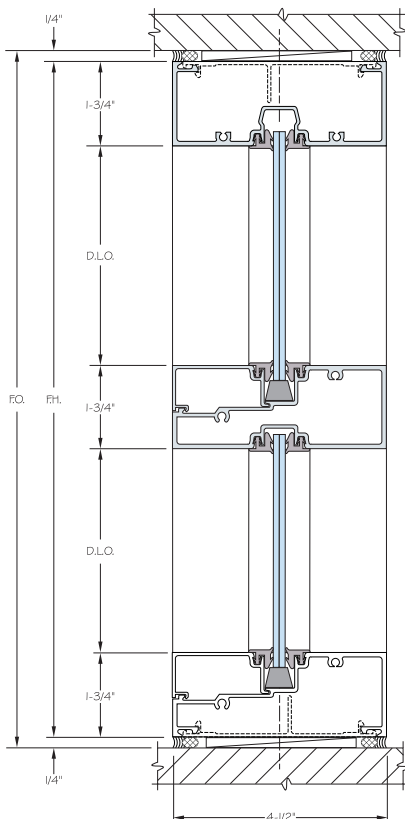


08 40 00/PIT
BuyLine 5239

K & M Printing - Schaumburg, Illinois



Pitco's TMS 114T is a 2" x 4 1/2" thermally broken, flush glaze system for 1" glazing, and is available for center set or front set applications. The thermally broken polyurethane isolator system allows for higher obtainable spans when used with standard steel stiffeners. The standard screw spline design allows modular assembly and easy installation, and the anti-fallout, wedge gasket with a non-stretch cord aids installation. The system is also available in a non-thermal design known as TMS 114.

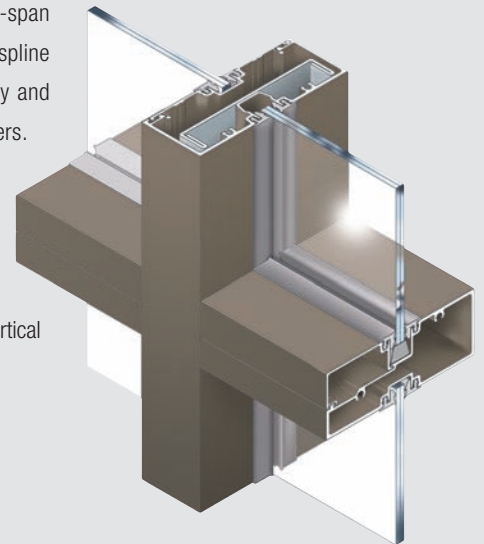


EMS 114

Single Span Storefront Systems

EMS 114, a 1 3/4" x 4 1/2" center set, single-span system for 1/4" glazing, featuring screw spline construction for fast, labor saving assembly and installation throughout the major members. The system is also offered with shear blocks for door-frame construction and special requirements.

As an option, steel can be added to the vertical member for higher obtainable spans.



Description	Test Method	Allowable	Achieved
Air	ASTM E-283	.06 cfm/sqft @ 6.24 psf	.02 cfm @ 6.24 psf
Water (Static)	ASTM E-331	No Uncontrolled Water @ 6.24 psf	Passed
Water (Dynamic)	ASTM E-501.1	No Uncontrolled Water @ 6.24 psf	Passed
Structural	ASTM E-330	No Permanent Deformation @ 30 psf	Passed
CRF	AAMA 1503.1	N/A	58.0
U Value	AAMA 1503.1	N/A	.59 BTU/hr/ft ² /°F



The Boeing Company - Learning Center - St. Louis, Missouri

Pittco Manufacturing Facility



Pittco's modern manufacturing facility includes state-of-the-art fabrication equipment. This equipment allows the company to produce defect-free components for its top-of-the-line product offering.



1530 Landmeier Road
Elk Grove Village, IL 60007
800-992-7488
fax 847-593-9946

To assure any specifier has access to the most current Pittco information, visit us at www.pittcometals.com. You'll find the latest information on products, geographical contact information, system designs, specifications and details. You can even order product literature and technical data, as well as view a gallery of many of our problem-solving projects.