

Plastic Lockers
Traditional &
Traditional Plus Collections





TRADITIONAL PLASTIC LOCKERS

Plastic Lockers are ideal for high-humidity applications, as these virtually maintenance-free lockers will never rust, rot, corrode or fade.

These lockers are available in multiple configurations and are backed by a fifteen-year warranty.

STANDARD FEATURES

- 1/2" face, 9 colors, textured finish
- 3/8" 1 pc. body, natural color, textured finish
- 3/8" tops, bottoms and shelves, natural color, tex. finish
- Black continuous powder coat hinge
- Rabbetted joinery with SS fasteners
- Black recessed vertical acting handle for safety and security w/ padlock hasp, accepts built in locks
- Self latching door with multi-point engagement
- 15 year warranty
- Slotted ventilation standard
- Fully assembled single unit construction
- Slope tops, finished (colored) end panels and fillers available

PART 1: GENERAL

1.01 Work Included

- A. The lockers shall be manufactured from high impact high-density polyethylene (HDPE) by ASI Storage Solutions, Eastanollee, GA.
- B. Furnish all labor and materials for completion of work in this section as shown in the approved drawings and specified herein.

PART 2: PRODUCTS

2.01 Material - Plastic lockers shall be manufactured by ASI Storage Solutions. These specifications shall be regarded as minimum; lockers constructed of other materials, or material with a dissimilar core and not solid plastic, will not be acceptable.

- A. All Doors, Door Frames, Shelves, Sides, Back, Top, and Bottom components shall be made of HDPE material that is water resistant and non-absorbing. Doors only 1/2", all others 3/8".
- B. Latches shall be securely attached to the door, continuous in design and be capable of accepting various locking mechanisms.
- C. Hinges shall be continuous full length, black and shall be securely attached.
- D. Hooks: Zinc plated forged steel, ball ends.
- E. Number Plates at quantity of one per opening will be supplied in polished aluminum with black numerals 1/2" high.
- F. Bases shall be fabricated from HDPE Polymer to form components with 1" nominal thickness.
- G. Finish shall be a commercial grade texture on all flat surfaces.
- H. Color: Color match exterior, white interior. Actual color shall be chosen from manufacturers list of standard colors.

2.02 Fabrication

- A. Locker units shall be manufactured for assembly of single unit construction.
- B. Locker components to be square, rigid, and free of scratches.
- C. Locker box enclosure shall be assembled by means of machined joints, pins and tamper resistant mechanical fasteners to discourage non-factory disassembly.
- D. Locker door frame shall be CNC machined from a single piece of solid HDPE material for maximum rigidity and stiffness.
- E. Locker doors shall be machined from solid HDPE sheets. Doors will contain CNC machined ventilation slots.
- F. Door Handle shall be solidly mounted to internal latch mechanism.

2.03 Recycling - Recycling of all available and recaptured pre-consumer HDPE will occur. All unused offal will be recaptured and recycled.

PART 3: EXECUTION

3.01 Installation

- A. Install lockers at the location(s) shown in accordance with the manufacturer's instructions for plumb, level, rigid, and flush installations.
- B. Attach number plates after lockers are installed.

PART 4: WARRANTY

4.01 Locker Warranty - Locker manufacturer shall warranty the lockers for a period of 15 years against delamination or breakage of any of the plastic components under normal use. If the material is found defective during that period, the material shall be replaced free of charge. No credits or allowances shall be issued for any labor or expenses relating to the replacement.

PART 5: ADA

5.01 Compliance - Handicap lockers shall be single tier or the lower opening of a double tier locker. Locker bottom shall be a minimum of 15" off the floor, or an extra shelf placed 15" off the floor. Single tier lockers shall have a shelf 48" off the floor. Doors assigned for handicapped use shall have an appropriate symbol sign. Lockers shall be supplied with an ADA compliant single touch latch.

ASI Storage Solutions reserves the right to change/modify specifications at any time.



TRADITIONAL PLUS **PLASTIC LOCKERS**

With the same standard features as the Traditional line, the Traditional Plus Collection is intended for more rugged applications. Plastic Lockers are ideal for high-humidity moisture applications, as these

virtually maintenance-free lockers will never rust, rot, corrode or fade. These lockers are available in multiple configurations and are backed by a fifteen-year warranty.

STANDARD FEATURES

- 1/2" construction throughout in 9 colors, textured finish - color throughout
- Black continuous powder coat hinge
- Rabbetted joinery with SS fasteners
- Black recessed vertical acting handle for safety and security w/ padlock hasp, accepts built in locks
- Self latching door with multi-point engagement
- 15 year warranty
- Slotted ventilation standard
- Fully assembled single unit construction
- Slope tops, finished (colored) end panels and fillers available

PART 1: GENERAL

1.01 Work Included

- A. The lockers shall be manufactured from high impact high-density polyethylene (HDPE) by ASI Storage Solutions, Eastanollee, GA.
- B. Furnish all labor and materials for completion of work in this section as shown in the approved drawings and specified herein.

PART 2: PRODUCTS

2.01 Material - Plastic lockers shall be manufactured by ASI Storage Solutions. These specifications shall be regarded as minimum; lockers constructed of other materials, or material with a dissimilar core and not solid plastic, will not be acceptable.

- A. All Doors, Door Frames, Shelves, Sides, Back, Top, and Bottom components shall be made of HDPE material that is water resistant and non-absorbing. All components shall be 1/2" nominal thickness and homogeneous in color.
- B. Latches shall be securely attached to the door, continuous in design and be capable of accepting various locking mechanisms.
- C. Hinges shall be continuous full length, black and shall be securely attached.
- D. Hooks: Zinc plated forged steel, ball ends.
- E. Number Plates at quantity of one per opening will be supplied in polished aluminum with black numerals 1/2" high.
- F. Bases shall be fabricated from HDPE Polymer to form components with 1" nominal thickness.
- G. Finish shall be a commercial grade texture on all flat surfaces.
- H. Color: Color match is throughout. Actual color shall be chosen from manufacturers list of standard colors.

2.02 Fabrication

- A. Locker units shall be manufactured for assembly of single unit construction.
- B. Locker components to be square, rigid, and free of scratches.
- C. Locker box enclosure shall be assembled by means of machined joints, pins and tamper resistant mechanical fasteners to discourage non-factory disassembly.
- D. Locker door frame shall be CNC machined from a single piece of solid HDPE material for maximum rigidity and stiffness.
- E. Locker doors shall be machined from solid HDPE sheets. Doors will contain CNC machined ventilation slots.
- F. Door Handle shall be solidly mounted to internal latch mechanism.

2.03 Recycling - Recycling of all available and recaptured pre-consumer HDPE will occur. All unused offal will be recaptured and recycled.

PART 3: EXECUTION

3.01 Installation

- A. Install lockers at the location(s) shown in accordance with the manufacturer's instructions for plumb, level, rigid, and flush installations.
- B. Attach number plates after lockers are installed.

PART 4: WARRANTY

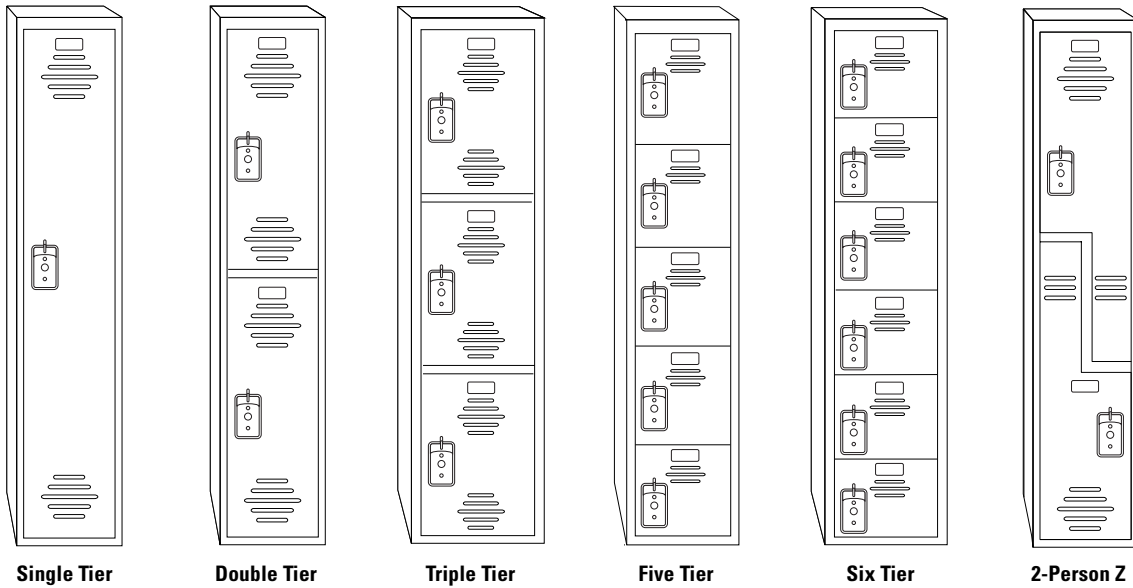
4.01 Locker Warranty - Locker manufacturer shall warranty the lockers for a period of 15 years against delamination or breakage of any of the plastic components under normal use. If the material is found defective during that period, the material shall be replaced free of charge. No credits or allowances shall be issued for any labor or expenses relating to the replacement.

PART 5: ADA

5.01 Compliancy - Handicap lockers shall be single tier or the lower opening of a double tier locker. Locker bottom shall be a minimum of 15" off the floor, or an extra shelf placed 15" off the floor. Single tier lockers shall have a shelf 48" off the floor. Doors assigned for handicapped use shall have an appropriate symbol sign. Lockers shall be supplied with an ADA compliant single touch latch.

ASI Storage Solutions reserves the right to change/modify specifications at any time.

CHOICE OF STYLES

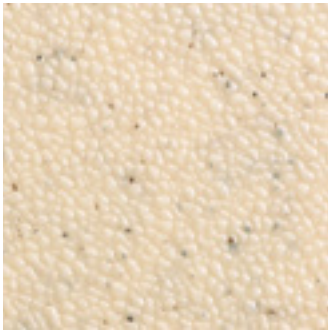


LOCKER SIZES

LOCKER HEIGHTS										
SIZES (WIDTH X LENGTH)	SINGLE-TIER		DOUBLE-TIER		TRIPLE-TIER		FIVE-TIER	SIX-TIER	2-PERSON Z	
12" x 12"	60"	72"	60"	72"	60"	72"	60"	72"	60"	72"
12" x 15"	60"	72"	60"	72"	60"	72"	60"	72"	60"	72"
12" x 18"	60"	72"	60"	72"	60"	72"	60"	72"	60"	72"
15" x 15"	60"	72"	60"	72"	60"	72"	60"	72"	60"	72"
15" x 18"	60"	72"	60"	72"	60"	72"	60"	72"	60"	72"
18" x 18"	60"	72"	60"	72"	60"	72"	60"	72"	60"	72"

All single-tier and the lower opening of the double-tier lockers can be ADA-Compliant.

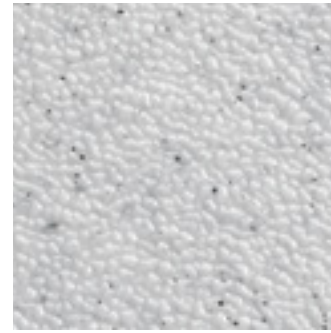
9 DESIGNER COLORS



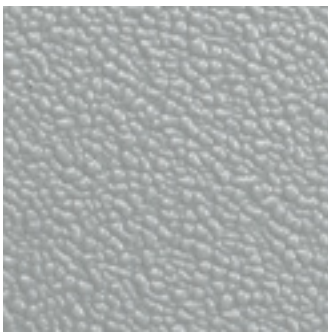
Ivory Essence Speckle #9500



Cream #9235



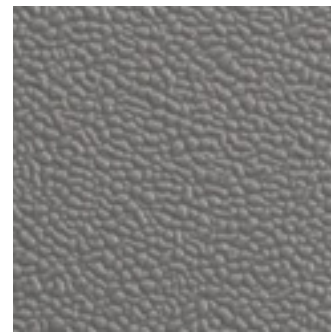
Folkstone Grey #9400



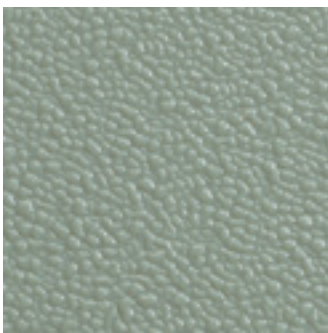
Grey #9200



Tan #9202



Charcoal #9237



Moss #9233



Blueberry #9509



Burgundy #9211

ONLY ASI CAN SUPPLY EVERYTHING FOR YOUR WASHROOM

And only ASI Group offers the industry's most cutting-edge hand dryers, soap dispensers, baby changers, paper towel dispensers, partitions, lockers and much, much more.



Distributed by:



© 2014 ASI Storage Solutions, an ASI Group Company

ASI Storage Solutions
2171 Liberty Hill Road, Eastanollee, GA 30538
Tel: 706.827.2720 Fax: 706.827.2710
E-mail: info@asistorage.com
Web: asistorage.com

ASI98121014