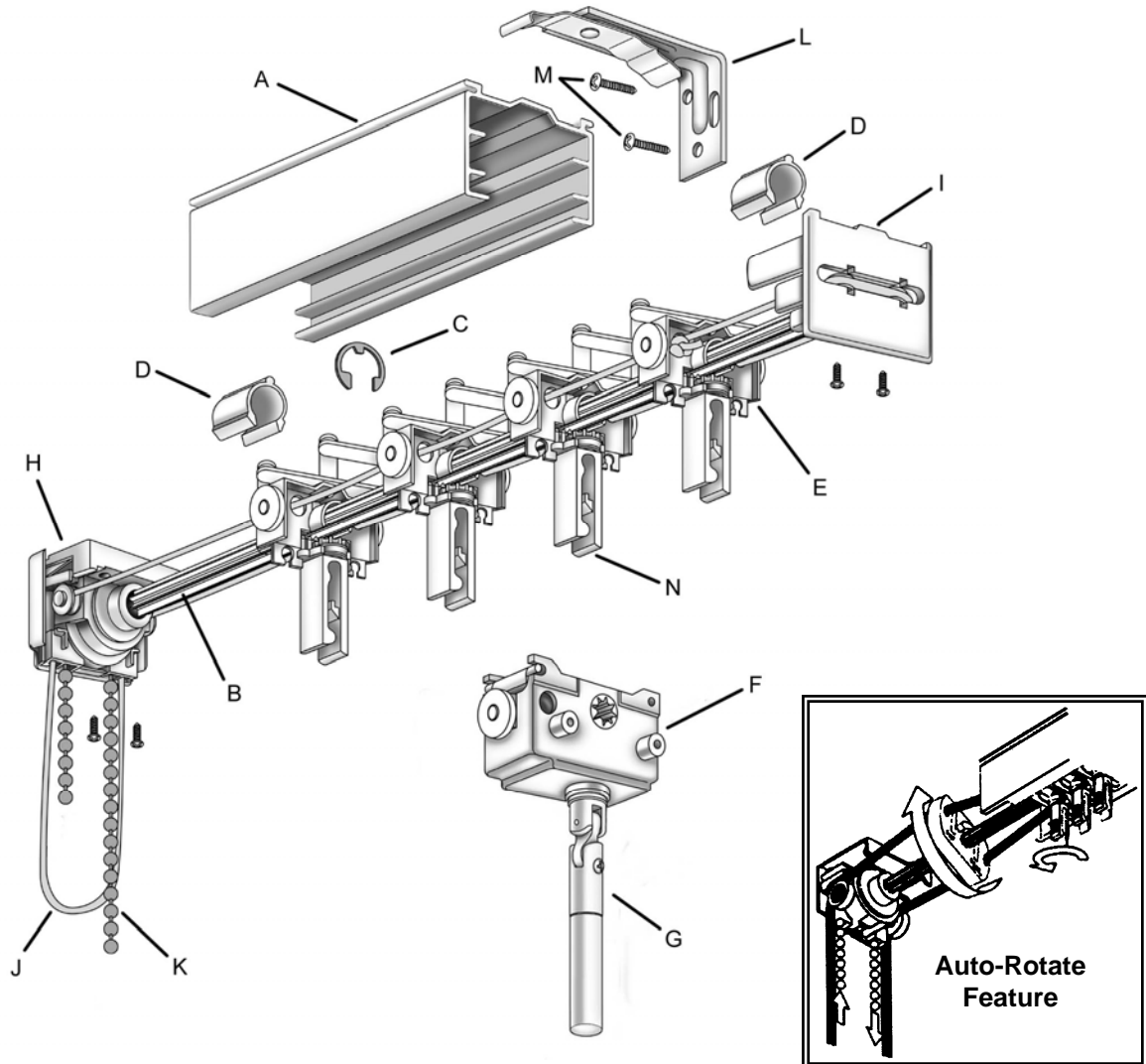


Product Cut Sheet: M-5500 Vertical Blind Headrail System



Parts:

- | | |
|------------------------------------|--|
| A) Headrail – Aluminum | I) Idle End |
| B) Pinion Rod (Tilt Rod) – 8 Prong | J) Nylon Cord |
| C) Stop C Clip | K) Chain #10 N.P.S. (Nickel Plated Steel) |
| D) Spacer Clip | L) Installation Bracket with Ceiling Clamp |
| E) Carrier | M) Installation Screws |
| F) Wand Control | N) Replaceable Carrier Stem |
| G) Wand | |
| H) End Control | |

System Features:

- 8-Prong Pinion Strap System
- Self-Aligning Wheeled Carrier with Replaceable Stem
- Self-Lubricated Acetal parts
- Vanes Automatically Space Equally
- Auto-Rotate: Automatically rotates louvers to an open position when the traversing cord is pulled

Headrail Options:

- M-5500 Headrail = Cord & Chain Control with Auto-Rotate Feature

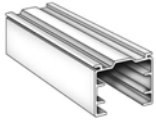
Mariak Contract
575 W. Manville Street
Rancho Dominguez, CA 90220

Ph: (800) 562-7425
Fx: (800) 459-6999
www.mariak.com

Mariak
Contract

Product Cut Sheet: M-5500 Vertical Blind Headrail System

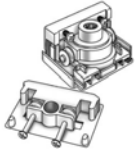
Headrail:



- Available in White or Ivory baked enamel or clear Anodized
- Aluminum Alloy – 2" x 1 1/4" high
- Minimum wall thickness – 0.035"

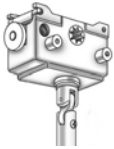
Controls:

Cord & Chain Control Option



- Reduction control is made of acetal plastic which allows for precise control of light using #10 N.P.S. chain
- End controls are covered to enclose sprockets and the rotating tilt rod ends
- Traverse cord roller allows extended cord life and ease of operation

Wand Control Option (Safety Track)



- Equipped with a left and right idler end which holds the tilt rod and covers both ends of the headrail
- Control made of acetal plastic with a reduction gear
- Firmly encircles the tilt rod which provides smooth rotation

Carriers:

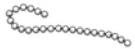


- Molded in acetal plastic
- Plastic scissor strap system provides equal louver spacing
- A self-aligning carrier feature allows uniform rotation
- Two independent self-lubricating wheels for easy traversing
- Rotation of the louver is controlled by the precision-molded rack and pinion gear
- Replaceable louver hanger system allows for fast and efficient repair without disassembling the headrail



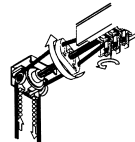
Rotation:

Cord & Chain Control Option



- #10 N.P.S. (Nickel Plated Steel) chain
- 8-prong tilt rod is made of extruded aluminum
- Tilt rod passes through all the louver carriers, providing rotation to each louver by means of a precision-molded rack and pinion gear system

Auto-Rotate Feature



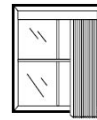
- Automatically rotates louvers to an open position when the traversing cord is pulled

Stacking:

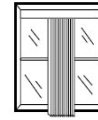
- One Way Draw (Left or Right)
- Split-Draw (Center Opening)
- Center Stack (Side Opening)
- Blind traverses by means of a synthetic traverse cord or wand control pull



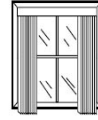
Left Stack



Right Stack



Center Stack



Center Split

Louver Spacing:

- Plastic scissor system provides equal louver spacing for 3 1/2" louvers
- Normal louver spacing has a 3/8" overlap
- Available in 3 1/2" louvers

Mounting Hardware:

- A variety of installation clips and brackets are available



Size Recommendations:

- Maximum Width – 192"
- Maximum Drop – 144"