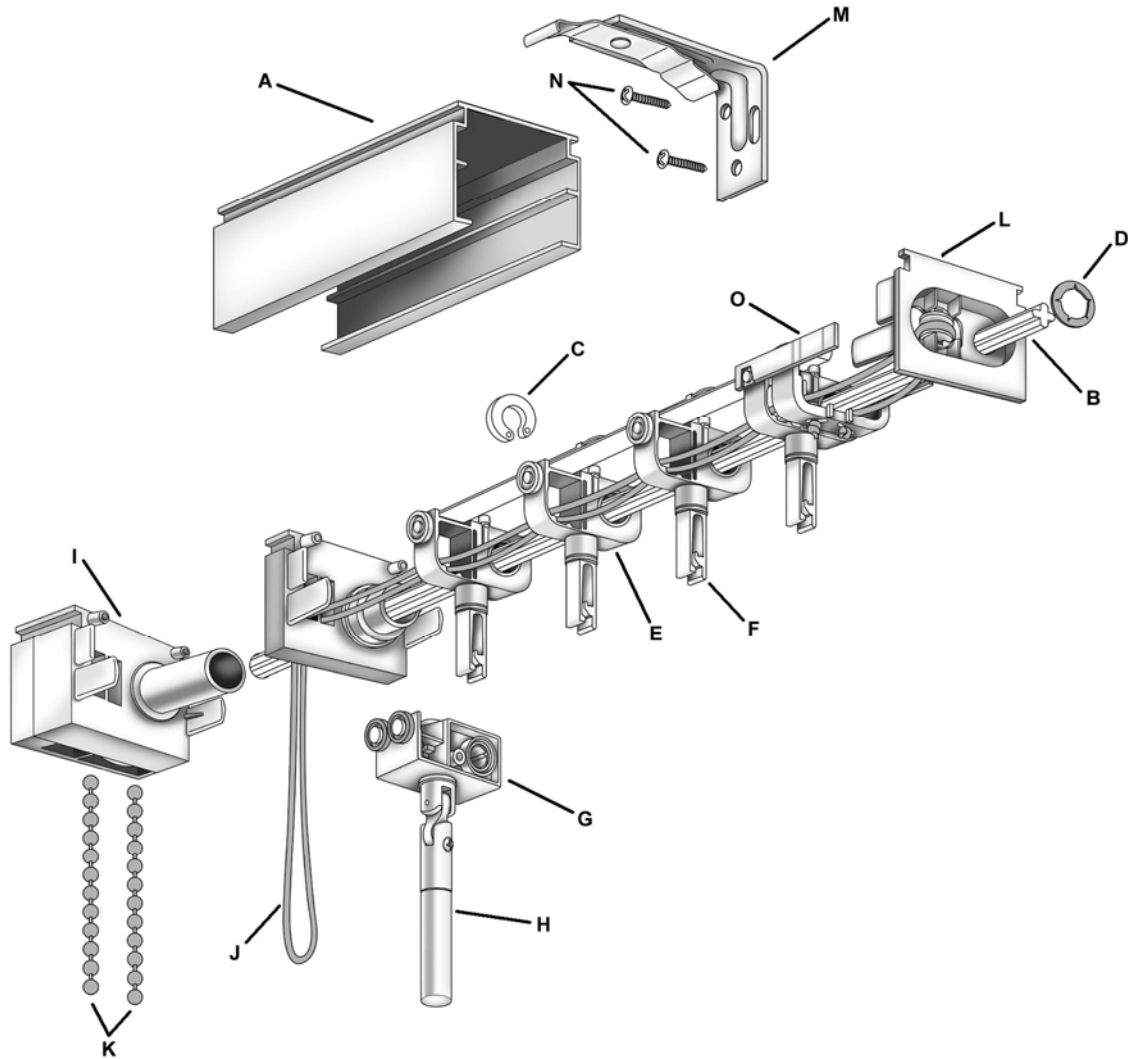


Product Cut Sheet: M-3000 / M-3200 Vertical Blind Headrail System



Parts:

- | | |
|--|--|
| A) Headrail – Heavy Duty Wall Aluminum | I) End Control |
| B) Pinion Rod (Tilt Rod) – 4 Prong | J) Nylon Cord |
| C) Stop C Clip | K) Chain #10 N.P.S. (Nickel Plated Steel) |
| D) Push Nut | L) Idle End |
| E) Discovery Carrier | M) Installation Bracket with Ceiling Clamp |
| F) Carrier Stem | N) Installation Screws |
| G) Wand Control | O) Cord Drive Runner (Master Runner) |
| H) Wand | |

System Features:

- 4-Prong Pinion Strap System
- Self-Aligning Wheeled Carrier
- Self-Lubricated Acetal parts
- Reinforced Strap between Carriers

Headrail Options:

- M-3000 Headrail = Cord & Chain Control
- M-3200 Headrail = Wand Control (Safety Track)

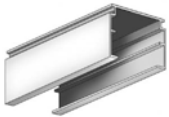
Mariak Contract
575 W. Manville Street
Rancho Dominguez, CA 90220

Ph: (800) 562-7425
Fx: (800) 459-6999
www.mariak.com

Mariak
Contract

Product Cut Sheet: M-3000 / M-3200 Vertical Blind Headrail System

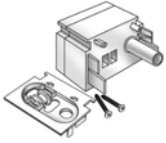
Headrail:



- Available in White or Ivory baked enamel or clear Anodized
- Aluminum Alloy T6 – 1 3/4" x 1 1/4" high
- Wall thickness – 0.045", ± 0.010"

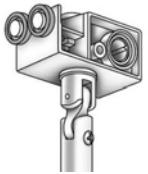
Controls:

Cord & Chain Control Option



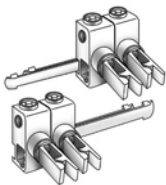
- Reduction control is made of acetal plastic which allows for precise control of light using #10 N.P.S. chain
- End controls are covered to enclose sprockets
- Traverse cord roller allows extended cord life and ease of operation

Wand Control Option (Safety Track)



- Equipped with a left and right idler end which holds the tilt rod and covers both ends of the headrail
- Control made of acetal plastic with a reduction gear
- Firmly encircles the tilt rod which provides smooth rotation

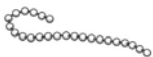
Carriers:



- Molded in acetal plastic with strap links attached
- A self-aligning carrier feature allows uniform rotation
- Two independent self-lubricating wheels for easy traversing
- Rotation of the louver is controlled by the precision-molded double worm pinion gear
- Carrier stem is round and constructed from polycarbonate to ensure long lasting durability.

Rotation:

Cord & Chain Control Option



- #10 N.P.S. (Nickel Plated Steel) chain
- 4-prong tilt rod is made of extruded aluminum
- Tilt rod passes through all the louver carriers, providing rotation to each louver by means of a precision-molded double worm pinion gear system

Wand Control Option (Safety Track)



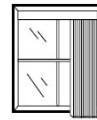
- Provides 180° rotation to each louver simultaneously through a gear system in the control housing, turning the 4-prong tilt rod

Stacking:

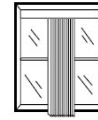
- One Way Draw (Left or Right)
- Split-Draw (Center Opening)
- Center Stack (Side Opening)
- Blind traverses by means of a synthetic traverse cord or wand control pull



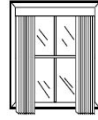
Left Stack



Right Stack



Center Stack



Center Split

Louver Spacing:

- Plastic strap link system
- Normal louver spacing has a 3/8" overlap
- Available in 2" and 3 1/2" louvers

Mounting Hardware:

- A variety of installation clips and brackets are available



Size Recommendations:

- Maximum Width – 192"
- Maximum Drop – 144"