

# VM ZINC<sup>®</sup> Roofs



Standing seam (QUARTZ-ZINC<sup>®</sup>) - James Madison's Montpelier Visitor Center (USA) - Architect: Glave & Holmes Associates - Installer: International Roofing

Shaping roofs according to the installation method, zinc adapts as easily to classic designs as to contemporary ones, always adding its special touch of elegance.

Unique in its diversity, VM ZINC<sup>®</sup> offers a range of 6 surface colors or aspects : Natural VM ZINC<sup>®</sup>, QUARTZ-ZINC<sup>®</sup>, ANTHRA-ZINC<sup>®</sup>, PIGMENTO<sup>®</sup> red, green and blue.

A Umicore brand



# Roof systems

## ■ Standing seam

### Tradition lives on...

- Can be installed vertically or diagonally
- Panel lengths up to 50+ feet
- Maximum waterproofing.

## ■ Flat lock panel

### Texture on a steep slope...

- Requires a steep slope and secondary waterproofing
- Provides a high textured aesthetic to projects
- Can be installed horizontally or vertically.

## ■ Sine wave corrugated

### Contemporary Vernacular

- A through-fastened undulating aesthetic
- Ideal for steep slopes
- Best in vertical applications.

## ■ VM DEXTER ZINC

### Roofing in a box...

- A complete roofing system in a box
- Easily installed
- Running bond or stacked bond patterns possible.

## ■ ADEKA®

### 45 degrees...

- Small and easily installed shingles
- Provide a textured aesthetic
- Excellent waterproofing.

## ■ VM ZINC® Structural roof

### for buildings with low to average hygrometry.

Construction system combining a VM ZINC PLUS standing seam roof with rigid mineral wool insulation on steel, wood or concrete supporting structures.

- Patented VM ZINC fixing system
- Competitive price for system.

## ■ DELTA VM ZINC System

### Cold roof application of zinc on incompatible substructures.

Standing seam or roll cap roof on a DELTA polyethylene dimpled membrane with special clips.

- Direct installation on all types of substructures
- Ideal for making hidden gutters on an incompatible substructure or for covering roof parapets on masonry
- Easily and quickly installed.

# VM ZINC<sup>®</sup> references



**Standing seam  
(QUARTZ-ZINC<sup>®</sup>)**  
James Madison's Montpelier  
Visitor Center (USA)  
Architect: Glave & Holmes  
Associates  
Installer: International Roofing



**ADEKA<sup>®</sup> (QUARTZ-ZINC<sup>®</sup>)**  
Private home (USA)

# VM ZINC<sup>®</sup> references



**Standing seam  
(QUARTZ-ZINC<sup>®</sup>)**

Bloorview (Canada)

Architect: Montgomery Sisam -

Contractor: Ellis Don Corporation

Installer: Flynn Canada

# VM ZINC<sup>®</sup> references



## Standing seam (ANTHRA-ZINC<sup>®</sup>)

Brenau Performing Arts Center, Gainsville University (USA)  
Architect: Lord Aeck Sargent Architecture - Contractor: Ben Hill Roofing



## (QUARTZ-ZINC<sup>®</sup>)

North Hampton Courthouse (USA)  
Architect: Ricci Associates  
Installer: James W. Cox & Sons



# Surface aspects

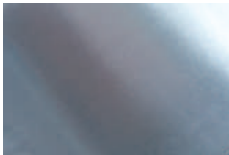


## Preweathered VM ZINC®



QUARTZ-ZINC®, PIGMENTO® blue, PIGMENTO® red, PIGMENTO® green, ANTHRA-ZINC®

## Natural VM ZINC®



### Additional information VM ZINC®

Catalogue, creations, technical specifications on  
[www.vmzinc-us.com](http://www.vmzinc-us.com)

see us at  
**Sweets**.com

Umicore Building Products USA Inc.  
3120 Highwoods Blvd, Suite 104, Raleigh NC 27604  
phone: 919-874-7173 • fax: 919-874-7140  
[www.vmzinc-us.com](http://www.vmzinc-us.com)

