

# SITE FURNISHINGS

SECURITY • PLANTERS • TABLES • BENCHES • RECEPTACLES  
BOLLARDS • DRINKING FOUNTAINS • SNUFFERS • CUSTOM



**PETERSEN**  
Precast and Metal Site Furnishings



# TABLES

FOR A COMPLETE LISTING OF PRECAST AND METAL TABLES VISIT [WWW.PETERSENMFG.COM](http://WWW.PETERSENMFG.COM)

**P**recast concrete tables are designed for exterior use and come in many colors and finishes. Most models are available in Handicap styles. Table tops & seats can be polished to give the product a smooth terrazzo appearance. Additional charge per unit.



**R-OTS**  
DOVE GRAY WITH CUSTOM  
POLISHED TOPS & SEATS



**OTS**  
SAND TAN PERMA STONE



**RTOV-72**  
LIGHT BROWN  
WITH LIGHT  
BROWN LSB LEGS

**STURDY, HEAVY WEIGHT TABLES THAT ARE PERFECT IN ANY ENVIRONMENT.**



**MOST MODELS AVAILABLE IN HANDICAP STYLES**

**UMBRELLA HOLES AVAILABLE ON MOST TABLES.**



**RT-60**  
DOVE GRAY SMOOTH  
PERMA STONE LEGS



**RT-M-6**  
HUNTER GREEN MESH  
PERMA STONE LEGS



**RT-W**  
REDWOOD WITH  
DURA BRITE LEGS

Practical and functional, classic rectangle table

Concrete base supports expanded metal top & seats.

Concrete is a nice combination with wood seats and top.



# SECURITY PLANTERS

FOR A COMPLETE LISTING OF PRECAST PLANTERS VISIT [WWW.PETERSENMFG.COM](http://WWW.PETERSENMFG.COM)

## LARGE PLANTERS WEIGHING UP TO 4,000 LBS CAN PROVIDE MAXIMUM SECURITY.



**C**reate a safe atmosphere.

Planters have a dual function serving as barriers and creating an inviting scenery when filled with lavish greenery or floral arrangements.



Round Aurora series planters available in nine sizes.

**PLANTERS ARE  
AVAILABLE IN  
CONCRETE OR GFRC**





# BENCHES

FOR A COMPLETE LISTING OF PRECAST AND METAL BENCHES VISIT [WWW.PETERSENMFG.COM](http://WWW.PETERSENMFG.COM)

**INTEGRATING YOUR LANDSCAPING IS IMPORTANT...**  
**WE OFFER BENCHES WITH A UNIQUE STYLE THAT CAN HELP YOU WITH THAT FINISHING TOUCH.**

**SEE PAGE 8 FOR COLOR AND TEXTURE OPTIONS.**



**PB-X**  
 DOVE GRAY POLISHED WITH GRAY SMOOTH LEGS



**HB-72**  
 SAND TAN SMOOTH

**CB-2**  
 LIGHT BROWN WITH LIGHT BROWN PERMA STONE LEGS



**NWB**  
 DOVE GRAY LSB



**HCBM**  
 BLUE MESH DOVE GRAY LSB

**HMBM**  
 BLUE MESH PERMA STONE

For a more modern decor our benches without backs offer a unique alternative. Choose between textured or smooth concrete legs paired with a smooth seat.



**PB-SQ-6**  
 DOVE GRAY WITH PERMA STONE LEGS

**VB-72**  
 LIGHT BROWN WITH LIGHT BROWN LSB LEGS



**SB-96**  
 SAND TAN LSB

**SBL-96**  
 SAND TAN SMOOTH BROWN ETCH LEGS



12 93 00/PET  
BuyLine 5504

TCR-PD  
DOVE GRAY LSB

RDTC-24  
SAND TAN SMOOTH

TCRCA-PL  
PERMA STONE

TCRCA-RR  
BROWN  
DURA BRITE

# WASTE RECEPTACLES

FOR A COMPLETE LISTING OF PRECAST AND METAL PRODUCTS VISIT [WWW.PETERSENMFG.COM](http://WWW.PETERSENMFG.COM)

**C**ontrol unsightly litter problems with attractive, durable concrete receptacles. All containers are available with cast-in-place or screen printed logos.



TCR-RM  
PERMA STONE

TCR-DF  
PERMA STONE

TCR-MD-30  
PERMA STONE

TCR-MP-30-B  
SAND TAN  
PERMA STONE

TCRCA  
TERRA COTTA  
LSB



TC-SCP-NO

TC-SC-P-32

TC-SC-D-30

TC-SC-C-30

TC-SC-30

Plastic  
Liners  
Sold  
Separately

Round receptacles with various lid options. Lid materials consist of plastic, spun aluminum, and fiberglass.

**RIGID PLASTIC LINERS ARE SOLD SEPARATELY.**

**SEE PAGE 8 FOR COLOR AND FINISH OPTIONS.**

**WASTE RECEPTACLES ARE AVAILABLE IN CONCRETE OR GFRC**



TCSQ  
SAND TAN LSB

TCR-AUR  
DOVE GRAY LSB

TCVT  
TERRA COTTA LSB

[www.petersenmfg.com](http://www.petersenmfg.com)  
1-800-832-7383





# BOLLARDS

VISIT [WWW.PETERSENMFG.COM](http://WWW.PETERSENMFG.COM) OR CALL 1-800-832-7383



**AL-2**

DOVE  
GRAY LSB

**BP**

SAND TAN LSB

**B-7**

PERMA  
STONE

**BC**

LIGHT  
BROWN  
LSB

**B-5**

PERMA  
STONE

**B-4**

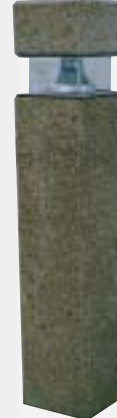
LIGHT  
BROWN LSB

**SQB-12**

DOVE GRAY LSB



**AL-2**  
W/LIGHT  
PERMA  
STONE



**SQB-11-L**  
PERMA  
STONE



**B**ollards light a path or deter unwanted traffic. Bollards can be ordered to match existing planter styles or customized for your site.

FOR CUSTOM INFORMATION CALL 1-800-832-7383

## DRINKING FOUNTAINS



**DF-PB**

WITH CHILDS STEP  
DOVE GRAY LSB

**DFH-3**

DURA BRITE

**DFH-C**

PERMA  
STONE

**DFHT-3**

PERMA  
STONE

**DF**

PERMA  
STONE



All DFH models are Handicap accessible and are available with side faucets. Freezeproof models are also available.



**ELECTRIC WATER COOLER**  
Reinforced concrete with exposed aggregate finish with polished chrome plated bubbler.

## SNUFFERS



**CS**

PERMA  
STONE

**CS-H**

PERMA  
STONE

**CSB**

PERMA  
STONE

**CSR-F**

PERMA  
STONE

**CSR-17**

DURA  
BRITE



**CSR-COL**  
SAND TAN LSB



**A-19**  
SAND TAN LSB



**CS-V**  
DOVE GRAY SMOOTH



# METAL FURNISHINGS

FOR A COMPLETE LISTING OF METAL FURNISHINGS VISIT [WWW.PETERSENMFG.COM](http://WWW.PETERSENMFG.COM)

MODERNIZE ANY PROJECT WITH THIS COLLECTION OF METAL FURNITURE. CRAFTED WITH THE FINEST QUALITY AND FINISH AVAILABLE. EXPERIENCE TRADITIONAL OR WHIMSICAL SETTINGS OF YOUR CHOICE.



**LB-48 – BENCH**  
BIKE BLACK



**BRKT32 – BRECKENRIDGE TRASH**  
EVERGREEN



Matching planters, waste receptacles and ash urns available for most metal furniture styles.

**ERKS – SNUFFER**  
LITTLE RED WAGON



**BRKBB – BRECKENRIDGE BIKE BOLLARD**  
BIKE BLACK



**NVBB48 – NOVAK BENCH**  
BIKE BLACK



**EB48 – ENGLISH BENCH**  
LITTLE RED WAGON

# COLOR AND FINISHES

VISIT [WWW.PETERSENMFG.COM](http://WWW.PETERSENMFG.COM) OR CALL 1-800-832-7383

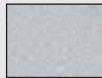
CONCRETE STAIN AVAILABLE ON SMOOTH SURFACES. CUSTOM COLORS AND TEXTURES AVAILABLE UPON REQUEST.

## PRECAST CONCRETE OR GFRC, COLORS AND FINISHES

### A - SMOOTH FINISHES AVAILABLE FOR PRECAST CONCRETE OR GFRC



SAND TAN



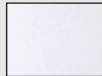
DOVE GRAY



LITE BROWN



TERRA COTTA



CUSTOM SNOW WHITE

### B - EXPOSED AGGREGATE FOR PRECAST CONCRETE



DURA BRITE



PERMA STONE



SLATE STONE



SAND TAN ETCH



GRAY ETCH



LITE BROWN ETCH

### C - LITE SAND BLASTED TEXTURES FOR PRECAST CONCRETE OR GFRC



SAND TAN LSB



GRAY LSB



LITE BROWN LSB

## METAL, POWDER COATING STANDARD COLORS:



BAY FOG



AERO YELLOW



BURGUNDY 3009



BROWN DERBY



RAPID TAN III



EVERGREEN



GRAY MINI-TEX



BIKE BLACK



LITTLE RED WAGON



SPARTAN BRONZE



PRO GREEN II



POST OFFICE BLUE II

Note: Colors will vary slightly in brochure compared to actual product. Samples upon request.



## TREE GRATES

Streetscaping is made easier with concrete bollards and tree grates. They offer an attractive alternative to traditional steel models.

## GENERAL SPECIFICATIONS

- I. **MANUFACTURER'S QUALIFICATIONS** - Petersen Mfg. maintains at all times a quality control program as herein outline so as to insure that all precast meets all requirements as specified under physical requirements. All precast shall be manufactured by skilled workmen who have had at least five (5) years experience in similar work and supervised by foremen certified by the ACI.
- II. **MANUFACTURING** - All precast work shall be true to dimension and have clean, accurate arises and details faithfully executed. Reinforcing steel shall conform to ASTM 615 and deformations shall conform to ASTM-M-305. All precast work shall have a minimum compressive strength of 5,000 psi at 28 days of age when tested by means of cylinder molds (6x12) from the materials. There shall be a maximum of 4-6% air entrainment for all precast according to ASTM standards.
- III. **MOLDS** - The forms for the precast units shall be constructed of laminated metal or fiberglass designed to withstand casting pressures without distortion. All anchors, inserts, bolts, etc. will be placed and secured in the forms as required for the attachment and handling of the units. These shall be clamped so as to hold them in position during fabrication
- IV. **PHYSICAL CHARACTERISTICS** - All exposed surfaces are treated to remove the surface matrix and expose the aggregate produced by chemical retardant - not sandblasting. All precast shall have the water repellent sealer treatment applied in strict accordance with manufacturer's specifications. All tolerances shall be within 1/8" of specified dimensions, designed for structural analysis and calculations.
- V. **COLOR** - Color to be uniform throughout as approved by owner or specifier in accordance with manufacturer's recommendations
- VI. **MATERIALS** - Portland Cement: ASTM C150 Type 1 or 3All aggregate to meet ASTM C33 Specifications
- VII. **REQUIRED MATERIALS FOR APPROVAL** - A. Shop drawings with dimensions, general construction component parts, anchoring details and installations.  
B. Samples upon request of architect. C. Complete data on manufacturer's specifications and technical information.
- VIII. **APPROVED MANUFACTURER:**  
Petersen Concrete Leisure Products  
Division of Petersen Mfg. Company, Inc.  
2475 Hwy 30, P. O. Box 664  
Denison, Iowa 51442 • 712-263-2442

# PETERSEN

## Manufacturing Co., Inc.

P.O. Box 664 ■ Denison IA 51442  
712-263-2442 ■ Toll Free: 1-800-832-7383  
FAX: 712-263-5090 ■ Email: [sales@petersenmfg.com](mailto:sales@petersenmfg.com)  
[www.petersenmfg.com](http://www.petersenmfg.com)

Call for our complete catalogue  
Product CD also available  
1-800-832-7383

see us at  
**Sweets**.com

Printed in the USA