

### Product Data and Installation Guide

#### 1. Product Description

As the pioneer of fire resistive, flexible duct enclosure protection, Thermal Ceramics continues to provide reliable and safe fire protection solutions. To complement the FireMaster FastWrap® XL grease duct wrap enclosure system, Thermal Ceramics now offers fully fire tested and building code compliant FireMaster pre-fabricated duct access doors. These FireMaster Access Doors combine the proven reliability of DuctMate® F2-HT high temperature doors and the fire tested performance of FireMaster FastWrap XL flexible enclosure wrap.

These pre-insulated and ready to install doors offer time and money savings versus the typical field fabricated access door, and provide more reliability for grease and fire containment.

#### Product Features

- Access doors are insulated with FireMaster FastWrap XL, which is thin and lightweight
- Zero clearance to combustibles
- High temperature rated - 2000°F
- Robust, durable system
- Approved in ICC-ES Report ESR 2213 (XL3 Model)

#### Product Benefits

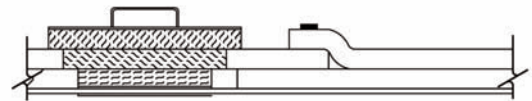
- Easy to remove or replace
- Saves labor and time
- Easy installation - No special tools required
- Complete with threaded rods, wing nuts, and washers
- Built-in quality consistent from project to project
- Clearly identified
- No welding required at the job site
- Access holes in the duct are made to match the doors

#### 2. Available Sizes

- 10" x 6"
- 12" x 8"
- 16" x 12"
- 18" x 14"

#### 3. Performance Specifications

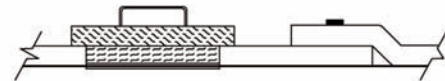
Reference Standard	Standard No.	Performance	
Grease Duct Enclosure System	ASTM E2336	Pass	XL3
Section 16.1 - Non-combustibility	ASTM E136	Pass	
Section 16.2 - Fire Resistance (wall)	ASTM E119	Pass	XL3
Section 16.3 - Durability Test	ASTM C518	Pass	
Section 16.4 - Internal Fire Test	ASTM E2336	Pass	XL3
Section 16.5 - Fire Engulfment (duct)	ASTM E814/E119	Pass	
	UL 1978	Pass	XL2



ASTM E 2336 Compliant Enclosure and Door System  
FireMaster F2-HT-XL3 Access Door  
3 - Layers of FastWrap XL on Door

#### FireMaster F2-HT-XL3 Access Doors

Opening Size	Ordering Code
10" x 6" Door Opening	434-6970-034-99X3
12" x 8" Door Opening	434-6970-035-99X3
16" x 12" Door Opening	434-6970-037-99X3
18" x 14" Door Opening	434-6970-036-99X3



UL 1978 Compliant Enclosure and Door System  
FireMaster F2-HT-XL2 Access Door  
2 - Layers of FastWrap XL on Door

#### FireMaster F2-HT-XL2 Access Doors

Opening Size	Ordering Code
10" x 6" Door Opening	434-6970-034-99X2
12" x 8" Door Opening	434-6970-035-99X2
16" x 12" Door Opening	434-6970-037-99X2
18" x 14" Door Opening	434-6970-036-99X2

#### 4. Installation:

##### Materials and Equipment:

- FireMaster Pre-insulated Access Door – Complete with:
  - DuctMate F2-HT access door with 2300°F high temperature gasket
  - Template to cut correct access opening sized to fit the supplied door
  - Extended all-thread rods, attached to inner 16 gauge plate
  - Inner wing nuts to tighten access door and provide grease tight seal
  - 2 or 3 layers of Insulation depending on XL2 or XL3 system supplied
  - Outer 16 gauge insulation cover, with code prescribed signage
  - Outer wing nuts required to tighten insulation cover against duct
- Minimum 3” wide aluminum foil tape
- Insulation knives

##### General:

##### Preparation of the grease duct enclosure system and duct to receive FireMaster pre-insulated access door:

Prior to installation of the FireMaster grease duct enclosure system, use the provided cut-out template to mark and cut an opening in the duct at building code or specification prescribed locations. Install the FireMaster duct enclosure sys-

tem according to the Thermal Ceramics installation instructions. Cut the layers of insulation above the access opening to the same size as the access opening. Next, cut the interior layer of insulation 1/2” larger on all sides to accommodate the actual size of the access door and first layer of insulation. ASTM E 2336 compliant systems will have 2 layers of duct enclosure insulation on the duct which will require that the exterior layer of insulation be cut 1 1/2” larger on all sides than the inner insulation layer to provide a tight fit against the overlaps built into the pre-insulated access door. Repair cut edges of duct insulation with minimum 3” wide aluminum foil tape.

##### Installation of the FireMaster pre-insulated access door:

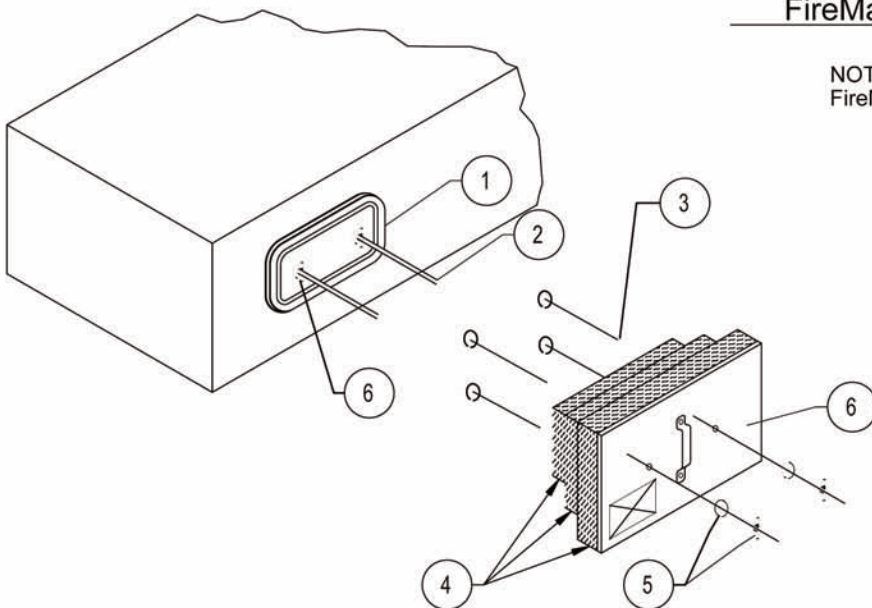
Remove the insulation pack and outer cover plate from the pre-insulated DuctMate F2-HT door. Holding the DuctMate F2-HT access door, loosen the inner wing nuts to open a gap between the inner 16 gauge plate and the 2300°F white gasket materials. Fit the inner 16 gauge steel panel inside the access opening by turning at a slight angle to clear the access opening. Center the inner 16 gauge steel plate within the opening, and tighten the wing nuts to hand-tight. Install the insulation pack and 16 gauge outer cover plate over the all-thread rods. Tighten the provided wing nuts against the 16 gauge insulation cover plate until hand-tight. FireMaster preinsulated access doors are provided with a 16 gauge outer cover plate with building code required signage “Access Door – Do not obstruct”.

FireMaster® FastWrap® XL  
Prefabricated Access Door Systems  
Commercial Kitchen Grease Duct Enclosure System

#### FireMaster F2-HT-XL3 Door System

NOTE: Available from Thermal Ceramics  
FireMaster Distributors.

Note:  
Label Required  
"Access Door"  
Do Not Obstruct



Legend	
1	DuctMate F2-HT Access Door with 2300°F gasket
2	All thread rods
3	Installation pins with speed clips
4	FireMaster FastWrap XL blanket with minimum 1” overlaps and all edges sealed with aluminum tape
5	Wing nuts and washers
6	Outer cover plate labeled