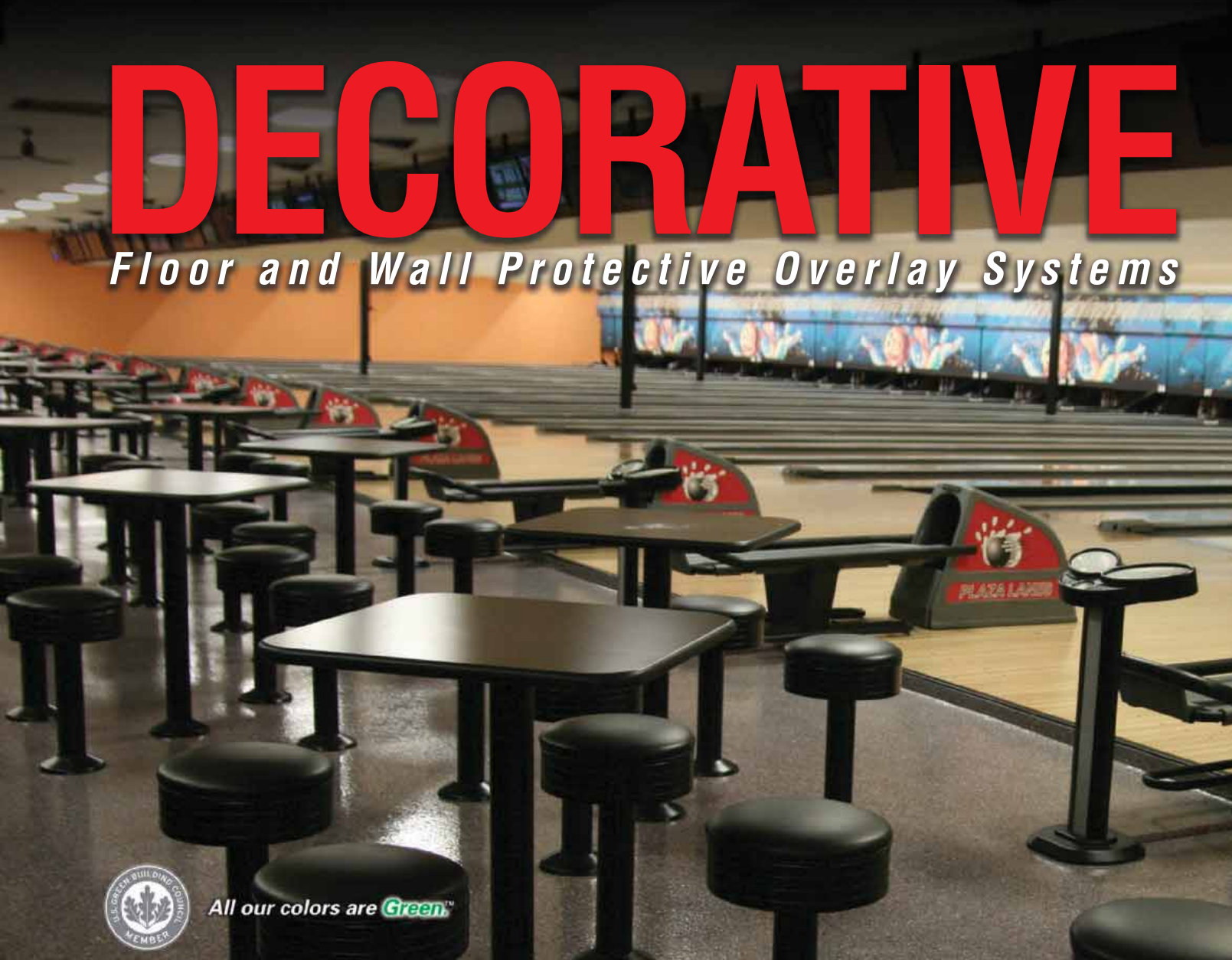




09 67 00/CRR
BuyLine 3325

DECORATIVE

Floor and Wall Protective Overlay Systems



All our colors are **Green**™



Residential & Hotels



Commercial & Retail



Institutional & Educational

Product Selection Chart

Crown Polymers delivers quality, economy, and durability. Plus, creative custom design and product support capabilities.

More than just a floor is what you specify when you choose Crown Polymers Flooring Solutions!

Applications	Decorative											Top Coats			Industrial						Support							
	CrownStone	CrownQuartz	CrownAccent	CrownShield	CrownShield 5L	CrownShield 3D 5L	CrownSpatter	CrownThin-Set Epoxy Terrazzo	CrownImage	CrownFlake, Chips, Hybrid & Brindle	CrownVenetian	CrownNatural Stone	CrownClear	CrownPro 4 & 6	CrownGlow	CrownPro AcidShield	CrownPro SolventShield	CrownPro EPC TempShield	CrownPro SparkShield	CrownPro Electric Shield	CrownWear 20 EPC-LTC	CrownCrete	CrownEncap	CrownCote Vapor Barrier	CrownFlex Membrane	CrownFlex Joint Sealer	CrownFlex 500 & EVA	CrownCove
Animal Kennels		•		•	•		•	•	•	•			•	•	•							•		•	•	•	•	•
Auto Showrooms	•	•					•	•	•	•	•		•	•	•			•	•					•		•	•	•
Automobile Service Areas		•		•	•		•	•	•	•			•	•	•									•		•	•	•
Churches	•	•	•	•	•		•	•	•	•	•	•	•	•										•		•	•	•
Clean Rooms		•		•	•		•	•	•	•	•		•	•	•			•	•	•	•	•	•	•	•	•	•	•
Concrete or Wood Floors	•	•	•	•	•	•	•	•	•	•	•	•	•	•	•	•	•	•	•	•	•	•	•	•	•	•	•	•
Correctional Facilities		•	•	•	•		•	•	•	•			•	•	•			•	•	•	•	•	•	•	•	•	•	•
Food Processing Plants		•	•	•	•		•	•	•	•			•	•	•	•	•	•	•	•	•	•	•	•	•	•	•	•
Food Service Areas		•	•	•	•		•	•	•	•			•	•	•			•	•	•	•	•	•	•	•	•	•	•
Galleries	•	•	•	•	•	•	•	•	•	•	•	•	•	•				•	•	•			•	•	•	•	•	•
Health Care Facilities	•	•	•	•	•		•	•	•	•	•		•	•	•			•	•	•	•	•	•	•	•	•	•	•
Heavy Traffic Areas		•		•	•		•	•	•	•		•	•	•	•	•	•	•	•	•	•	•	•	•	•	•	•	•
High Rise Building Floors	•	•		•	•	•	•	•	•	•	•	•	•	•				•	•				•	•	•	•	•	•
Hospitals	•	•	•	•	•		•	•	•	•			•	•	•			•	•	•	•	•	•	•	•	•	•	•
Hotels	•	•	•	•	•	•	•	•	•	•	•	•	•	•			•	•	•	•	•	•	•	•	•	•	•	•
Interior Entrances	•	•		•	•		•	•	•	•	•	•	•	•				•	•		•		•	•	•	•	•	•
Interior or Exterior	•	•	•	•	•	•	•	•	•	•	•	•	•	•	•	•	•			•	•	•	•	•	•	•	•	•
Laboratories		•		•	•		•	•	•	•			•	•	•	•	•	•	•	•	•	•	•	•	•	•	•	•
Lobbies	•	•	•	•	•	•	•	•	•	•	•	•	•	•				•	•				•	•	•	•	•	•
Locker Rooms		•		•	•		•	•	•	•			•	•	•							•		•	•	•	•	•
Manufacturing Plants		•		•	•		•	•	•	•			•	•	•	•	•	•	•	•	•	•	•	•	•	•	•	•
Mechanical Rooms				•	•				•				•	•	•							•	•	•	•	•	•	•
Multi-purpose Rooms		•	•	•	•		•	•	•	•			•	•	•			•	•			•		•	•	•	•	•
Museums	•	•	•	•	•	•	•	•	•	•	•	•	•	•				•	•				•	•	•	•	•	•
Offices	•	•	•	•	•		•	•	•	•	•	•	•	•				•	•				•	•	•	•	•	•
Packaging Rooms		•	•	•	•		•	•	•	•			•	•	•				•	•			•	•	•	•	•	•
Patios	•	•	•			•	•	•	•	•	•	•	•	•									•	•	•	•	•	•
Pedestrian Traffic Areas	•	•	•	•	•	•	•	•	•	•	•	•	•	•				•	•			•	•	•	•	•	•	•
Pharmaceutical Plants		•		•	•		•	•	•	•			•	•	•				•	•		•	•	•	•	•	•	•
Precast Concrete Balconies	•	•		•	•		•	•	•	•			•	•	•								•	•	•	•	•	•
Pretreatment of Floors														•									•	•	•	•	•	•
Production Rooms		•		•	•		•	•	•	•	•	•	•	•	•	•	•	•	•	•	•	•	•	•	•	•	•	•
Restaurants	•	•	•	•	•	•	•	•	•	•			•	•	•			•			•		•	•	•	•	•	•
Restrooms		•		•	•		•	•	•				•	•	•								•	•	•	•	•	•
Retail Stores and Showrooms	•	•	•	•	•	•	•	•	•	•	•	•	•	•				•	•				•	•	•	•	•	•
Seamless/Sanitary Counter Surfaces		•					•	•	•				•	•	•			•	•	•				•				•
Shower Areas		•											•	•	•								•	•	•	•	•	•
Sidewalks	•	•	•			•	•	•	•	•	•	•	•	•								•		•	•	•	•	•
Slab-On-Grade Concrete Floors	•	•	•	•	•	•	•	•	•	•	•	•	•	•	•	•	•	•	•	•	•	•	•	•	•	•	•	•
Vehicular Traffic Areas		•		•	•		•	•	•	•			•	•	•	•	•	•	•	•	•	•	•	•	•	•	•	•
Wall Surfaces		•							•	•			•	•	•	•	•	•	•	•	•	•	•		•	•	•	•
Water Treatment Plants		•		•			•	•	•				•	•	•	•	•	•	•	•	•	•	•	•	•	•	•	•

2 Designed Specifically for High Traffic Decorative Environments. For More Information, Call Today! 888.732.1270

Crown Polymers® Exclusives: Performance, Beauty & Value

CrownCove Fast & Economical

CrownSpatter™

Product 312 & 313

A New Kind of Polymer Floor

Recommended Use: For concrete, wood or steel floors such as those found in show-rooms, garages, restaurants and hospitals, where a beautiful, durable, seamless surface is desirable. Perfect for applications where a one-of-a-kind design is desirable. Ideal for increasing the creative possibilities for interior designers and discerning customers.

System Description: A Crown exclusive.

A spray-on floor that offers seamless, monolithic bond to the concrete. CrownSpatter offers hundreds, if not thousands, of colors in an infinite number of marbled, mottled, or speckled patterns. Consists of an epoxy base with a polyurea ultraviolet resistant top coat that yields an abrasion resistant, long lasting, easy to clean surface with permanent color. Ready for use within 24 hours. Safety walking surfaces exceed OSHA and ADA slip resistant requirements. Truly, a premium floor at an affordable price.



CrownSpatter™

CrownHybrid™ CrownBrindle™

Products SP645, SP646 & SP647

A Distinctive, Appealing New Look

Recommended Use: For concrete, wood or steel floors such as those found in show-rooms, retail stores, restaurants, hospitals, garages, homes, and where a beautiful, durable, seamless vinyl flake floor surface is desirable. Use CrownHybrid, CrownBrindle, CrownChips, or CrownFlake in combinations on the main floor surface, combined with borders or inlays to create a distinctive look.

System Description: CrownHybrid and CrownBrindle are exclusive vinyl flake designs. They offer a beautiful combination of colors and textures that help create surfaces with a fashion-forward appearance. Multi-colored CrownBrindle flakes are a handsome Crown Exclusive. Once you see the effect, you will discover many new and exciting possibilities. These system are available in standard natural stone, pastel blends or customized blends to match any color scheme or decor.

CrownCove™

Product 701, 704 & 706

Fast Around Corners & Straightaways

Recommended Use: A polymer precast floor-to-wall cove system is used for commercial, retail, institutional, and industrial applications with selected floor polymer or cementitious overlays. Its seamless design stops water, chemicals, insects, bacteria, debris, dirt and floor cleaning solutions from puddling or seeping into the floor-to-wall juncture. It's decorative and industrial tough. Placement is cost effective and faster than hand trowel methods – and always looks the same from start to finish.

System Description: A Crown exclusive.

The cove system is a precast polymer base molding available in both 4, 6 and 8-inch (100, 150 and 200 mm) heights, with pre-formed pieces that create inside and outside corners. When CrownCove is coated or overlaid with polymers, the finished cove provides a uniform, seamless, integral floor-to-wall juncture; producing the most sanitary and easily maintained floors available.



CrownCove™ & CrownFlake™



CrownCove™ & CrownPro™

"Walk & drive all over us... We're tough, we can take it!"

 Indicates a Crown Polymers Exclusive

Create Imaginative Custom Designs with Crown Polymers® Decorative Overlays!

Corporate Logos, Borders & Graphics

CrownQuartz™

Product 306

A Popular Decorative Floor

Recommended Use: Well-suited for virtually any environment including retail, commercial, food processing, institutional, pharmaceutical, residential, pool decks, zoos, and aquatic areas above and below the water line, as well as animal care facilities. Wet floor surfaces do not change the attractive encapsulated colors.

System Description: Pigmented colored quartz aggregate is mixed with an epoxy base coat and top coated with UV resistant polyurea to create a decorative and durable Epoxy Polymer Concrete. CrownQuartz is useable on interior and exterior concrete applications. Low Odor. Fast cure systems are useable in 24 hours. Resists growth of fungus and bacteria. Non-porous surface provides excellent chemical and water resistance. Complies with OSHA and ADA safety surface profile standards.

CrownStone™

Product 305

Gives You The Edge ... Style & Safety!

Recommended Use: For interior use on wood or concrete floors. Ideal for lobbies, entrance areas, hallways, offices and pool decks where walking safety is required. Non-yellowing and UV resistant.

System Description: Dimensional graded stones are pigmented and bonded together to create an open structured epoxy polymer concrete that is self-priming during placement. The stone surface traps water and ice that falls off shoes and boots maintaining a safe walking surface. The space between the stones creates a quiet walking surface and a cushion-effect under foot. Fire retardant, anti-allergenic and excellent acoustical properties make this a must when a slip resistant floor is required.

CrownVenetian™

Product 800

More Than Just a Floor....

Recommended Use: Ideal for indoor or outdoor high traffic areas in retail, dining, commercial and residential settings. The beauty and elegance of exposed aggregate allows for unlimited design possibilities.

System Description: Strong, durable, thin cementitious overlay with a protective epoxy or polyurea top coat. Seamless or jointed, with soft or bright colored aggregates, or other medias, embedded in a gray or white portland cement base. Unlimited natural stone or glass color combinations will create a stunning effect. Nearly no odor during application. Fast curing. The dense surface is easy to clean and is also LEED® Green. Imagination is your only limitation!



CrownQuartz™



CrownStone™

CrownImage™

Product 308 & 310

Unique Three-Dimensional Appearance

Recommended Use: For applying corporate trademarks, logos, illustrations, product branding, safety signs and directions and other graphic images to floors in environments such as lobbies, showrooms, factories, hallways and corporate offices. For interior and outdoor applications.

System Description: The system is a composite of a printed fabric that is applied to an epoxy overlay. The fabric is bonded to the overlay with UV resistant polyurea. The finished composite is then textured to meet OSHA and ADA slip resistant standards. The overlay creates a three-dimensional appearance. The inlaid images are so realistic that people often try to pick them up.



CrownImage™



CrownVenetian™ & CrownPro™

Create Decorative Floors with Endless Variety & Unlimited Possibilities

Long-Lasting Systems Built For Traffic!

CrownAccent™ Product 328

The "Stained Look" Surface That Lasts!

Recommended Use: When a stain appearance is desired CrownAccent enhances the floor surface with extremely long wear resistance for commercial, institutional and residential environments.

System Description: A translucent polymer that stains the cement and highlights the exposed aggregate. Creates a stylish fashion-forward appearance that is durable, attractive, economical and easy to clean. Expect years of service. Easy to refinish and made to look new again.



CrownAccent™



Stenciled CrownQuartz™ & CrownHybrid™

CrownFlake™, CrownChips™, CrownHybrid™, CrownBrindle™

Products SP632, 633, 644 & 645

Create Those Special Atmospheres

Recommended Use: For concrete or wood floors such as those found in showrooms, garages, locker rooms, restaurants, hospitals and balconies, where a beautiful, durable, seamless surface is desirable on interior or outdoor uses.

System Description: The uniqueness of each of these polymer overlays is the size and shape of the vinyl flakes within each system. They are available in three distinct mixtures, each with a different look designed to create a special mood within any environment. Standard and custom solid colors and blends are available. Flakes are encapsulated in an epoxy base coat for superior adhesion. Top coat options include epoxy, polyurethane or polyurea. Durable safety walking surfaces exceed OSHA and ADA slip resistant requirements.

Crown Natural Stone™ Product 371

Exposed Aggregate Overlay

System Description: A troweled epoxy polymer concrete that highlights the natural stone appearance. The dense overlay is used for floors, countertops, bench and wall panels.



CrownFlake™

CrownShield® 3-D SL Product 316

A Three-Dimensional Experience

Recommended Use: Ideal for dramatic applications such as hair salons, night clubs or where an ultra dramatic effect is desired. Beautiful in homes or around pool decks and patios.

System Description: A Crown Polymers exclusive. A 100% solids, nearly odor free, air releasing, non-shrink, self-leveling polymer overlay. Creates a unique 3-D visual effect, with sparkling multi-color glitter, and variety of proprietary visual components. Smooth or textured surfaces. Easy to clean and maintain.

CrownCrete™

Industrial or Industrial Decorative

Recommended Use: Ideal for use indoor and outdoor environments including meat, poultry, dairy, beverage and pharmaceutical processing plants in addition to processing and packaging facilities, commercial kitchens, freezers, coolers, warehouses & shipping docks.

System Description: CrownCrete™ modified novolac polymer concrete resurfacing floor overlays are resistant to abrasion, impact, hot spillages and chemicals. Durable enough to endure thermal shock, aggressive high pressure, steam cleaning and scrubbing

Crown Thin-Set Epoxy Terazzo™ Product 370

Beauty and Durability Remain Constant.

Recommended Use: Floors requiring additional thickness for large volumes of pedestrian traffic.

System Description: 100% Solids, Epoxy Polymer Concrete incorporates decorative aggregate for 1/4" to 3/8" thin set, jointless or jointed pattern floors. Can include placement of graphic elements including patterns, logos, borders and other decorative elements.

Crown Polymers® Epoxy, Polyurea & Polyurethane Top Coats

A Top Coat For Every Application

CrownClear™

Products 324, 325, 326

Durable and Odorless!

Product Description: Three unique two-component odorless epoxy clear coat formulas, low viscosity, 100% solids. No. 324 for heavy back room uses, No. 325 cures down to 36°F (2°C) and No. 326 provides the best epoxy UV protection.



CrownPro™

CrownPro™ 4, 6

Products 330 & 333

UV Resistant

Product Description: Two easy to apply polyurea formulas that are "Green", 100% solids, zero VOC's, low viscosity, clear or pigmented with nearly no odor during application. Best for interior or exterior use where UV resistance is required.



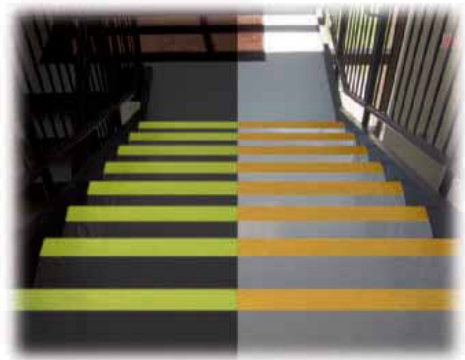
CrownPro™

CrownGlow™

Product 345

Safety Starts Here

Product Description: Invisible until the lights go out! CrownGlow is a clear topcoat that contains an exclusive phosphor formulation that radiates a familiar soft green glow in dark conditions. Ideal for stair treads, floor and wall surfaces.



CrownGlow™

High Performance Decorative & Durable Solid Color Floor Overlays

CrownShield®

50, 40, 28 & 40-2

Products 319, 320, 321, 322, 323

Recommended Use: Used in decorative commercial and institutional applications and the toughest heavy-duty industrial and manufacturing applications.

System Description: A family of high build pigmented epoxy polymers designed for a variety of environmental exposures. Curable on substrate temperatures from 28°F - 110°F (-2°C - 43°C), speed of cure from 2-12 hours. Applied as thin coatings or thick epoxy polymer concrete overlays. The finished floor appearance can be a solid color, random flaked or beautiful patterns of colors and shapes.



CrownShield® SL

An Overlay For Every Application

High Performance Protection For New Or Restored Concrete Floors*

Industrial & Commercial Use

CrownShield® SL

Product 315

A Crown Polymers Exclusive!

Recommended Use: Ideal for light to heavy-duty commercial or industrial concrete surfaces requiring releveling or a thicker overlayment.

System Description: Self-leveling 1/8" or 3/16" epoxy polymer concrete overlay that becomes a monolithic part of the concrete. A non-porous aggregate filled overlay with high physical strength properties designed for interior or exterior use. The finished appearance when left as a smooth surface has a high reflective gloss, or a reduced gloss when textured. Add color flakes and a clear top coat to change from a tough industrial surface to a highly decorative finish.

CrownPro™ SolventShield

Product 351

A High-Tech Protector

Recommended Use: For environments where solvent spills occur and solvent resistance is desirable.

System Description: Two component novolac aliphatic epoxy formula is a 100% solids, low odor, epoxy polymer concrete that becomes a monolithic part of the concrete. Available with ESD.



CrownShield® SL

See Our Industrial & Food Processing Brochures

email: info@crownpolymers.com

CrownPro™ SparkShield & CrownLiquidCopper™ Primer

Product 353 & 352

Reliable ESD Protection

Recommended Use: For floor and wall environments where the danger of static electricity is possible.

System Description: When dependable ESD protection is needed, CrownPro SparkShield, static dissipating floor system, is a classic standard and is now improved with a new primer... CrownLiquidCopper. Complies with NFPA Static Electricity Dissipative Standards.

CrownPro™ ElectricShield

Product 355

Conductive Floor Protector

Recommended Use: For environments with danger of ignition due to explosive volatile chemicals, mixtures of gas, vapor, spray or fine dust.

System Description: 1/8 to 1/4 inch thick. Conductive epoxy polymer concrete with a conductive top coat. 100% solids. Broadcast, slurry broadcast or trowelable. Complies with NFPA Standards. Available in 10 colors.

CrownEncap™

A Waterproofing, Strengthening System

System Description: An EPC Overlay providing increased live load capabilities and hazardous material encapsulation.



CrownPro™ SparkShield & CrownLiquidCopper™

www.crownpolymers.com

CrownWear™ 20 EPC-LTC

Product 202

Low Temp Cure Down To 20°F (-7°C)

Recommended Use: For freezers, cold storage or outdoor environments.

System Description: Two component, 100% solids, epoxy polymer concrete.

CrownPro™ AcidShield

Product 350

Superior Acid Protection

Recommended Use: For environments where acid spills occur and acid resistance is desirable.

System Description: Two component, 100% solids, low odor, novolac epoxy coating or epoxy polymer concrete.

CrownPro™ EPC TempShield

Product 356

Protects Up To 450°F (232°C)

Recommended Use: Protects concrete substrates from hot and cold changing environments and withstands thermal shock without stressing the substrate.

System Description: A broadcast or trowelable 100% solids, low odor, non-shrink epoxy polymer concrete overlay that becomes a monolithic part of the concrete.



CrownPro™ AcidShield

 Indicates a Crown Polymers Exclusive

Improve Floor Longevity With Crown Polymers® Support Products

Vapor and Moisture Protection



CrownCote™ Vapor Barrier

CrownCote™ Vapor Barrier

Product 303

Stop Vapor Transmission

Recommended Use: To stop vapor transmission through concrete floors when overlaid with hardwood floors, tile, carpet and Crown Polymers overlays.

Product Description: Ultra low viscosity modified 100% solids, non-solvent epoxy. Penetrates into the concrete, seals off, and prevents vapor transmission to the surface. Warranty available.

CrownFlex™ Joint Sealers

Load Bearing Joint Sealers

Recommended Use: To fill, seal and provide a smooth load bearing transition across the floor contraction or construction joint surface, so not to cause stress or spalling to the adjacent concrete surfaces. Used with seamless Crown Polymers floor and deck overlays.

Product Description: CrownFlex Joint Sealers are a family of modified epoxy formulas that provide specific protection to concrete joints and structure.

CrownFlex™ Joint Sealer Gel Grade

Product 501 Non-sag consistency

CrownFlex™ Joint Sealer

Product 505 Pourable or Pumpable

CrownSilver™

Safety and Hygiene

Product Description: Antimicrobial CrownSilver provides sanitary protection using silver-ion technology to control the growth of bacteria and fungi on floor surfaces. It is recommended that CrownSilver be added to all overlays and top coats when these conditions exist.

CrownFlex™ Membrane

Product 304

Adds Extra Moisture Protection

Recommended Use: Use for additional waterproofing as a neat material under the polymer overlay wear surface when condensation, dew, or free moisture within the concrete or wood substrate could be present. Typical applications are mechanical rooms, parking decks, ramps and balconies.

Product Description: Two component, low modulus, 100% solids, epoxy that adheres to the substrate surface.

CrownFlex™ 500 & CrownFlex™ EVA

Crack, Expansion Joint & Water-Stop

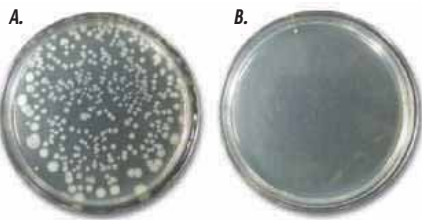
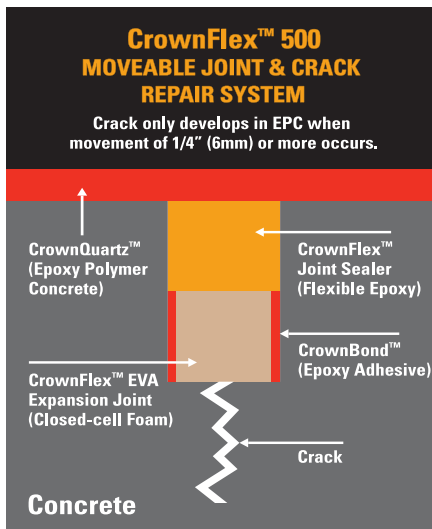
Recommended Use: Waterproof seal for expansion and isolation joints, including moving cracks in concrete. Stops water transfer and allows natural thermal movements or vibrations above and below the water line.

System Description: A composite of CrownFlex EVA, closed cell pre-formed foam, and CrownFlex Joint Sealer, a flexible epoxy. Each joint is designed to provide approximately a 100% safety factor in movement and waterproofing.

Crack Repair, Patching, Regrading and Leveling Product Systems

Crown Polymers has numerous crack repair systems that are either low pressure pumped or gravity poured. These products are also used for anchor and bolt grouting, rock grouting and hand rail grouting. Complies with ASTM C881.

For more data on Epoxy Polymer Concretes, Coatings or Crack Repair see Crown Polymers' Product Data Sheets.



Escherichia coli Test Results.

A. Control Sample E-Coli 24 hours no treatment.

B. CrownSilver™ E-Coli 24 hours 99.999% control.

Note: Staphylococcus aureus: Same results.



All our colors are Green.™

Call for the location of your nearest Crown Polymers representative.

888.732.1270 Toll Free



Crown Polymers, LLC.
11111 Kiley Drive
Huntley, Illinois 60142

info@crownpolymers.com
www.crownpolymers.com

847.659.0300 Phone
847.659.0310 Facsimile
888.732.1270 Toll Free

Limited Warranty Crown Polymers, LLC warrants its products to be free of manufacturing defects, to be of good quality, and that they will meet Crown Polymers current published physical properties when applied in accordance with Crown Polymers written directions and tested in accordance with ACI, ASTM and Crown Polymers Standards. Product proved to be defective will be replaced. There are no other warranties by Crown Polymers, LLC of any nature whatsoever, expressed or implied, including any warranty of merchantability or fitness for a particular purpose in connection with this product. Crown Polymers, LLC shall not be liable for damages of any sort, including remote or consequential damages, resulting from any claimed breach of any warranty, whether expressed or implied, from any other cause whatsoever. Crown Polymers will not be responsible for use of this product in a manner to infringe on any patent held by others.

All registered trademarks are of Crown Polymers, LLC unless otherwise noted. © Crown Polymers, LLC, 2009-2010 Printed in the USA