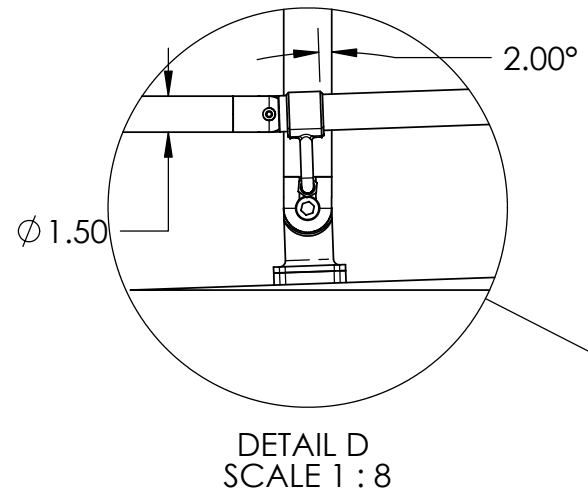
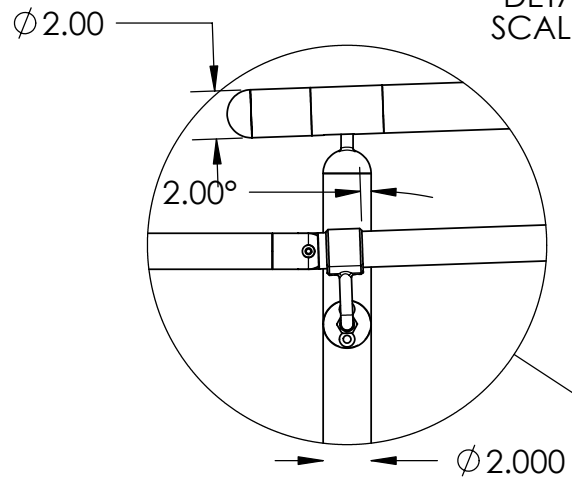


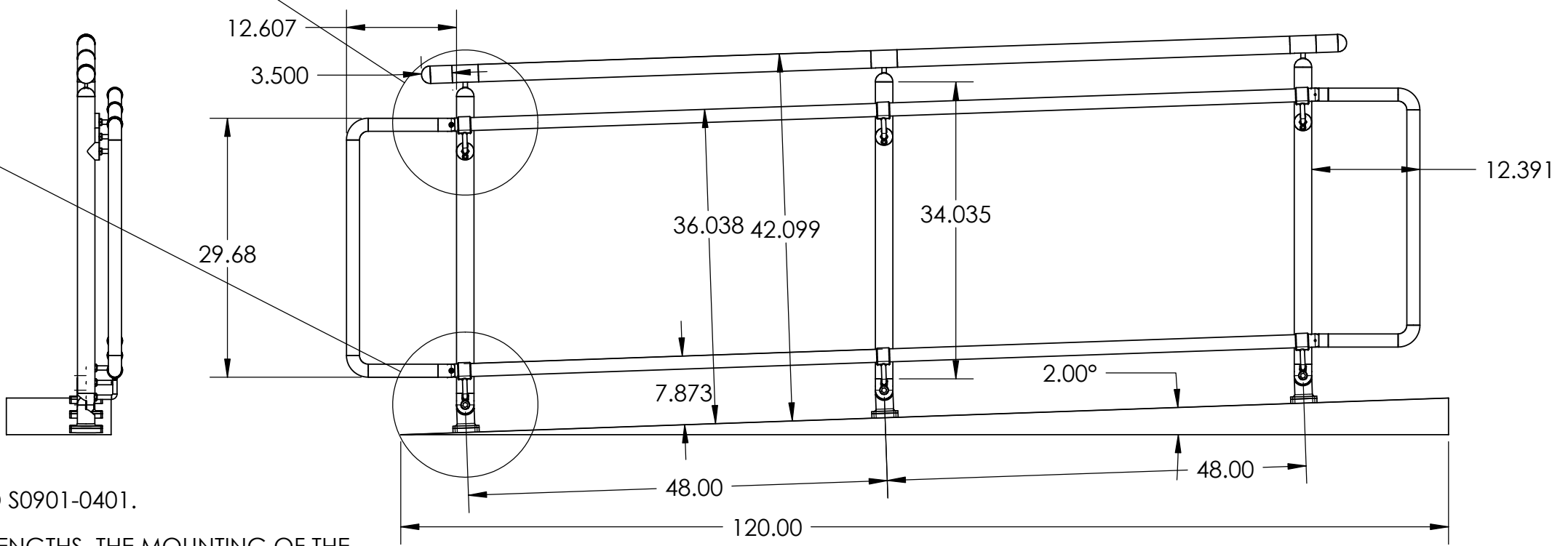
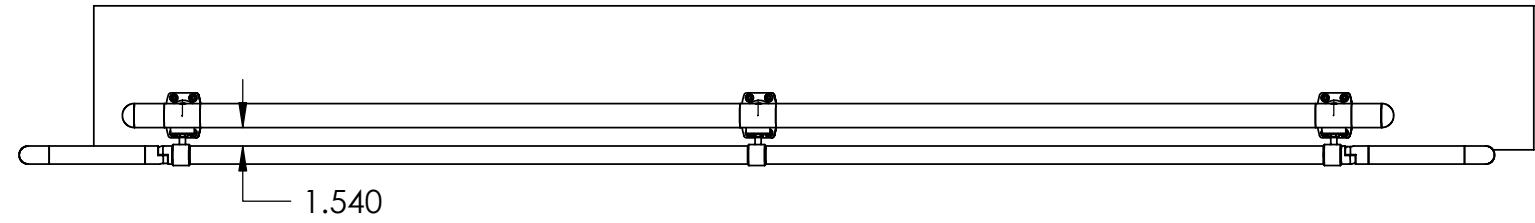
THE INFORMATION CONTAINED IN THIS DRAWING IS THE SOLE PROPERTY OF SUNCOR STAINLESS. ANY REPRODUCTION IN PART OR WHOLE WITHOUT THE WRITTEN PERMISSION OF SUNCOR STAINLESS IS PROHIBITED.

REVISIONS			
REV.	DESCRIPTION	DATE	APPROVED

DETAIL C
SCALE 1 : 8



DETAIL D
SCALE 1 : 8



NOTES:
DISCOVERED FROM LAYOUT:

HAND RAIL TO 42", GRAB RAIL TO BE 34 TO 38".

RAIL BASE MALE PORTION WILL BE THREADED TO HOLD S0901-0401.

IN ORDER TO MAKE ALL TUBING MAINTAIN THE SAME LENGTHS, THE MOUNTING OF THE S0901-1401 (S0901-0405) MUST BE FIXED APPROXIMATELY AS SHOWN. BECAUSE OF THIS, THE HANDRAILS THAT ARE PARRALLEL TO THE MOUNTING SURFACE WILL HAVE A VARYING HEIGHT THROUGH A RANGE OF ANGLES.

THE VERTICAL GRAB RAIL COMPONENTS ARE ALL THE SAME LENGTHS. HOWEVER AS MENTIONED ABOVE, DISTANCE FROM THE VERTICAL POST WILL VARY WITH A CHANGE IN ANGLE.

FIXED DIMENSIONS ARE THE CENTER TO CENTER OF THE RAIL BASES, MEASURED ON A SLOPE NOT IN THE X AXIS.

ALL "ACCESS RAIL" SPECIFIC COMPONENTS ARE THE "S0940" PART NUMBER FAMILY.

UNLESS OTHERWISE SPECIFIED DIMENSIONS ARE IN INCHES TOLERANCES ARE:			CAD GENERATED DRAWING DO NOT MANUALLY UPDATE	
FRACTIONS	DECIMALS	ANGLES	APPROVALS	DATE
±1/64"	.X ±0.05 .XX ±0.02 .XXX ±0.005	±1/2°	DRAWN J.STORRER	01-16-08
MATERIAL	316 SS		CHECKED	
FINISH			RESP ENG	
			MFG ENG	
			QUAL ENG	
DO NOT SCALE DRAWING				

SUNCOR
Stainless, Inc.
Plymouth, MA 02360

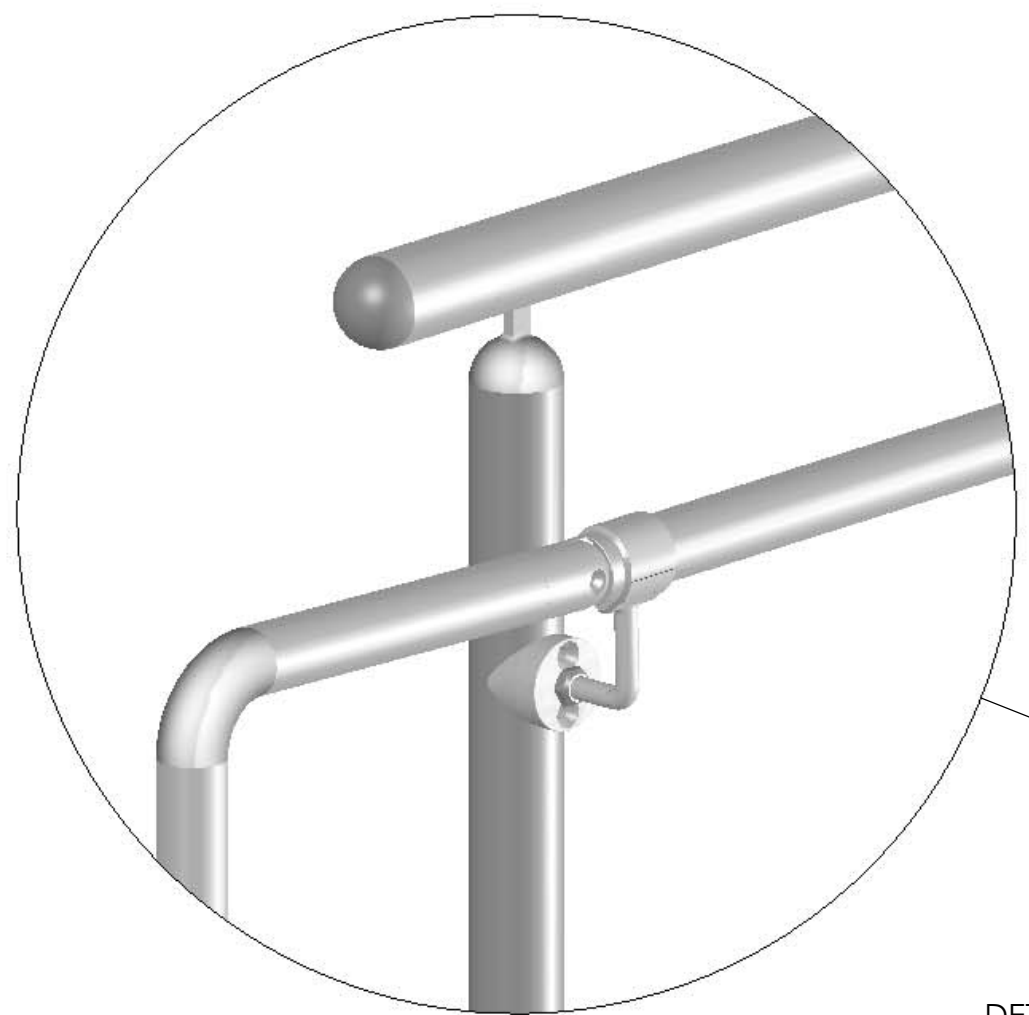
**ACCESS RAIL LAYOUT
VARIOUS ANGLES**

SIZE B DWG. NO. XXXXXXXXXX REV. A

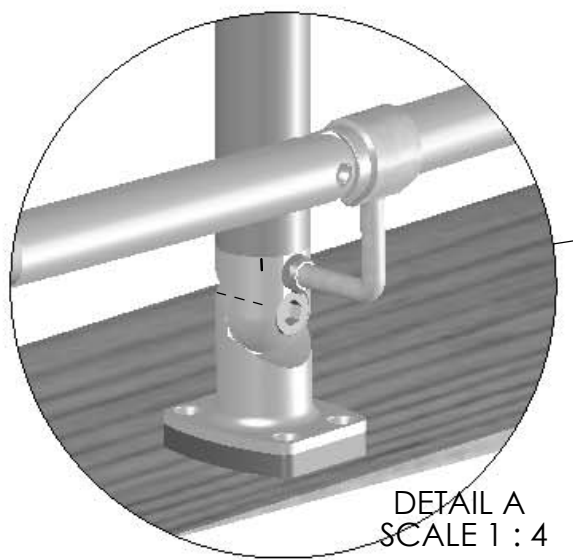
CAD FILE: XXXXXXXXXX SHEET 1 OF 1

THE INFORMATION CONTAINED IN THIS DRAWING IS THE SOLE PROPERTY OF SUNCOR STAINLESS. ANY REPRODUCTION IN PART OR WHOLE WITHOUT THE WRITTEN PERMISSION OF SUNCOR STAINLESS IS PROHIBITED.

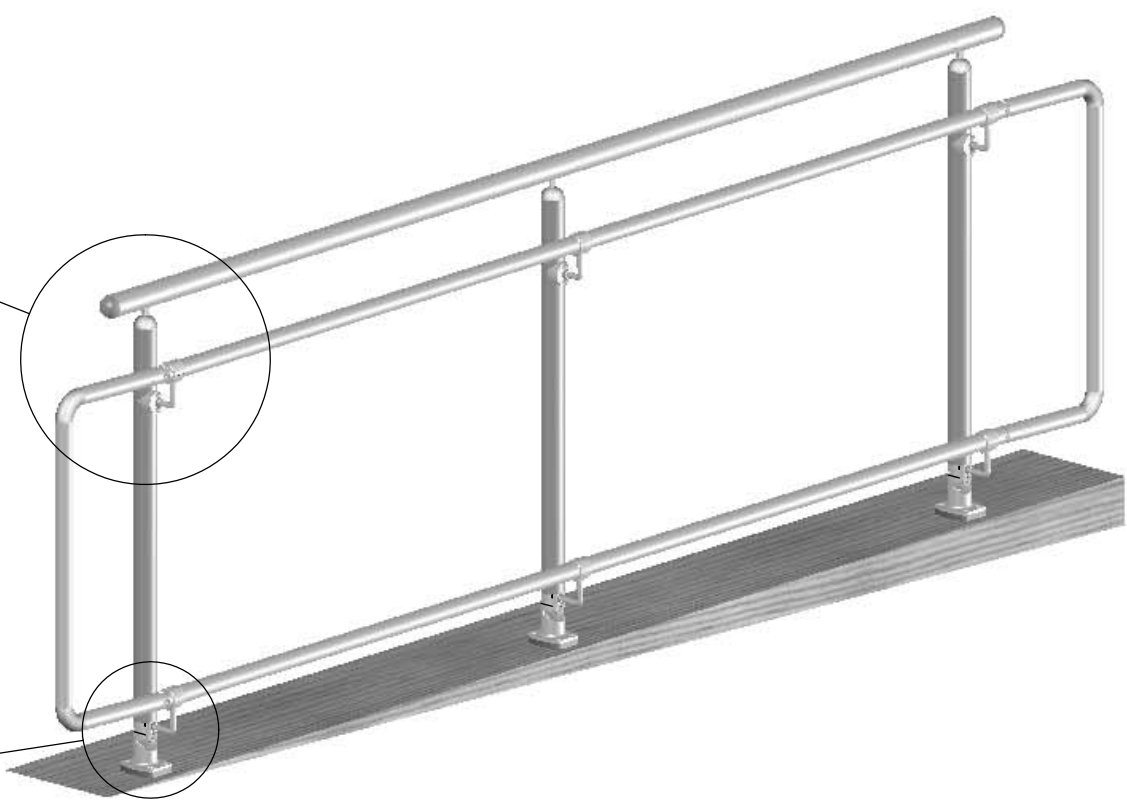
REVISIONS			
REV.	DESCRIPTION	DATE	APPROVED
1	Release for production	10Sept00	




DETAIL B
SCALE 1 : 4



DETAIL A
SCALE 1 : 4



UNLESS OTHERWISE SPECIFIED DIMENSIONS ARE IN INCHES TOLERANCES ARE:			CAD GENERATED DRAWING DO NOT MANUALLY UPDATE		 SUNCOR Stainless, Inc. Plymouth, MA 02360
FRACTIONS	DECIMALS	ANGLES	APPROVALS	DATE	
±1/64"	.X ±0.05 .XX ±0.02 .XXX ±0.005	±1/2°	DRAWN J.STORRER	01-16-08	
MATERIAL	316 SS		CHECKED		ACCESS RAIL LAYOUT VARIOUS ANGLES
FINISH			RESP ENG		
DO NOT SCALE DRAWING			MFG ENG		
			QUAL ENG		SIZE B DWG. NO. XXXXXXXXXXXX REV. 1
				CAD FILE: XXXXXXXXXXXX	SHEET 1 OF 1