

32 31 00/ELI
BuyLine 7422



FENCE PRODUCTS, INC.

The Manufacturer

Elite Aluminum Fence Products was established in 1986. We are a high quality minded and service oriented company. The staff has over 50 years of fence experience with wood, chainlink and ornamental fences. Elite Aluminum works everyday to make sure that it's product line is the best available. Our customer service department is available to answer any questions you may have regarding materials or installation. Fence samples or shop drawings may be requested by calling toll free 1-800-783-1331.

Application

Elite's line of ornamental fence is an excellent choice for security and protection while being the perfect neighbor friendly fence.

Residential

The residential fence is constructed of 1-1/8" x 1" rails, 5/8" pickets and 2" x 2" or 2-1/2" x 2-1/2" post. Our horizontal rails are engineered for maximum strength.

Lifeguard

2-Rail, 4 ft. high fence is ideal for swimming pools and meets 1996 BOCA pool code. Constructed of 1-1/8" x 1-3/4" rails, 3/4" square pickets and 2" x 2" or 2-1/2" x 2-1/2" post.

Commercial

The commercial fence is constructed of 1-1/8" x 1-3/4" rails, 3/4" square pickets and 2" x 2" or 2-1/2" x 2-1/2" post.

Industrial

The industrial fence is constructed of 1-5/8" x 1-5/8" rails, 1" x 1" pickets, 2-1/2" x 2-1/2", 3" x 3" or 4" x 4" post.

Heavy Industrial

The heavy industrial fence is constructed of 1-5/8" x 1-5/8" rails with enclosed bottom and no exposed screws, 1" x 1" pickets, 3" x 3" post or 4" x 4" post.

Gates

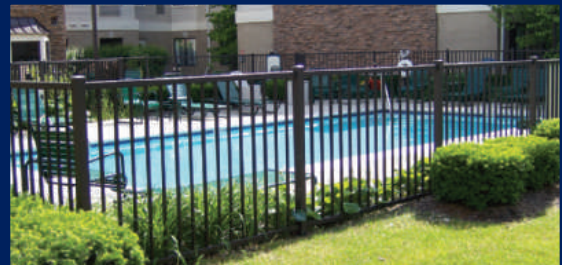
Standard gates are available to match each style and grade of fence. All gate leafs will have a diagonal brace. Gate leafs over 6 ft. shall be V-braced. Standard hinges and latch are furnished with each gate. We also offer a full line of custom gates including estate gates and curve top gates.



EFS-10 Commercial Spear Top



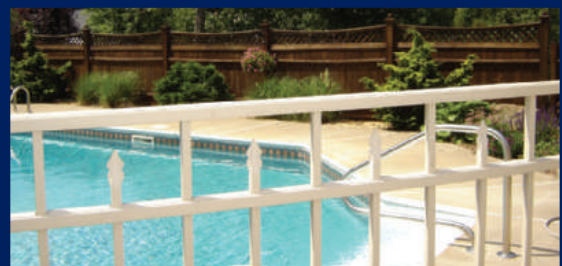
EFF-20 Commercial Custom Designed Flat Top



Lifeguard



EFS-15 Staggered Spear



EFF-25 Flat Top w/Spear

Materials

(A) Aluminum Extrusions: The fence components are of Alloy 6005-T5 with a minimum yield strength of 35,000 PSI.

(B) Screws: The fence is assembled with 410 stainless steel screws with a zinc & yellow chromate finish for superior corrosion resistance. Screw heads are painted to match the finish of the fence.

(C) Hinges: Standard hinges are constructed of aluminum extrusions. We also offer a full line of heavy duty hinges & latches including self closing and self latching hardware to meet pool codes.

(D) Accessories: Latches, Finials, Circles, Butterfly Scrolls and Caps are of zinc die cast or cast aluminum.

Finish

The fence materials shall be coated with a TGIC polyester powder-coat finish. In certified testing this finish has been proven to meet or exceed AAMA 2604 specifications.

Colors

Residential Fence is available in seven standard colors – White, Black, Walnut Brown, Beige, Quaker Bronze, Hartford Green and Sandstone.

Commercial Fence is available in six standard colors – White, Black, Beige, Quaker Bronze, Hartford Green and Sandstone.

Industrial Fence is available in seven standard colors – White, Black, Walnut Brown, Beige, Quaker Bronze, Hartford Green and Sandstone.

Heavy Industrial Fence is available in two standard colors – Black and Quaker Bronze.

Custom colors available in all grades of material.

Warranty

Elite Aluminum Fence Products offers a Limited Lifetime Warranty on all materials and workmanship as well as the finish of the fence against cracking, peeling, chipping and corroding.

Installation Instructions

1. Establish fence line and install string.
2. Start at end or corner marking and drilling holes
6' 3/4" center to center for residential with 2" post or
6' 1-1/4" center to center for residential with 2-1/2" post,
6' 4-1/2" center to center for commercial with
2" post or 6' 5" center to center for commercial with
2-1/2" post. The industrial grade with 2-1/2" post is
5' 11-1/2" center to center and 6' with 3" post.
3. Install end or corner post in hole. Level post and pour concrete around the post. Leave concrete at least 2 inches below grade.
4. Install horizontal runners of section in prepunched holes. Fasten with screws.
5. Install post on the other end of the section, pour concrete around post.
6. Continue on to the end of the line. Check post for height and alignment after 60 feet.



EFS-55 with Gold Quad Finials



EFF-20 with Optional Circles



EFF-20 Custom Color Marine Blue



Lifeguard Flat Top 2-Rail

PROUDLY MADE IN AMERICA





EFF-25 Curved Top Gate w/Optional Tris



EFS-10 Estate Gate w/Optional Tris and Circles

	Residential	Commercial	Industrial	Heavy Industrial
Post	2" x 2" x .060 Wall*	2" x 2" x .060 Wall*	2-1/2" x 2-1/2" x .100 Wall	2-1/2" x 2-1/2" x .100 Wall
	2" x 2" x .080 Wall	2" x 2" x .080 Wall	3" x 3" x .125** Wall	3" x 3" x .125 Wall**
	2" x 2" x .125 Wall	2" x 2" x .125 Wall	4" x 4" x .125/.250 Wall	4" x 4" x .125/.250 Wall
	2-1/2" x 2-1/2" x .100 Wall	2-1/2" x 2-1/2" x .100 Wall	6" x 6" x .125/.250 Wall	6" x 6" x .125/.250 Wall
Horizontal Rails	1-1/8" x 1"	1-1/8" x 1-3/4"	1-5/8" x 1-5/8"	1-5/8" x 1-5/8"
Enclosed Bottom	N/A	N/A	N/A	Yes
Side Walls	.082	.082	.100	.100
Top Walls	.062	.062	.070	.070
Pickets	5/8" x 5/8" x .050 Wall	3/4" x 3/4" x .050 Wall	1" x 1" x .062 Wall	1" x 1" x .062 Wall
Picket Spacing	3-13/16" or 1-5/8"	3-31/32" or 1 5/8"	4" or 1-1/2"	4" or 1-1/2"
Heights	3, 3 1/2, 4, 4 1/2, 5, & 6 Feet	3, 3 1/2, 4, 4 1/2, 5, & 6 Feet	3, 3 1/2, 4, 5, 6, 7, 8 & 10 Feet	3, 3 1/2, 4, 5, 6, 7, 8 & 10 Feet
Colors	All Colors	All Colors except Walnut Brown	All Colors	Black, Quaker Bronze

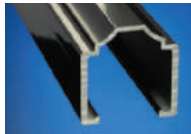
Screws: 410 Stainless Steel corrosion resistant. The heads are coated with zinc and yellow chromate, then painted to match the color of the fence.

Panels: Fully assembled 6 feet in length plus or minus one inch.

Colors Available: Black, Quaker Bronze, White, Walnut Brown, Beige, Hartford Green & Sandstone. Custom colors available upon request.

*Not available in Walnut Brown, Beige or Hartford Green

**Not available in Walnut Brown



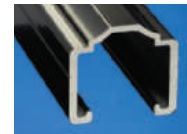
Residential



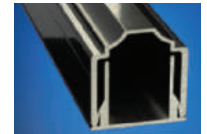
Residential Series
No Exposed Screws



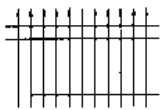
Commercial



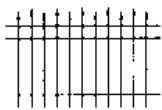
Industrial



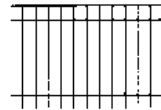
Heavy Industrial
No Exposed Screws



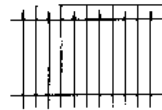
EFS-10



EFS-15



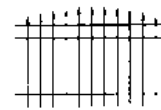
EFF-20



EFF-25



EFS-50



EFS-55



Lifeguard



Spear Point



Quad Finial



Tri-Finial



Fleur-De-Lis



Circles



Butterfly Scrolls



Floor Flange



Welded Plate



Rail End



Swivel Rail End

see us at
Sweets.com

PROUDLY MADE IN AMERICA



Manufactured by:

Elite Fence Products, Inc. • 2551 Joy Blvd. • Harrison Twp., MI 48045 • Phone (586) 468-4448
Toll-Free 1-800-783-1331 • Fax (586) 468-4884 • www.elitefence.com