

## EFCO Optional Hardware

### LOCKING HARDWARE



#### ADAMS RITE MS+1890 DEADLOCK/LATCH LOCK

##### Features

- Aluminum faceplate
- Five-ply laminated steel hook bolt with  $\frac{13}{16}$ " throw
- Center-ply Alumina-Ceramic core defeats hacksaws, including rod-type "super" hacksaws
- Two-point lock in one-lock housing
- Upper hook bolt activated by key cylinder or thumb turn
- Lower bolt spring-loaded latch operated by paddle or lever
- Accepts all standard  $\frac{1}{2}$ " mortised cylinders or thumb turns with MS cams
- Key can be removed only when lock in positively locked or unlocked position
- Both locking points can be retracted for free traffic flow
- Retracting MS hook bolt and activating latch lock will permit "exit only" traffic
- BHMA TYPE E82101

##### Application

- Single doors or pairs of doors needing deadlocked maximum security after hours plus traffic-control convenience during business day

##### Finish

- Aluminum faceplate available in 628 satin aluminum and 313 bronze anodize



#### ELECTRIC STRIKE

##### FEATURES

- Non handed fully reversible for LH or RH application
- Non fail safe function
- Operates on 24V DC tamper resistant up to 1,400 lbs.
- May be jamb mounted for single doors or mounted to inactive leaf for pair of doors
- BHMA E09321
- UL listed

##### Application

- Use with 4510 latch lock to allow remote traffic/door control; anticipated duty (intermittent or continuous) should be specified for proper operation

##### Finish

- US28 (628) satin aluminum and hardcolor 313 bronze



#### SARGENT MORTISE CYLINDER

##### FEATURES

- Standard  $\frac{1}{2}$ " diameter x  $1\frac{1}{8}$ " long mortised cylinder with 6 pins
- Furnished with standard  $\frac{1}{2}$ " cylinder ring and standard MS type cam
- Key operated only and furnished with Schlage "C" keyway

##### Application

- Use with all Adams Rite locks

##### Finish

- US26D dull chrome and 10B dull bronze oil-rubbed



## EFCO Optional Hardware

### PANIC HARDWARE

LOCKS



#### VON DUPRIN 3347 CONCEALED VERTICAL ROD PANIC

##### Features

- Concealed vertical rod touch-bar panic exit device projects only  $3\frac{13}{16}$ " from face of door
- Both top and bottom locking rods completely concealed in door stile
- Pullman-style top latch and hardened-steel bottom bolt
- Depressing touch bar releases bottom bolt and top latch permitting egress without key
- Upon closing, top latch re-engages strike securely and frees bottom bolt to engage threshold and lock door from exterior
- Panic can be deactivated (dogged down) with allen screw in touch bar
- Any standard  $1\frac{1}{2}$ " diameter rim cylinder can be used
- Eliminates removable mullion obstruction at pair of doors
- UL 305 listed
- Conforms to ANSI/BHMA 156.3 GRADE 1, TYPE 6, FUNCTIONS 01, 02, 05, 06, 08, 09, AND 12

##### Application

- Can be used on all EFCO series single and pairs of doors in areas of high and abusive traffic

##### Finish

- US26D satin chrome and 313 bronze anodize

#### VON DUPRIN 33 RIM PANIC

##### Features

- Rim touch-bar panic exit device projects only  $3\frac{13}{16}$ " from face of door
- Latch bolt in rim of touch-bar housing, engaging adjustable strike, provides locking action
- Depressing touch bar unlocks device and permits egress
- Bolt re-engages strike and locks from exterior when door closed
- Can be deactivated (dogged down) with turn of allen screw in touch bar
- Optional lever trim available
- Removable mullion required when using this panic on pairs of doors
- UL 305 listed
- Conforms to ANSI/BHMA 156.3 GRADE 1, TYPE 4, FUNCTIONS 01 through 06, 08, 09, 11, and 12

##### Application

- Can be used on all EFCO series doors in areas of high and abusive traffic.  
Removable mullion is required on door pairs.

##### Finish

- US26D satin chrome and 313 bronze anodize

#### VON DUPRIN 5754 REMOVABLE MULLION

##### Features

- Top and bottom mounting brackets
- Adjustable mortised strikes
- Security clips guard against door being pried away from mullion

##### Application

- For use on door pairs with rim panic.

##### Finish

- US26D satin chrome and 313 bronze anodize

## EFCO Optional Hardware

### ULTRALINE HARDWARE

#### ULTRALINE PUSH/PULL SET

##### Features

- 1" diameter solid wire push bar
- Offset pull is 9" center to center, has an overall offset of 3 3/4", and projects 3 1/4" from face of stile
- Straight pull is 9" center to center and projects 3 1/2" from face of stile
- Securely attached by concealed screw studs

##### Application

- For use with single-acting doors only

##### Finish

- Clear or bronze anodize, US32 Bright Stainless Steel, US32D Satin Stainless Steel

##### Express Finish

- Clear or bronze anodize only



#### ULTRALINE PUSH/PUSH SET

##### Features

- 1" diameter solid wire push bar
- Back-to-back mounting
- Projection of interior and exterior bar is 2 1/4" at lock stile
- Push bars taper to hinge stile where projection is only 1"
- Securely attached by concealed screw studs and thru-bolt mounting

##### Application

- For use with double-acting doors only

##### Finish

- Clear or bronze anodize, US32 Bright Stainless Steel, US32D Satin Stainless Steel

##### Express Finish

- Clear or bronze anodize only



#### ULTRALINE OFFSET PANIC PULL

##### Features

- Standard 1" diameter solid wire pull, 9" center to center, with overall offset of 4"
- Projects 2 1/2" from face of stile
- Securely attached by concealed screw studs
- Optional thru-bolt mounting available

##### Application

- Available as optional pull handle for panic device doors

##### Finish

- Clear or bronze anodize, US32D satin stainless, and US10B oil-rubbed bronze

##### Express finish

- Clear or bronze anodize only





## EFCO Optional Hardware

### DOOR STOPS HARDWARE

DOOR STOPS



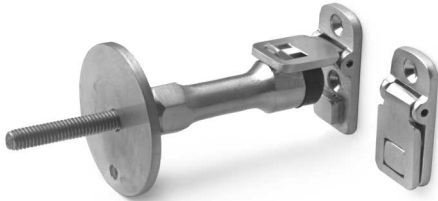
#### FLOOR-MOUNTED HOLDER

##### Features

- Floor-mounted manual-type door holder
- Heavy-duty cast bronze
- Matching strike features unique hinged hook that engages holder when lifted
- Door is by raising hook, then hook drops down flush with strike plate
- Sturdy self-threading rubber bumper with offset shoulder and threaded stud with expansion shields
- Furnished with 3/8" projection
- Conforms to ANSI/BHMA 156.16, L11371

##### Finish

- US26D satin chrome plated and US10B satin oxidized bronze



#### WALL-MOUNTED HOLDER

##### Features

- Wall-mounted manual-type door holder
- Heavy-duty cast bronze
- Matching strike features unique hinged hook that engages holder when lifted
- Door released and hook drops down flush with strike plate by raising hook
- Sturdy self-threading rubber bumper with offset shoulder and threaded stud with expansion shield
- Furnished with 3/8" projection
- Conforms to ANSI/BHMA 156.16, L11351

##### Finish

- US26D satin chrome plated and US10B satin oxidized bronze



#### DROP ARM HOLDER

##### Features

- Door-mounted manual-type door holder
- Heavy-duty cast bronze
- Simple hold and release can be activated with foot
- Round non-marring rubber shoe with corrugated bottom provides secure grip and easy to replace when worn
- Conforms to ANSI/BHMA 156.16, L11381

##### Application

- Can be used on all doors with door-to-floor clearance up to 2"

##### Finish

- US26D satin chrome plated and US10B satin oxidized bronze

# EFCO Optional Hardware

## CLOSERS HARDWARE

### LCN 2030 CONCEALED OVERHEAD CLOSER

#### Features

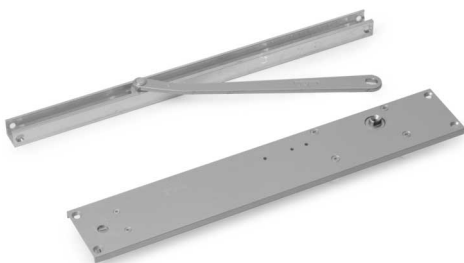
- Heavy-duty single-acting closer
- Hydraulic spring control with rack-and-pinion operation
- Separate controls for closing, latching speed, and back-check adjustments
- Concealed arm and slide track mounted into top door rail
- Doors on butt hinges open 180°, trim permitting
- Doors on offset pivots open 115°, trim permitting
- UL listed
- Conforms to ANSI/BHMA 156.4 GRADE 1

#### Application

- Can be used on all EFCO series doors hung on butt hinges or offset pivots and requires 1 $\frac{3}{8}$ " minimum web mortise

#### Finish

- Clear and dark bronze



### LCN 4041 SUPER SMOOTHEE SURFACE-MOUNTED CLOSER

#### Features

- Heavy-duty double-lever arm closer
- Spring and hydraulic powered rack-and-pinion operation
- Closer spring power is field adjustable over wide range to meet various power requirements
- Field-adjustable back-check cushions opening swing prior to 90° in all applications
- On inswing doors, closer mounted to top door rail with arm attached to frame (18PA adaptor plate required when top door rail height is less than 5 $\frac{3}{16}$ " )
- On outswing doors, closer mounted to transom bar/header with arm attached to top door rail (18G adaptor plate required for narrow 1 $\frac{3}{4}$ " frames)
- UL listed for self-closing doors without hold-open
- Conforms to ANSI/BHMA 156.4 GRADE 1

#### Application

- Designed for institutional and other high-traffic applications; suitable for areas of medium traffic

#### Finish

- Clear and dark bronze



### RIXSON 27 CONCEALED FLOOR CLOSER

#### Features

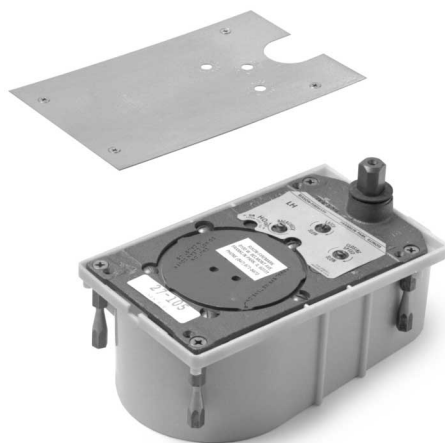
- $\frac{3}{4}$ " offset single-acting handed floor closer
- Accommodates doors up to 450 pounds
- Independent valves for closing, latching, and back-check adjustments
- Positive dead stop prevents door from swinging beyond desired opening degree
- Adjustable spring tension
- Rixson 180 top offset pivot is provided as standard
- Conforms to ANSI/BHMA 156.4 GRADE 1, TYPE C06041

#### Application

- Use with offset pivots only; doors in high-traffic areas or over 7'-6" tall require intermediate pivot

#### Finish

- US26D satin chrome plated and US10B satin oxidized bronze





## EFCO Optional Hardware

### CLOSERS HARDWARE

CLOSERS



#### RIXSON 30 CONCEALED FLOOR CLOSER

##### Features

- Center-hung double-acting nonhanded floor closer
- Accommodates doors up to 200 pounds
- Adjustable spring tension and closing speed
- Rixson 340 walking beam top pivot is provided as standard
- Opposing adjusting screws in bottom arm align door horizontally toward or away from frame

##### Application

- Designed for use with center pivots only, in medium-traffic areas

##### Finish

- US26D satin chrome plated and US10B satin oxidized bronze



#### DOOR HOLDER

##### Features

- Heavy-duty channel and slide-arm design with offset jamb brackets for improved compatibility with door closers
- Surface mounted to top rail and underside of door header
- Unique design allows for changes in user requirements
- Conversion kits change from standard hold-open to stop-only function or to friction device, if required
- Limits door travel and resists potential forces causing damage to hinging hardware and door
- EXCEEDS ALL CRITERIA FOR BHMA GRADE 1 HOLDERS/STOPS

##### Application

- Can be used on all EFCO series doors when used with concealed or floor closer

##### Finish

- US26D satin chrome plated and US10B satin oxidized bronze