



Series 5XPT Impact Grade Thermal Architectural Grade Sliding Glass Door  
 Series 5FXT Thermal Fixed



CONFIGURATIONS

XO • OX • OXXO • OXOR • OXOL • Fixed

With EFCO's 5XPT sliding glass door, you have an attractive product that continues the tradition of the 5XP by meeting the most stringent weather-related requirements, with the added benefit of thermal performance. Designed for high-rise condominiums and hotels, the 5XPT incorporates the E-Strut® thermal barrier—enhancing energy savings and condensation resistance. It also accommodates glazing up to 1 3/16", allowing a wider range of glazing options and performance.

Even with the very low sill profile, the 5XPT is designed with the latest standards in mind. Intended for use in impact-rated and extreme-weather environments, it provides design flexibility to meet your performance needs. It also has mating fixed frames to round out practically any design configuration. 5XPT Florida Product Approvals 14490.1. 5FXT Florida Product Approvals 12637.1, 12637.2 and 12637.3.

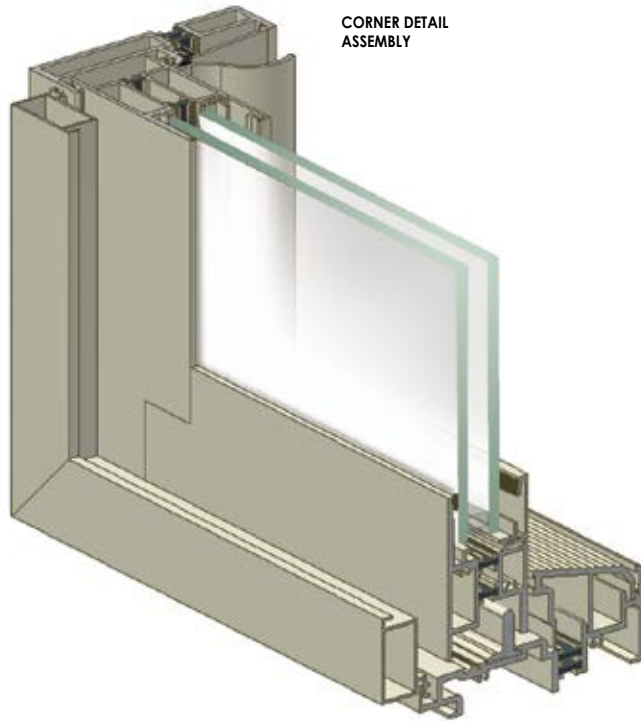
Product advantages

- A minimized threshold height provides a low, user-friendly "step-over" sill.
- The "outside slide" sash design and optional reinforced meeting rails provide smooth operation while maintaining the water and structural performance needed for use in the harshest of weather conditions.
- The 5XPT sets the standard with an industry-leading water pressure resistance of 33 psf.
- The 5XPT is independently tested to meet the latest protocol for small- and large-missile impact testing.
- Glazing-thickness options provide a wide range of design creativity. Whether you need impact, thermal or both, the 5XPT will accommodate glazing up to 1 3/16" thick.
- Non-corrosive stainless steel hardware and integral extruded aluminum pull handles provide long-term durability and wear.
- The raised roller track minimizes maintenance issues by decreasing the effects of debris build-up in the sill.
- Fewer parts and pieces and factory-glazed panels allow for ease of installation for the erector. Like the 5XP, the simplicity of assembly and erection helps ensure a quality finished product.
- Minimized and streamlined sightlines, along with a unique screen design, provide an eye-appealing product.
- Dual-color possibilities include both anodized and painted finishes, which further enhance design creativity.



# Series 5XPT Impact Grade Thermal Architectural Grade Sliding Glass Door

## Series 5FXT Thermal Fixed



### PERFORMANCE DATA

EFCO Corporation Series 5XPT Sliding Glass Door Tests were performed in accordance to the "Standard/specification for Windows, Doors, and Unit Skylights" AAMA/WDMA/CSA 101/1.S.2/A440-05

Note: All performance data is subject to change based on testing recertification and/or revised AAMA testing protocol. Please contact EFCO for latest performance values.

### 5XPT THERMAL SLIDING GLASS DOOR (WITH ALUMINUM REINFORCEMENT)

AAMA RATING (A440-05) .....SGD-AW155  
 AIR INFILTRATION .....<.1 CFM/SF @ 6.24 PSF  
 WATER .....NO LEAKAGE @ 33.0 PSF  
 STRUCTURAL .....155 PSF  
 FORCED ENTRY .....GRADE 20

5XPT THERMAL U-FACTORS*		
CENTER OF GLASS U-FACTOR	CONFIGURATION AND SIZE	
	FIXED** 47" X 59"	FIXED 60" X 108"
0.48	0.60	0.55
0.34	0.50	0.42
0.28	0.46	0.37
0.24	0.43	0.34
0.20	0.40	0.31

5XPT THERMAL U-FACTORS*				
CENTER OF GLASS U-FACTOR	CONFIGURATION AND SIZE			
	XO** 79" X 79"	XO 88" X 96"	XO 96" X 108"	OXO 144" X 108"
0.48	0.63	0.60	0.59	0.54
0.34	0.53	0.50	0.49	0.41
0.28	0.49	0.46	0.44	0.36
0.24	0.47	0.43	0.41	0.33
0.20	0.44	0.40	0.38	0.29

\* Based on NFRC 100  
 \*\*NFRC Gateway size

SERIES 5XPT HARDWARE CHART	STAINLESS STEEL DEAD BOLT	INTERIOR THUMB TURN	INTERIOR AND EXTERIOR EXTRUDED PULL HANDLE	EXTERIOR CYLINDER LOCK W/ INTERIOR THUMB TURN	STAINLESS STEEL ROLLER TRACK COVER	ADJUSTABLE STAINLESS STEEL BALL BEARING ROLLERS	O -Optional
							S -Standard
DOOR HARDWARE	S	S	S	O	S	S	

SERIES 5XPT GLAZING CHART	POLYCARBONATE		GLASS OR PANEL																	
	1/8"	3/16"	1/4"	1/8"	.156**	3/16"	.200**	1/4"	1/4**	1/2"	9/16"	5/8"	3/4"	7/8"	1"	1-1/8"	1-3/16"	1-1/4"	1-1/2"	
MONOLITHIC & INSULATED GLASS											A				A		A			

\*-Obscure glass thickness  
 \*\*-Laminated glass thickness

A-available glazing option  
 Blank - N/A

SERIES 5FXT FIXED GLAZING CHART	POLYCARBONATE		GLASS OR PANEL																	
	1/8"	3/16"	1/4"	1/8"	.156**	3/16"	.200**	1/4"	1/4**	1/2"	9/16"	5/8"	3/4"	7/8"	1"	1-1/8"	1-3/16"	1-1/4"	1-1/2"	
MONOLITHIC & INSULATED GLASS											A				A		A			



# Series 5XPT Impact Grade Thermal Architectural Grade Sliding Glass Door

## Series 5FXT Thermal Fixed

### Frame Construction

The frames have a depth of 5" and are constructed of 6063-T6 aluminum alloy. Nominal material wall thickness for the frame is .125". Corners are of screw spline construction and sealed. See Illustration 1.

### Sash Frame Construction

The sash consists of tubular aluminum members with .100" nominal material wall thickness of 6063-T6 alloy. Corners are of screw spline construction corner keyed and sealed. Weather-stripped interlock at the sash meeting rail(s) is standard. This offers superior weathering and structural performance. See Illustration 2.

### Weather Stripping

All frame to sash contact points are weather-stripped with Schlegel® Q-Lon®.

### Screens

Screen frames are extruded 6063-T6 aluminum alloy with lock. 18 x 16 mesh screens are available in fiberglass and .011" diameter aluminum. 18 x 18 mesh screens are available in .009" diameter stainless steel.

### Hardware

The standard multi-point lock provides superior forced entry resistance. The sash glides on a pair of tandem stainless steel rollers over a raised stainless steel sill track, minimizing the effects of dust and dirt build-up. See Hardware Chart for available hardware types.

### Glazing

Doors are glazed with an extruded aluminum snap-in glazing bead and drive-in wedge gasket. Glazings up to 1-3/16" are accommodated. See the Glazing Chart for the exact size.

### Thermal Barrier

Interior and Exterior frame members are separated with a rigid, structural thermal barrier consisting of 2 glass reinforced polyamide nylon struts mechanically crimped into extruded aluminum raceways.

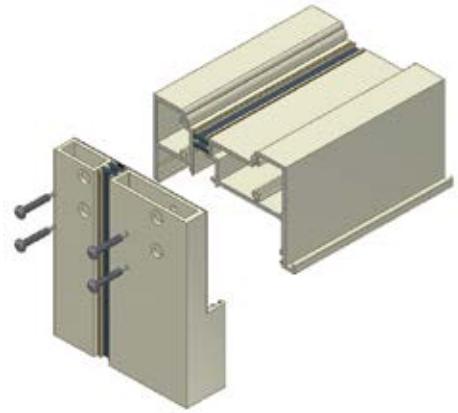


Illustration 1

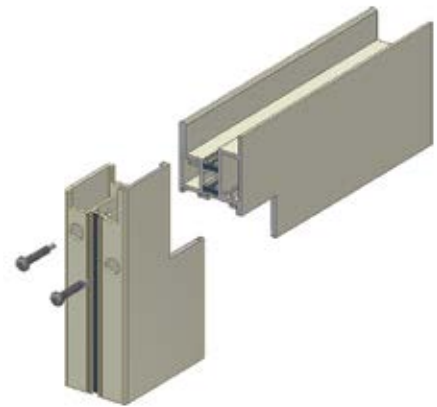


Illustration 2

