

# Windows

EFCO offers an industry-leading range of commercial window systems. In fact, we provide them in all the applications that ensure we'll meet your requirements: hung, projected, sliding and special-purpose.

In each category, EFCO's windows have earned AAMA performance ratings for the most demanding commercial and architectural specifications.

We can also custom-design, engineer and fabricate windows to meet a comprehensive variety of product applications.

## TRIM-ALL™

EFCO's **Trim-All** is an easy-to-install system designed for restoration or replacement applications. Exterior panning and interior trim snaps into place over existing wood or steel frames—eliminating the need for scaffolding or staging, and minimizing post-installation debris.

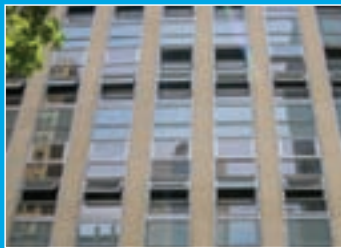


## Projected windows

Products	Frame Depth	Sightline	Glazing	Thermal	AAMA Rating
2600	2"	3-3/16"	Up to 1-1/4"	N	*AP-AW65, C-AW135
2700	2"	3-3/16"	Up to 1-1/4"	Y	*AP-AW65, C-AW135
● 2701	2"	3-5/8"	Up to 1-1/8"	Y	
510	2-7/16"	3-5/16"	Up to 2"	N	*AP-AW60, C-AW135
511	2-7/16"	3-3/4"	Up to 1-1/4"	Y	
510-I	2-7/16"	3-5/16"	Up to 2"	E-Strut™	*AP-AW80, C-AW120
550-I	2-7/16"	3-5/16"	Up to 2"	E-Strut™	*AP-AW100, C-AW80
590	2-7/16"	2-5/8"	1"	Y	F-AW85
593-I	3-1/2"	2-3/8"	1"	E-Strut™	F-AW60
595-I	5"	2-3/8"	1"	E-Strut™	
3901 Fixed	3-1/4"	1-1/2"	Up to 2-7/8"	Y	
3902	3-1/4"	3-1/2"	Up to 2"	Y	*AP-HC100, C-AW100
3903	3-1/4"	3-3/8"	Up to 2"	E-Strut™	*AP-AW90, C-AW100
3904 Fixed	3-1/4"	2-3/8"	Up to 2-7/8"	E-Strut™	
810-I	3-1/2"	3-7/16"	Up to 2"	E-Strut™	*AP-AW100, C-AW100
● 811-I	3-1/2"	2-9/16"	Up to 2-3/8"	E-Strut™	
880-I	3-1/2"	4-1/16"	Up to 1"	E-Strut™	**C-AW120
890-I	3-1/2"	2-3/4"	Up to 1"	E-Strut™	**AP-AW115, C-AW115
2800	4-1/2"	3-1/2"	Up to 1-1/4"	N	*AP-AW90, C-AW80
2900	4-1/2"	3-1/2"	Up to 1-1/4"	Y	*AP-AW90, C-AW80
● 2901	4-1/2"	3-9/16"	Up to 1-1/8"	Y	
● 1325 <sup>1</sup>	3-1/4"	3-1/4"	Up to 1"	E-Strut™	DA-AW135
Shadowline <sup>2</sup>	2-7/16"	1-1/16"	Up to 1"	Y	*C-AW95

\* Project-Out \*\* Project-In <sup>1</sup>Tilt-Turn <sup>2</sup>Zero-Sightline

● Impact Grade



## Engineered to meet virtually any design requirement.

Engineered and tested to meet stringent AAMA standards, EFCO Projected Series windows are available in both Heavy Commercial and Architectural Grade ratings. With available configurations that include project-in, project-out, and casement, they provide egress, ventilation, natural day lighting and window washing functionality to fulfill a wide variety of product applications. By choosing EFCO Projected Series windows, you'll find a selection of frame depths, sightlines, infill thicknesses and performance ratings engineered to meet virtually any design requirement.



WHERE WINDOWS ARE JUST THE BEGINNING



08 51 13/EFC  
BuyLine 3117



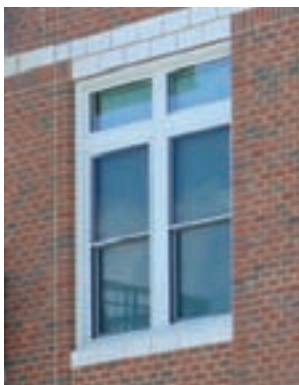
Grant Park Towers  
Minneapolis, Minnesota  
Architect: Opus/Humphreys & Partners



## Hung windows

Products	Frame Depth	Sightline	Glazing	Thermal	AAMA Rating
3400 SH	3-1/4"	2-3/4"	1"	N	H-C65
3410 SH	3-1/4"	2-3/4"	1"	N	H-HC50
3450 SH	3-1/4"	2-3/4"	1"	Y	H-C60
3460 SH	3-1/4"	2-3/4"	1"	Y	H-HC60
3475 Fixed	3-1/4"	1-3/8"	Up to 2"	Y	F-AW75
660 SH	3-7/8"	3-3/16"	Up to 1-1/4"	Y	H-AW50
663 SH	3-7/8"	3-5/8"	Up to 1-1/4"	Y	
670 DH	3-7/8"	3-3/16"	Up to 1-1/4"	Y	H-AW50
671 DH	3-7/8"	3-5/8"	Up to 1-1/4"	Y	
680 SH/Tilt	3-7/8"	3-9/16"	Up to 1-1/4"	Y	H-AW50
690 DH/Tilt	3-7/8"	3-9/16"	Up to 1-1/4"	Y	H-AW50
6600 Fixed	3-7/8"	1-9/16"	Up to 2"	Y	F-AW80
6620 Fixed	3-7/8"	3-1/8"	Up to 1-1/8"	E-Strut™	F-AW80
6621 Fixed	3-7/8"	2-1/4"	Up to 1-1/4"	Y	
672 DH	3-7/8"	4"	Up to 1-1/8"	E-Strut™	H-AW60
675 DH	4-1/2"	3-7/32"	Up to 1-1/4"	Y	H-AW65
676 DH	4-1/2"	3-7/32"	Up to 1-1/4"	Y	H-AW100
6615 Fixed	3-7/8"	1-13/16"	Up to 2"	Y	
6625 Fixed	3-7/8"	1-3/8"	Up to 2"	E-Strut™	
6700 Fixed	3-7/8"	1-13/16"	Up to 2"	Y	
6711 Fixed	3-7/8"	1-5/16"	Up to 2"	Y	F-AW100
6720 Fixed	3-7/8"	1-11/16"	Up to 1"	Y	
6740 Fixed	3-7/8"	1-13/16"	Up to 1-3/8"	E-Strut™	
6750 Fixed	4-1/2"	1-13/16"	Up to 3-1/8"	Y	F-AW90
6755 Fixed	4-1/2"	1-11/16"	Up to 3-1/8"	Y	
6800 Fixed	3-7/8"	1-13/16"	Up to 2"	Y	F-AW95

 Impact Grade



### A flexible design choice.

Count on EFCO to manufacture a comprehensive offering of hung window systems, with a full line of products that includes multiple frame and sightline options and retains Heavy Commercial or Architectural Grade AAMA ratings. Whether the need is ventilation, natural day lighting or both, EFCO hung windows are available with true, internal or external muntins. That makes them a flexible design choice, ideal for historical replication as well as new construction.



WHERE WINDOWS ARE JUST THE BEGINNING

a Pella Company



08 51 13/EFC

BuyLine 3117

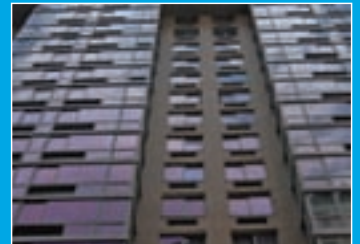
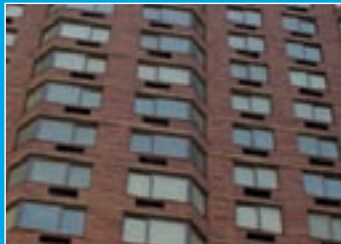


Carver High School  
Atlanta, Georgia  
Architect: Allain and Associates/  
Sizemore Group



## Horizontal sliding windows

Products	Frame Depth	Sightline	Glazing	Thermal	AAMA Rating
3500	3-1/4"	2-11/16"	Up to 1"	Y	HS-AW50
3900 Fixed	3-1/4"	2-11/16"	Up to 1"	Y	FW-AW75
3502	3-1/4"	2-3/4"	Up to 1"	E-Strut™	HS-AW50
3903	3-1/4"	2-3/4"	Up to 1"	E-Strut™	
3503	3-1/4"	3-1/16"	Up to 1"	E-Strut™	HS-AW60
6555	3-7/8"	2-3/4"	Up to 1-1/4"	E-Strut™	HS-AW55
6620 Fixed	3-7/8"	2-3/4"	Up to 1-13/16"	E-Strut™	F-AW80



### Developed to meet your next challenge.

EFCO horizontal sliding windows are designed to meet the most demanding specifications. Available in Heavy Commercial and Architectural Grade ratings, EFCO horizontal sliding windows offer several glazing options and sightlines. Selected thermal versions feature E-Strut™ technology for outstanding thermal performance and dual finish capability.

Although they were often developed to meet a specific need, the distinctive qualities of EFCO sliding windows were eventually recognized by developers, architects, building owners and customers across the nation as an effective choice for their own applications. Today, EFCO provides horizontal sliding windows ranging from standard to impact grade and highly custom.



WHERE WINDOWS ARE JUST THE BEGINNING

a Pella Company



08 51 13/EFC  
BuyLine 3117



Royal Palm  
Naples, Florida



# Our commitment to security

At EFCO, we design many of our products to withstand extreme conditions—whether man-made or weather-related. In fact, we actively maintain research-and-development operations and laboratory testing facilities.

With our impact-resistant products, EFCO recognizes and works toward the industry's accepted standards.

## Impact-grade products

These EFCO products are manufactured in accordance with ASTM 1996 & 1886, which have been adopted along much of America's coastline.

- Storefronts: 525 Series, 526 Series
- Entrances: D200, D300, D500, D318, D518 DuraStile HD
- TerraStile® doors: T351-I, T401-I, T451
- Projected windows: 2701, 811, 511, 2901, 1325
- Hung windows: 663 SH, 671 DH, 6621 Fixed
- Curtain walls: 5600, E-Wall



## Blast-grade products

These EFCO products are tested to ASTM 1642-03, helping ensure that a building and its occupants survive an explosion.

- Projected windows: 2901 Series
- Hung windows: 663 SH
- Curtain walls: 5600 Series



## Ballistic-grade products

Tested to UL 752, these EFCO products provide superior resistance to projectiles—an important feature for security-sensitive locations.

- Storefronts: 401 Series
- Entrances: D200, D300, D500
- Curtain walls: 5600, E-Wall





08 51 13/EFC  
BuyLine 3117



BOK Center  
Tulsa, Oklahoma  
Architect: Cesar Pelli



# Our commitment to the environment

EFCO's environmental stewardship is reflected in a product line composed largely of glass and aluminum—two of the most abundant recyclable materials in the world.

Recycled aluminum is especially productive: it's identical to smelted aluminum, yet produced with only 1/20 of the energy. And it recycles again and again.

We're also committed to energy conservation. Our products deliver excellent thermal performance by incorporating some of the most important innovations, from photovoltaic modules to eco-friendly paints and finishes.

Of course, selected windows, sliding glass doors and curtain walls also feature the E-Strut™ thermal isolator—EFCO's own contribution to our industry's energy-saving technology.



For a complete listing of EFCO products, please visit us online at [efcocorp.com](http://efcocorp.com) or call us at 800.221.4169

