

EFCO Quick Set™ System • Thermal and Non-Thermal Storefront Ribbon System  
 901 - 2" x 4 1/2" • 902 - 2" x 5 1/4" • 903 - 2 1/4" x 3 1/4" • 904 - 2" x 4"



CONFIGURATIONS

Captured Vertical Mullions • Structural Glazed Vertical Mullions

These Quick Set™ systems provide the solution for an economical ribbon storefront system to fit a wide variety of applications. Since it utilizes stick construction, labor costs and installation times are lower. Quick Set is available in thermal and non-thermal framing and various system depths. All EFCO entrances are compatible with Quick Set Systems.

Features

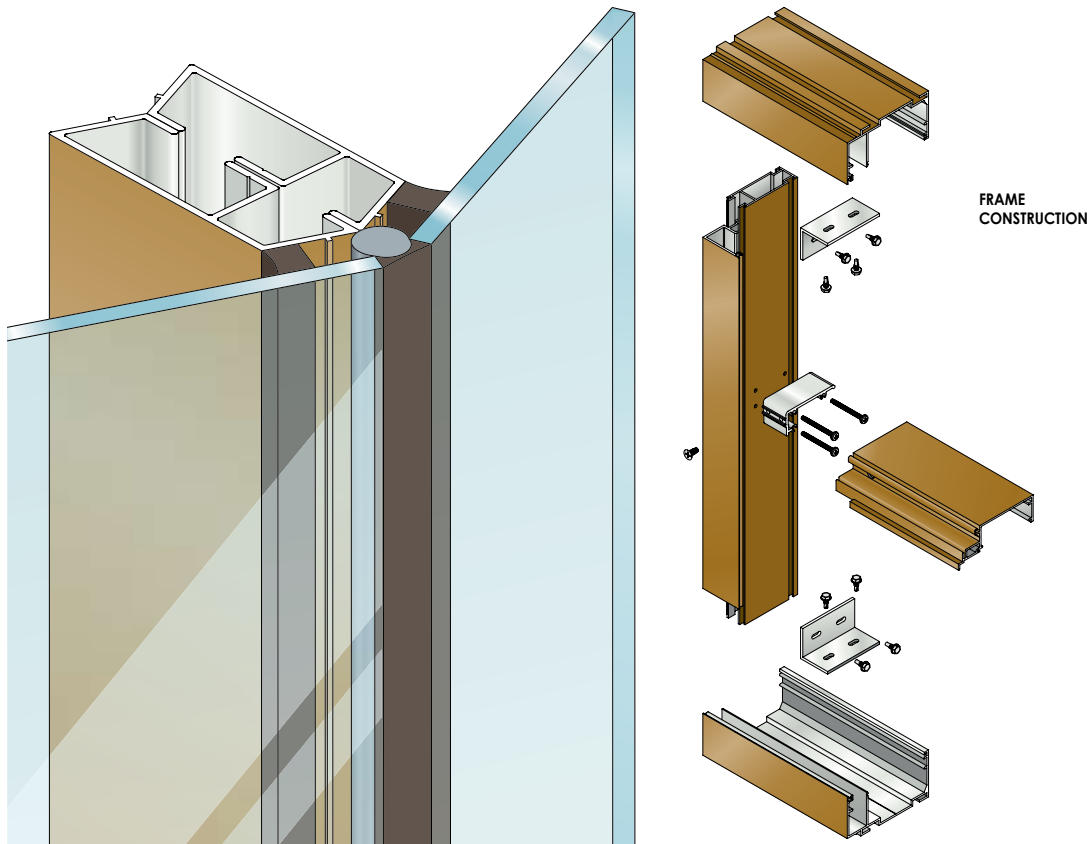
Benefits

Interlocking can system	Facilitates rapid installation
Intermediate verticals locked in place with horizontal covers	Mechanical fasteners are not needed
Structural/Butt glaze mullions	Seamless face
Optional face cap	Provides ribbon wall appearance
Door framing members	Individual interior and exterior finish capability
45°, 90°, and 135° corner mullions	Compatible with all 1 3/4" and 2" EFCO doors
Accommodates up to 1 1/16" glazing	Accommodates multifaceted elevations
EPDM glazing gasket	Flexibility in design requirements for glazing
Accessory line of pocket fillers, vent adaptors, etc.	Dry glazed
Anodized or painted finishes available	Increased product versatility
	Multiple options to answer economic and aesthetic concerns



# EFCO Quick Set™ System • Thermal and Non-Thermal Storefront Ribbon System

901 - 2" x 4 1/2" • 902 - 2" x 5 1/4" • 903 - 2 1/4" x 3 1/4" • 904 - 2" x 4"



## PERFORMANCE DATA

### SYSTEM 901 QUICK SET™

AIR INFILTRATION ..... <.06 CFM/SF @ 6.24 PSF  
 WATER ..... NO LEAKAGE @ 12.0 PSF  
 STRUCTURAL ..... visit MyEFCO at www.efccorp.com

### SYSTEM 902 QUICK SET™

AIR INFILTRATION ..... <.06 CFM/SF @ 6.24 PSF  
 WATER ..... NO LEAKAGE @ 12.0 PSF  
 STRUCTURAL ..... visit MyEFCO at www.efccorp.com  
 CRF FRAME (1503-98) ..... .71<sup>F</sup>  
 CRF-GLASS (1503-98) ..... .71<sup>F</sup>

### SYSTEM 903 QUICK SET™

AIR INFILTRATION ..... <.06 CFM/SF @ 6.24 PSF  
 WATER ..... NO LEAKAGE @ 10.0 PSF  
 STRUCTURAL ..... visit MyEFCO at www.efccorp.com

### SYSTEM 904 QUICK SET™

AIR INFILTRATION ..... <.06 CFM/SF @ 6.24 PSF  
 WATER ..... NO LEAKAGE @ 10.0 PSF  
 STRUCTURAL ..... visit MyEFCO at www.efccorp.com  
 CRF-FRAME (1503.1) ..... 68<sup>F</sup>  
 CRF-GLASS (1503.1) ..... 58<sup>F</sup>  
 U-VALUE (1503.1) ..... 58<sup>F</sup>

A = Estimated values and/or designations  
 B = Non-standard size or configuration  
 C = Dual glazed  
 D = 1" Insulated - 1/4" clear, 1/2" air, 1/4" clear  
 E = 1" Insulated - 1/4" clear (Low Emissivity), 1/2" air, 1/4" clear  
 F = 1" Insulated - 1/4" clear (Low Emissivity), 1/2" argon, 1/4" clear  
 G = 1" Insulated - 1/4" clear, 1/2" air, 1/4" clear (Low Emissivity)

### GLAZING

QUICK SET™ CAN BE INSIDE OR OUTSIDE GLAZED. GLASS IS "DRY GLAZED" WITH A TOP LOAD EPDM GASKET. VERTICAL MULLIONS ARE BUTT GLAZED WITH STRUCTURAL SILICONE TO ACHIEVE A MINIMAL SIGHT LINE. SYSTEM 901 ACCOMMODATES 3/16" TO 5/16" INFILL PANELS. SEE GLAZING CHART BELOW FOR EXACT SIZE.

CENTER OF GLASS U-FACTOR	902 THERMAL U-FACTORS*	
	CONFIGURATION AND SIZE	
	FX/FX**	FX/FX
0.46	78 3/4" X 78 3/4"	120" X 120"
0.34	0.55	0.51
0.30	0.46	0.41
0.24	0.42	0.37
0.20	0.38	0.32
	0.35	0.28

\* Based on NFRC 100  
 \*\*NFRC Gateway size

SYSTEM 901 & 903 QUICK SET™ GLAZING CHART	POLYCARBONATE			GLASS OR PANEL												
	3/16"	1/4"	5/16"	3/16"	1/4"	1/4"***	5/16"	7/16"	1/2"	9/16"	5/8"	3/4"	7/8"	15/16"	1"	1-1/16"
MONOLITHIC GLASS	C	A	C	C	A	A	C									
INSULATED GLASS																

\*Obscure glass thickness  
 \*\*\*Laminated glass thickness

A-Available glazing option  
 C-Adaptor and/or gasket required  
 Blank - N/A

SYSTEM 902 & 904 QUICK SET™ GLAZING CHART	POLYCARBONATE			GLASS OR PANEL												
	3/16"	1/4"	5/16"	3/16"	1/4"	1/4"***	5/16"	7/16"	1/2"	9/16"	5/8"	3/4"	7/8"	15/16"	1"	1-1/16"
MONOLITHIC GLASS	C	C	C	C	C	C	C									
INSULATED GLASS												C	C	C	A	C



EFCO Quick Set™ System • Thermal and Non-Thermal Storefront Ribbon System  
 901 - 2" x 4 1/2" • 902 - 2" x 5 1/4" • 903 - 2 1/4" x 3 1/4" • 904 - 2" x 4"

**Frame Construction**

Quick Set™ frames have various frame depths. Members are extruded from 6063-T6 aluminum alloy and the nominal material wall thickness is .080". Mullions are captured in the head and sill can receptors or channels without the need for mechanical fasteners. Intermediate horizontals join mullions utilizing shear block construction. See Illustration 1.

**Door Frames**

Quick Set offers integral door frames in shear block construction. Members are nominally .080" in thickness.

**Weather Stripping**

All entrance frames are weather-stripped with bulb gasket.

**Glazing**

Quick Set™ can be inside or outside glazed. Glass is "dry glazed" with a top load gasket. Vertical mullions are butt glazed with structural silicone to achieve a minimal sight line. See Glazing Chart for exact size.

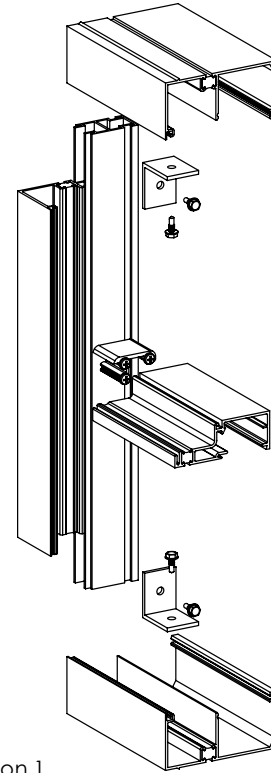
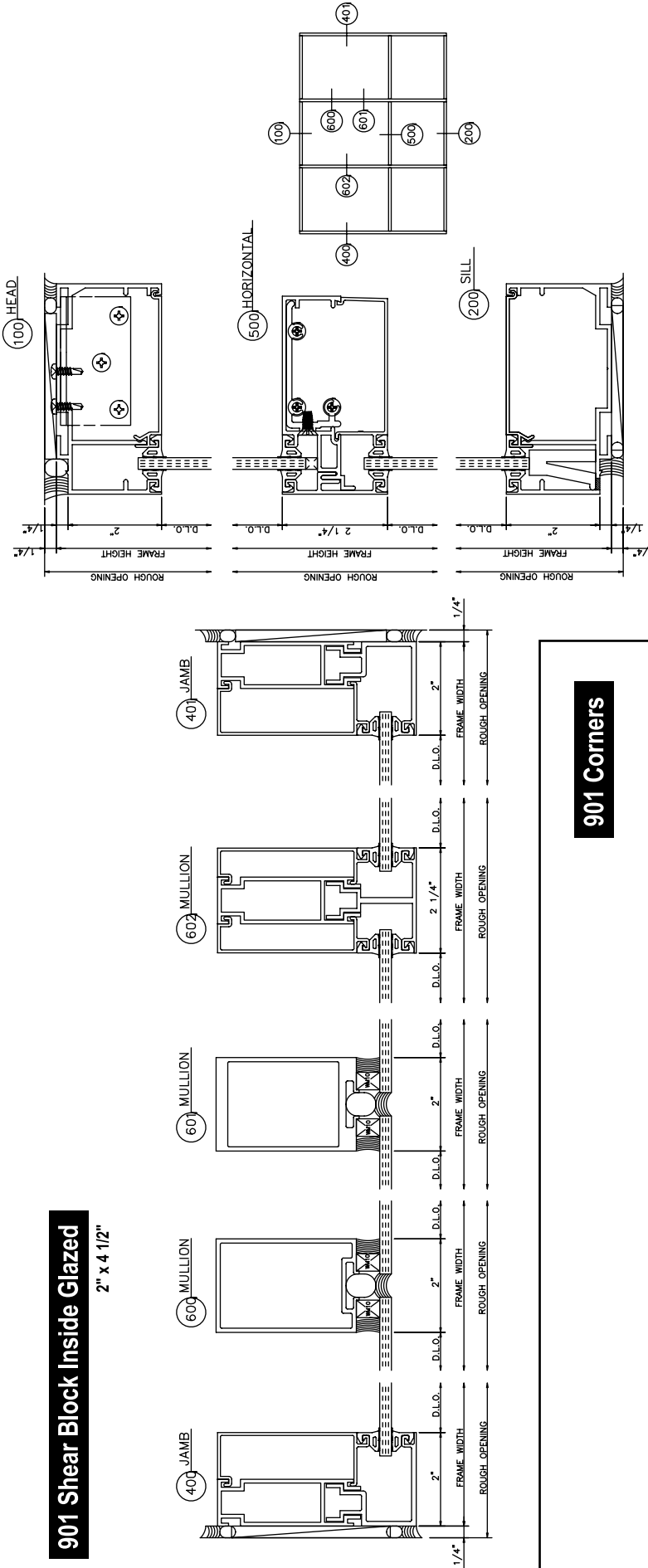


Illustration 1

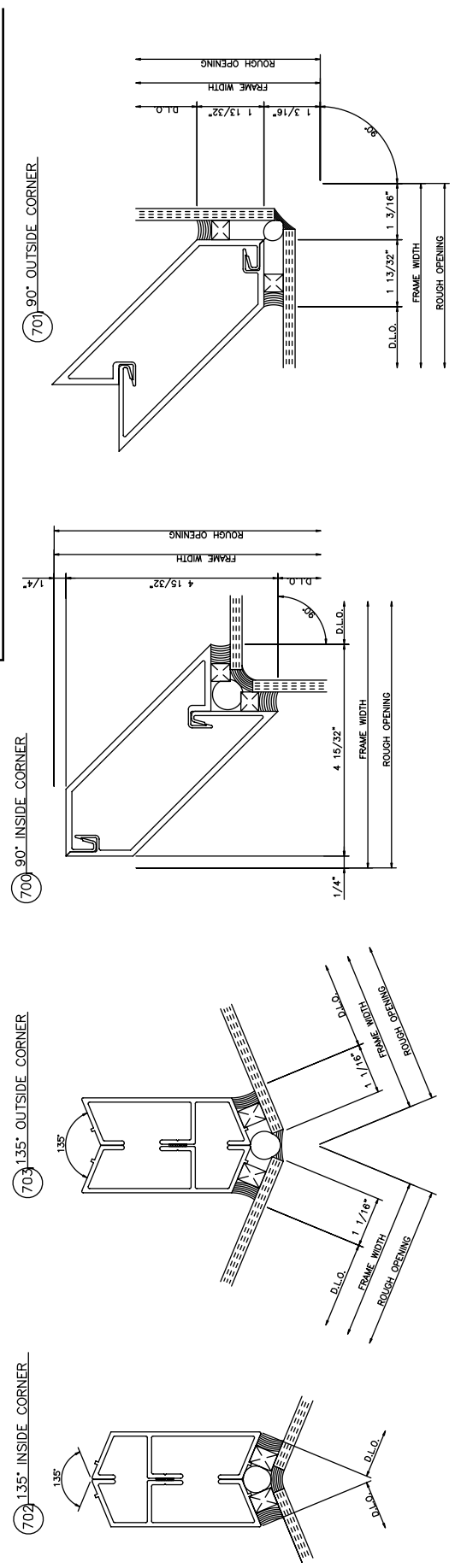




**901 Shear Block Inside Glazed**  
2" x 4 1/2"

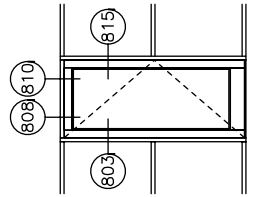
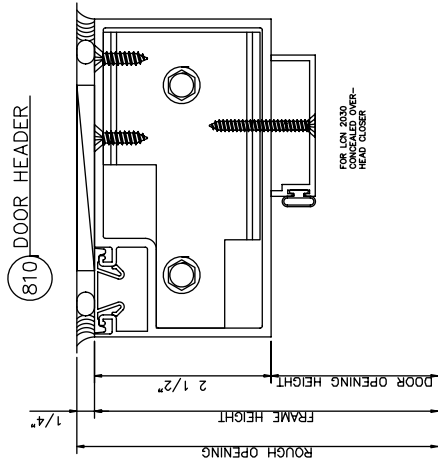
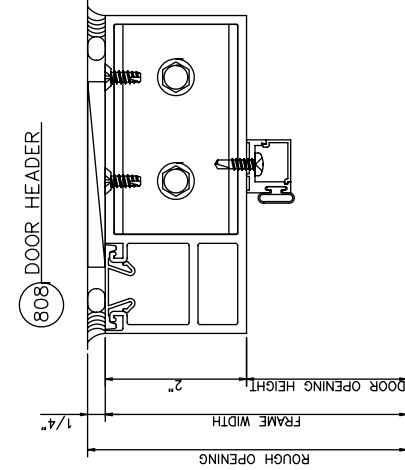
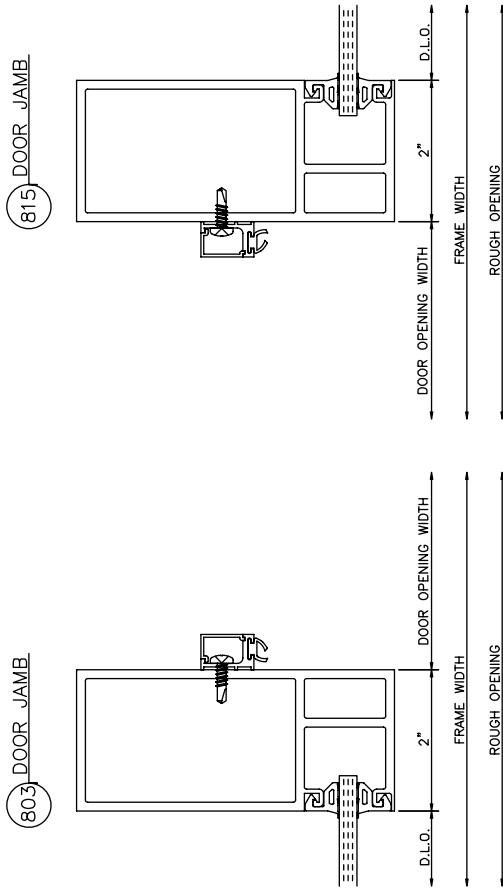


**901 Corners**



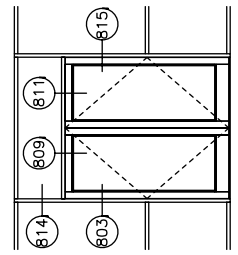
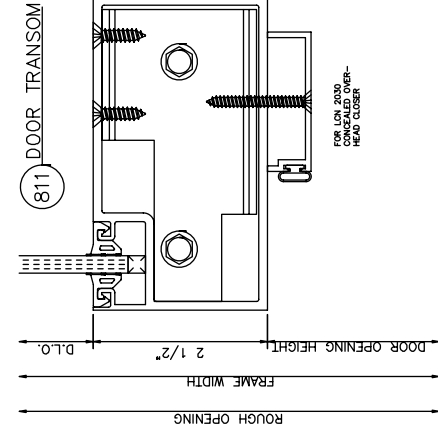
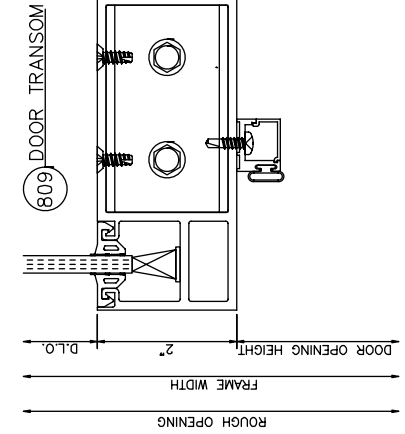
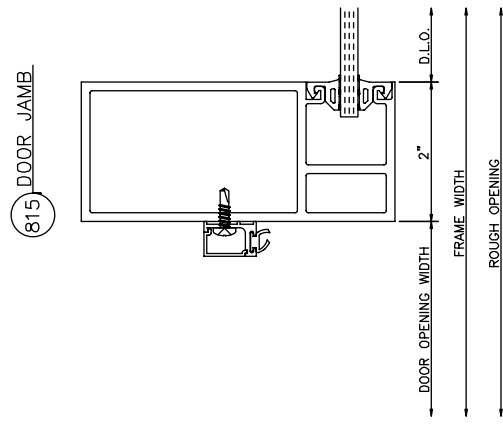
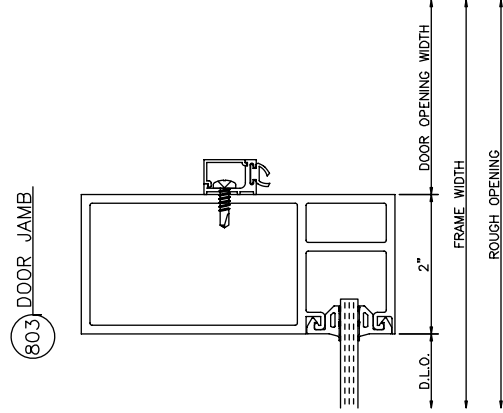
# 901 Door Frames Inside Glazed

Single Acting • Right Swing



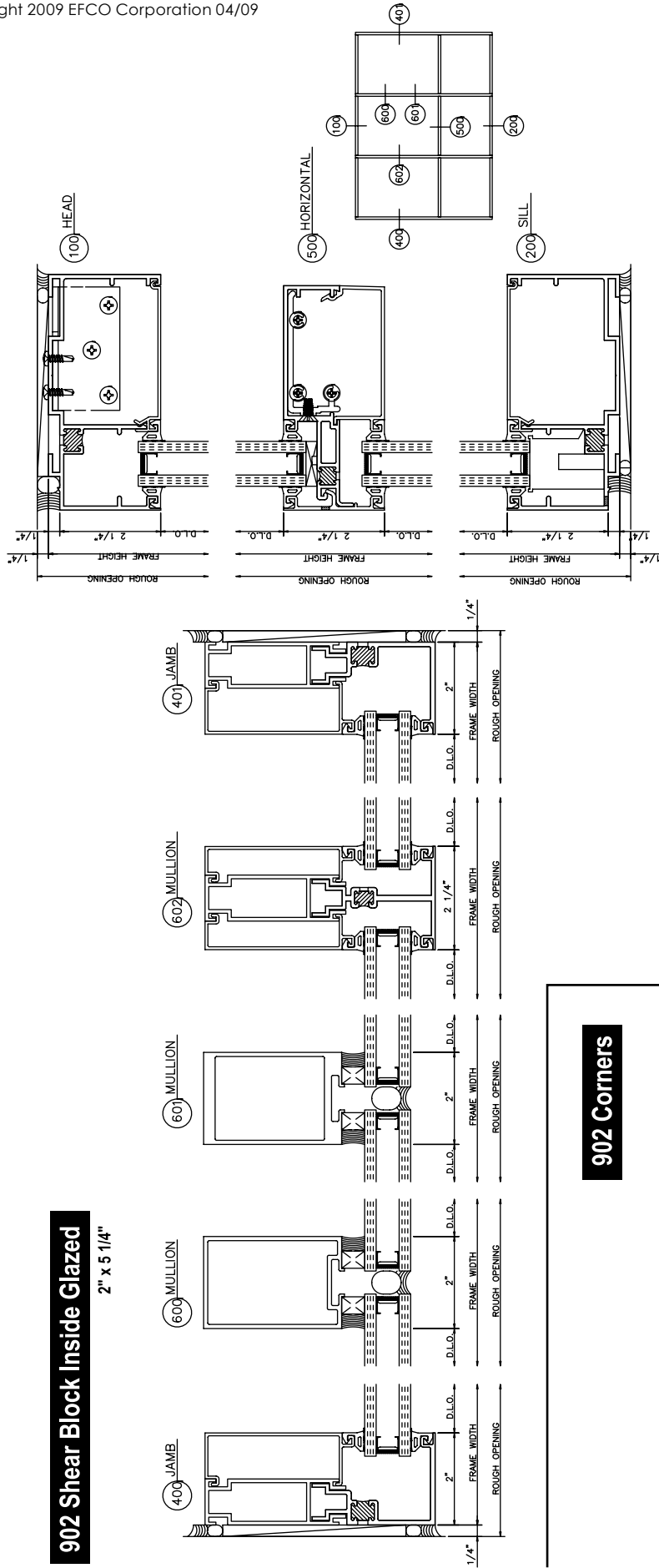
# 901 Double Door Frames Inside Glazed

Single Acting • Left Swing & Right Swing



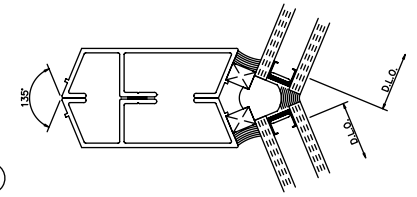
**902 Shear Block Inside Glazed**

2" x 5 1/4"

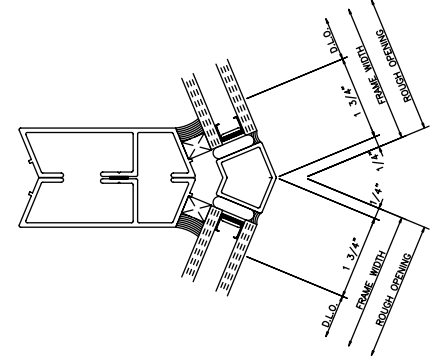


**902 Corners**

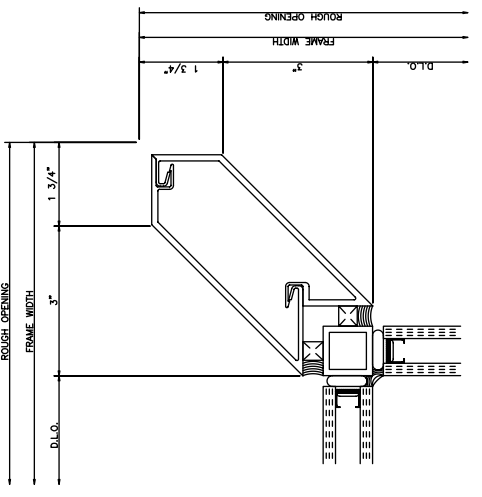
702 135° INSIDE CORNER



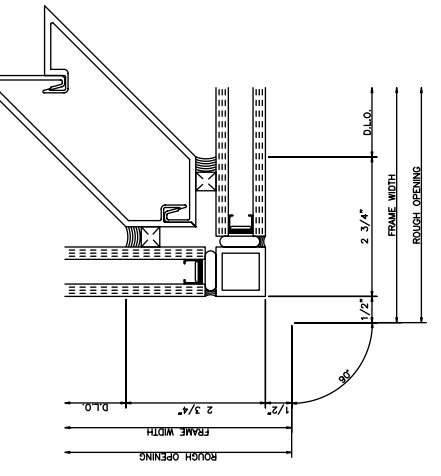
703 135° OUTSIDE CORNER



700 90° INSIDE CORNER

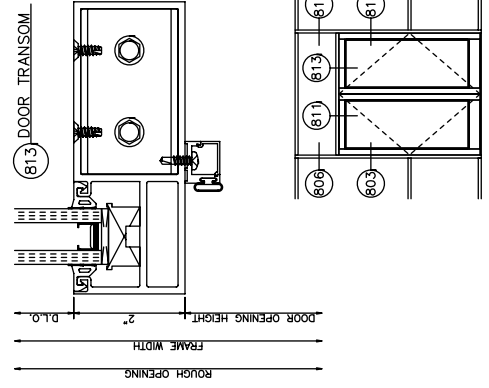
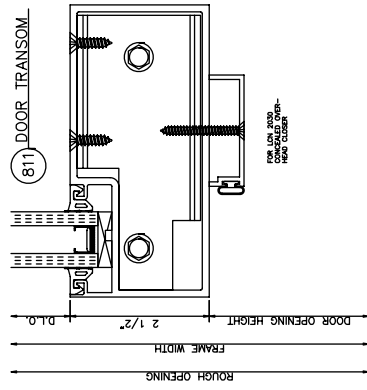
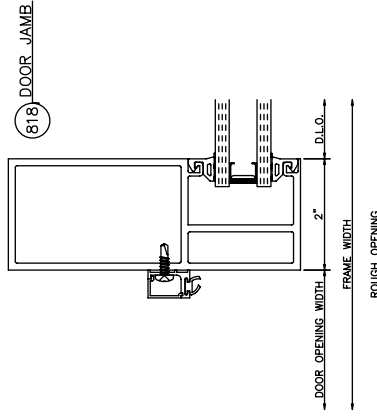
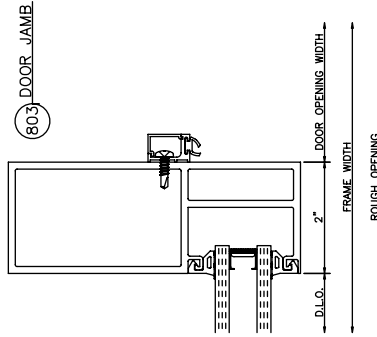
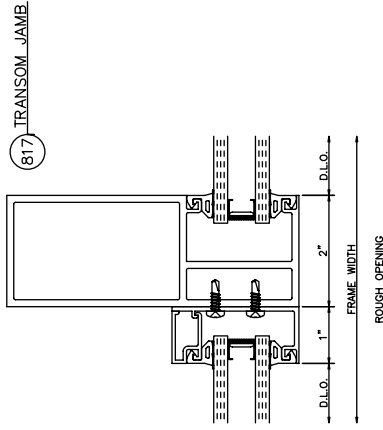
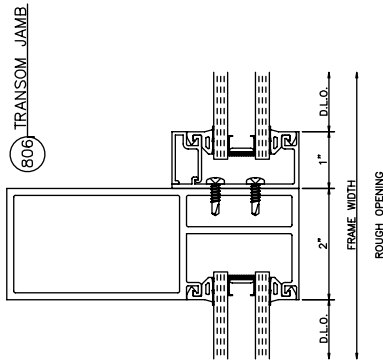
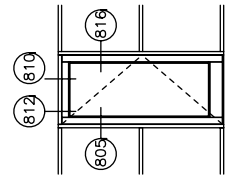
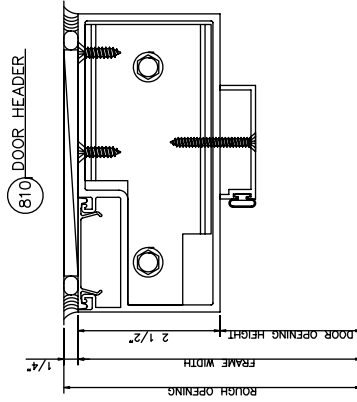
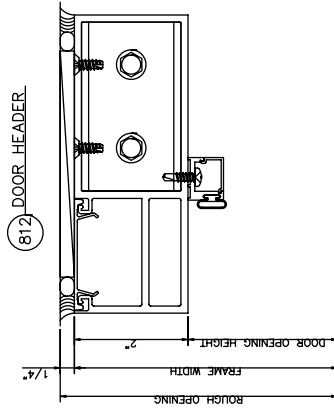
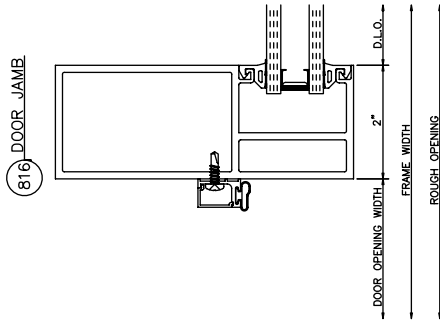
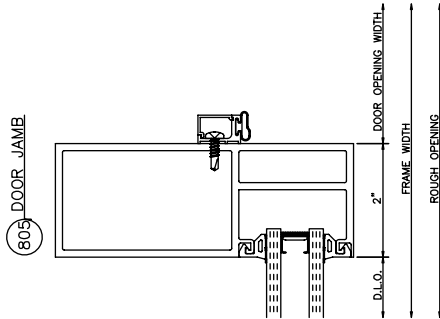


701 90° OUTSIDE CORNER



## 902 Door Frames Inside Glazed

2" x 5 1/4" Single Acting • Right Swing

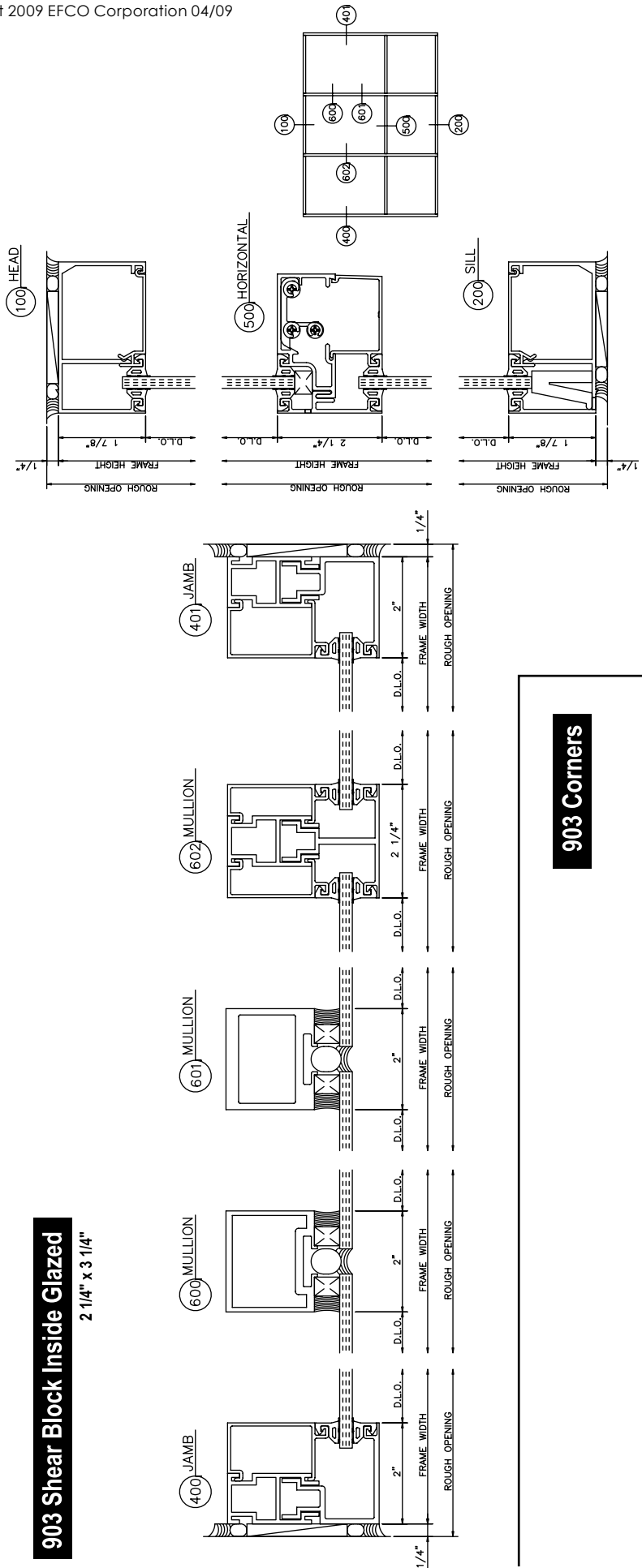


## 902 Double Door Frames Inside Glazed

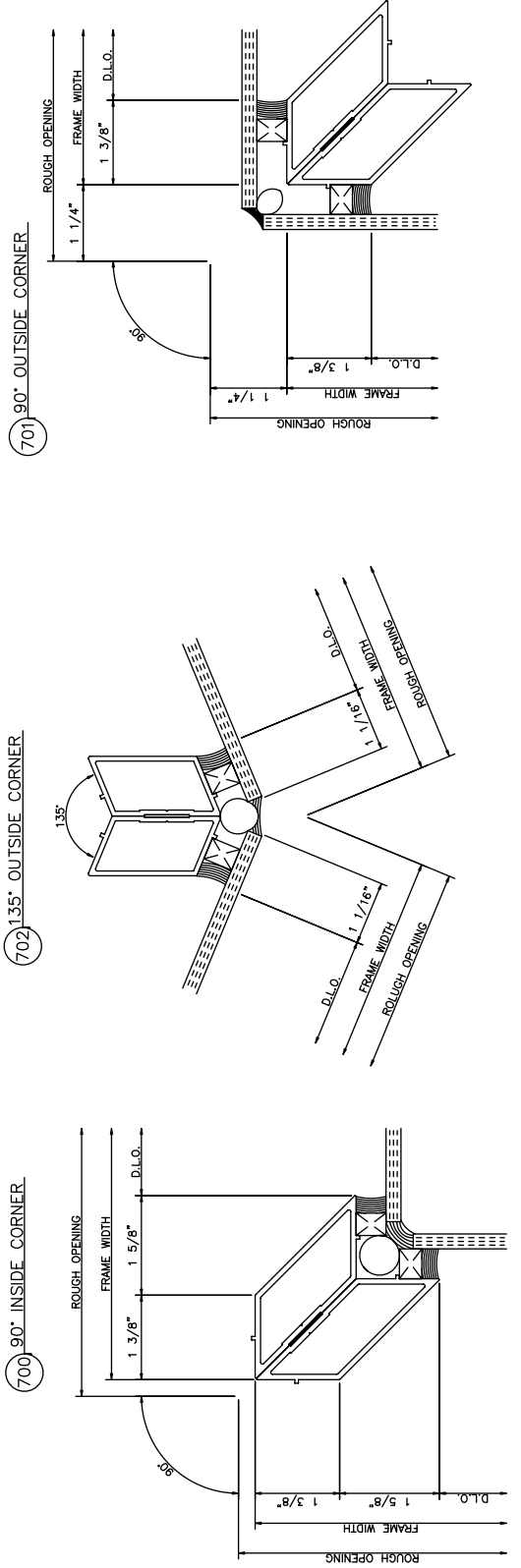
2" x 5 1/4" Single Acting • Left & Right Swing



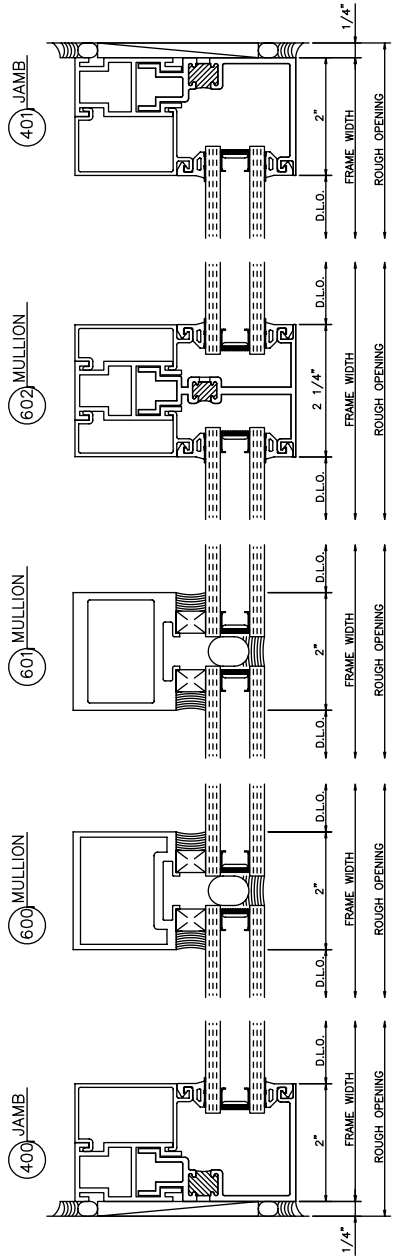
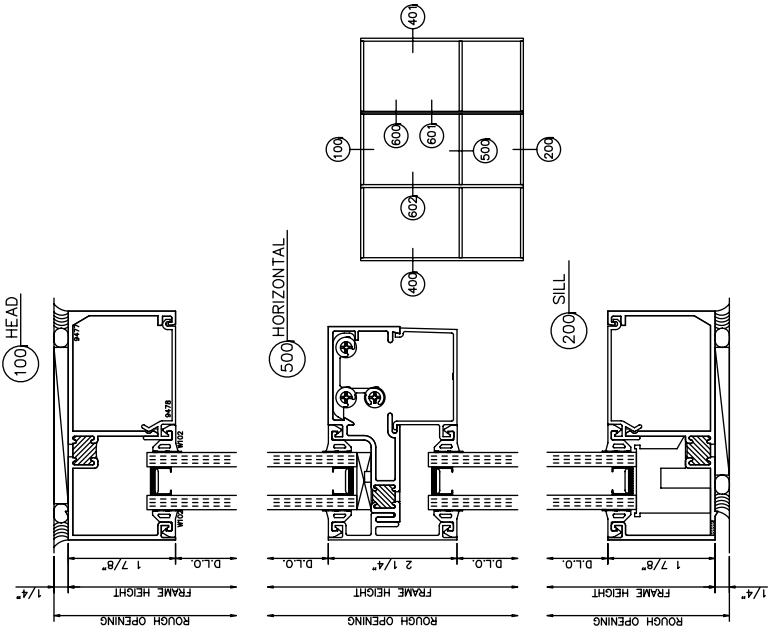
**903 Shear Block Inside Glazed**  
 2 1/4" x 3 1/4"



**903 Corners**



**904 Shear Block Inside Glazed**  
2" x 4"



**904 Corners**

