

# System WV410 Storefront Window System



## CONFIGURATIONS

### Project-out • Casement-out

The WV410 storefront vent system is designed to be field glazed and installed with a minimal amount of labor. These vents are offered in two configurations: out-swing casements and project-out vents. Although the WV410 vent is designed to complement the flush glazed storefront, it may be glazed into any framing system with a flush surface opening and minimum frame depth of 3 7/16".

## Features

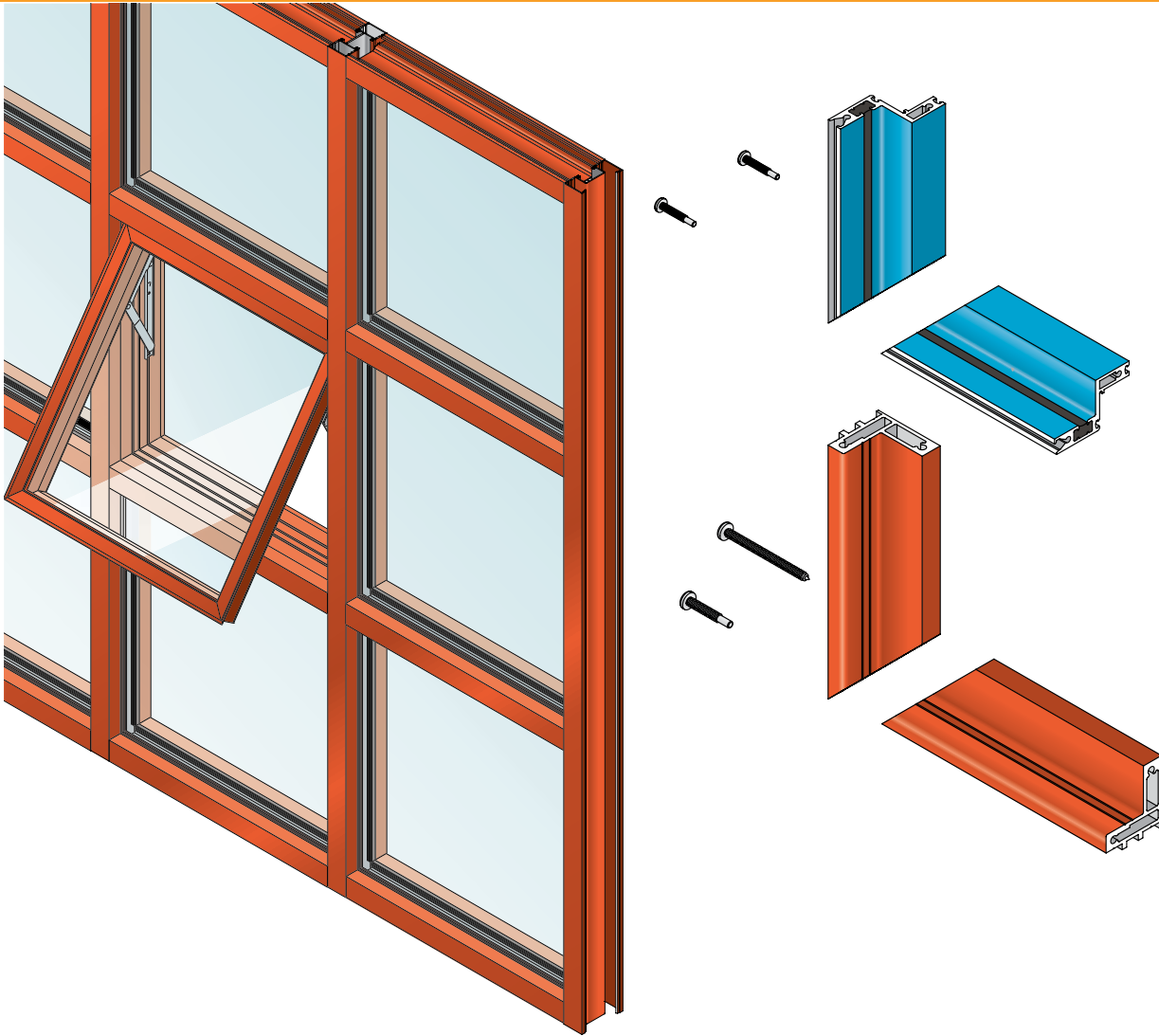
- Thermally improved frames
- Designed to use with storefront systems
- Spans up to 1 1/8" wide glazing pocket
- Interior face of the intermediate mullion aligns flush with storefront horizontal
- Accommodates 1/4" & 1" glazing
- Removable glass stop combination glazing leg
- Minimal sightline meeting rail available
- Screens available
- Screen frames are extruded aluminum alloy
- Anodized and painted finishes available

## Benefits

- Enhanced thermal performance
- Allows operable vent in fixed frames
- Minimal additional metal sightline
- Can be used in retrofit applications
- The plane of the metal does not appear offset
- Energy savings options
- Seals the perimeter glass face
- Maintain the appearance of ribbon applications
- Ventilation
- Stronger more durable screens
- Multiple options to answer economic and aesthetic concerns



# System WV410 Storefront Window System



## PERFORMANCE DATA

### WV410 PROJECTED

AIR INFILTRATION .....	<.10 CFM/FT @ 6.24 PSF
WATER .....	NO LEAKAGE @ 15.0 PSF
STRUCTURAL .....	visit MyEFCO at <a href="http://www.efcocorp.com">www.efcocorp.com</a>
CRF-FRAME (1503.1) .....	59D
CRF-GLASS (1503.1) .....	56D

### WV410 CASEMENT

AIR INFILTRATION .....	<.10 CFM/FT @ 6.24 PSF
WATER .....	NO LEAKAGE @ 12.0 PSF
STRUCTURAL .....	visit MyEFCO at <a href="http://www.efcocorp.com">www.efcocorp.com</a>
CRF-FRAME (1503.1) .....	59D
CRF-GLASS (1503.1) .....	56D

- A = Estimated values and/or designations
- B = Non-standard size or configuration
- C = Dual glazed
- D = 1" Insulated - 1/4" clear, 1/2" air, 1/4" clear
- E = 1" Insulated - 1/4" clear (Low Emissivity), 1/2" air, 1/4" clear
- F = 1" Insulated - 1/4" clear (Low Emissivity), 1/2" argon, 1/4" clear
- G = 1" Insulated - 1/4" clear, 1/2" air, 1/4" clear (Low Emissivity)

WV410 THERMAL U-FACTORS*		
CENTER OF GLASS U-FACTOR	CONFIGURATION AND SIZE	
	PO** 59" X 24"	PO 60" X 36"
0.48	0.54	0.52
0.34	0.43	0.40
0.28	0.38	0.35
0.24	0.35	0.32
0.20	0.31	0.28

\* Based on NFRC 100  
\*\*NFRC Gateway size

SYSTEM WV410 STOREFRONT VENT	POLYCARBONATE			GLASS OR PANEL												
	3/16"	1/4"	5/16"	3/16"	1/4"	1/4"***	5/16"	7/16"	1/2"	9/16"	5/8"	3/4"	7/8"	15/16"	1"	1-1/16"
MONOLITHIC GLASS		O			O	O										
INSULATED GLASS															S	

\*-Obscure glass thickness  
\*\*-Laminated glass thickness

O -Optional  
S -Standard  
Blank - N/A



# System WV410 Storefront Window System

## Application

The WV-410 can only be used in a flush metal opening that is square to within 1/8" for proper sealing.

Maximum Size: 36" x 60" casement

Maximum Size: 60" x 36" project out

Minimum Size: 12" x 12" project out

Minimum Size: 12" x 12" casement

Minimum Size: 20" x 20" casement with 90 deg. vent opening

## Main Frame Construction

Miter cut .080" nominal wall thickness extruded aluminum angle of 6063-T5 or T6 alloy and temper contains integral dual screw bosses. Corners are bed in silicone sealant and assembled using screw spline construction. See Illustration 1.

## Vent Frame Construction

Miter cut .125" nominal wall thickness extruded aluminum angle of 6063-T5 or T6 alloy and temper contains integral dual screw bosses and gasket dart race. Corners are bed in silicone sealant and assembled using screw spline construction. See Illustration 2.

## Hardware

Standard 4 bar hinge operation is utilized with cam handles applied to vent and surface-applied cam strikes on main frame located as required structurally.

## Special Feature

Window can be used in retrofit applications, bridging up to 1 1/8" wide glazing pockets.

## Glazing

The main frame is wet sealed to the surrounding opening on the interior side. The 1" glazing is structurally siliconed to the vent framing at the number four surface with the vent sealed to the main frame with a 1/8" bulb perimeter gasket. At the exterior, a removable glass stop combination glazing leg seals the perimeter glass face.

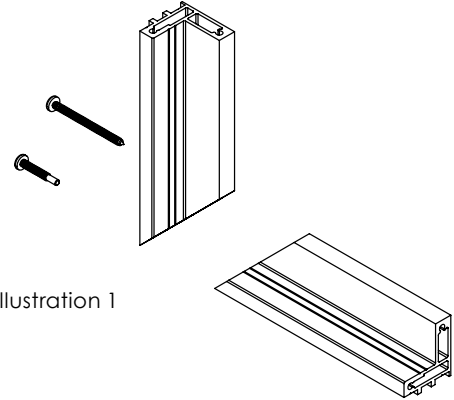


Illustration 1

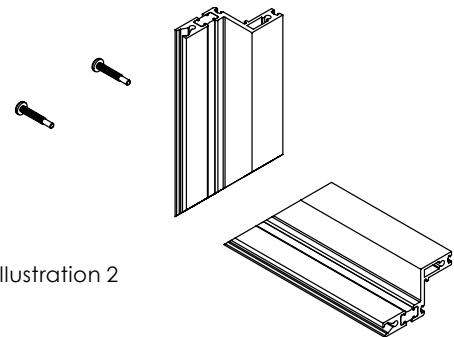
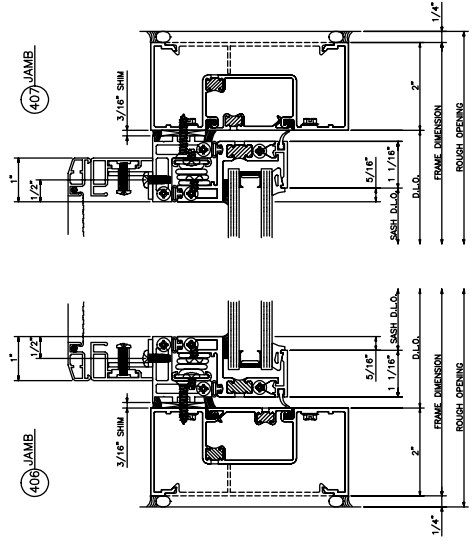
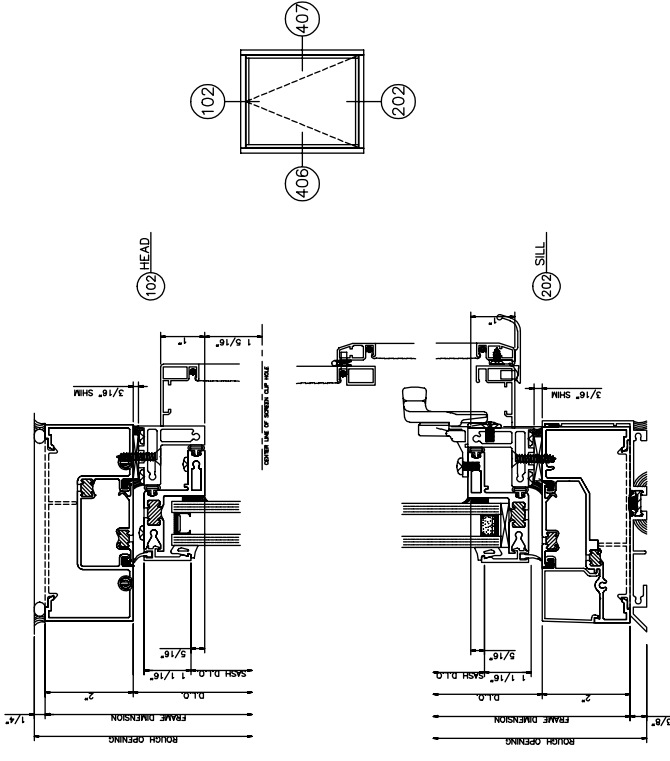


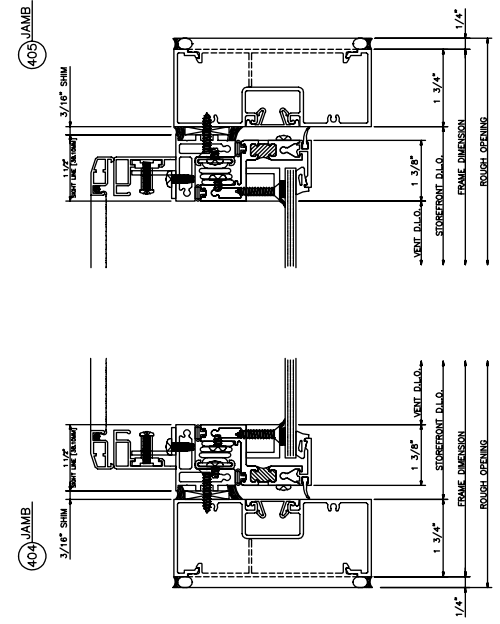
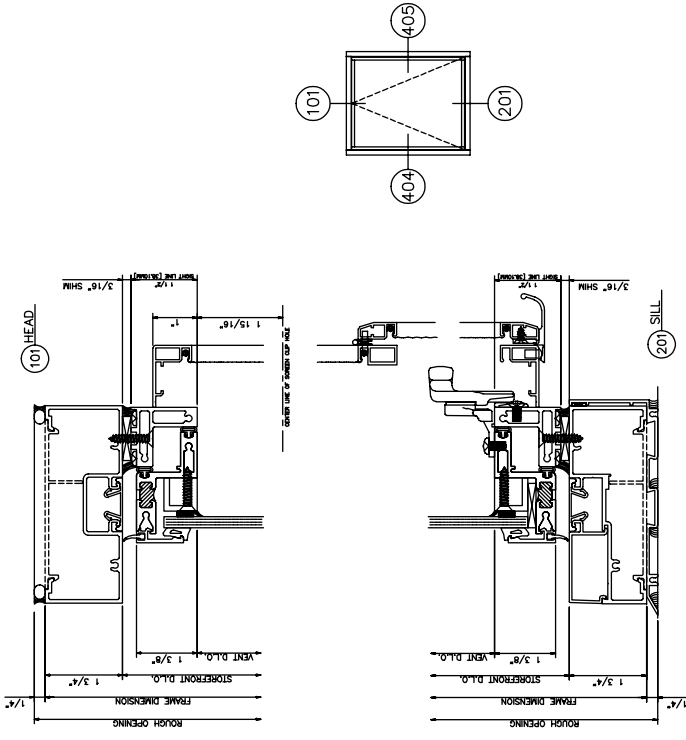
Illustration 2







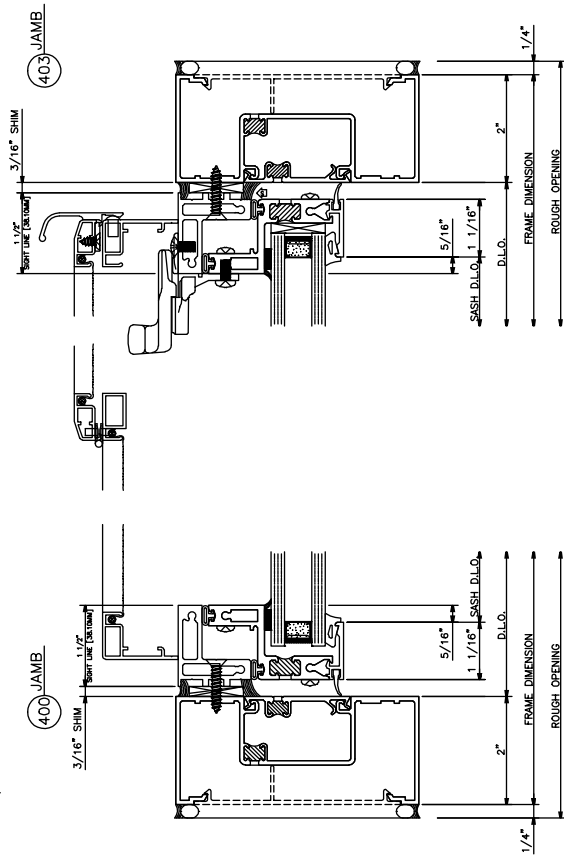
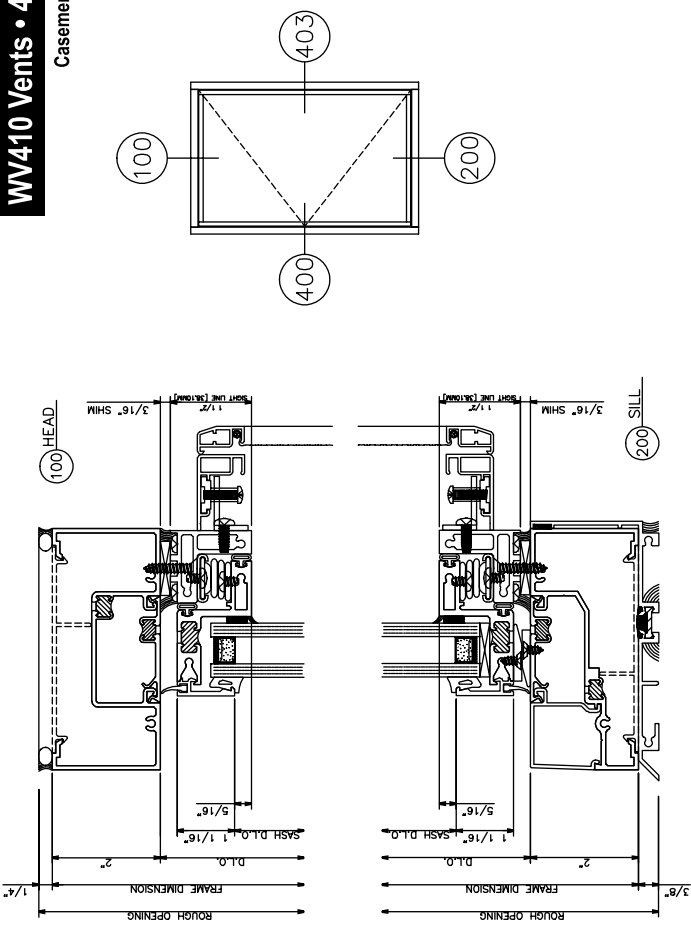
**WW410 Vents • 403 Framing**  
Project Out

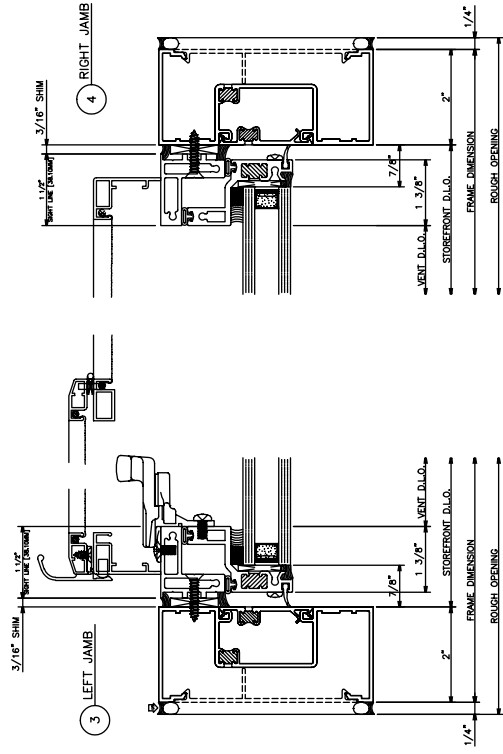
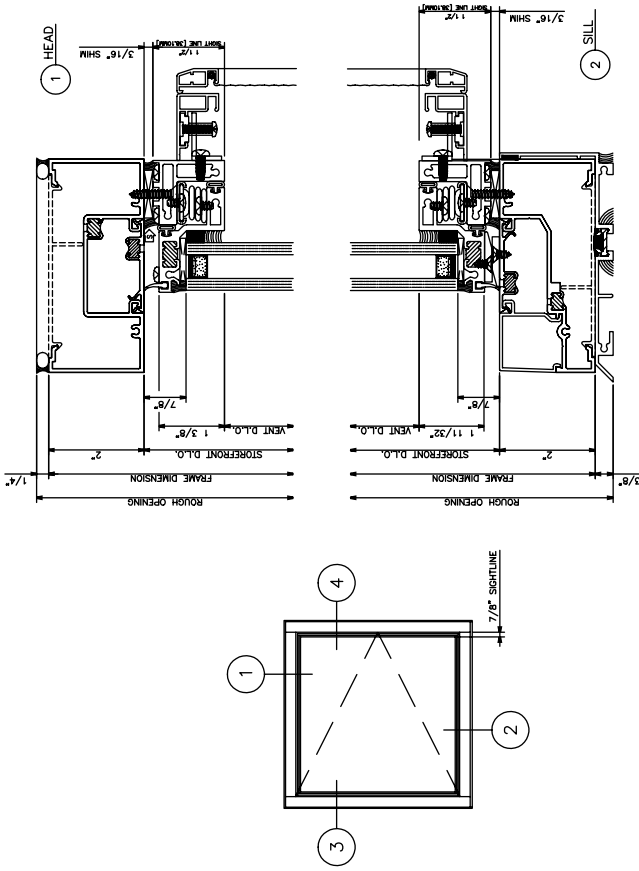


**WW410 Vents • 401 Framing**  
Project Out

# WW410 Vents • 403 Framing

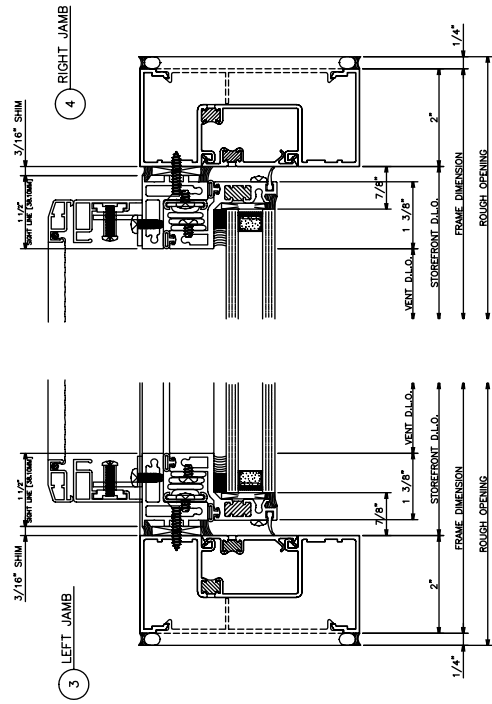
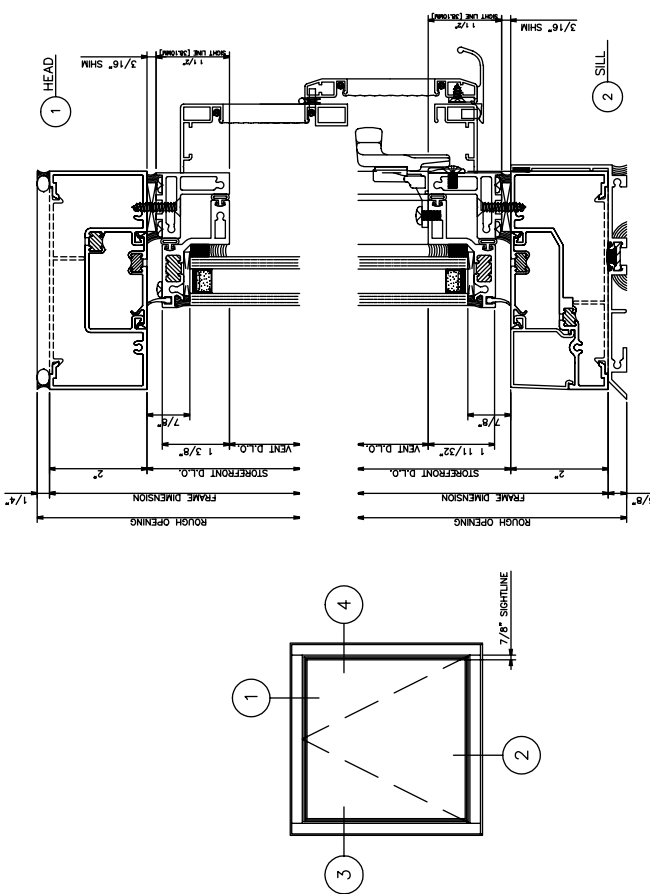
Casement Out • Left Swing





**WW410 SSG Vent**

Casement Out • Right Swing



**WW410 SSG Vent**

Project Out