

Series 3014 Non-Thermal • Series 3016 Thermal Fixed 4 1/2" Heavy Commercial Sliding Glass Door



CONFIGURATIONS

XO • OX • OXXO • OXOR • OXOL • Fixed

The Series 3014 retains an AAMA Heavy Commercial grade rating to meet the most demanding specifications. Designed for high-rise residential and condominiums, the 3014 is an attractive product for a wide range of applications. The high-performance 3014 has been tested to meet the most stringent impact glazing requirements. Multiple glazing options provide flexibility to meet specific design requirements. Series 3014 sliding glass door provides the complete solution for your fenestration needs.

Features

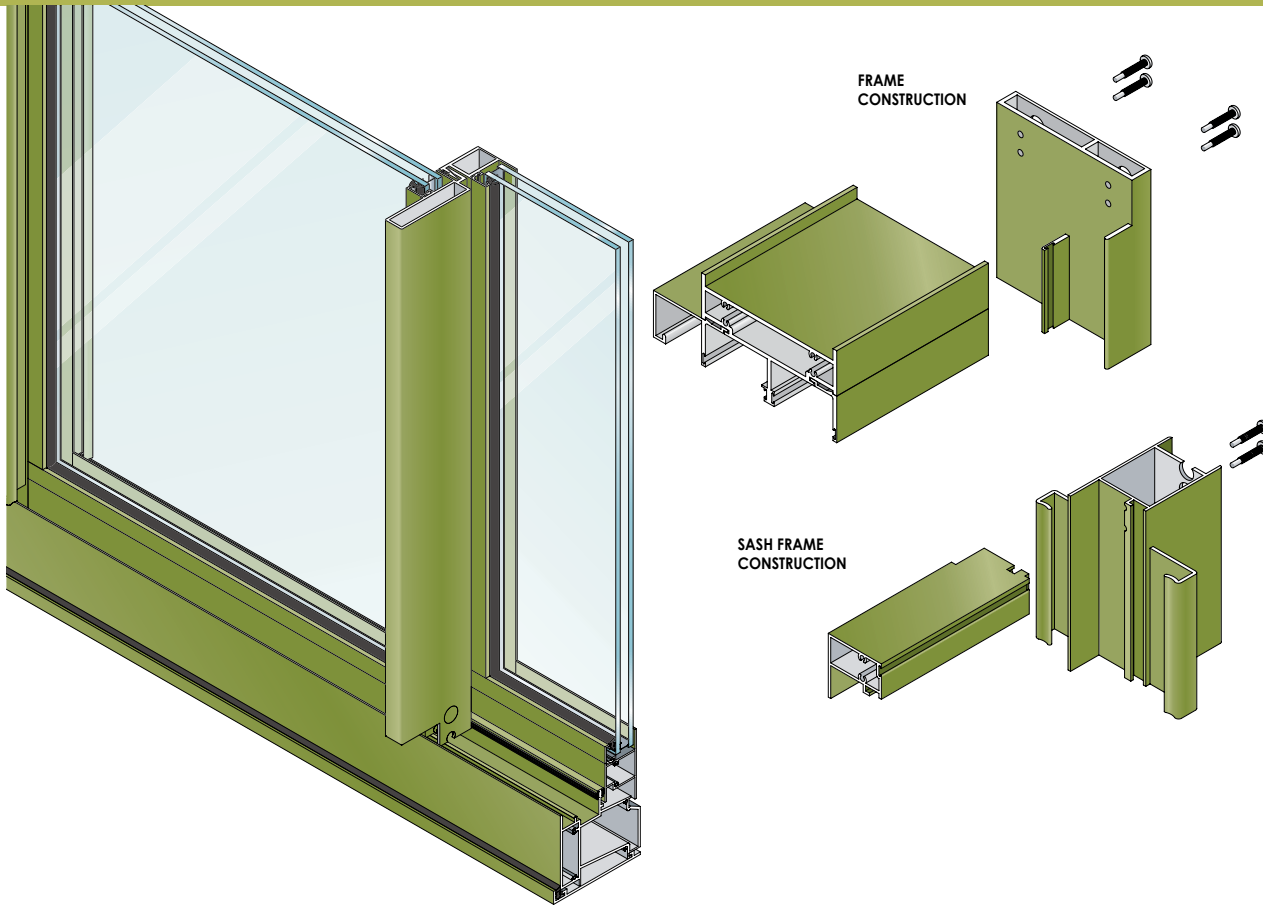
- Heavy-duty meeting rails
- Sash glides on adjustable tandem steel ball bearing rollers
- Raised sill track
- Cam sash design and continuous interlock meeting rails
- Glazing depths of 1/4" or 1" are accommodated
- Heavy-duty screen door frames are extruded aluminum alloy with rollers at the head
- Anodized or painted finishes available

Benefits

- Offers superior structural performance
- Allows easier operation
- Minimizes the effects of debris and dirt buildup on the sill
- Yields superior air, water, and structural performance
- Allows 1" thick insulated units
- Stronger, more durable screens
- Operation is not hindered by debris and dirt build-up on the sill
- Multiple options to answer economic and aesthetic concerns



Series 3014 Non-Thermal • Series 3016 Thermal Fixed 4 1/2" Heavy Commercial Sliding Glass Door



PERFORMANCE DATA

S-3014 NONTHERMAL SLIDING GLASS DOOR (WITHOUT STEEL REINFORCEMENT)

AAMA RATING (NAFS-02)	SGD-HC55
AIR INFILTRATION	<.10 CFM/SF @ 6.24 PSF
WATER	NO LEAKAGE @ 15.0 PSF
STRUCTURAL	±82.5 PSF

S-3014 NONTHERMAL SLIDING GLASS DOOR (WITH STEEL REINFORCEMENT)

AAMA RATING (101-97)	SGD-HC100 ^A
AIR INFILTRATION	<.10 CFM/SF @ 6.24 PSF
WATER	NO LEAKAGE @ 12.0 PSF
STRUCTURAL	±150 PSF

A = Estimated values and/or designations
B = Non-standard size or configuration
C = Dual glazed
D = 1" Insulated - 1/4" clear, 1/2" air, 1/4" clear
E = 1" Insulated - 1/4" clear (Low Emissivity), 1/2" air, 1/4" clear
F = 1" Insulated - 1/4" clear (Low Emissivity), 1/2" argon, 1/4" clear
G = 1" Insulated - 1/4" clear, 1/2" air, 1/4" clear (Low Emissivity)

S-3016 CORRESPONDING FIXED WINDOW HEAVY COMMERCIAL

AAMA RATING (101-97)	F-HC80 ^A
AIR INFILTRATION	<.06 CFM/SF @ 6.24 PSF ^A
WATER	NO LEAKAGE @ 12.0 PSF ^A
STRUCTURAL	±120.0 PSF ^A
CRF-FRAME (1503)	.68 ^{A, D}
CRF-GLASS (1503)	.59 ^{A, D}
U-VALUE (1503)	.61 ^{A, D}

SERIES 3014 HARDWARE CHART	STAINLESS STEEL DEAD BOLT	INTERIOR THUMB TURN	INTERIOR AND EXTERIOR EXTRUDED PULL HANDLE	EXTERIOR CYLINDER LOCK W/ INTERIOR THUMB TURN	STAINLESS STEEL ROLLER TRACK COVER	ADJUSTABLE STAINLESS STEEL BALL BEARING ROLLERS
DOOR HARDWARE	S	S	S	O	S	S

O -Optional
S -Standard
Blank - N/A

S-3014 GLAZING CHART	POLYCARBONATE		GLASS OR PANEL																	
	1/8"	3/16"	1/4"	1/8"	.156"	3/16"	.200"	1/4"	1/4"	1/2"	5/8"	3/4"	7/8"	1"	1-1/8"	1-1/4"	1-1/2"	1-3/4"	2"	
MONOLITHIC & INSULATED GLASS								A						A						

*Obscure glass thickness
**Laminated glass thickness

A-available glazing option
Blank - N/A

FIXED S-3016 GLAZING CHART	POLYCARBONATE		GLASS OR PANEL																	
	1/8"	3/16"	1/4"	1/8"	.156"	3/16"	.200"	1/4"	1/4"	1/2"	5/8"	3/4"	7/8"	1"	1-1/8"	1-1/4"	1-1/2"	1-3/4"	2"	
MONOLITHIC & INSULATED GLASS										A				A						



Series 3014 Non-Thermal • Series 3016 Thermal Fixed 4 1/2" Heavy Commercial Sliding Glass Door

Frame Construction

The frames have a depth of 4 1/2" and are constructed of 6063-T6 aluminum alloy. Nominal material wall thickness for the frame is .080". Corners are of screw spline construction and sealed. See Illustration 1.

Sash Frame Construction

The sash consists of tubular aluminum members with .080" nominal material wall thickness of 6063-T6 alloy. Corners are of screw spline construction and sealed. Weather-stripped interlock at the sash meeting rail(s) is standard. This offers superior weathering and structural performance. See Illustration 2.

Weather Stripping

All sash are weather-stripped with TRIPLE FIN™.

Screens

Screen frames are extruded 6063-T6 aluminum alloy with lock. 18 x 16 mesh screens are available in fiberglass and .011" diameter aluminum. 18 x 18 mesh screens are available in .009" diameter stainless steel.

Hardware

The standard locking hardware is Sash Controls™ dead lock. The sash glides on a pair of tandem rollers over a raised sill track, minimizing the effects of dust and dirt build-up. See Hardware Chart for available hardware types.

Glazing

Doors are glazed with an extruded aluminum snap-in glazing bead and drive-in wedge gasket. Glazings of 1/4" or 1" are accommodated. Fixed side lite 3016 series glazes with 1/2" or 1" infill.

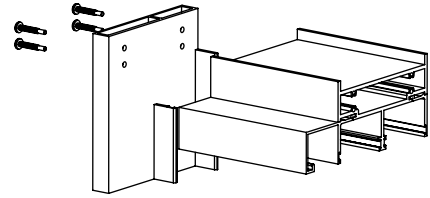


Illustration 1

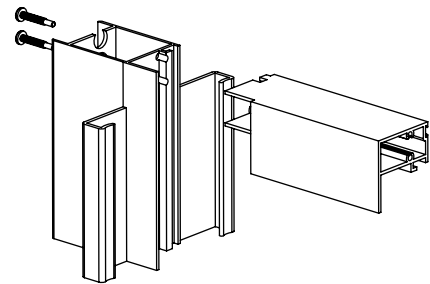
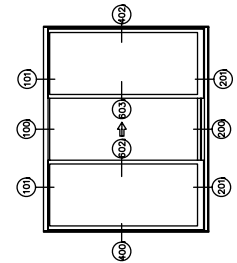
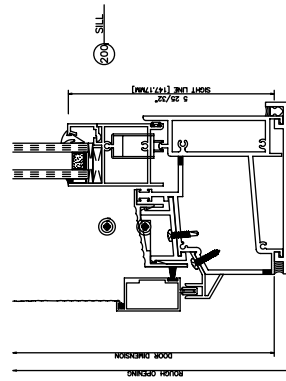
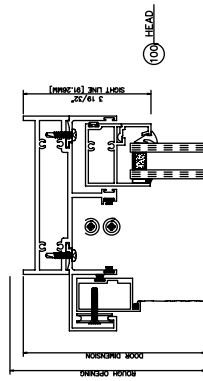
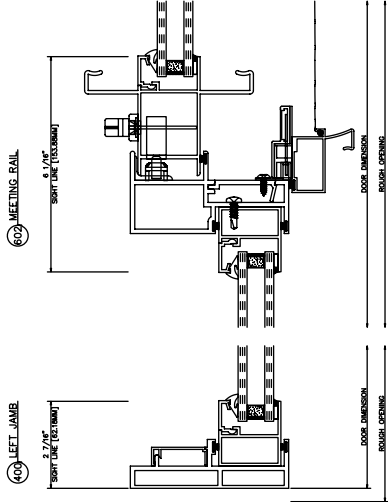
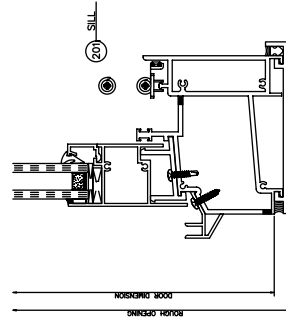
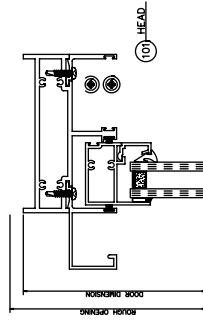
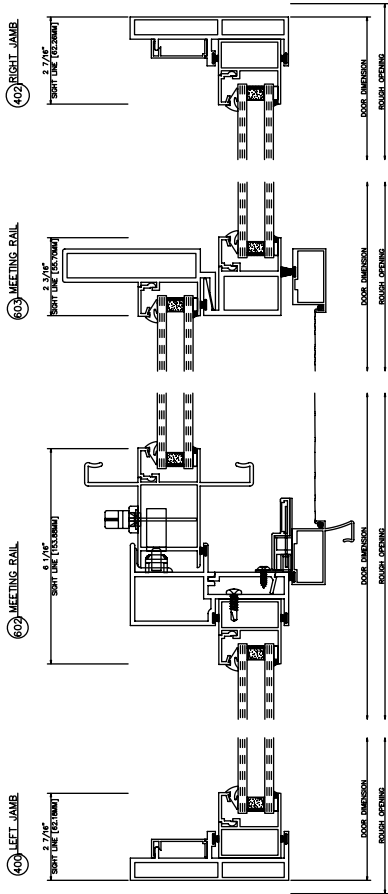
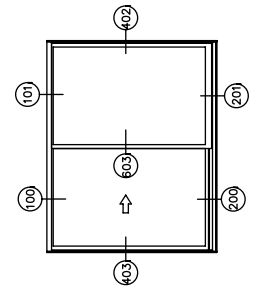
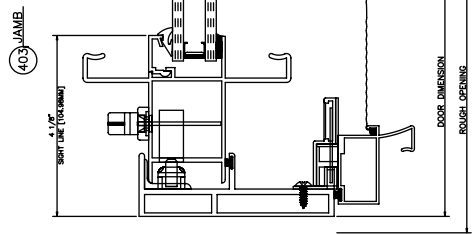
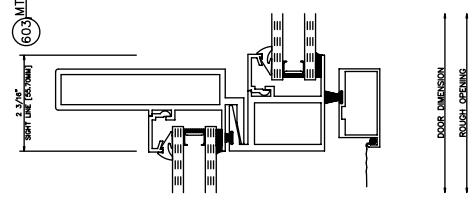
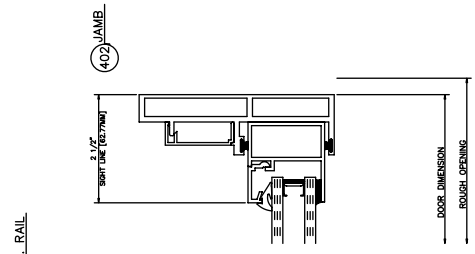
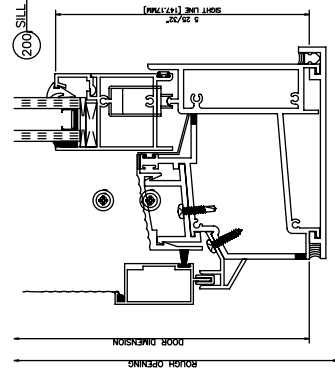
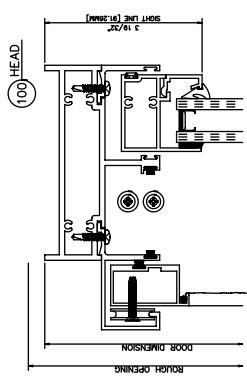
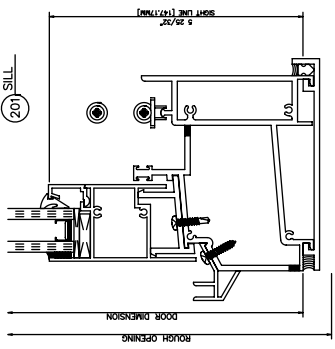
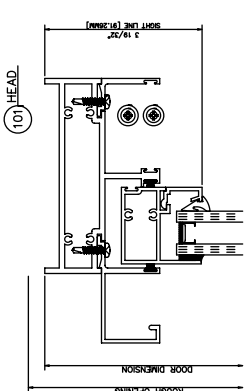


Illustration 2





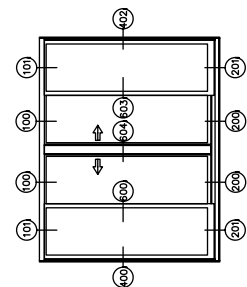
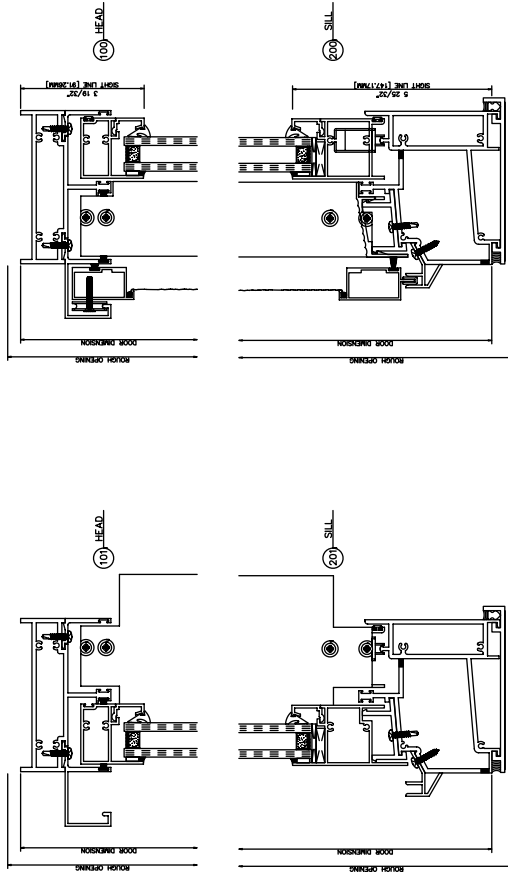
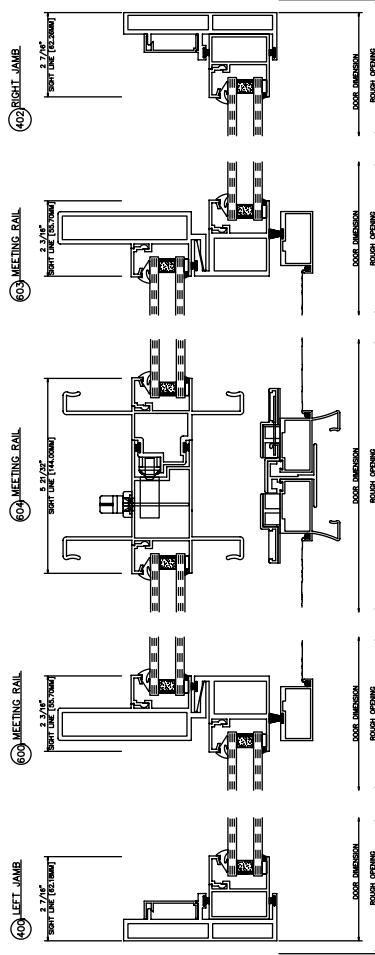
3014 OXO
Inside Glazed



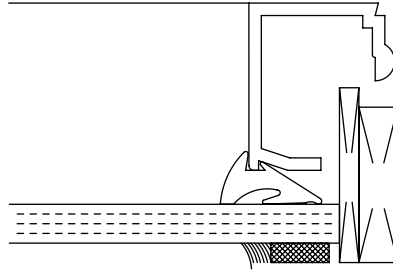
3014 XO
Inside Glazed

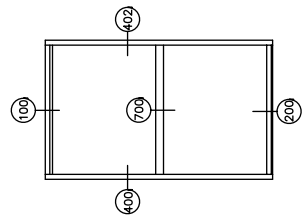
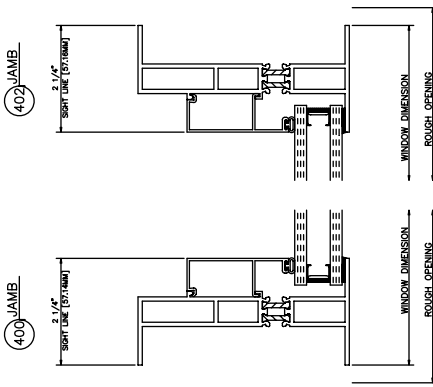
3014 OXXO

Inside Glazed

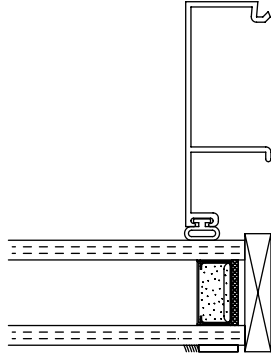


1/4"
MONOLITHIC

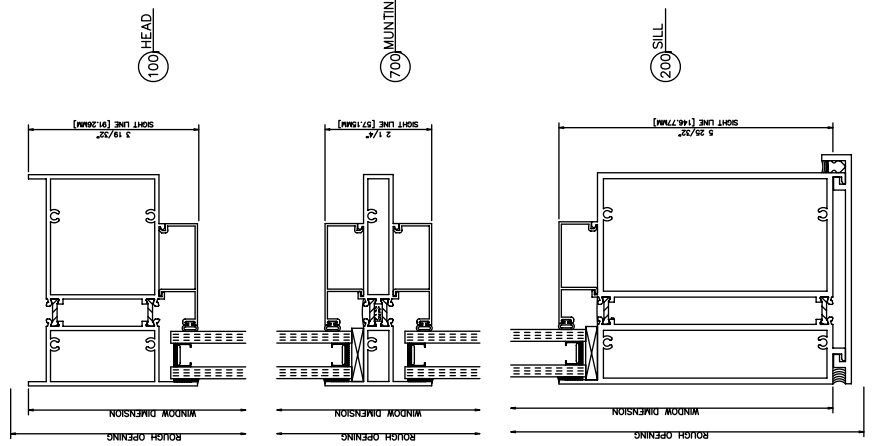
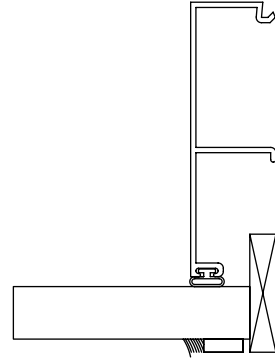




1" INSULATED
 3/16" - 3/16"



1/2" OPEN
 GLAZE



3016 Fixed
 Inside Glazed

3016 Glazing