

Series 3000 Thermal • Series 3050 Non-Thermal • Series 3900 Thermal Fixed 3 1/4" Heavy Commercial Sliding Glass Door



CONFIGURATIONS

XO • OX • OXXO • OXOR • OXOL • Fixed

Series 3000 retains an AAMA Heavy Commercial rating to meet the most demanding specifications. Designed for high-rise residential and condominiums, the 3000 series is an attractive product for a wide range of applications. Multiple glazing options provide flexibility to meet specific design requirements. A thermal barrier in the frame and sash improves thermal performance enhancing energy saving potential. Offered with a complete line of sub frames, mullions and architectural sills, series 3000 provides the complete solution for your fenestration needs.

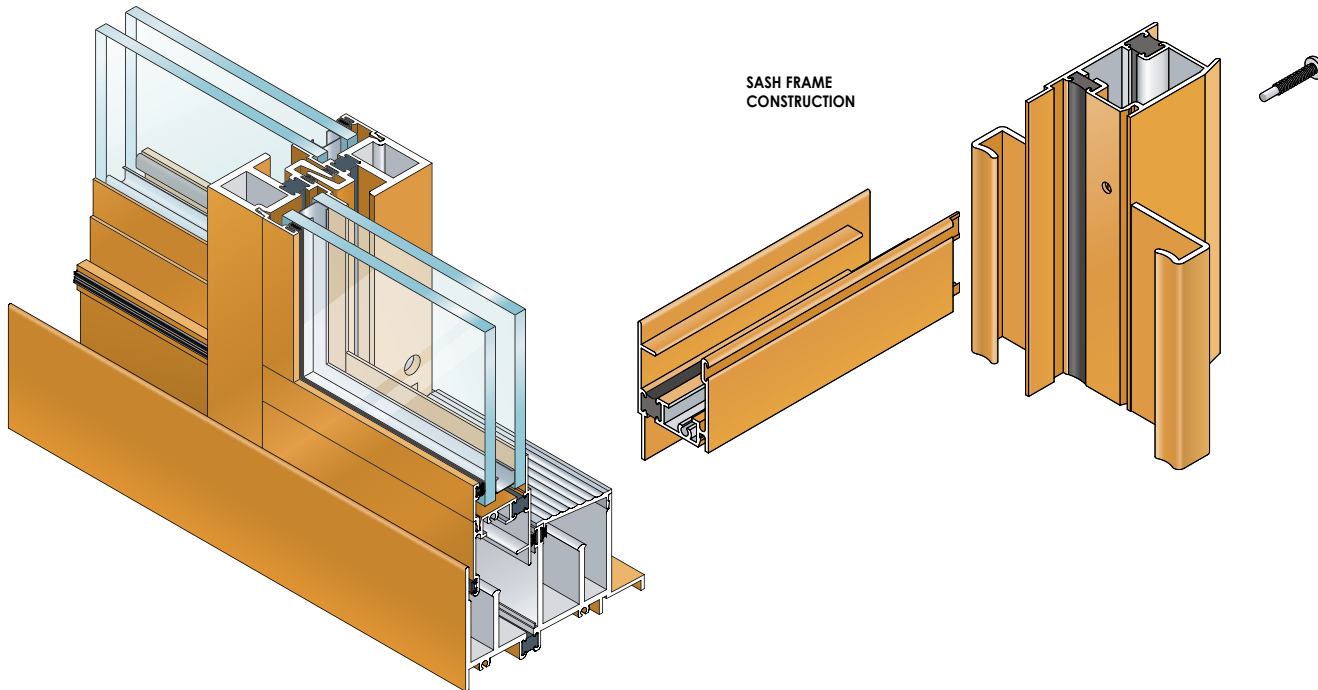
Features

Benefits

Heavy-duty meeting rails	Offers superior structural performance
Sash glides on adjustable tandem steel ball bearing rollers	Allows easier operation
Raised sill track	Minimizes the effects of debris and dirt buildup on the sill
Cam sash design and continuous interlock meeting rails	Yields superior air, water, and structural performance
Heavy-duty screen door frames are extruded aluminum alloy with rollers at the head	Stronger, more durable screens
	Operation is not hindered by debris and dirt build-up on the sill
Accommodates up to 1" glazing	Flexibility in design requirements for glazing
Anodized or painted finishes available	Multiple options to answer economic and aesthetic concerns



Series 3000 Thermal • Series 3050 Non-Thermal • Series 3900 Thermal Fixed 3 1/4" Heavy Commercial Sliding Glass Door



PERFORMANCE DATA

S-3000 AND S-3050 SLIDING GLASS DOOR HEAVY COMMERCIAL

AAMA RATING (NAFS-02)	SGD-HC40
AIR INFILTRATION	<.10 CFM/SF @ 6.24 PSF
WATER	NO LEAKAGE @ 6.0 PSF
STRUCTURAL	±60.0 PSF
CRF-FRAME (1503-98)	.47 ^D
CRF-GLASS (1503-98)	.59 ^D

S-3900 CORRESPONDING FIXED ARCHITECTURAL GRADE

AAMA RATING (A440-05)	F-AW75
AIR INFILTRATION	<.06 CFM/SF @ 6.24 PSF
WATER	NO LEAKAGE @ 15.0 PSF
STRUCTURAL	±112.5 PSF
CRF-FRAME (1503.1)	.62 ^D
CRF-GLASS (1503.1)	.54 ^D

A = Estimated values and/or designations
B = Non-standard size or configuration
C = Dual glazed
D = 1" Insulated - 1/4" clear, 1/2" air, 1/4" clear
E = 1" Insulated - 1/4" clear (Low Emissivity), 1/2" air, 1/4" clear
F = 1" Insulated - 1/4" clear (Low Emissivity), 1/2" argon, 1/4" clear
G = 1" Insulated - 1/4" clear, 1/2" air, 1/4" clear (Low Emissivity)

3000 THERMAL U-FACTORS*				
CENTER OF GLASS U-FACTOR	CONFIGURATION AND SIZE			
	XO** 79" X 79"	XO 88" X 96"	XO 96" X 108"	XO 144" X 108"
0.48	0.60	0.58	0.56	0.52
0.34	0.50	0.47	0.46	0.39
0.28	0.45	0.42	0.41	0.33
0.24	0.42	0.39	0.37	0.30
0.20	0.39	0.36	0.34	0.26

3900 THERMAL U-FACTORS*		
CENTER OF GLASS U-FACTOR	CONFIGURATION AND SIZE	
	FIXED** 47" X 59"	FIXED 60" X 108"
0.48	0.54	0.51
0.34	0.42	0.39
0.28	0.37	0.34
0.24	0.34	0.31
0.20	0.31	0.27

* Based on NFRC 100
**NFRC Gateway size

SERIES 3000 HARDWARE CHART	DEAD BOLT	INTERIOR THUMB TURN	INTERIOR AND EXTERIOR EXTRUDED PULL HANDLE	EXTERIOR CYLINDER LOCK W/ INTERIOR THUMB TURN	EXTERIOR & INTERIOR CYLINDER LOCKS	ADJUSTABLE ZINC PLATED STEEL BALL BEARING ROLLERS	ADJUSTABLE STAINLESS STEEL BALL BEARING ROLLERS
OPTION 1	S	S	S			S	O
OPTION 2	S		S	S		S	O
OPTION 3	S		S		S	S	O

O - Optional
S - Standard
Blank - N/A

S-3000 GLAZING CHART	POLYCARBONATE			GLASS OR PANEL																
	1/8"	3/16"	1/4"	1/8"	.156**	3/16"	.200**	1/4"	1/4**	1/2"	5/8"	3/4"	7/8"	1"	1-1/8"	1-1/4"	1-1/2"	1-3/4"	2"	
MONOLITHIC & INSULATED GLASS								A							A					

*-Obscure glass thickness
**-Laminated glass thickness

FIXED S-3900 GLAZING CHART	POLYCARBONATE			GLASS OR PANEL																
	1/8"	3/16"	1/4"	1/8"	.156**	3/16"	.200**	1/4"	1/4**	1/2"	5/8"	3/4"	7/8"	1"	1-1/8"	1-1/4"	1-1/2"	1-3/4"	2"	
MONOLITHIC & INSULATED GLASS	A	A	A	A	A	A	A	A	A		A	A	A	A						
DUAL GLAZING	EXTERIOR LITE		A	A		A	A	A	A											
	INTERIOR LITE		A	A		A	A	A	A											

A-available glazing option
I-internal blinds can be used with this type of dual glazing
Blank - N/A



Series 3000 Thermal • Series 3050 Non-Thermal • Series 3900 Thermal Fixed 3 1/4" Heavy Commercial Sliding Glass Door

Frame Construction

The frames have a depth of 3 1/4" and are constructed of 6063-T6 aluminum alloy. Nominal material wall thickness for the frame is .080", and the sill has a minimum wall thickness of .125". Corners are of screw spline construction and sealed. See Illustration 1.

Sash Frame Construction

The sash consists of aluminum members with .062" nominal material wall thickness of 6063-T6 alloy. Corners are of screw spline construction and sealed. Single weather-stripped interlock at the sash meeting rail(s) is standard. This offers superior weathering and structural performance. See Illustration 2.

Weather Stripping

All sash are weather-stripped with TRIPLE FIN®.

Screens

Screen frames are extruded 6063-T6 aluminum alloy. 18 x 16 mesh screens are available in fiberglass and .011" diameter aluminum. 18 x 18 mesh screens are available in .009" diameter stainless steel.

Thermal Barrier

All frames and sash members are thermally improved using two-part, high density polyurethane. See Illustration 3.

Hardware

Standard locking hardware is Adams Rite® dead lock. The sash glides on a pair of tandem rollers over a raised sill track, minimizing the effects of dust and dirt build-up. See Hardware Chart for available hardware types and more information.

Glazing

Doors are glazed with an extruded aluminum snap-in glazing bead. Glazings of 1/4" or 1" are accommodated.

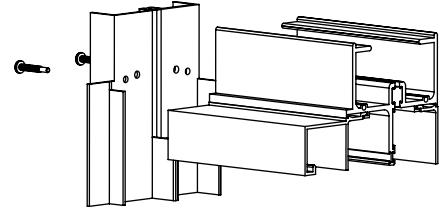


Illustration 1

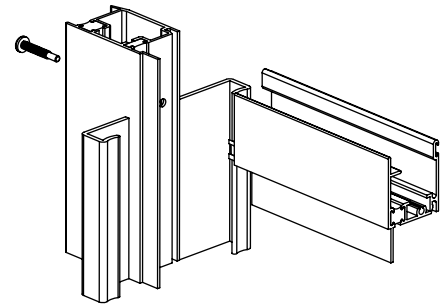


Illustration 2

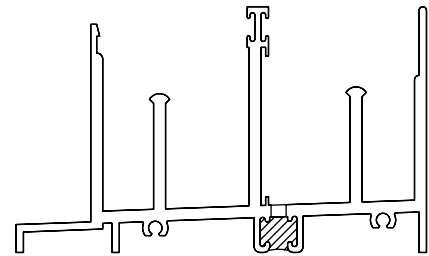
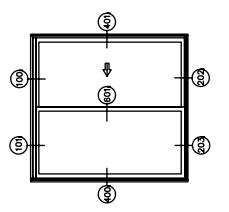
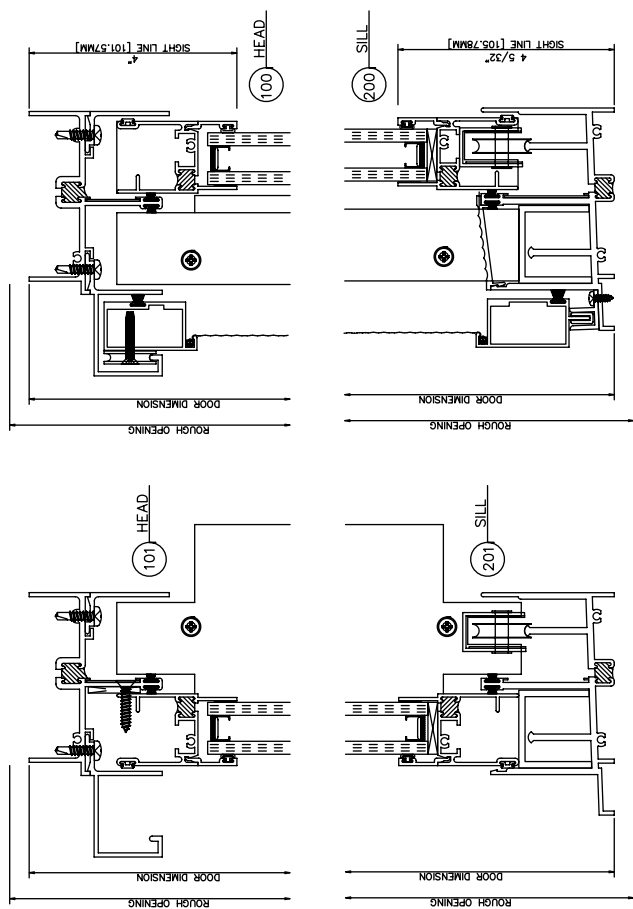
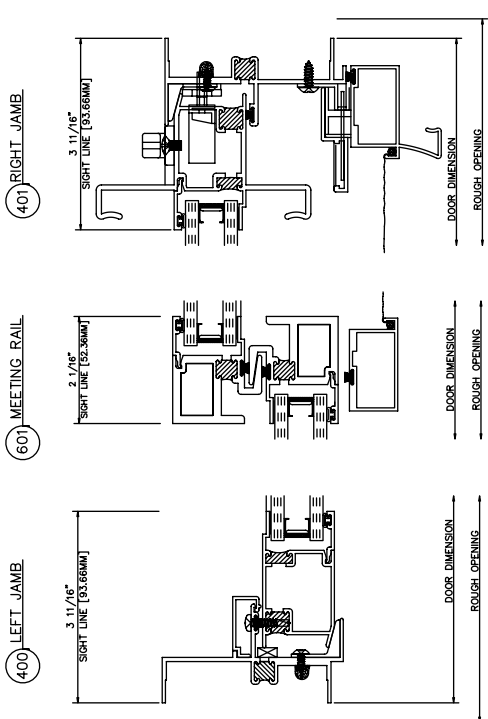
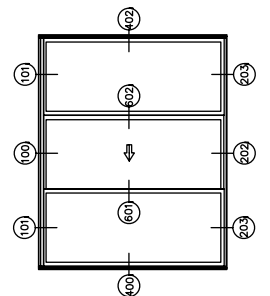
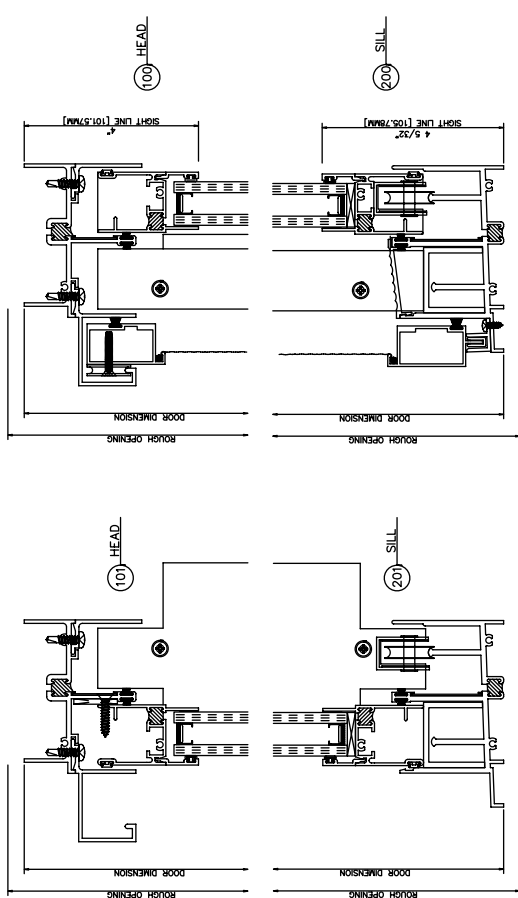
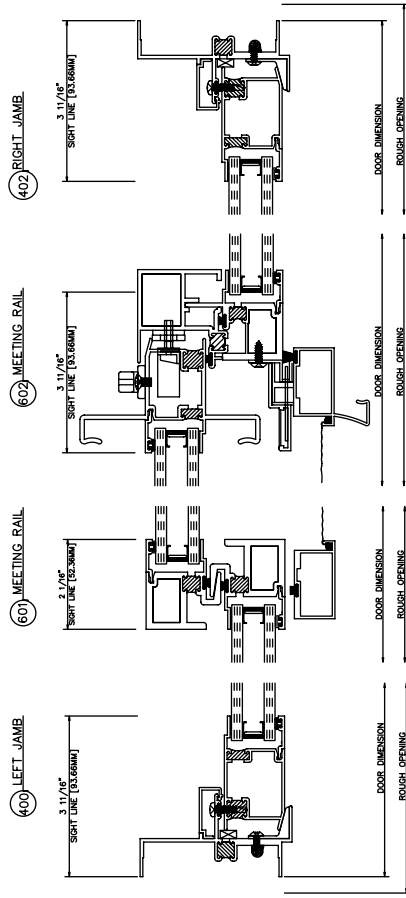


Illustration 3



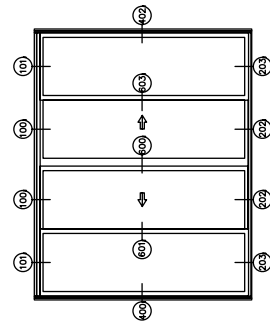
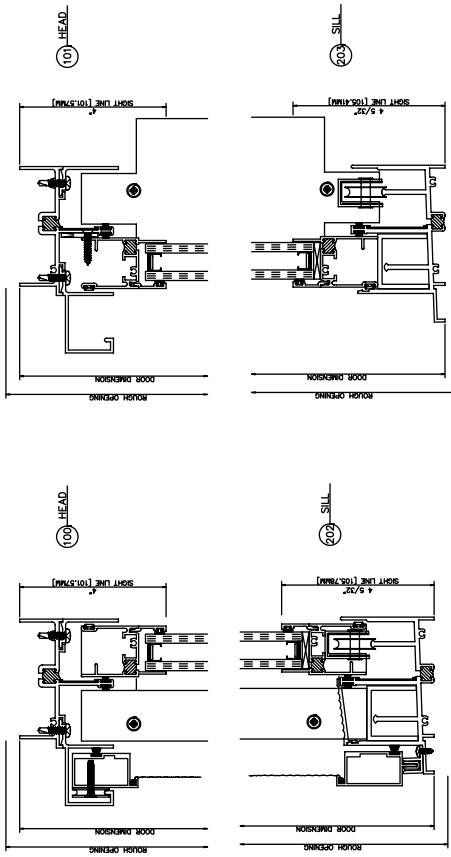
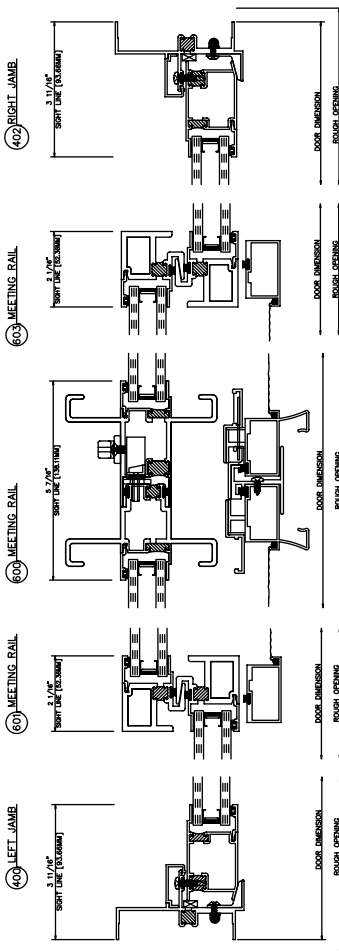
3000 OXO
Inside Glazed

3000 OX
Inside Glazed



3000 OXXO

Inside Glazed



3000 Glazing

1/4" MONOLITHIC

