

# Series 3502 Thermal • Series 3902 Fixed Thermal 3 1/4" Architectural Grade Horizontal Sliding Window



## CONFIGURATIONS

XO • OX • XOX • Fixed

Series 3502 retains an AAMA Architectural Grade rating to meet the most demanding specifications. The 3502 window system is an attractive product for a wide range of applications. Multiple glazing options provide flexibility to meet specific design requirements. E-Strut™ thermal isolators in the frame and sash provide outstanding thermal performance while allowing for dual finish capability. Offered with a complete line of sub frames, mullions and architectural sills the 3502 and 3902 window provides the complete solution for your fenestration needs.

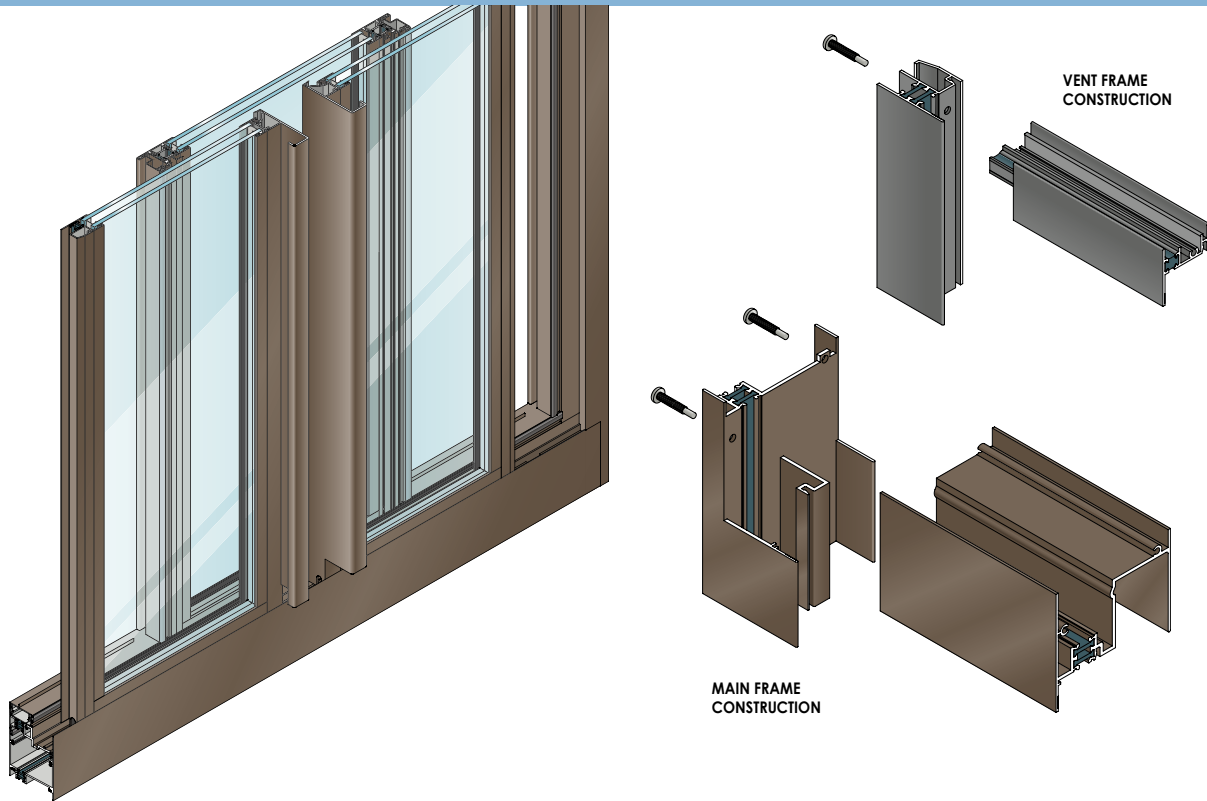
## Features

## Benefits

E-Strut™ thermal isolator	Improves thermal performance Enhances energy saving potential Allows dual finish capability
Continuous interlock at the sash meeting rail	Offers superior weathering and structural performance
Sash glides on tandem steel ball bearing rollers over a raised sill track	The raised sill track minimizes the effect of dirt and debris build-up on the sill
Glazing depths of 1/8" to 1" are accommodated	Expands design and energy saving options
Dual glazing	Improved energy savings
Variety of locking and operating hardware	Allows flexibility in design
Trim-All™ panning, frame extenders, interior trim and stools available	Allows old perimeter frame to remain in place Debris removal is minimized
Screen frames of extruded aluminum alloy are available	Stronger, more durable screens
Accessory line of subframes, mullions, and architectural sills	Allows custom designs with standard product
Anodized and painted finishes available	Multiple options to answer economic and aesthetic concerns



# Series 3502 Thermal • Series 3902 Fixed Thermal 3 1/4" Architectural Grade Horizontal Sliding Window



## PERFORMANCE DATA

**S-3502 HORIZONTAL SLIDING WINDOW ARCHITECTURAL GRADE**

AAMA RATING (101-97)	HS-AW40
AIR INFILTRATION	<.10 CFM/SF @ 6.24 PSF
WATER	NO LEAKAGE @ 12.0 PSF
STRUCTURAL	±60.0 PSF
CRF-FRAME (1503-98)	58°
CRF-GLASS (1503-98)	62°

A = Estimated values and/or designations
B = Non-standard size or configuration
C = Dual glazed
D = 1" Insulated - 1/4" clear, 1/2" air, 1/4" clear
E = 1" Insulated - 1/4" clear (Low Emissivity), 1/2" air, 1/4" clear
F = 1" Insulated - 1/4" clear (Low Emissivity), 1/2" argon, 1/4" clear
G = 1" Insulated - 1/4" clear, 1/2" air, 1/4" clear (Low Emissivity)

CENTER OF GLASS U-FACTOR	3502 THERMAL U-FACTORS*	
	CONFIGURATION AND SIZE	
	XO** 59" X 47"	XO 96" X 78"
0.47	0.61	0.55
0.34	0.52	0.45
0.29	0.49	0.41
0.25	0.46	0.38
0.20	0.43	0.34

CENTER OF GLASS U-FACTOR	3902 THERMAL U-FACTORS*	
	CONFIGURATION AND SIZE	
	XO** 47" X 59"	XO 60" X 108"
0.47	0.56	0.53
0.34	0.45	0.41
0.29	0.41	0.37
0.25	0.38	0.33
0.20	0.34	0.29

\* Based on NFRC 100  
\*\*NFRC Gateway size

S-3502 HARDWARE CHART	CONCEALED PLUNGER LOCK	SWEEP LOCK	AUTO JAMB LOCK	POLE RING SWEEP LOCK	POLE SOCKET	ACCESS CONTROLLED SWEEP HANDLE	ZINC PLATED STEEL BALL BEARING ROLLERS	STAINLESS PLATED STEEL BALL BEARING ROLLERS
HORIZONTAL SLIDING	S	O		O		O	S	O

Some size restrictions may apply depending on hardware selected.

O - Optional  
S - Standard  
Blank - N/A

S-3502 GLAZING CHART	POLYCARBONATE			GLASS OR PANEL																
	1/8"	3/16"	1/4"	1/8"	.156**	3/16"	.200**	1/4"	1/4**	1/2"	5/8"	3/4"	7/8"	1"	1-1/8"	1-1/4"	1-1/2"	1-3/4"	2"	
MONOLITHIC & INSULATED GLASS				A	A	A	A	A		A	A	A	A							
DUAL GLAZING	EXTERIOR LITE						A	A	A											
	INTERIOR LITE					A	A	A												

\* Obscure glass thickness  
\*\* Laminated glass thickness

A - Available glazing option  
I - Internal blinds can be used with this type of dual glazing  
Blank - N/A



# Series 3502 Thermal • Series 3902 Fixed Thermal 3 1/4" Architectural Grade Horizontal Sliding Window

## Frame Construction

The frames have a depth of 3 1/4" and are constructed of 6063-T6 aluminum alloy. Nominal material wall thickness for the frame is .062", and the sill has a minimum wall thickness of .094". Corners are of screw spline construction and sealed. See Illustration 1.

## Sash Frame Construction

The sash consists of aluminum members with .062" nominal material wall thickness of 6063-T6 alloy. Sash verticals telescope into sash horizontals. Corners are of screw spline construction and sealed. Cam sash design and continuous interlock at the sash meeting rail offers superior weathering and structural performance. See Illustration 2.

## Weather Stripping

The perimeter of the sash is weather-stripped with Schlegel Q-Lon®. Two holes or slots through the window sill facilitate weepage.

## Screens

Screen frames are extruded 6063-T6 aluminum alloy. 18 x 16 mesh screens are available in fiberglass and .011" diameter aluminum. 18 x 18 mesh screens are available in .009" diameter stainless steel.

## Thermal Barrier

Sash horizontal rails and handle rail are thermally improved using the latest in two-part, high density polyurethane. All other members are thermally isolated with two thermal struts, consisting of glass reinforced polyamide nylon, mechanically crimped in raceways extruded in the exterior and interior extrusions. See Illustration 3.

## Hardware

Concealed plunger lock at sash meeting rail with a flush mounted actuating handle is standard. Optional sweep locks, access controlled sweep locks, pole ring sweep locks, and keepers are of cast white bronze with a US25D finish. The sash glides on steel ball bearing rollers over a raised sill track ensuring smooth operation and minimizing the effects of debris and dirt build-up on the sill. See the Hardware Chart for available hardware types.

## Glazing

Windows are inside glazed with an extruded aluminum snap-in glazing bead. Glazings of 1/8" to 1" can be accommodated. See the Glazing Chart for the exact size.

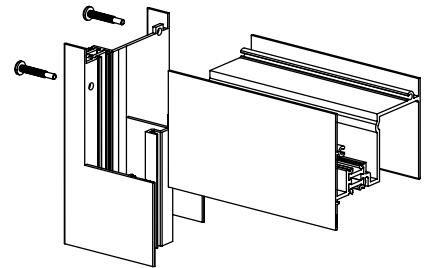


Illustration 1

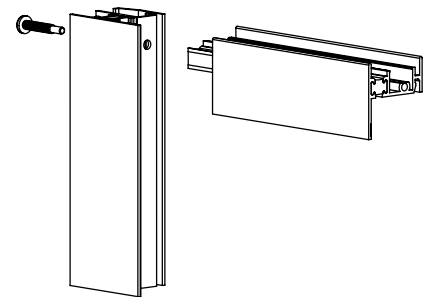


Illustration 2

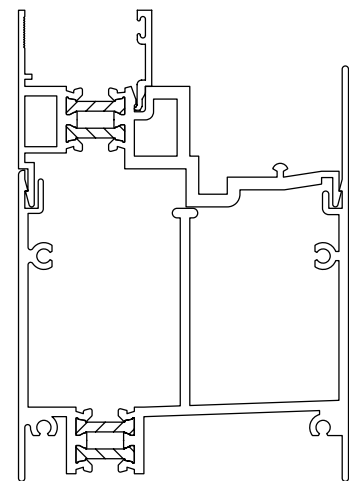
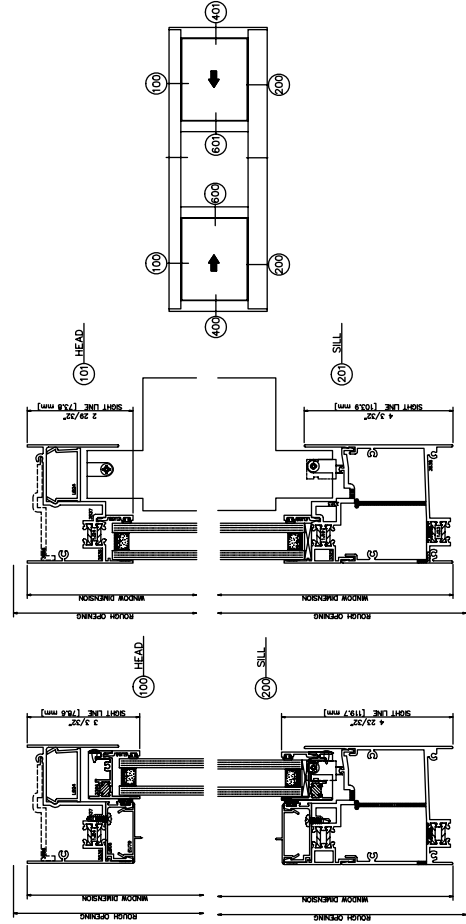
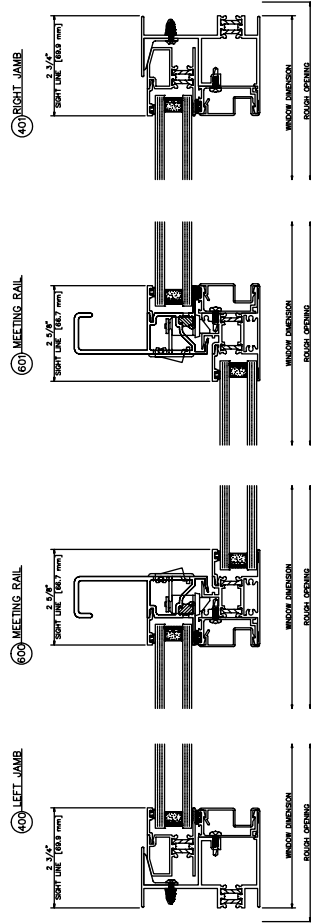


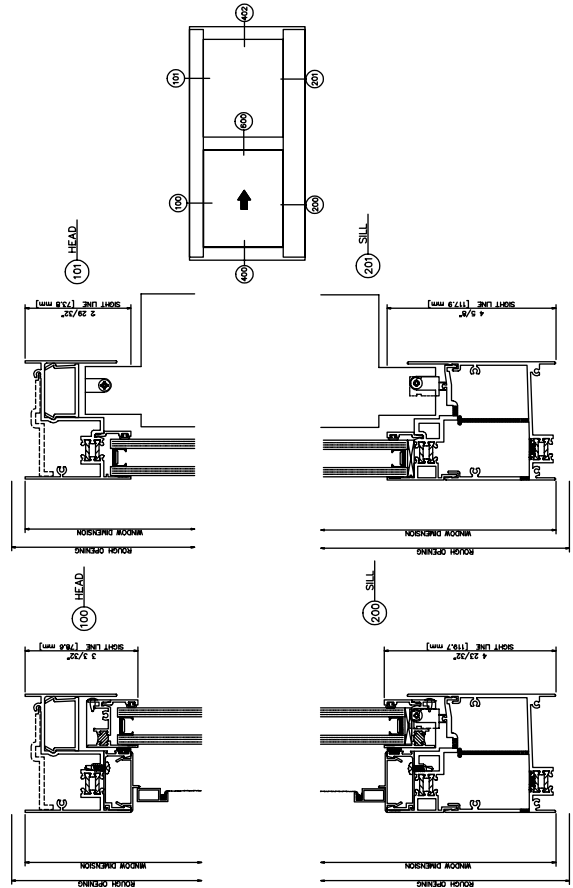
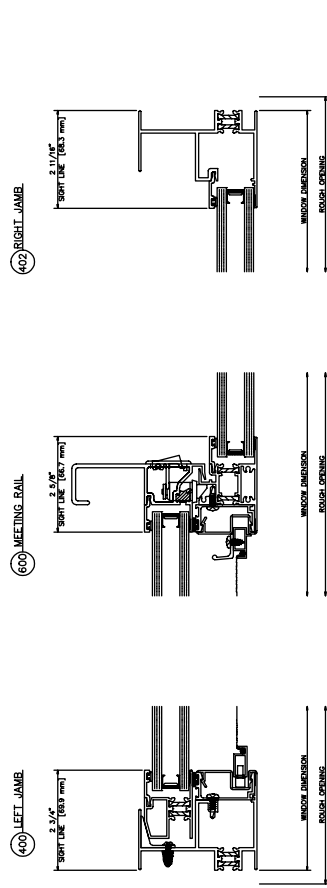
Illustration 3





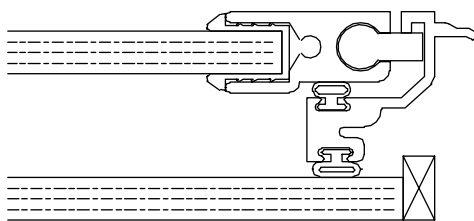


**3502 XOX**  
Inside Glazed



**3502 XO**  
Inside Glazed

ER65 - 1/4"  
INTERIOR PANEL  
1/4" MONOLITHIC



1/4"  
MONOLITHIC

