

Series 3500 Thermal • Series 3900 Fixed Thermal 3 1/4" Architectural Grade Horizontal Sliding Window



CONFIGURATIONS

XO • OX • XOX • OXO • XX • Fixed

Series 3500 retains an AAMA Architectural Grade rating to meet the most demanding specifications. Designed for high-rise residential, condos, educational or healthcare facilities, the 3500 window system is an attractive product for a wide range of applications. Multiple glazing options provide flexibility to meet specific design requirements. A thermal barrier in the frame and sash improves thermal performance enhancing energy saving potential. Offered with a complete line of sub frames, mullions and architectural sills, the 3500 window provides the complete solution for your fenestration needs.

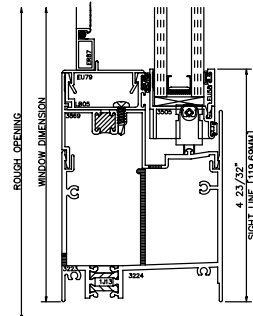
Features

Benefits

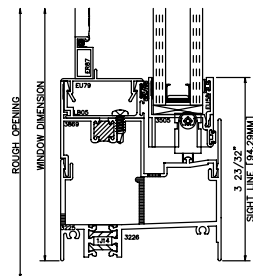
S3500 only - Extrusions are thermally improved	Enhanced thermal performance
Cam sash design and continuous interlock meeting rails	Yields superior air, water, and structural performance
Dual glazing	Improved energy savings
Sash glides on tandem steel ball bearing rollers over a raised sill track	The raised sill track minimizes the effect of dirt and debris build-up on the sill
Variety of locking and operating hardware	Allows flexibility in design
Three sill heights available	Water resistance performance customized to project requirements
Accommodates glazing from 1/8" to 1" depth	Expands design and energy saving options
Trim-All™ panning, frame extenders, interior trim and stools available	Allows old perimeter frame to remain in place Debris removal is minimized
Screen frames are extruded aluminum alloy are available	Stronger, more durable screens
Accessory line of subframes, mullions, and architectural sills	Allows custom designs with standard product
Anodized and painted finishes available	Multiple options to answer economic and aesthetic concerns



Series 3500 Thermal • Series 3900 Fixed Thermal 3 1/4" Architectural Grade Horizontal Sliding Window

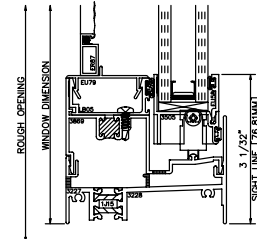


Maximum field water rating of 12lbs.



Maximum field water rating of 8lbs.

3500 SILL OPTIONS



Maximum field water rating of 6lbs.

PERFORMANCE DATA

S-3500 HORIZONTAL SLIDING WINDOW ARCHITECTURAL GRADE

AAMA RATING (NAFS-02)	HS-AW50
AIR INFILTRATION	<.10 CFM/SF @ 6.24 PSF
WATER	NO LEAKAGE @ 14.0 PSF
STRUCTURAL	±75.0 PSF
CRF-FRAME (1503-98)	55°
CRF-GLASS (1503-98)	62°

S-3900 CORRESPONDING FIXED ARCHITECTURAL GRADE

AAMA RATING (A440-05)	FW-AW75
AIR INFILTRATION	<.06 CFM/SF @ 6.24 PSF
WATER	NO LEAKAGE @ 15.0 PSF
STRUCTURAL	±112.5 PSF
CRF-FRAME (1503.1)	62°
CRF-GLASS (1503.1)	54°

- A = Estimated values and/or designations
- B = Non-standard size or configuration
- C = Dual glazed
- D = 1" Insulated - 1/4" clear, 1/2" air, 1/4" clear
- E = 1" Insulated - 1/4" clear (Low Emissivity), 1/2" air, 1/4" clear
- F = 1" Insulated - 1/4" clear (Low Emissivity), 1/2" argon, 1/4" clear
- G = 1" Insulated - 1/4" clear, 1/2" air, 1/4" clear (Low Emissivity)

3500 THERMAL U-FACTORS*		
CENTER OF GLASS U-FACTOR	CONFIGURATION AND SIZE	
	XO** 59" X 47"	XO 96" X 78"
0.47	0.63	0.51
0.34	0.54	0.46
0.29	0.50	0.42
0.25	0.48	0.39
0.20	0.44	0.35

3900 THERMAL U-FACTORS*		
CENTER OF GLASS U-FACTOR	CONFIGURATION AND SIZE	
	FIXED** 47" X 59"	FIXED 60" X 108"
0.48	0.54	0.51
0.34	0.42	0.39
0.28	0.37	0.34
0.24	0.34	0.31
0.20	0.31	0.27

* Based on NFRC 100
**NFRC Gateway size

S-3500 HARDWARE CHART	CONCEALED PLUNGER LOCK	SWEEP LOCK	AUTO JAMB LOCK	POLE RING SWEEP LOCK	POLE SOCKET	ACCESS CONTROLLED SWEEP HANDLE	ZINC PLATED STEEL BALL BEARING ROLLERS	STAINLESS PLATED STEEL BALL BEARING ROLLERS
HORIZONTAL SLIDING	S	O		O		O	S	O

Some size restrictions may apply depending on hardware selected.

O - Optional
S - Standard
Blank - N/A

HORIZONTAL SLIDING S-3500 & S-3550 GLAZING CHART	POLYCARBONATE		GLASS OR PANEL																	
	1/8"	3/16"	1/4"	1/8"	.156**	3/16"	.200**	1/4"	1/4**	1/2"	5/8"	3/4"	7/8"	1"	1-1/8"	1-1/4"	1-1/2"	1-3/4"	2"	
MONOLITHIC & INSULATED GLASS				A	A	A	A	A		A	A	A	A							
DUAL GLAZING	EXTERIOR LITE							A	A	A										
	INTERIOR LITE				A	A	A	A												

* Obscure glass thickness
** Laminated glass thickness

A - Available glazing option
I - Internal blinds can be used with this type of dual glazing
Blank - N/A



Series 3500 Thermal • Series 3900 Fixed Thermal 3 1/4" Architectural Grade Horizontal Sliding Window

Frame Construction

The frames have a depth of 3 1/4" and are constructed of 6063-T6 aluminum alloy. The nominal material wall thickness for the frame is .062", and the sill has a minimum wall thickness of .094". Three sill heights allow the designer to "customize" water performance to suit the needs of geographical wind load. Corners are of screw spline construction and sealed. See Illustration 1.

Sash Frame Construction

The sash consists of aluminum members with .062" nominal material wall thickness of 6063-T6 alloy. Sash verticals telescope into sash horizontals. Corners are of screw spline construction and sealed. Cam sash design and continuous interlock at the sash meeting rail offer superior weathering and structural performance. See Illustration 2.

Weather Stripping

The perimeter of the sash is weather-stripped with Q-Lon®. Two holes or slots through the window sill facilitate weepage.

Screens

Half screens are mounted inset within the window frame. Screen frames are extruded 6063-T6 aluminum alloy. 18 x 16 mesh screens are available in fiberglass and .011" diameter aluminum. 18 x 18 mesh screens are available in .009" diameter stainless steel.

Thermal Barrier

Head, jamb, and sash are thermally improved using the latest in two-part, high density, polyurethane. Sills are thermally isolated with two thermal struts, consisting of glass reinforced polyamide nylon, mechanically crimped in raceways extruded in the exterior and interior extrusions. See Illustration 3.

Hardware

Concealed plunger lock at sash meeting rail with a flush mounted actuating handle is standard. Optional sweep locks, access controlled sweep locks, pole ring sweep locks, and keepers are of cast white bronze with a US25D finish. The sash glides on steel ball bearing rollers over a raised sill track ensuring smooth operation and minimizing the effects of debris and dirt build-up on the sill. See the Hardware Chart for available hardware types.

Glazing

Windows are inside glazed with an extruded aluminum snap-in glazing bead. Glazings of 1/8" to 1" are accommodated. See the Glazing Chart for the exact size.

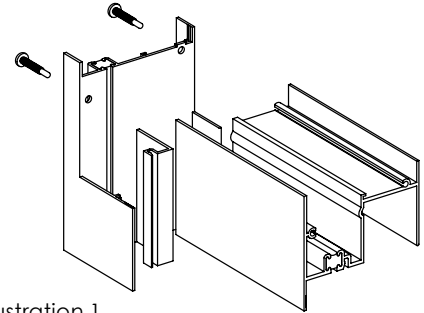


Illustration 1

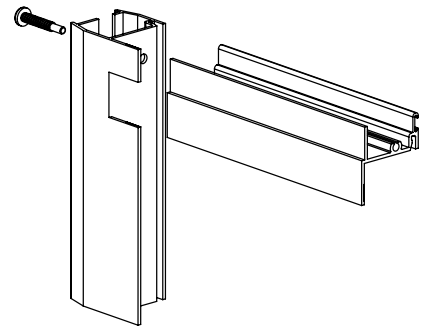


Illustration 2

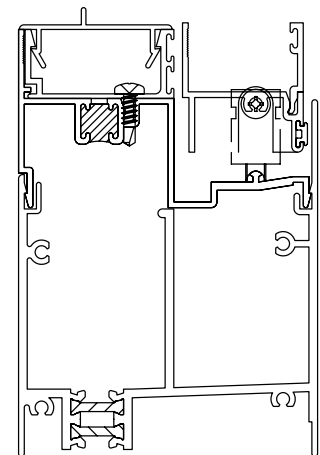
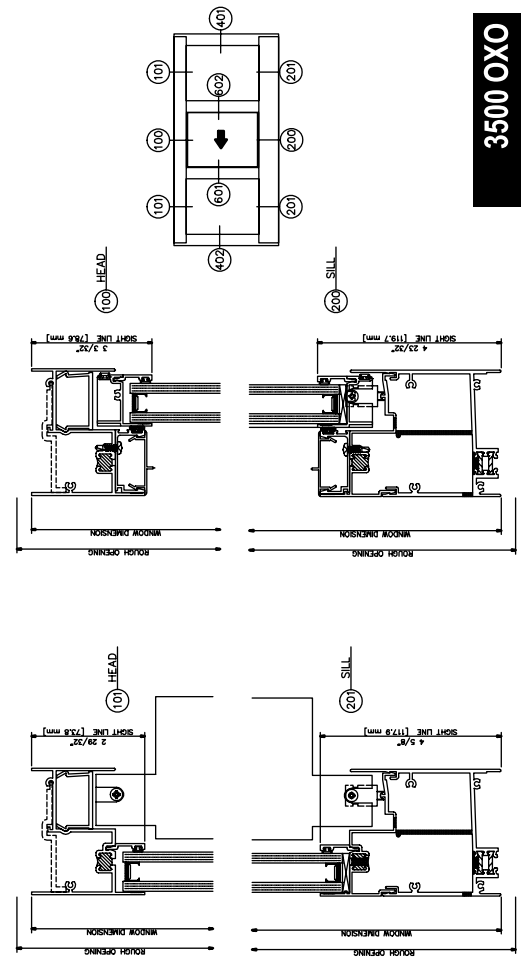
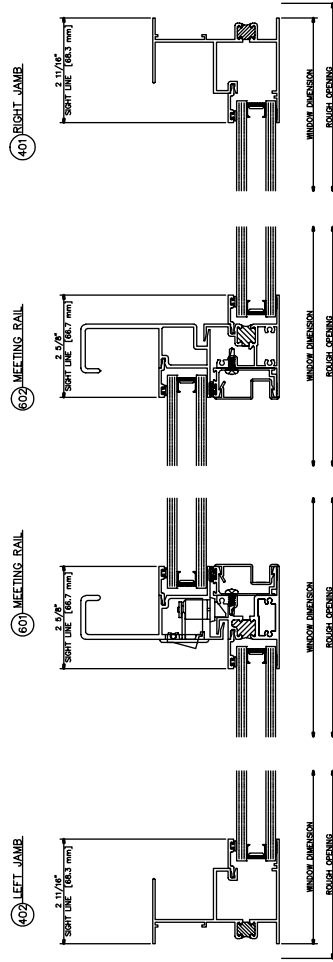
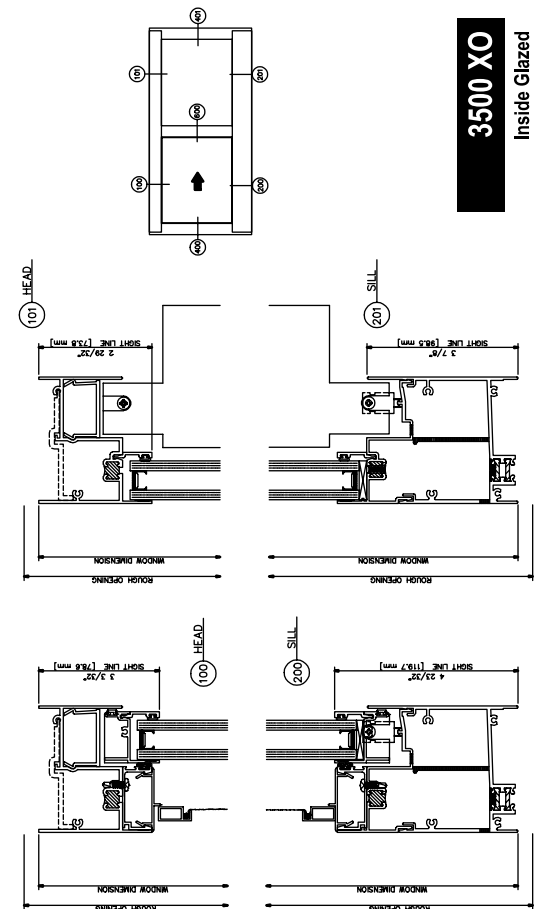
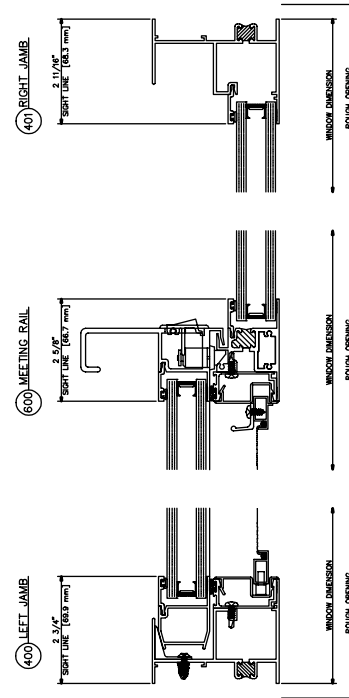


Illustration 3





3500 XO
Inside Glazed

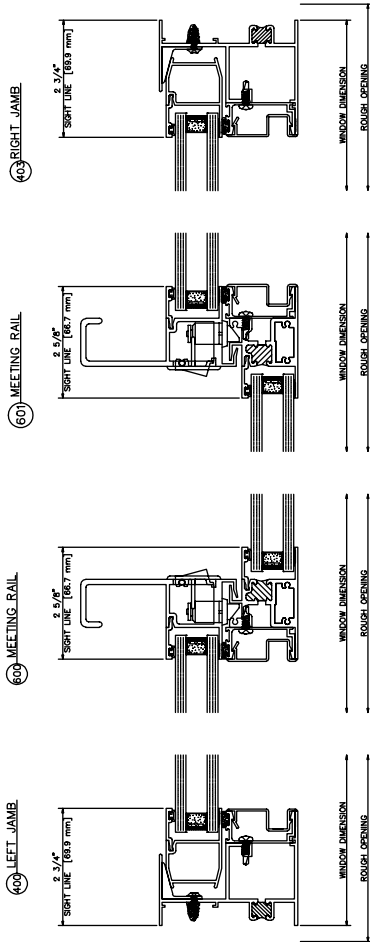


3500 OXO
Inside Glazed

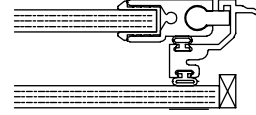
3500 Glazing

3500 XOX

Inside Glazed



ER65 - 1/4" INTERIOR PANEL 1/4" MONOLITHIC



1/4" MONOLITHIC

