

Series 2700

2" Heavy Commercial Projected Window



CONFIGURATIONS

Project-In • Project-Out • Casement In • Casement Out • Pivot • Fixed

Series 2700 retains an AAMA Architectural Grade rating to meet the most demanding specifications. Designed for educational, office or healthcare facilities, the 2700 window system is an attractive product for a wide range of applications. Multiple glazing options provide flexibility to meet specific design requirements. A thermal barrier in the frame and sash improves thermal performance, enhancing energy saving potential. Offered with a complete line of sub frames, mullions and architectural sills, the 2700 window provides the complete solution for your fenestration needs.

Features

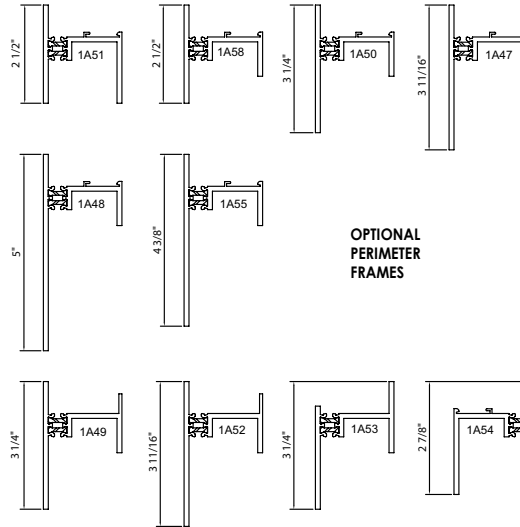
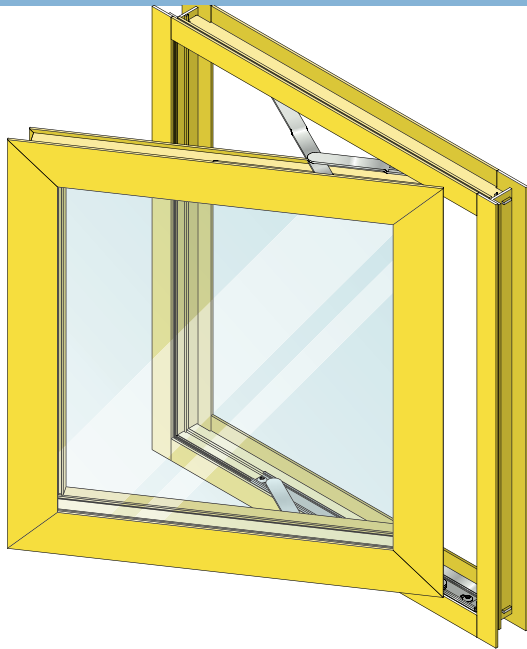
Benefits

E-Strut™ thermal isolator (Perimeter Frame)	Completely eliminates dry shrinkage Enhances energy savings potential Improves U-Value performance
Vertical or horizontal stacking members	Increases configuration options
Angle reinforced vent corners	Improves sash/vent rigidity
Dual glazing with optional integral blinds	Improved energy savings and interior light or privacy control with low maintenance
Pressure equalization	Superior water resistance
Wide variety of locking and operating hardware available	Permits hardware options to address specific requirements
Screen frames of extruded aluminum alloy are available	Stronger, more durable screens
Anodized and painted finishes available	Multiple options to answer economic and aesthetic concerns
Accessory line of subframes, mullions, and architectural sills	Allows custom designs with standard product



Series 2700

2" Heavy Commercial Projected Window



PERFORMANCE DATA

PROJECTED ARCHITECTURAL GRADE

AAMA RATING (NAFS-02)	AP-AW65
AIR INFILTRATION	<.10 CFM/SF @ 6.24 PSF
WATER	NO LEAKAGE @ 15.0 PSF
STRUCTURAL	±97.5 PSF
CRF-FRAME (1503-98)	54 ^E
CRF-GLASS (1503-98)	62 ^E

CASEMENT ARCHITECTURAL GRADE

AAMA RATING (NAFS-02)	C-AW100
AIR INFILTRATION	<.10 CFM/SF @ 6.24 PSF
WATER	NO LEAKAGE @ 15.0 PSF
STRUCTURAL	±150.0 PSF
CRF-FRAME (1503-98)	48 ^E
CRF-GLASS (1503-98)	61 ^E

A = Estimated values and/or designations
 B = Non-standard size or configuration
 C = Dual glazed
 D = 1" Insulated - 1/4" clear, 1/2" air, 1/4" clear
 E = 1" Insulated - 1/4" clear (Low Emissivity), 1/2" air, 1/4" clear
 F = 1" Insulated - 1/4" clear (Low Emissivity), 1/2" argon, 1/4" clear
 G = 1" Insulated - 1/4" clear, 1/2" air, 1/4" clear (Low Emissivity)

PIVOT HEAVY COMMERCIAL

AIR INFILTRATION	<.10 CFM/FT. @ 6.24 PSF
WATER	NO LEAKAGE @ 6.0 PSF
STRUCTURAL	±60.0 PSF
CRF FRAME (1503.1)	52 ^D
CRF-GLASS (1503.1)	52 ^D

2700 THERMAL U-FACTORS*				
CENTER OF GLASS U-FACTOR	CONFIGURATION AND SIZE			
	FX/PO 47" X 59"	FX/PO 60" X 108"	PO CSMT** 24" X 59"	PO CSMT 54" X 84"
0.47	0.60	0.54	0.63	0.56
0.34	0.51	0.44	0.55	0.46
0.29	0.48	0.40	0.52	0.42
0.25	0.45	0.37	0.49	0.39
0.20	0.42	0.33	0.46	0.35

* Based on NFRC 100
 **NFRC Gateway size

S-2700 HARDWARE CHART	BUTT HINGES	4-BAR ARMS	FRICTION ADJUSTER	KEY RELEASE LIMIT ARM	ROTOR OPERATOR*	CAM HANDLE	POLE RING CAM HANDLE	POLE RING PULL**	ACCESS CONTROLLED LOCK	LIFT LOCK
PROJECT-IN		S				S	O		O	
PROJECT-OUT		S				S	O		O	
CASEMENT INSWING WITH 4-BAR ARMS		S				S	O	O	O	
CASEMENT OUTSWING WITH 4-BAR ARMS		S				S	O		O	O
CASEMENT INSWIN WITH BUTT HINGES	S		O	O		S	O		O	
CASEMENT OUTSWING WITH BUTT HINGES	S		S	O	O	S	O		O	O
VERTICAL PIVOT						O	O		S	
HORIZONTAL PIVOT				S		O	O		S	

Some size restrictions may apply depending on hardware selected.
 * Casements requiring roto operators will be furnished with lift locks, providing vents meet minimum width requirements.
 ** Pole ring pull will be furnished on project-out vents when optional pole ring cam handle is selected.

O - Optional
 S - Standard
 Blank - N/A

S-2700		POLYCARBONATE			GLASS OR PANEL															
GLAZING CHART		1/8"	3/16"	1/4"	1/8"	.156"	3/16"	.200"	1/4"	1/4"	1/2"	5/8"	3/4"	7/8"	1"	1-1/8"	1-1/4"	1-1/2"	1-3/4"	2"
MONOLITHIC & INSULATED GLASS		A	A	A	A	A	A	A	A	A	A	A	A	A	A	A	A			
DUAL GLAZING	EXTERIOR LITE	I	I	I	I	I	I	I	I	I	I	A	A							
	INTERIOR LITE						A	A	A											

* Obscure glass thickness
 ** Laminated glass thickness

A - Available glazing option
 I - Internal blinds can be used with this type of dual glazing
 Blank - N/A



Series 2700

2" Heavy Commercial Projected Window

Main Frame Construction

The frame is constructed from .125" nominal material wall thickness aluminum of 6063-T6 alloy with a depth of 2". An equal leg frame is standard. Corners are mortise and tenon construction, and back sealed with small-joint seam sealer. See Illustration 1.

Vent Frame Construction

The 2" deep vent consists of tubular aluminum members with .125" nominal material wall thickness of 6063-T6 alloy. Vent corners are mitered, angle reinforced, crimped, cold epoxy welded, and back sealed with small-joint seam sealer. See Illustration 2.

Weather Stripping

All vents are dual weather-stripped with a dual Durometer Santorene® gasket. The exterior gasket is intentionally omitted at the vent bottom rail for project-out vents and at the vent top rail for project-in vents, allowing air to pressure equalize the void between the vent and frame. Each vent utilizes the pressure equalization technique for superior water resistance. Two holes or slots per vent through the window frame facilitate weepage.

Screens

Screen frames are extruded 6063-T6 aluminum alloy. Full width hinged wickets or fully hinged screens are available. 18 x 16 mesh screens are available in fiberglass and .011" diameter aluminum. 18 x 18 mesh screens are available in .009" diameter stainless steel.

Thermal Barrier

All perimeter frames are thermally isolated with two thermal struts consisting of glass reinforced polyamide nylon, mechanically crimped in raceways extruded in the exterior and interior extrusions. All vents and intermediate rails are thermally improved using the latest technology in two-part, high density polyurethane. See Illustration 3.

Hardware

Locking cam handles, access controlled locks, and keepers are of cast white bronze with a US25D finish. 4-bar hinges are fabricated of stainless steel meeting AAMA 904.1 requirements. Butt hinges are fabricated from extruded aluminum of 6063-T6 alloy with stainless steel pins. Pivots are fabricated from extruded aluminum and stainless steel pins. See the Hardware Chart for available hardware types.

Glazing

Windows can be inside or outside glazed with an extruded aluminum, snap-in glazing bead. Glazing of 1/8" to 1-1/4" can be utilized. Dual glazing is also available in 1/8", 3/16" and 1/4" glass. Aluminum blinds between the glass are available with dual glazed windows. See the Glazing Chart for exact size.

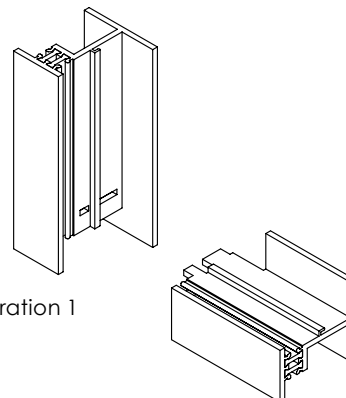


Illustration 1

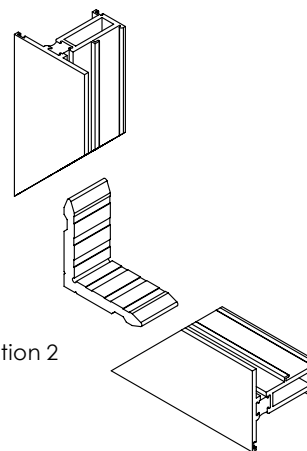


Illustration 2

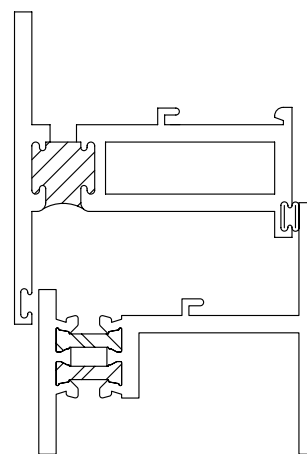
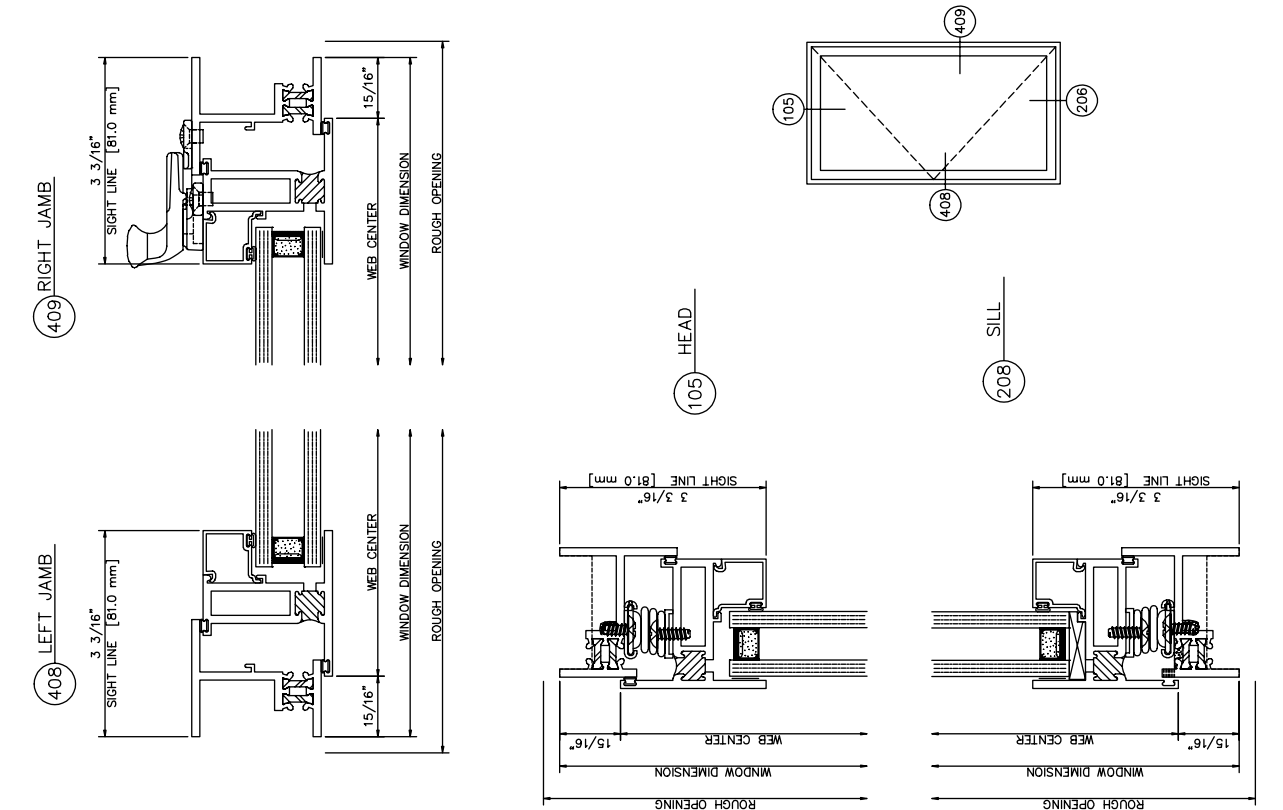
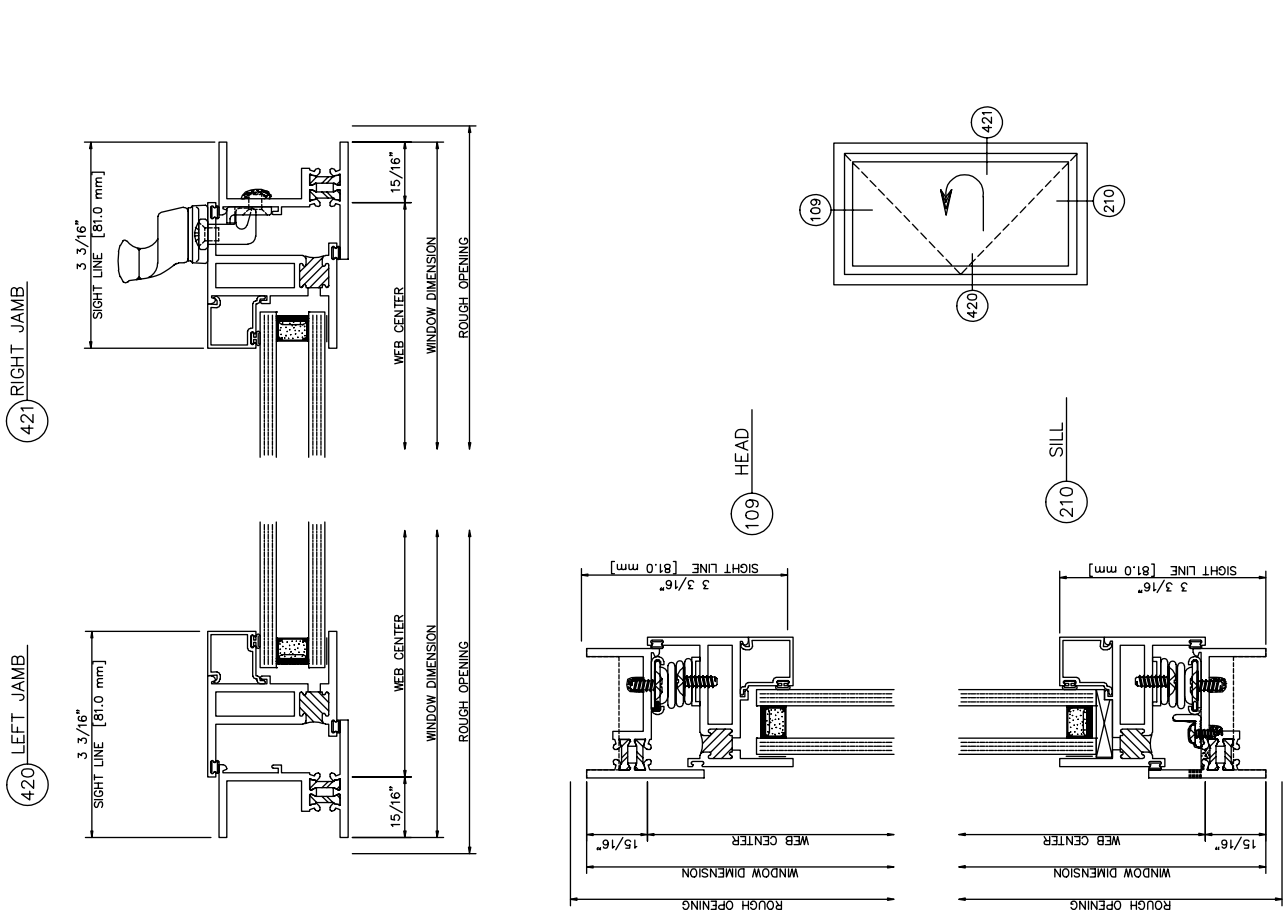


Illustration 3





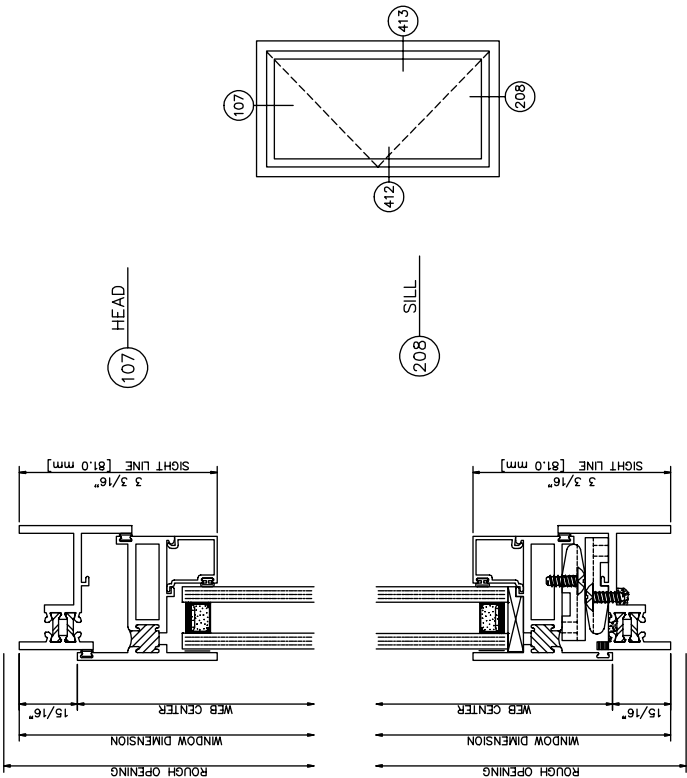
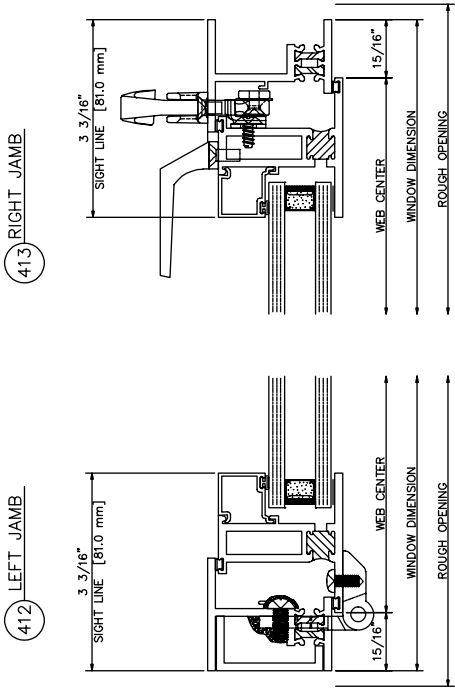
2700 Inside Glazed
Casement Out • Left Swing • 4 Bar Arms • Cam Locks



2700 Inside Glazed
Casement In • Left Swing • 4 Bar Arms • Cam Locks

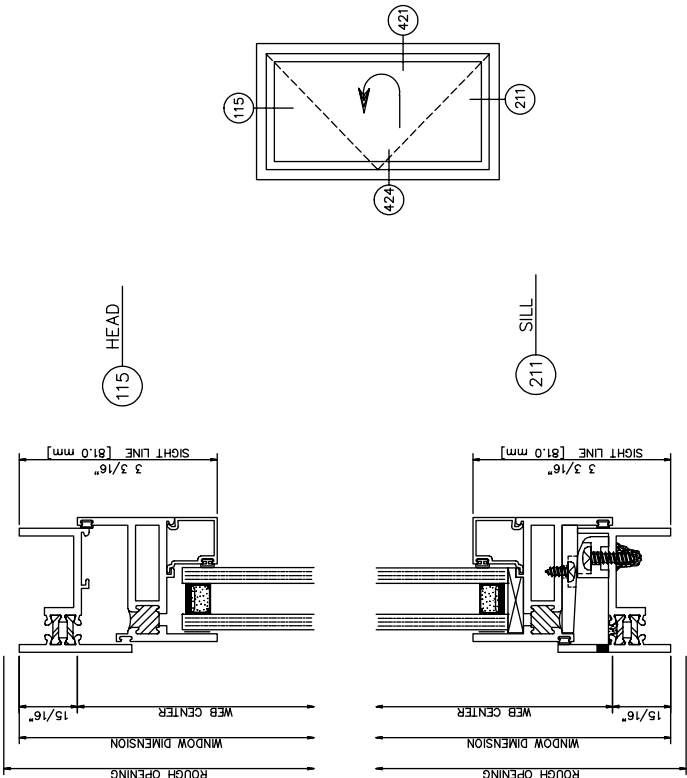
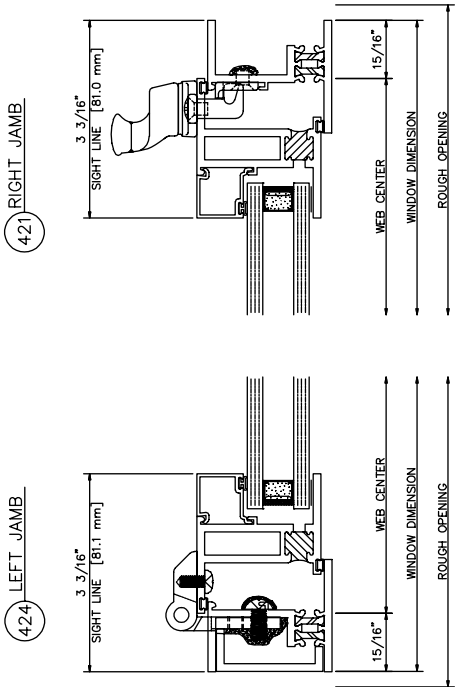
2700 Inside Glazed

Casement Out • Left Swing • Butt Hinges • Lift Locks • Pull Handles

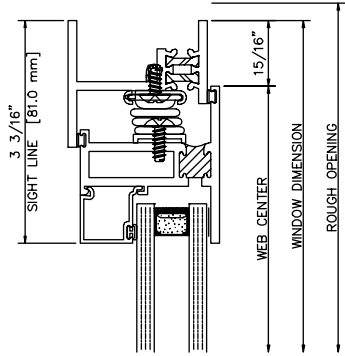


2700 Inside Glazed

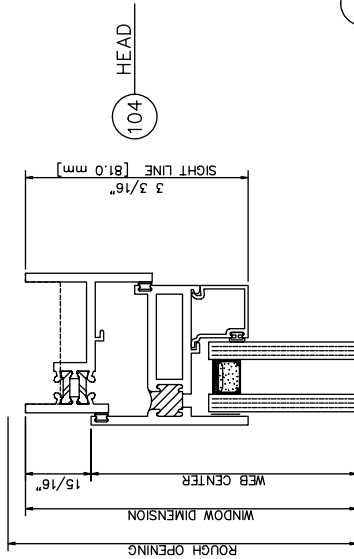
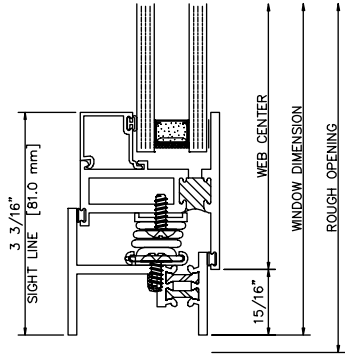
Casement In • Left Swing • Butt Hinges • Cam Locks



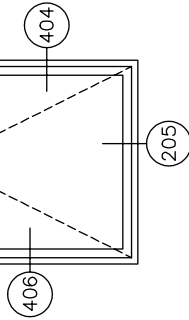
404 RIGHT JAMB



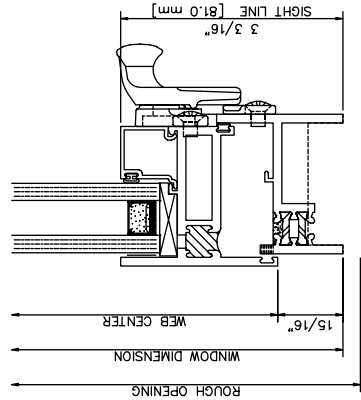
406 LEFT JAMB



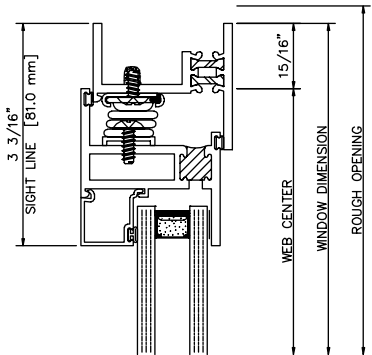
104 HEAD



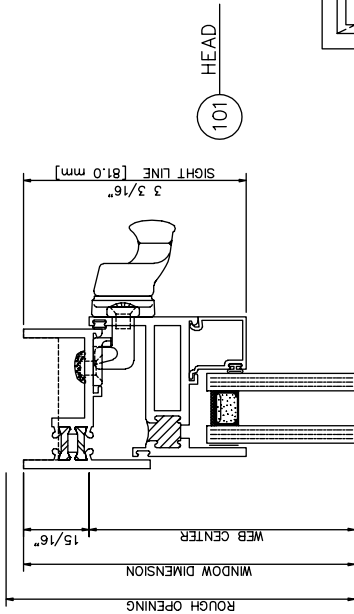
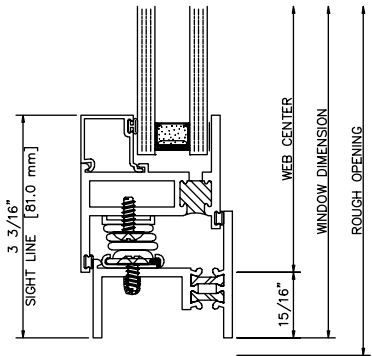
205 SILL



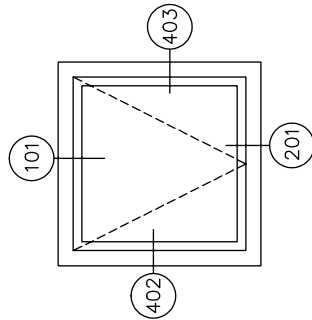
403 RIGHT JAMB



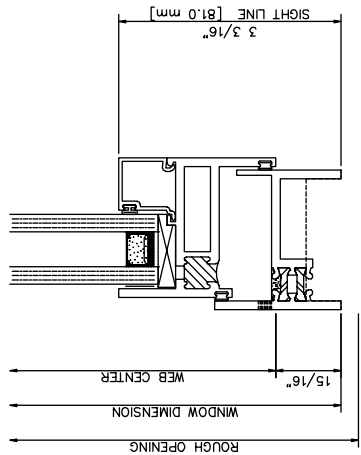
402 LEFT JAMB



101 HEAD



201 SILL



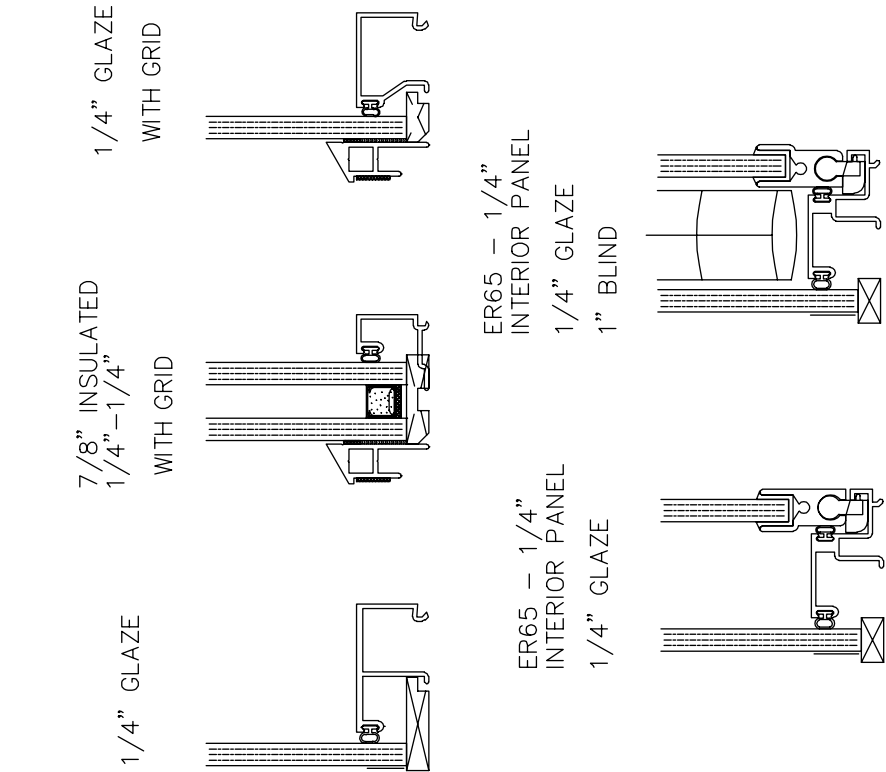
2700 Inside Glazed

Project Out

2700 Inside Glazed

Project In

2700 Glazing



2700 Inside Glazed

Fixed

