



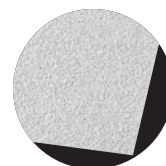
Back view of a **PRIVACY™** Speaker Panel installed in an **ULTIMA™** ceiling. The speaker is “invisible” from below.

Key Selection Attributes

- **Superior aesthetics** – “Invisible” speakers look like high performance ceiling panels, eliminating unsightly speaker grilles in the ceiling plane
- **Multiple applications** – Panels deliver music, paging and sound masking
- **High performance** – Quality sound with uniform distribution and broader coverage than conventional cone speakers – so less units may be needed for a given space
- **Flexibility and value** – Fast and easy “drop in” installation (no holes to cut) – with all-in-one speaker assemblies
- **Flat design** – Helps reduce conflicts in shallow or obstructed plenums

Typical Applications

- Office
- Conference and boardrooms
- Education
- Healthcare
- Retail and hospitality
- Transportation



OPTIMA and
ULTIMA

Choose one of three i-ceilings speaker models below to meet your application needs.*
The Privacy series is available in different grid faces and profiles.

APPLAUSE Series, A-50 Model

Superb, high fidelity sound performance for foreground music and sound reinforcement, as well as for paging and music in high ceiling environments.

Typical applications include conference and boardrooms, retail, hospitality, transportation, and education.

PRIVACY Series, P-25 Model

Delivers sound masking with more predictable performance than plenum-based systems.

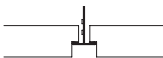
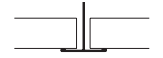
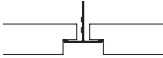
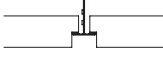

Used to improve speech privacy in office, government, healthcare and education settings.

Also delivers high quality paging and background music.

ESSENTIALS Series, E-5 Model

Economical choice for paging, masking and background music.

Used in corporate, retail, hospitality, education and healthcare settings.

PATTERN	GRID FACE	EDGE PROFILE	ITEM NUMBER	DIMENSIONS	COLOR	WEIGHT PER UNIT	WEIGHT PER CARTON	SPEAKERS PER CARTON
APPLAUSE Series, A-50 Model – Music/Sound Reinforcement								
OPTIMA/ULTIMA	9/16"	Tegular	6722	24 x 24 x 4.38"	White	11.5 lbs.	23.6 lbs.	2
								
PRIVACY Series, P-25 Model – Sound Masking/Paging/Background Music								
OPTIMA/ULTIMA	15/16"	Lay-in	6700B	24 x 24 x 2.75"	White	8 lbs.	19.9 lbs.	2
								
	15/16"	Tegular	6702B	24 x 24 x 2.75"	White	8 lbs.	19.9 lbs.	2
								
	9/16"	Tegular	6703B	24 x 24 x 2.75"	White	8 lbs.	19.9 lbs.	2
								
ESSENTIALS Series, E-5 Model – Sound Masking/Paging/Background Music								
OPTIMA/ULTIMA	9/16"	Tegular	6775	24 x 24 x 2.75"	White	9.3 lbs.	22.4 lbs.	2
								

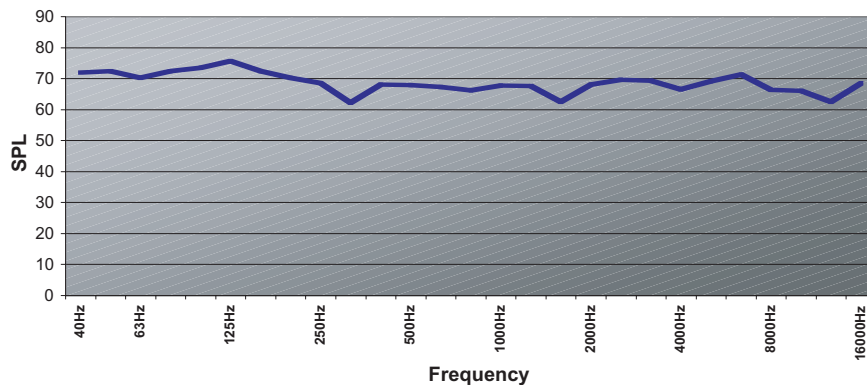
*Other patterns may be available as special orders with extended lead times.

Special Features

- Improved gain before feedback due to Distributed Mode Loudspeaker (DML) technology
- Each model comes with transformer selectable at 70V/25V or 8 ohm bypass

Frequency Response

APPLAUSE Series, A-50 Model



Technical Data

Maximum SPL (on axis free field):

98 dB @1m

Sensitivity (nominal):

84 dB @1w, 1m

Frequency Response (nominal):

50 Hz – 16 KHz +/- 6 dB

Transformer:

Selectable at 70V/25V or 8 ohm bypass

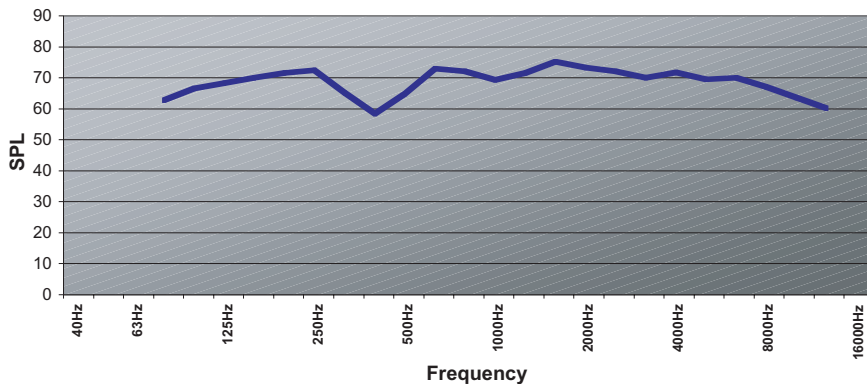
Power Rating:

30w

Tap Settings:

Three settings at 7.5w, 15w, and 30w

PRIVACY Series, P-25 Model

**Maximum SPL (on axis free field):**

89 dB @1m

Sensitivity (nominal):

83 dB @1w, 1m

Frequency Response (nominal):

100 Hz – 8 KHz +/- 6 dB

Transformer:

Selectable at 70V/25V or 8 ohm bypass

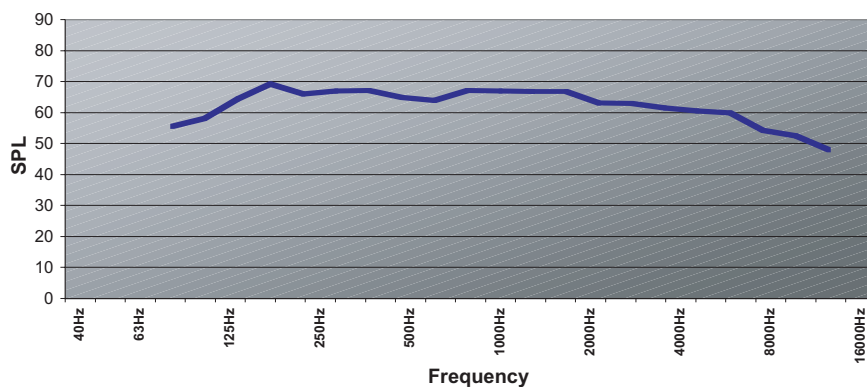
Power Rating:

4w

Tap Settings:

Five settings at 1/4w, 1/2w, 1w, 2w and 4w

ESSENTIALS Series, E-5 Model

**Maximum SPL (on axis free field):**

88 dB @1m

Sensitivity (nominal):

79 dB @1w, 1m

Frequency Response (nominal):

250 Hz – 6.3 KHz +/- 6 dB

Transformer:

Selectable at 70V/25V or 8 ohm bypass

Power Rating:

8w

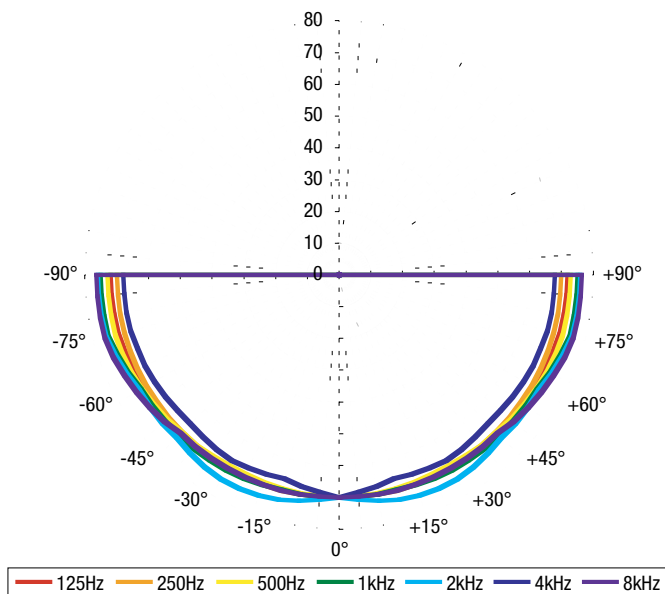
Tap Settings:

Six settings at 1/4w, 1/2w, 1w, 2w, 4w and 8w

Polar Response

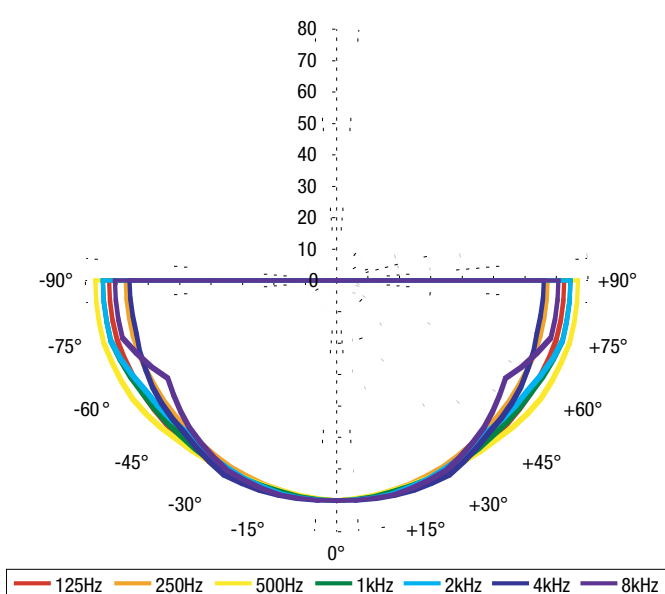
APPLAUSE Series

A-50 Model Polar Response



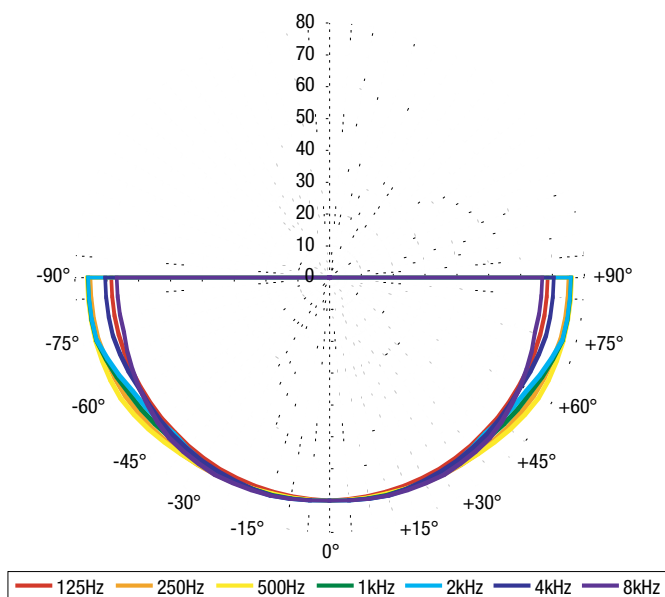
PRIVACY Series

P-25 Model Polar Response



ESSENTIALS Series

E-5 Model Polar Response



The **broad sound dispersion** represented here is based on our application of DML technology.

With better coverage, **fewer speakers may be needed** for typical applications.

Visit www.armstrong.com/i-ceilings to see 1/3 octave band polars at the octave band center frequencies for each model.

For technical assistance, contact **TechLine™** at **1-877-ARMSTRONG (276-7876)**.

Each speaker model approved under UL 2043 as Suitable for Use in Air-Handling Spaces. Protected by U.S. Patents No. 6,386,315; 6,481,173; 6,510,919; 6,779,627 and other pending patent applications. Features and specifications subject to change without notice. One-year limited product warranty.

TechLine™ / 1 877 ARMSTRONG
1 877 276 7876

armstrong.com/ceilings

CS-3455-1205

© AWI Licensing Company, 2005 • Printed in the United States of America • 10% post consumer waste. Printed with vegetable inks. ♻ Recyclable.

