



Key Systems Answer Book





Contents

4	Mechanical Lock Guide	16	Everest D Keyways
6	Schlage Keyway Guide	18	Everest C Keyways
8	Cores	20	Everest B Keyways
9	Key Systems Overview	24	Classic Keyway Family Overview and Classic Primus XP
11	Everest Keyway Family Overview	27	Classic Keyways and Small Format Interchangeable Core
13	Primus XP Key Control Levels		

Useful Definitions		
Keyways	Everest® <ul style="list-style-type: none"> Patented undercut groove on the right side of the key section D and B (SFIC) Family keyways are restricted C Family is the name of the open family of keyways 	Classic <ul style="list-style-type: none"> Schlage pin tumbler keyways which existed before Everest patented keyways Obverse is the name of the open family of keyways (C, E, etc.)
Cylinder Mechanisms	Primus® XP Cylinders <ul style="list-style-type: none"> Schlage's high security sidebar cylinder mechanism Patented key control Geographic exclusivity and pick resistance are standard UL437 drill resistance optional Also operate conventional cylinders 	Conventional Cylinders <ul style="list-style-type: none"> Traditional 5- or 6-pin tumbler method No secondary security mechanisms
Key Control	Restricted Keyways <ul style="list-style-type: none"> Keyways set aside for limited use and a higher degree of key control Letter of authorization or other verification method required to process orders for keys, blanks and cylinders 	Open Keyways <ul style="list-style-type: none"> C Family and Obverse keyways Available without any ordering formalities
Cylinder Category	Small Format Interchangeable Core (SFIC) <ul style="list-style-type: none"> Completely interchangeable with other manufacturers' SFIC cylinders and locks No Primus XP version exists Pins, springs, keys and keyways are based on a plug diameter smaller than 1/2" 	Full Size <ul style="list-style-type: none"> Based on industry standard plug diameter of 1/2" Available in standard or removable core

Put your trust in the name you know.

For more than 85 years Schlage® has been providing innovative security solutions for schools, hospitals, hotels, condominiums and a host of other commercial buildings. Today, Schlage is at the forefront of cutting edge technology such as wireless security, biometrics and CCTV. With a wide range of products, styles and finishes, Schlage has what you need no matter how demanding your application. And we stand behind every product we make with some of the best after-sales service in the business. It's this commitment to design, performance and technology that ensures you can stand behind our products too.



Schlage Mechanical Locks

 <p>S SERIES</p> <p>Tubular Locks</p>	 <p>S₂₀₀ SERIES</p> <p>Tubular Interconnected Locks</p>	 <p>A SERIES</p> <p>Cylindrical Locks</p>	 <p>H SERIES</p> <p>Cylindrical Interconnected Locks</p>
GRADE 2	GRADE 2	GRADE 2	GRADE 2
Security Level:			
ANSI/BHMA Certified A156.2-2003 400,000 ANSI Cycles Light Traffic	ANSI/BHMA Certified A156.12-2005 400,000 ANSI Cycles Medium Traffic	ANSI/BHMA Certified A156.2-2003 400,000 ANSI Cycles Medium Traffic	ANSI/BHMA Certified - 400,000 ANSI Cycles Medium Traffic
Typical Applications:			
- Interior - Retrofit	Exterior Interior New Construction Retrofit	Exterior Interior New Construction Retrofit	Exterior Interior - Retrofit
Functions Available:			
6 Functions - -	5 Functions - -	11 Functions - -	5 Functions - -
Design Options:			
7 Finishes 4 Lever Styles - 3 Decorative Options 1 Matching Rose - Tactile Warning Available	7 Finishes 4 Lever Styles - 3 Decorative Options 1 Matching Rose 1 Interior Escutcheon -	12 Finishes 1 Lever Style 4 Knob Styles 3 Decorative Options 1 Matching Rose - -	10 Finishes 1 Lever Style 2 Knobs Styles - 1 Matching Rose 1 Interior Escutcheon -
Often Used In:			
Commercial Multi-Family Office	Commercial Multi-Family Office	Commercial Healthcare Hospitality Office Retail	Commercial Govt/Military Multi-Family

Not all functions and finishes available with all products. Please consult your local sales representative for details.
This chart shows the most common uses/applications and these products are often used in other applications in addition to those listed.

<h1 style="font-size: 4em; margin: 0;">A</h1> <h2 style="font-size: 1.5em; margin: 0;">L</h2> <p style="font-size: 1.2em; margin: 0;">SERIES</p>  <p style="font-weight: bold; margin: 5px 0;">Cylindrical Locks</p>	<h1 style="font-size: 4em; margin: 0;">B</h1> <h2 style="font-size: 1.5em; margin: 0;">S</h2> <p style="font-size: 1.2em; margin: 0;">SERIES</p>  <p style="font-weight: bold; margin: 5px 0;">Deadbolts</p>	<h1 style="font-size: 4em; margin: 0;">D</h1> <h2 style="font-size: 1.5em; margin: 0;">S</h2> <p style="font-size: 1.2em; margin: 0;">SERIES</p>  <p style="font-weight: bold; margin: 5px 0;">Cylindrical Locks</p>	<h1 style="font-size: 4em; margin: 0;">N</h1> <h2 style="font-size: 1.5em; margin: 0;">D</h2> <p style="font-size: 1.2em; margin: 0;">SERIES</p>  <p style="font-weight: bold; margin: 5px 0;">Cylindrical Locks</p>	<h1 style="font-size: 4em; margin: 0;">L</h1> <h2 style="font-size: 1.5em; margin: 0;">S</h2> <p style="font-size: 1.2em; margin: 0;">SERIES</p>  <p style="font-weight: bold; margin: 5px 0;">Mortise Locks</p>
GRADE 2	GRADE 2 GRADE 1	GRADE 1	GRADE 1	GRADE 1

Security Level:

ANSI/BHMA Certified A156.2-2003 400,000 ANSI Cycles Medium Traffic	ANSI/BHMA Certified A156.5-2001 150,000/250,000 ANSI Cycles High Heavy Duty	ANSI/BHMA Certified A156.2-2003 800,000 ANSI Cycles High Traffic	ANSI/BHMA Certified A156.2-2003 800,000 ANSI Cycles Heavy Duty Traffic	ANSI/BHMA Certified A156.13-2005 1,000,000 ANSI Cycles Heavy Duty Traffic
---	---	---	---	--

Typical Applications:

Exterior Interior New Construction Retrofit	Exterior - New Construction Retrofit	Exterior Interior - Retrofit	Exterior Interior New Construction Retrofit	Exterior Interior New Construction Retrofit
--	---	---------------------------------------	--	--

Functions Available:

10 Functions - -	7 Functions X Functions - - - -	16 Functions - -	29 Functions 8 Electrified Vandlgard™ Available	42 Functions 3 Electrified Vandlgard™ Available
------------------------	--	------------------------	---	---

Design Options:

8 Finishes 4 Lever Styles - 2 Decorative Options 1 Matching Rose - Tactile Warning Available	9 Finishes - - - - - -	12 Finishes - 3 Knob Styles - 1 Matching Rose - -	7 Finishes 5 Lever Styles - 4 Decorative Options 2 Matching Roses - Tactile Warning Available	13 Finishes 24 Lever Styles 2 Knob Styles 20 Decorative Options 4 Matching Roses 3 Escutcheons Tactile Warning Available
--	--	---	---	--

Often Used In:

Commercial Healthcare Hospitality Office Retail	Commercial/Institutional Govt/Military Heavy Duty Residential Hospitality Office Retail	Institutional Govt/Military Hospitality Retail	Institutional Education Healthcare Office Retail	Institutional Education Healthcare Office
---	--	---	--	--

All Schlage locks can be ordered with any Schlage key system from patented Primus XP to Classic key systems.

Rev. 08/08



Schlage key systems deliver the right level of security everywhere you need it.

Whether you're retrofitting a hospital with an updated key system or implementing a key system for a newly constructed office complex, Schlage key systems deliver the flexibility and security you need at every level and throughout your building or campus.

Choose the Everest keyway for maximum protection against unauthorized duplication and a key system that may be configured specifically for your campus or facility. Choose the Classic keyway where less restriction is required as well as key system management versatility.

Schlage keyway guide.

Everest				
Family	Control	Type	Punchable	Primus
Everest D	Restricted	Full Size	Yes	Yes
Everest C	Open	Full Size	Yes	Yes
Everest B	Restricted	SFIC	Yes	No

Classic				
Family	Control	Type	Punchable	Primus
Obverse	Open	Yes	Yes	Yes

How do you choose the right key system for your application?

Schlage's Classic and Everest patented key systems offer a range of features and built-in protections against duplication. The key system that's right for you depends on the security level you need in your organization, the size of your facility, the complexity of your security needs and your financial requirements.

Whether you choose an Everest patented keyway or our Classic keyway, you may upgrade the level of security by adding the Primus XP feature. This exclusive, patented design provides extended protection against unauthorized duplication and can be used with both new key systems and those that are being upgraded.

- The newly designed Everest Primus XP is recommended for new key systems and for upgrading existing Everest key systems.
- Classic Primus XP cylinders are recommended for upgrading existing Classic key systems.
- Everest Primus XP can be mixed and matched with other Everest cylinders to provide the right level of security where you need it and within your budget.

	Patent Protection	Duplication Restrictions	Cores Availability	Primus Sidebar Security	Master Keying
Everest Primus XP	2024	Maximum	FSIC and Standard	Yes	All levels
Everest Primus	2014	Maximum	FSIC and Standard	Yes	All levels
Everest	2014	Some	FSIC, Standard and SFIC	--	All levels
Classic Primus XP	2024	Maximum	FSIC and Standard	Yes	Levels 1+, 2, 3, 4
Classic Primus	2007	Maximum	FSIC and Standard	Yes	Levels 2,3,4
Classic	--	--	FSIC and Standard	--	All levels

Cylinders and Cores

What is a standard cylinder?

A standard cylinder is one that requires some breakdown of the lock in order to be removed. These are the most commonly used cylinders. Because standard cylinders are manufacturer-specific to the lock and lock type, they cannot be exchanged for another in most cases. However, standard cylinders can be keyed alike or master keyed so that you can use just one key for multiple locks if needed. They are best suited for light commercial applications with a small number of users, such as retail stores and small offices, as well as residential applications that do not require frequent change of cylinders.

Only Schlage provides 6-pin Everest cylinders in the C123 keyway with two patented keys standard for stock. C145 is standard for new master key systems.

This type of core is most common in these types of locks/trims:



What is a removable core?

A removable core is one that can be removed with a control key without the need to take apart the lock or to use any other tools. You can identify a removable core easily because it looks similar to a figure 8. These types of cores may be Full Size Interchangeable Core (FSIC) or Small Format Interchangeable Core (SFIC). The FSIC is in most cases manufacture specific core that cannot interchange with other manufacturers. The SFIC is a universal size core that can be interchanged with all other SFIC cores and products.



Schlage offers both types of cores.

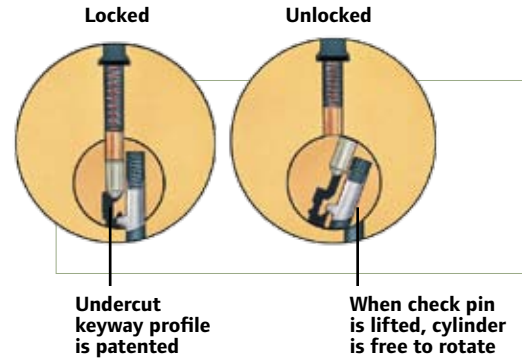
These types of cores are best suited for larger commercial key systems with multiple levels of security and a very large number of users or applications where it is time consuming to perform a traditional cylinder change (exit devices, certain types of all-glass doors, etc.). IC cores make fast re-keying by non-technical personnel possible and can be integrated into an existing key system, or built into a new key system to allow for future growth. Common applications include hospitals, universities, large office complexes and financial institutions.

Key Systems

What is Everest?

Everest is Schlage's keyway with a patented undercut groove. The patented design prevents others from manufacturing and distributing Everest key blanks. Multiple levels of security ensure that you get the right solution throughout your facility or campus.

Everest keys work by lifting the check pin when the key is inserted into the cylinder, allowing the key to turn and the lock to open. This patented interaction between the key and the cylinder ensures the integrity of the system at every opening.



New and existing systems.

Schlage will help you design a system that can grow and change along with your needs, allowing you the flexibility to upgrade your security without the need to replace all your cylinders.

What it operates	What it is
<ul style="list-style-type: none"> • Everest Primus XP cylinders • Everest restricted or Everest open cylinders 	<p>UL437 Version</p> <ul style="list-style-type: none"> • UL437 versions provide drill and pick resistance and withstand physical attack • High security cylinders have a second set of pins for added security • Patented key control sold with various levels of geographic exclusivity • Keys operate high security, as well as restricted security or standard security cylinders • Available only in conventional and FSIC
<ul style="list-style-type: none"> • Everest Primus XP cylinders • Everest restricted or Everest open cylinders 	<p>Controlled Access</p> <ul style="list-style-type: none"> • Patented key control sold with various levels of geographic exclusivity • High security cylinders have a second set of pins for added security and pick resistance • Keys operate high security, as well as restricted security or standard security cylinders • Available only in conventional and FSIC
<ul style="list-style-type: none"> • Everest restricted cylinders 	<ul style="list-style-type: none"> • Key distribution is restricted — duplication must be authorized • End user's ID numbers are stamped on all keys, enabling Schlage to identify the source of any unauthorized keys • Patent-protected keys are drop-shipped from the factory directly to an end-user specified location to guarantee exclusivity • Available in conventional, SFIC and FSIC
<ul style="list-style-type: none"> • Everest open cylinders 	<ul style="list-style-type: none"> • Patented key blanks can be stored by commercial locksmiths and security dealers • Keys can be duplicated without any paperwork or signature verification • Sold only through commercial outlets • Available in conventional and FSIC



What it is

UL437 Version

- UL437 versions provide drill and pick resistance and withstand physical attack
- High security cylinders have a second set of pins for added security
- Patented key control sold with various levels of geographic exclusivity
- Keys operate high security, as well as restricted security or standard security cylinders
- Available only in conventional and FSIC



PRIMUS XP
HIGH SECURITY

What it operates

- Primus XP cylinders
- Classic cylinders

What is Classic?

Schlage Classic keyways provide security that ranges from limited geographical exclusivity for keys that include Primus XP to basic security with no restriction on duplication. The Classic keyway can be divided into two families with varying levels of protection against duplication.

Controlled Access

- Patented key control sold with various levels of geographic exclusivity
- High security cylinders have a second set of pins for added security and pick resistance
- Keys operate high security, as well as restricted security or standard security cylinders
- Available only in conventional and FSIC

- Primus XP cylinders
- Classic cylinders

Existing key systems.

Schlage offers key systems that are ideal for upgrading an existing key system and regaining control over key management. Our patent-protected cylinders help prevent unauthorized duplication and can be integrated into virtually any existing system.

- Keys can be duplicated at most retail and commercial points of sale with no restrictions
- Recommended only for residential applications or existing commercial systems that cannot rekey
- Can be upgraded to Primus XP without rekeying the entire facility
- Available in conventional and FSIC

- Classic cylinders



CLASSIC
BASIC SECURITY

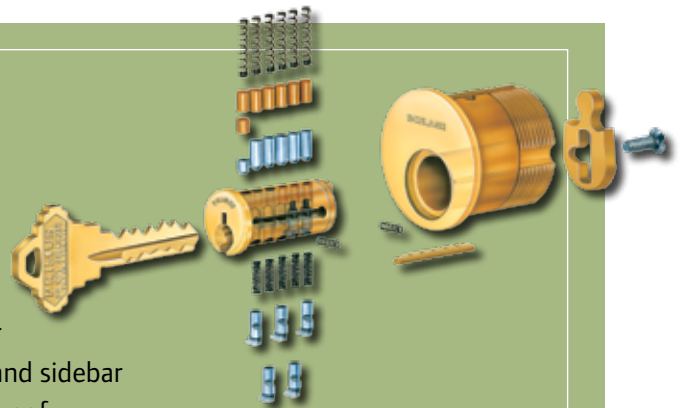
What is Primus XP?

Primus XP is a patented side bit milling that precisely aligns five finger pins at a sidebar in the cylinder. This unique side biting makes unauthorized duplication virtually impossible and is also used to create geographically exclusive keys in a thousand available combinations. In addition to a conventional pin tumbler mechanism, Primus cylinders incorporate a patented finger pins and sidebar design, providing a “dual locking” cylinder that is virtually pick-proof.

Primus XP technology can be used to upgrade an Everest or Classic system to a high-security cylinder. Resistance to drilling and other physical attack is optional by specifying 20-500 Series UL437 Listed cylinders.

What is UL437?

The primary function of the UL437 standard is to certify that a cylinder is pick and drill resistant and can withstand extreme physical attacks. Primus UL437 Listed cylinders have a series of hardened steel drill pins added to our already pick-resistant Primus cylinders. Since this adds cost to the cylinder for a feature that many customers don't require, Schlage leaves the cylinder choice up to you.



The Everest patented keyway family.

Everest patented keyways provide the highest levels of protection against unauthorized key duplication. Their patented design prevents non-authorized sources from manufacturing and distributing Everest key blanks. Our Everest key systems are suited for both new and existing key systems, and give you the flexibility to expand and upgrade your key system as your needs change.

Everest
Everest D
Everest C
Everest B
Classic
Obverse

What is Everest Primus XP?

The highest level of keyway security, Everest Primus XP keyways are distributed under careful protection guidelines to protect the exclusivity of the individual side bit milling patterns. Choose Everest Primus XP when the highest level of security and protection against unauthorized duplication is needed.

- Geographic exclusivity on key blanks
- Multiple patents protect against unauthorized key manufacture through July 2024
- Pick- and rake-resistant design
- Can be mixed and matched with non-Primus XP cylinders
- All key sections and master keying available at all levels of security
- Keys can be combined using commonly available pin kits and key cutting equipment
- Keys are quick to cut and cylinders are easy to pin
- Thicker keys for added strength
- Three-year product warranty and a limited life-time warranty against key breakage
- Operates Everest Primus and Everest restricted cylinders

Consider Everest Open for Commercial Security		Typical Applications
<p>End-User Exclusive</p> <ul style="list-style-type: none"> • Side bit milling assigned to and owned by end user • Exclusivity assigned randomly based on a national pool of available combinations, the first two digits of the zip code, by time zone or nationwide, depending on usage 	LEVEL 9	<p>End User Exclusive</p> <ul style="list-style-type: none"> • Educational Facilities • Healthcare Facilities • Large Office Complexes • Government Buildings • Detention Centers • Franchises
<p>Dealer Exclusive</p> <ul style="list-style-type: none"> • Dealers that sell directly to end users are eligible for side bit milling exclusivity • Exclusivity is for the dealer's physical location time zone • Sole-source relationship between end-user and originating dealer 	LEVEL 8	<p>Dealer Controlled</p> <ul style="list-style-type: none"> • Strip Mall Shops • Small Businesses • Upscale Homes • Small Businesses • Restaurants • Doctor's Offices • Office Buildings • Banks • Private Schools • Healthcare Residences
<p>Dealer Exclusive</p> <ul style="list-style-type: none"> • Owned and stocked by dealers • Resold to end users • Sole-source relationship between end-user and originating dealer • Keys bear unique dealer ID based on first three digits of zip code • Exclusivity of side bit milling also based on zip code 	LEVEL 7	

Everest Primus XP keyways at a glance.

Key machines.

Everest C family Primus and conventional keys can be cut on the popular Blue Punch for Schlage, even if it is an old machine. However, most C family key sections need top jaw upgrade kit 40-074.

The Blue Punch will still cut conventional and Primus keys after the conversion. Pro-Lok™ Blue Punches of serial number 990358 and higher do not need the upgrade kit.

You can also use rotary cutter key machines to make all types of Schlage keys. Standard Schlage depths and spacing are used for Everest Primus XP, so there are no new settings for code machines.

Pin kits.

Use any existing Schlage commercial pin kit for the six conventional pin chambers and Primus pin kit 40-070 for the finger pins.

Distribution.

Primus XP is sold only through Schlage's commercial channel. See description of the various key control levels for specifics.

Sample cylinders.

The keyway for Everest sample cylinders is C123 and one Primus XP side bitting is reserved for samples. Primus XP sample keys operate conventional sample cylinders of the same keyway.

Details.

For cylinder servicing and more details on key control procedures, see the Schlage High Security Cylinders & Key Control Service Manual.

Primus XP dealer controlled levels.

When you upgrade your key system to Primus XP, you automatically move up to one of our three highest security levels, 7, 8 or 9. These levels offer different methods of distribution and purchasing that are important to understand when choosing a key system that meets your needs for flexibility, security, and ongoing service and maintenance.

Dealer-controlled Levels:

Level 7 - Zip Code Exclusivity Based on First Three Digits

Dealer invests in a side biting that will be exclusive to him defined by the first three digits of the locksmith's physical location zip code. Dealers sign an appropriate agreement that ensures the integrity of the system and, among other things, prohibits the dealer from cutting other dealers' keys. Each dealer is assigned a unique ID number that is stamped on all keys. Dealers can purchase products and keys from any Schlage authorized Primus distributor.

The dealer then issues an ID card to each end user and verifies orders for duplicate keys against the signature panel on the card.

This is a sole source level similar to Classic Primus XP Level 1 Plus. End users must come back to the originating Level 7 locksmith for keys.

Highlights of Primus XP Level 7:

- Dealer-owned sidebit milling exclusivity based on the first three digits of zip code
- Dealer can purchase products from any Schlage Primus XP authorized dealer
- Available to direct and indirect dealers
- Key blanks are not available to end users
- End user must purchase from originating dealer – sole-source relationship

To set up a new dealer:

- Submit a Classic Primus XP Level 7 (and Level 1+) signed agreement
- Have Ingersoll Rand local sales management sign and approve the agreement
- For dealers who are new to Primus, submit purchase order of a total of \$7,500 (list) to cover both Classic and Everest Primus inventories
- For existing Primus dealers, submit purchase order of a total of \$5,000 (list) to cover both Classic and Everest Primus inventories

Re-ordering dealer needs to:

- Provider dealer ID and key section with order
- Primus key will always be drop-shipped to dealer location

Level 8 - Time Zone Exclusivity

Direct and indirect dealers with aftermarket service and large locksmith companies buy in for a side biting exclusive within a time zone. They sell product with this side biting to their end user customers. Schlage assigns an ID number to the participating dealer. The dealer must sign a key control contract that, among other things, prevents the dealer from cutting keys bearing another dealer's ID number.

The dealer then issues an ID card to each end user and verifies orders for duplicate keys against the signature panel on the card.

This is a sole source level similar to Classic Primus XP Level 2. End users must come back to the originating Level 8 dealer for keys. The indirect dealers can purchase products from any Schlage authorized distributor.

Highlights of Primus XP Level 8:

- Dealer-owned sidebit milling exclusivity based on the time zone
- Dealer can purchase products from any Schlage Primus XP authorized dealer
- Available to direct and indirect dealers
- Key blanks are not available to end users
- End user must purchase from originating dealer sole-source relationship

To set up a new dealer:

- Submit a Classic Primus XP Level 8 (and Level 2) signed agreement
- Have Ingersoll Rand local sales management sign and approve the agreement
- For dealers new to Primus, submit purchase order of a total of \$25,000 (list) to cover both Classic and Everest Primus inventories

Re-ordering dealers need to:

- Provide dealer ID and key section with order
- Primus keys will always be drop-shipped to dealer location
- For existing Primus dealers, submit a purchase order of a total of \$15,000 (list) to cover both Classic and Everest Primus inventories

Level 9 - End User Exclusive

This level is for end users who may want to cut their own keys and/or must be able to obtain competitive bids on subsequent additions to their Everest Primus XP key system. Level 9 is subdivided to provide varying degrees of side biting exclusivity, depending on the amount of cylinders purchased.

- Level 9U (Universal) – End user buys fewer than 60 cylinders and may share a side biting with another small end user in the same area
- Level 9G (Geographical) – End users buys 60 cylinders or more; Schlage assigns a side biting exclusive within the first two digits of the end user's zip code
- Level 9Z (Time Zone) – End users buys a minimum of 2,000 Primus XP cylinders over a two-year period or buys the exclusivity outright; Schlage assigns a side biting exclusive within the end user's time zone. Inventory must be maintained over two years or pay a fee
- Level 9N (Nationwide) – End user buys a minimum of 4,000 Primus XP cylinders over a two-year period or pays for the exclusivity outright; Schlage assigns a nationwide exclusive side biting

The end user is free to purchase Level 9 Primus XP products from any Schlage Primus XP dealer nationwide, rather than being tied to a sole source dealer. All Level 9 key systems require a Primus XP signature card to be submitted initially and a Primus XP Face Sheet to accompany every order. Schlage's Key Control Department verifies the signature for each Level 9 order.

Level 9 is comparable to Classic Primus XP Levels 3 and 4.

Highlights of Primus XP Level 9:

- Sidebit milling assigned to end user, not dealer, based upon commitment level
- End user is not tied to originating dealer, but can purchase from any Schlage authorized Primus dealer
- Key blanks are available for end user only
- Face sheet is required for each subsequent order

To set up a new Primus account:

- Submit signed signature sheet
- Submit signed face sheet
- Submit an order with the above two items

Re-ordering customers need to:

- Submit signed face sheet and specify key section with order

Everest D keyway – end user restricted security.

Everest keyways provide a high level of security, with authorization required for key duplication. Everest restricted key systems are ideal when there is a significant need to eliminate unauthorized duplication by lock shops, and hardware and home centers.

Everest D keys must be ordered from the factory through a highly controlled validation process. Each facility is assigned with a unique code, which is stamped on each key provided to ensure optimum security.

- Available to end users only with distribution controlled by Schlage
- No geographical exclusivity
- End user facility code is stamped on all keys for tracking purposes
- Key blanks are available to end users only
- End user is not tied to originating dealer – can purchase from any Schlage authorized dealer
- Letter of authorization is required for originating order and any subsequent order that requires change of address or supplier

To set up a new dealer:

- Submit purchase order with attached signed Letter of Authorization (LOA)

Re-ordering customers need to:

- Provide LOA only if supplier name or shipping address is different from original LOA
- Specify facility code and key section on order

D family keyways at a glance.

End user restricted full size keyways.

Schlage restricted keyways are for end users – they are not for dealer programs. Keyways and key sections in the Everest D family are named with a “D” followed by three digits, such as D123. Restricted keyways are not shown for security reasons, but their ten keyways are similar to those of the C family (see page 20).

Cylinders with Everest D family keyways are 6-pin and cannot be interkeyed with any 5- or 7-pin products. In addition, Everest D keys can be used to open D keyways, but cannot be used to open Everest Primus XP locks with a D keyway.

Everest D cylinders can be stocked by commercial distribution channel less keys, for quick delivery time to end user, as sub-assembled (all cylinders type) or 0 bitted for FSIC.

Everest

Everest D

Everest C

Everest B

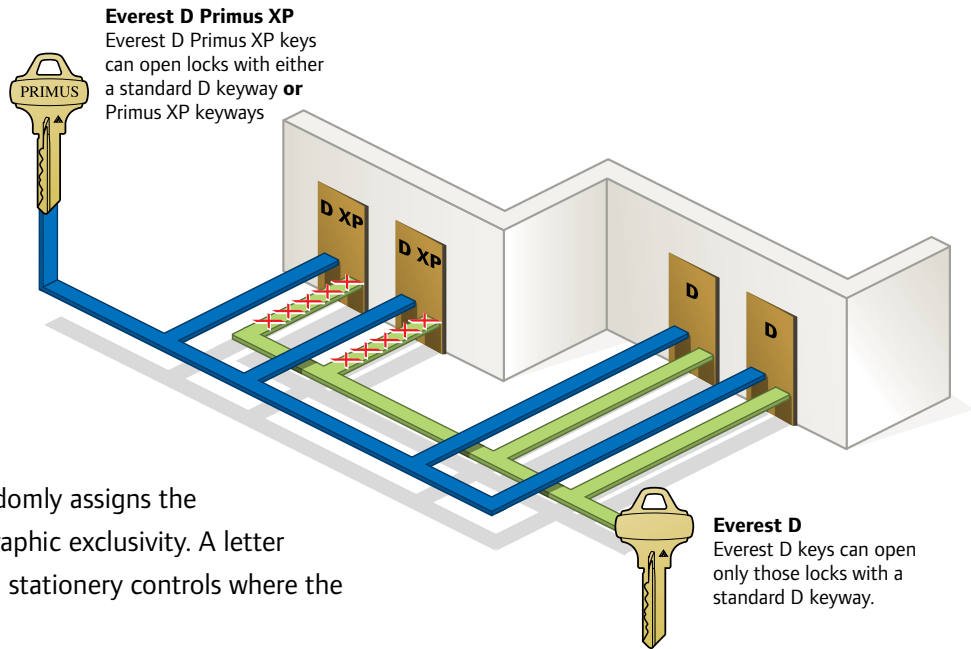
Classic

SFIC Open

Key control.

All Everest D family keys are protected against unauthorized manufacture and distribution by U.S. utility patents 5,105,717 and 5,809,816 until July 2014. These keyways offer substantial key control at a mid-price point between conventional cylinders and Primus XP high security cylinders.

The Schlage Master Key Department randomly assigns the keyway(s) for each job. There is no geographic exclusivity. A letter of authorization on the end user's official stationery controls where the restricted material is sent.



Establishing a new key system.

Restricted keyways are reserved for large key systems. A letter of authorization on the end user's official stationery must be submitted with the initial order to establish the authorized ship-to location.

Ordering products for existing systems.

Restricted keyway locks, cylinders and blanks on subsequent orders will be drop-shipped to the location originally specified by the end user. Any order that must be shipped to a different destination or change of supplier requires a letter of authorization on the end user's official stationery.

Key machines.

Factory provides key blanks which can be cut on key punch #40-099, or use rotary cutter key machines to duplicate these keys or cut them by code. Standard Schlage depths and spacing are used, so there are no new settings for code machines.

Pin kits.

Cylinders with D family keyways are compatible with all existing Schlage pin kits. However, Schlage recommends purchasing a pack of 34-007 check pins and C603-951 check pin springs to replace these two Everest components should they get lost during servicing.

Distribution.

Available to Schlage commercial end user customers only.

Sales sample cylinders.

Restricted keyways are not available as sample cylinders. However, the key and mechanism can be evaluated with an Everest C family sample. The only difference is the shape of the keyway.

Primus XP high security cylinders.

Everest Primus XP cylinders are available in D family keyways at Level 9 only

Everest C keyway – standard security.

Everest open keyways provide limited key control, but are protected by patents that prevent unauthorized duplication. They are best suited for applications where fast and easy key duplication is required and no restriction or tight key control is required.

- Keys can be duplicated without end-user authorization
- Patented blanks can be stored by commercial locksmiths and security dealers
- Not sold to residential/retail outlets
- Operates Everest C (open) cylinders only

Everest
Everest D
Everest C
Everest B
Classic
SFIC Open

C family full size open keyways at a glance.

The keyways and key sections in this family are named with “C” followed by three digits, such as C145. C was chosen because of the marketing similarity to Schlage’s common non-restricted Classic C keyway. There are ten keyways and many multi-section keys in this multiplex family.

Cylinders with Everest C family keyways are 6-pin and cannot be interkeyed with any 5- or 7-pin products. Primus XP high security cylinders are available in these keyways. The side biting makes all Primus XP keys restricted.

Key Control

Everest C family keyways should be sold where the end user needs easy local key duplication, the same as where Classic key sections have been sold. Although Everest C family keys are covered by the same patents as Everest restricted keys, they are openly available to locksmiths, contract hardware dealers, etc. Keys stamped DO NOT DUPLICATE are available as an option.

Establishing a new key system.

C145 is the default keyway for new Schlage master key systems. Additional keyways are used to expand systems which need more than one keyway.

Key machines.

Everest C family keys can be cut on the popular Blue Punch for Schlage, even if it is an old machine. However, most key sections need top jaw upgrade kit 40-074. The Blue Punch will still cut conventional and Primus Classic (obverse) after the conversion. Pro-Lok Blue Punches of serial number 993058 and higher do not need the upgrade kit. You can also use rotary cutter key machines to duplicate these keys or cut them by code. Standard Schlage depths and spacing are used, so there are no new settings for code machines.

Pin kits.

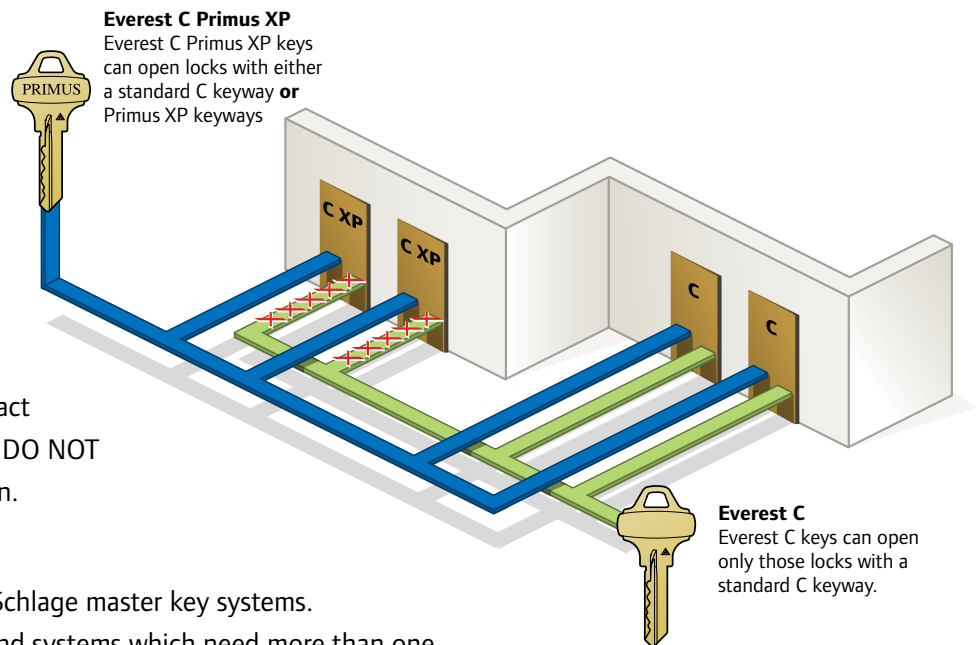
Cylinders with C family keyways are compatible with all existing Schlage pin kits. However, Schlage recommends purchasing a pack of 34-007 check pins and C603-951 check pin springs to replace these two Everest components, should they get lost during servicing.

Distribution.

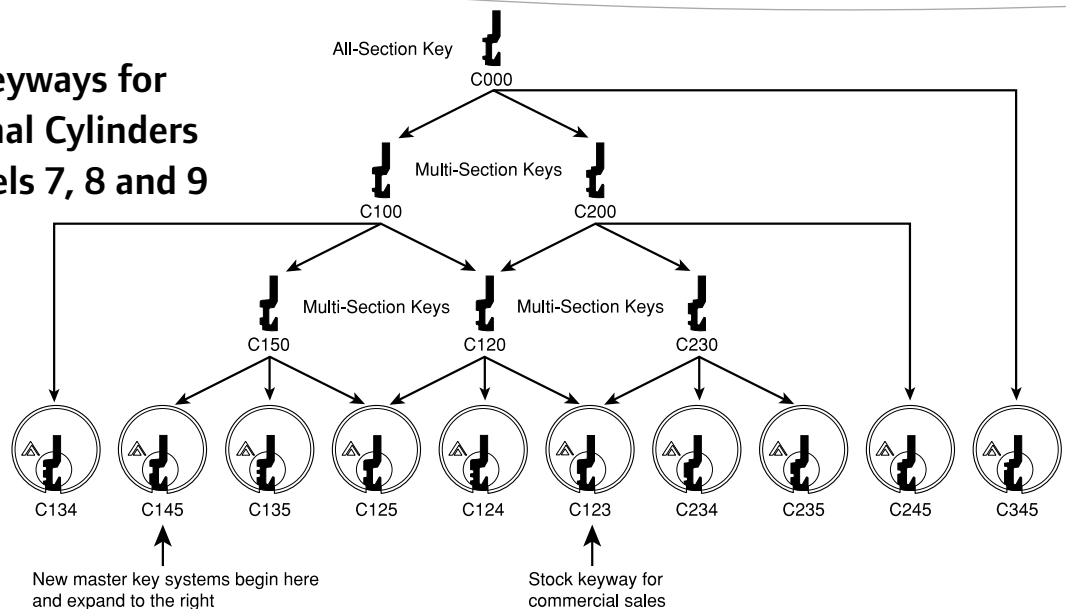
Everest products are available to Schlage commercial customers only. Dealers agree not to resell Everest product to residential/retail channels, such as home centers, mall key stands, etc.

Sample cylinders.

The keyway for sample cylinders is C123.



Everest C Family Keyways for Everest Conventional Cylinders and Primus XP Levels 7, 8 and 9



Everest B keyway – Restricted Security

Everest B keyways provide restricted security because distribution and duplication are limited. These recently redesigned cores deliver even higher performance and long life for the keys and cores thanks to a proprietary manufacturing process that drills the pin holes into the lock's individual components during the pre-assembly phase, rather than after the core has been assembled.

This innovative process increases the tolerance of the core to deliver excellent resistance to cylinder manipulation. In fact, lock pick ratio of attempts to success is 50 percent lower, based on this new design. The 7-pin core is also noticeably easier to operate, requiring 60 percent less force for insertion and rotation. The core's accurate design also helps to reduce the amount of time spent with core maintenance by minimizing key breakage and extending the life of the cylinder.

- Available to end users only – restricted distribution controlled by Schlage
- No geographical exclusivity
- End user facility code is stamped on all keys for tracking purposes
- Key blanks are available to end user only
- End user is not tied to originating dealer – can purchase from any Schlage authorized dealer
- Letter of authorization required for originating order and any subsequent order that requires change of shipping address or supplier

To set up a new dealer:

- Submit purchase order with attached signed LOA

Re-ordering customers need to:

- Provide LOA only if supplier name or shipping address is different from originating LOA
- Specify facility code and key section on order

Everest
Everest D
Everest C
Everest B
Classic
SFIC Open

End-user restricted.

These keyways and key sections are all named with a “B” followed by three digits, such as B125. “B” stands for Best®-style.

All Everest B family keys are restricted. Most keyways are for large end users with in-house locksmiths to cut keys and combine cores. Everest B family keyway cores are 7-pin and cannot be interkeyed with any full-size cylinders.

Key control.

All B family keys are protected against unauthorized manufacture and distribution by U.S. utility patents 5,015,717 and 5,809,816 until July 2014.

Keyway assignment.

The Schlage Master Key Department assigns one of the available keyways at random for each job. Each job is assigned a facility code which is stamped on all key blanks and cut keys. End users are not permitted to cut keys with any facility code other than their own. There is no guarantee of geographic exclusivity. End users who require this are encouraged to upgrade to full size Primus XP cylinders.

Establishing a new key system.

A letter of authorization on the end user’s official stationery is required with the initial order to establish the authorized ship-to location.

Ordering keys or cores for existing systems.

Restricted keyway locks, cores and blanks on each subsequent order will be drop shipped to the location originally specified by the end user. Any order that must be shipped to a different destination or change of supplier requires a letter of authorization on the end user’s official stationery.

Key machines.

B family keys can be cut on a special version of the Blue Punch available through Schlage as 40-071. It is not possible to retrofit any existing Best or Blue Punches to cut B family keys. You can also use a rotary cutter key machine to duplicate these keys or cut them by code. The stop is at the shoulder of the key, even though the bittings are read and written tip to bow. This merely requires using new spacing specifications on existing rotary cutter code machines.

Pin kits.

All Schlage small format cores are compatible with most brands of A2 system kits. However, Schlage does not recommend using Arrow™ or Kaba Peaks bottom pins in Everest cores. If you do not already have an A2 pin kit, you can purchase Schlage SFIC pin kit 40-129.

Other service equipment.

If you already service Best style cores, no new service equipment is usually required for Everest other than the key machine. If you have no SFIC service equipment now, Schlage’s 40-129 pin kit contains all the standard tools, such as the capping block, key gauge, etc.

Schlage small format cores are compatible with virtually all brands of capping blocks, capping presses, capping pins, ejector pins, A2 key gauges and other specialized service equipment designed for Best style cores. The only exceptions are items designed specifically for Kaba Peaks 140 spacing and for Falcon cores using a single spring cover.

Keying options.

Cores must be ordered master keyed or uncombined. There is no such thing as 0-bitted small format cores.

Sales sample cores.

Sales sample cores have the B125 keyway. No key blanks or uncombined cores are available for samples since this is a restricted keyway. Each sample core comes with one operating key and one control key. Please specify sales samples when ordering.

B family dealer restricted.

Sole source keyway B235.

- Available to indirect locksmith dealers through wholesale channels with distribution controlled by Schlage
- End user must purchase from originating dealer – sole-source relationship
- Indirect locksmith ID code is stamped on all keys for tracking purposes
- Key blanks are not available to end user

To set up a new Everest B235 dealer:

- Submit an order for \$2,500 list for inventory commitment. Reduced inventory commitment of \$500 (list) for existing Primus XP dealers.
- Signed Everest B235 agreement approved by SSC management

Re-ordering customers need to:

- Provide dealer ID on purchase order
- Keys will always be drop-shipped to indirect locksmith location

The B235 keyway is sold primarily through wholesalers to commercial locksmiths or similar security dealers. There is a \$2,500 (list price) buy-in of uncombined cores and key blanks unless an existing Primus dealer; then the inventory investment is \$500 list. Each locksmith is assigned an ID number by Schlage, which is stamped on all key blanks. Locksmiths/dealers are not permitted to cut keys for any system set up by another dealer as indicated by the ID number on such keys.

Blanks are drop-shipped by Schlage directly to the locksmith, but cores can be stocked by the participating wholesaler. The locksmith must sign Schlage's key control contract agreeing to maintain the security of key blanks. The wholesaler provides the contract to the locksmith.

All B235 keys must be cut by the dealer/locksmith. No blanks can be sold to end users or institutional locksmiths. End users who require in-house key cutting need the end user restricted keyways described earlier.

B235 is also available to Schlage Authorized Security Centers. Schlage contract hardware distributors can only purchase the B235 keyway if they already provide complete key cutting and master keying service for their end users, and they actively promote and sell SFIC restricted key systems.

Separate key control contracts are used for these two types of dealers, but they contain the same key control policies as the contracts signed by commercial locksmiths. The Ingersoll Rand local sales office provides these contracts.

Keying options.

Since most of the key systems and combining will be done by the commercial locksmith, most of these cores will be furnished uncombined. Factory master keying is also available. There is no such thing as 0-bitted for small format cores.

Security center keyway B234.

- Available to Security Centers only – distribution controlled by Schlage
- End user must purchase from originating dealer – sole-source relationship
- No geographical exclusivity
- Dealer ID code is stamped on all keys for tracking purposes
- Key blanks are not available to end users

To set up a new Everest B234 dealer:

- \$1,000 (list) inventory commitment order
- Signed Everest B234 agreement approved by SSC manager

Re-ordering customers need to:

- Provide dealer ID with order
- Keys will always be drop-shipped to dealer location

The B234 keyway is sold exclusively through Schlage Authorized Security Centers. Each Service Center is assigned an ID number by Schlage, which is stamped on all key blanks. This keyway is primarily for national accounts. Security centers are not permitted to cut each other's keys, subject to conditions set forth in the B234 key control contract.

Blanks are drop-shipped by Schlage directly to the Security Center, but uncombined cores may be stocked by the participating wholesaler for fast local delivery. The Security Center must sign Schlage's key control contract agreeing to maintain the security of key blanks.

All B234 keys must be cut by the Security Center. No blanks can be sold to end users or institutional locksmiths. Those types of customers need the end user restricted keyways described earlier.

Keying options.

Since most of the key systems and combining will be done by the Service Center, most of these cores will be furnished uncombined. Factory master keying is also available. There is no such thing as 0-bitted for small format cores.

The Classic keyway family.

Schlage Classic keyways provide security with no restrictions on duplication. Our Classic keyways can be easily upgraded or mixed with Primus XP for enhanced protection.

Primus XP – high security.

The Primus XP keyway provides various levels of geographic exclusivity and requires authorization for duplication, ensuring better key control.

- Patented protection until July 2024
- Cylinders have a second set of pins for added security and pick resistance
- UL 437 versions available for additional protection against drilling and physical attacks
- Operates Primus XP and Classic (open) cylinders

Highlights of Primus XP Level 1

- No exclusivity for sidebit milling – shared by all dealers and distributors
- Dealer can purchase products from any Schlage Primus XP authorized dealer
- End user can purchase from any Primus Level 1 authorized dealer - no sole-source relationship

To set up a new dealer:

- Submit a Classic Primus XP Level 1 signed agreement to the distributor

Everest
Everest D
Everest C
Everest B
Classic
SFIC Open

			Typical Applications
End-User Exclusive <ul style="list-style-type: none"> • Exclusivity assigned randomly based on the time zone or nationwide • Degree of exclusivity depends on user commitment 	LEVEL 4	End User Exclusive	<ul style="list-style-type: none"> • Educational Facilities • Healthcare Facilities • Large Office Complexes • Government Buildings • Detention Centers • Franchises
End-User Exclusive <ul style="list-style-type: none"> • Exclusivity is randomly assigned based on a national pool of available combinations or first two digits of the zip-code • Degree of exclusivity depends on user commitment 	LEVEL 3		
Dealer Exclusive <ul style="list-style-type: none"> • Dealers that sell directly to end users are eligible for side bit milling exclusivity - sole-source relationships between end user and originating dealer • Exclusivity is for the dealer's physical location time zone 	LEVEL 2		<ul style="list-style-type: none"> • Office Buildings • Banks • Private Schools • Healthcare Residences
Dealer Exclusive <ul style="list-style-type: none"> • Owned and stocked by dealers - sole-source relationships between end user and originating dealer • Resold to end users • Keys bear unique dealer ID based on first three digits of zip code exclusivity of side bit milling 	LEVEL 1+		<ul style="list-style-type: none"> • Small Businesses • Restaurants • Doctor's Offices
National Non-Exclusive <ul style="list-style-type: none"> • Stocked by distributors • Resold to end users via commercial locksmiths • All Level 1 locksmiths have the same side bit millings 	LEVEL 1		<ul style="list-style-type: none"> • Strip Mall Shops • Small Businesses • Upscale Homes

Highlights of Primus XP Level 1+ - Zip Code Exclusivity Based on First Three Digits

- Dealer-owned sidebit milling exclusivity based on the first three digits of zip code
- Dealer can purchase products from any Schlage Primus XP authorized dealer
- Available to direct and indirect dealers
- Key blanks are not available to end users
- End user must purchase from originating dealer sole-source relationship

To set up a new dealer:

- Submit Classic Primus XP Level 1+ (and Level 7) signed agreement
- Have Ingersoll Rand local sales management sign and approve the agreement
- For dealers who are new to Primus, submit purchase order of a total of \$7500 (list) to cover both Classic and Everest Primus inventories
- For those who are existing Primus dealers, submit purchase order of a total of \$5000 (list) to cover both Classic and Everest Primus inventories

Re-ordering customers need to:

- Provide dealer ID and Primus sequence number with order
- Primus keys will always be drop-shipped to dealer location

Highlights of Primus XP Level 2 - Time Zone Exclusivity

- Dealer-owned sidebit milling exclusivity based on time zone
- Dealer can purchase products from any Schlage Primus XP authorized dealer
- Available for direct and indirect dealers
- Key blanks are not available to end users
- End user must purchase from originating dealer – sole-source relationship

To set up a new dealer:

- Submit Classic Primus XP Level 2 (and Level 8) signed agreement
- Have Ingersoll Rand local sales management sign and approve the agreement
- For dealers who are new to Primus XP, submit purchase order of a total of \$25,000 (list) to cover both Classic and Everest Primus XP inventories
- For existing Primus dealers, submit purchase order of a total of \$15,000 (list) to cover both Classic and Everest Primus inventories

Re-ordering customers need to:

- Provide dealer ID and Primus sequence number with order
- Primus keys will always be drop-shipped to dealer location

Highlights of Primus XP Levels 3, 4 - End User Exclusive

This level is for end users who may want to cut their own keys and/or must be able to obtain competitive bids on subsequent additions to their Classic Primus XP key system.

- Sidebit milling is assigned to end user, not dealer, based upon commitment level
- End user is not tied to originating dealer, but can purchase from any Schlage Primus authorized dealer
- Key blanks are available for end user only
- Face sheet is required for each subsequent order

To set up a new dealer:

- Submit signed signature sheet
- Submit signed face sheet
- Submit an order with the above two items

Re-ordering customers need to:

- Submit signed face sheet with order
- Specify keyway on order form

Level 3U (Universal) – Fewer than 60 cylinders

Schlage randomly assigns a side bitting from a small pool of combinations which may be repeated locally. There are no guarantees of geographical exclusivity.

Level 3G (Geographical) – More than 60 cylinders

Schlage assigns an exclusive side bitting based on the first two digits of the end user's zip code

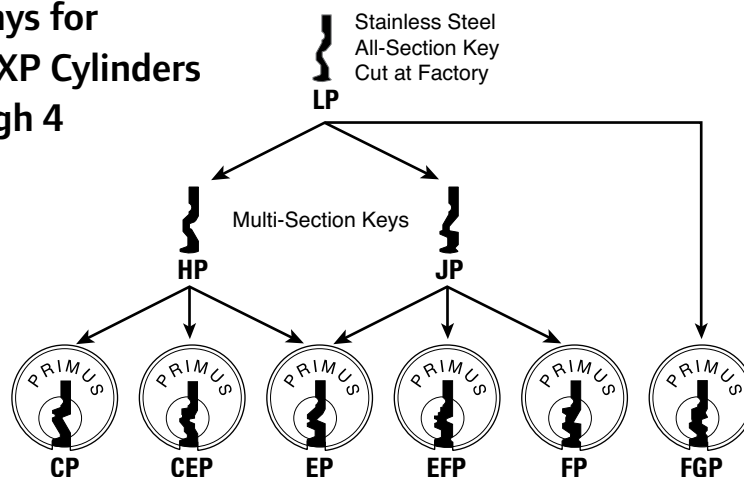
Level 4Z (Time Zone) – Minimum of 2,000 cylinders

Inventory of 2,000 cylinders must be maintained over two years or pay a fee. End user buys exclusivity of one side bitting within his time zone and country.

Level 4N (Nationwide) – Minimum of 4,000 cylinders

Inventory of 4,000 cylinders must be maintained over two years or pay a fee. End user buys nationwide exclusivity of one side bitting.

Obverse Keyways for Classic Primus XP Cylinders Levels 1 Through 4

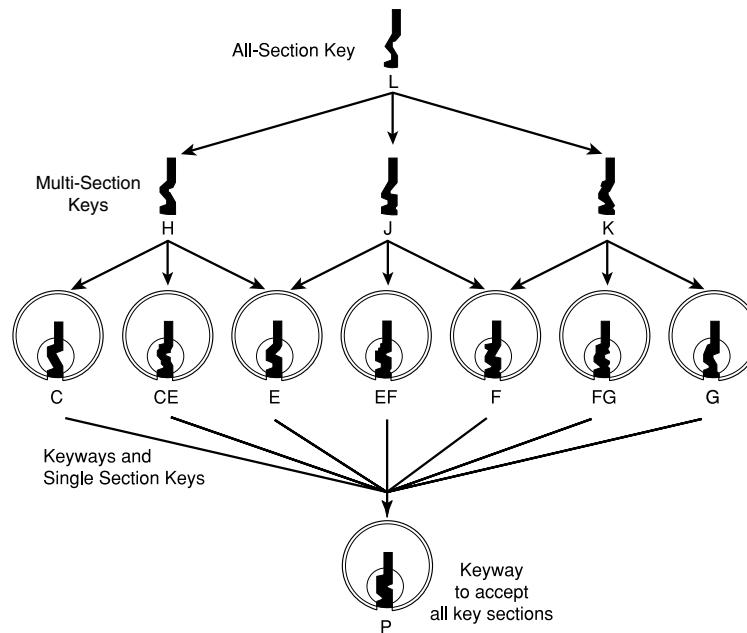


Classic keyway – basic security.

Classic keyways are most often found in older key systems that were installed before the introduction of the Everest keyways. Because Classic keys can be duplicated at any retail or home center outlet they are best suited for residential applications and those users who need only minimal key control.

- Compatible for upgrade to Primus XP for better security and key control
- Not patent protected
- Can be duplicated without authorization
- Retrofit cylinders available to fit many competitors' locks
- Cylinders cannot be interkeyed into SFIC key systems
- Operates Classic (open) cylinders only

Obverse Keyways for Classic Conventional Cylinders



Small Format Interchangeable Core

Best®-style open key system.

Schlage interchangeable cores let you optimize security and maximize your budget resources by giving you the flexibility to use non-restricted keyways in many existing lock products.

Schlage offers 6- and 7-pin cores in Best's most popular keyways to key into existing systems where patented key control is not needed.



Key sections available: A, D, E, F, G, H, J, K, L, M

Everest
Everest D
Everest C
Everest B
Classic
SFIC Open



Ingersoll Rand's Security Technologies Sector is a leading global provider of products and services that make environments safe, secure and productive. The sector's market-leading products include electronic and biometric access-control systems; time-and-attendance and personnel scheduling systems; mechanical locks; portable security; door closers, exit devices, architectural hardware, and steel doors and frames; and other technologies and services for global security markets.

800-847-1864

www.schlage.com www.ingersollrand.com