

THAT'S THE BEAUTY OF

Burke

F L O O R I N G



PEOPLE

Throughout our 57-year history, we have continually recognized that our people are our greatest strength! When you choose Burke, you have chosen professional, knowledgeable and friendly people. From sales representatives to customer service personnel to manufacturing and distribution staff, our goal is to build and maintain lasting relationships that make specifying flooring systems easy and straightforward.

PRODUCTS

From floor tile to stair systems to wall base to mouldings to adhesives, Burke is your single source supplier for all of your resilient flooring needs. Whatever the application, we have solutions that are as durable, resilient, and as eco-friendly as they are beautiful. Our 20-color Uni-Color System assures color coordination across the entire line of Burke Flooring products.

And, if it's a custom color or product you're looking for, we'll work with you to provide the unique solution and enhance your reputation. Beyond our standard offering, our team is both excited and challenged to provide unique solutions to demands of the progressive commercial interiors.

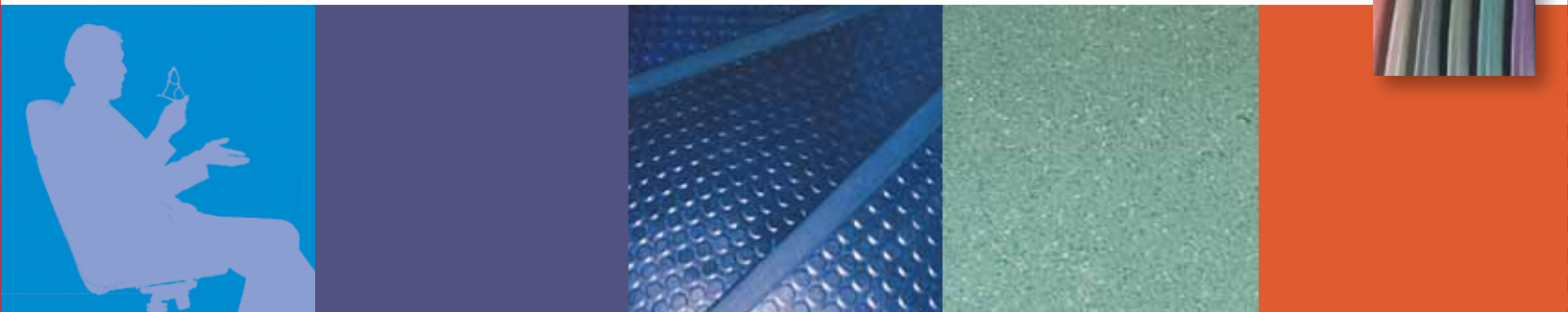


TABLE OF CONTENTS

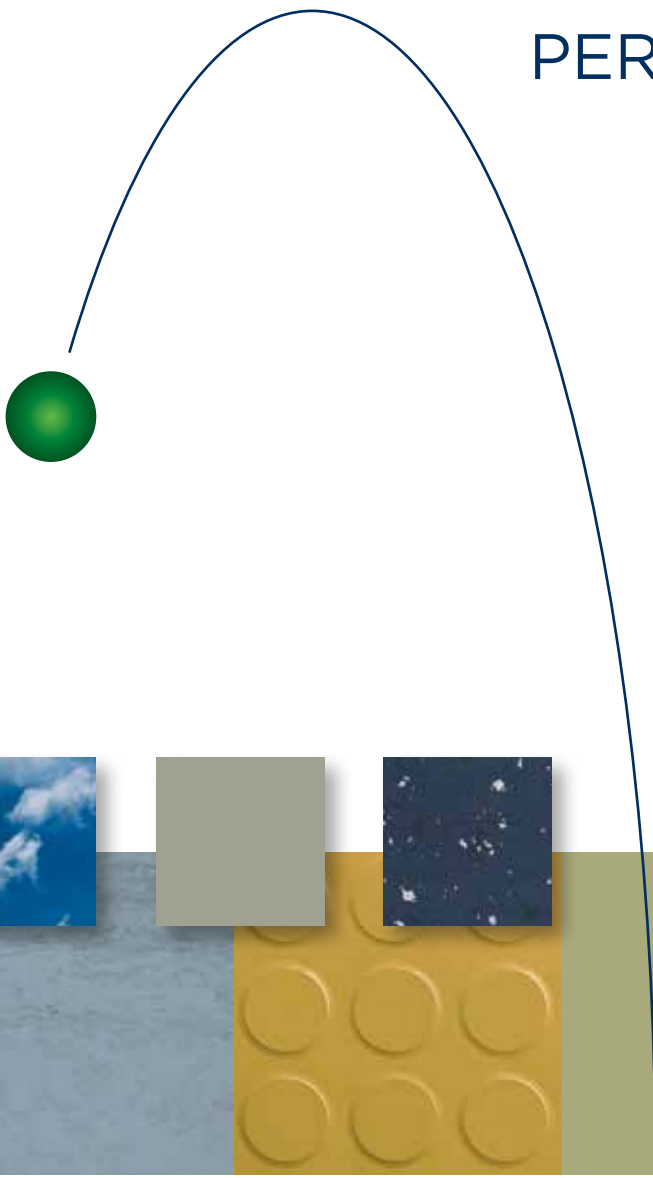
FLOORING

- 10** Rubber
 - Endura Solids
 - Endura Flecksibles
 - Endura Simply Smooth
 - Burke MarbHD
 - Burke Marble
- 26** Athletic & MultiPurpose Rubber
 - Endura SRT
- 28** EcoFitness Flecksibles
 - EcoFitness Naturals
 - BurkeTurf
- 30** Luxury Vinyl
- 35** SpectraJet Custom Cut Art & Patterns

STAIR SYSTEMS

- 36** Rubber
- 38** Rouleau
- 40** Linear Series
 - Treads
- 41** Nosings

PERFORMANCE



So what's with the bouncing ball? It shows, in a very understandable way, that the performance of rubber compounds can be dramatically different. Many people feel that all rubber flooring looks alike; therefore, it must all perform alike. Our unique formulation is behind the superior performance of our products. See the full demonstration at burkeflooring.com. The presentation pits a well-formulated rubber compound against one that is not. Once you see for yourself, we're sure you'll agree that it's no contest. From stadiums to airports to schools to universities to healthcare facilities - even automotive service bays, Burke Flooring has been put to the test and has built a reputation for performance.

WALL BASE

- 42** Profiles Designer Series
- 46** Commercial & Corner Ready
- 48** Rubber
 - BurkeBase
 - RubberMyte
- 49** Vinyl
 - Mercer Vinyl

MOULDINGS

- 50** Subfloor Leveling
- 51** Mercer Vinyl
 - Joining
 - Cove Supports
- 52** Transitional
 - Mat Edge
- 53** Edge Finishing
 - Corner Guards
 - Thresholds
 - Tub Mouldings
 - Miscellaneous

ACCESSORIES

- 54** Adhesives
 - BR-101
 - BR-710
 - BR-711
 - BR-715
 - BR-721
 - BR-725
 - Step-Bond Tape
 - Additional Products
 - Endura UV
 - Endura FR


ON THE WEB

- 55** Visit our website for more information and to keep up with what's new at Burke!

KEEP THE **UNI-COLOR CHART** ON THE INSIDE FLAP OPEN AS YOU USE THIS CATALOG.

Our **20 Uni-Color System** ensures a match from floor tile to wall base to stair treads to risers to nosing and skirting and mouldings.

Please make your final selection for all colors from actual product samples.



RESILIENCE:

That's what defines our people, products and

re•sil•ience [ri-zil-yuh ns, -zil-ee-uh ns]-noun

1: The power or ability to return to the original form, position, etc., after being bent, compressed, or stretched; elasticity

2: The ability to recover from or adjust easily to change

We believe this best describes the heart of our company. Our products provide comfort underfoot and outstanding life cycle performance due to our unique chemistry. In continuous business for more than 50 years, our people are like our products... resilient!

But don't just take our word for it. Our reputation for resilience is confirmed by the customers we serve.

“College students can be hard on our dormitories and our flooring takes the brunt of it. The Burke stair treads and flooring have proven to be one of our most permanent solutions.”

- Environmental Services
Department Head



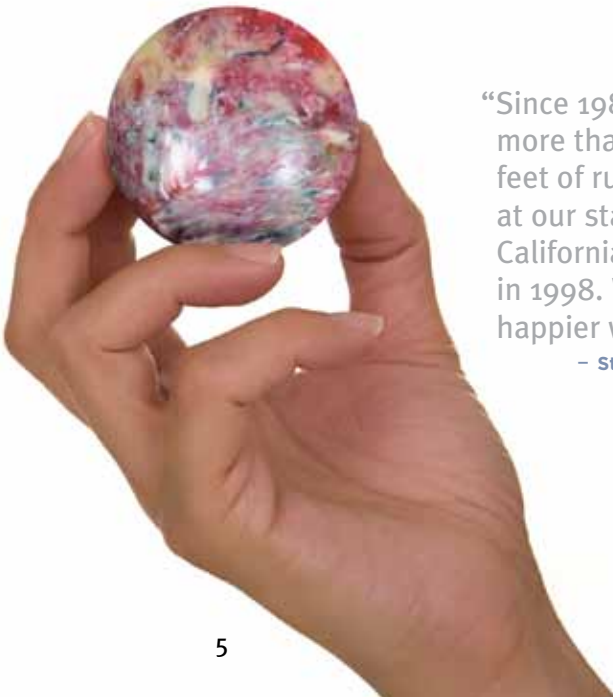
performance.

“The responsiveness and adaptability of our Burke representatives remains a key factor in our use of their flooring products on our most critical jobs.”

- Interior Designer

“Burke has shown that they understand our needs and those of our clients. They continue to provide us with some of the most flexible, durable and innovative flooring products.”

- Project Architect



“Since 1982, we have had more than 100,000 square feet of rubber tile in service at our stadium in Southern California. We added more in 1998. We could not be happier with it.”

- Stadium Facilities Manager

We go easy on **THE ENVIRONMENT**. Burke is committed to providing quality

LEED POINT CATEGORY For Versions NC, CI & Schools & Retail	PERCENTAGE POST-CONSUMER WASTE "BURKE FLOORING"			PROJECTS WITHIN 500 MILES OF SAN JOSE, CA, WHICH UTILIZE THESE PRODUCTS, MAY QUALIFY FOR LEED POINTS.			
	EcoFitness Flecksible Rubber Sports	EcoFitness Naturals Rubber Sports	Burke Luxury Vinyl Tile	BurkeBase Type TS Rubber Wall Base	Rouleau Rubber Tile & Tread	Marbled & MarbHD Rubber Tile & Treads	Endura Rubber Tile & Treads
MR Credit 4 Recycled Content Burke Resilient Flooring contains up to 88% post consumer content helping earn MR Credit 4. Refer to chart for specific recycled content of Hard Surface Flooring options.	Yes. 73% Post-consumer Content	Yes. 88% Post-consumer Content	Yes. 67% Post-consumer Content				
MR Credit 5 Regional Materials Products that have been extracted, harvested or recovered, as well as manufactured, within 500 miles of the project site. All Burke Thermoset Rubber products are manufactured in San Jose, CA. All Burke Thermoplastic Rubber products are manufactured in Eustis, FL.				Yes. 60% of Raw Materials Extracted Within 500 Mi of Plant	Yes. 30% of Raw Materials Extracted Within 500 Mi of Plant	Yes. 30% of Raw Materials Extracted Within 500 Mi of Plant	Yes 12% of Raw Materials Extracted Within 500 Mi of Plant
EQ 4.1 Low Emitting Materials Adhesives Burke Flooring Products use adhesives that meet the SCAQMD Rule #1168 for VOC limits. Using these adhesives will contribute to earning EQ Credit 4.1.							
EQ 4.3 Low Emitting Materials, Flooring Systems Burke Flooring Products are FloorScore Certified which is required for non-carpet flooring used in LEED projects to earn EQ Credit 4.3. Refer to chart for products that have a FloorScore Certificate.	Yes. FloorScore Certified	Yes. FloorScore Certified	Yes. FloorScore Certified	Yes. FloorScore Certified	Yes. FloorScore Certified	Yes. FloorScore Certified	Yes. FloorScore Certified



flooring products that consider the best use of natural resources and the long term impact on the environment.

To that end, we have established the following corporate directive: All new flooring products introduced to the market will include the use of sustainable and/or recycled materials. Concurrent with this initiative, we will work to reengineer our existing products to meet these same criteria. This commitment to the environment both challenges and excites our team. Throughout our literature you'll find a symbol to identify products that contain Recycled Content that can contribute to LEED qualification points.

For a more comprehensive overview of our green products go to www.burkeflooring.com/green

PROJECTS WITHIN 500 MILES OF EUSTIS, FL, WHICH UTILIZE THESE PRODUCTS, MAY QUALIFY FOR LEED POINTS.

Burke Flooring Adhesives	Rubbermyte Type TP Wall Base	Mercer Vinyl Type TV Wall Base	Profiles Designer Wall Base	Mercer Vinyl Mouldings	Linear Series Treads & Rubber Stair Nosings
	Yes 60% of Raw Materials Extracted Within 500 Mi of Plant	Yes 60% of Raw Materials Extracted Within 500 Mi of Plant	Yes 60% of Raw Materials Extracted Within 500 Mi of Plant	Yes 23% of Raw Materials Extracted Within 500 Mi of Plant	Yes 23% of Raw Materials Extracted Within 500 Mi of Plant
Yes. All Burke Flooring Adhesives Meet SCAQMD Rule 1168					
	Yes. FloorScore Certified	Yes. FloorScore Certified	Yes. FloorScore Certified	Yes. FloorScore Certified	Yes. FloorScore Certified

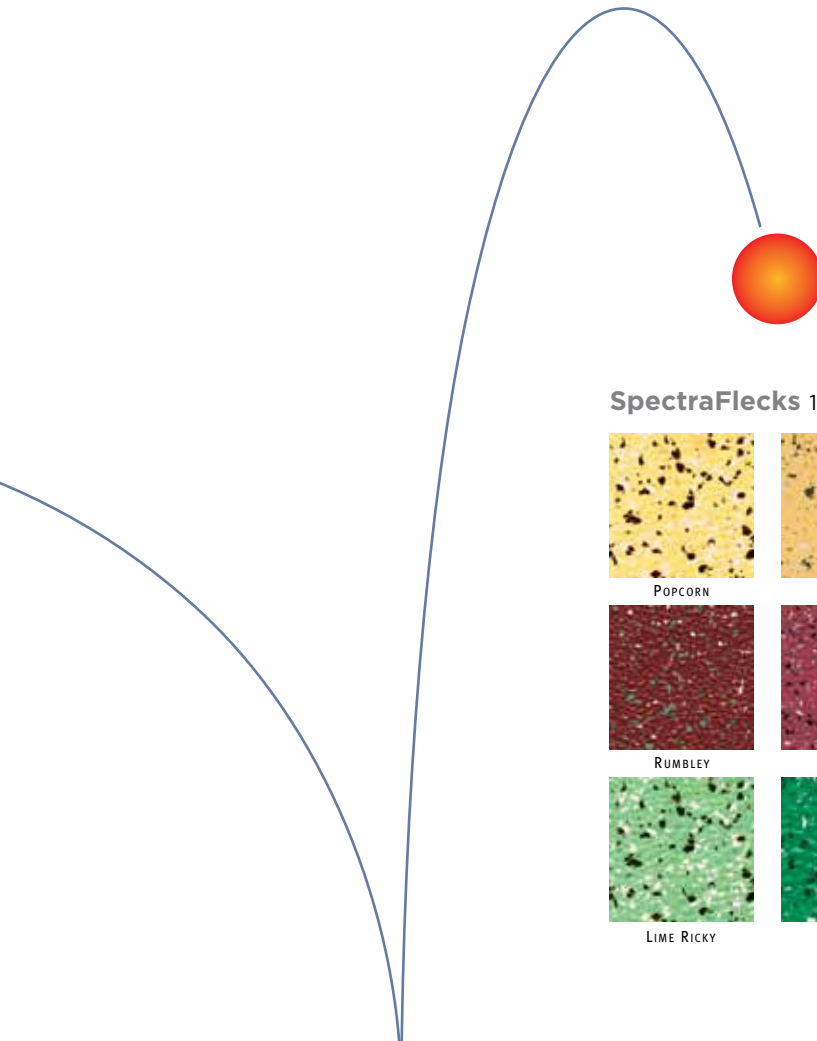
FROM OUR FACTORY TO YOUR FLOOR

For Burke, GREEN is more than LEED. Certainly, we strive to manufacture flooring products that can contribute to LEED points. But, more than that, we strive for GREEN in all aspects of our business. Burke strives to meet or exceed best environmental practices in our business, our manufacturing processes and our products.



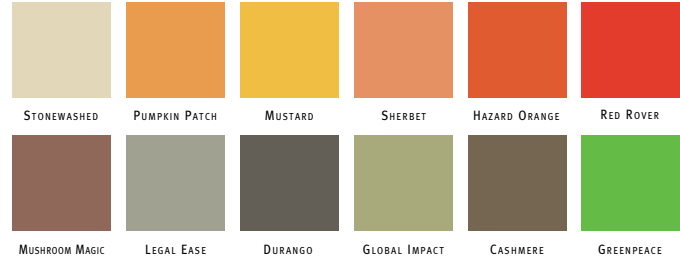
*MR Credit 5 LEED CI only relates to where product is manufactured (excludes the "extracted, harvested, recovered" caveat).

Set your **IMAGINATION** free. Our **20 Uni-Color System**
 Or get the maximum impact

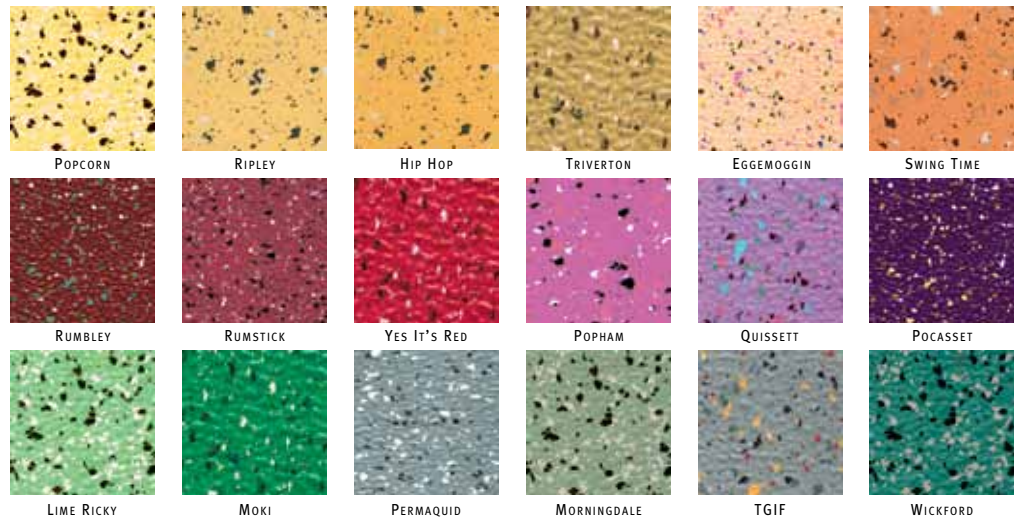


SpectraSolids 1,000 Sq. Ft. Minimum

Please make



SpectraFlecks 1,500 Sq. Ft. Minimum



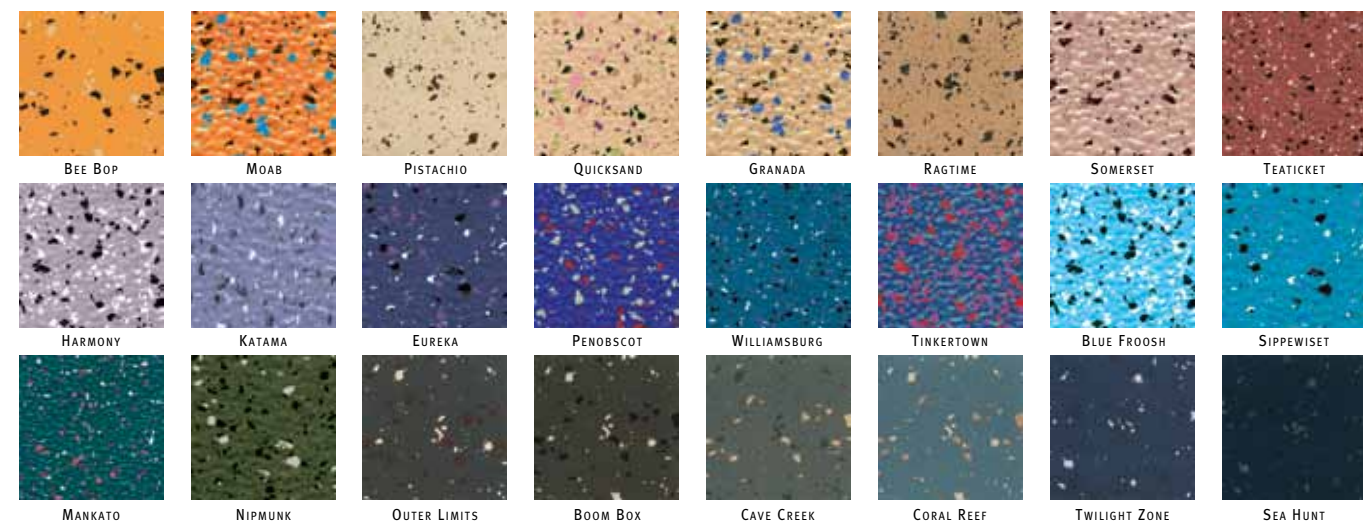
Our line of standard **wall base**



ensures a match from floor tile to wall base to stair treads to risers to nosing and skirting and mouldings.

when you order a minimum of 1,000 square feet of our **SpectraSolids**, or a **minimum of 1,500 square feet** of **SpectraFlecks** or... **customize your color** to match your vision for your floor.

your final selection for all colors from actual product samples. To order samples go to www.burkeflooring.com or call **800.447.8442 ext. 1031**.



comes in 81 colors. No minimums required.



* Not available in BurkeBase Rubber Type TS





FLOORING

It's **HIP TO BE SQUARE** or round or sculptured or solid or smooth or flecked or...





ENDURA®

Endura provides impressive durability and comfort in a variety of colors and surface textures. Its unique rubber formulation is highly slip-resistant and helps reduce noise from footfall while increasing comfort. Endura's built-in waxes produce a natural luster that requires no waxing or stripping and lowers maintenance costs.

Available in all **Uni-Colors**
 Custom colors available.
 Minimums apply. Please make final selection for all colors from actual product samples. To order samples go to **www.burkeflooring.com** or call **800.447.8442 ext. 1031**.

SOLID COLOR RUBBER TILE

Backed by a ten year warranty, Endura offers one of the best life-cycle flooring values available and is being used worldwide in thousands of commercial, institutional and industrial facilities.

ENDURA® SOLID COLOR RUBBER TILE TECHNICAL DATA

All rubber flooring products manufactured by Burke meet guidelines established by ADA for walking surfaces and for ramps.

STANDARD TILE PROFILES

Relief Shape	Thickness	Size	Profile
Round	.125"	18.125" x 18.125"	.025" Raised
Square	.125"	18.125" x 18.125"	.025" Raised
Sculptured	.125"	18.125" x 18.125"	Sculptured

SPECIAL ORDER TILE PROFILES 1,000 sq. ft. minimum

Round	.125"	36.125" x 36.125"	.025" Raised
High Round	.180"	36.125" x 36.125"	.050" Raised
Square	.125"	36.25" x 36.25"	.025" Raised
High Square	.180"	36.125" x 36.125"	.050" Raised
Sculptured	.125"	36" x 36"	Sculptured

Back is smooth-sanded
 Applicable Standards
 Indentation Resistance
 Flame Resistance

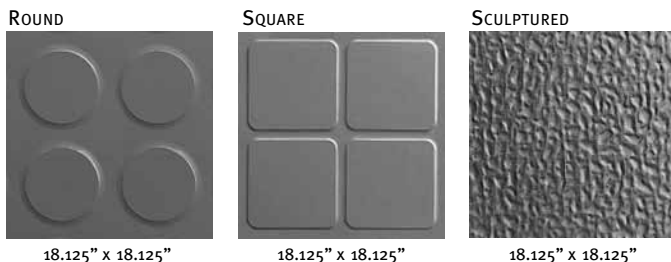
ASTM F-1344, Class 1A
 ASTM F-970 - .000" residual indent at 250 PSI
 ASTM E-648, Class 1



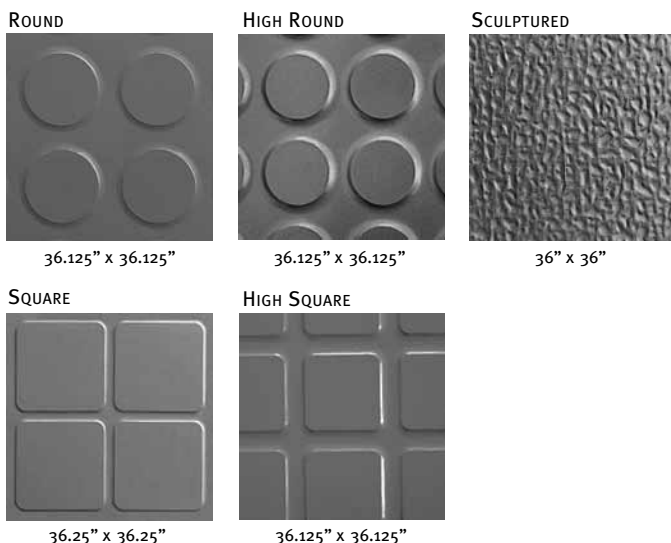
OGR™

Available in oil & grease formulation for use in service bays and other transportation applications.

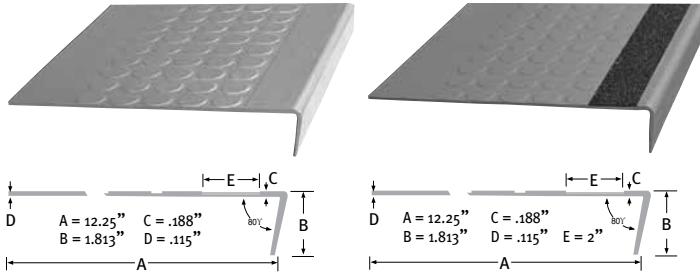
STANDARD PROFILES - SOLIDS



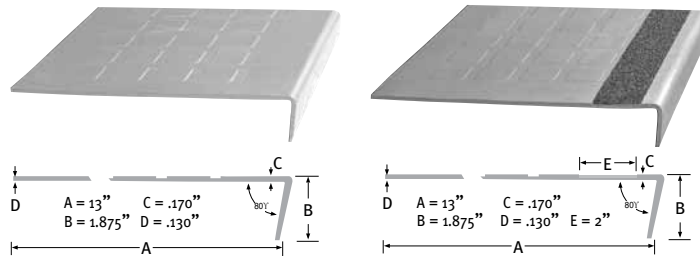
SPECIAL ORDER PROFILES - SOLIDS 1,000 SQ. FT. MINIMUM



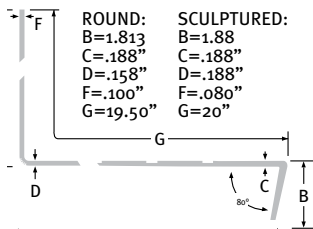
ROUND PROFILE - SQUARE NOSE & VISUALLY IMPAIRED



SQUARE PROFILE - SQUARE NOSE & VISUALLY IMPAIRED



UNI-STEP™ ROUND PROFILE - SQUARE NOSE & VISUALLY IMPAIRED



The Uni-Step™ tread/riser combination provides a unique one-piece solution for fast and clean stair tread installations. The seamless flow from tread to riser also gives you an easy to clean surface.

Available in Round and Sculptured Profiles



ENDURA® SOLID COLOR STAIR TREAD TECHNICAL DATA

All of our flooring products conform with ADA Accessibility Guideline Requirements that floors be stable, firm, and slip-resistant.

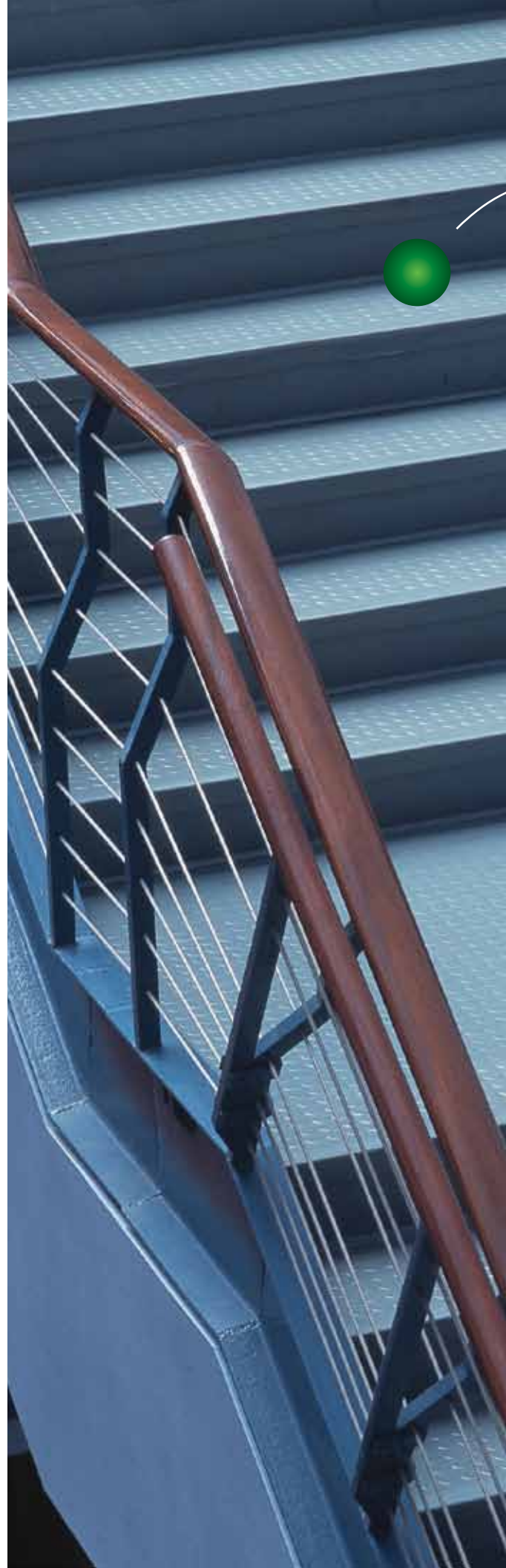
Treads: Product	Lengths	VI Strips	Relief
1/8" Round Profile	3', 4', 5', 6'	option	Round
1/8" Square Profile	3', 4', 5', 6'	option	Square
1/8" Uni-Step™	3', 4', 5', 6'	option	Round & Sculptured
1/8" Risers (7" height w/toe)	3', 4', 5', 6'	n/a	none
1/8" Risers (6" Cove)	4'	n/a	none
1/8" Skirting (10" toeless base)	4'	n/a	none



Applicable Standards: Treads: ASTM F2169, Type TS, Class 2, Group 1 & 2
Risers & Skirting: ASTM F1861, Type TS, Group 1, Style A & B
Indentation Resistance: ASTM F970 - .000" residual indent at 250 PSI
Flame Resistance: ASTM E-648, Class 1

Visually Impaired Safety Treads meet California Disabled Access Regulation, Title 24, Section 3306 for the visually impaired when used with contrasting strip color.

Tape may be ordered separately for onsite installations.



ENDURA[®] SOLID COLOR STAIR TREADS

Available in all **Uni-Colors**

Custom colors available.
Minimums apply. Please make final
selection for all colors from actual
product samples. To order samples
go to **www.burkeflooring.com**
or call **800.447.8442 ext. 1031.**

KEEP ▲ THE UNI-COLOR CHART ON INSIDE FLAP OPEN AS YOU USE THIS CATALOG



ENDURA FLECKSIBLES®

ENDURA FLECKSIBLES are designed to coordinate with the Burke **Uni-Color System**

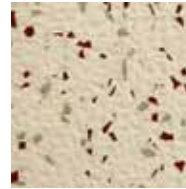
Please make final selection for all colors from actual product samples.
To order samples go to www.burkeflooring.com or call **800.447.8442 ext. 1031**.

Endura's Flecksibles collection provides durability, comfort and slip-resistance while creating an impressive look. The Flecksibles collection is comprised of 15 standard multi-color patterns. Each Flecksibles color-way consists of a standard Uni-Color base color and Uni-Color chips to create a dynamic non-directional design. This makes it easy to use solid Uni-Color tile with multi-color Flecksibles to create your own unique borders, patterns and designs. Add stair treads and risers for a complete flooring system. Backed by a ten year warranty, Endura offers one of the best life-cycle flooring values available and is being used worldwide in thousands of commercial, institutional and industrial facilities.

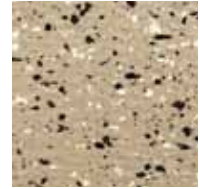
AVAILABLE
IN 15
DESIGNER
COLORS



011 Sahara Beige



028 Prairie Blush



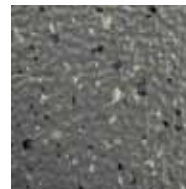
019 Barley Beige



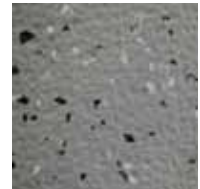
014 Granite Gray



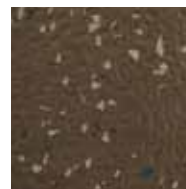
018 Clay Taupe



010 Shale Gray



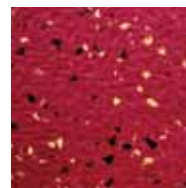
027 Agate Gray



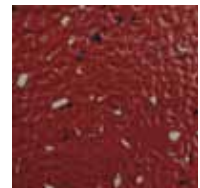
024 Henna Brown



025 Sockeye Salmon



026 Tuesday's Ruby



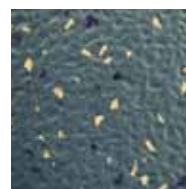
022 Dappled Burgundy



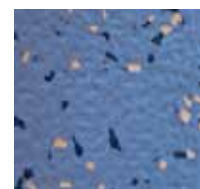
012 Starlight Blue



013 Spruce Blue

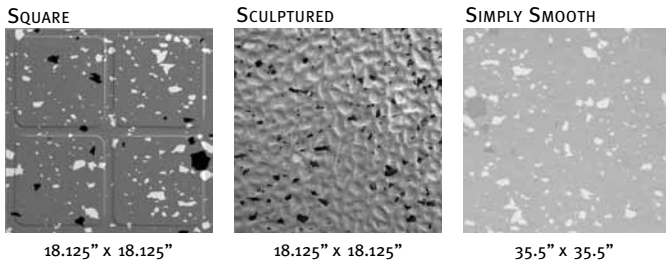


023 Ocean Dream

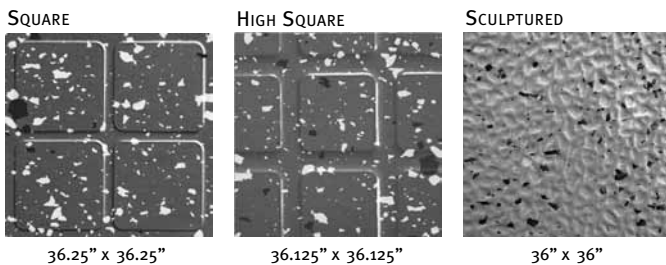


021 Balanced Blue

STANDARD PROFILES - FLECKSIBLES



SPECIAL ORDER PROFILES - FLECKSIBLES (1,500 SQ.FT. MINIMUM)



RUBBER TILE

FLECKIBLES RUBBER TILE TECHNICAL DATA

Tile:	Relief Shape	Thickness	Size	Profile
Standard Profiles				
	Square	.125"	18.125" x 18.125"	.025" Raised
	Sculptured	.125"	18.125" x 18.125"	Sculptured
	Simply Smooth	.100"	35.5" x 35.5"	Smooth
Special Order Tile Profiles 2,500 sq. ft. minimum				
	Square	.125"	36.25" x 36.25"	.025" Raised
	High Square	.180"	36.125" x 36.125"	.050" Raised
	Sculptured	.125"	36" x 36"	Sculptured

All rubber flooring products manufactured by Burke meet guidelines established by ADA for walking surfaces and for ramps.

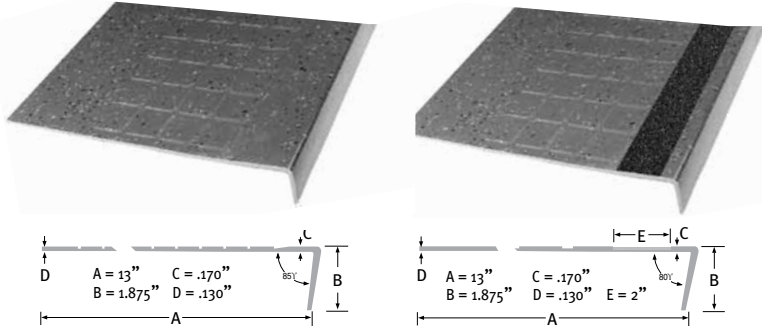
Back is smooth-sanded
 Applicable Standards ASTM F-1344, Class 1A
 Indentation Resistance ASTM F-970 - .000" residual indent at 250 PSI
 Flame Resistance ASTM E-648, Class 1



ENDURA FLECKSIBLES®

RUBBER STAIR

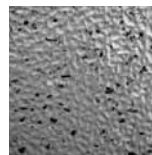
SQUARE PROFILE - SQUARE NOSE & VISUALLY IMPAIRED



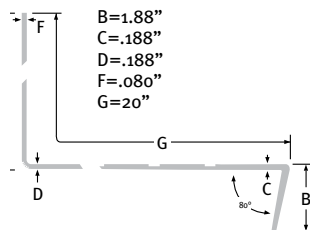
Flecksibles Treads are available in all 15 Flecksibles colors. Please make final selection for all colors from actual product samples. To order samples go to www.burkeflooring.com or call 800.447.8442 ext. 1031.

ENDURA UNI-STEP™ SINGLE PIECE STAIR TREAD AND RISER COMBINATION SQUARE NOSE & VISUALLY IMPAIRED

Endura's Uni-Step speeds installation, reduces maintenance and provides a uniform seamless and contoured look. Uni-Step automatically adjusts for step depths of between 9.5 inches and 13 inches. This also allows for adjustments to varying riser heights. Available in Endura's Sculptured Profile with optional VI strip inserts. Uni-Step is available in 15 standard Flecksibles colors.



Uni-Step available in Sculptured Profile only



FLECKSIBLES RUBBER STAIR TREADS TECHNICAL DATA

Product	Lengths	VI Strips	Relief
1/8" Square Profile	3', 4', 5', 6'	option	Square
1/8" Uni-Step™ Profile	3', 4', 5', 6'	option	Sculptured
1/8" Risers (7" height w/toe)	3', 4', 5', 6'	n/a	none
1/8" Risers (6" Cove)	4'	n/a	none
1/8" Skirting (10" toeless base)	4'	n/a	none

All of our flooring products conform with ADA Accessibility Guideline Requirements that floors be stable, firm, and slip-resistant.

Applicable Standards
Treads ASTM F2169, Type TS, Class 2, Group 1 & 2
Risers & Skirting ASTM F1861, Type TS, Group 1, Style A & B
Indentation Resistance ASTM F970 - .000" residual indent at 250 PSI
Flame Resistance ASTM E-648, Class 1

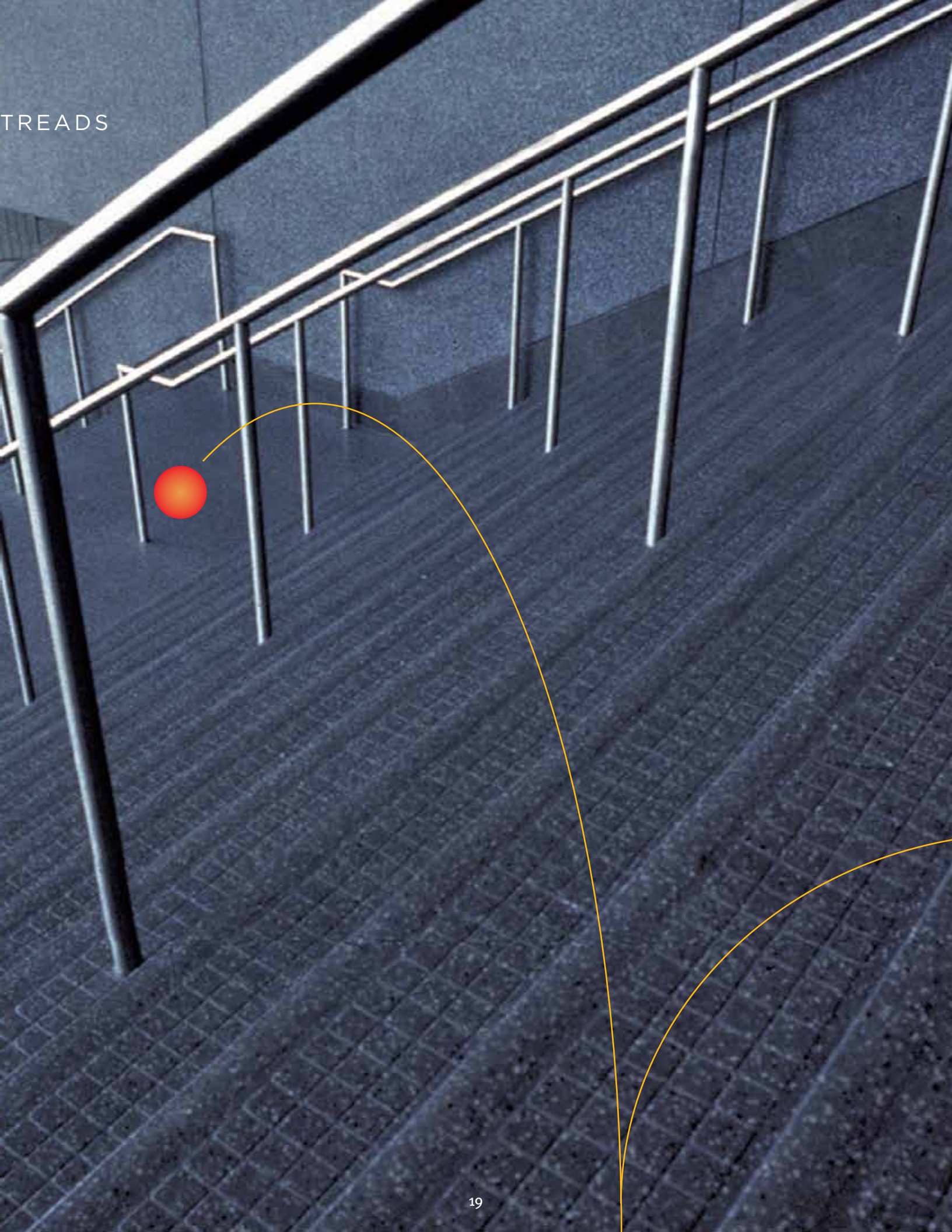
Visually Impaired Safety Treads meet California Disabled Access Regulation, Title 24, Section 3306 for the visually impaired when used with contrasting strip color.

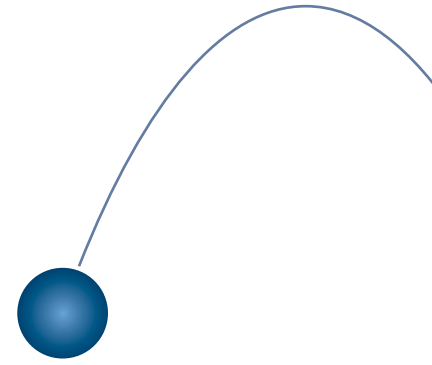


Tape may be ordered separately for onsite installations.



TREADS





ENDURA'S SIMPLY SMOOTH RUBBER FLOORING OFFERS THE BENEFITS OF SMOOTH SHEET FLOORING WITHOUT THE DRAWBACKS

ENDURA SIMPLY SMOOTH FLECKSIBLES[®]

Simply Smooth is easy to handle on the job site, no heavy rolls to manage, no end roll damage. It's easy to install, especially in areas with many walls, partitions or other frequent obstructions, takes less time and space to acclimate to the interior's temperature and humidity and it minimizes the appearance of seams because the tile expands slightly after installation.



Simply Smooth Technical Data

THICKNESS	SIZE
.100"	35.5" x 35.5"

All of our flooring products conform with ADA Accessibility Guideline Requirements that floors be stable, firm, and slip-resistant.

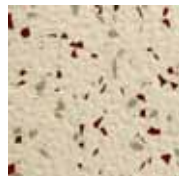
Applicable Standards	ASTM F-1344, Class 1A
Indentation Resistance	ASTM F970 - .000" residual indent at 250 PSI
Flame Resistance	ASTM E-648, Class 1

AVAILABLE IN 15 FLECKSIBLES COLORS, SMOOTH FINISH ONLY.

(NOT SCULPTURED AS SHOWN)



011 Sahara Beige



028 Prairie Blush



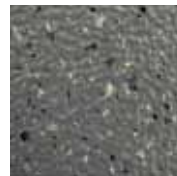
019 Barley Beige



014 Granite Gray



018 Clay Taupe



010 Shale Gray



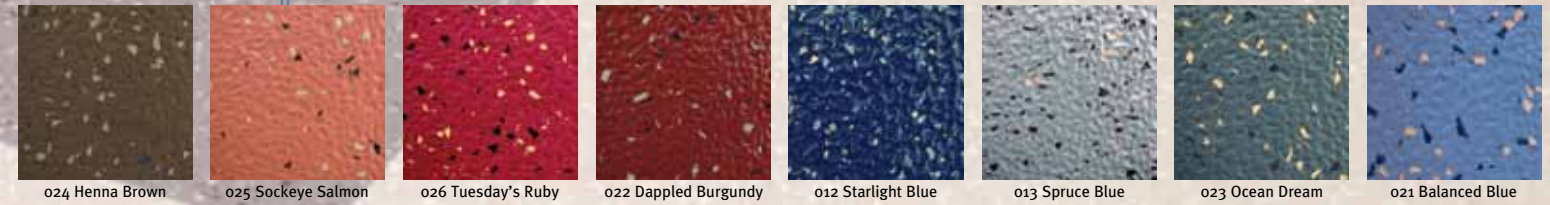
027 Agate Gray

Orders over 1,500 sq. ft. are available in all **SpectraFleck** colors.

Please make final selection for all colors from actual product samples.

To order samples go to www.burkeflooring.com or call **800.447.8442 ext. 1031**.

RUBBER FLOORING



024 Henna Brown

025 Sockeye Salmon

026 Tuesday's Ruby

022 Dappled Burgundy

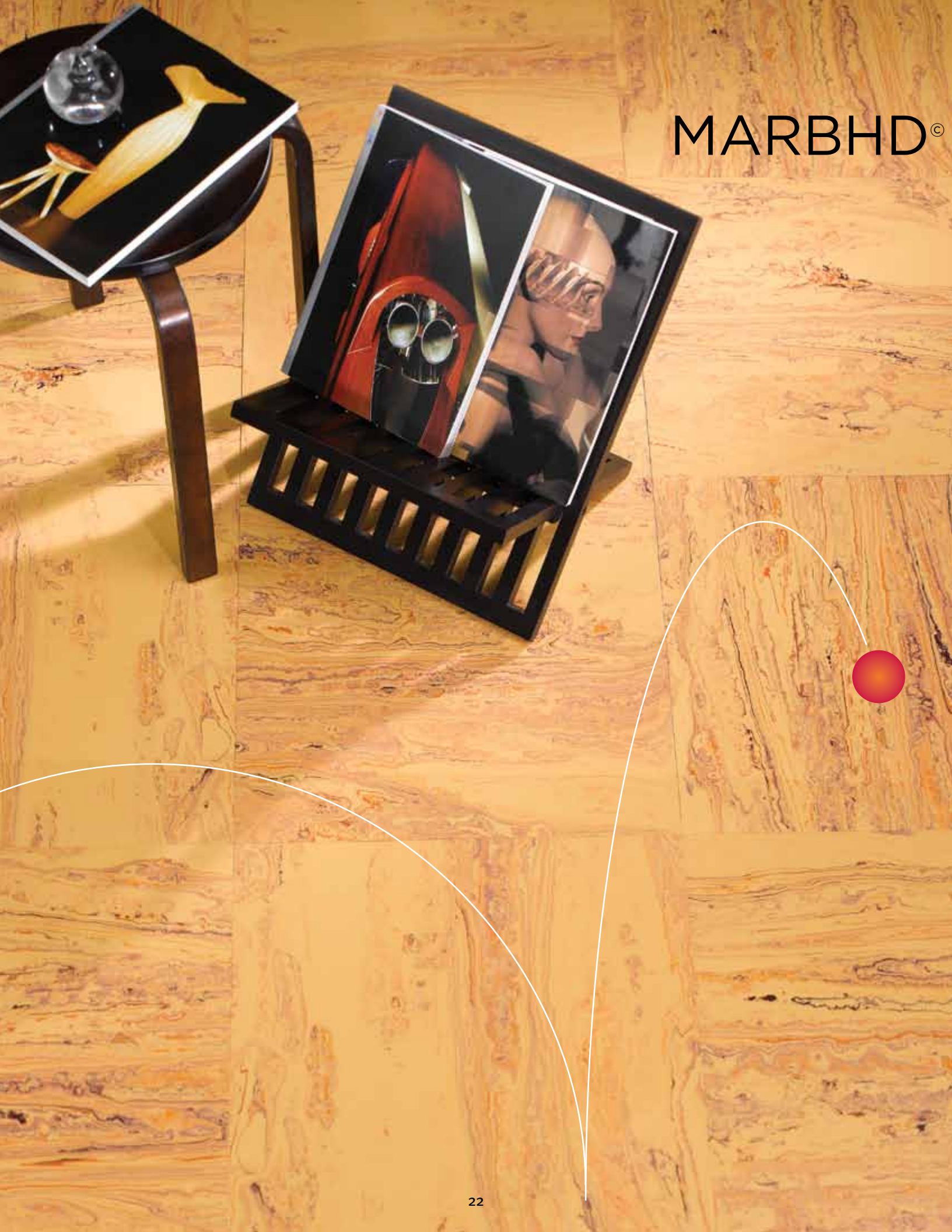
012 Starlight Blue

013 Spruce Blue

023 Ocean Dream

021 Balanced Blue

MARBHD[©]



Burke MarbHD features colors that coordinate with **Uni-Colors**

Please make final selection for all colors from actual product samples. Order samples at www.burkeflooring.com or call **800.447.8442 ext. 1031**.

HIGH DEFINITION RUBBER TILE

Burke's new MarbHD Rubber Floor Tile is a bold departure from the flooring industry's concept of standard marbled tile. Up to four bright and subdued colors are "marbled" together for a dramatic effect that is unique for every tile. Reminiscent of polished agate, MarbHD reflects nature's beauty in a high performance rubber flooring. The large 18 1/8" X 18 1/8" X 1/8" tile format maximizes each tile's unique veining and color. Each color used is included in other parts of Burke Flooring's Uni-Color color palette, making coordinating wall base and other finishing components a breeze.

Lay tiles in the same direction or quarter turn them for different design effects. Use as a whole floor, as a border or combined with any other 1/8" Burke rubber flooring. And maintenance is a snap. No topical coatings or wax treatments are required. Just use a neutral pH detergent. Dry buffing is optional but brings out MarbHD's beautiful natural luster.

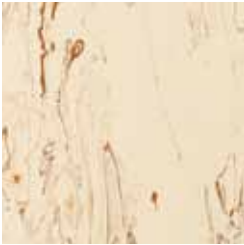
AVAILABLE
IN 14 EXCITING
NEW COLORS

MarbHD Technical Data

THICKNESS	SIZE
1/8"	18 1/8" x 18 1/8"



- Applicable Standards ASTM F-1344, Class 1B
- Indentation Resitance ASTM F970 - .000 inches residual indent @ 250 psi
- Flame Resistance ASTM E-648, Class 1



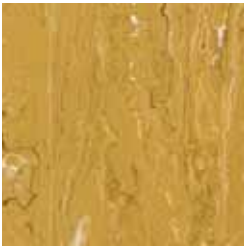
Light Burl HD 1



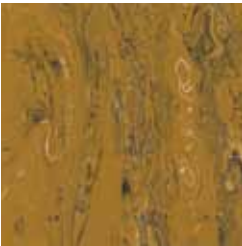
Amber HD 10



Limestone HD 8



Olivo HD 13



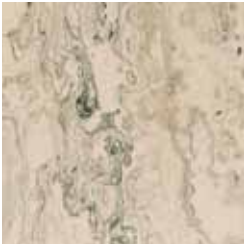
Dark Burl HD 5



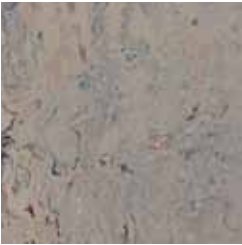
Dorato Brown HD 9



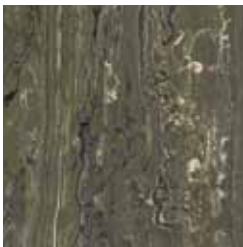
Sunset Orange HD 4



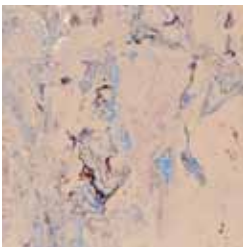
Genova Green HD 12



Ozark Gray HD 3



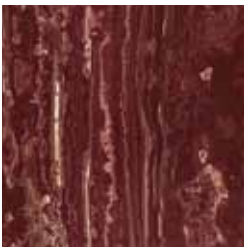
Camo HD 14



Tropic Sand HD 7



Lakeside Blue HD 6



Minuto Burgundy HD 11



Black Onyx HD 2



MARBLE

Burke Marble tile and stair treads offer a natural look while giving you all the benefits of rugged and comfortable rubber. Complement any interior while hiding the abuse of heavy traffic and maintain a completely color-coordinated installation.

As with all Burke rubber flooring products, durability, comfort, low absorption, and resistance to impact and static loads is assured while maintenance is kept to a minimum. The color pattern extends through the entire tile and coordinating accessories so colors will never wear off.

Most treads are available in Safety and Visually Impaired configurations so you can meet required governmental regulations while maintaining the resilient, colorful integrity of your original design.

Burke Marble is ideal for areas such as shopping malls, restaurants, office buildings, hospitals, airports, schools, and government buildings to name a few.

RUBBER TILE AND STAIR TREADS

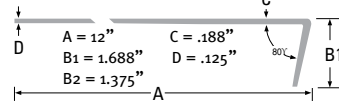
Marble Tile Technical Data

THICKNESS	SIZE
1/8"	12" x 12"

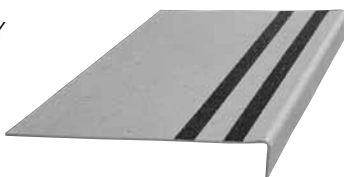
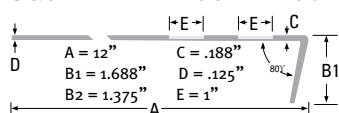
Applicable Standards	ASTM F-1344, Class 1B
Indentation	ASTM F970 - .000 inches residual indent @ 250 psi
Flame Resistance	ASTM E-648, Class 1



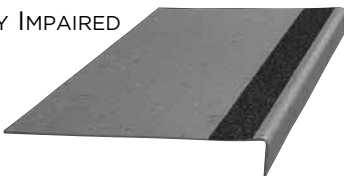
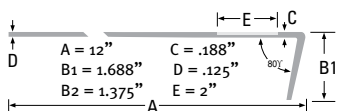
SQUARE AND ROUND NOSE - SMOOTH



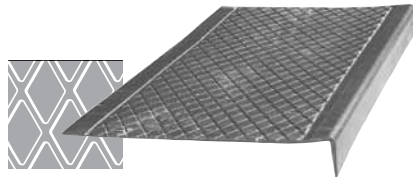
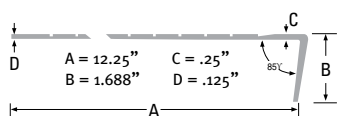
SQUARE AND ROUND NOSE - SAFETY



SQUARE AND ROUND NOSE - VISUALLY IMPAIRED

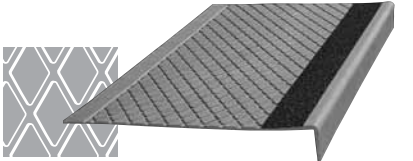
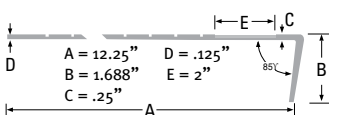


DIAMOND DESIGN



Diamond Tread available in ten solid colors shown only.

DIAMOND DESIGN - VISUALLY IMPAIRED



Diamond Tread available in ten solid colors shown only.

MARBLE SMOOTH AND DIAMOND STAIR TREADS TECHNICAL DATA

All of our flooring products conform to ADA Accessibility Guideline Requirements that floors be stable, firm, and slip-resistant.

Tread Lengths	3', 4', 5', 6'		
Accessories	1/8" Risers (7" height w/toe)	3', 4', 5', 6'	Minimums May Apply
	1/8" Risers (6" Cove)	4'	
	1/8" Skirting (10" toeless base)	4'	
Applicable Standards	Treads: ASTM F2169, Type TS, Class 1 & 2, Group 1 & 2 Risers & Skirting: ASTM F1861, Type TS, Group 1, Style A & B		
Flame Resistance	ASTM E-648, Class 1		
Indentation Resistance	ASTM F-970 - .000" residual indent at 250 PSI		



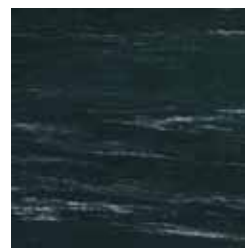
Visually Impaired Safety Treads meet California Disabled Access Regulation, Title 24, Section 3306 for the visually impaired when used with contrasting strip color.

Tape may be ordered separately for onsite installations.



Burke Marble tiles feature colors that coordinate with **Uni-Colors**

Please make final selection for all colors from actual product samples. Order samples at www.burkeflooring.com or call **800.447.8442 ext. 1031**.



701M
Ebony



505M
Oceanic

701
UNI-COLOR

505
UNI-COLOR



502M
Amethyst



527M
Clay

502
UNI-COLOR

527
UNI-COLOR



244M
Sandswirl



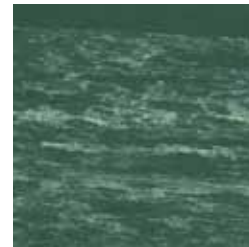
564M
Smoke

244

564



664M
Quarry



234M
Eden

664

234



217M
Silver



204M
Fog

217
UNI-COLOR



204
UNI-COLOR

Shades and patterns may vary. Burke Marble products are produced in a random marble fashion as marble is random in nature.

Endura's Skate and Spike Resistant Tile (SRT) withstands wear caused by spike and cleated athletic footwear and skate blades. It does not shred like carpeting, crumble or retain odors.

SRT's homogeneous construction, available in 6mm and 9mm thicknesses, provides the highest performance sports flooring solution available. SRT Solids and Flecksibles are available only in our sculptured profile.

SRT FLOORING TECHNICAL DATA

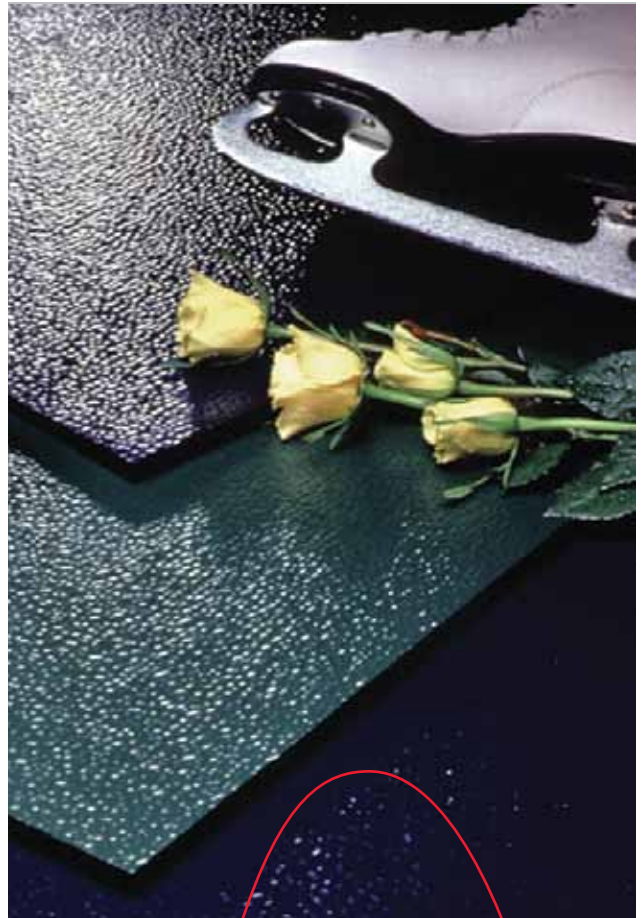
Thickness	Size
 .236" (6mm)	36" x 36"
 .354" (9mm)*	36" x 36"



All rubber flooring products manufactured by Burke meet guidelines established by ADA for walking surfaces and for ramps.

Applicable Standards ASTM F-1344, Class 1, A & B
 Flame Resistance ASTM E-648, Class 1

* 2,500 SQ. FT. Minimum



STANDARD SRT COLORS



204 Gray



206 Light Beige



217 Charcoal



701 Black



466 Toucan Red



260 Alpine Green



506 Tahoe



875 Navy



SRT™ SKATE & SPIKE RESISTANT FLOORING

SRT is available in the 8 standard Flecksibles colors and 8 standard colors shown. All other Flecksibles colors and Uni-Colors are available for a minimum order of 2,500 SQ.FT.

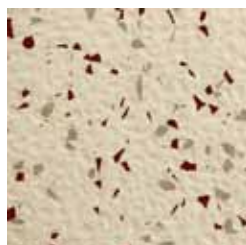
Custom colors available. Minimums apply. Please make final selection for all colors from actual product samples. To order samples go to www.burkeflooring.com or call **800.447.8442 ext. 1031**.

KEEP ▲ THE UNI-COLOR CHART ON INSIDE FLAP OPEN AS YOU USE THIS CATALOG

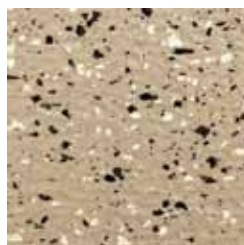
STANDARD FLECKSIBLES



011 Sahara Beige



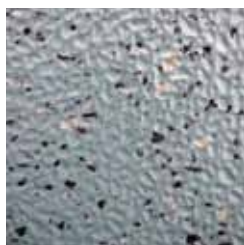
028 Prairie Blush



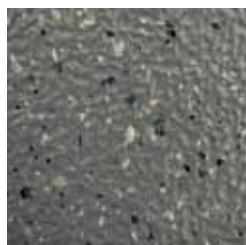
019 Barley Beige



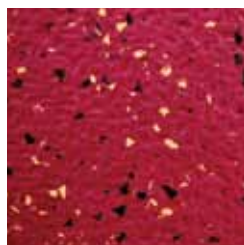
014 Granite Gray



013 Spruce Blue



010 Shale Gray



026 Tuesday's Ruby



012 Starlight Blue



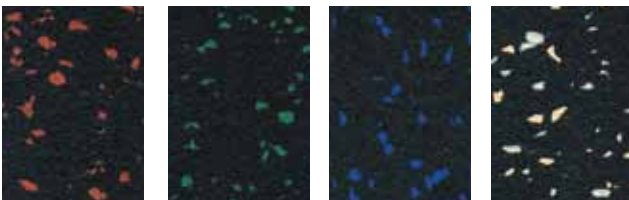
ECOFITNESS™ FLECKSIBLES & NATURALS

ECOFITNESS™ FLECKSIBLES

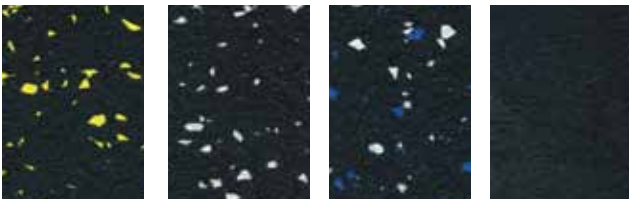


EcoFitness is designed for sports and fitness flooring as well as other interior applications. Easy to maintain, the non-slip surface provides excellent traction, cushioning and sound

absorption. Available in both rolls and interlocking floor tiles, the unique tab design of the interlocking tiles provides a virtually hidden seam while holding securely without the need of adhesives or tape. These tiles can easily be assembled and unassembled time and again without damaging the tiles. EcoFitness Flecksibles Collection is also available in 25' and 50' rolls for permanent, secure installation.



Red Green Blue Mocha



Yellow White Blue & White Solid Black



ECOFITNESS™ NATURALS



A stylish new look comes to environmentally friendly flooring made from recycled tires. EcoFitness Naturals Collection offers an interior application for sports and fitness



flooring where comfort, durability and design are major considerations. Naturals have a UV cured polyurethane wear layer for easy cleaning and provides excellent traction, cushioning and sound absorption. EcoFitness Naturals are only available in interlocking floor tiles.



Sky Stone Forest



Copper Sunset Ocean

ECOFITNESS™ FLECKSIBLES & NATURALS TECHNICAL DATA

Material	SBR bonded granular black recycled rubber with or without EPDM colored chips
Thickness	3/8" (9.5mm) +/- .005
Sizes	28.5" x 28.5" Interlocking 48" x 25' and 48" x 50' rolls in Flecksibles only
Density	ASTM D-3676 60 lb/ft ³ /980/kg/m ³



All rubber flooring products manufactured by Burke meet guidelines established by ADA for walking surfaces and for ramps.

Flame Resistance ASTM D-2859 (Pill Test) - Passed; Char Diameter = .0
Slip Resistance ASTM D 2047 - static coefficient of friction.
Hardness ASTM 2240 - not less than 55 Shore A

EcoFitness™ has a 5 year warranty.

MADE FROM RECYCLED TIRES



Earthtone

BURKETURF™ MADE FROM RECYCLED TIRES



Durable and environmentally friendly floor manufactured from recycled tires. Anti-slip flooring engineered for both indoor and outdoor installations. Perfect for damp or wet areas, ramps, entryways and concourses. Easy maintenance includes vacuuming and spot cleaning as needed. Outdoor installations can be hosed off and left to dry.



BURKETURF TECHNICAL DATA

Thickness	3/8" (± 1/8" Tolerance)
Tile Size	12" x 12"
Weight	2 lbs. per sq. ft.
Carton	25 Tiles

All rubber flooring products manufactured by Burke meet guidelines established by ADA for walking surfaces and for ramps.

Flame Resistance ASTM D-2859 (Pill Test) - Passed
Char Diameter = .672 s/b .672
Slip Resistance ASTM D 2047 - static coefficient of friction.
Hardness ASTM 2240 - not less than 85 Shore A



12 MIL LUXURY



THE GREEN STORY

Burke Luxury Vinyl Tiles and Vinyl Wood Planks combine the two most desirable attributes a floor can exhibit - beauty and durability - to give you a floor that's incredibly long-lasting and attractive.



Burke Luxury Vinyl is 67% post-consumer recycled pvc. Vinyl products that were previously discarded in a landfill are now reclaimed in a proprietary process.

LEED points are available for these products.

Burke Luxury Vinyl Natural Wood Planks replicate twelve different wood finishes in rustic and fine grains. Use a single finish, mixed finishes or combine our vinyl wood planks with our luxury vinyl slate, concrete, solid black or solid white tiles.

FINE GRAIN WOOD



VINYL TILE

NATURAL WOOD PLANKS

THE CLEAN STORY

Burke Luxury Vinyl Flooring is manufactured to include new germ killing technology designed to make your facility safer from bacteria such as staph and E.coli, viruses like rhinovirus and molds. NANO SILVER, extremely small particles of metallic silver, is added to Burke LVT giving a durable anti-microbial action. Silver particles are microscopic, making them invisible to the human eye. It just quietly goes about making businesses and environments safer places to be.

HOW DOES NANO SILVER WORK?

Luxury Vinyl Tile includes a process to add Ag+, Silver ions of nano size particles to safely coat floors, in a colorless anti-bacterial armor. Silver inhibits the growth of bacteria by deactivating the bacteria's oxygen metabolism enzymes. In turn, this destroys the bacteria cell membranes, killing the bacteria and stopping replication.



LUXURY VINYL TECHNICAL DATA

TYPE	HEIGHT	SIZE
Natural Wood Planks, LVT	1/8"	3.6" x 37.4" 7.2" x 37.4"

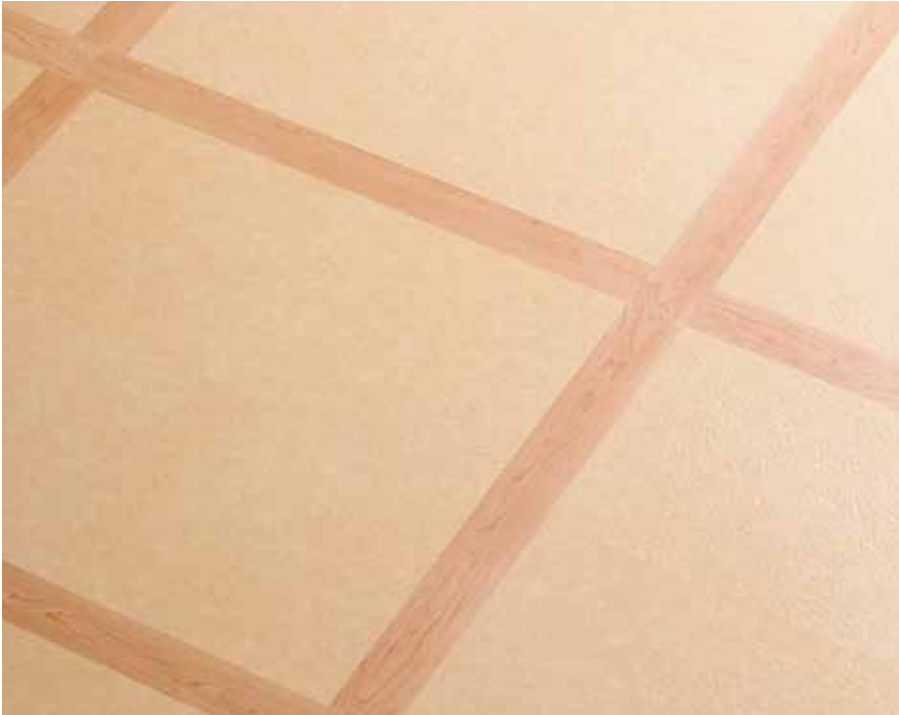
Applicable Standards ASTM F-1700, Class III, Type B
 Flame Resistance ASTM E-648 Class I
 Static load ASTMF970 < .005"

Luxury Vinyl Tile has a 10 year limited warranty for light commercial and 25 year limited warranty for residential applications.



*20 mil available upon request, minimum maybe required

RUSTIC WOOD



12 MIL LUXURY VINYL TILE SOLID, CONCRETE,



These Burke Luxury Vinyl Tiles with NANO SILVER are as clean and green as our Vinyl Natural Wood Planks. They simulate the look of nine varieties of slate and six shades of colored concrete. They are also available in the timeless classics - black and white.

Use them alone or combined with our Vinyl Wood Planks. Mix and match colors and textures to create checkerboards, borders or a myriad of other effects to complement your interiors.



SLATE



Metallic Bronze - LVT12-208B



Copper Slate - LVT12-200B



Golden Slate - LVT12-202B



Rusty Gray Slate - LVT12-204B



Metallic Platinum - LVT12-206B



Ivory Slate - LVT12-201B



Silver Slate - LVT12-203B

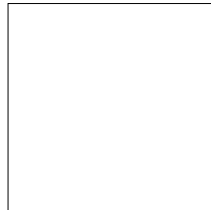


Metallic Iron - LVT12-205B



Metallic Jade - LVT12-207B

SOLID (TEXTURED MATTE FINISH)



White - LVT12-400 B



Black - LVT12-401 B

LUXURY VINYL TECHNICAL DATA

TYPE	HEIGHT	SIZE
Luxury Vinyl Tile, LVT	1/8"	18 1/2" x 18 1/2"

Applicable Standards
 Flame Resistance
 Static load

ASTM F-1700, Class III, Type B
 ASTM E-648 Class I Luxury
 ASTM F970 < .005"

Luxury Vinyl Tile has a 10 year limited warranty for light commercial and 25 year limited warranty for residential applications.

CONCRETE



Sunrise Beach - LVT12-700B



Concrete Suede - LVT12-701B



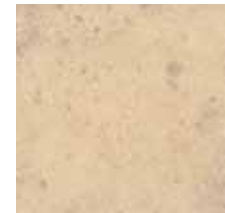
Red Giant - LVT12-702B



Sierra Blush - LVT12-703B



Seawash Patina - LVT12-704B



Ivory Sand - LVT12-705B

SLATE, GRANITE, TRAVERTINE & NATURAL STONE

GRANITE



Iron Ore - LVT12-1113



Spanish Stone - LVT12-1115



Pearl - LVT12-1117



Quarry - LVT12-1118

TRAVERTINE



Toasted Almond - LVT12-2561



Alabaster - LVT12-2565



Magnetic Gray - LVT12-2566



Smoke - LVT12-2567

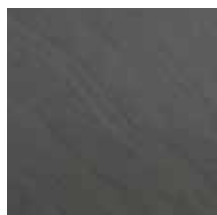
NATURAL STONE



Sand Stone - LVT12-1912



Gray Stone - LVT12-1913



Iron Stone - LVT12-1914

LUXURY VINYL TECHNICAL DATA

TYPE	HEIGHT	SIZE
Granite	1/8"	12" x 24"
Travertine	1/8"	12" x 24"
Natural Stone	1/8"	17.72" x 35.43"
Country Naturals	1/8"	6" x 48"
Applicable Standards	ASTM F-1700, Class III, Type B	
Flame Resistance	ASTM E-648 Class I Luxury	
Static load	ASTMF970 < .005"	

20 MIL LUXURY VINYL HANDSCRAPED WOOD

COUNTRY NATURALS



Ebony - LVT20WB-2360



Persimmon - LVT20WB-2361



Hickory - LVT20WB-2362



Pecan - LVT20WB-2365



Light Oak - LVT20WB-2367



Medium Oak - LVT20WB-2368



Red Oak - LVT20WB-2369



Mesquite - LVT20WB-2401

6 MIL LUXURY VINYL TILE

FINE GRAIN, RUSTIC, CERAMIC & SLATE

FINE GRAIN



Light Oak - LVT6-B304B



Medium Oak - LVT6-B305B



Red Oak - LVT6-B306B



Dark Oak - LVT6-B307B

RUSTIC



Pecan - LVT6W-B900B



Gunstock - LVT6W-B901B



Cinnamon - LVT6W-B902B



Teak - LVT6W-B903B



Walnut - LVT6W-B904B



Coffee - LVT6W-B905B

SLATE



Gold Rush - LVT6-B2284



Mineral Rock - LVT6-B2285

CERAMIC



Clay Beige - LVT6-B604B



Natural Beige - LVT6-B605B



Lava Red - LVT6-B606B

LUXURY VINYL TECHNICAL DATA

TYPE	HEIGHT	SIZE
Fine Grain	0.08"	3.6" x 37.4"
Rustic	0.08"	7.2" x 37.4"
Ceramic	0.08"	18.5" x 18.5"

Applicable Standards	ASTM F-1700, Class III, Type B
Flame Resistance	ASTM E-648 Class I Luxury
Static load	ASTMF970 < .005"

SPECTRAJET CUSTOM ART, LOGOS AND PATTERNS

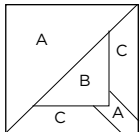


Virtually any logo or special design can be custom-created using most standard colors and patterns. Simply submit your artwork and we'll get you a detailed quote.

Want to design a custom pattern for a striking effect to style to an otherwise monolithic floor? It's easy. Decide on a pattern. Select colors and textures of our flooring for each of the designated areas.

Then have some fun!

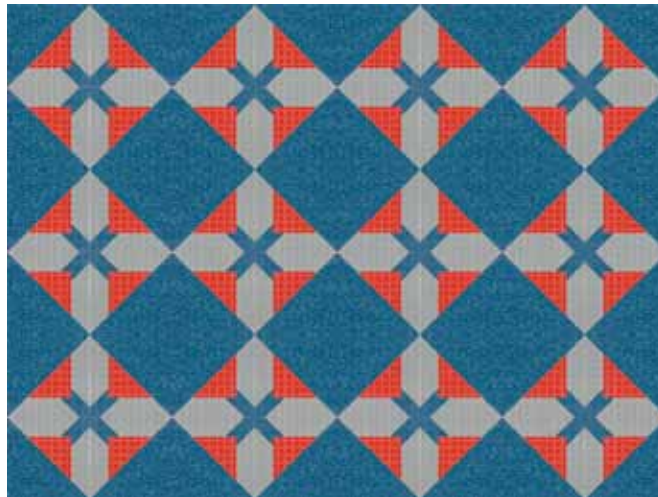
We'll turn this...



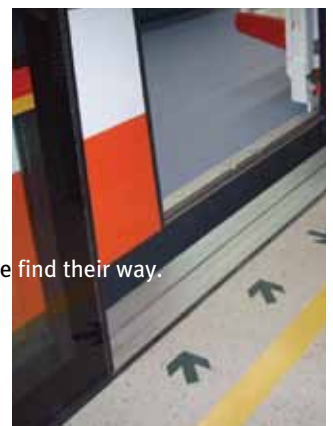
into this...



which you can turn into this...



AND... creative usage can help people find their way.





STAIR TREADS

RISERS

TILE

SKIRTING

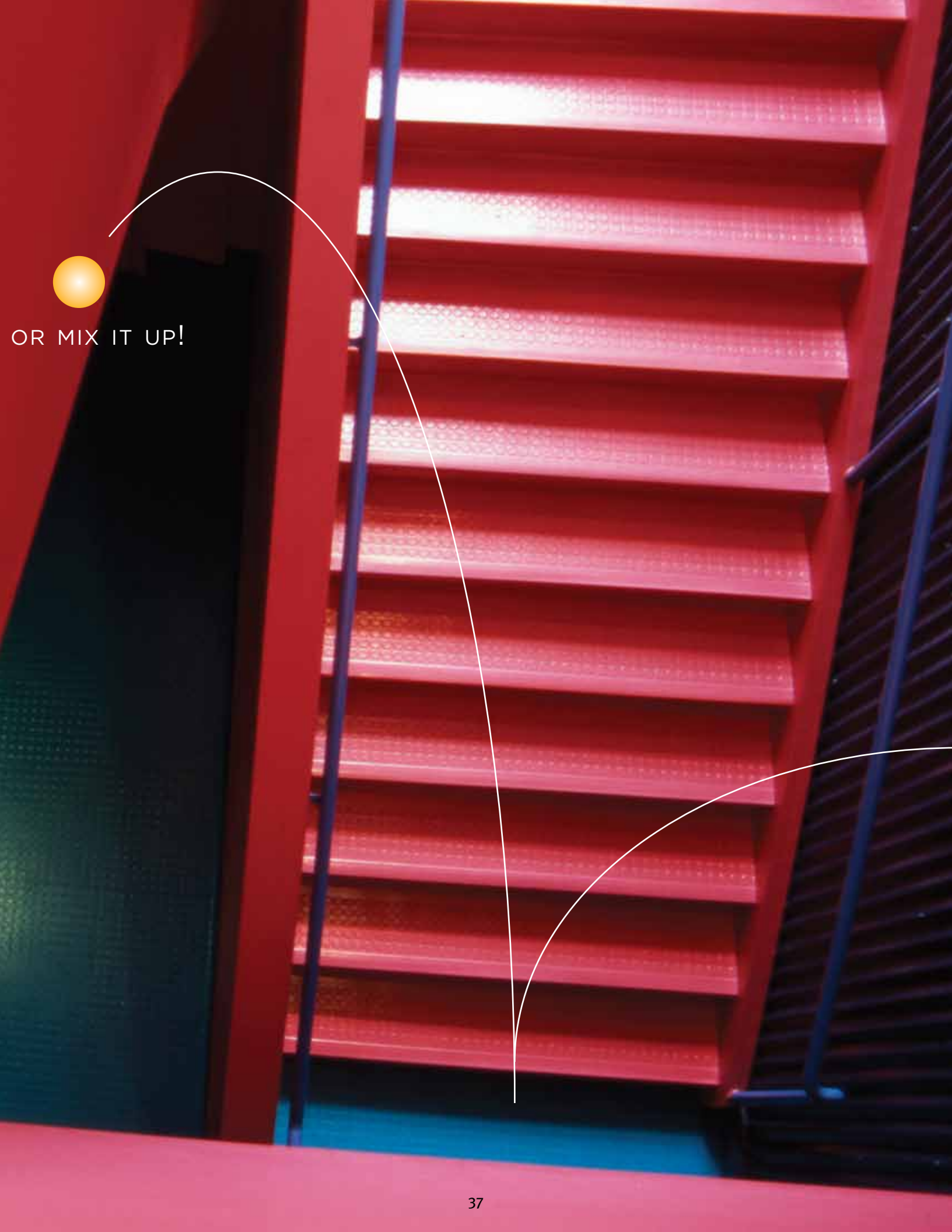
NOSING

COLOR COORDINATE YOUR NEXT INSTALLATION

We have you covered from the ground up.

Burke makes it easy to color coordinate your projects. You have a broad range of standard colors to choose from for your installation: 20 Uni-Color® System colors, as well as many additional colors. Custom colors are also available with minimum order requirements.

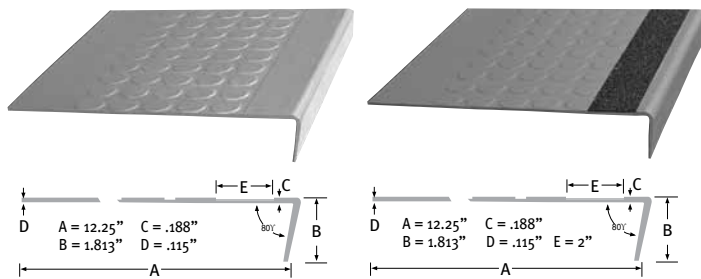
BURKE STAIR SYSTEMS



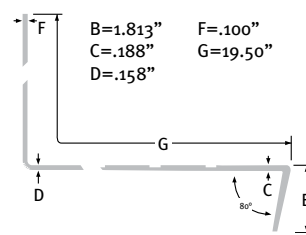
OR MIX IT UP!



ROUND PROFILE - SQUARE NOSE & VISUALLY IMPAIRED

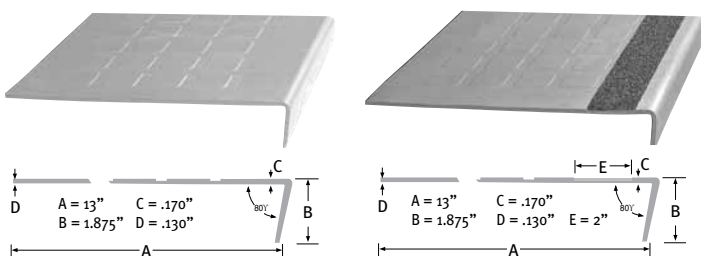


UNI-STEP™ ROUND PROFILE - SQUARE NOSE & VISUALLY IMPAIRED



The Uni-Step™ tread/riser combination provides a unique one-piece solution for fast and clean stair tread installations. The seamless flow from tread to riser also gives you an easy to clean surface.

SQUARE PROFILE - SQUARE NOSE & VISUALLY IMPAIRED



STAIR SYSTEM: TILE, TREADS & RISERS

Rouleau® blends style, color, and performance into a naturally beautiful floor covering. Rouleau gives you impressive durability and comfort while creating an impressive look. Its gently raised round and square profiles provide a slip-resistant surface. The unique composition and design of Rouleau resists scuffing, gouging, cigarette burns, and most chemicals.

Not only does rubber provide a beautiful look, but it also provides insulation for warmth and cushioning for walking comfort. Rouleau Tile is available in 20 Uni-Color System colors and custom colors may be special ordered.

Available in all **Uni-Colors**

Custom colors available. Minimums apply. Please make final selection for all colors from actual product samples. To order samples go to www.burkeflooring.com or call **800.447.8442 ext. 1031**.

ROULEAU® TILE - TECHNICAL DATA

All of our flooring products conform with ADA Accessibility Guideline Requirements that floors be stable, firm, and slip-resistant.

Relief Shape	Thickness	Size	Profile
Round	.12"	19.68" x 19.68"	.015" Raised
Square	.125"	18" x 18"	.025" Raised

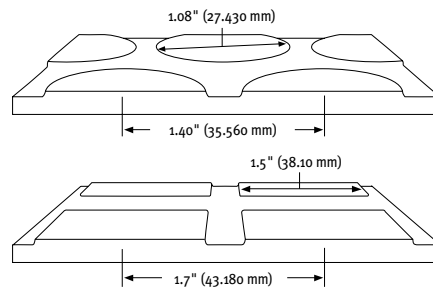


Applicable Standards
 Indentation Resistance
 Flame Resistance

Tile: ASTM F-1344, Class 1A
 ASTM F970 - .000" residual indent at 250 PSI
 ASTM E-648, Class 1



ROULEAU® PROFILE DETAIL



ROULEAU® STAIR TREAD - TECHNICAL DATA

All of our flooring products conform with ADA Accessibility Guideline Requirements that floors be stable, firm, and slip-resistant.

	Lengths	VI Strips	Relief
1/8" Round Profile	3', 4', 5', 6'	option	Round
1/8" Square Profile	3', 4', 5', 6'	option	Square
1/8" Uni-Step™ Round Profile	3', 4', 5', 6'	option	Round
1/8" Risers (7" height w/toe)	3', 4', 5', 6'	n/a	none
1/8" Risers (6" Cove)	4'	n/a	none
1/8" Skirting (10" toeless base)	4'	n/a	none



Applicable Standards
 Indentation Resistance
 Flame Resistance

Treads: ASTM F2169, Type TS, Class 2, Group 1 & 2
 Risers & Skirting: ASTM F1861, Type TS, Group 1, Style A & B
 ASTM F970 - .000" residual indent at 250 PSI
 ASTM E-648, Class 1

Visually Impaired Safety Treads meet California Disabled Access Regulation, Title 24, Section 3306 for the visually impaired when used with contrasting strip color.

Tape may be ordered separately for onsite installations.



LINEAR SERIES™ STAIR TREADS AND RUBBER STAIR

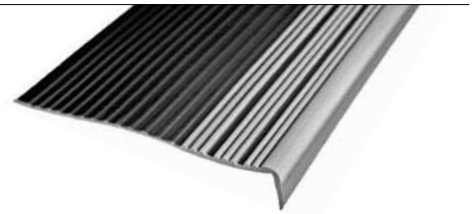
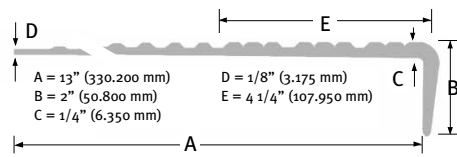
Linear Series Stair Treads have a unique grooved surface for improved traction and good looks.



A variety of designs are available to meet ADA requirements as well as meeting a wide range of budgets.

12" Rubber and Vinyl Stair Treads are also available.

MAXXI-TREAD® - VINYL AND RUBBER

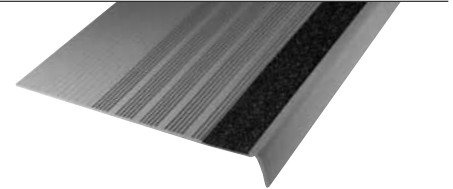
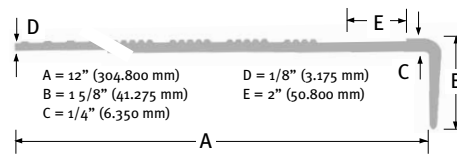


- Design: Contrasting Color Cleats

Available in 5 predetermined color combinations with cleats for maximum slip-resistance as shown. Also, any color combination of the 20 Uni-Color tread colors can be special ordered, minimum quantities apply.



VISUALLY IMPAIRED SAFETY TREADS - VINYL AND RUBBER



- Design: 2" (50.800 mm) Abrasive Strip

Visually Impaired Safety Treads meet California Disabled Access Regulation, Title 24, Section 3306 for the visually impaired when used with contrasting strip color.

Available in any of the 20 Uni-Color System colors and the 9 Abrasive Strip Insert colors below.



Tape may be ordered separately for onsite installations.

LINEAR SERIES™ TECHNICAL DATA

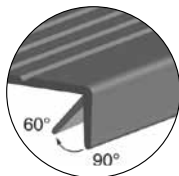
All of our flooring products conform with ADA Accessibility Guideline Requirements that floors be stable, firm, and slip-resistant.

Product	Lengths
Ribbed Linear Stair Tread, Vinyl or Rubber	3', 3 1/2', 4', 5', 6', 8', 12' (packaged 5 per carton)

Accessories	Lengths
.085 Stringers	10" x 50'
.085 Risers (Cove)	7" x 50'

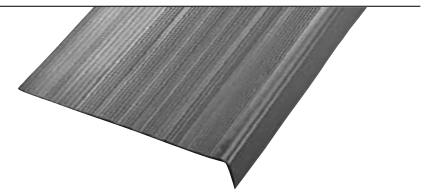
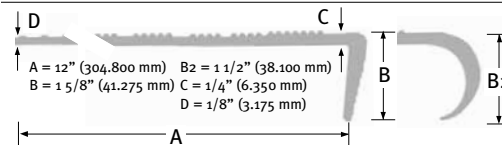
ADA

FLEXIBLE NOSE FOR EASY COMPLIANCE



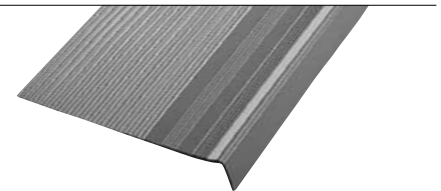
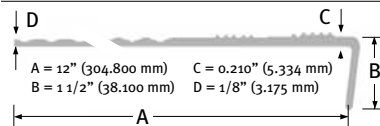
All Linear Series™ Stair Treads have a notch behind the nose for increased flexibility. The ADA requires nosing angles to be between 60° and 90° from the horizontal. This product modification will allow the nosing position of these products to more easily conform to the steps' nosings that have been built to the severest angle allowed by the ADA (60°).

COMMERCIAL 250: HEAVY TRAFFIC - VINYL AND RUBBER



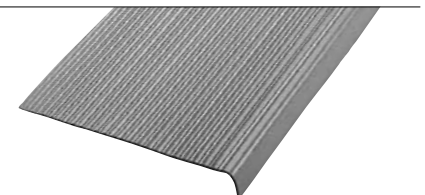
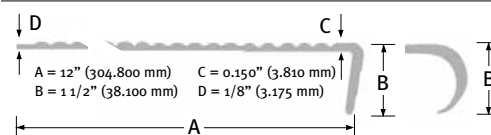
- Design: Six-Grip Strip

COMMERCIAL 210: NORMAL TRAFFIC - VINYL ONLY



- Design: Pyramidal Gripper
- Square Nose only

COMMERCIAL 150: LIGHT TRAFFIC - VINYL ONLY



- Design: Full Depth Corrugation

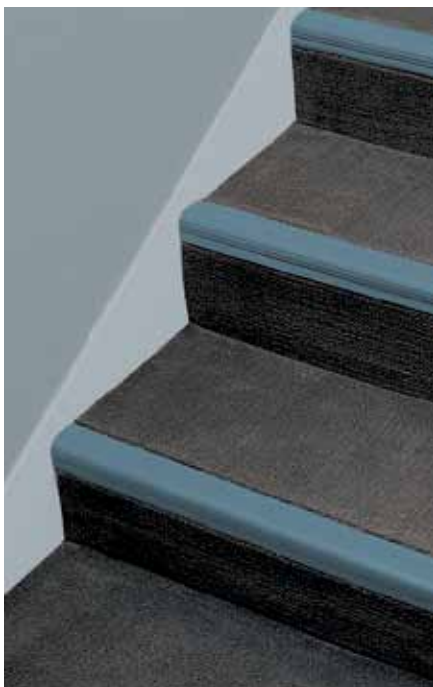
Available in all **Uni-Colors**

Custom colors available. Minimums apply. Please make final selection for all colors from actual product samples. To order samples go to www.burkeflooring.com or call **800.447.8442 ext. 1031**.

NOSINGS

STAIR NOSINGS – VISUAL SAFETY

The 2 inch slip-resistant polyurethane insert is for slip-resistance and contrasts with the background nosing to increase vision at steps for visually impaired requirements. All Stair Nosings meet the California Disabled Access Regulations Title 24, Section 3306(r), striping for the visually impaired when used in contrasting color to step material.



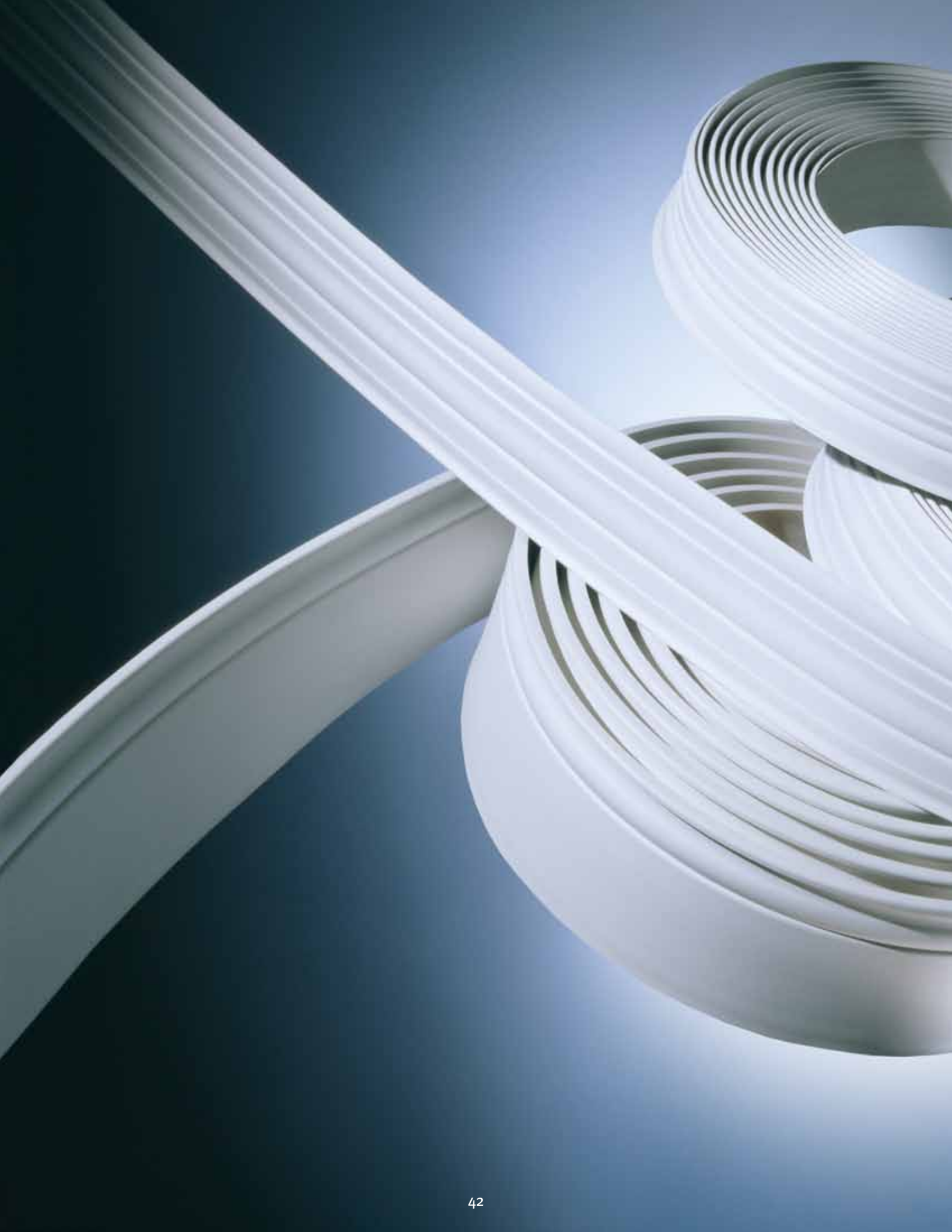
Linear Series Stair Nosings are the industry standard for design, function, and color. All are available in rubber, and come in the complete Uni-Color System palette for easy color coordination.

SPECIFICATIONS FOR LINEAR SERIES STAIR TREADS AND STAIR NOSINGS

ADA	Stair Nosings meet the requirements of sections 4.5.2 (change in level) and 4.5.3 (carpet-edge trim compliance) of the Americans with Disabilities Act (ADA).	
	Accessories	.085" Stringers 10" x 50" .085" Risers (Cove) 7" x 50"
Composition	Thermoplastic Rubber and Thermoplastic Vinyl	
Application	All stair treads and nosings manufactured for heavy traffic areas	
Applicable Standards	Class 1 Fire Rated (ASTM E-648) ADA and California Title 24, Section 3306 (r) (Slip Resistance) and (r)2 (nosing projection)	

PART NUMBER	PROFILE	DESCRIPTION
557 Visual Safety Nosing		Contrasting insert for Visually Impaired. Accepts 1/4" with lip. Packing: 6-12' secs., 72 ft. per carton Available in any interchangeable combination of the 20 Uni-Colors.
577 Visual Safety Nosing for 1/8" Material		Contrasting color insert for Visually Impaired. Packing: 10-12' secs., 120 ft. per carton Available in any interchangeable combination of the 20 Uni-Colors.
578 Visual Abrasive Safety Nosing for 1/8" Material		Visual Abrasive Safety Nosing for 1/8" Material. Packing: 10-12' secs., 120 ft. per carton Available in any of the 20 Uni-Colors and the 9 Abrasive Strip Insert colors on facing page.
STAIR NOSINGS		
510 Top-Set Nosing (Square Nose)		Covers leading edge of step. May be used over vinyl and sheet goods. Packing: 20-12' secs., 240 ft. per carton
511 Top-Set Nosing (Round Nose)		Covers leading edge of step. May be used over vinyl and sheet goods. Packing: 20-12' secs., 240 ft. per carton
560 Double Butt Carpet Stair Nosing		For square nose step. Double butt edge; smooth surface; accommodates step and riser. For 1/4" carpet installations. Packing: 10-12' secs., 120 ft. per carton
565 Double Undercut Carpet Stair Nosing		For 1/4" and 5/16" carpet. Accommodates step and riser; with ribbed surface. Packing: 10-12' secs., 120 ft. per carton
566 Double Undercut Carpet Nosing - 3/8"		Accommodates 3/8" Multi-Purpose resilient flooring or carpet on both step and riser. Packing: 4-12' secs., 48 ft. per carton
570 Superior Carpet Stair Nosing		Friction-Grip nosing for use when only step is covered. Undercut for 1/4" and 5/16" carpet. Packing: 10-12' secs., 120 ft. per carton
575 Overlap Stair Nosing		Nosing with deep grooves and overlap lip. Accepts material to 1/8" with lip, to 3/16" without lip. Packing: 10-12' secs., 120 ft. per carton
580 Commercial Step Nosing		Square step nosing for 1/8" material. Ribbed surface. Packing: 10-12' secs., 120 ft. per carton
585 Top-Set Nosing for 1/4", 1/8" or .080" Material		Ribbed surface nosing can be cut along pregrooved channels to adjoin 1/4", 1/8" or .080" resilient flooring materials. Packing: 10-12' secs., 120 ft. per carton
ESN Stair Nosing		Deep reach nosing for top step or landing area installations. Buts to .100" or 1/8" flooring. Packing: 10-12' secs., 120 ft. per carton

Note: All Nosings are 12' lengths, 120' per package.





PROFILES DESIGNER WALL BASE

NOT JUST A PRETTY FACE 15 styles that are more economical than wood.



PROFILES DESIGNER WALL BASE

A WIN, WIN FOR THE WYNN HOTEL IN LAS VEGAS.

Profiles Wall Base is a flexible, thermoplastic rubber wall base that simulates painted, sculpted wood base moulding. It is more economical than traditional wood base and is great for remodel or new construction in commercial, institutional, or hospitality settings. It is dent and scratch resistant and requires no painting.

Profiles' flexibility makes it great for straight or curved walls while hiding imperfections. Continuous, seamless rolls are perfect for large areas. Pre-cut inside or outside corners can be ordered from the factory. Base also curves around 10" plus columns for a great architectural finish.

Profiles Wall Base is easily installed with Burke acrylic cove base adhesive. No nailing, priming, painting, or heavy cleanup required.

PROFILES WALL BASE TECHNICAL DATA

PROFILE	THICKNESS AT TOE	HEIGHT	ROLL LENGTH
Colonial	.500"	3.00"	50'
Colonial	.359"	4.25"	50'
Classic	.375"	3.25"	36'
Palatial	.1875"	6.00"	36'
Art Deco	.375"	4.25"	50'
Chamfered	.375"	4.25"	50'
Montego	.375"	5.25"	25'
Sculptured	.375"	4.25"	50'
Modest	.313"	4.50"	36'
Revelation	.250"	4.25"	50'
Replica	.250"	4.25"	50'
Elusive	.313"	3.00"	50'
Contemporary	.313"	4.50"	36'
645 Quarter Round	.500"	0.50"	-
650 Chair Rail	.250"	4.00"	-
696 Corner Guard	.375" Designed to complement Profiles		8' lengths

Composition
Thermoplastic Rubber

Applicable Standards
ASTM F1861, Type TP,
Group 1, Styles A & B

Flame Resistance
ASTM E-648 Class 1



Contemporary 4.5"



Classic 3.25"



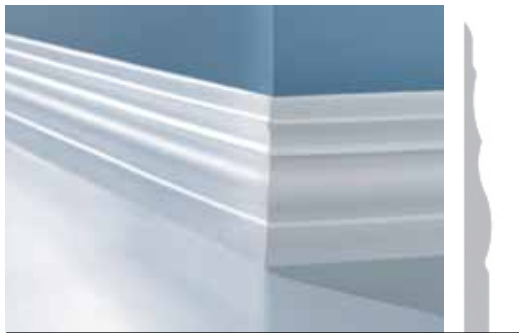
Montego 5.25"



Palatial 6"



Colonial 3"



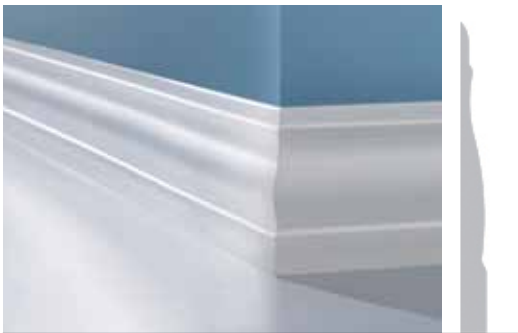
Sculptured 4.25"



Replica 4.25"



Elusive 3"



Chamfered 4.25"



Modest 4.5"



Revelation 4.25"



Art Deco 4.25"



Colonial 4.25"



Quarter Round .5" Chair Rail 4" and Corner Guard

Available in all **Uni-Colors**
 PLUS
 244 Off White
 401 White
 403 Almond
 106 Pearl Luster Metallic
 117 Platinum Metallic
 See page 49 for Wall Base Color Chart
 Custom colors available.
 Minimums apply. Please make final selection for all colors from actual product samples. To order samples go to www.burkeflooring.com or call **800.447.8442 ext. 1031**.



COMMERCIAL WALL BASE

HAVE IT **YOUR WAY.**

BurkeBase® THERMOSET RUBBER, **RubberMyte**® THERMOPLASTIC RUBBER OR **Mercer**® VINYL

NEVER

cut corners again with **CORNER READY**



by Burke

Now available for **RubberMyte**® Patent No. 7.914.878

Eliminate the need for pre-manufactured corners with Corner Ready. Corner scores are built in, reducing cracking due to poor scoring technique. Reduce installation time, guarantee that straight lengths and corners are a color match and eliminate time consuming pre-planning for corners.



Every piece is pre-grooved for straight corner use.



Just fold toe upward and crease along the groove.



So fast and easy to install.



Creates a clean, crisp corner every time.



- Every piece is pre-grooved and ready to make an outside or inside corner.
- Consistent groove depth prevents “cut through,” cracking and white out at the corner.
- Eliminates the need for “Factory-Made” corners.
- No need to separately estimate and order corners.
- Corners always match adjoining wall base in height and color.
- Longer length return on either side of the corner means more “bump-off” resistance.
- Groove does not “telegraph” if not used as a corner.

COMMERCIAL WALL BASE

THERMOSET RUBBER

BurkeBase® Rubber Wall Base Type TS

Burke's premium molded wall base, unsurpassed in quality and performance; the perfect choice for your next installation. BurkeBase® is vulcanized thermoset rubber and molded to provide the dimensional consistency and stability that prevents unsightly shrinkage or expansion. BurkeBase wraps around corners, columns, and curved walls with a special positive top return that ensures a snug wall fit. BurkeBase's natural satin finish works well with varying textures of flooring and walls. The complete Uni-Color™ System of 20 colors is available to match the entire line of Burke Flooring products, including Tile, Stair Treads, Mouldings, and accessory products. An additional 55 wall base colors offer a wide array of sophisticated hues. Custom color matching is always available when you need to expand on our standard color palette.

Benefits

- Vulcanized thermoset rubber to prevent shrinkage or expansion
- Molded to provide dimensional stability
- Smooth satin finish and inherent flexibility helps hide substrate irregularities
- Available in 4' molded lengths

Technical Data

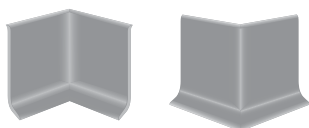
TYPE & THICKNESS	HEIGHT	LENGTH	COLORS
1/8" Cove Base	2.5", 4", 6"	4'	75
1/8" Toeless Base	2.5", 4", 6", 10"	4'	75
1/8" Cove Inside & Outside Corners	2.5", 4", 6"	3" wings	75
1/8" Cove Outside Corners	4"	5" wings	75
1/8" Toeless Base - Outside Corners Only	4", 6"	3" wings	75

Composition Thermoset Vulcanized Rubber Base
 Applicable Standards ASTM F1861, Type TS, Group 1, Styles A and B
 ASTM E84 Class B rating with smoke density of 150-200
 ASTM E 648 Class I

Inside Corners not available for Carpet (toeless) Base.

Molded Rubber Wall Base Corners

Inside and outside corners are molded to match all wall base sizes except 10" and toeless base.



THERMOPLASTIC RUBBER

RubberMyte® Rubber Wall Base Type TP

Formulated to resist scuffs or abrasions, RubberMyte® Wall Base is a coextruded thermoplastic rubber that will not fade or crack and easily forms to curves and corners for a clean installation. RubberMyte® Wall Base is available in 81 standard colors including the 20 Uni-Color System colors that match the entire line of Burke Flooring products that includes Tile, Stair Treads, Mouldings and accessory products. A range of hues to complement any decor.

Benefits

- Heavy gauge rubber base
- Flexible formulation easily forms to curves and corners for a clean installation
- Will not fade or crack
- Scuff and scratch resistant
- Available in 4' lengths and 100' seamless rolls
- 81 standard colors including 20 Uni-Color® System colors

Technical Data

TYPE & THICKNESS	HEIGHT	LENGTH	COLORS	CORNERS
1/8" Cove Base	2.5", 4", 4-5", 6"	4' lengths 100' rolls	81	IS, OS
1/8" Toeless Base	2.5", 4", 6"	4' lengths 100' rolls	81	IS, OS
Composition	Thermoplastic Rubber			
Applicable Standards	ASTM F1861, Type TP, Group 1, Styles A & B ASTM E84 Class C ASTM E648 Class 1			

RubberMyte® is now available in convenient CORNER READY 4" coved lengths.



Available in all **Uni-Colors**

Custom colors available.
 Minimums apply. Please make final selection for all colors from actual product samples. To order samples go to www.burkeflooring.com or call **800.447.8442 ext. 1031**.

VINYL

Mercer® Vinyl Wall Base Type TV

Our Mercer® Vinyl Wall Base gives you years of lasting protection. It's available in the 81 standard wall base colors, including the Uni-Color® System of 20 colors, providing an economical way to match the entire line of Burke flooring products, including Tile, Stair Treads, Mouldings, and accessory products. Mercer Vinyl Wall Base performs well around curved walls and corners to give your installation a perfect final touch. Mercer Vinyl Wall Base has a matte finish that coordinates nicely with a variety of patterns and textures in both flooring and carpet. When you're ready to specify vinyl base, remember the quality and vast product selection of Mercer Vinyl Wall Base.

Benefits

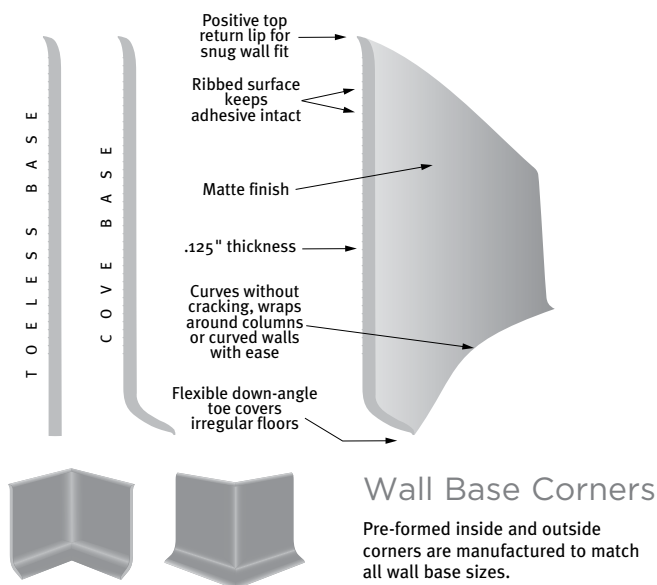
- Engineered for heavy traffic and high maintenance areas
- Scuff and abrasion resistant
- Tough matte finish helps hide substrate irregularities
- Available in .080" and .125" gauges

Technical Data

TYPE & THICKNESS	HEIGHT	LENGTH	COLORS	CORNERS
.080" Cove Base	2.5", 4", 6"	4', 100' rolls	81	IS, OS
.080" Toeless Base	2.5", 4", 6"	4', 100' rolls	81	IS, OS
1/8" Cove Base	2.5", 4", 4.5", 6"	4', 100' rolls	81	IS, OS
1/8" Toeless Base	2.5", 4", 6"	4', 100' rolls	81	IS, OS

Composition Thermoplastic Vinyl

Applicable Standards ASTM F1861, Type TV, Group 1, Styles A & B
 ASTM E84 Class C
 ASTM E648 Class 1



Additional Color Palettes

COLORS					
205 CREAM	350 WHEAT	305 CAMEL	246 KHAKI	512 AUTUMN OAK	200 BASIC BROWN
622 ROSY CLAY	211 MAUVE	434 CHERRYWOOD	425 MERLOT	490 PLUMBERRY	485 PLUM PURPLE
820 DAFFODIL	479 ORANGE CRATE	491 NEON PINK	301 RED RED	495 ROYAL PURPLE	810 STEEL GRAY
664 MIST	711 SHALLOW SEA	520 DUSK BLUE	385 PEWTER BLUE	556 BLUE DENIM	335 HEDGE GREEN
383 LEMON LIME	242 OLIVE	375 BAY LEAF	253 DARK TEAL	234 NOBLE FIR	333 HUNTER GREEN
NEUTRALS					
170 BRIGHT WHITE	401 WHITE*	168 BLUIISH WHITE	137 PEARL	403 ALMOND	150 NOUGAT
508 TWEED	244 OFF WHITE	517 HONEY	514 SAVANNAH	564 SMOKE	261 TAUPE
503 GINGER	860 DARK BRONZE	317 GREIGE	203 BEIGE	201 CHOCOLATE	104 FUDGE
672 GRAY BLUE	603 ASH	209 GRAY-BEIGE	850 STERLING GRAY	727 THUNDER	103 ESPRESSO
METALLICS*					
890 MUSHROOM	674 CARMINE GRAY	108 BRONZE METALLIC	123 COPPER METALLIC	116 GOLD METALLIC	117 PLATINUM METALLIC
106 PEARL LUSTER					

* Not available in BurkeBase Rubber Type TS



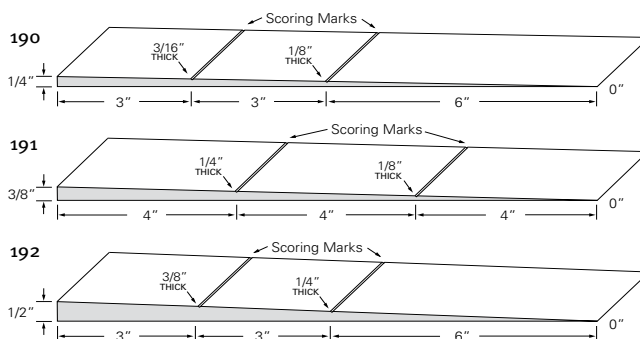
THE EQUALIZER SUBFLOOR TRANSITION SYSTEM

MAKE A SMOOTH
TRANSITION FROM
CARPET TO TILE OR TILE TO WOOD OR...

Transitioning subfloors is now quick and easy. No curing. No delays. Leveling is done in no time. Burke Subfloor Transitional Reducers solves the problem of slight differences in elevation between flooring surfaces. Traditional methods of using patching compounds is eliminated, so transitions are done more quickly and more accurately.

Advantages include:

- Scoring marks placed at common thicknesses
- No waiting time for leveling compounds to cure
- Ribbed back helps promote better adhesion
- Designed to be installed over concrete, wood, and steel subfloors
- Made from an environmentally friendly recycled thermoplastic compound



190: Reducer to 1/4" to 0". Can be cut at scoreline to reducer height as indicated. Packing: 10-4' sections, 40 ft. per carton

191: Reducer to 3/8" to 0". Can be cut at scoreline to reducer height as indicated. Packing: 5-4' sections, 20 ft. per carton

192: Reducer to 1/2" to 0". Can be cut at scoreline to reducer height as indicated. Packing: 5-4' sections, 20 ft. per carton

SPECIFICATIONS

Fire Resistance	ASTM E-648 Critical Radiant Heat Flux - Class I
Slip Resistance	ASTM D-2047 - Exceeds Federal Standards and ADA requirements
Hardness	ASTM 2240 - not less than 85 Shore A
Static Load Limit	ASTM F-970 - 0.0% (.000") @ 250 lbs. after 24 hrs.
Abrasion Resistance	ASTM D-3389 - less than 1 mg/cycle

MERCER® VINYL MOULDINGS*

JOINING MOULDINGS

Joining mouldings help to join two different types and/or thicknesses of flooring to each other.

PART NUMBER	APP	PROFILE	DESCRIPTION	PACKAGING
150 Tile-Carpet Joiner	RES		One-piece moulding. Joins 1/4" carpet to 1/8" tile.	25-12' secs. Per carton (300 feet)
152 Carpet to Resilient Transition	CAR RES		Transitions 1/4" or 5/16" glue-down carpet to 1/16" to 1/8" resilient.	20-12' secs. Per carton (240 feet)
153 Cerco Bar-3/8"	CAR CER WD		One-piece moulding for joining 5/16" carpet to 3/8" ceramic materials.	10-12' secs. Per carton (120 feet)
360 Cerco T	CAR CER WD		Snap-in T moulding. Joins 1/2" material. Uses 970, 980, or 990 track only.	20-12' secs. Per carton (240 feet)
365 Cerco Edge T	CAR RES CER WD		Joins 1/2" material to lesser-gauge material. Uses 970, 980, or 990 track only.	20-12' secs. Per carton (240 feet)
370 End Cap T	CAR CER WD		Butts up against edge of 1/2" material to lesser-gauge material. Uses 970, 980, or 990 track only.	20-12' secs. Per carton (240 feet)
710 Carpet to Resilient Transition	CAR RES		Transitions 5/16" glue-down carpet to 1/8" resilient.	10-12' secs. Per carton (120 feet)
930 Snap-Down T	CAR RES		Snap-in T moulding. Joins 1/4" or 5/16" material on each side. Uses 970, 980, or 990 track only.	20-12' secs. Per carton (240 feet)
935 Super 2" T	CAR RES		Snap-in T moulding. Joins 1/4" or 5/16" material on each side. Uses 970, 980, and 990 track only.	20-12' secs. Per carton (240 feet)
940 Standard Edge T	CAR RES		Joins 1/4" to lesser-gauge. 1 1/8" wide; 1/4" leg. Uses 970, 980, or 990 track only.	20-12' secs. Per carton (240 feet)
970 Single Flange Vinyl Track			For 1/4" and 1/2" leg T portions. Use with 360, 365, 930, 935 & 940 T's.	20-12' secs. Per carton (240 feet)
975 Vinyl Track Extender			Adds height up to 5/8" on Snap-in T moulding for ceramic, wood, and laminates. Use with 970 track for 360, 365, 930, 935, and 940 T's.	20-12' secs. Per carton (240 feet)
980 Pinless Metal Track			Designed to install T mouldings 360, 365, 930, 935 and 940. Aluminum.	48-12' secs. Per carton (576 feet)
990 Metal Track with pins			Designed to install T mouldings 360, 365, 930, 935 and 940. Aluminum.	48-12' secs. Per carton (576 feet)

COVE SUPPORTS

Cove supports support sheet vinyl when covered up the wall.

070 Cove Stick (Flexible) (401 White only)	RES		Quarter-round. Supports sheet goods for coving. Forms 1" radius at 90° installation.	5-20' coils Per carton (100 feet)
075 Cove Stick (Semi-Rigid) (400 Natural only)	RES		Quarter round. Supports sheet goods for coving. Forms 1" radius at 90° installation.	100-5' secs. Per carton (500 feet)
725 Merstick (400 Natural only)	RES		Coving support for sheet vinyl. Replaces wood cove. Forms 1" radius at 90° installation.	100-5' secs. Per carton (500 feet)

Available in all **Uni-Colors**

Custom colors available. Minimums apply. Please make final selection for all colors from actual product samples. To order samples go to www.burkeflooring.com or call **800.447.8442 ext. 1031**.



Mercer® Mouldings are coded as follows for easy recognition of all possible applications of each product:

- CAR Carpet
- RES Resilient
- CER Ceramic
- WD Wood

ADA Mouldings meet the requirements of sections 4.5.2 (change in level) and 4.5.3 (carpet-edge trim compliance) of the Americans with Disabilities Act (ADA).



150 - Tile-Carpet Joiner - 1/8"



152 - Carpet to Resilient Transition - 1/8"



935 - Super 2" T - 1/4"



153 - Cerco Bar - 3/8"

MERCER® VINYL MOULDINGS

Mercer® Mouldings are coded as follows for easy recognition of all possible applications of each product:

- CAR Carpet
- RES Resilient
- CER Ceramic
- WD Wood



633 - Tile Reducer - 1/8"



700 - Imperial Reducer - 5/16"



800 - Imperial Reducer - 1/4"

TRANSITIONAL MOULDINGS help to transition carpet, resilient tiles, resilient sheet vinyl, ceramic, laminate and wood to o".

PART NUMBER	APP	PROFILE	DESCRIPTION	PACKAGING
140 Carpet Reducer - 1/4"	CAR		Reduces 1/4" flooring to 0". 1 1/4" transition.	15-20' secs. Per carton (300 feet)
144 Butt-to Reducer - 3/8"	CAR		Edge reducer for 3/8" material in a 2 pi" width for wheeled traffic.	100' Per carton in 2-50' coils
146 Universal Reducer - 3/8"	CAR RES CER WD		Reduces 3/8" materials to 0". 1 5/8" transition.	10-12' secs. Per carton (120 feet)
147 Overlap Reducer - 3/8"	CAR RES		Reducer overlaps 3/8" Multi-Purpose resilient flooring or carpet.	12' secs. Per carton (120 feet)
160 Universal Reducer	CAR WD CER		Edge reducer for 1/2" materials. 2" transition.	10-12' secs. Per carton (120 feet)
165 Carpet to Resilient Reducer - 1/4"	RES CAR		Reduces 1/4" to 1/8" resilient in a 2 pi" wide span for wheeled traffic.	10-12' secs. Per carton (120 feet)
170 Carpet Transitional Reducer	CAR		9/32" reducer with 2 1/2" transition.	10-12' secs. Per carton (120 feet)
174 Wedge Shape Reducer - 1/8"	CAR		Adjoins 1/8". Reduces to 0" over a 4" run. Can be used as reducer or as subfloor transition in place of trowlable underlayment.	100' Per carton in 100' coil
175 Carpet Ramp	CAR		1/4" reducer with 4" transition. For heavy rolling traffic.	10-12' secs. Per carton (120 feet)
200 Royal Commercial Reducer	CAR		Transition reducer. 5/16" undercut for use with tackless or double-stick installations.	10-12' secs. Per carton (120 feet)
630 Tile Reducer - 1/16"	RES		Butts to reduce gauge of resilient to 0". 1" x 36" x 1/16".	50-3' secs. Also available in 2-100' coils.
632 Tile Reducer - 3/32"	RES		Butts to reduce gauge of resilient to 0". 1" x 36" x 3/32".	50-3' secs. Also available in 2-100' coils.
633 Tile Reducer - 1/8"	RES		Butts to reduce gauge of resilient to 0". 1" x 36" x 1/8".	50-3' secs. Also available in 2-100' coils.
700 Imperial Reducer - 5/16"	CAR		1 11/32" transition reducer. For glue-down carpet; 5/16" undercut. Can be trimmed to butt to tile.	20-12' secs. Per carton (240 feet)
705 Super Imperial Reducer	CAR		1 15/16" heavy duty transition reducer. For glue-down carpet; 5/16" undercut. Can be trimmed to butt to tile.	10-12' secs. Per carton (120 feet)
Underslung Reducer 733 (Self-Stick) 735 (Dry Back)	RES		Binder-Bar edging for 1/16" to 1/8" resilient floors. With self-stick or dry back.	22-3' secs. 66 ft. self-stick and 2-35' coils 70 ft. dry back per carton
800 Imperial Reducer - 1/4"	CAR		1 1/4" transition reducer. For glue-down carpet; 1/4" undercut. Can be trimmed to butt to resilient tile.	20-12' secs. Per carton (240 feet)
900 Imperial Reducer - 3/16"	CAR		1 1/16" transition reducer. For glue-down carpet; 3/16" undercut. Can be trimmed to butt to resilient tile.	20-12' secs. Per carton (240 feet)
901 Superior Imperial Reducer - 3/16"	CAR		2 3/16" transition reducer. For glue-down carpet; 3/16" undercut.	1-50' coils 50 ft. per carton

MAT EDGE MOULDINGS Flexible vinyl for protecting edges of floor mats. Minimums may apply.

420, 425 Mat Edging	CAR		Flexible vinyl for protecting edges of floor mats. 420: 3/16" butt edge. 1 5/8" transition. 425: 3/8" butt edge. 1 5/8" transition.	2-50' coils Per carton (100 feet)
------------------------	-----	--	---	-----------------------------------

Available in all **Uni-Colors**

Custom colors available.
Minimums apply. Please make final selection for all colors from actual product samples. To order samples go to www.burkeflooring.com or call **800.447.8442 ext. 1031**.

EDGE FINISHING MOULDINGS help finish exposed edges of covered sheet vinyl, covered carpet, ceramic tile and wood paneling. Shapes 225, 230 and 400 can also be used as walk-off transitions.

PART NUMBER	APP	PROFILE	DESCRIPTION	PACKAGING
022 Carpet Cove Cap			Semi-rigid capping. For 1/4" and 5/16" covered carpet; one-man installation.	20-12' secs. Per carton (240 feet)
040 Round Cap - 1/8"			Cap for covered sheet goods. 1/8" gauge; round top.	50-12' secs. Per carton (600 feet)
225 Flex Cove Cap			Cap for 3/16" covered/glue-down carpet.	20-12' secs. Per carton (240 feet)
230 Mono Edge			Flexible capping. For 1/4" covered/glue-down carpet or grass; one-man installation.	20-12' secs. Per carton (240 feet)
390 Square Cap - 1/8"			Cap for 1/8" covered sheet vinyl.	50-12' secs. Per carton (600 feet)
400 Custom Edge			Bevel-edge reducer. For 5/16" carpet; deep undercut.	25-12' secs. Per carton (300 feet)
430 Mercap - 9/32"	 		Cap for covered carpet, paneling, and ceramics. 9/32" inside dimension.	50-12' secs. Per carton (600 feet)
450 Square Cap - 1/4"	 		Square cap for covered carpets and wood panels.	40-12' secs. Per carton (480 feet)

Flexible Corner Guards

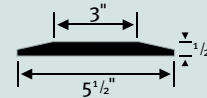


PART NUMBER	PROFILE	DESCRIPTION	PACKAGING
691 Flexible Corner Guard		90° angular shaped profile with 2 1/2" return legs. Legs taper from 7/32" at nose to 3/16" at tip.	6-54" secs. (27 ft) Per carton or 6-108" secs. (27 ft) Per carton*
693 Flexible Corner Guard		90° angular shaped profile with 3/4" return legs. 1/8" leg thickness.	20-54" secs. (90 ft) Per carton* or 20-108" secs. (180 ft) Per carton*
695 Flexible Corner Guard		90° angular shaped profile with 1 1/2" return legs. 1/8" leg thickness.	20-54" secs. (90 ft) Per carton* or 20-108" secs. (180 ft) Per carton*
696 Profiles Corner Guard		Designed to complement Profiles Wall Base.	8' secs. 160' Per carton

* special order

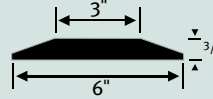
Thresholds

684 FULL SADDLE - 1/2"



5 1/2" wide door threshold adjoins 1/4" Multi-Purpose flooring or Carpet or Ceramic.
36" length - 18' per carton

686 FULL SADDLE - 3/4"

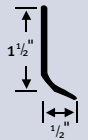


6" wide door threshold adjoins 1/4" Multi-Purpose flooring or Carpet.
36" length - 12' per carton

Tub Mouldings

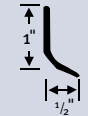
060 TUB MOULDING - SELF-STICK

Mirror-Finish® cove for bathtub, counter, and shelves; 1 1/2" height.
24-5' secs. Per carton (120 feet)
401 White and 403 Almond only



605 TUB MOULDING - SELF-STICK

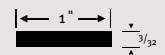
Mirror-Finish® cove for bathtub, counter, and shelves; 1" height.
24-5' secs. Per carton (120 feet)
401 White and 403 Almond only



Misc. Mouldings

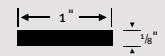
642 FEATURE STRIP - 3/32"

Accent strip for custom inlaid floors; 3/32" gauge. 1" x 36" x 3/32".
50-3' secs. Per carton (150 feet)



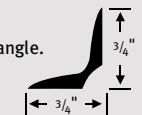
643 FEATURE STRIP - 1/8"

Same specifications as 642 Feature Strip, but 1/8" thick.



655 UTILITY MOULDING - 3/4"

Finish moulding for inside any right angle.
25-5' secs. Per carton (125 feet)
401 White and 403 Almond only



MERCER® MOULDINGS - TECHNICAL DATA

All of our flooring products conform with ADA Accessibility Guideline Requirements that floors be stable, firm, and slip-resistant.

Composition	Thermoplastic Vinyl
Installation	Install with high quality solvent-based contact adhesive for compatibility
Application	All mouldings manufactured for heavy traffic areas
Applicable Standards	Class 1 Fire Rated (ASTM E-648) - ADA, OSHA

ADA

Mouldings meet the requirements of sections 4.5.2 (change in level) and 4.5.3 (carpet-edge trim compliance) of the Americans with Disabilities Act (ADA).



BURKE® ADHESIVES

As an integral part of the Burke Flooring System, Burke adhesives are formulated to meet municipal, state and federal code compliance regulations. They do not contribute to IAQ (Interior Air Quality) problems when applied as instructed. A stair tread nose-filler caulking is available, along with the required gun and mixer tips. Another unique feature - unused caulk can be saved and used later with another clean tip, available from your Burke distributor!

- Non-flammable formulations
- Adhesives must be used for Burke Warranty to apply
- Complete instructions on each unit

Burke Adhesive	Recommended Usage	Spread Rate	Floor Conditions	LEED EQ 4.1 Qualified	VOC Level
BR-101	Any Burke or Mercer Wall Base Laminate, etc.	250 LF by trowel (4") 65 LF per cartridge (4")	Dry, non-porous surface free of paint, wallpaper	Yes	Negligible (0 grams/liter)
BR-710	EcoFitness	75 SF per gallon	Dry, porous surface	Yes	< 45 grams/liter
BR-711	Tile, Treads, Nosings, Risers, Stringer & LVT	100 SF per gallon	Dry, porous surface above-grade; moisture-free wood or concrete	Yes	Negligible (0 grams/liter)
BR-715 two part	Tread Nosings 50 LF per via cartridge	200 SF per gallon	Concrete, wood or non-galvanized metal steps	Yes	< 12 grams/liter
BR-721 two part Solvent-Free	Tile, Treads, LVT	100 SF per gallon	Dry, porous or non-porous surfaces on, at or below grade solid strength & flexible bond for heavy foot & vehicle traffic high water resistance to surface flooding	Yes	< 12 grams/liter
BR-725 two part	Tile, Treads, LVT	100 SF per gallon	Wherever BR-721 is used plus impact resistant	Yes	< 12 grams/liter
Step-Bond Adhesive Tape	Rubber and Vinyl Treads and Risers	6 inch by 164 LIN. feet 1 inch by 164 LIN. feet	Concrete, wood or non-galvanized metal steps	Yes	Negligible (0 grams/liter)

Acceptable moisture vapor transmission rate in concrete: 3 pounds per 1,000 sf in 24 hours via calcium chloride test method (ASTM-1869).

See Installation Instructions for complete information.

All Burke Adhesives listed above can qualify for LEED EQ Credit 4.1: Low-Emitting Materials: Adhesives & Sealants. All of the Burke Flooring Adhesives listed above are in compliance with the requirements of SCAQMD Rule #1168. Specific VOC levels for each adhesive is noted above. Material Safety Data Sheets for all Burke Flooring Adhesive products are available at www.burkeflooring.com.

WE ALSO MANUFACTURE THE FOLLOWING PRODUCTS DESIGNED FOR DEMANDING APPLICATIONS. MINIMUMS APPLY

UV™ ULTRAVIOLET LIGHT RESISTANT TILE reduces the impact of ultra-violet rays on products exposed to direct sunlight.

FR™ FIRE RETARDANT TILE increases the fire retardance of our products to a Class A rating when tested in accordance with ASTM E84 fire test.

OGR™ OIL AND GREASE RESISTANT RUBBER TILE provides an oil and grease resistant surface for use in service bays and other transportation applications.



FROM



AIRPORTS IN KOREA TO ELEVATORS IN KALAMAZOO...

www.burkeflooring.com



WE'RE ALWAYS HERE FOR YOU ONLINE.

Whatever your project, where ever you are, you can always get the information you need, 24/7 at our website.

- Learn more about our products.
- Get comprehensive maintenance and installation information.
- Order samples.
- Find out about how our products meet LEED, FloorScore and other environmental standards.
- Get detailed warranties and architectural specifications.
- Watch video demonstrations.
- Contact Burke representatives.

And so much more!

THE UNI-COLOR[®] SYSTEM



001 Malibu Sand



206 Light Beige



527 Clay



509 Nutmeg



597 Mocha



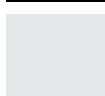
502 Brown



523 BlackBrown



701 Black



663 Sky Gray



208 Light Gray



204 Gray



217 Charcoal



660 Slate



506 Tahoe



323 Bluebonnet



875 Navy



505 True Blue



254 Light Teal



331 Dark Forest

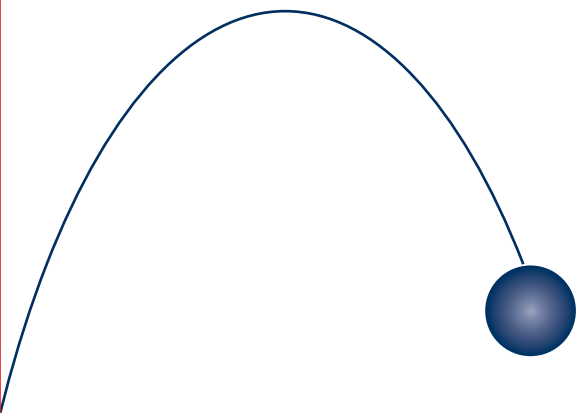


607 Cranberry

A 20-color integrated color coordination system that encompasses the entire Burke Flooring product line.

Please make final selection for all colors from actual product samples. To order samples go to www.burkeflooring.com or call **800.447.8442 ext. 1031.**

WALL BASE | MOULDINGS | ADHESIVES



PERFORMANCE



THAT'S THE BEAUTY OF

Burke

F L O O R I N G

Burke

FLOORING

2250 South Tenth Street
San Jose, CA 95112

Customer Service:
East: 800-447-8442
West: 800-675-8260

www.burkeflooring.com

